

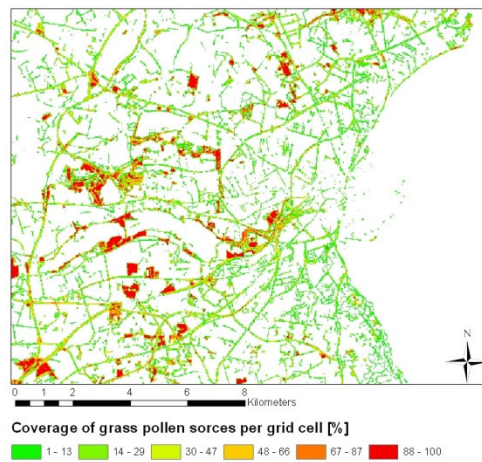
Information about the gridded inventory in the supplementary material that is associated to the article

“Identifying urban sources as cause to elevated grass pollen concentrations using GIS and remote sensing”

By

Carsten Ambelas Skjøth, Pia Viuf Ørby, Thomas Becker, Camilla Geels, Vivi Schlünssen, Torben Sigsgaard,
Jakob Hjort Bønløkke, Janne Sommer, Peter Sjøgaard, and Ole Hertel

Submitted to Biogeosciences September 2012



Fileformat: tiff

Filenames for GIS systems: “Grass.tif”, “Grass.tif.vat.dbf”, “Grass.rrd”, “Grass.aux”

Filename for raw ascii data set: “Grass.txt”

Columns and rows: 1163, 911

Cellsize: 14.4m, 714.4m

Pixel depth: 8 bit

Min value 0

Max Value 100

Spatial reference. WGS_1984_UTM_Zone_32N

Datum: D_WGS_1984

Xllcorner, yllcorner 563686.53037237 6217302.0254579