

Supplementary Material

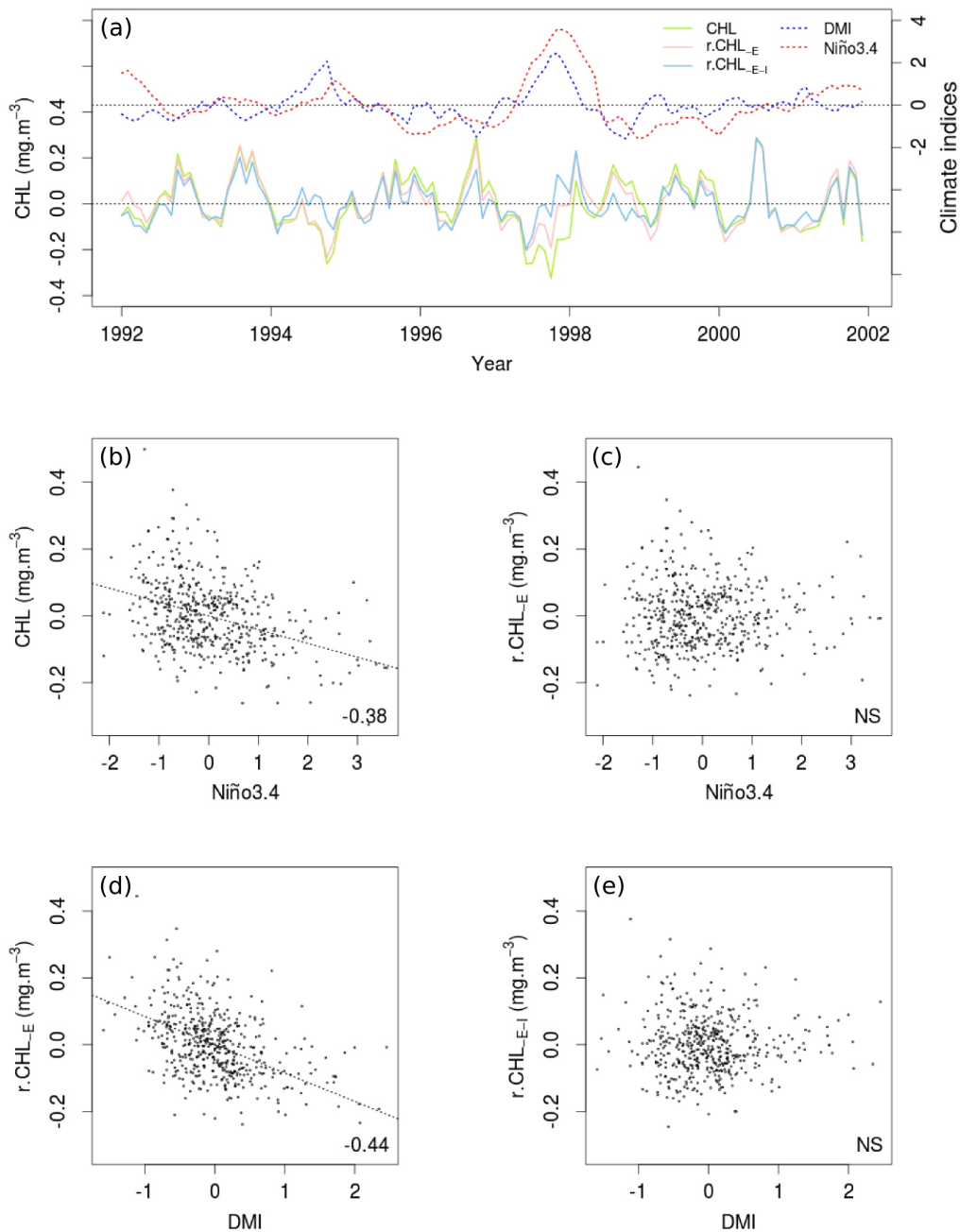


Fig. S1. The partial regression method as applied to surface chlorophyll in the STI region. (a) Time-series showing the climate indices, the chlorophyll anomalies (CHL) and the residuals of CHL remaining after first ENSO and then IOD signals have been removed (i.e. residuals of Eqs. 1 and 3 respectively). (b) CHL anomalies and (c) CHL residuals from Eq. 1, plotted against the Niño3.4 index, illustrating the linear relationship with ENSO and its effective removal. The same residuals still have a strong relationship with DMI in (d), but this signal is accounted for by Eq. 3, leaving residuals without ENSO or IOD signal (e).