

Supporting Information

Analysis of passive-sampler monitored atmospheric ammonia at 74 sites across southern Ontario, Canada

X. H. Yao (xhyao@ouc.edu.cn) and L. Zhang (leiming.zhang@ec.gc.ca)

Figure S1. Inter-comparison of collected NH_3 concentration between two the passive samplers and active samplers (Passive sampler-12 mm represents Ogawa sampler; Passive sampler -25 mm represents custom-designed sampler).

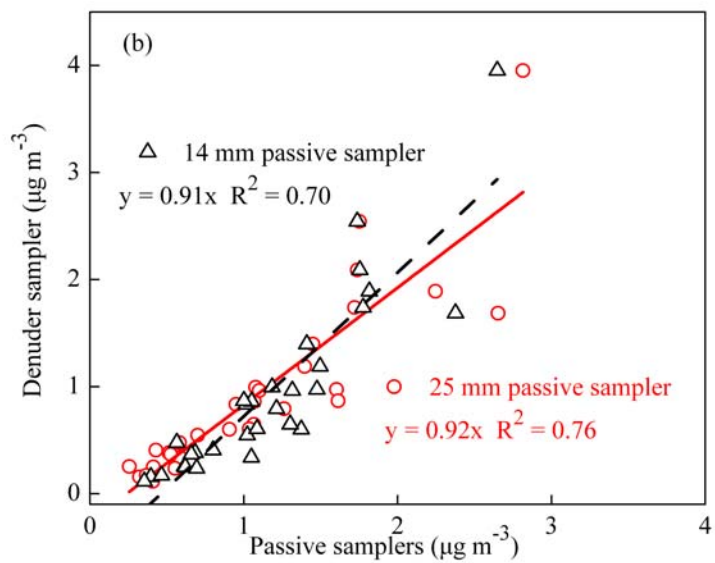
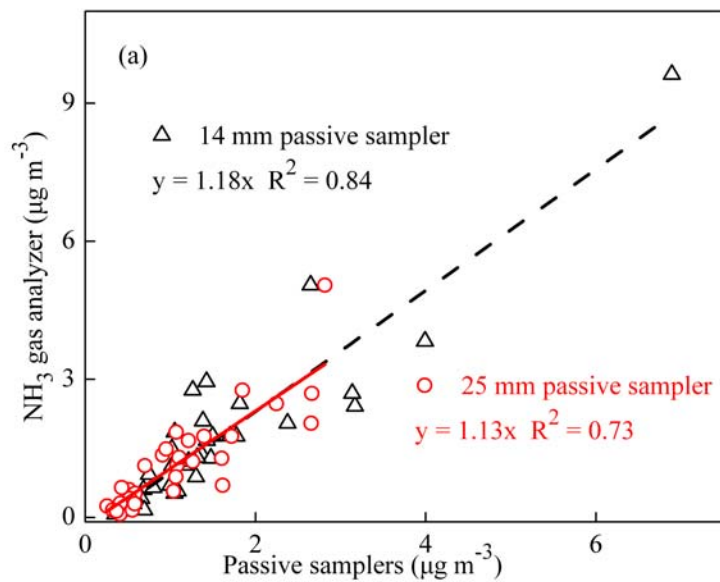


Figure S2. 2011 NAESI NH₃ emission inventory in the unit of ktonnes/year/grid element (15kmx15km).

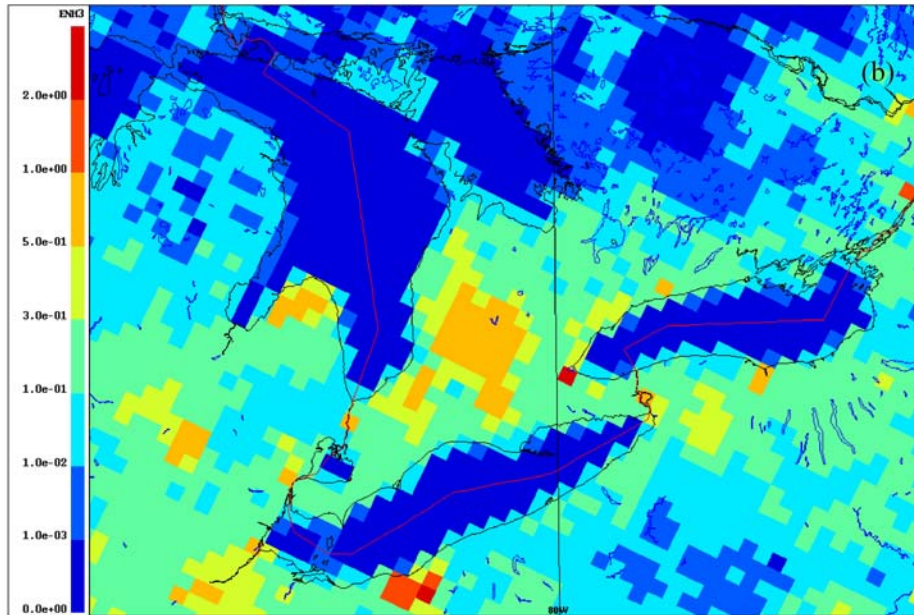


Figure S3: Land use distribution.

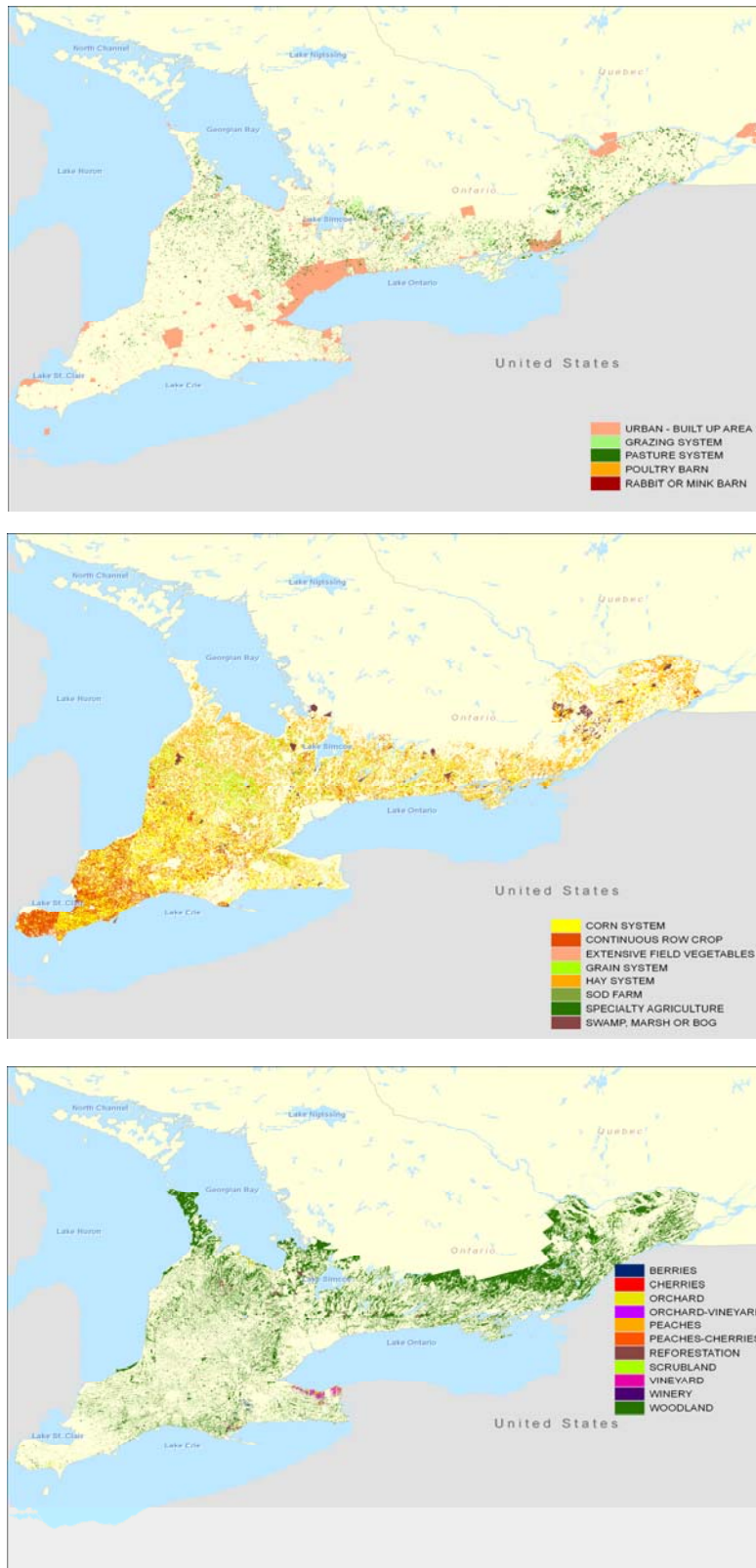


Figure S4. Satellite image data of NO₂ across southern Ontario in 2006 (data was from <http://www.temis.nl/airpollution/no2.html>).

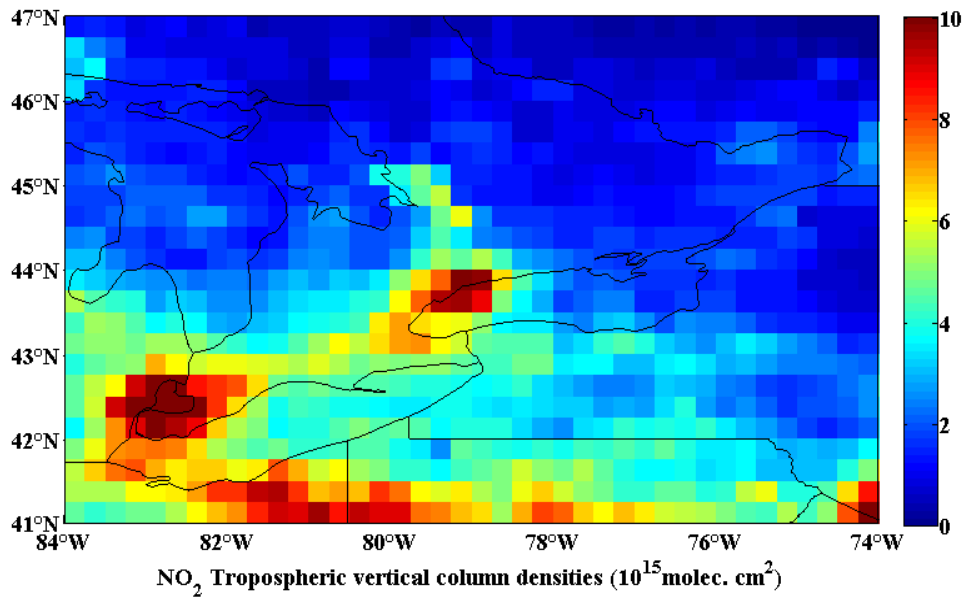


Figure S5. Satellite image data of snow covering across southern Ontario in February 2007 (data was from <http://neo.sci.gsfc.nasa.gov/Search.html?>).

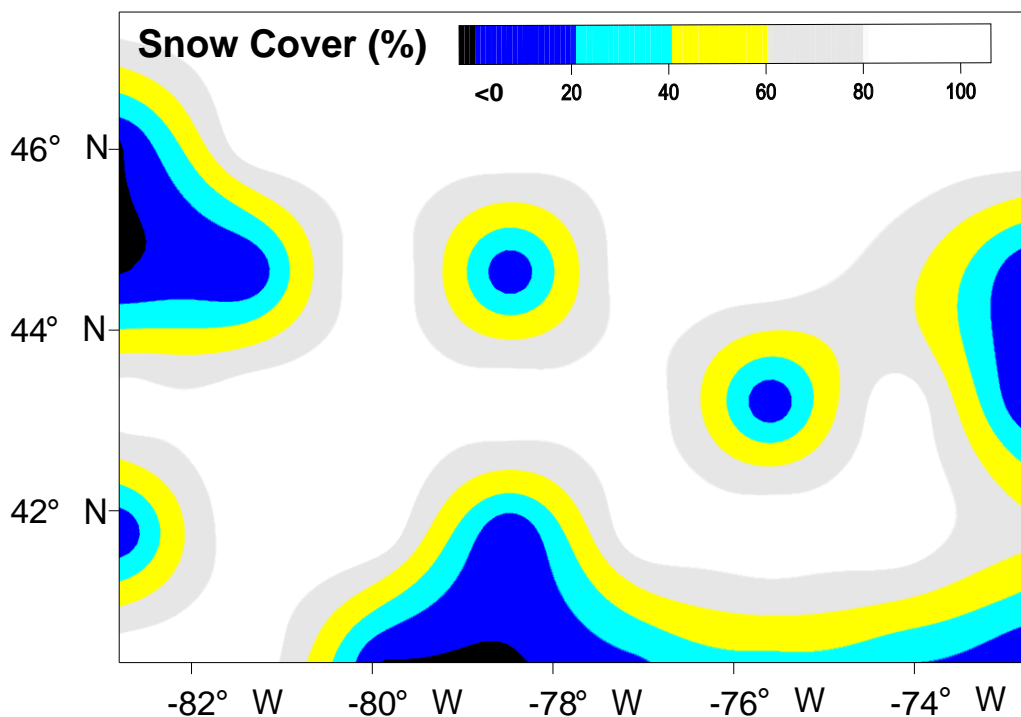


Figure S6: Temporal variation of NH_3 at CLC in 2006-2007.

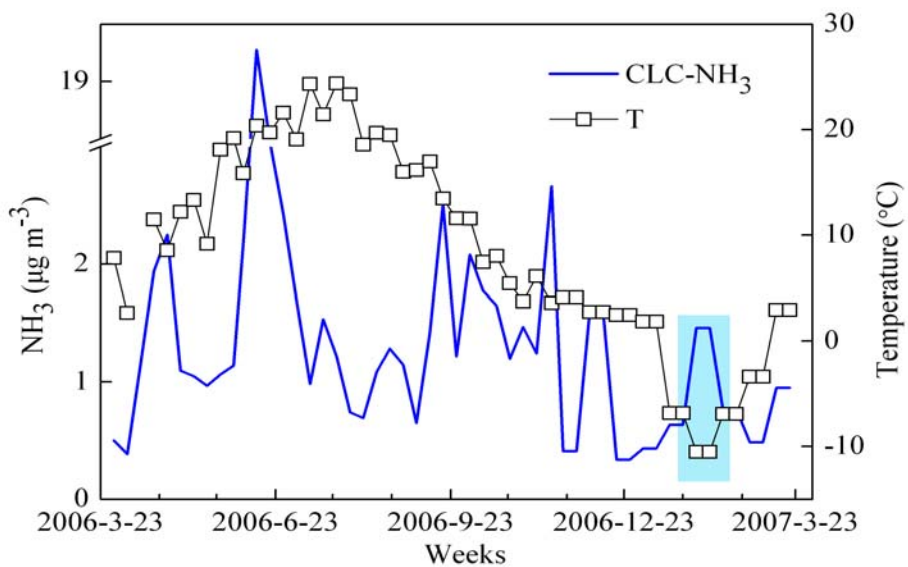


Figure S7. Geographical distribution of the paired sites with negative correlations.

