



Nitrogen mineralization and gaseous nitrogen losses from waterlogged and drained organic soils in a black alder (*Alnus glutinosa* (L.) Gaertn.) forest

T. Eickenscheidt¹, J. Heinichen¹, J. Augustin², A. Freibauer³, and M. Drösler¹

¹University of Applied Sciences Weihenstephan-Triesdorf, Chair of Vegetation Ecology, Weihenstephaner Berg 4, 85354 Freising, Germany

²Leibniz Centre for Agricultural Landscape Research e. V., Institute of Landscape Matter Dynamics, Eberswalder Straße 84, 15374 Müncheberg, Germany

³Thünen Institute of Climate-Smart Agriculture, Bundesallee 50, 38116 Brunswick, Germany

Correspondence to: T. Eickenscheidt (tim.eickenscheidt@hswt.de)

Received: 25 September 2013 – Published in Biogeosciences Discuss.: 5 December 2013

Revised: 5 March 2014 – Accepted: 12 March 2014 – Published: 5 June 2014

Abstract. Black alder (*Alnus glutinosa* (L.) Gaertn.) forests on peat soils have been reported to be hotspots for high nitrous oxide (N₂O) losses. High emissions may be attributed to alternating water tables of peatlands and to the incorporation of high amounts of easily decomposable nitrogen (N) into the ecosystem by symbiotic dinitrogen (N₂)-fixation of alder trees. Our study addressed the question to what extent drainage enhances the emissions of N₂O from black alder forests and how N turnover processes and physical factors influence the production of N₂O and total denitrification. The study was conducted in a drained black alder forest with variable groundwater tables at a southern German fen peatland. Fluxes of N₂O were measured using the closed chamber method at two drained sites (D-1 and D-2) and one undrained site (U). Inorganic N contents and net N mineralization rates (NNM) were determined. Additionally a laboratory incubation experiment was carried out to investigate greenhouse gas and N₂ fluxes at different temperature and soil moisture conditions. Significantly different inorganic N contents and NNM rates were observed, which however did not result in significantly different N₂O fluxes in the field but did in the laboratory experiment. N₂O fluxes measured were low for all sites, with total annual emissions of 0.51 ± 0.07 (U), 0.97 ± 0.13 (D-1) and 0.93 ± 0.08 kg N₂O–N ha⁻¹ yr⁻¹ (D-2). Only 37 % of the spatiotemporal variation in field N₂O fluxes could be explained by peat temperature and groundwater level, demonstrating the complex interlinking of the

controlling factors for N₂O emissions. However, temperature was one of the key variables of N₂O fluxes in the incubation experiment conducted. Increasing soil moisture content was found to enhance total denitrification losses during the incubation experiment, whereas N₂O fluxes remained constant. At the undrained site, permanently high groundwater level was found to prevent net nitrification, resulting in a limitation of available nitrate (NO₃⁻) and negligible gaseous N losses. N₂O flux rates that were up to four times higher were measured in the incubation experiment. They reveal the potential of high N₂O losses under changing soil physical conditions at the drained alder sites. The high net nitrification rates observed and high NO₃⁻ contents bear the risk of considerable NO₃⁻ leaching at the drained sites.

1 Introduction

Black alder (*Alnus glutinosa* (L.) Gaertn.) forests represent the natural vegetation in many semi-wet and wet regions, mostly on soils with high organic carbon contents (Dilly et al., 1999; Schäfer and Joosten, 2005; Kätzel, 2003). Unlike most other wetlands, alder forests on peatland represent non N-limited ecosystems, due to the ability of alder trees for symbiotic N₂-fixation of up to 85 kg N ha⁻¹ yr⁻¹ (Dittert, 1992; Augustin, 2003). To date, there are only a few studies on N turnover and N transformation processes

in black alder forests on peatland. First results indicate that these ecosystems show high N-transfer rates between the atmosphere, the alder trees and the soil (Augustin, 2003). Through the symbiotic N₂-fixation high amounts of easily decomposable N enter the ecosystem and lead to a low C/N ratio of the soil organic matter (Löhmus et al., 2002). Semi-wet peat soils with low C/N ratios are known to be potential hotspots for gaseous and dissolved nitrogen losses via mineralization, nitrification, denitrification and nitrate leaching (Löhmus et al., 2002; Gundersen et al., 1998; Ollinger et al., 2002; Klemetsson et al., 2005). Enhanced N₂O emissions, in particular, are of great interest due to the fact that N₂O acts as a radiative forcing greenhouse gas (IPCC, 2007) and contributes to the chemical destruction of stratospheric ozone (Crutzen, 1979). The few annual observations of N₂O emissions from *Alnus* forest ecosystems on drained or undrained peatlands range between 0.1 and 72.0 kg N ha⁻¹ yr⁻¹ (Augustin et al., 1998; Brumme et al., 1999; Merbach et al., 2001; von Arnold et al., 2005). Most emissions exceed by far the IPCC default emission factor of 0.6 (0.16–2.4) kg N₂O-N ha⁻¹ yr⁻¹ (IPCC, 2006) for boreal and temperate nutrient-rich forest peatlands. The high range requires in-depth process understanding to narrow down the uncertainty and better understand N₂O formation, not least because of the attempt to reduce the climate impact of drained fen peatland by rewetting and afforestation with black alder trees (*Alnus glutinosa* (L.) Gaertn.) (Schäfer and Joosten, 2005; Wichtmann and Joosten, 2007).

The production of N₂O depends mainly on the two microbial processes of denitrification and nitrification (Davidson, 1986). Thus, the availability of soil mineral N and oxygen are the main controlling factors (Del Grosso et al., 2000; Jungkunst et al., 2004). Furthermore, soil temperature is known to be a key variable controlling both processes (Firestone and Davidson, 1989; Smith et al., 1998). Highest N₂O fluxes are mainly related to incomplete denitrification. This requires the presence of efficient electron acceptors (e.g., NO₃⁻) to prevent the reduction of N₂O to N₂ (Bremner and Blackmer, 1981; Speir et al., 1995; Jungkunst et al., 2004). Due mainly to analytical difficulties in the determination of microbially produced N₂, to date the denitrification potential from waterlogged peat soils has rarely been estimated (Watts and Seitzinger, 2000; Mander et al., 2003; Teiter and Mander, 2005; Wray and Bayley, 2007; Roobroeck et al., 2010; Soosaar et al., 2011; Uri et al., 2011). The substitution of ambient N₂ by Helium (He) in laboratory studies possibly represents the most reliable method for the direct and simultaneous determination of N₂O and N₂ exchange rates (Butterbach-Bahl et al., 2002; Roobroeck et al., 2010; Butterbach-Bahl et al., 2013).

The objectives of our study were to quantify (i) the nitrogen mineralization and nitrogen transformation processes, and (ii) N₂O emissions and the factors regulating the N₂O emissions and N₂O/N₂ ratio from waterlogged and drained black alder forest on organic soil.

We hypothesize that (1) in drained black alder forests high N₂O emissions occur due to accelerated N turnover and N mineralization, and (2) N₂O is replaced by N₂ losses during periods of temporarily high water levels. In contrast, NO₃⁻ limitation in permanently waterlogged peat soils results in negligible N₂O and N₂ losses. To investigate our hypotheses, we selected three sites in an alder forest along a groundwater table gradient, representative of the small-scale heterogeneity of the forest stand.

2 Materials and methods

2.1 Study area and experimental design

The study was carried out in a drained 45-year-old black alder (*Alnus glutinosa* (L.) Gaertn.) forest stand (2.2 ha) on organic soil (Freisinger Moos, 48°22' N, 11°40' E; 449 m a.s.l.). According to the climate station in Weihestephan, located 10 km northeast of the site, the 30-year mean annual temperature was 7.5 °C and the mean annual precipitation was 787 mm (1961–1990). At a German Level II monitoring area, located at 5 km distance from the alder forest, annual stand N deposition amounted to 17.67 kg N ha⁻¹ yr⁻¹ with a NH₄⁺-N:NO₃⁻-N ratio of 46:54 in 2011 (data were collected and analyzed by the Bavarian State Institute of Forestry). The black alder stand was planted on grassland in 1965 and has not been managed. In 2009, stem density was approximately 1031 trees per hectare, with a mean height of 19.7 m and a mean diameter at breast height of 21 cm (S. Röhling, personal communication, 2012). Approximately 15 % of the forest area consists of undrained hollows whereas most parts are drained by ditches. In October 2009, we selected three sites which differed in groundwater table (Table 1) as well as in their physical and chemical soil properties relevant for N₂O processes (e.g., bulk density, carbon and nitrogen content) (Table 2). One site was situated in an undrained hollow (named U). The other two sites were situated in the drained part of the forest (named D-1 and D-2) along a gradient of drainage depth. Soils at the drained sites were classified as sapric histosols whereas the undrained site was classified as fluvisol (according to the World Reference Base for Soil Resources (WRB), 2006). The surface organic layer at the drained sites was a L-mull humus, and at the undrained site a submerged mud layer. At the site U, the dominant species in the herb layer were *Phragmites australis* and *Carex acutiformis*. Site D-1 was dominated by *Impatiens glandulifera*, *Impatiens parviflora*, *Deschampsia cespitosa* and *Circaea x intermedia*, whereas site D-2 was dominated by *Carex acutiformis*, *Circaea x intermedia*, *Rubus caesius* and *Carex elongata*.

At each site, three PVC-collars for greenhouse gas (GHG) measurements (inside dimensions 75 × 75 cm) were permanently inserted 10 cm into the soil. The collars of a site were grouped closely to each other (distance of 0.8 to

Table 1. Groundwater level, water-filled pore space (WFPS), extractable nitrate (NO_3^-) and ammonium (NH_4^+) contents of the three sites for the year 2011.

	Soil depth [cm]	U	D-1	D-2	<i>n</i>
Groundwater level [cm]		4 (−26/28) ^a	−41 (−71/−3)	−47 (−77/−5)	
		3 (−20/22) ^b	−42 (−65/−22)	−44 (−68/−25)	81
WFPS [Vol %]	0–10	97 (79/100) a	70 (56/87) b	63 (51/73) c	26
	10–20	99 (92/100) a	81 (65/95) b	78 (66/88) c	26
NO_3^- [mg N kg ^{−1}]	0–10	7 (0/57) a	103 (36/196) b	60 (24/106) c	26
	10–20	4 (0/21) a	109 (55/193) b	62 (28/109) c	26
NH_4^+ [mg N kg ^{−1}]	0–10	73 (0/209) a	18 (0/88) b	10 (0/58) b	26
	10–20	68 (0/169) a	11 (0/57) b	6 (0/24) b	26

Values are given as mean with minimum and maximum in parentheses. Means followed by the same lower-case letters indicate no significant differences between the sites within the year 2011. (Pairwise Wilcoxon rank sum test with Bonferroni correction for WFPS, NO_3^- and NH_4^+ at $P \leq 0.05$). ^a Values give the mean data from the water level loggers (15 min log interval). ^b Values give the mean groundwater level during the gas flux measurements conducted.

Table 2. Soil properties of the sites.

	Soil depth [cm]	U	D-1	D-2	<i>n</i>
Soil type (WRB* 2006)		Fluvisol	Sapric histosol	Sapric histosol	
Soil type (German classification KA5)		DY	KV-KM	KV-KM	
Peat depth [cm]		60	90	90	1
Organic carbon [%]	0–10	35.2 ± 1.4	14.6 ± 0.1	9.7 ± 0.4	3
	10–20	30.2 ± 0.6	13 ± 0.1	8.3 ± 0.2	3
Total nitrogen [%]	0–10	2.8 ± 0.1	1.8 ± 0.1	1.1 ± 0.0	3
	10–20	2.0 ± 0.0	1.5 ± 0.1	0.9 ± 0.0	3
C/N ratio	0–10	12 ± 0.2	8 ± 0.2	9 ± 0.6	3
	10–20	15 ± 0.1	9 ± 0.5	9 ± 0.3	3
Bulk density [g cm ^{−3}]	0–10	0.14 ± 0.01	0.36 ± 0.02	0.47 ± 0.04	6
	10–20	0.13 ± 0.00	0.43 ± 0.01	0.60 ± 0.03	6
Porosity [%]	0–10	89 ± 3	79 ± 2	74 ± 1	6
	10–20	92 ± 1	79 ± 1	75 ± 1	6

Values give means ± standard error. *World Reference Base for Soil Resources.

2.5 m) due to large heterogeneity in soil properties. Boardwalks were installed to prevent oscillations of the peat through movements during the measurements. Plastic perforated tubes (JK-casings DN 50, Ø 60 mm, length 1 m) were installed close to each collar for plot-specific measurements of the groundwater table during gas flux measurements. We equipped one tube per site with a water level logger (Type Mini-Diver, Schlumberger water services), which logged the water table every 15 min. Additionally, climate stations were installed between the sites D-1 and D-2 at the beginning of March 2010 and at site U in April 2011. At each climate station, air temperature and humidity at 20 cm above soil sur-

face, soil temperatures at a depth of −2, −5 and −10 cm as well as soil moisture content at −5 cm were logged every 30 min. In addition to the recorded data, site-specific soil temperatures at three soil depths (−2, −5 and −10 cm) were determined with penetration thermometers at the beginning and end of each gas flux measurement. Moreover, plot-specific groundwater levels were measured inside the tubes without loggers during gas flux measurements.

2.2 Field measurements

2.2.1 N₂O flux measurements

We measured fluxes of N₂O every second week from December 2010 to January 2012 using the static manual chamber method with a chamber height of 0.5 m (Livingston and Hutchinson, 1995). At site U, in periods where the forest floor vegetation grew higher than the chamber height, extensions (same dimension as chamber) were installed between the collar and chamber (white, opaque; volume varied between 309 and 927 L). A detailed description of chamber dimension and configuration is given in Drösler (2005). Four gas samples were taken at four regular time intervals after chamber closure (enclosure time 60 min, in the case of two extensions 120 min). The samples were collected in 20 mL glass vials, each sealed with a butyl rubber septum. The vials were flushed with chamber air for 30 s using a portable micro pump (KNF Neuberger GmbH, NMP015B), so that the air in the vials was exchanged 32 times. In addition, the pump was used to build up an overpressure of approximately 550 mbar to protect the sample against fluctuations in atmospheric pressure during storage. Gas analyses were carried out with a gas chromatograph (Perkin and Elmer, Clarus 400 GC or Clarus 480 GC) equipped with a headspace auto sampler (Perkin and Elmer, TurboMatrix 110), a Porapak 80/100 mesh column and an electron capture detector (ECD) for N₂O (ECD temperature 380 °C). Gas flux rates were calculated from the linear change in gas concentration over time considering chamber air temperature and atmospheric pressure. Gas fluxes were accepted when the linear regression was significant ($P \leq 0.05$). In the case of small N₂O fluxes, fluxes were also accepted if the coefficient of determination was ≥ 0.90 and the regression slope was between -1 and 1 ppb min^{-1} . The cumulative annual mean exchange rate was calculated by linear interpolation between the measurement dates.

2.2.2 Soil sampling and laboratory analysis

Total carbon (C_{tot}), organic carbon (C_{org}) and total nitrogen (N_{tot}) were analyzed by the AGROLAB Labor GmbH (Bruckberg, Germany) on three mixed soil samples per site. Each sample was composed of nine individual samples collected close to each collar at two soil depths (0–10, 10–20 cm). After drying for 72 h at 40 °C, soil samples were sieved to 2 mm to remove stones and living roots.

For the determination of bulk density and porosity, three undisturbed core cutter samples (100 cm^3) were randomly taken at four depths (0–5, 5–10, 10–15, 15–20 cm) for each site.

During every gas flux measurement, one mixed soil sample consisting of nine individual samples was collected at two soil depths (0–10, 10–20 cm) for each site for the determination of mineral N ($N_{\text{min}} = \text{NH}_4^+ - \text{N} + \text{NO}_3^- - \text{N}$) contents.

Samples were immediately cooled in an ice box until further processing. Mineral N was extracted after shaking 40 g of fresh soil with 160 mL CaCl₂ (0.0125 M) for one hour. The extracts were filtered through a 4–7 µm filter paper (Whatman 595 1/2) and the first 20 mL of the extract were discarded (VDLUFA, 1997). The solution was frozen at -20 °C until analysis, which was conducted by the AGROLAB Labor GmbH (Bruckberg, Germany). A subsample of 20–30 g was used to determine the gravimetric water content, which was taken into account for the calculation of mineral N concentrations.

2.2.3 Net N mineralization

In 2011, net ammonification, nitrification and N mineralization rates (NNM) were determined in situ in four different periods in time (March, June, September and December). At each study site and period, three pairs of intact soil cores were taken randomly from the upper 20 cm of the soil layer using a cylindrical auger (diameter of 45 mm). In the case of flooding at the undrained site, disturbed soil samples were used. One core of each pair was sealed in low density polyethylene (LDPE) bags (19 µm) and returned into the soil for incubation (t_1), which lasted 21 days (20 days in December) (e.g., Adams et al., 1989). The other soil cores were used as initial samples (t_0). Mineral N contents were determined as described above after soil cores were divided into 0–10 and 10–20 cm sections. Net ammonification, net nitrification and net N mineralization were calculated according to the method described by Uri et al. (2003)

2.3 Laboratory incubation experiment

To examine the magnitude of potential total denitrification losses from the undrained and drained alder forest, a laboratory incubation experiment was performed; the experimental conditions were supposed to reproduce field conditions as closely as possible in respect to their temperature range and mean WFPS.

2.3.1 Soil core sampling and WFPS adjustment

In June 2011, eight intact soil cores with a diameter of 7.3 cm and a height of 6 cm were collected from a soil depth of 9–15 cm close to each collar of site D-2 for incubation in the laboratory (in total, 24 soil cores per site). Four samples per collar were immediately weighed and stored at 4 °C. The remaining four intact soil cores per collar were used to estimate the actual water-filled pore space (WFPS). This information was used to adjust the WFPS to 70 % and 100 % in the cores stored for laboratory incubation (six cores for 70 % and six cores for 100 % per site).

For the soil core sampling at site U, it had to be considered that the drying of the soil cores in order to adjust a WFPS of 70 % would lead to distinct shrinking of the waterlogged organic soil in the cores. To avoid this, three cubic blocks

(dimensions 40 × 25 cm, height 20 cm) were collected with plastic containers from which the bottom plate was removed beforehand. For transport, storage and drying to 70 % WFPS, the containers were placed on perforated metal plates. Six intact soil cores for site U were collected from these soil blocks after they reached the required WFPS level. Additionally, six soil cores per collar were directly collected in the field and treated in the same way as the samples from site D-2 (four samples for determining actual WFPS and two samples for incubation at 100 % WFPS level per collar). All soil cores were stored at 4 °C until they were placed in the incubation vessels.

After incubation the WFPS of the soil cores was determined to test the accuracy of the adjusted WFPS. The samples from site U and D-2 had exactly 100 % WFPS as well as 70 % WFPS at D-2 (on average 70.4 ± 2.2 % WFPS). For site U, however, WFPS had been adjusted to 83.0 ± 0.5 % instead of 70 %. We suspect that, due to the shrinking of the soil sample blocks, the bulk density must have changed; therefore the calculation of the required water content was not as accurate as needed to adjust a WFPS of 70 %.

2.3.2 Determination of gas fluxes

For measurements of N₂, N₂O, CO₂ and CH₄ fluxes, we applied the helium–oxygen (He–O) method (Butterbach-Bahl et al., 2002; Mander et al., 2003; Roobroeck et al., 2010; Uri et al., 2011) using four different incubation temperatures (0, 5, 15 and 25 °C). Five replications per site and moisture content were simultaneously placed in special gas-tight incubation vessels inside a climate chamber. The sixth one served as a reserve. Analyses were conducted in the laboratory of the Institute of Landscape Matter Dynamics, Leibniz Centre for Agricultural Landscape Research (ZALF), Müncheberg, Germany. Four substitution sequences with moderate evacuation (0.047 bar), followed by flushing the vessels with an artificial He/O₂ gas mixture (20.58 % O₂, 347.8 ppm CO₂, 1.780 ppm CH₄, 0.290 ppm N₂O, 3.04 ppm N₂, rest He), were conducted to remove ambient N₂. Subsequently, the air temperature of the climate chamber was set to 0 °C and a continuous He/O₂ gas flow rate of 15 mL per minute was adjusted to the vessel headspaces, followed by a 24 h period to establish a new flow equilibrium. From each vessel, we measured the N₂O, CO₂ and CH₄ headspace concentration once and the N₂ concentration three times. After gas flux measurements were done, we immediately increased the incubation temperature to the next level for 20 h and continued the measurements. Soil core samples lost approximately 5.0 ± 0.9 % and 2.7 ± 0.3 % of their initial water content at 100 % and 70/83 % WFPS during the incubation procedure of five days. Concentration of N₂ were analyzed by a micro-GC (Agilent Technologies, 3000 Micro GC), equipped with a thermal conductivity detector (TCD). Gas chromatograph settings were as follows: TCD temperature 60 °C, sample inlet 60 °C, molsieve capillary column (14 m), oven tempera-

ture 60 °C, carrier gas He 6.0 (1 mL min⁻¹). Concentrations of trace gases were analyzed by a GC (Shimadzu, Duisburg, Germany, GC-14B) equipped with a flame ionization detector (FID) for CH₄ and an ECD for N₂O and CO₂. GC settings were as follows: FID temperature 310 °C, ECD temperature 310 °C, column Porapak 80/100 mesh, oven temperature 60 °C, carrier gas N₂ 6.0 (13 mL min⁻¹). Background N₂ concentrations varied between 3.5 and 4.5 ppm (ca. 3 ppm originated from the artificial He/O₂ gas mixture and 1 ppm from diffusion into the incubation measuring device). Flux rates were calculated from the actual gas concentration of the continuous flow rate from the vessels' headspaces after subtraction of a blank value from a vessel without a soil core, which is equivalent to concentrations from the artificial He/O₂ gas mixture. The lowest detectable flux rates were 200 µg CO₂-C m⁻² h⁻¹, 0.2 µg CH₄-C m⁻² h⁻¹, 0.5 µg N₂O-N m⁻² h⁻¹, and 0.04 mg N₂-N m⁻² h⁻¹.

In order to obtain the temperature effect on gas flux rates, Q_{10} values were calculated from the following equation:

$$Q_{10} = \left(\frac{R_2}{R_1} \right)^{\left(\frac{10}{T_2 - T_1} \right)}, \quad (1)$$

where Q_{10} is the temperature quotient; R_1 and R_2 are gas flux (CO₂, CH₄, N₂O, N₂) rates (mg C or N m⁻² h⁻¹; µg C or N m⁻² h⁻¹); and T_1 and T_2 are temperature (°C).

2.3.3 Estimation of available N_{min} and NO₃⁻ consumption

According to Schaufler et al. (2010) laboratory incubation experiments are limited by the fact that sample storage and incubation procedure decrease the substrate (e.g., NO₃⁻) supply and thereby falsify the results. The amount of N_{min} in the solution from soil cores was not ascertained in the present study. However, a rough estimation of available NH₄⁺ and NO₃⁻ was performed on the basis of t₀ samples from the net N mineralization experiment conducted, which started three days before soil core samples were taken (Table 3). In the present study, significant amounts of gaseous N losses are only expected in the case of complete denitrification with N₂ as the end product. Thus only samples incubated at 100 % WFPS were potentially affected by NO₃⁻ limitation. According to our estimation, samples from site U at 100 % WFPS were presumably permanently NO₃⁻ limited at each temperature level during the incubation procedure, which reflects the natural site conditions. However, for samples from site D-2 at 100 % WFPS no NO₃⁻ limitation was expected. For soil core samples with 70/83 % WFPS, it has to be kept in mind that not only N consumption but also nitrification takes place. However, we can not totally rule out that reduced NO₃⁻ availability lowered the gaseous N fluxes at a later stage of incubation for samples from site D-2 at 100 % and 70 % as well as for site U at 83 % WFPS.

Table 3. Estimation of available N_{\min} and NO_3^- consumption during sample storage and incubation time at 100 % WFPS.

	Time [h]	Site U	Site D-2
Mean bulk density from soil samples 9–16 cm soil depth [$g\ cm^{-3}$]		0.13	0.56
Estimated NO_3^- content [$mg\ N\ kg^{-1}$] ^a		5.90	68.33
Estimated NH_4^+ content [$mg\ N\ kg^{-1}$]		23.30	0.00
Soil mass 250 cm^3 soil core [kg]		0.03	0.14
Estimated amount of NO_3^- per soil core [mg N]		0.19	9.57
Estimated amount of NH_4^+ per soil core [mg N]		0.76	0.00
Surface soil core [m^2]		0.00407	0.00407
Estimated mean N_2 flux during storage at 4 °C [$mg\ N\ m^{-2}\ h^{-1}$]		1.40	0.82
Mean N_2 flux at 0 °C [$mg\ N\ m^{-2}\ h^{-1}$]		1.55	1.03
Mean N_2 flux at 5 °C [$mg\ N\ m^{-2}\ h^{-1}$]		1.24	0.60
Mean N_2 flux at 15 °C [$mg\ N\ m^{-2}\ h^{-1}$]		1.36	1.37
Mean N_2 flux 25 °C [$mg\ N\ m^{-2}\ h^{-1}$]		1.27	6.02
Estimated mean N_2 exchange from soil cores at 4 °C [mg N]	264/432 ^b	2.4527	0.8757
Mean N_2 exchange from soil cores at 0 °C [mg N]	24	0.1514	0.1006
Mean N_2 exchange from soil cores at 5 °C [mg N]	20	0.1009	0.0488
Mean N_2 exchange from soil cores at 15 °C [mg N]	20	0.1107	0.1115
Mean N_2 exchange from soil cores at 25 °C [mg N]	20	0.1034	0.4900
Sum N_2 exchange during sample preparation and incubation [mg N]		2.92	1.63
Proportion from estimated available NO_3^- [%]		> 100	17

^aValues give start concentrations from the net N mineralization experiment, which started on the 7 June 2011. Soil core samples for incubation were taken on the 10 June 2011. ^bSamples from site D-2 (100 % WFPS) were stored for 264 h before the incubation experiment started. Samples from site U (100 % WFPS) were stored 432 h before the incubation started.

2.4 Statistical analysis

Statistical analyses were conducted using R 2.12.1 (R Development Core Team, 2013). The assumption of normality of residuals was tested using the Lilliefors or Shapiro–Wilk test and by plotting the quantile–quantile plots. Homogeneity of variances of residuals was checked with the Levene or Breusch–Pagan test and by plotting the residuals against the fitted values. If necessary, data were transformed (Box–Cox) prior to analyses. We used analysis of variance (ANOVA) (for NNM rates) or the nonparametric Kruskal–Wallis rank sum test (for WFPS, NO_3^- , NH_4^+) to compare means of samples. In case of significant differences between the means, we used Tukey’s honest significant differences (TukeyHSD) or the nonparametric pairwise Wilcoxon rank sum test with Bonferroni correction for multiple comparisons. For testing two independent sample means (for WFPS, NO_3^- , NH_4^+), we used the nonparametric Mann–Whitney U test.

Due to temporal pseudoreplication of time series data (N_2O field measurements) and repeated measurements of vessels in the incubation experiment, we applied linear mixed effect models (Crawley 2007; Eickenscheidt et al., 2011; Hahn–Schöfl et al., 2011). For N_2O field measurements we set up a basic model with site type as a fixed effect and the spatial replication (individual plot) nested in time as a random effect. For the incubation experiment (N_2O , N_2 , CO_2 , CH_4), the fixed structure included the temperature, the site type and the soil water-filled pore space as well as all possible

interaction terms. Non significant terms were removed from the fixed structure. The individual vessel was set as a random effect. We extended the respective basic model by a variance function when heteroscedasticity was observed. In case of significant serial correlation in data, a first-order temporal autoregressive function was included in the model. Autocorrelation was tested with the Durbin–Watson test and by plotting the empirical (partial) autocorrelation structure (Eickenscheidt et al., 2011). The model extension was proven by the Akaike information criterion (AIC). For multiple comparisons, we conducted Tukey contrasts using the general linear hypothesis function from the “multcomp” package (Hothorn et al., 2013). We used nonlinear regressions to explain field N_2O fluxes and NNM rates. The model structure for mean N_2O fluxes included a linear term for the soil temperature in –2 cm soil depth and a cubic term for the mean groundwater (GW) level. Serial autocorrelation were not taken into account in the regression model. The nonlinear model for NNM rates was optimized by using the program Table Curve 3-D (version 4.0) (nonlinear equation is shown in Fig. 4). We accepted significant differences if $P \leq 0.05$. Results in the text are given as means ± 1 standard error.

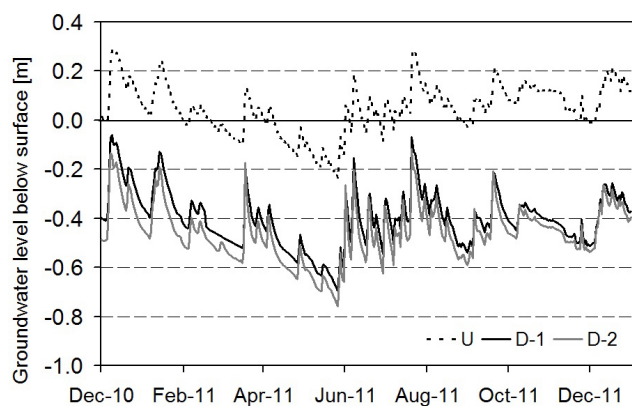


Figure 1. Annual variation in the groundwater level (U=undrained; D-1=drained site 1; D-2=drained site 2). Please note that the x axis starts on 1 December 2010.

3 Results

3.1 Site characteristics

In 2011, the forest air temperature in 20 cm height ranged from -12.3 to 27.8 °C with an annual mean of 9.1 °C. Soil temperature in -2 cm soil depth averaged 9.6 °C at the drained sites and was slightly lower with 9.2 °C at the undrained site. The topsoil at the undrained site U consisted of a mud sediment while the topsoil at the drained sites D-1 and D-2 consisted of highly degraded fen peat. Total organic carbon and the total nitrogen concentrations in the 0–10 cm and 10–20 cm soil layers were two to three times higher at site U than at sites D-1 and D-2 (Tables 1 and 2). Due to much higher bulk density, however, the total N stock in the upper 20 cm of the soil was more than 50 % higher at D-1 and D-2 than at U. The C/N ratios of all sites were narrow (between 11 and 16), indicating nitrogen-rich conditions. No relation between soil properties and N fluxes was determined so that the results and discussion focus on groundwater table and climate variables.

The three sites showed similar dynamics in their annual hydrographs but on different levels (Fig. 1). The mean annual groundwater level was $+4$ cm at U, -40 cm at D-1, and -47 cm at D-2. At site U, WFPS remained permanently close to 100 %. At the drained sites, WFPS was close to 70 % (D-1) and 63 % (D-2) in the 0–10 cm layer and around 80 % in the 10–20 cm layer with some temporal variation (Table 1).

3.2 Nitrogen availability and net N mineralization

In 2011, extractable NO_3^- contents in both soil depths investigated differed significantly among the three sites (all $P < 0.03$) (Table 1). At the undrained site, nitrate was not detectable most of the time, whereas the drained sites showed high NO_3^- contents (Fig. 2a), in particular for the soil depth

of 10–20 cm. However, differences between the two soil depths were not significant.

In contrast to NO_3^- , significantly higher NH_4^+ contents were measured at the undrained site than at the drained sites (Table 1). NH_4^+ contents did not significantly vary between soil depths.

In line with the high contents of extractable inorganic N compounds, NNM rates were also high at the drained sites (Fig. 3a and b). For both soil depths, the drained sites had significantly (all $P < 0.005$) higher NNM rates than the undrained site, whereas differences between the drained sites were not significant. The NNM rates decreased with soil depth, but differences were not statistically significant. The mean NNM rates of the four time periods investigated and the upper 20 cm of the soil were 23 ± 7 $\text{mg N m}^{-2} \text{d}^{-1}$ (U), 179 ± 35 $\text{mg N m}^{-2} \text{d}^{-1}$ (D-1) and 142 ± 32 $\text{mg N m}^{-2} \text{d}^{-1}$ (D-2). Assuming that the time periods are representative of the annual dynamics, mean annual NNM rates are estimated to be 84 ± 26 $\text{kg N ha}^{-1} \text{yr}^{-1}$ (U), 653 ± 128 $\text{kg N ha}^{-1} \text{yr}^{-1}$ (D-1) and 518 ± 117 $\text{kg N ha}^{-1} \text{yr}^{-1}$ (D-2). The NNM rates of the upper 10 cm displayed a clear seasonality with high rates during the summer months and low rates during the winter months. However, only in June a significantly (all $P < 0.001$) higher NNM rate was observed compared to December and March. At the drained sites, net nitrification amounted to nearly 100 % of the NNM, whereas ammonification was the dominating process at the undrained site. Negative net nitrification rates (NO_3^- consumption) were detected at the undrained site in June and September in 0–10 cm soil depth. The NNM in the upper 10 cm of the soil depended on the WFPS and the mean temperature in -5 cm soil depth (Fig. 4).

3.3 Field N_2O fluxes

Annual N_2O emissions were unexpectedly low at all three sites (Fig. 5) with 0.51 ± 0.07 $\text{kg N ha}^{-1} \text{yr}^{-1}$ (U), 0.97 ± 0.13 $\text{kg N ha}^{-1} \text{yr}^{-1}$ (D-1) and 0.93 ± 0.08 $\text{kg N ha}^{-1} \text{yr}^{-1}$ (D-2). The differences in N_2O fluxes between the sites were not statistically significant. At the drained sites the highest N_2O emissions were observed during the late summer and autumn, whereas at the undrained site highest emissions occurred during the dry period in May (Figs. 1 and 5). The temperature at -2 cm soil depth and the mean groundwater level represented the best explanation for mean N_2O fluxes; nevertheless only 37 % of the spatiotemporal variation could be explained ($P < 0.001$) (Fig. 6). Site-specific regression analyses explained 55 % of temporal N_2O variation at D-1 ($P < 0.001$), 32 % at D-2 ($P < 0.01$) and 20 % at U ($P < 0.04$).

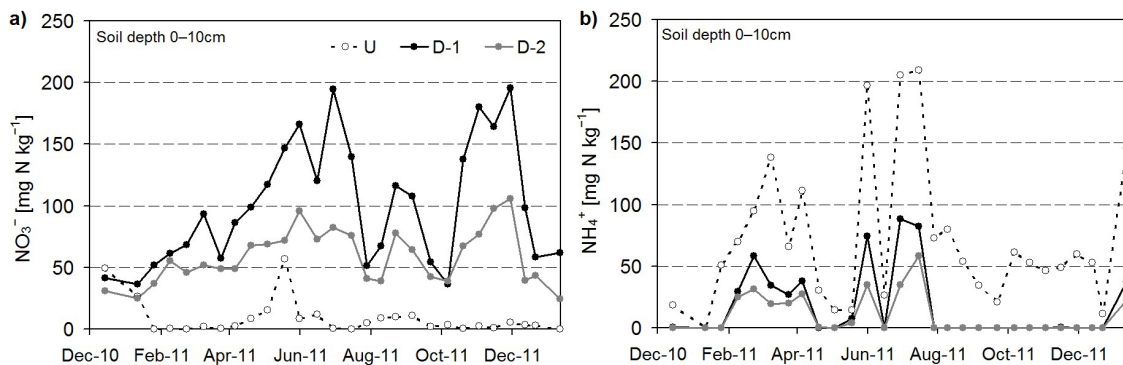


Figure 2. Annual variation in the extractable NO_3^- (a) and NH_4^+ (b) contents for the soil depth of 0–10 cm (U = undrained; D-1 = drained site 1; D-2 = drained site 2). Please note that the x axis starts on 1 December 2010.

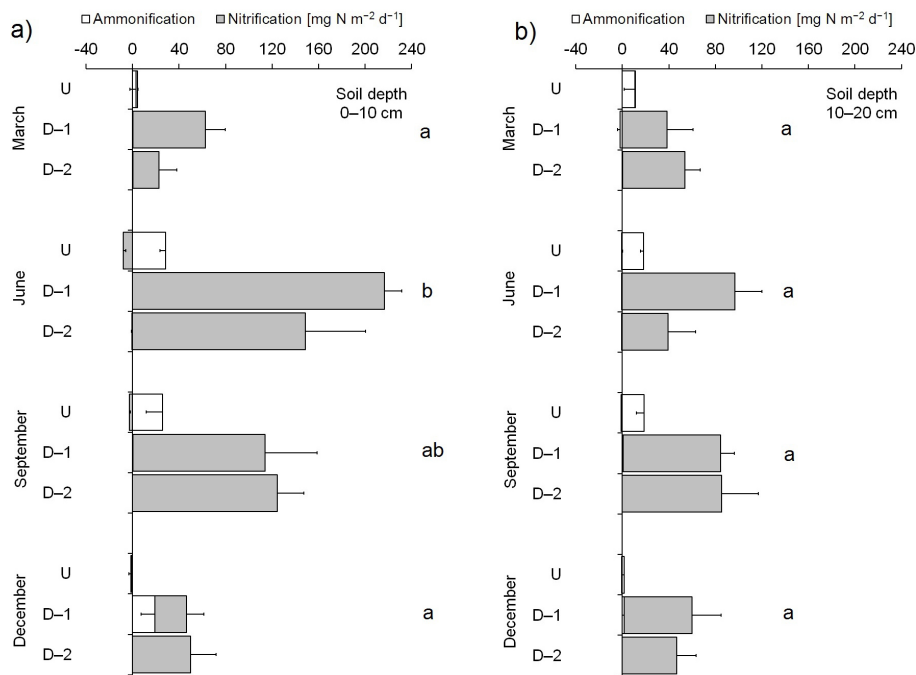


Figure 3. Net ammonification, net nitrification and net N mineralization rates (sum of net ammonification and net nitrification rate) for the soil depth of 0–10 cm (a) and 10–20 cm (b). Means (\pm SE; $n = 3$) followed by the same letter indicates no significant differences in the net N mineralization rate between the months within one soil depth (two-way ANOVA, TukeyHSD test at $P \leq 0.05$). Differences between both soil depths are not significant.

3.4 Effect of temperature and soil moisture on greenhouse and dinitrogen gas exchange under laboratory conditions

3.4.1 CO_2 exchange

CO_2 exchange indicates heterotrophic soil respiration in the incubation. No significant effect of soil moisture and site type on CO_2 exchange was detected (Fig. 7a), indicating comparable soil microbial activity in all incubated treatments. A statistically significant ($P < 0.0001$) quadratic effect of tem-

perature on CO_2 emissions was observed in all treatments with Q_{10} values between 1.82 and 17.80 $\text{mg C m}^{-2} \text{h}^{-1} 10^\circ\text{C}^{-1}$.

3.4.2 CH_4 exchange

No significant CH_4 emissions were observed in any treatment (Fig. 7b). Incubations at 100% WFPS showed consistent near zero CH_4 fluxes or slight CH_4 uptake without significant effects of site type and temperature. At 70/83% WFPS the uptake of CH_4 was significantly ($P < 0.0001$) higher at all temperature levels and for both sites compared

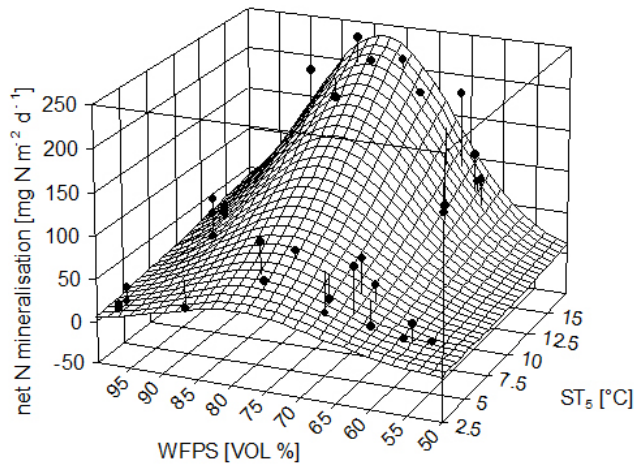


Figure 4. Relationship of net N mineralization in 0–10 cm soil depth (y) to mean water-filled pore space (x_1) and mean soil temperature in 5 cm soil depth (x_2) over 21 days of in situ incubation. Equation formula is $y = 304.28 (\pm 85.27) \cdot \exp(-0.5 \cdot (((WFPS - 25.72 (\pm 4.46)) / 11.47 (\pm 1.14))^2)) + (((ST_5 - 78.60 (\pm 1.15)) / 11.47 (\pm 1.14))^2))$. ($n = 36$; $\text{adj-}R^2 = 0.75$; $P < 0.0001$).

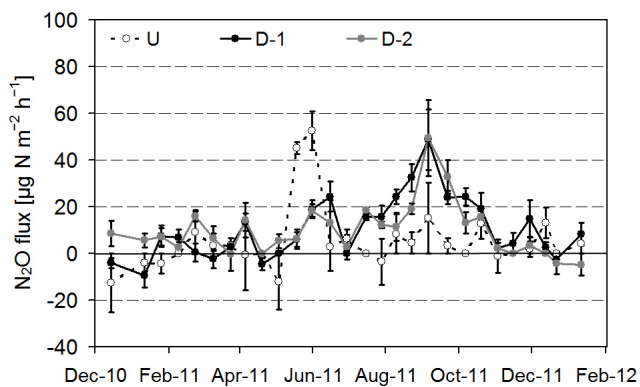


Figure 5. Mean (\pm SE, $n = 3$) N_2O fluxes of the undrained (U), drained 1 (D-1) and drained 2 (D-2) sites. Please note that the x axis starts on 1 December 2010.

to 100 % WFPS. CH_4 uptake increased significantly with temperature only in incubated samples of the drained site ($P < 0.001$).

3.4.3 N_2O exchange

N_2O exchange differed in response to site type, WFPS and temperature. Significantly ($P < 0.0001$) higher N_2O fluxes at both WFPS levels were measured from samples of the drained site (D-2) compared to samples from the undrained site (U) (Fig. 7c). At the drained site, Q_{10} of N_2O emissions was $2.17 \mu\text{g N m}^{-2} \text{h}^{-1} 10^\circ\text{C}^{-1}$ at 70 % WFPS for the temperature range of 0 to 25°C and $2.12 \mu\text{g N m}^{-2} \text{h}^{-1} 10^\circ\text{C}^{-1}$ at 100 % WFPS for 0 to 15°C .

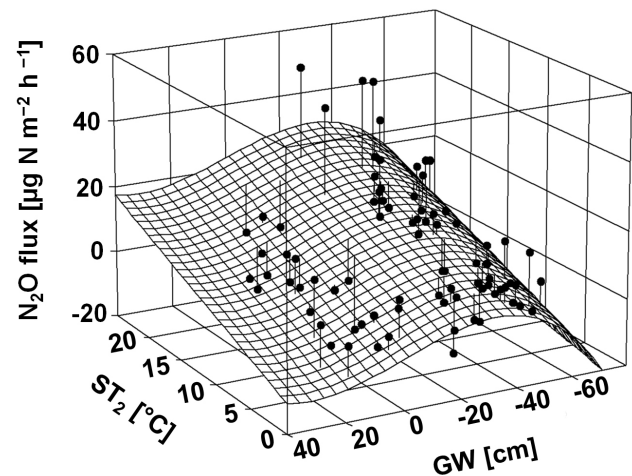


Figure 6. Relationship of mean N_2O flux (y) to mean soil temperature in 2 cm soil depth (x_1) and to mean groundwater level (x_2). Equation formula is $y = -4.884 (\pm 2.409) + 1.128 (\pm 0.179) \cdot ST_2 + (-0.322) (\pm 0.086) \cdot GW + 0.0004 (\pm 0.000) \cdot GW^3$ ($n = 80$; $\text{adj-}R^2 = 0.37$; $P < 0.001$).

For both WFPS levels, samples of the undrained site (U) only showed a weak, but significant (all $P < 0.03$) temperature response for the temperature range of 0 to 15°C . The Q_{10} values of N_2O emissions for the undrained site are $2.07 \mu\text{g N m}^{-2} \text{h}^{-1} 10^\circ\text{C}^{-1}$ at 100 % WFPS for 0 to 15°C and $1.51 \mu\text{g N m}^{-2} \text{h}^{-1} 10^\circ\text{C}^{-1}$ at 83 % WFPS for 0 to 25°C .

For both sites a decline in nitrous oxide emissions at 25°C and 100 % WFPS was observed. However, this pattern was also detected at 83 % WFPS for the undrained site. N_2O emissions observed at the undrained site U were on the same order of magnitude as the field measurements, whereas the drained site D-2 samples showed up to four times higher N_2O fluxes during the laboratory incubation than in the field at 70 % WFPS.

3.4.4 N_2 exchange

N_2 emissions were near zero at 70/83 % WFPS at low temperatures and never exceeded $0.4 \text{ mg N m}^{-2} \text{h}^{-1}$ at high temperatures (Fig. 7d). N_2 emissions at 100 % WFPS were consistently at least 10 times higher than at 70/83 % WFPS ($P < 0.0001$). N_2 exchange also reacted to site type at 25°C and to temperature. At the drained site, Q_{10} of N_2 emissions was $2.03 \mu\text{g N m}^{-2} \text{h}^{-1} 10^\circ\text{C}^{-1}$ at 70 % WFPS for the temperature range of 0 to 25°C and $1.48 \mu\text{g N m}^{-2} \text{h}^{-1} 10^\circ\text{C}^{-1}$ at 100 % WFPS for the temperature range of 5 to 25°C . At the undrained site, Q_{10} of N_2 emissions was $2.13 \mu\text{g N m}^{-2} \text{h}^{-1} 10^\circ\text{C}^{-1}$ at 83 % WFPS for the temperature range of 0 to 25°C . N_2 emissions of the undrained site did not respond to temperature at 100 % WFPS. N_2 emissions increased most strongly from 15 to 25°C in samples of

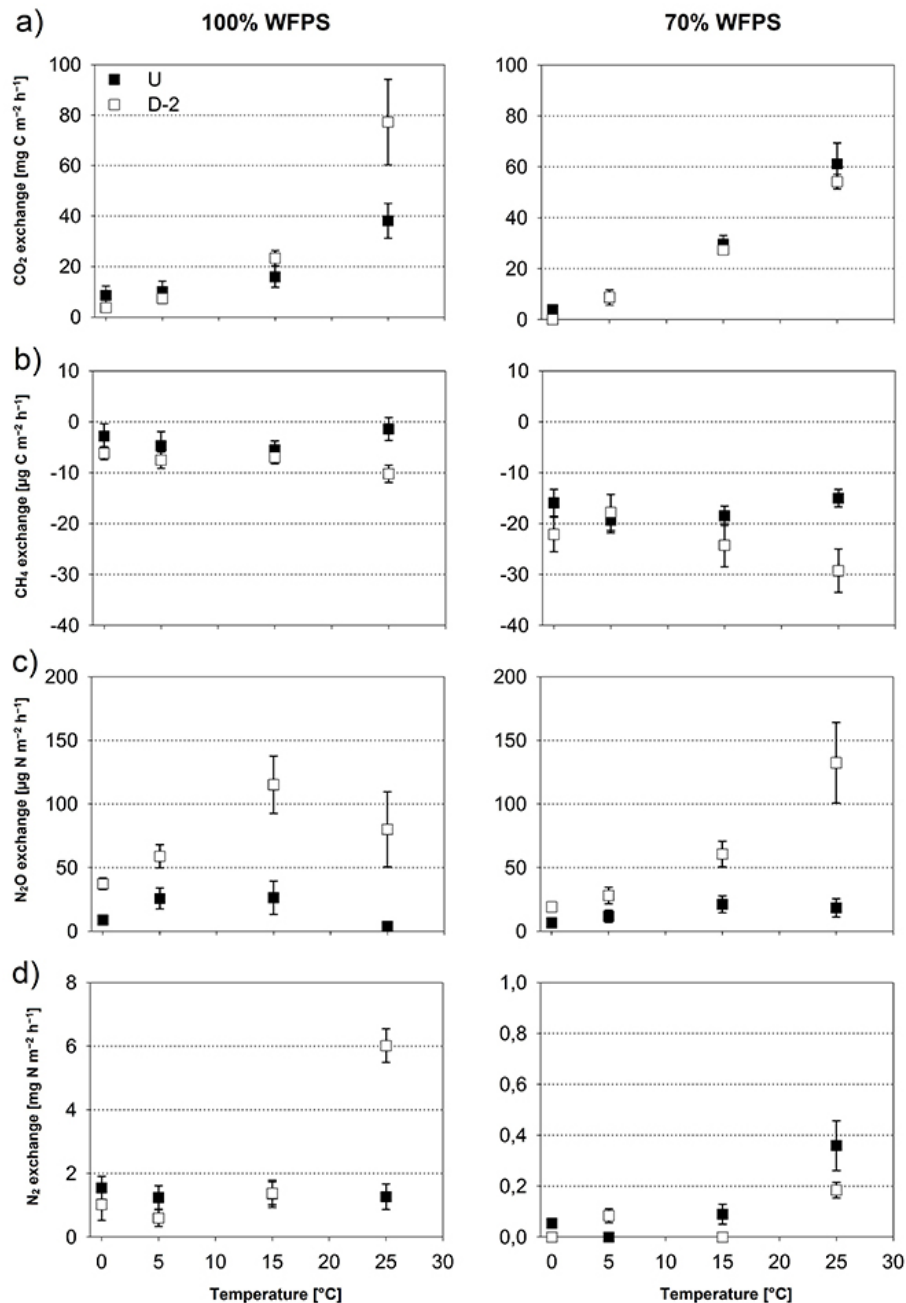


Figure 7. Mean (\pm SE, $n = 5$) of CO₂ (a), CH₄ (b), N₂O (c) and N₂ (d) exchange rates per water-filled pore space (vol. %; 70% for D-2 and 83% for U), temperature (°C) and site treatment. U = undrained; D-2 = drained 2. Please note the different scales for the N₂ exchange rates.

the drained site at 70% and in particular 100% WFPS and in samples of the undrained site at 83% WFPS.

The high N₂ emissions observed at 100% WFPS resulted in low N₂O/N₂ ratios, with mean values of 0.03 ± 0.01 (U) and 0.10 ± 0.02 (D-2). A similarly low N₂O/N₂ ratio (mean value of 0.12 ± 0.03) were found at 83% WFPS for the samples from the U site, as a result of the low N₂O emissions. In contrast, the samples from the drained site D-2 showed a considerably higher N₂O/N₂ ratio, with a mean value of

0.62 ± 0.11 (note that in the case of zero N₂ fluxes no ratio was calculated). No relationship between temperature and N₂O/N₂ ratio was observed for either soil moisture contents.

4 Discussion

4.1 Nitrogen mineralization and transformation processes

For both drained sites, the NNM rates observed (518–653 kg N ha⁻¹ yr⁻¹) are at the high end of NNM rates given in the literature. Janiesch (1978) and Janiesch et al. (1991) reported NNM rates of up to 500 kg ha⁻¹ yr⁻¹ (0–15 cm soil depth) and of up to 321.2 kg ha⁻¹ yr⁻¹ (0–10 cm soil depth) for different *Alnus glutinosa* forests from degraded fen peatlands in northern Germany. The significantly lower NNM rates from the undrained site are in the range of NNM rates reported for other seminatural black alder forests (Janiesch, 1978; Janiesch et al., 1991).

The compiled values from the literature and the results of the present study indicate an increasing NNM rate in black alder forests with increasing degradation of the fen peatland. In forest soils, high NNM rates are generally related to narrow C/N ratios (Gundersen et al., 1998; Ollinger et al., 2002), which are also characteristic for alder swamps (Mäkinen, 1979) and which were observed in the present study. Typically NNM rates for deciduous stands range between 50 to 150 kg N ha⁻¹ yr⁻¹ (Aber et al., 1989). The considerably higher NNM rates measured in the present study compared to those of other deciduous forests can partly be attributed to the high amount of easily decomposable organic nitrogen which becomes incorporated into the forest ecosystem through symbiotic atmospheric N₂ fixation by *Frankia* actinomycetes (Kätzel, 2003). Dittert (1992) estimated N₂ fixation rates of between 40 to 85 kg N ha⁻¹ yr⁻¹ for a black alder stand in northern Germany. Comparable and even higher values have also been reported for grey alder stands (e.g., Rytter et al., 1991; Löhmus et al., 2002; Mander et al., 2005; Uri et al., 2011). Additionally, drainage of histosols supplies large amounts of N through mineralization of ancient organic matter (Klemetsson et al., 2005). However, the distinct differences in the C and N contents of the drained sites did not result in significantly different NNM rates in the present study. Low retranslocation of nitrogen from senescing leaves to the alder tree (Mander et al., 1997; Löhmus et al., 2002; Uri et al., 2011) causes high contents of N and narrow C/N ratios of the foliage, favoring the fast decomposition of the leaf litter (Struwe and Kjølner, 1990; Rytter et al., 1991; Löhmus et al., 2002; Uri et al., 2011). The organic surface layer at the drained sites was classified as L-mull humus type, indicating the fast decomposition of the incorporated alder leaves.

Beside substrate chemistry, moisture content together with temperature are considered as the most important abiotic factors influencing biogeochemical transformation processes (Tietema et al., 1992). In general, increasing moisture contents stimulate the biogeochemical processes up to a threshold value where anaerobicity can limit microbial activity (Tietema et al., 1992). Temperature has a similar effect

on microbial activity, due to the fact that rates of enzymatic processes generally increase with increasing temperature (Michaelis and Menten, 1913). This finding becomes apparent in the Gaussian relationship observed between NNM rates in 0–10 cm soil depth, mean WFPS and mean temperature in –5 cm soil depth during the incubation period (Fig. 4). Significant effects of soil moisture and temperature on NNM or nitrification rates were also reported by other studies (e.g., Kowalenko and Cameron, 1976; Goodroad and Keeney, 1984; Gonçalves and Carlyle, 1994). The minor reduction in N turnover observed with increasing soil depth furthermore reflects the influence of aeration and temperature on mineralization processes. We attributed the significantly lower NNM rates at the undrained site to the limitation of microorganisms by anaerobicity due to the permanently high water levels. The oxygen deficit at the undrained site also explained why NNM was solely determined by net ammonification. Events of NO₃⁻ presence and NO₃⁻ consumption in the upper soil layer suggest that in periods of low water level net nitrification also occurs at the undrained site. In contrast, at the well-aerated drained sites, the NH₄⁺ produced becomes immediately oxidized to NO₃⁻, hence net nitrification entirely controls the NNM. However, using NNM rates as indicators of soil N dynamics bears the risk of considerably underestimating the intensity and complexity of the real N fluxes (Augustin, 2003); thus, further investigation should rather use the ¹⁵N isotope dilution method (e.g., Davidson et al., 1991) for measuring gross rates of all relevant N turnover processes.

The permanently high mineral N contents detected in the probed soil depth probably indicate that the alder forest investigated has reached N saturation, due to the fact that the availability of N exceeds the biotic uptake capacity of the system (Aber et al., 1989). High contents of available NO₃⁻ in the soil carry the risk of leaching or gaseous losses (Robertson, 1982). Several studies reported NO₃⁻ losses by leaching from soils under alder stands (e.g., Binkley et al., 1992; Van Miegroet et al., 1992; Compton et al., 2003; Uri et al., 2011). The slightly higher NO₃⁻ contents but lower NNM rates observed in the soil depth of 10–20 cm compared to the soil depth of 0–10 cm at the drained sites probably indicate leaching of NO₃⁻ into deeper soil layers. Analysis of groundwater samples from the sites investigated showed nitrate contents of up to 36.2 mg L⁻¹ and dissolved organic nitrogen (DON) contents of up to 2.8 mg L⁻¹ (B. Tiemeyer, personal communication, 2013), confirming the earlier assumption of N leaching. Nitrate leaching into the anaerobic peat profile can result in enhanced denitrification (Regina et al., 1996), wherein the ratio of N₂O/N₂ depends on the residence time of N₂O on its way from the production site in the anaerobic subsoil to the atmosphere (van Groenigen et al., 2005).

4.2 Factors controlling temporal and site-specific variation in N₂O and N₂ fluxes

In the present study, field N₂O fluxes observed at the drained sites are very low. Different studies reported considerably higher values for N₂O emissions from drained black alder stands, varying from 5 to 75 kg N ha⁻¹ yr⁻¹ (Mogge et al., 1998; Augustin, 1998; Brumme et al., 1999; Merbach et al., 2001; Hefting et al., 2003; von Arnold et al., 2005). According to Klemmedtsson et al. (2005), NO₃⁻ availability is the main driver of N₂O emissions from drained histosols. However, despite distinct differences in the NO₃⁻ contents and NNM rates, significantly different N₂O emissions between the three sites were not found in the present study. This was in contrast to our hypothesis that accelerated N turnover and N mineralization leads to significantly increased amounts of N₂O emissions. We cannot rule out, however, that we may have missed high N₂O events on the drained sites due to our regular measurement intervals. In addition many wetland adapted trees such as alder can mediate N₂O fluxes from the soil to the atmosphere through the stem (Rusch and Rennenberg, 1998; Pangala et al., 2012; Machacova et al., 2013). This flux was not taken into account in the present study so that this study may underestimate the N₂O emissions from the alder ecosystem.

In the alder forest investigated, temperature in -2 cm soil depth and the GW level best explained field N₂O flux rates, whereas no relationship was found between field N₂O fluxes and the amount of NO₃⁻ in the soil. It is well known that temperature is a key variable affecting the emission rates of N₂O because both nitrification and denitrification are microbial processes (Firestone and Davidson, 1989; Maag and Vinther, 1996; Smith et al., 1998; Dobbie and Smith, 2001). Higher soil moisture content increases N₂O emissions through higher denitrification rates (Wolf and Russow, 2000). In our study, however, temperature and GW only explained 37 % of the spatiotemporal variation of mean N₂O flux rates. This demonstrates the complex interlinkage of the controlling factors for N₂O emissions, as reported for agricultural soils by Jungkunst et al. (2006). According to Couwenberg et al. (2011), mean annual GW levels below -15 cm show a wide range of N₂O emissions in fens; in contrast, Jungkunst et al. (2004) found highest annual N₂O emissions in a Norway spruce stand (black forest, southwest Germany) at a GW level of -20 cm, whereas higher or lower GW levels decreased the emissions. However in the present study, differences observed in the GW levels were only small between the drained sites, resulting in comparable annual N₂O emissions. The observed cubic response to the GW level in our N₂O model reveals maximum N₂O emissions at a certain GW level. Perhaps it could be assumed that a mean GW level between the levels measured at the observed sites D-1 and U would result in enhanced N₂O emissions at the present black alder forest. Indeed, Brumme et al. (1999) reported that small

seasonal fluctuations of the GW level seem to be more important than the mean GW level.

The overall results from the laboratory experiment lead to the conclusion that the incorrect setting of the WFPS to 83 % only marginally affected the responsiveness of samples from site U compared to 100 % WFPS treatments as well as to the samples from site D-2. Nevertheless, we cannot totally exclude the possibility that the incorrect adjustment lowered the gaseous N losses from these samples. However, in the laboratory experiment, significantly different N₂O emissions were not observed between the two adjusted soil moisture contents, but total denitrification was considerably higher at 100 % WFPS compared to 70/83 % WFPS for both sites. This was in line with investigations by Scholefield et al. (1997), who found a greater than 50-fold increase in denitrification activity with increasing WFPS from 70 % to 90 %. Beside soil moisture, the dependency of denitrification activity on temperature, as found for field N₂O fluxes, becomes even more apparent regarding the results from the incubation experiment, particularly for samples from site D-2. Additionally, our results reveal that the production of N₂ increased more with increasing temperature than the production of N₂O, which was in line with Maag and Vinther (1996). Higher denitrification activity with increasing temperature was also reported by several other studies (e.g., Dobbie and Smith, 2001; Schindelbacher et al., 2004; Schauffer et al., 2010). Butterbach-Bahl et al. (2013) reported that the Q_{10} of denitrification exceeds the Q_{10} of soil respiration and attributed this to a tight coupling between the microbial C and N cycles. Additionally, denitrification is indirectly affected by the temperature-induced respiratory depletion of soil oxygen concentration (Butterbach-Bahl et al., 2013).

The proportion of N₂O emissions at 100 % WFPS amounted to ~1 to 6 % and to ~0.7 to 2 % of total N release from denitrification for samples from site D-2 and U, indicating that in the present alder stand losses of N₂O are only of minor importance compared to N₂ losses at water-saturated conditions. This agrees with findings that, with increasing anoxic conditions, the percentage of N₂ increases until it becomes the major gas evolved (Rolston et al., 1978; Davidson, 1991). Indeed several studies reported that high contents of available NO₃⁻ result in the inhibition of N₂O reductase activity (Blackmer and Bremner, 1978; Firestone et al., 1979; Weier et al., 1993; Regina et al., 1996). However, for the present study it is not possible to state conclusively to what extent the probably higher NO₃⁻ availability inhibits the conversion of N₂O to N₂ at samples from site D-2. N₂O fluxes only declined in D-2 samples at water-saturated conditions and 25 °C with simultaneously exponentially increasing N₂ fluxes. While this mechanism supports our hypothesis that N₂O release is displaced by N₂ losses during periods of temporarily high water levels, the field observations never reached the point in which the decreasing N₂O : N₂ ratio overcompensated the increasing denitrification rate.

In contrast to the field observations, significant differences in the N_2O fluxes between the two sites investigated were found at both soil moisture contents in the incubation experiment conducted, mainly due to the distinct differences in the N_2O reaction to temperature. Our data have shown that denitrification was limited by temperature at the drained site, but limited by other factors at the undrained site, like the availability of labile organic carbon, available NO_3^- or soil moisture (Letey et al., 1980; Knowles, 1982; Weier et al., 1993; Klemmedtsson et al., 2005). We can rule out that redox conditions are too anaerobic or microbial activity is less favorable for denitrification in samples from the undrained site in the incubation experiment because no CH_4 emissions were detected from water-saturated soil cores and aerobic and anaerobic CO_2 production was comparable and showed a distinct temperature response at both sites. However, at 100 % WFPS and 25 °C, the CO_2 to N gas emission ratio was 30 for site U and 13 for site D-2, indicating that anaerobic CO_2 production at site U was significantly more decoupled from denitrification activity than at the drained sites (Wang et al., 2011). Thus we attribute the small temperature response of N_2O and denitrification of the undrained site to NO_3^- limitation. The amount of NO_3^- in the solution from soil cores was not ascertained, but in the field net nitrification could never be detected at the undrained site. However, N_2O fluxes measured temporarily confirm our assumption that in periods of low water level net nitrification also occurs at the undrained site, albeit at a low level. Thus, we conclude that for most of the year denitrification activity is NO_3^- limited at the undrained site, confirming our hypothesis that NO_3^- limitation in permanently waterlogged peat soils results in negligible N_2O and N_2 losses.

For N_2 fluxes no comparable values from the field are available in the literature, but N_2 fluxes observed in the incubation experiment are in the range of other studies from drained and undrained fen ecosystems (e.g., Teiter and Mander, 2005; Wray and Bayley, 2007; Mander et al., 2008; Roobroeck et al., 2010; Soosaar et al., 2011).

In the present study less than 0.2 % of the nitrified N was emitted as N_2O -N at the drained sites. Similar or slightly higher values were reported by Klemmedtsson et al. (1988) and Maag and Vinther (1996). In the incubation experiment N_2O fluxes that were up to four times higher were measured in samples for site D-2 compared to the field fluxes. This indicates the potential of high N_2O emissions from the drained alder sites under different soil physical conditions.

The low N_2O and N_2 losses, despite very high N mineralization rates, perhaps indicate that, for most of the year, aerobic or only slightly anaerobic soil conditions are predominant at the drained sites. Thus, a certain proportion of the gaseous N may have been lost as nitric oxide (NO), a by-product of nitrification and an intermediate product of denitrification (Davidson, 1991). Several studies reported that net nitrification rates and NO_3^- in the soil solution are positively

correlated to NO fluxes in well-aerated soils (Skiba et al., 1998, 1999; Gasche and Papen, 1999; Venterea et al., 2003; Eickenscheidt and Brumme, 2012).

5 Conclusions

We studied N turnover processes in organic soils along a water table gradient in a nitrogen-saturated alder forest characterized by high mineral N concentrations. Drainage considerably increased net N mineralization and N turnover processes and shifted the dominant process from net ammonification to net nitrification, resulting in nitrate leaching. Surprisingly, N_2O emissions in the field remained low at the drained sites, but we cannot rule out that we have missed N_2O emission peaks. The incubation experiment supported the potential for high N_2O emissions at the drained alder sites. Temporarily water-saturated conditions enhanced N_2 emissions, whereas N_2O emissions remained unchanged. In contrast, the permanently high groundwater level at the undrained site prevented net nitrification and resulted in negligible gaseous N losses.

Acknowledgements. We thank N. Eickenscheidt (Thünen Institute) for helpful discussion and a critical review as well as B. Gusovius for technical support in the lab at the ZALF. Further, the authors thank S. Raspe from the Bavarian State Institute of Forestry for providing the N deposition data and B. Tiemeyer from the T. Institute for providing nitrate and dissolved organic nitrogen concentration data of the groundwater. Furthermore we thank S. Röhling from the Chair of Forest Yield Science at the Technical University Munich for providing forest growth data. This study was part of the joint research project “Organic soils: Acquisition and development of methods, activity data and emission factors for the climate reporting under LULUCF/AFOLU”, funded by the Thünen Institute.

Edited by: T. Laurila

References

- Aber, J. D., Nadelhoffer, K. J., Steudler, P., and Melillo, J. M.: Nitrogen saturation in northern forest ecosystems – Excess nitrogen from fossil fuel combustion may stress the biosphere, *BioScience*, 39, 378–386, 1989.
- Adams, M. A., Polglase, P. J., Attiwill, P. M., and Weston, C. J.: In situ studies of nitrogen mineralization and uptake in forest soils; some comments on methodology, *Soil Biol. Biochem.*, 21, 423–429, 1989.
- Augustin, J.: Erlenstandorte als Quelle und Senke klimarelevanter Spurengase. (Alder forests as a source and sink of Greenhouse gases), in: *Die Schwarz-Erle (Alnus glutinosa [L.] GAERTN.) im nordostdeutschen Tiefland*, Eberswalder Forstliche Schriftenreihe, 17, 46–59, 2003.
- Augustin, J., Merbach, W., and Rogasik, J.: Factors influencing nitrous oxide and methane emissions from minerotrophic fens in northeast Germany, *Biol. Fert. Soils*, 28, 1–4, 1998.

- Binkley, D., Sollins, P., Bell, R., Sachs, D., and Myrold, D.: Biogeochemistry of adjacent conifer and alder-conifer stands, *Ecology*, 73, 2022–2033, 1992.
- Blackmer, A. M. and Bremner, J. M.: Inhibitory effect of nitrate on reduction of N_2O to N_2 by soil microorganisms, *Soil Biol. Biochem.*, 10, 187–191, 1978.
- Bremner, J. M. and Blackmer, A. M.: Terrestrial nitrification as a source of atmospheric nitrous oxide, in: *Denitrification, Nitrification and Nitrous Oxide*, edited by: Delwiche, P. P., 151–170, Wiley, New York, 1981.
- Brumme, R., Borken, W., and Finke, S.: Hierarchical control on nitrous oxide emission in forest ecosystems, *Global Biogeochem. Cy.*, 13, 1137–1148, 1999.
- Butterbach-Bahl, K., Willibald, G., and Papen, H.: Soil core method for direct simultaneous determination of N_2 and N_2O emissions from forest soils, *Plant Soil*, 240, 105–116, 2002.
- Butterbach-Bahl, K., Baggs, E. M., Dannenmann, M., Kiese, R., and Zechmeister-Boltenstern, S.: Nitrous oxide emissions from soils: how well do we understand the processes and their controls?, *P. T. R. Soc. B*, 368, 20130122, doi:10.1098/rstb.2013.0122, 2013.
- Compton, J. E., Church, M. R., Larned, S. T., and Hogsett, W. E.: Nitrogen export from forested watershed in the Oregon Coast Range: The role of N_2 -fixing red alder, *Ecosystems*, 6, 773–785, 2003.
- Couwenberg, J., Thiele, A., Tannenberger, F., Augustin, J., Bärtsch, S., Dubovik, D., Liashchinskaya, N., Michaelis, D., Minke, M., Skuratovich, A., and Joosten, H.: Assessing greenhouse gas emissions from peatlands using vegetation as a proxy, *Hydrobiologia*, 674, 67–89, 2011.
- Crawley, M. J.: *The R Book*, John Wiley and Sons Ltd, Chichester, 942 pp., 2007.
- Crutzen, P. J.: the role of NO and NO_2 in the chemistry of the troposphere and stratosphere, *Annu. Rev. Earth Pl. Sc.*, 7, 443–472, 1979.
- Davidson, E. A.: Fluxes of nitrous and nitric oxide from terrestrial ecosystems. in: *Microbial Production and Consumption of Greenhouse Gases: Methane, Nitrogen Oxides and Halomethanes*, edited by: Rogers, J. E. and Whitman, W. P., American Society for Microbiology, Washington, D.C., 219–235, 1991.
- Davidson, E. A., Swank, W. T., and Perry, T. O.: Distinguishing between nitrification and denitrification as sources of gaseous nitrogen production in soil, *Appl. Environ. Microb.*, 52, 1280–1286, 1986.
- Del Grosso, S. J., Parton, W. J., Mosier, A. R., Ojima, D. S., Kulkarni, A. E., and Phongpan, S.: General model for N_2O and N_2 gas emissions from soils due to denitrification, *Global Biogeochem. Cy.*, 14, 1045–1060, 2000.
- Dilly, O., Blume, H. P., Kappen, L., Kutsch, W. L., Middelhoff, U., Wötzel, J., Buscot, F., Dittert, K., Bach, H. J., Mogge, B., Pritsch, K., and Munch, J. C.: Microbial processes and features of the microbiota in histosols from a black alder forest, *Geomicrobiol. J.*, 16, 65–78, 1999.
- Dittert, K.: Die stickstofffixierende Schwarzerle- Frankia-Symbiose in einem Erlenbruch der Bornhöveder Seenkette, *EcoSys. Suppl.*, 5, 1–98, 1992.
- Dobbie, K. E. and Smith, K. A.: The effects of temperature, water-filled pore space and land use on N_2O emissions from an imperfectly drained gleysol, *Eur. J. Soil Sci.*, 52, 667–673, 2001.
- Drösler, M.: Trace gas exchange and climatic relevance of bog ecosystems, Southern Germany, PhD thesis, Chair of Vegetation Ecology, Department of Ecology, Technical University Munich, 179 pp., 2005.
- Eickenscheidt, N. and Brumme, R.: NO_X and N_2O fluxes in a nitrogen-enriched European spruce forest soil under experimental long-term reduction of nitrogen depositions, *Atmos. Environ.*, 60, 51–58, 2012.
- Eickenscheidt, N., Brumme, R., and Veldkamp, E.: Direct contribution of nitrogen deposition to nitrous oxide emissions in a temperate beech and spruce forest – a ^{15}N tracer study, *Biogeosciences*, 8, 621–635, doi:10.5194/bg-8-621-2011, 2011.
- Firestone, M. K. and Davidson, E. A.: Microbial basis of NO and N_2O production and consumption in soil, in: *Exchange of trace gases between terrestrial ecosystems and the atmosphere*, edited by: Andreae, M. O. and Schimel, D. S., John Wiley and Sons Ltd., Chichester, U.K., 7–21, 1989.
- Firestone, M. K., Smith, M. S., Firestone, R. B., and Tiedje, J. M.: The influence of nitrate, nitrite, and oxygen on the composition of the gaseous products of denitrification in soil, *Soil Sci. Soc. Am. J.*, 43, 1140–1144, 1979.
- Gasche, R. and Papen, H.: A 3-year continuous record of nitrogen trace gas fluxes from untreated and limed soil of a N-saturated spruce and beech forest ecosystem in Germany – 2. NO and NO_2 fluxes, *J. Geophys. Res.-Atmos.*, 104, 18505–18520, 1999.
- Gonçalves, J. L. M. and Carlyle, J. C.: Modelling the influence of moisture and temperature on net nitrogen mineralization in a forested sandy soil, *Soil Biol. Biochem.*, 26, 1557–1564, 1994.
- Goodroad, L. L. and Keeney, D. R.: Nitrous oxide production in aerobic soils under varying pH, temperature and water content, *Soil Biol. Biochem.*, 16, 39–43, 1984.
- Gundersen, P., Emmett, B. A., Kjonaas, O. J., Koopmans, C. J., and Tietema, A.: Impact of nitrogen deposition on nitrogen cycling: a synthesis of NITREX-data, *Forest Ecol. Manag.*, 101, 37–55, 1998.
- Hahn-Schöfl, M., Zak, D., Minke, M., Gelbrecht, J., Augustin, J., and Freibauer, A.: Organic sediment formed during inundation of a degraded fen grassland emits large fluxes of CH_4 and CO_2 , *Biogeosciences*, 8, 1539–1550, doi:10.5194/bg-8-1539-2011, 2011.
- Hefting, M. M., Bobbink, R., and Caluwe, H.: Nitrous oxide emission and denitrification in chronically nitrate-loaded riparian buffer zones, *J. Environ. Qual.*, 32, 1194–1203, 2003.
- Hothorn, T., Bretz, F., Westfall, P., Heiberger, R. M., and Schuetzenmeister, A.: Simultaneous Inference in General Parametric Models: R package version 1.2-17, <http://cran.rproject.org/web/packages/multcomp/index.html>, 2013.
- IPCC: Chapter 11: N_2O Emissions from managed soils, and CO_2 emissions from lime and urea application, in: *IPCC guidelines for national greenhouse gas inventories*, edited by: Eggleston, H. S., Buendia, L., Miwa, K., Ngara, T., and Tanabe, K., IGES, Hayama, Japan, 2006.
- IPCC: Changes in atmospheric constituents and in radiative forcing, in: *Climate Change 2007: The physical science basis. Contribution of Working Group I to the Fourth Assessment Report of the Intergovernmental Panel on Climate Change*, edited by:

- Solomon, S., Qin, D., Manning, M., Chen, Z., Marquis, M., Averyt, K. B., Tignor, M., and Miller, H. L., Cambridge University Press, Cambridge, UK and New York, USA, 2007.
- Janiesch, P., Mellin, C., and Müller, E.: Die Stickstoff-Netto-Mineralisierung in naturnahen und degradierten Erlenbruchwäldern als Kenngröße zur Beurteilung des ökologischen Zustandes, Poster zu Verhandlungen der Gesellschaft für Ökologie (Freising-Weihenstephan 1990), Band 20, 353–359, 1991.
- Jungkunst, H. F., Fiedler, S., and Stahr, K.: N₂O emissions of a mature Norway spruce (*Picea abies*) stand in the Black Forest (southwest Germany) as differentiated by soil pattern, *J. Geophys. Res.*, 108, D07302, doi:10.1029/2003JD004344, 2004.
- Junkunst, H. F., Freibauer, A., Neufeldt, H., and Bareth, G.: Nitrous oxide emissions from agricultural land use in Germany – a synthesis of available annual field data, *J. Plant Nutr. Soil Sc.*, 169, 341–351, 2006.
- Kätzel, R.: Zum physiologischen Anpassungspotenzial der Schwarz-Erle, In: Die Schwarz-Erle (*Alnus glutinosa* [L.] GAERTN.) im nordostdeutschen Tiefland, Eberswalder Forstliche Schriftenreihe, 17, 39–45, 2003.
- Klemmedtsen, L., Svensson, B. H., and Rosswall, T.: A method of selective inhibition to distinguish between nitrification and denitrification as sources of nitrous oxide in soil, *Biol. Fert. Soils*, 6, 112–119, 1988.
- Klemmedtsen, L., von Arnold, K., Weslien, P., and Gundersen, P.: Soil CN ratio as a scalar parameter to predict nitrous oxide emissions, *Glob. Change Biol.*, 11, 1142–1147, 2005.
- Knowles, R.: Denitrification, *Microbiol. Rev.*, 46, 43–70, 1982.
- Kowalenko, C. G. and Cameron, D. R.: Nitrogen transformations in an incubated soil as affected by combinations of moisture content and temperature and adsorption – fixation of ammonium, *Can. J. Soil Sci.*, 56, 63–70, 1976.
- Letey, J., Valoras, N., Hadas, A., and Focht, D. D.: Effect of air-filled porosity, nitrate concentration, and time on the ratio of N₂O/N₂ evolution during denitrification, *J. Environ. Qual.*, 9, 227–231, 1980.
- Livingston, G. P. and Hutchinson, G. L.: Enclosure-based measurement of trace gas exchange: application and sources of error, in: *Biogenic Trace Gases: Measuring Emissions from Soil and Water*, edited by: Matson, P. A. and Harriss, R. C., Blackwell Science, Cambridge, 14–50, 1995.
- Löhmus, K., Kuusemets, V., Ivask, M., Teiter, S., Augustin, J., and Mander, Ü.: Budgets of nitrogen fluxes in riparian grey alder forests, *Arch. Hydrobiol. Suppl.*, 141, 321–332, 2002.
- Maag, V. and Vinther, F. P.: Nitrous oxide emission by nitrification and denitrification in different soil types and at different soil moisture contents and temperatures, *Appl. Soil Ecol.*, 4, 5–14, 1996.
- Machacova, K., Papen, H., Kreuzwieser, J., and Rennenberg, H.: Inundation strongly stimulates nitrous oxide emissions from stems of the upland tree *Fagus sylvatica* and the riparian tree *Alnus glutinosa*, *Plant Soil*, 364, 287–301, doi:10.1007/s11104-012-1359-4, 2012.
- Mäkinen, A.: Peat quality and peat formation in Finnish alder swamps, in: *Classification of Peat and Peatlands*, edited by: Kivinen, E., Heikurainen, L., and Pakarinen, P., International Peat Society, Helsinki, 171–183, 1979.
- Mander, Ü., Kuusemets, V., Löhmus, K., and Mäuring, T.: Efficiency and dimensioning of riparian buffer zones in agricultural catchments, *Ecol. Eng.*, 8, 299–324, 1997.
- Mander, Ü., Kuusemets, V., Löhmus, K., Mäuring, T., Teiter, S., and Augustin, J.: Nitrous oxide, dinitrogen, and methane emission in a subsurface flow constructed wetland, *Water Sci. Technol.*, 4, 135–142, 2003.
- Mander, Ü., Löhmus, K., Kuusemets, V., Ivask, M., Teiter, S., and Augustin, J.: Budgets of nitrogen and phosphorus fluxes in riparian grey alder forests, *Natural and Constructed Wetlands: Nutrients, Metals and Management*, 1–19, 2005.
- Mander, Ü., Löhmus, K., Teiter, S., Mäuring, T., Nurk, K., and Augustin, J.: Gaseous fluxes in the nitrogen and carbon budgets of subsurface flow constructed wetlands, *Sci. Total Environ.*, 404, 343–353, 2008.
- Merbach, W., Augustin, J., and Gans, W.: Nitrous oxide emissions from fen mires in dependence of anthropogenic activities, *J. Appl. Bot.*, 75, 118–123, 2001.
- Michaelis, L. and Menten, M. L.: Die Kinetik der Invertinwirkung, *Biochem. Z.*, 49, 333–369, 1913.
- Mogge, B., Kaiser, E. A., and Munch, J. C.: Nitrous oxide emissions and denitrification N-losses from forest soils in the Bornhöved lake region (northern Germany), *Soil Biol. Biochem.*, 30, 703–710, 1998.
- Ollinger, S. V., Smith, M. L., Martin, M. E., Hallett, R. A., Goodale, C. L., and Aber, J. D.: Regional variation in foliar chemistry and N cycling among forests of diverse history and composition, *Ecology*, 83, 339–355, 2002.
- Pangala, S. R., Moore, S., Hornibrook, E. R. C., and Gauci, V.: Trees are major conduits for methane egress from tropical forested wetlands, *New Phytol.*, 197, 524–531, 2012.
- R Development Core Team: R: A language and environment for statistical computing, R Foundation for Statistical Computing, Vienna, Austria, ISBN 3-900051-07-0, available at: <http://www.R-project.org>, 2010.
- Regina, K., Nykänen, H., Silvola, J., and Martikainen, P. J.: Fluxes of nitrous oxide from boreal peatlands as affected by peatland type, water table level and nitrification capacity, *Biogeochemistry*, 35, 401–418, 1996.
- Robertson, G. P.: Nitrification in forested ecosystems, *Philos. T. R. Soc. Lond.*, 296, 445–457, 1982.
- Rolston, D. E., Hoffman, D. L., and Toy, D. W.: Field measurements of denitrification: 1. Flux of N₂ and N₂O, *Soil Sci. Soc. Am. J.*, 42, 863–869, 1978.
- Roobroeck, D., Butterbach-Bahl, K., Brüggemann, N., and Boeckx, P.: Dinitrogen and nitrous oxide exchanges from an undrained monolith fen: short-term responses following nitrate addition, *Eur. J. Soil Sci.*, 61, 662–670, 2010.
- Rusch, H. and Rennenberg, H.: Black alder (*Alnus glutinosa* (L.) Gaertn.) trees mediate methane and nitrous oxide emission from the soil to the atmosphere, *Plant Soil*, 201, 1–7, 1998.
- Rytter, L., Arveby, A. S., and Granhall, U.: Dinitrogen (C₂H₂) fixation in relation to nitrogen fertilization of grey alder [*Alnus incana* (L.) Moench.] plantations in a peat bog, *Biol. Fert. Soils*, 10, 233–240, 1991.
- Schäfer, A. and Joosten, H. (Eds.): *Erlenaufforstung auf wiedervernässten Niedermooren. (Alnus afforestation on restored fen peatlands)*, Greifswald: Institute for Sustainable Development of Landscapes of the Earth, 68 pp. 2005.

- Schauffler, G., Kitzler, A., Schindlbacher, A., Skiba, U., Sutton, M. A., and Zechmeister-Boltenstern, S.: Greenhouse gas emissions from European soils under different land use: effects of soil moisture and temperature, *Eur. J. Soil Sci.*, 61, 683–696, 2010.
- Schindlbacher, A., Zechmeister-Boltenstern, S., and Butterbach-Bahl, K.: Effects of soil moisture and temperature on NO, NO₂, and N₂O emissions from European forest soils, *J. Geophys. Res.*, 109, D17302, doi:10.1029/2004JD004590, 2004.
- Scholefield, D., Hawkins, J. M. B., and Jackson, S. M.: Use of a flowing helium atmosphere incubation technique to measure the effects of denitrification controls applied to intact cores of a clay soil, *Soil Biol. Biochem.*, 29, 1337–1344, 1997.
- Skiba, U., Sheppard, L., Pitcairn, C. E. R., Leith, I., Crossley, A., van Dijk, S., Kennedy, V. H., and Fowler, D.: Soil nitrous oxide and nitric oxide emissions as indicators of elevated atmospheric N deposition rates in seminatural ecosystems, *Environ. Pollut.*, 102, 457–461, 1998.
- Skiba, U., Sheppard, L. J., Pitcairn, C. E. R., van Dijk, S., and Rossall, M.: The effect of N deposition on nitrous oxide and nitric oxide emissions from temperate forest soils, *Water Air Soil Poll.*, 116, 89–98, 1999.
- Smith, K. A., Thomson, P. E., Clayton, H., McTaggart, I. P., and Conen, F.: Effects of temperature, water content and nitrogen fertilisation on emissions of nitrous oxide by soil, *Atmos. Environ.*, 32, 3301–3309, 1998.
- Soosaar, K., Mander, Ü., Maddison, M., Kanal, A., Kull, A., Lõhmus, K., Truu, J., and Augustin, J.: Dynamics of gaseous nitrogen and carbon fluxes in riparian alder forests, *Ecol. Eng.*, 37, 40–53, 2011.
- Speir, T. W., Kettles, H. A., and More, R. D.: Aerobic emissions of N₂O and N₂ from soil cores: factors influencing production from ¹³N-labelled NO₃⁻ and NH₄⁺, *Soil Biol. Biochem.*, 27, 1299–1306, 1995.
- Struwe, S. and Kjølter, A.: Seasonality of denitrification in waterlogged alder stands, *Plant Soil*, 128, 109–113, 1990.
- Teiter, S. and Mander, Ü.: Emission of N₂O, N₂, CH₄ and CO₂ from constructed wetlands for wastewater treatment and from riparian buffer zones, *Ecol. Eng.*, 25, 528–541, 2005.
- Tietema, A., Warmerdam, B., Lenting, E., and Riemer, L.: Abiotic factors regulating nitrogen transformations in the organic layer of acid forest soils: Moisture and pH, *Plant Soil*, 147, 69–78, 1992.
- Uri, V., Lõhmus, K., and Tullus, H.: Annual net nitrogen mineralization in a grey alder (*Alnus incana* (L.) Moench) plantation on abandoned agricultural land, *Forest Ecol. Manag.*, 184, 167–176, 2003.
- Uri, V., Lõhmus, K., Mander, Ü., Ostonen, I., Aosaar, J., Maddison, M., Helmisaari, H. S., and Augustin, J.: Long-term effects on the nitrogen budget of a short-rotation grey alder (*Alnus incana* (L.) Moench) forest on abandoned agricultural land, *Ecol. Eng.*, 37, 920–930, doi:10.1016/j.ecoleng.2011.01.016, 2011.
- van Groenigen, J. W., Zwart, K. B., Harris, D., and van Kessel, C.: Vertical gradients of δ¹⁵N and δ¹⁸O in soil atmospheric N₂O – temporal dynamics in a sandy soil, *Rapid Commun. Mass Sp.*, 19, 1289–1295, 2005.
- van Miegroet, H., Homann, P. S., and Cole, D. W.: Soil nitrogen dynamics following harvesting and conversion of red alder and Douglas fir stands, *Soil Sci. Soc. Am. J.*, 56, 1311–1318, 1992.
- VDLUFA: Bestimmung von mineralischem (Nitrat-)Stickstoff in Bodenprofilen (Nmin- Labormethode), in: *Methodenbuch Teil 2*, edited by: VDLUFA, Speyer, Germany, 1997.
- Venterea, R. T., Groffman, P. M., Verchot, L. V., Magill, A. H., Aber, J. D., and Steudler, P. A.: Nitrogen oxide gas emissions from temperate forest soils receiving long-term nitrogen inputs, *Glob. Change Biol.*, 9, 346–357, 2003.
- von Arnold, K., Nilsson, M., Hånell, B., Weslien, P., and Klemmedtsen, L.: Fluxes of CO₂, CH₄ and N₂O from drained organic soils in deciduous forests, *Soil Biol. Biochem.*, 37, 1059–1071, 2005.
- Wang, R., Willibald, G., Feng, Q., Zheng, X., Liao, T., Brüggemann, N., and Butterbach-Bahl, K.: Measurement of N₂, N₂O, NO and CO₂ Emissions from Soil with the Gas-Flow-Soil-Core Technique, *Environ. Sci. Technol.*, 45, 6066–6072, 2011.
- Watts, S. and Seitzinger, S. P.: Denitrification rates in organic and mineral soils from riparian sites: a comparison of N₂ flux and acetylene inhibition methods, *Soil Biol. Biochem.*, 32, 1383–1392, 2000.
- Weier, K. L., Doran, J. W., Power, J. F., and Walters, D. T.: Denitrification and dinitrogen/nitrous oxide ratio as affected by soil water, available carbon, and nitrate, *Soil Sci. Soc. Am. J.*, 57, 66–72, 1993.
- Wichtmann, W. and Joosten, H.: Paludiculture: peat formation and renewable resources from rewetted peatlands, in: *IMCG-Newsletter 3/2007*, 24–28, 2007.
- Wolf, I. and Russow, R.: Different pathways of formation of N₂O, N₂ and NO in black earth soil, *Soil Biol. Biochem.*, 32, 229–239, 2000.
- Wray, H. E. and Bayley, S. E.: Denitrification rates in marsh fringes and fens in two boreal peatlands in Alberta, Canada, *Wetlands*, 27, 1036–1045, 2007.
- WRB, 2006 – IUSS Working Group: World Reference Base for Soil Resources 2006, 2nd Edn., World Soil Resources Reports No. 103, Rome, 2006