



Supplement of

Continental-scale impacts of intra-seasonal rainfall variability on simulated ecosystem responses in Africa

K. Guan et al.

Correspondence to: K. Guan (kaiyug@stanford.edu)

Supplement:

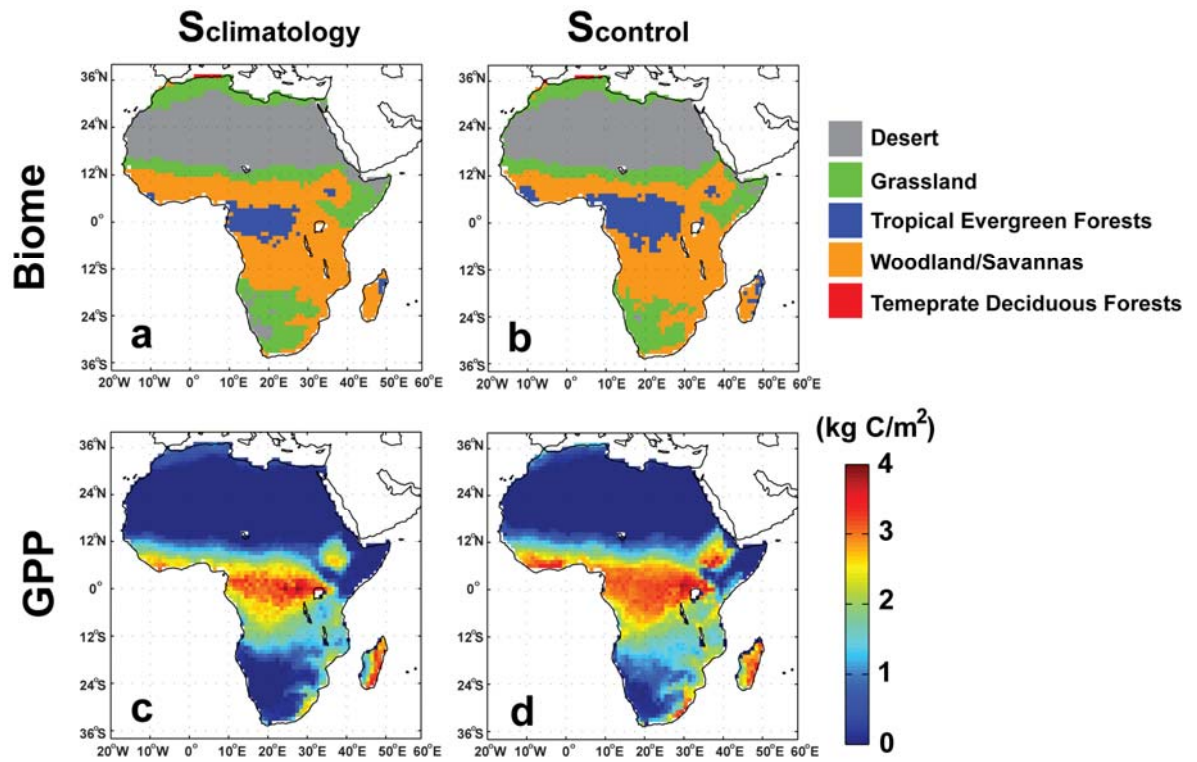


Figure S1. Comparison of biomes and annual GPP between $S_{climatology}$ and $S_{control}$ to test the validity of the synthetic weather generator. The biome definition follows Sato and Ise (2012).

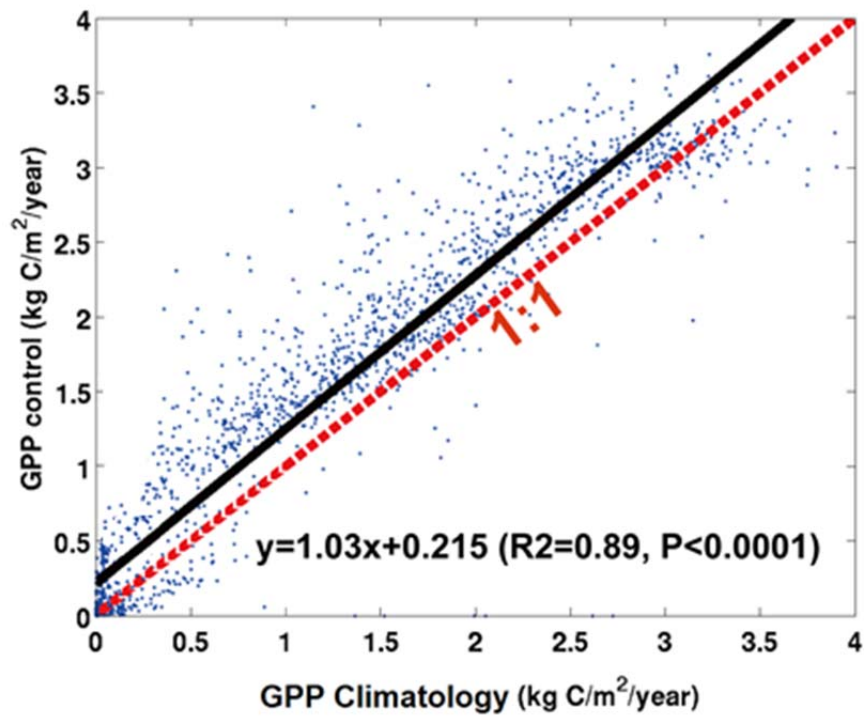


Figure S2. Comparison of simulated annual mean GPP using SEIB-DGVM in the $S_{\text{climatology}}$ and S_{control} runs.

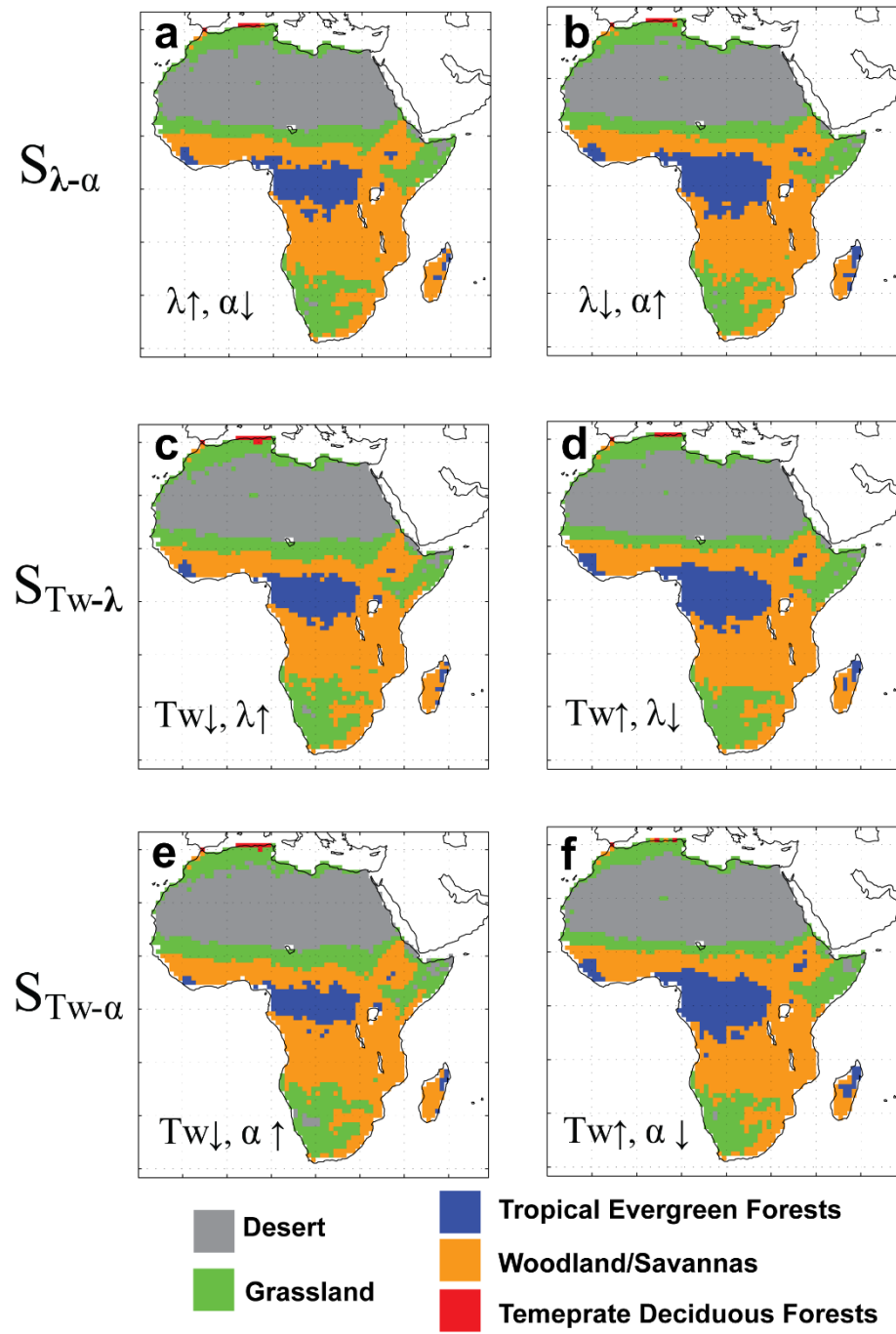


Figure S3. Simulated biomes for different experiments.

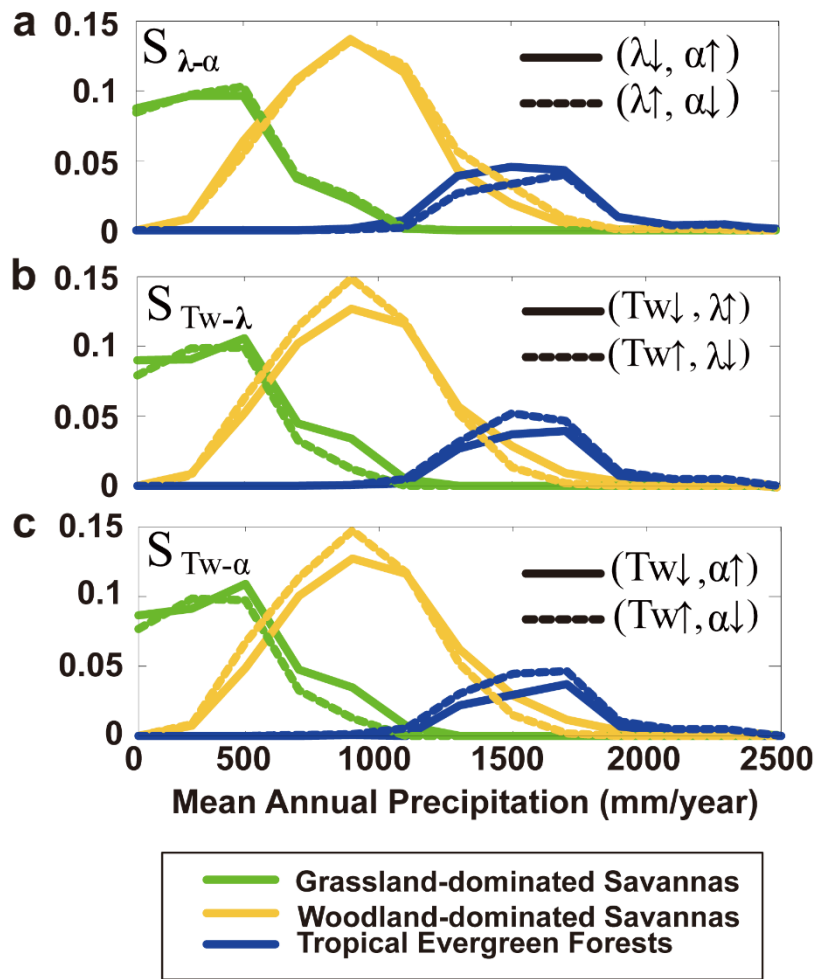


Figure S4. Normalized histograms of three simulated dominant biomes in the three experiments.

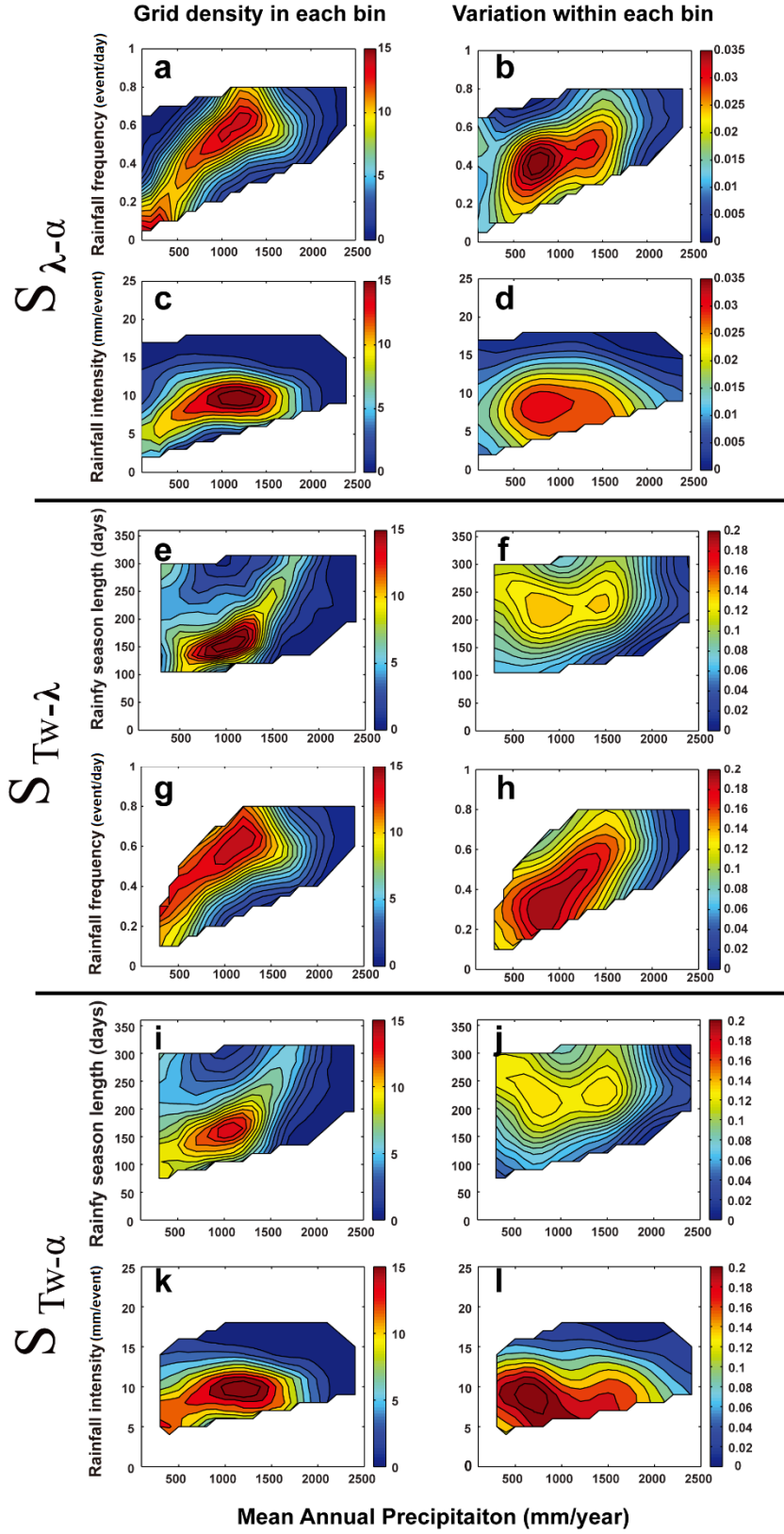


Figure S5. The sample size (n) in each bin (left column) and standard deviation (σ) in each bin (right column), corresponding to Figure 5. In Figure 5 right column, standard deviation (SE) is calculated as $SE = \sigma / \sqrt{n}$.