

Supplement of Biogeosciences, 12, 3805–3818, 2015
<http://www.biogeosciences.net/12/3805/2015/>
doi:10.5194/bg-12-3805-2015-supplement
© Author(s) 2015. CC Attribution 3.0 License.



Supplement of

Carbon stocks and soil sequestration rates of tropical riverine wetlands

M. F. Adame et al.

Correspondence to: M. F. Adame (f.adame@griffith.edu.au)

The copyright of individual parts of the supplement might differ from the CC-BY 3.0 licence.

1 Supplement

2

3 Table S1. Remote sensing products and standard terrain parameters for up-scaling

4 aboveground carbon (C) of mangroves of La Encrucijada Biosphere Reserve.

Aboveground C co-variable	Source	Date	Spatial resolution (m)	Provided by
NDVI values	SPOT 5 images (603/319, 604/320)	2005	10	CONABIO, obtained from Secretariat of the Navy in the frame of "Mexican mangroves, current state and long term monitoring"
HH backscattering	ALOS Palsar	2010	25	EORC, JAXA http://www.eorc.jaxa.jp/ALOS/en/palsar_fnf/fnf_index.htm
HV backscattering	ALOS Palsar	2010	25	http://www.eorc.jaxa.jp/ALOS/en/palsar_fnf/fnf_index.htm
SAGA GIS standard terrain parameters*	Digital Elevation Model	2013	15	INEGI, http://www.inegi.org.mx/geo/contenidos/datosrelieve/continental/Descarga.aspx

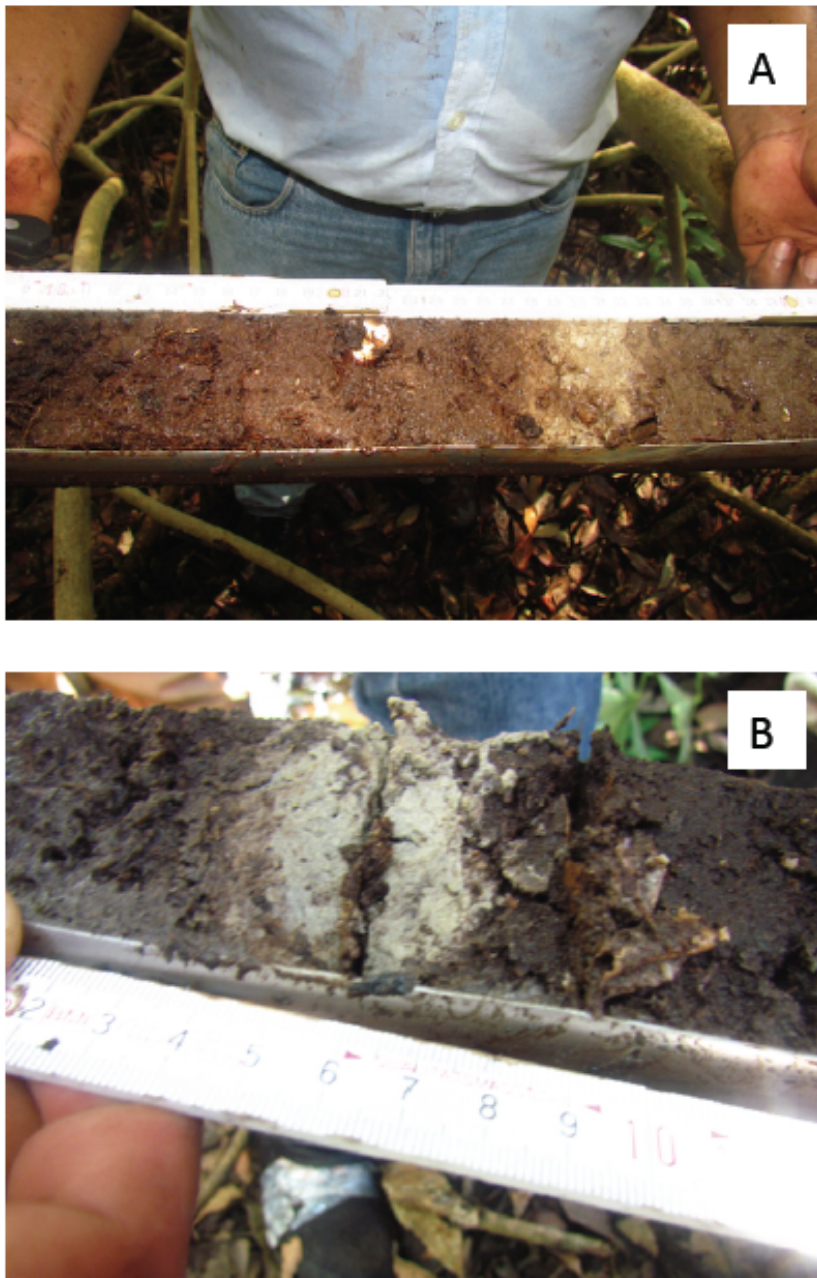
5 * Altitude above channel network, analytical hill shading, aspect, catchment area,

6 channel network base level, convergence index, ls factor, plan curvature, slope and

7 the topographic wetness index (Böhner, et al, 2006, Conrad, 2005)

8

9



10

11 Figure S1. Plinian deposit forming an ash horizon in soil cores from La Encrucijada

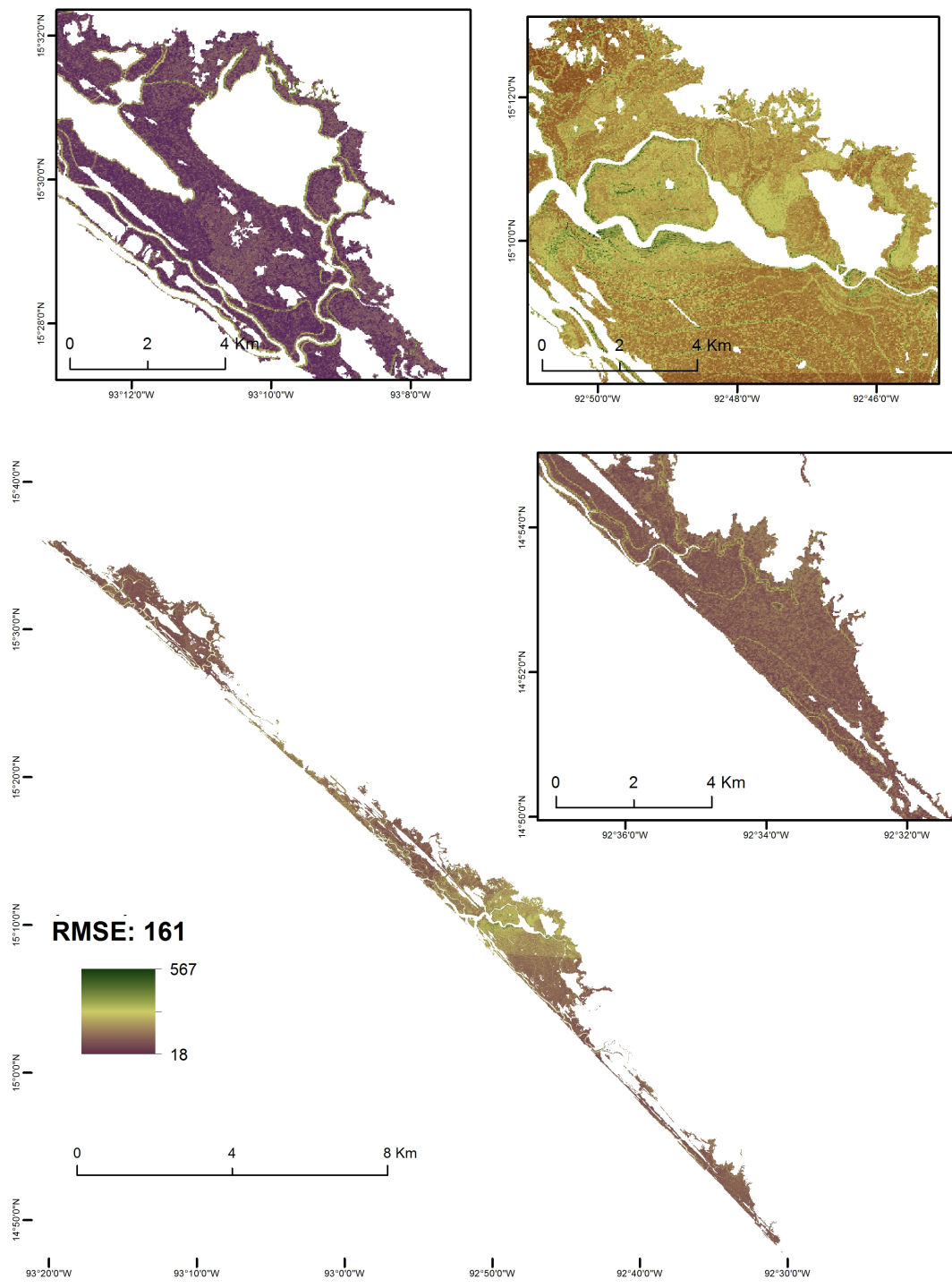
12 Biosphere Reserve. The ash was deposited during the eruption of Santa Maria's

13 volcano in 1902. The natural marker was used to estimate carbon sequestration rates

14 as C accumulated in the soil profile.

15

16



17

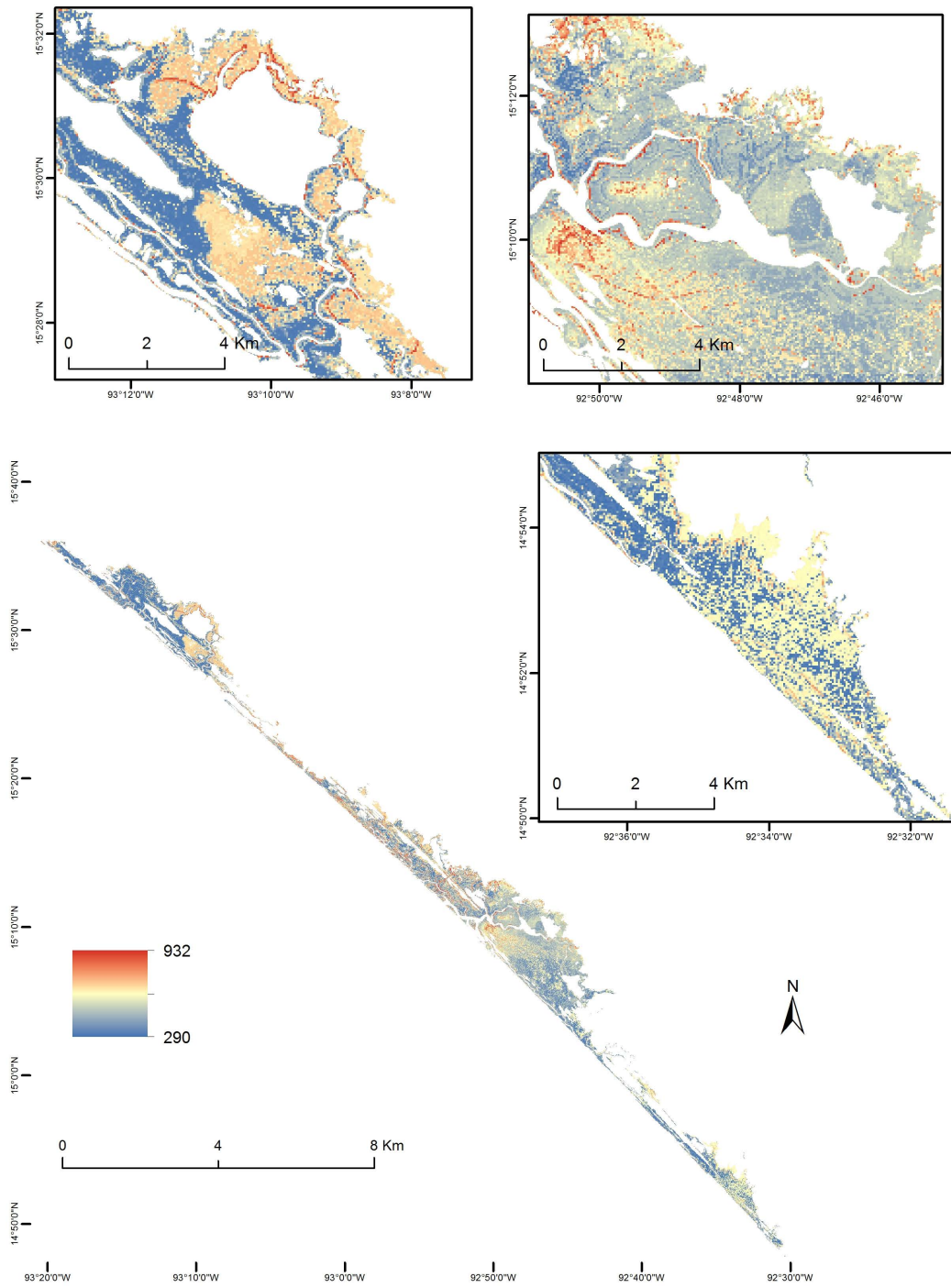
18 Figure S2. Aboveground C stocks (trees) (Mg ha^{-1}) estimated for the La Encrucijada

19 Biosphere Reserve

20

21

22



24

25 Figure S3. Uncertainty associated to aboveground C stock estimations (Mg ha⁻¹) within
26 La Encrucijada Biosphere Reserve

27