

Supplement of Biogeosciences, 12, 6637–6653, 2015
<http://www.biogeosciences.net/12/6637/2015/>
doi:10.5194/bg-12-6637-2015-supplement
© Author(s) 2015. CC Attribution 3.0 License.



Supplement of

Integrated radar and lidar analysis reveals extensive loss of remaining intact forest on Sumatra 2007–2010

M. B. Collins and E. T. A. Mitchard

Correspondence to: M. B. Collins (murray.collins@ed.ac.uk)

The copyright of individual parts of the supplement might differ from the CC-BY 3.0 licence.

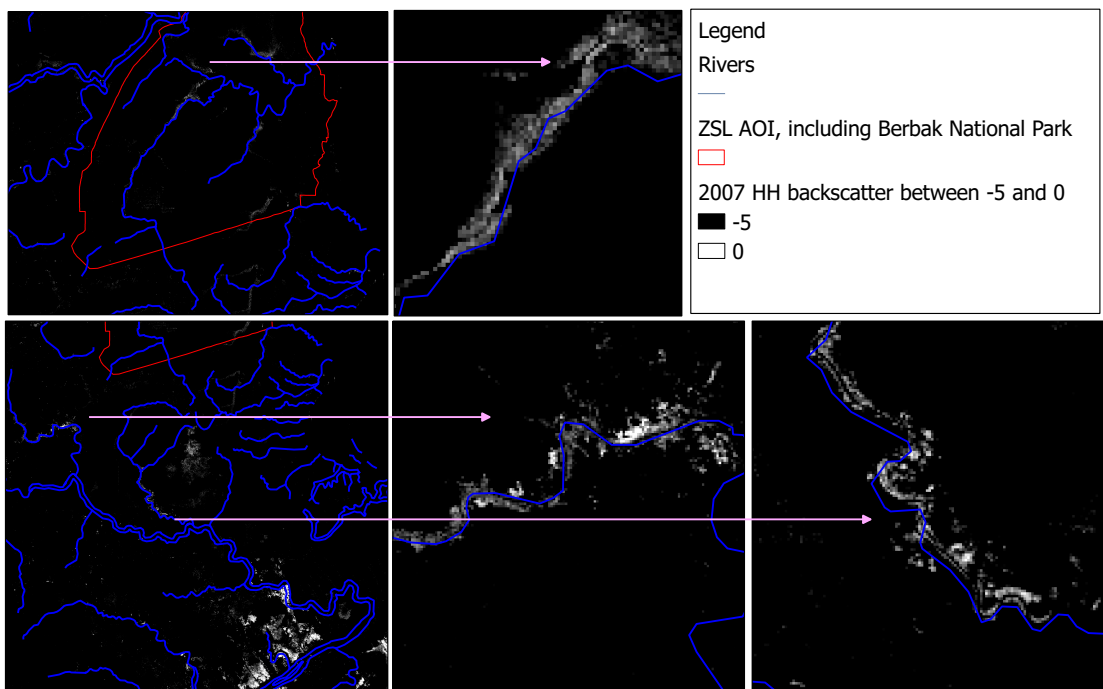


Figure 1: SI 1. This map shows the a shapefile of the rivers of Sumatra overlaid on the 2007 HH backscatter data, which is restricted to show only those values between -5 and 0. Areas <-5 are shown as black. The figures zoom in on areas next to rivers with high HH values (>-5)