

Supplement of Biogeosciences, 13, 1635–1645, 2016
<http://www.biogeosciences.net/13/1635/2016/>
doi:10.5194/bg-13-1635-2016-supplement
© Author(s) 2016. CC Attribution 3.0 License.



Biogeosciences  Open Access

Supplement of

Seasonal characterization of CDOM for lakes in semiarid regions of Northeast China using excitation–emission matrix fluorescence and parallel factor analysis (EEM–PARAFAC)

Ying Zhao et al.

Correspondence to: Kaishan Song (songks@iga.ac.cn)

The copyright of individual parts of the supplement might differ from the CC-BY 3.0 licence.

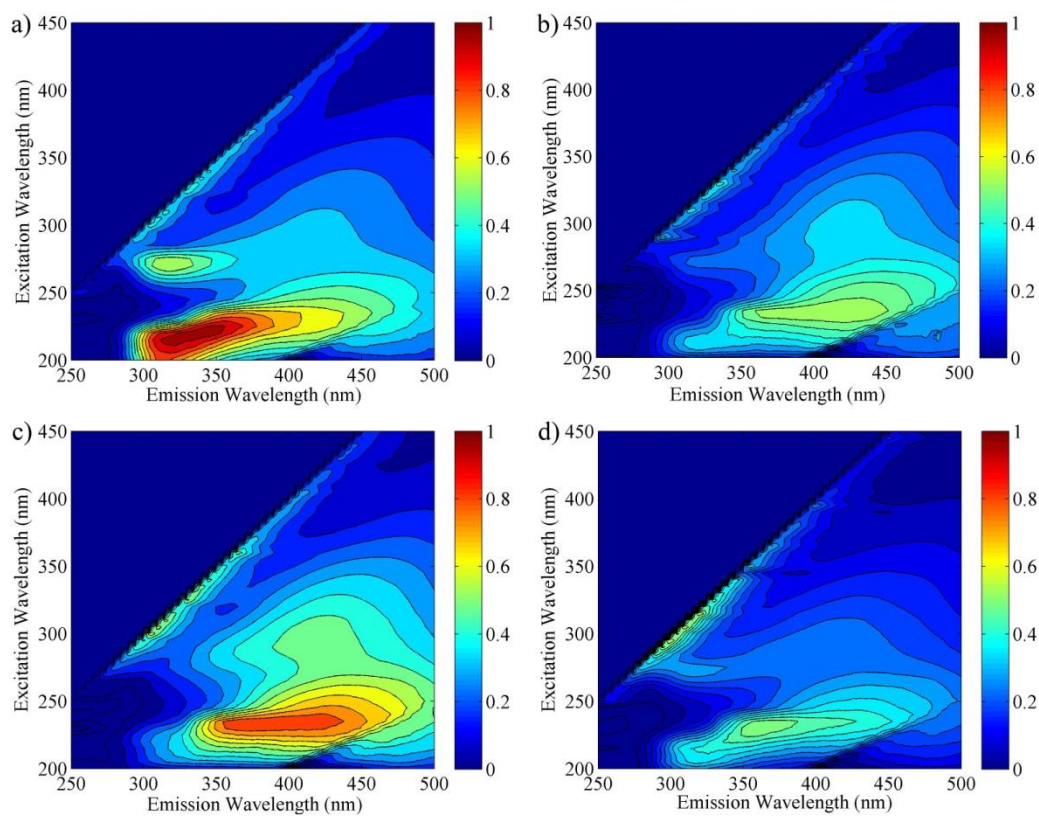


Figure S1. Examples of EEM for one water sample from Lake Xindianpao in the western part of Jilin in different seasons a) June 2013; b) August 2013; c) February 2014; d) April 2014 (Fluorescence is in Raman unit: nm^{-1}).

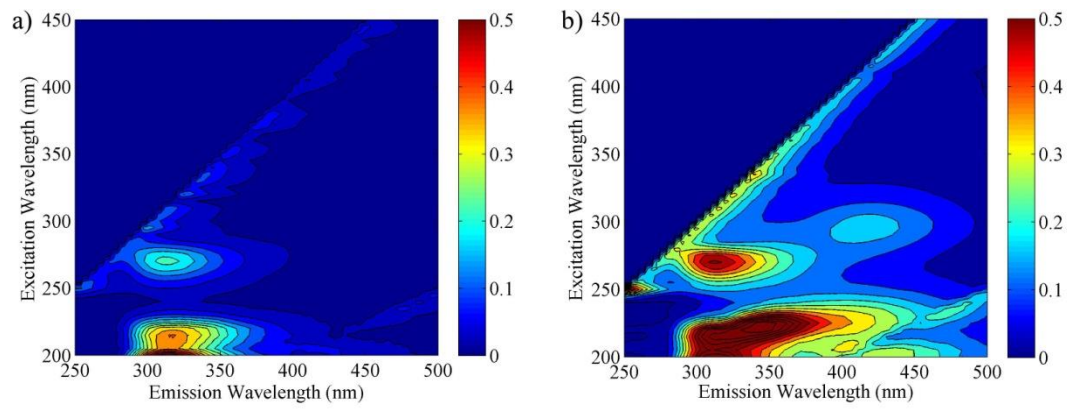


Figure S2. Representative examples of EEM for a) ice meltwater sample, and b) rainwater CDOM in the western part of Jilin (Raman: nm^{-1}).