



Supplement of

**Microbial methanogenesis in the sulfate-reducing zone of sediments in the
Eckernförde Bay, SW Baltic Sea**

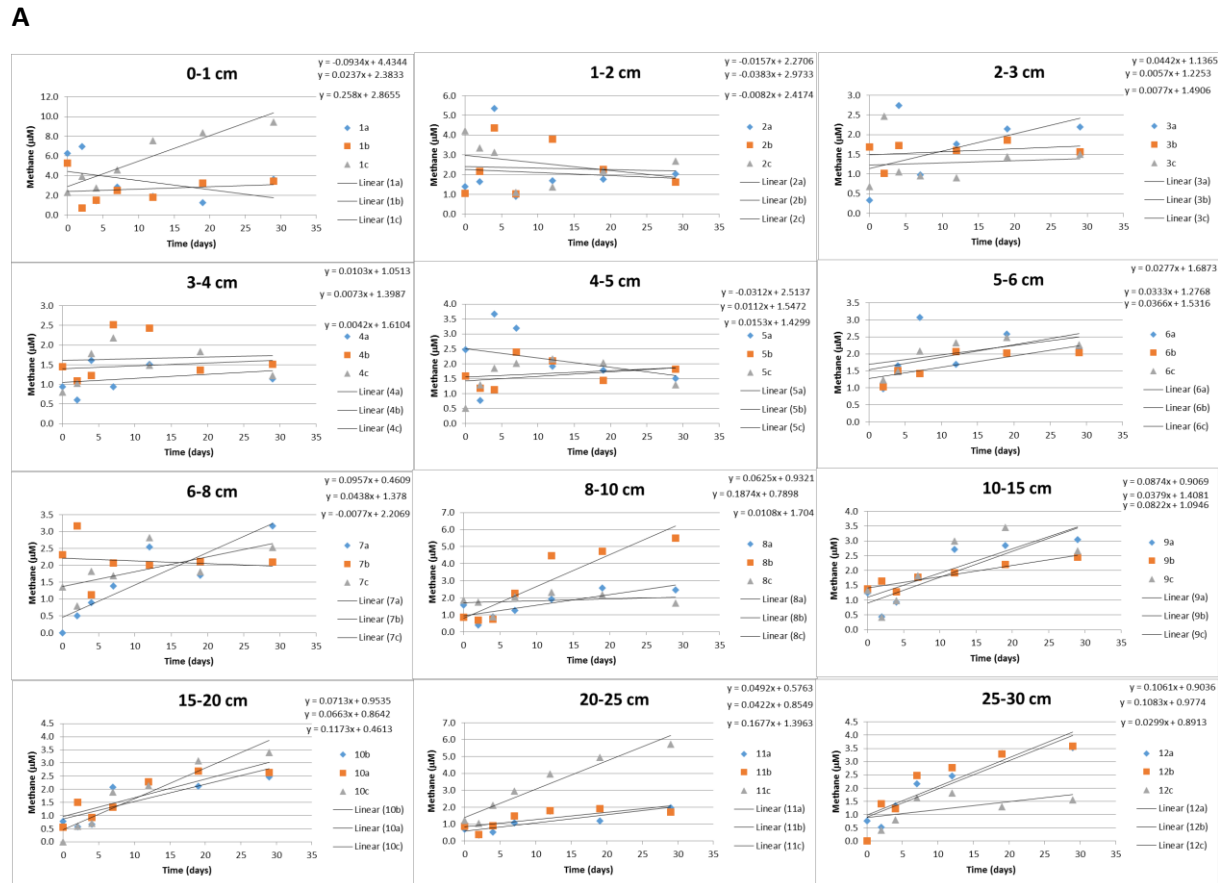
Johanna Maltby et al.

Correspondence to: Johanna Maltby (jmaltby@sjcme.edu) and Tina Treude (ttreude@g.ucla.edu)

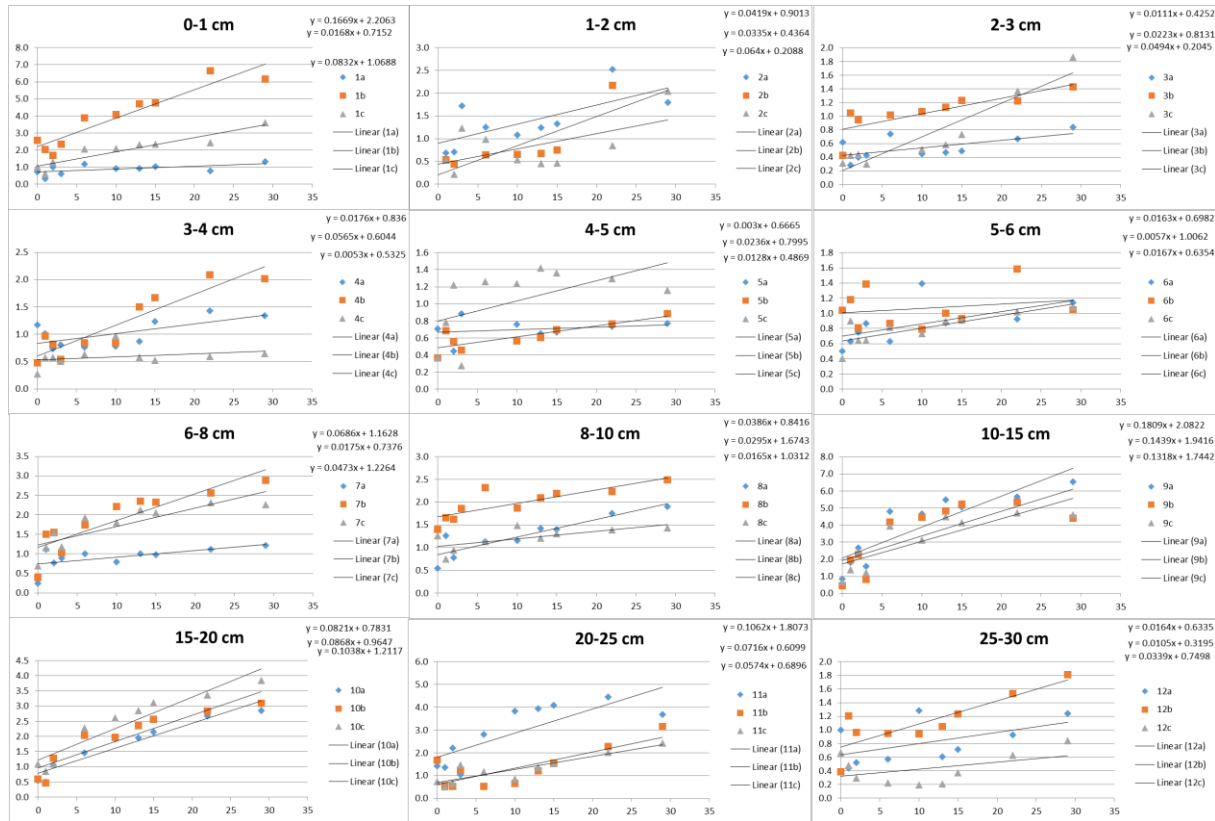
The copyright of individual parts of the supplement might differ from the CC BY 3.0 License.

Supplement

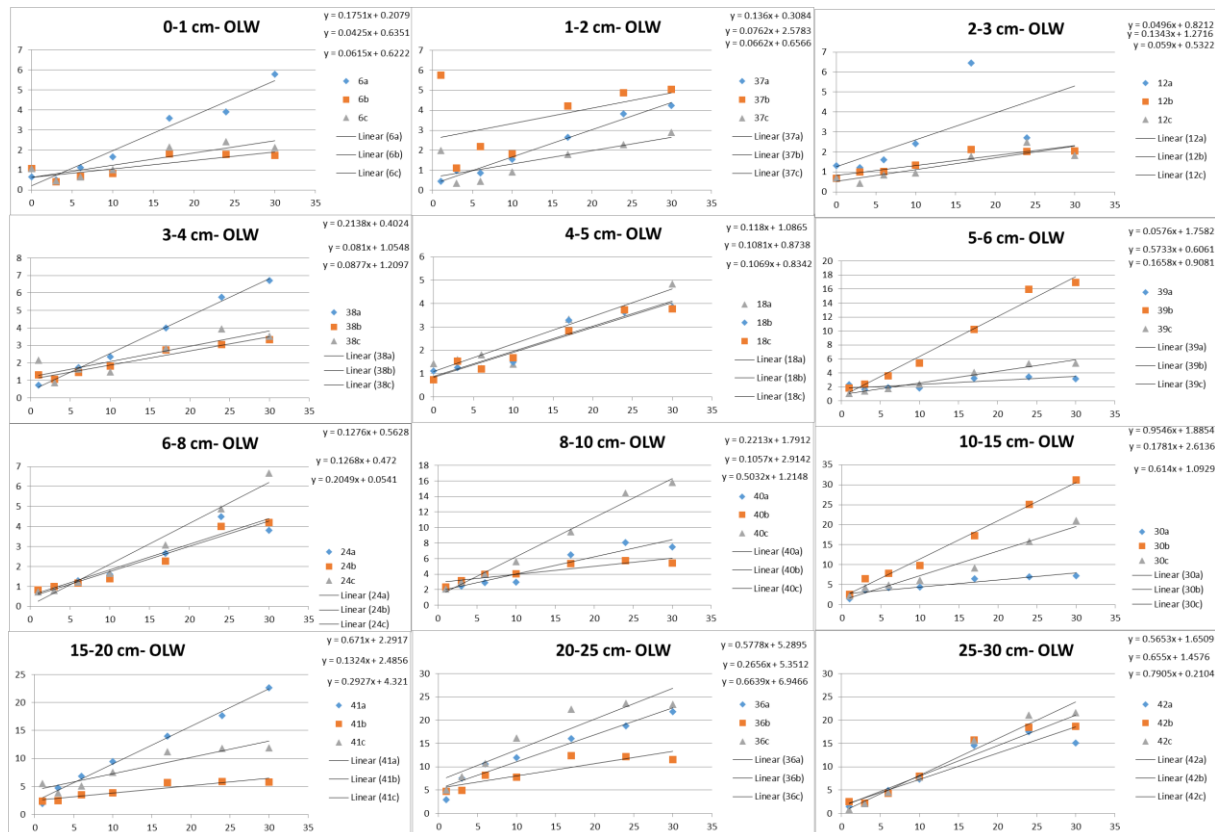
Figure S1: Development of sediment methane concentrations in *net methanogenesis* experiments at different depths in March 2013 (A), June 2013 (B), September 2013 (C), November 2013 (D), March 2014 (E), June 2014 (F), and September 2014 (G). Shown are measurements in triplicates (a, b, c) with trendline and slope for each replicate. Y-axis shows the methane concentration in μM , and x-axis shows the time in days.



16

17 **B**

18

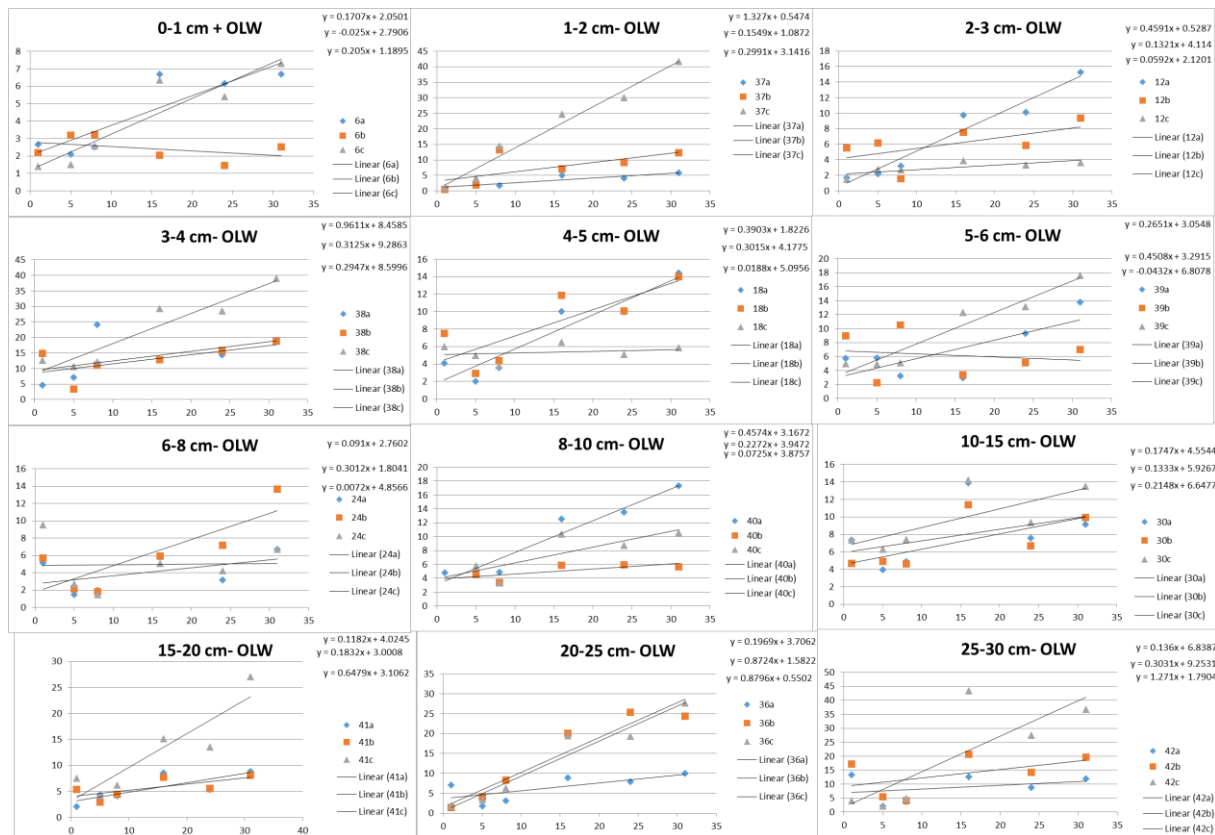
19 **C**

20

21

22

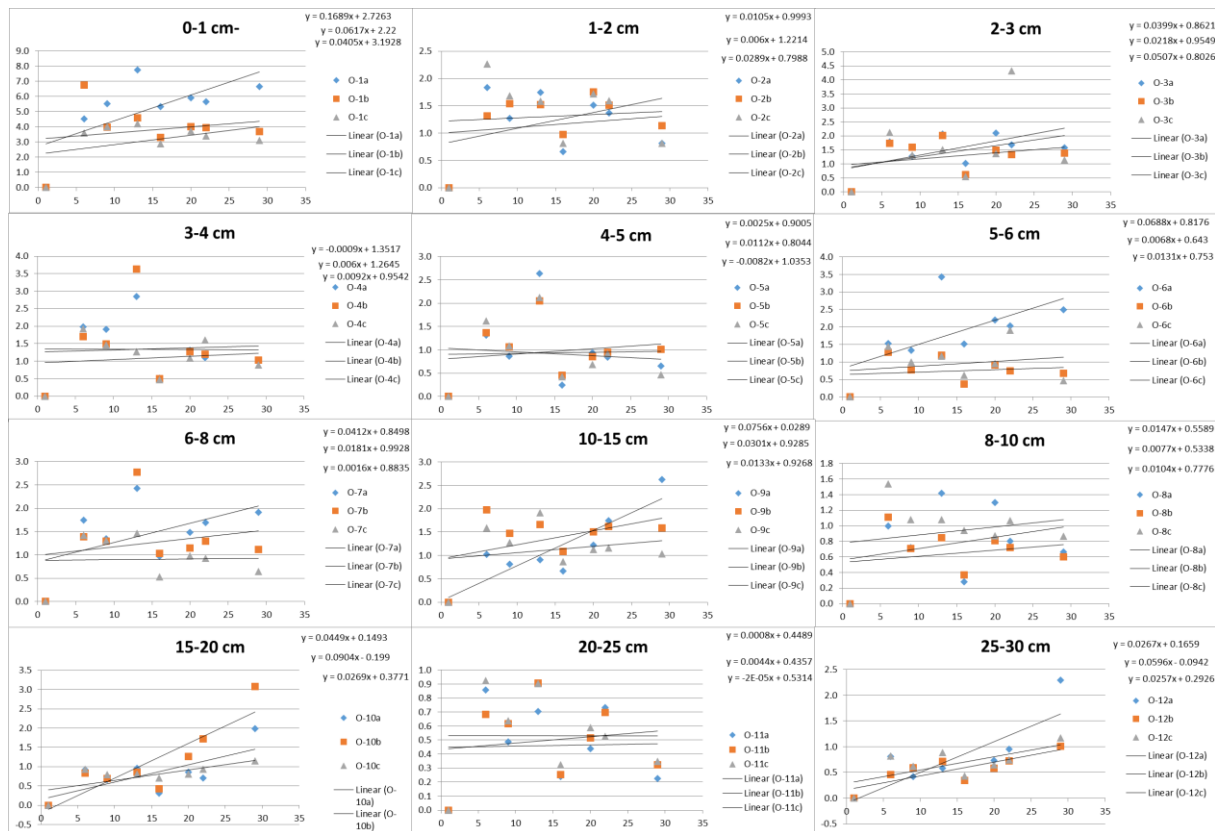
D



23

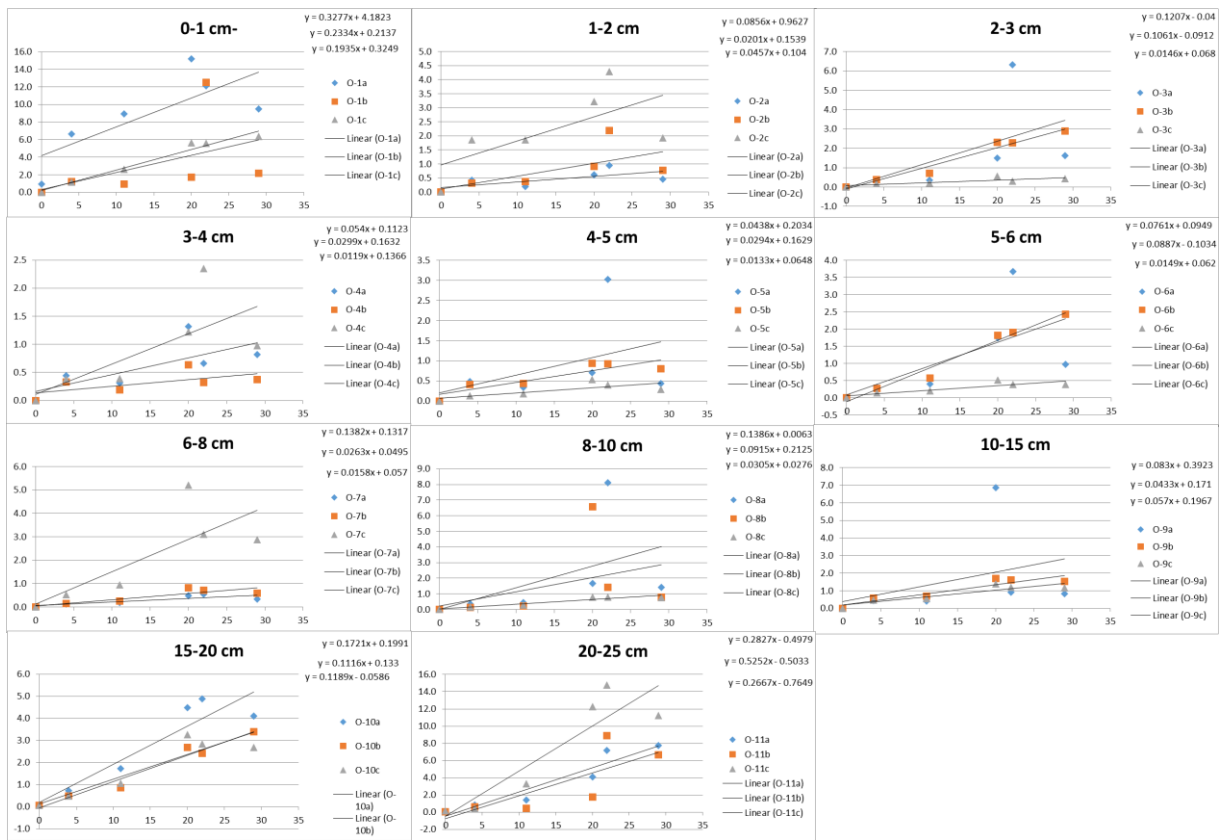
24

E

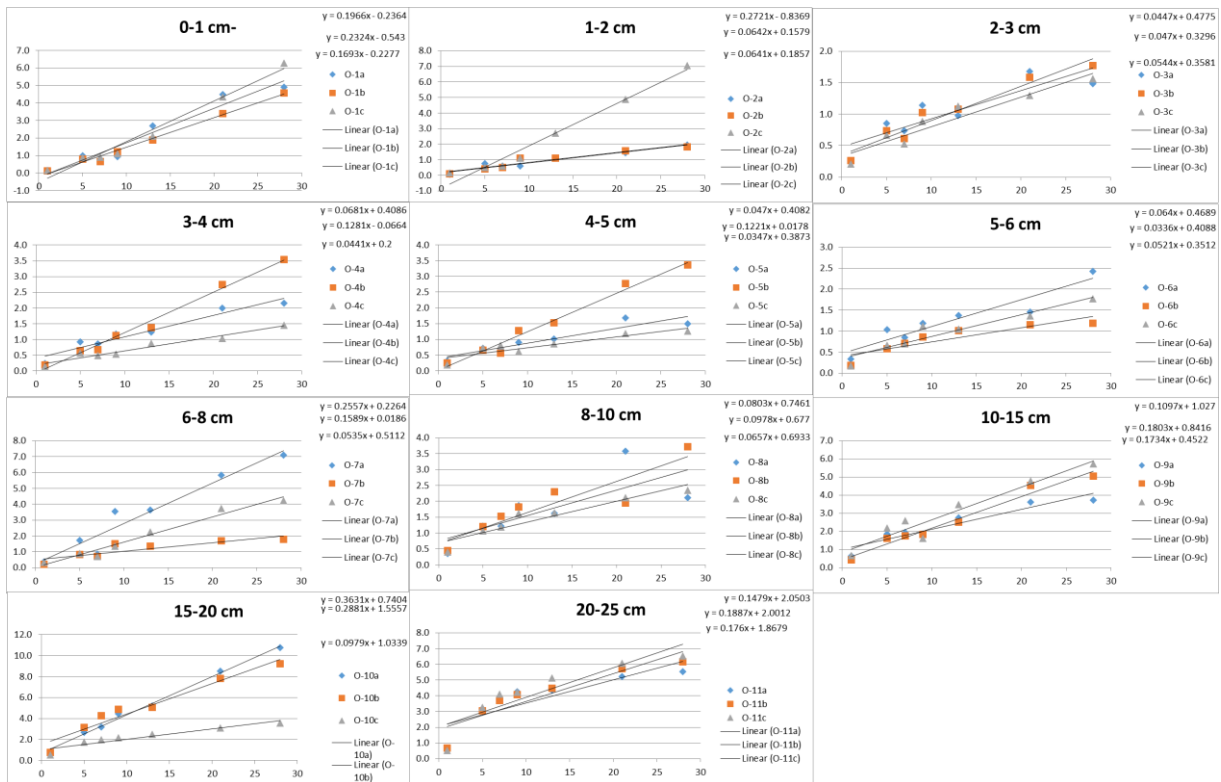


25

26

27 **F**

28

29 **G**

30

Figure S2: Example for the sediment methane increase in triplicates after addition of methanol (=methanol treatment) in March 2014. Methane showed a similar development at the other three time points November 2013, June 2014 and September 2014 (data not shown).

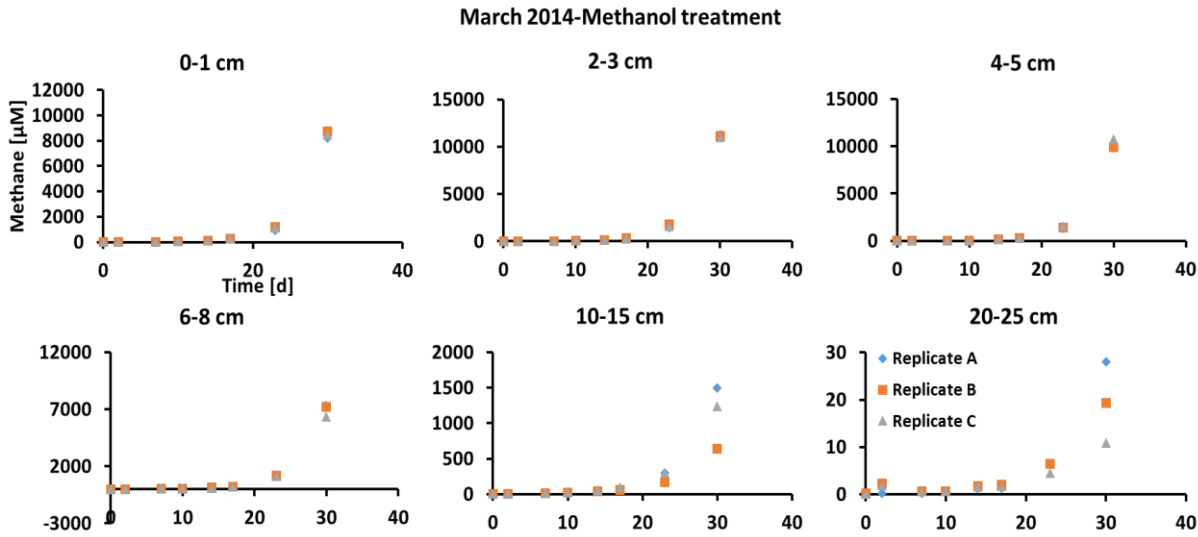


Figure S3: Dissolved oxygen (O_2) concentrations in the water column from February 2013 to September 2014. Data extracted from the Boknis Eck database: www.bokniseck.de/database.

