



Molecular characterization of organic matter mobilized from Bangladeshi aquifer sediment: tracking carbon compositional change during microbial utilization

Lara E. Pracht¹, Malak M. Tfaily², Robert J. Ardisson¹, and Rebecca B. Neumann¹

¹Department of Civil and Environmental Engineering, University of Washington, Seattle, 98195, USA

²Environmental Molecular Sciences Laboratory, Pacific Northwest National Laboratory, Richland, 99354, USA

Correspondence: Rebecca B. Neumann (rbneum@uw.edu)

Received: 29 June 2017 – Discussion started: 11 July 2017

Revised: 1 March 2018 – Accepted: 2 March 2018 – Published: 26 March 2018

Abstract. Bioavailable organic carbon in aquifer recharge waters and sediments can fuel microbial reactions with implications for groundwater quality. A previous incubation experiment showed that sedimentary organic carbon (SOC) mobilized off sandy sediment collected from an arsenic-contaminated and methanogenic aquifer in Bangladesh was bioavailable; it was transformed into methane. We used high-resolution mass spectrometry to molecularly characterize this mobilized SOC, reference its composition against dissolved organic carbon (DOC) in surface recharge water, track compositional changes during incubation, and advance understanding of microbial processing of organic carbon in anaerobic environments. Organic carbon mobilized off aquifer sediment was more diverse, proportionately larger, more aromatic, and more oxidized than DOC in surface recharge. Mobilized SOC was predominately composed of terrestrially derived organic matter and had characteristics signifying that it evaded microbial processing within the aquifer. Approximately 50 % of identified compounds in mobilized SOC and in DOC from surface recharge water contained sulfur. During incubation, after mobilized SOC was converted into methane, new organosulfur compounds with high S-to-C ratios and a high nominal oxidation state of carbon (NOSC) were detected. We reason that these detected compounds formed abiotically following microbial reduction of sulfate to sulfide, which could have occurred during incubation but was not directly measured or that they were microbially synthesized. Most notably, microbes transformed all carbon types during incubation, including those currently considered thermodynamically unviable for microbes to degrade in anaerobic conditions (i.e., those with a low NOSC).

In anaerobic environments, energy yields from redox reactions are small and the amount of energy required to remove electrons from highly reduced carbon substrates during oxidation decreases the thermodynamic favorability of degrading compounds with a low NOSC. While all compound types were eventually degraded during incubation, NOSC and compound size controlled the rates of carbon transformation. Large, more thermodynamically favorable compounds (e.g., aromatics with a high NOSC) were targeted first, while small, less thermodynamically favorable compounds (e.g., alkanes and olefinics with a low NOSC) were used last. These results indicate that in anaerobic conditions, microbial communities are capable of degrading and mineralizing all forms of organic matter, converting larger energy-rich compounds into smaller energy-poor compounds. However, in an open system, where fresh carbon is continually supplied, the slower degradation rate of reduced carbon compounds would enable this portion of the organic carbon pool to build up, explaining the apparent persistence of compounds with a low NOSC in anaerobic environments.

1 Introduction

Organic carbon can impact groundwater quality both positively and negatively by fueling microbial reactions that remove and contribute dissolved contaminants to groundwater (e.g., natural attenuation of nitrate, mobilization of geogenic arsenic, methane production). The organic carbon fueling these microbial reactions can come from the near-surface environment, transported into the aquifer with recharging water

(LeBlanc, 1984; Mailloux et al., 2013; Neumann et al., 2010) or can reside in the aquifer sediment, co-deposited when the aquifer formed (Korom, 1992; Parkin and Simpkins, 1995; Postma et al., 2007). Ultimately, the extent to which these sources of organic carbon can fuel subsurface reactions depends on their availability to the resident microbial community.

Historically, it was thought that molecular structure dictated carbon bioavailability (Lehmann and Kleber, 2015; Lutzow et al., 2006; Schmidt et al., 2011). Simple monomers were considered bioavailable, while more complex compounds, particularly those with aromatic rings, were considered molecularly recalcitrant. However, it is now understood that given the correct conditions, microbes can process all carbon types, continually transforming large, energy-rich organic compounds into smaller, energy-poor organic compounds (Lehmann and Kleber, 2015). In fact, compounds previously considered recalcitrant often have rapid turnover rates (Amelung et al., 2008).

The current view is that accessibility and microbial ecology control carbon bioavailability (Lehmann and Kleber, 2015; Schmidt et al., 2011). Physical protection mechanisms, such as organic carbon sorption to mineral surfaces and encapsulation into hydrophobic biopolymers or regions, can limit microbial access to carbon (Baldock and Skjemstad, 2000; Petridis et al., 2014), and energetic constraints, nutrient limitations, and metabolic capacities of microbial communities can affect the ability of microbes to process different chemical forms of organic carbon (Fontaine et al., 2007; LaRowe and Van Cappellen, 2011; Trulleyova and Rulík, 2004). Recent work has demonstrated that in anaerobic settings, the nominal oxidation state of carbon (NOSC) influences bioavailability. In a sulfate-reducing aquifer, compounds with a high NOSC were missing, while those with a low NOSC persisted (Boye et al., 2017). This outcome reflects the fact that organic carbon oxidation (i.e., removing electrons from carbon) requires energy (LaRowe and Van Cappellen, 2011), which must be offset by energy released from the reduction half-reaction. The amount of energy required to fully oxidize a carbon compound increases with the number of electrons. Thus, in anaerobic conditions, where the amount of energy released from reduction half-reactions is lower than that in oxic conditions, it is, paradoxically, more thermodynamically favorable to oxidize compounds with a high NOSC than compounds with a low NOSC (Keiluweit et al., 2016). It is these types of physical, energetic, and nutritional constraints on carbon bioavailability that help explain the presence of old organic carbon (i.e., thousands of years old) within soil and sediments and the contemporary processing of this organic carbon, particularly after perturbation events (Fontaine et al., 2007; Gurwick et al., 2008; Parkin and Simpkins, 1995).

Within aquifers, field studies have demonstrated that the reactivity of sedimentary organic carbon (SOC) decreases with increasing age (Chapelle et al., 2009; Jakobsen and

Postma, 1994; Postma et al., 2012). With contemporary understanding of the factors that control carbon bioavailability, this diminishment in reactivity can be attributed to the development of constraints limiting microbial processing of sedimentary organic carbon rather than to a complete absence of SOC. Results from an incubation experiment conducted with sediments collected from a methanogenic, alluvial aquifer in Munshiganj, Bangladesh, align with such an interpretation (Neumann et al., 2014). Sampling and homogenization of the aquifer sediments mobilized 0.33 ± 0.06 mg C of organic carbon per gram of sediment or $8.8 \pm 0.7\%$ of total SOC (Sect. S1 in the Supplement). During incubation, the mobilized SOC was rapidly converted into methane by the native microbial community (Neumann et al., 2014). The experiment demonstrated that the ~ 5000 year old, sandy aquifer sediments contain a notable amount of organic carbon that, if mobilized within the aquifer, could fuel microbial reactions.

In the Neumann et al. (2014) incubation experiment, SOC was mobilized during sampling and/or homogenization of the aquifer sediment. While this type of physical disturbance to the aquifer matrix could not occur in situ (i.e., within the aquifer), it is plausible that more realistic aquifer perturbations, such as geochemical changes brought about by large-scale groundwater pumping, could mobilize SOC in situ. For example, mineral-associated organic carbon can become mobilized into groundwater if solution pH increases (Gu et al., 1994; Jardine et al., 1989; Kaiser and Zech, 1999), if concentrations of ions that compete with organic carbon for sorption sites increase (Jardine et al., 1989; Kaiser and Zech, 1999), or if an influx of dissolved organic carbon fuels microbial reactions that target the mineral phase (e.g., reductive dissolution of iron oxide minerals) (Eusterhues et al., 2003; Fontaine et al., 2007; Mikutta et al., 2006).

At two different sites in Asia, there is published evidence that large-scale groundwater pumping has facilitated the mobilization of sedimentary organic carbon. At the site in Bangladesh where materials for the Neumann et al. (2014) incubation were collected, dry-season groundwater irrigation has pulled surface recharge water down to a 30 m depth where irrigation wells are screened (Harvey et al., 2006). Field measurements showed that dissolved organic carbon (DOC) concentrations in groundwater remained constant down to this depth but that DOC age increased (Harvey et al., 2002). This situation is only possible if SOC was released along the groundwater flow path as younger DOC was mineralized or sequestered into sediment (Neumann et al., 2010). In Vietnam, urban groundwater pumping for the city of Hanoi has pulled organic-rich river water into a Pleistocene-aged aquifer (van Geen et al., 2013). Along the recharge pathway, groundwater DOC concentrations peaked where microbial reduction reactions were occurring (i.e., iron reduction and arsenic mobilization), and mass balance calculations demonstrated that the river could not have supplied enough carbon to fuel these reactions. The data indicated that DOC in river water fueled microbial reactions that mobilized

SOC and that the mobilized SOC then fueled further reduction reactions.

Given the potential importance of SOC for fueling subsurface reactions, we sought to chemically characterize the carbon compounds mobilized off the aquifer sediment in the Neumann et al. (2014) incubation. While mobilization was an artifact of the experiment, it allowed us to study a pool of sedimentary organic carbon that was highly bioavailable after mobilization and would have otherwise been inaccessible. For characterization, we used Fourier transform ion cyclotron resonance mass spectrometry (FT-ICR-MS) coupled with electrospray ionization (ESI) in negative ion-mode. FT-ICR-MS is capable of characterizing the thousands of different compounds contained in natural organic carbon, though the technique is not quantitative because the ionization efficiency of compounds vary, making some compounds more difficult or impossible to identify (Sleighter and Hatcher, 2007). The technique has been applied to natural organic matter in a variety of environments (Chipman et al., 2010; Evert, 2015; Kim et al., 2006; Longnecker and Kujawinski, 2011; Spencer et al., 2014; Tfaily et al., 2013).

Through FT-ICR-MS analysis of the Neumann et al. (2014) experimental samples, we were not only able to chemically characterize SOC mobilized from the Bangladeshi aquifer sediments but were also able to compare the chemical composition of mobilized SOC to that of DOC in surface-water sources that recharge the aquifer and to track compositional changes in mobilized SOC as it was converted into methane by the native microbial community during incubation. These efforts generate knowledge about the chemistry of organic carbon within surface recharge waters and sediments of the Bangladeshi alluvial aquifer – the two possible sources of organic carbon for fueling subsurface microbial reactions – and advance understanding of microbial processing of organic carbon within anaerobic environments.

2 Material and methods

2.1 Incubation

FT-ICR-MS samples were collected from the Neumann et al. (2014) incubation experiment, which used aquifer sediment and aquifer recharge waters collected from a field site in Munshiganj, Bangladesh. The field site has been well characterized hydrologically and geochemically (Harvey et al., 2002, 2006; Swartz et al., 2004). The site is overlain by 3.5 m thick clay layer that, at deeper depths, remains saturated year round. This clay layer hosts rice fields and man-made ponds that serve as the two primary recharge sources for the upper aquifer (Harvey et al., 2006). The upper aquifer, in turn, supplies irrigation water for dry-season rice production (Fig. 1). This aquifer is ~5000 years old and contains Holocene deposits composed of gray-colored fine and silty sands be-

tween 3.5 and 12 m depths and grayish-green-colored fine to medium sands between 12 and 110 m depths (Swartz et al., 2004). The entire aquifer is anaerobic. Groundwater at the site is contaminated with arsenic and supersaturated with methane (Harvey et al., 2002).

Neumann et al. (2014) collected sediment for the incubation experiment from an aquifer depth of 9.1 m (Fig. 1), where groundwater arsenic and methane concentrations were relatively low ($\sim 6 \mu\text{g-As L}^{-1}$ and $\sim 5 \text{ mg CH}_4 \text{ L}^{-1}$, respectively). They homogenized the sediment and collected sediment porewater (i.e., water surrounding the aquifer sediment) by vacuum filtering ($0.2 \mu\text{m}$) multiple sediment aliquots. DOC concentrations in sediment porewater ranged between 856 and 1219 mg C L^{-1} (Neumann et al., 2014) (Table S1 in the Supplement), which was much higher than $\sim 4 \text{ mg C L}^{-1}$ DOC concentration measured in groundwater at the field site (Swartz et al., 2004). Neumann et al. (2014) concluded that organic carbon was mobilized off the sediment into porewater during sampling and/or homogenization of the sediment. In this paper, we refer to organic carbon dissolved in the Neumann et al. (2014) sediment porewater as “mobilized SOC”.

After homogenization, Neumann et al. (2014) dried and sterilized by gamma irradiation half of the sediment. They independently incubated both native and sterilized sediment for 200+ days with filtered ($0.45 \mu\text{m}$) aquifer recharge water that they had collected from a rice field and pond at the Munshiganj field site (8.2 g dry sediment to 10 mL of water). They collected the rice field recharge water from a shallow well installed within a rice field bund (i.e., the raised boundary surrounding a rice field), screened just below the surficial clay layer hosting the rice field (Fig. 1); rice field recharge is focused through bunds. They collected pond recharge water by driving a push point harpoon (M.H.E. products) 44 cm into the bottom sediments of a pond (Fig. 1). In this paper, we refer to DOC in the rice field and pond recharge waters as “recharge DOC”.

Neumann et al. (2014) destructively sampled incubation bottles 1, 17–20, 80–81, 91, 184, and 273 days after the initiation of the experiment (Neumann et al., 2014). They vacuum-filtered ($0.2 \mu\text{m}$) incubation water and analyzed it for dissolved organic carbon. They also analyzed headspaces from a few incubation bottles for methane. Previously published (Neumann et al., 2014) DOC and methane concentrations for all incubation replicates and time points are presented in Tables S2–S3. During the processing of the incubation bottles, aliquots ($100\text{--}200 \mu\text{L}$) of filtered water were saved and immediately frozen at -18°C . These frozen subsamples were later analyzed by FT-ICR-MS (see next section). Results from the FT-ICR-MS analysis are the focus of this paper.

Neumann et al. (2014) kept all water and sediment samples anoxic during collection, handling, and processing steps through the use of an anaerobic chamber, gas-impermeable bags, oxygen scavenging packets with oxygen indicator tabs, glass biological oxygen demand (BOD) bottles, and glass

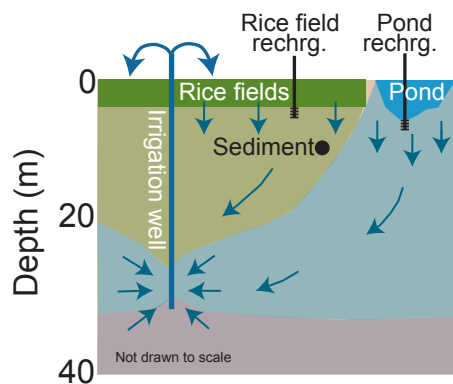


Figure 1. Conceptual cartoon indicating where Neumann et al. (2014) collected aquifer sediment (marked with black circle) and aquifer recharge water used in the incubation experiment. As described in the text, recharge water was collected from beneath a rice field and from the sediments of a pond. At the field site, water from rice fields and ponds is pulled into the aquifer to a depth of ~ 30 m where irrigation wells are screened. The cartoon is modified from Neumann et al. (2010).

serum vials sealed with butyl rubber stoppers. Further sampling details are available in the Neumann et al. (2014) paper.

2.2 FT-ICR-MS analysis

Two to three months after collection, frozen aliquots of water from the Neumann et al. (2014) incubation experiment were packed in dry ice for shipment to the Environmental Molecular Sciences Laboratory (EMSL) at Pacific Northwest National Laboratory in Richland, WA. At EMSL samples were diluted 1:2 (*v/v*) with liquid chromatography–mass spectrometry grade methanol (MeOH) less than 30 min before analysis to minimize esterification (McIntyre and McRae, 2005) and were injected directly into the instrument. Solid-phase extraction was not performed due to sample volume constraints. No salts were observed in the spectra. To avoid biases in ionization efficiency due to differences in DOC concentrations, the ion accumulation time (IAT) was optimized for each sample individually based on previously measured DOC concentrations (Tables S1 and S2). The IAT ranged between 1 and 1.5 s. All samples were run with instrument settings optimized by tuning on the Suwannee River fulvic acid (SRFA) standard.

A standard Bruker ESI source was used to generate negatively charged molecular ions. A negative ion mode was chosen due to its extensive use in characterizing a broad range of environmental DOC samples. Additionally, previous work has shown that organic matter is rich in carboxylic groups, as these groups ionize best in negative mode (Stenson et al., 2003). Recently, Ohno et al. (2016) have shown that for samples rich in condensed aromatic and aromatic molecules, the use of (+)ESI improves the ionization of aliphatic and carbohydrate like soil organic-matter (SOM) components. Be-

cause we did not complement (–)ESI with (+)ESI, our study may underestimate the presence of aliphatic and carbohydrate molecules.

Samples were introduced to the ESI source equipped with a fused silica tube (200 μm i.d) through a syringe pump at a flow rate of $3.0 \mu\text{L min}^{-1}$. Experimental conditions were as follows: needle voltage, +4.4 kV; Q1 set to 150 *m/z*; and the heated resistively coated glass capillary operated at 180 °C. Blanks (high-performance liquid-chromatography (HPLC) grade MeOH) were run at the beginning and end of the analysis to monitor potential carryover from one sample to another. A series of three free fatty acids with masses around 255, 283, and 325 Da were observed in the solvent blanks. These peaks did not show up when running the samples; analytes in the samples picked up the charges and had a higher intensity than the three fatty acids present in the MeOH. The instrument was flushed between samples with a mixture of water and methanol. The instrument was externally calibrated weekly with a tuning solution from Agilent, which calibrates to a mass accuracy of < 0.1 ppm and contains the following compounds: $\text{C}_2\text{F}_3\text{O}_2$, $\text{C}_6\text{HF}_9\text{N}_3\text{O}$, $\text{C}_{12}\text{HF}_{21}\text{N}_3\text{O}$, $\text{C}_{20}\text{H}_{18}\text{F}_{27}\text{N}_3\text{O}_8\text{P}_3$, and $\text{C}_{26}\text{H}_{18}\text{F}_{39}\text{N}_3\text{O}_8\text{P}_3$ with an *m/z* ranging between 112 to 1333 Da.

One hundred and forty-four individual scans were averaged for each sample and internally calibrated using organic-matter (OM) homologous series separated by 14 Da ($-\text{CH}_2$ groups). The mass measurement accuracy was 0.4 ppm on average and no larger than 1 ppm for singly charged ions across a broad *m/z* range (i.e., $200 < m/z < 1200$). Data analysis software (BrukerDaltonik version 4.2) was used to convert raw spectra to a list of *m/z* values applying a Fourier transform mass spectrometry (FTMS) peak picker with the *S/N* threshold set to 7 and absolute intensity threshold set to the default value of 100. Elemental formulas were assigned using in-house built software following the compound identification algorithm (CIA), described by Kujawinski and Behn (2006) and modified by Minor et al. (2012). Elemental formulas were assigned based on the following criteria: *S/N* > 7 and mass measurement error < 1 ppm, taking into consideration the presence of C, H, O, N, S, and P and excluding other elements. Formulas were allowed to have the following number of elements: C (1–100 atoms), H (1–200 atoms), O (1–30 atoms), N (0–20 atoms), S (0–10 atoms), and P (0–6 atoms). Additionally, each phosphorus atom required at least four oxygen atoms. CH_2 , H_2 , NH , and O were used for propagation. Since molecules containing both phosphorus and sulfur are rare, the elemental formula with the lowest error and the lowest number of heteroatoms was consistently chosen. All elemental formulas with errors above 1 ppm were rejected.

To further reduce cumulative errors, all sample peak lists within the entire dataset were aligned to each other prior to elemental formula assignment to eliminate possible mass shifts that would impact assignment. Peaks with large mass ratios (*m/z* values > 500 Da) often have multiple possible

elemental formulas. These peaks were assigned formulas through the detection of homologous series (CH₂, O, H₂, NH). Specifically, when the *m/z* of a homologous series group and the *m/z* of an already confidently assigned compound were summed to an *m/z* that was observed >500 Da, the elemental formula assigned to the smaller compound was appended by the atoms of the homologous series group and the new elemental formula was assigned to the larger compound. If no elemental formula matched an *m/z* value within the allowed error, the peak was not included in the list of elemental formulas. In total, 43 to 47% of mass spectra data were successfully assigned. Many peaks were left unassigned because they appeared to be organometal complexes (potentially arsenic) and metals were not included in the formula assignment (inclusion of metal is not straightforward and requires further validation). Overall, the percentage assignment was consistent for all of the samples and was considered at a good level given the samples were not concentrated or otherwise treated prior to analysis.

2.3 Data processing

Due to variation in ionization efficiency of different compounds, peak presence was used for the analysis of FT-ICR-MS data rather than peak intensity. Since low DOC concentrations can reduce ionization effectiveness, experimental replicates were combined during data processing, as were incubation samples with similar DOC concentrations collected in close temporal proximity to each other. Tables S1 and S2 indicate the number and DOC concentrations of samples combined together. Peaks present in any individual sample were considered present for the combined sample. Analysis focused only on combined samples, which included the rice field and pond recharge water, sediment porewater, and incubation water from day 1, days 17–20 (called day 18 throughout the paper), and days 80–91 (called day 85 throughout the paper). Combining replicates and samples with similar DOC concentrations improved the robustness of sample characterization and minimized artifactual variability when looking at compositional changes across incubation treatments and across incubation time.

Elemental formulas in combined samples were used to divide organic carbon into four distinct heteroatom groups: CHO, CHON, CHO plus P (any compound with P and without S), and CHO plus S (any compound with S). Elemental formulas were also used to calculate double-bond equivalent (DBE), NOSC, aromaticity index (AI), and compound classification. For an organic compound C_cH_hN_nO_oP_pS_s, DBE was calculated as (Koch and Dittmar, 2006, 2016)

$$\text{DBE} = 1 + 1/2(2c - h + n + p). \quad (1)$$

NOSC was calculated as (LaRowe and Van Cappellen, 2011)

$$\text{NOSC} = 4 - (4c + h - 3n - 2o + 5p - 2s)/c. \quad (2)$$

AI was calculated as (Koch and Dittmar, 2006, 2016)

$$\text{AI} = (1 + c - 0.5 \cdot o - s - 0.5 \cdot (n + p + h)) / (c - 0.5 \cdot o - s - n - p), \quad (3)$$

which identifies samples as alkanes (AI=0), olefinics (0 < AI ≤ 0.5), aromatics (AI > 0.5), or condensed aromatics (AI ≥ 0.67) (Koch and Dittmar, 2006, 2016; Willoughby et al., 2014). Compound class was assigned based on oxygen-to-carbon and hydrogen-to-carbon ratios (i.e., location within van Krevelen plots) (D'Andrilli et al., 2015; Kim et al., 2003). Table S4 includes the ratio ranges used to identify compounds that were lipid-, protein-, carbohydrate-, amino sugar-, lignin-, tannin-, and condensed-hydrocarbon-like. Compounds falling outside of these ranges were assigned as “other”.

Compound changes were tracked between days 1 and 18 and between days 18 and 85 of the incubation. Compounds identified at both time points were classified as “common”, those identified at the first time point but not at the second were classified as “lost”, and those identified at the second time point but not at the first were classified as “newly detected”.

3 Results and discussion

3.1 Composition of DOC in aquifer recharge waters versus mobilized SOC

Microbial reactions within aquifers are fueled either by sedimentary organic carbon or by dissolved organic carbon transported from the surface into the aquifer with recharging water. Here we compare the chemical composition of these two sources of organic carbon for the Bangladeshi aquifer. As previously mentioned, ESI FT-ICR-MS is not quantitative because the ionization efficiency of the different organic compounds varies widely during ESI. Thus, comparisons involve only those compounds detected by the instrument and not the full composition of each sample. However, all samples were treated the same and each sample was normalized by the total number of detected peaks, making such comparisons more robust.

The chemical composition of DOC in the pond and rice field recharge waters collected for the Neumann et al. (2014) incubation experiment was highly similar (Fig. 2, Table 1). Notable differences between DOC in the two recharge waters only existed in the H-to-C ratio distribution. Pond recharge contained proportionately fewer compounds with H-to-C ratios < 0.75 and proportionately more compounds with H-to-C ratios > 1.25 compared to rice field recharge (Fig. 2b). However, these ratio differences did not result in markedly different compound classifications (Fig. 2h, Table 1).

In contrast, the character of organic carbon mobilized off aquifer sediment into sediment porewater during sampling

Table 1. Chemical character of initial waters used in Neumann et al. (2014) incubation.* The italic numbers represent the median, and the non-italicized numbers represent the mean.

	Pond recharge	Rice field recharge	Sediment porewater
% CHO	26.7	22.0	9.6
% CHON	9.9	7.3	17.6
% CHO+P	16.0	11.8	21.3
% CHO+S	47.3	58.9	51.4
H-to-C ratio; <i>median</i> , mean	<i>1.33</i> , 1.238	<i>1.18</i> , 1.100	<i>0.92</i> , 1.019
(SD)	(0.558)	(0.614)	(0.528)
O-to-C ratio; <i>median</i> , mean	<i>0.286</i> , 0.354	<i>0.333</i> , 0.404	<i>0.375</i> , 0.435
(SD)	(0.279)	(0.301)	(0.299)
DBE; <i>median</i> , mean	<i>7.5</i> , 8.4	<i>8.0</i> , 8.7	<i>13.0</i> , 13.3
(SD)	(5.0)	(5.0)	(7.1)
NOSC; <i>median</i> , mean	<i>-0.56</i> , -0.23	<i>-0.32</i> , 0.14	<i>0.10</i> , 0.07
(SD)	(1.33)	(1.56)	(0.86)
Peak mass (Da); <i>median</i> , mean	<i>341.1</i> , 379.6	<i>352.9</i> , 391.3	<i>437.0</i> , 454.6
(SD)	(155.6)	(162.4)	(134.5)
% Compounds > 600 Da	6	8	14
Aromaticity index			
% Alkane	30.9	28.6	26.5
% Olefinic	43.7	35.3	28.6
% Aromatic	6.5	6.6	15.5
% Condensed aromatic	19.0	29.6	29.5
Compound classification			
% lipid-like	14.6	14.5	3.9
% protein-like	15.4	12.1	5.8
% amino-sugar-like	1.8	3.0	3.2
% cellulose-like	3.8	2.2	4.3
% lignin-like	18.3	17.1	16.9
% tannin-like	1.9	2.1	7.4
% condensed-hydrocarbon-like	24.1	25.7	38.0
% other	20.0	23.3	20.4
% terrestrially derived (cellulose, lignin, tannin-like)	24.0	21.4	28.6
% microbially derived (lipid, protein, amino-sugar-like)	31.8	29.6	12.9

* Percentages reflect only those compounds detected by the FT-ICR-MS analysis method.

and homogenization of the sediment was distinctly different than DOC in the two recharge waters. Sediment porewater, which was shown by Neumann et al. (2014) to have a higher dissolved organic carbon concentration than recharge waters ($1059 \pm 186 \text{ mg C L}^{-1}$ vs. $17 \pm 7 \text{ mg C L}^{-1}$ in rice field recharge water and $30 \pm 3 \text{ mg C L}^{-1}$ in pond recharge water), also had a higher total number of assigned formulas (5263 vs. 627 in rice field recharge water and 835 in pond recharge water). The number of detected compounds provides insight into the complexity of the samples (Sleighter and Hatcher, 2008). These numbers indicate that mobilized SOC was more complex than DOC in surface recharge water. A recent study using FT-ICR-MS to probe the character of organic carbon in intact soil cores found that soluble carbon in the smaller,

less physically accessible soil pores was more complex than soluble carbon in the larger, more physically accessible soil pores (Bailey et al., 2017). In this study and in our study, the more complex carbon pool was the one that, due to in situ constraints (physical, nutritional, and/or energetic), evaded microbial decomposition.

The chemical character of the mobilized SOC and its compositional difference from DOC in recharge water also signify that it avoided microbial processing within the aquifer. The mass distribution for mobilized SOC was wider and skewed toward larger masses relative to DOC in recharge water (Fig. 2d). The wider distribution aligns with the larger number and, thus, greater diversity of compounds detected in mobilized SOC relative to DOC in recharge. The skew

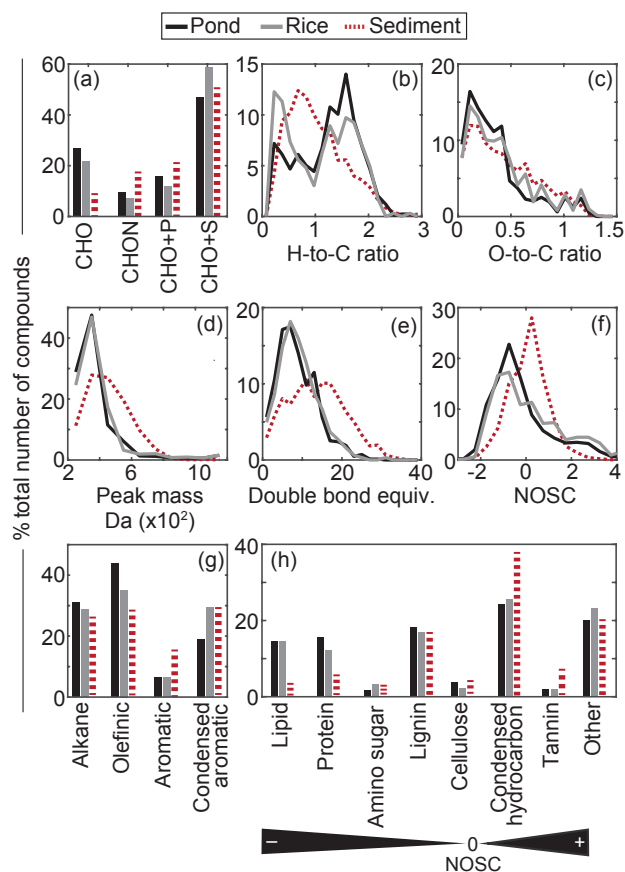


Figure 2. Chemical characteristics of mobilized SOC and of DOC in pond and rice field recharge water. (a) Percent of identified compounds in heteroatom groups. Proportional distributions of (b) H-to-C ratios, (c) O-to-C ratios, (d) peak mass, (e) double-bond equivalents, and (f) nominal oxidation states of carbon. Percent of identified compounds in groupings based on (g) aromaticity index (alkanes, AI=0; olefinics, $0 < \text{AI} \leq 0.5$; aromatics, $\text{AI} > 0.5$; condensed aromatics, $\text{AI} \geq 0.67$) and (h) compound classifications (Table S4). Compound classifications are arranged in increasing order based on NOSC, as obtained from Boye et al. (2017).

toward larger masses supports the idea that mobilized SOC was protected from in situ decomposition. Microbial communities continually transform large compounds into smaller compounds, and the breakdown of large macromolecules is the first step. During the Neumann et al. (2014) incubation, large compounds were lost first, while small compounds persisted (see Sect. 3.2 and 3.3). Additionally, the dimensions of bacterial porin structures can lead to the exclusion of large organic solutes (e.g., >600 Da), requiring extracellular enzymes (exoenzymes) to breakdown these larger molecules before they can be assimilated by microbial cells (Benz and Bauer, 1988; Nikaido and Vaara, 1985; Weiss et al., 1991). Relative to DOC in recharge water, mobilized SOC contained proportionately more compounds that were larger than

600 Da (Table 1), implying that these compounds had not yet been attacked by exoenzymes.

Compositionally, mobilized SOC was more aromatic than recharge DOC. Similar to the mass distribution, the DBE distribution for mobilized SOC was wider and skewed toward higher numbers relative to DOC in recharge (Fig. 2e), signifying that SOC was composed of a wider diversity of compounds, including those with more double bonds and rings. Based on the AI, aromatic compounds accounted for the larger DBE. Mobilized SOC had proportionately fewer olefinic compounds (i.e., those with double bonds) but more aromatic compounds than DOC in recharge water (Fig. 2g, Table 1). According to compound classifications, these aromatic compounds were tannin- and condensed-hydrocarbon-like (Fig. 2h, Table 1). Mobilized SOC also had a smaller proportion of compounds classified as protein- and lipid-like (Fig. 2h, Table 1). These differences in compound classification imply that relative to DOC in recharge, mobilized SOC was composed of proportionately more terrestrially derived organic matter (i.e., cellulose, lignin, and tannin-like compounds; $\sim 29\%$ vs. $\sim 22\%$ in recharge), more highly condensed organic matter (i.e., coal-, soot-, charcoal-, and black-carbon-like compounds; $\sim 38\%$ versus $\sim 25\%$ in recharge), and notably less microbially derived organic matter (i.e., lipid-, protein-, amino-sugar-like compounds; $\sim 13\%$ versus $\sim 30\%$ in recharge). The remaining proportion of compounds did not overlap with a known class.

The detected composition of the mobilized SOC signifies that it was predominately composed of terrestrial organic matter that had not yet been processed by microbes and that to some extent had experienced combustion or photochemical reactions (i.e., the highly condensed fraction) (Chen et al., 2014). Similarly, Bailey et al. (2017) found that soluble carbon in smaller, less accessible soil pores had proportionately more lignin-, tannin-, and condensed-hydrocarbon-like compounds and proportionately fewer lipid-like compounds than soluble carbon in larger, more accessible soil pores. Traditionally, lignins, tannins, and condensed hydrocarbons were considered molecularly recalcitrant (Lehmann and Kleber, 2015; Lutzow et al., 2006; Schmidt et al., 2011), and thus their presence was historically interpreted as resulting from negative enrichment (i.e., microbes preferentially decomposing other compounds). However, in both the Bailey et al. (2017) study and in the Neumann et al. (2014) incubation (see Sect. 3.3), these terrestrially derived and highly condensed organic compounds were readily degraded. Thus, the presence of these compounds indicates instead that they were protected from in situ microbial attack, an interpretation that aligns with contemporary understanding that physical and ecological factors control carbon bioavailability rather than molecular structure.

Of all the compound classes presented in Fig. 2h, tannin- and condensed-hydrocarbon-like compounds have the highest NOSC, while lipid- and protein-like compounds have the lowest NOSC (Boye et al., 2017; Keiluweit et al., 2016). The

relative enrichment of tannin- and condensed-hydrocarbon-like compounds and the depletion of lipid- and protein-like compounds in mobilized SOC (Fig. 2h) explains the positive skew of the NOSC distribution for mobilized SOC relative to recharge DOC (Fig. 2f). The median NOSC value for mobilized SOC was +0.10, while the median value for DOC in pond and rice field recharge was -0.56 and -0.32 , respectively (Table 1). Not surprisingly, Bailey et al. (2017) similarly found that soluble carbon from the smaller, less accessible soil pores had a higher NOSC than soluble carbon from the larger, more accessible soil pores, though the difference was not statistically significant. In the anaerobic conditions of the Bangladeshi aquifer, where highly energetic electron acceptors like oxygen and nitrate are absent (Swartz et al., 2004), it is more thermodynamically favorable to oxidize compounds with a high NOSC (Keiluweit et al., 2016; LaRowe and Van Cappellen, 2011). Thus, the presence of these more oxidized, thermodynamically favorable carbon compounds within mobilized SOC further supports the idea that this carbon pool evaded microbial processing within the aquifer.

Notably, in mobilized SOC and in recharge DOC, roughly half of all identified molecules had sulfur heteroatoms (47% in pond recharge, 59% in rice field recharge, and 51% in SOC) (Fig. 2a; Table 1). Organosulfur compounds form in organic, sulfate-reducing environments where reduced sulfide species can react with various types of organic matter (Heitmann and Blodau, 2006; Perlinger et al., 2002; Schouten et al., 1993). As such, organosulfur compounds have been detected in various anaerobic environments (Brown, 1986; Urban et al., 1999). In an aquifer system in Rifle, CO, sulfur heteroatom abundance increased as DOC was sampled from more chemically reduced zones (Evert, 2015). Sediment and water samples obtained for the Neumann et al. (2014) incubation study similarly came from chemically reduced environments. Groundwater at the depth from which the sediment was collected contained $\sim 7 \text{ mg S L}^{-1}$ as sulfate and 64 mg S L^{-1} as sulfide (Swartz et al., 2004). Sulfurization of organic matter is an abiotic process that occurs early in sediment diagenesis at ambient temperatures and pressures (Kohnen et al., 1991; Schouten et al., 1993). However, biologically mediated reactions can also involve organosulfur compounds (Brosnan and Brosnan, 2006; Madigan et al., 2003; Thauer, 1998). In the later incubation period, new organosulfur compounds were detected in biotic incubations but not in abiotic incubations, indicating that microbes either generated sulfide (via dissimilatory sulfate reduction) that abiotically reacted with dissolved organic matter (DOM) during this time period or they directly synthesized organosulfur compounds (see Sect. 3.3).

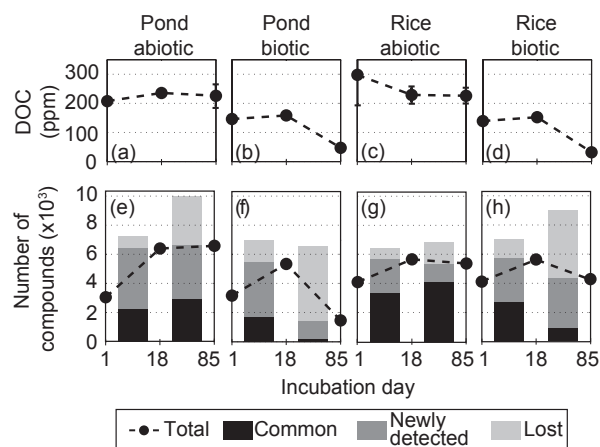


Figure 3. (a–d) Average concentrations of DOC and (e–h) number of organic compounds in incubation water 1, 18, and 85 days after the initiation of the incubation experiment. In panels (a–d) error bars represent the standard deviation around the mean (Table S2). In panels (e–h), black circles indicate the total number of compounds present at a given time point. Bars between time points indicate the number of compounds that were identified at both time points, i.e., common (black), identified at the second time point but not at the first, i.e., newly detected (dark gray), and identified at the first time point but not at the second, i.e., lost (light gray).

3.2 Carbon transformations between days 1 and 18 of incubation

At the onset of the incubation experiment, 1 day after recharge waters were mixed with aquifer sediment, DOC concentration and composition were dominated by sediment porewater. Average DOC concentrations were 140–300 mg C L^{-1} (Fig. 3a–d; Table S2), which Neumann et al. (2014) showed were explained by the dilution of mobilized SOC in sediment porewater ($1059 \pm 186 \text{ mg C L}^{-1}$) with recharge water (17 ± 7 and $30 \pm 3 \text{ mg C L}^{-1}$ in rice field and pond recharge, respectively). Characterization by FT-ICR-MS showed that DOC in these initial incubation samples was more similar to mobilized SOC in sediment porewater than to DOC in aquifer recharge water (Fig. S1 in the Supplement). Both mass balance and chemical characterization indicate that the primary source of soluble organic carbon in the incubation experiment was that mobilized from the aquifer sediment.

Between days 1 and 18, average DOC concentrations increased by 13 ± 5 to $28 \pm 16 \text{ mg C L}^{-1}$ in incubations conducted with pond recharge (Fig. 3a and b; Table S2) and average DOC concentrations did not noticeably change in incubations conducted with rice field recharge, after accounting for variability between replicates (Fig. 3c and d; Table S2). During this time period, the number of compounds identified by FT-ICR-MS increased in all treatments. In the two pond incubations ~ 4000 new compounds were detected (Fig. 3e and f), and in the two rice field incubations ~ 2000 new com-

pounds were detected (Fig. 3g and h). Across all four treatments, the compositional character of newly detected compounds on incubation day 18 matched that of DOC in initial incubation water (i.e., from day 1), which, in turn, was similar to SOC mobilized into sediment porewater (Fig. S2). This correspondence can be explained by abiotic desorption of SOC from aquifer sediment into incubation water between days 1 and 18 of the incubation, with newly detected compounds representing those desorbed from aquifer sediment. In support of abiotic desorption, during this time period there was a proportionately greater detection of large compounds (Fig. 4; Figs. S3 and S4), which can be explained by slower diffusive partitioning rates for larger compounds. If this interpretation is correct, then increases in DOC concentrations between days 1 and 18 of the incubation can be attributed to desorption of SOC.

Fewer compounds were lost between days 1 and 18 than were newly detected, and the type of recharge water used in incubation had no impact on the number of lost compounds (Fig. 3e–h). Instead, the use of sterilized versus native sediment controlled compound loss. Treatments with native sediment lost ~1500 compounds (Fig. 3f and h), while treatments with sterilized sediment lost ~800 compounds (Fig. 3e and g). A greater loss of compounds in incubation sets conducted with native sediment indicates that the microbial transformation of organic carbon occurred during this early incubation period. Figures 4 and S3 show that compounds in the CHO heteroatom group with high O-to-C ratios and high NOSC were lost in proportionately greater numbers in biotic than in abiotic incubations. These compounds had lower H-to-C ratios, were predominately smaller than 600 Da, and were identified as aromatic.

The preferential loss of aromatic compounds observed in the biotic anaerobic incubation (Fig. 4) contrasts with that typically observed in aerobic incubations. In aerobic conditions, microbes do not initially target aromatic compounds. While aromatic compounds are eventually oxidized, in the initial phases of aerobic degradation, they are actually selectively preserved (Lutzow et al., 2006; Schmidt et al., 2011). In both aerobic and anaerobic conditions, the rate of carbon oxidation depends both on the thermodynamic driving force driving the reaction (i.e., the net difference between energy gained from the reaction and energy needed to synthesize ATP) and on the ability of microbial communities to acquire and process reactants (Jin and Bethke, 2003). When oxygen is the electron acceptor, the thermodynamic driving force of carbon oxidation does not depend on NOSC (Keiluweit et al., 2016). Thus, no carbon form is more or less energetically favorable to oxidize. Instead, non-thermodynamic factors, such as enzyme kinetics, influence the rate of microbial utilization. In contrast, with anaerobic electron acceptors, the thermodynamic driving force rapidly drops as NOSC decreases (Keiluweit et al., 2016). Thus, in anaerobic environments, compounds with a high NOSC represent the most energetically favorable compounds to oxidize. These energy dynam-

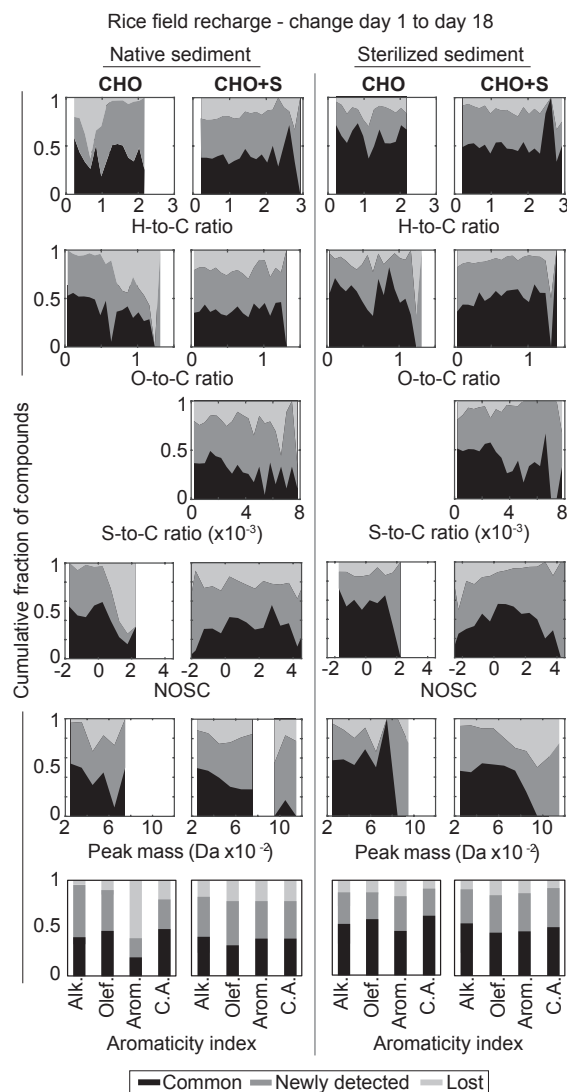


Figure 4. Relative change in chemical indices between days 1 and 18 for rice field recharge water incubated with native sediment (left two columns) and sterilized sediment (right two columns). Plotted are the cumulative fractions of compounds that were identified at both time points, i.e., common (black), identified at the second time point but not at the first, i.e., newly detected (dark gray), and identified at the first time point but not at the second, i.e., lost (light gray). Compounds were separated by heteroatom group (CHO and CHO+S groups are shown) and characterized based on H-to-C ratio, O-to-C ratio, S-to-C ratio, NOSC, peak mass, and aromaticity index.

ics explain why aromatic compounds with a high NOSC and high O-to-C ratios were initially targeted in the anaerobic incubations. Additionally, the <600 Da size means these compounds had a high likelihood of being directly assimilated by microbes (Benz and Bauer, 1988; Nikaïdo and Vaara, 1985; Weiss et al., 1991).

3.3 Carbon transformations between days 18 and 85 of incubation

Between days 18 and 85, DOC was lost from incubations conducted with native sediment (Fig. 3b and d) but not from those conducted with sterilized sediment (Fig. 3a and c). Carbon mass balance calculations conducted by Neumann et al. (2014) indicated that DOC lost in the biotic incubations was transformed into methane. Accordingly, the number of identified compounds by FT-ICR-MS decreased in both of the biotic incubations (Fig. 3f and h) but did not change in the abiotic incubations (Fig. 3e and g). However, there was not a direct relationship between DOC concentration and number of compounds; both biotic incubations lost similar amounts of DOC by day 85 (Fig. 3b and d; Table S2), but the decrease in the number of compounds was larger in incubations conducted with pond recharge than in those conducted with rice field recharge (Fig. 3f and h).

All compound types were microbially transformed, as evidenced by proportionally greater compound changes in biotic than in abiotic incubations between days 18 and 85 of the incubation, regardless of chemical index (Fig. 5 and Fig. S5). Compounds traditionally considered molecularly recalcitrant (e.g., aromatics and condensed aromatics) were almost fully transformed in the biotic incubations, reinforcing current understanding that microbial communities can decompose a wide range of carbon types (Lehmann and Kleber, 2015; Schmidt et al., 2011). Additionally, compounds with a low NOSC were lost from the biotic incubations (Figs. 5 and S5). The loss of compounds with a low NOSC in an anaerobic incubation conflicts with the recently presented idea that microbial degradation of these compound types is thermodynamically unviable in anaerobic environments (Boye et al., 2017; Keiluweit et al., 2016). The argument assumes that the thermodynamic driving force (i.e., net difference between energy gained from the reaction and energy needed to synthesize ATP) for oxidation of highly reduced carbon substrates approaches zero as less energetically rich, anaerobic electron acceptors are used in the redox reaction (Boye et al., 2017; Keiluweit et al., 2016). Boye et al. (2017) predicted that, in sulfidic conditions, compounds with NOSC below -0.3 are energetically unviable for respiring microbes. However, in the highly reducing environment of the incubation, where methanogenesis occurred, compounds with NOSC values as low as -2 were lost between incubation days 18 and 85 (Figs. 5 and S5). This result indicates that microbial processing of these highly reduced compounds was not thermodynamically inhibited in the incubation despite the low energy yield associated with methanogenesis.

While all compound types were microbially transformed (i.e., were lost in greater proportion in the biotic than abiotic incubations), some compound types within the biotic incubations persisted between days 18 and 85 (i.e., were common to both time points). Compound persistence was proportionately greater in the rice field incubation than in the

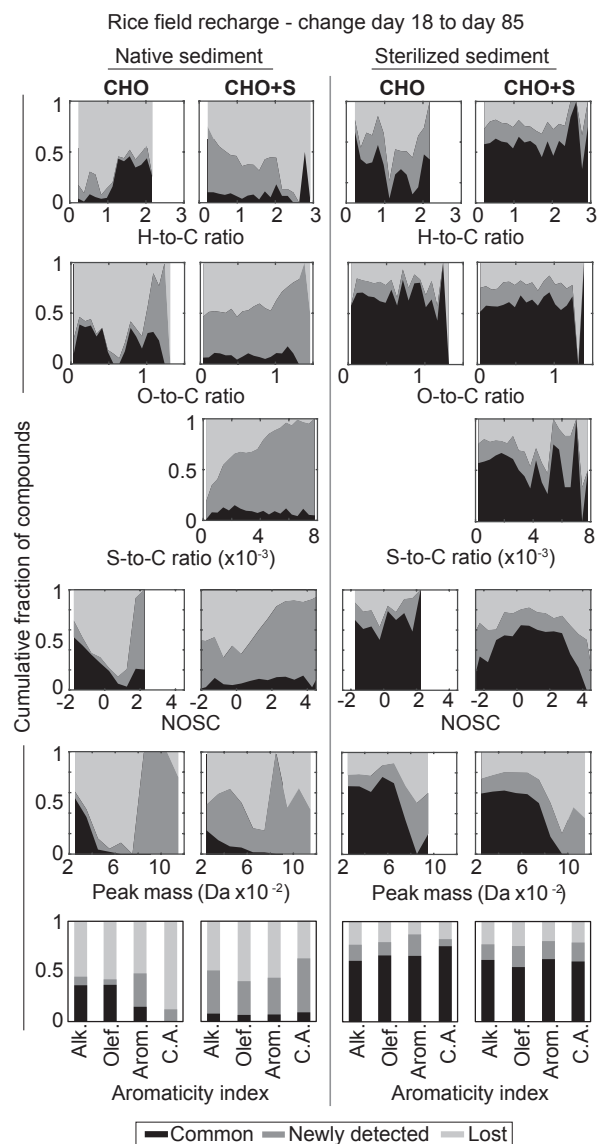


Figure 5. Relative change in chemical indices between days 18 and 85 for rice field recharge water incubated with native sediment (left two columns) and sterilized sediment (right two columns). Plotted are the cumulative fractions of compounds that were identified at both time points, i.e., common (black), identified at the second time point but not at the first, i.e., newly detected (dark gray), and identified at the first time point but not at the second, i.e., lost (light gray). Compounds were separated by heteroatom group (CHO and CHO+S groups are shown) and characterized based on H-to-C ratio, O-to-C ratio, S-to-C ratio, NOSC, peak mass, and aromaticity index.

pond incubation (Fig. 5; Figs. S5 and S6). Our interpretation is that persistent compounds were not necessarily biologically inaccessible but rather they were more slowly processed or were regenerated during the degradation of larger compounds. One set of persistent compounds were those in the

CHO heteroatom group with high H-to-C ratios, low NOSC, and small size (Fig. 5; Figs. S5 and S6). They were indexed as alkanes and olefinics. The persistence of CHO compounds with a low NOSC directly contrasts with the proportionately greater loss of CHO compounds with a high NOSC in the early incubation phase (Figs. 4 and S3). While NOSC did not control thermodynamic viability in the incubation, it did affect relative rates of compound transformation, with a higher NOSC facilitating faster transformation but only for CHO compounds. In other heteroatom groups, NOSC was not related to persistence (Figs. 5 and S5). Instead, compound size predicted persistence, with the smallest compounds persisting in all groups (Fig. 5; Figs. S5 and S6). While historically it was thought that larger, humified compounds resisted degradation, the persistence of smaller compounds supports emerging understanding that organic carbon in the environment is continuously processed from larger to smaller molecular size (Lehmann and Kleber, 2015).

In contrast to the persistence of smaller compounds, large compounds were lost and newly detected in both biotic and abiotic treatments in proportionately higher numbers than smaller compounds between days 18 and 85 (Fig. 5; Figs. S5 and S6). These compound changes could reflect continued abiotic partitioning of large molecules between sediment and water, or, if the abiotic incubations did not stay completely sterile, it could reflect microbial processing of large compounds. However, if microbial processing occurred in the incubation conducted with sterilized sediment, it was slower than in biotic incubations and it did not alter DOC concentrations (Fig. 3a and c).

A notable difference between incubations conducted with native and sterilized sediment was the detection of new compounds in the CHO+S heteroatom group between days 18 and 85 in native-sediment incubations (Figs. 5 and S5). The new CHO+S compounds had low H-to-C ratios, high S-to-C ratios, and high NOSC. They had a range of O-to-C ratios and spanned all aromaticity indices. Other studies have directly connected the presence of organosulfur species with microbial activity (D'Andrilli et al., 2013; Gonsior et al., 2011). We reason that these detected compounds either formed due to microbial sulfate reduction and sulfide generation during this period, which was not directly measured, followed by abiotic sulfurization of organic matter, or they were microbially synthesized. Both pathways are plausible. Sulfurization of organic matter is well documented (Brown, 1986; Heitmann and Blodau, 2006; Kohnen et al., 1991; Urban et al., 1999), and microbes can synthesize a wide array of organic sulfur compounds (Brosnan and Brosnan, 2006; Madigan et al., 2003; Thauer, 1998).

4 Conclusions

4.1 Sedimentary organic carbon

Collectively, FT-ICR-MS characterization of SOC mobilized off the aquifer sediment in the Neumann et al. (2014) incubation indicates that it was a highly diverse and energetically favorable pool of organic carbon, predominately composed of terrestrial organic matter not yet processed by microbes (Fig. 2). Similarities in the compositional character between this pool of SOC and soluble carbon from smaller, less physically accessible pores in an intact soil core study (Bailey et al., 2017) imply that when organic carbon evades microbial attack, it remains highly diverse and composed of more oxidized, aromatic compounds (e.g., tannins and condensed hydrocarbons) relative to carbon that is readily accessible to microbial processing (e.g. DOC in recharge water or soluble carbon in larger soil pores).

Roughly half of the identified compounds in mobilized SOC (and in recharge DOC) contained sulfur (Fig. 2). During incubation, after mobilized SOC was transformed into methane, new sulfur-containing compounds were detected in biotic incubations that had high S-to-C ratios and high NOSC values (Figs. 5 and S5). These compounds were not detected in abiotic incubations. We reason that they either represent sulfurization of organic matter following microbial sulfate reduction or were directly synthesized by the native microbial community.

As discussed in the Introduction, in the Neumann et al. (2014) experiment, SOC was initially mobilized due to sampling, homogenizing, and/or handling of the sandy aquifer sediment. While such physical perturbations to the subsurface would not occur in situ, geochemical perturbations to aquifers can and do occur, and geochemical perturbations hold potential to mobilize organic carbon off sediment into groundwater. For example, changes to pH or ion concentrations could desorb organic carbon, while reductive dissolution of carbon containing oxide minerals could release organic carbon into groundwater (Eusterhues et al., 2003; Fontaine et al., 2007; Gu et al., 1994; Jardine et al., 1989; Kaiser and Zech, 1999; Mikutta et al., 2006). FT-ICR-MS and DOC concentration data (Figs. 3–4 and S2–S3) signify that SOC was abiotically released from aquifer sediment during incubation. Release reflected desorption during equilibration of organic carbon between dissolved and sorbed phases. If it were to become mobilized within the anaerobic Bangladeshi aquifer, the characterized pool of SOC would represent a more energetically favorable carbon source than DOC transported into the aquifer with recharge water due to its higher NOSC (Boye et al., 2017; Keiluweit et al., 2016; LaRowe and Van Cappellen, 2011) (Fig. 2).

4.2 Microbial processing of organic matter in anaerobic environments

The direct link between microbial use and chemical character afforded by this study demonstrated that compound indices do not predict degradability. During incubation, native microbes successfully transformed all compound types (Figs. 5 and S5), including those traditionally considered molecularly recalcitrant (e.g., aromatic and condensed aromatic compounds; Lutzow et al., 2006) and those currently considered thermodynamically unviable in anaerobic conditions (e.g., NOSC below -0.3 , Boye et al., 2017; Keiluweit et al., 2016). The former result aligns with current understanding that under the correct conditions, microbes can process all carbon types (Lehmann and Kleber, 2015; Schmidt et al., 2011), but the latter result challenges the emerging idea that reduced carbon is thermodynamically unviable in anaerobic environments (Boye et al., 2017; Keiluweit et al., 2016).

Chemical indices did, however, give insight into rates of compound transformation. In the anaerobic incubation, NOSC controlled the rate of compound transformation. Aromatic CHO compounds with a high NOSC were microbially transformed first (Figs. 4 and S3), while alkane and olefinic CHO compounds with a low NOSC persisted (i.e., were transformed last; Figs. 5 and S5). Thus, while low NOSC values did not inhibit compound degradation, they did slow the rate of compound use. The more energetically favorable compounds with a high NOSC were targeted first, while the less energetically favorable compounds with a low NOSC were targeted last. Compound size was also an important indicator. Larger compounds were actively transformed, while smaller compounds persisted (Fig. 5; Figs. S5 and S6).

Overall, these patterns are consistent with current soil science literature indicating that biotic communities eventually degrade and mineralize all forms of organic matter by continually converting larger energy-rich compounds into smaller energy-poor compounds (Lehmann and Kleber, 2015; Lutzow et al., 2006). Conceptually, the continual input and microbial conversion of carbon compounds coupled with the slower degradation rate of reduced carbon compounds in anaerobic conditions explains the apparent persistence of compounds with a low NOSC in natural anaerobic environments (Boye et al., 2017). The explanation implies that the degradation of highly reduced carbon compounds is thermodynamically viable in anaerobic conditions, which is in contrast to previous interpretations, but acknowledges that the reaction is less energetically favorable than the degradation of more oxidized carbon compounds, and thus, reduced carbon compounds are more slowly processed. In contrast to an incubation bottle, in an open system, where fresh carbon is continually supplied, the slower degradation rate of reduced carbon compounds would enable this portion of the organic carbon pool to build up in an anaerobic environment, skewing the NOSC distribution of soluble carbon to lower values. This interpretation aligns results from the incubation exper-

iment, where every carbon type, regardless of NOSC, was transformed (i.e., lost; Fig. 5; Figs. S5 and S6), with field observations indicating that soluble carbon from anoxic sediments have lower NOSC values than that from oxic sediments (Boye et al., 2017).

Data availability. Unprocessed FT-ICR-MS data are available at <https://doi.pangaea.de/10.1594/PANGAEA.876660> (Pracht et al., 2017).

The Supplement related to this article is available online at <https://doi.org/10.5194/bg-15-1733-2018-supplement>.

Author contributions. LEP and RBN designed the incubation experiment. LEP and RJA carried out the incubation experiment. MMT conducted the FT-ICR-MS analysis. LEP, RJA, MMT and RBN processed the FT-ICR-MS data. LEP and RBN interpreted the FT-ICR-MS data and wrote the manuscript with editing input from MMT.

Competing interests. The authors declare that they have no conflict of interest.

Acknowledgements. We thank Rosalie K. Chu for analytical assistance with FT-ICR-MS, Jesse C. Turner for help with figure formatting, and Steve J. Burges for helpful comments that improved the manuscript. A portion of the research was performed using EMSL, a DOE Office of Science User Facility sponsored by the Office of Biological and Environmental Research (BER) and located at Pacific Northwest National Laboratory.

Edited by: Jack Middelburg

Reviewed by: Patrick Hatcher and two anonymous referees

References

- Amelung, W., Brodowski, S., Sandhage-Hofmann, A., and Bol, R.: Chapter 6 Combining Biomarker with Stable Isotope Analyses for Assessing the Transformation and Turnover of Soil Organic Matter, in: *Advances in Agronomy*, 100, 155–250, Academic Press., Cambridge, MA, USA, 2008.
- Bailey, V. L., Smith, A. P., Tfaily, M., Fansler, S. J., and Bond-Lamberty, B.: Differences in soluble organic carbon chemistry in pore waters sampled from different pore size domains, *Soil Biol. Biochem.*, 107, 133–143, <https://doi.org/10.1016/j.soilbio.2016.11.025>, 2017.
- Baldock, J. A. and Skjemstad, J. O.: Role of the soil matrix and minerals in protecting natural organic materials against biological attack, *Org. Geochem.*, 31, 697–710, 2000.

- Benz, R. and Bauer, K.: Permeation of hydrophilic molecules through the outer membrane of gram-negative bacteria, *Eur. J. Biochem.*, 176, 1–19, 1988.
- Boye, K., Noël, V., Tfaily, M. M., Bone, S. E., Williams, K. H., Bargar, J. R., and Fendorf, S.: Thermodynamically controlled preservation of organic carbon in floodplains, *Nat. Geosci.*, 10, 415–421, <https://doi.org/10.1038/ngeo2940>, 2017.
- Brosnan, J. T. and Brosnan, M. E.: The sulfur-containing amino acids: an overview, *J. Nutr.*, 136, 1636–1640, 2006.
- Brown, K. A.: Formation of organic sulphur in anaerobic peat, *Soil Biol. Biochem.*, 18, 131–140, [https://doi.org/10.1016/0038-0717\(86\)90017-9](https://doi.org/10.1016/0038-0717(86)90017-9), 1986.
- Chapelle, F. H., Bradley, P. M., Goode, D. J., Tiedeman, C., Lacombe, P. J., Kaiser, K., and Benner, R.: Biochemical Indicators for the Bioavailability of Organic Carbon in Ground Water, *Ground Water*, 47, 108–121, <https://doi.org/10.1111/j.1745-6584.2008.00493.x>, 2009.
- Chen, H., Abdulla, H. A. N., Sanders, R. L., Myneni, S. C. B., Mopper, K., and Hatcher, P. G.: Production of Black Carbon-like and Aliphatic Molecules from Terrestrial Dissolved Organic Matter in the Presence of Sunlight and Iron, *Environ. Sci. Tech. Lett.*, 1, 399–404, <https://doi.org/10.1021/ez5002598>, 2014.
- Chipman, L., Podgorski, D., Green, S., Kostka, J., Cooper, W., and Huettel, M.: Decomposition of plankton-derived dissolved organic matter in permeable coastal sediments, *Limnol. Oceanogr.*, 55, 857, 2010.
- D'Andrilli, J., Foreman, C. M., Marshall, A. G., and McKnight, D. M.: Characterization of IHSS Pony Lake fulvic acid dissolved organic matter by electrospray ionization Fourier transform ion cyclotron resonance mass spectrometry and fluorescence spectroscopy, *Org. Geochem.*, 65, 19–28, <https://doi.org/10.1016/j.orggeochem.2013.09.013>, 2013.
- D'Andrilli, J., Cooper, W. T., Foreman, C. M., and Marshall, A. G.: An ultrahigh-resolution mass spectrometry index to estimate natural organic matter lability: FTICRMS organic matter molecular lability index, *Rapid Commun. Mass Spectrom.*, 29, 2385–2401, <https://doi.org/10.1002/rcm.7400>, 2015.
- Eusterhues, K., Rumpel, C., Kleber, M., and Kögel-Knabner, I.: Stabilisation of soil organic matter by interactions with minerals as revealed by mineral dissolution and oxidative degradation, *Org. Geochem.*, 34, 1591–1600, <https://doi.org/10.1016/j.orggeochem.2003.08.007>, 2003.
- Evert, M. H.: Influence of NOM Molecular Characteristic on Uranium Cycling in a Catchment, MSc, Ohio State University, USA, 106 pp., 2015.
- Fontaine, S., Barot, S., Barré, P., Bdioui, N., Mary, B., and Rumpel, C.: Stability of organic carbon in deep soil layers controlled by fresh carbon supply, *Nature*, 450, 277–280, <https://doi.org/10.1038/nature06275>, 2007.
- Gonsior, M., Peake, B. M., Cooper, W. T., Podgorski, D. C., D'Andrilli, J., Dittmar, T., and Cooper, W. J.: Characterization of dissolved organic matter across the Subtropical Convergence off the South Island, New Zealand, *Mar. Chem.*, 123, 99–110, <https://doi.org/10.1016/j.marchem.2010.10.004>, 2011.
- Gu, B., Schmitt, J., Chen, Z., Liang, L., and McCarthy, J. F.: Adsorption and desorption of natural organic matter on iron oxide: mechanisms and models, *Environ. Sci. Technol.*, 28, 38–46, 1994.
- Gurwick, N. P., McCorkle, D. M., Groffman, P. M., Gold, A. J., Kellogg, D. Q., and Seitz-Rundlett, P.: Mineralization of ancient carbon in the subsurface of riparian forests: Ancient Riparian Carbon Mineralization, *J. Geophys. Res.-Biogeosci.*, 113, G02021, <https://doi.org/10.1029/2007JG000482>, 2008.
- Harvey, C. F., Swartz, C. H., Badruzzaman, A. B. M., Keon-Blute, N., Yu, W., Ali, M. A., Jay, J., Beckie, R., Niedan, V., Brabander, D., Oates, P. M., Ashfaq, K. N., Islam, S., Hemond, H. F., and Ahmed, M. F.: Arsenic Mobility and Groundwater Extraction in Bangladesh, *Science*, 298, 1602–1606, <https://doi.org/10.1126/science.1076978>, 2002.
- Harvey, C. F., Ashfaq, K. N., Yu, W., Badruzzaman, A. B. M., Ali, M. A., Oates, P. M., Michael, H. A., Neumann, R. B., Beckie, R., Islam, S., and Ahmed, M. F.: Groundwater dynamics and arsenic contamination in Bangladesh, *Chem. Geol.*, 228, 112–136, <https://doi.org/10.1016/j.chemgeo.2005.11.025>, 2006.
- Heitmann, T. and Blodau, C.: Oxidation and incorporation of hydrogen sulfide by dissolved organic matter, *Chem. Geol.*, 235, 12–20, <https://doi.org/10.1016/j.chemgeo.2006.05.011>, 2006.
- Jakobsen, R. and Postma, D.: In situ rates of sulfate reduction in an aquifer (Rømø, Denmark) and implications for the reactivity of organic matter, *Geology*, 22, 1101–1106, 1994.
- Jardine, P. M., McCarthy, J. F., and Weber, N. L.: Mechanisms of Dissolved Organic Carbon Adsorption on Soil, *Soil Sci. Soc. Am. J.*, 53, 1378–1385, <https://doi.org/10.2136/sssaj1989.03615995005300050013x>, 1989.
- Jin, Q. and Bethke, C. M.: A New Rate Law Describing Microbial Respiration, *Appl. Environ. Microbiol.*, 69, 2340–2348, <https://doi.org/10.1128/AEM.69.4.2340-2348.2003>, 2003.
- Kaiser, K. and Zech, W.: Release of Natural Organic Matter Sorbed to Oxides and a Subsoil, *Soil Sci. Soc. Am. J.*, 63, 1157–1166, <https://doi.org/10.2136/sssaj1999.6351157x>, 1999.
- Keiluweit, M., Nico, P. S., Kleber, M., and Fendorf, S.: Are oxygen limitations under recognized regulators of organic carbon turnover in upland soils?, *Biogeochemistry*, 127, 157–171, <https://doi.org/10.1007/s10533-015-0180-6>, 2016.
- Kim, S., Kramer, R. W., and Hatcher, P. G.: Graphical Method for Analysis of Ultrahigh-Resolution Broadband Mass Spectra of Natural Organic Matter, the Van Krevelen Diagram, *Anal. Chem.*, 75, 5336–5344, <https://doi.org/10.1021/ac034415p>, 2003.
- Kim, S., Kaplan, L. A., and Hatcher, P. G.: Biodegradable dissolved organic matter in a temperate and a tropical stream determined from ultra-high resolution mass spectrometry, *Limnol. Oceanogr.*, 51, 1054–1063, 2006.
- Koch, B. P. and Dittmar, T.: From mass to structure: an aromaticity index for high-resolution mass data of natural organic matter, *Rapid Commun. Mass Spectrom.*, 20, 926–932, <https://doi.org/10.1002/rcm.2386>, 2006.
- Koch, B. P. and Dittmar, T.: From mass to structure: an aromaticity index for high-resolution mass data of natural organic matter, *Rapid Commun. Mass Spectrom.*, 30, 250–250, <https://doi.org/10.1002/rcm.7433>, 2016.
- Kohnen, M. E. L., Sinninghe Damste, J. S., and De Leeuw, J. W.: Biases from natural sulphurization in palaeoenvironmental reconstruction based on hydrocarbon biomarker distributions, *Nature*, 349, 775–778, <https://doi.org/10.1038/349775a0>, 1991.

- Korom, S. F.: Natural denitrification in the saturated zone: A review, *Water Resour. Res.*, 28, 1657–1668, <https://doi.org/10.1029/92WR00252>, 1992.
- Kujawinski, E. B. and Behn, M. D.: Automated Analysis of Electrospray Ionization Fourier Transform Ion Cyclotron Resonance Mass Spectra of Natural Organic Matter, *Anal. Chem.*, 78, 4363–4373, <https://doi.org/10.1021/ac0600306>, 2006.
- LaRowe, D. E. and Van Cappellen, P.: Degradation of natural organic matter: A thermodynamic analysis, *Geochim. Cosmochim. Acta*, 75, 2030–2042, <https://doi.org/10.1016/j.gca.2011.01.020>, 2011.
- LeBlanc, D. R.: Sewage plume in a sand and gravel aquifer, Cape Cod, Massachusetts, USGS Numbered Series, U.S. G. P. O., available at: <http://pubs.er.usgs.gov/publication/wsp2218> (last access: 22 November 2017), 1984.
- Lehmann, J. and Kleber, M.: The contentious nature of soil organic matter, *Nature*, 528, 60–68, <https://doi.org/10.1038/nature16069>, 2015.
- Longnecker, K. and Kujawinski, E. B.: Composition of dissolved organic matter in groundwater, *Geochim. Cosmochim. Acta*, 75, 2752–2761, <https://doi.org/10.1016/j.gca.2011.02.020>, 2011.
- Lutzow, M. v., Kogel-Knabner, I., Ekschmitt, K., Matzner, E., Guggenberger, G., Marschner, B., and Flessa, H.: Stabilization of organic matter in temperate soils: mechanisms and their relevance under different soil conditions - a review, *Eur. J. Soil Sci.*, 57, 426–445, <https://doi.org/10.1111/j.1365-2389.2006.00809.x>, 2006.
- Madigan, M. T., Martinko, J. M., and Parker, J.: *Brock Biology of Microorganisms*, 10th Edn., Prentice Hall, Upper Saddle River, NJ, USA, 2003.
- Mailloux, B. J., Trembath-Reichert, E., Cheung, J., Watson, M., Stute, M., Freyer, G. A., Ferguson, A. S., Ahmed, K. M., Alam, M. J., Buchholz, B. A., Thomas, J., Layton, A. C., Zheng, Y., Bostick, B. C., and Geen, A. van: Advection of surface-derived organic carbon fuels microbial reduction in Bangladesh groundwater, *P. Natl. Acad. Sci.*, 110, 5331–5335, <https://doi.org/10.1073/pnas.1213141110>, 2013.
- McIntyre, C. and McRae, C.: Proposed guidelines for sample preparation and ESI-MS analysis of humic substances to avoid self-esterification, *Org. Geochem.*, 36, 543–553, <https://doi.org/10.1016/j.orggeochem.2004.11.002>, 2005.
- Mikutta, R., Kleber, M., Torn, M. S., and Jahn, R.: Stabilization of Soil Organic Matter: Association with Minerals or Chemical Recalcitrance?, *Biogeochemistry*, 77, 25–56, <https://doi.org/10.1007/s10533-005-0712-6>, 2006.
- Minor, E. C., Steinbring, C. J., Longnecker, K., and Kujawinski, E. B.: Characterization of dissolved organic matter in Lake Superior and its watershed using ultrahigh resolution mass spectrometry, *Org. Geochem.*, 43, 1–11, <https://doi.org/10.1016/j.orggeochem.2011.11.007>, 2012.
- Neumann, R. B., Ashfaq, K. N., Badruzzaman, A. B. M., Ashraf Ali, M., Shoemaker, J. K., and Harvey, C. F.: Anthropogenic influences on groundwater arsenic concentrations in Bangladesh, *Nat. Geosci.*, 3, 46–52, <https://doi.org/10.1038/ngeo685>, 2010.
- Neumann, R. B., Pracht, L. E., Polizzotto, M. L., Badruzzaman, A. B. M., and Ali, M. A.: Biodegradable Organic Carbon in Sediments of an Arsenic-Contaminated Aquifer in Bangladesh, *Environ. Sci. Tech. Lett.*, 1, 221–225, <https://doi.org/10.1021/ez5000644>, 2014.
- Nikaido, H. and Vaara, M.: Molecular basis of bacterial outer membrane permeability, *Microbiol. Rev.*, 49, 1–32, 1985.
- Ohno, T., Sleighter, R. L., and Hatcher, P. G.: Comparative study of organic matter chemical characterization using negative and positive mode electrospray ionization ultrahigh-resolution mass spectrometry, *Anal. Bioanal. Chem.*, 408, 2497–2504, <https://doi.org/10.1007/s00216-016-9346-x>, 2016.
- Parkin, T. B. and Simpkins, W. W.: Contemporary Groundwater Methane Production from Pleistocene Carbon, *J. Environ. Qual.*, 24, 367–372, <https://doi.org/10.2134/jeq1995.00472425002400020021x>, 1995.
- Perliger, J. A., Kalluri, V. M., Venkatapathy, R., and Angst, W.: Addition of Hydrogen Sulfide to Juglone, *Environ. Sci. Technol.*, 36, 2663–2669, <https://doi.org/10.1021/es015602c>, 2002.
- Petridis, L., Ambaye, H., Jagadamma, S., Kilbey, S. M., Lokitz, B. S., Lauter, V., and Mayes, M. A.: Spatial Arrangement of Organic Compounds on a Model Mineral Surface: Implications for Soil Organic Matter Stabilization, *Environ. Sci. Technol.*, 48, 79–84, <https://doi.org/10.1021/es403430k>, 2014.
- Postma, D., Larsen, F., Minh Hue, N. T., Duc, M. T., Viet, P. H., Nhan, P. Q., and Jessen, S.: Arsenic in groundwater of the Red River floodplain, Vietnam: Controlling geochemical processes and reactive transport modeling, *Geochim. Cosmochim. Acta*, 71, 5054–5071, <https://doi.org/10.1016/j.gca.2007.08.020>, 2007.
- Postma, D., Larsen, F., Thai, N. T., Trang, P. T. K., Jakobsen, R., Nhan, P. Q., Long, T. V., Viet, P. H., and Murray, A. S.: Groundwater arsenic concentrations in Vietnam controlled by sediment age, *Nat. Geosci.*, 5, 656–661, <https://doi.org/10.1038/ngeo1540>, 2012.
- Pracht, L. E., Tfaily, M. M., Ardissono, R. J., and Neumann, R. B.: FT-ICR-MS characterization of organic matter and further sample details of Bangladeshi aquifer sediment incubated with aquifer recharge waters, Dataset #876660, available at: <https://doi.org/10.1594/PANGAEA.876660> (last access: 19 March 2018), Pangaea, 2017.
- Schmidt, M. W. I., Torn, M. S., Abiven, S., Dittmar, T., Guggenberger, G., Janssens, I. A., Kleber, M., Kogel-Knabner, I., Lehmann, J., Manning, D. A. C., Nannipieri, P., Rasse, D. P., Weiner, S., and Trumbore, S. E.: Persistence of soil organic matter as an ecosystem property, *Nature*, 478, 49–56, <https://doi.org/10.1038/nature10386>, 2011.
- Schouten, S., van Driel, G. B., Sinnighe Damsté, J. S., and de Leeuw, J. W.: Natural sulphurization of ketones and aldehydes: A key reaction in the formation of organic sulphur compounds, *Geochim. Cosmochim. Acta*, 57, 5111–5116, [https://doi.org/10.1016/0016-7037\(93\)90613-2](https://doi.org/10.1016/0016-7037(93)90613-2), 1993.
- Sleighter, R. L. and Hatcher, P. G.: The application of electrospray ionization coupled to ultrahigh resolution mass spectrometry for the molecular characterization of natural organic matter, *J. Mass Spectrom.*, 42, 559–574, <https://doi.org/10.1002/jms.1221>, 2007.
- Sleighter, R. L. and Hatcher, P. G.: Molecular characterization of dissolved organic matter (DOM) along a river to ocean transect of the lower Chesapeake Bay by ultrahigh resolution electrospray ionization Fourier transform ion cyclotron resonance mass spectrometry, *Mar. Chem.*, 110, 140–152, <https://doi.org/10.1016/j.marchem.2008.04.008>, 2008.
- Spencer, R. G. M., Guo, W., Raymond, P. A., Dittmar, T., Hood, E., Fellman, J., and Stubbins, A.: Source and biolability of an-

- cient dissolved organic matter in glacier and lake ecosystems on the Tibetan Plateau, *Geochim. Cosmochim. Acta*, 142, 64–74, <https://doi.org/10.1016/j.gca.2014.08.006>, 2014.
- Stenson, A. C., Marshall, A. G., and Cooper, W. T.: Exact Masses and Chemical Formulas of Individual Suwannee River Fulvic Acids from Ultrahigh Resolution Electrospray Ionization Fourier Transform Ion Cyclotron Resonance Mass Spectra, *Anal. Chem.*, 75, 1275–1284, <https://doi.org/10.1021/ac026106p>, 2003.
- Swartz, C. H., Blute, N. K., Badruzzman, B., Ali, A., Brabander, D., Jay, J., Besancon, J., Islam, S., Hemond, H. F., and Harvey, C. F.: Mobility of arsenic in a Bangladesh aquifer: Inferences from geochemical profiles, leaching data, and mineralogical characterization, *Geochim. Cosmochim. Acta*, 68, 4539–4557, <https://doi.org/10.1016/j.gca.2004.04.020>, 2004.
- Tfaily, M. M., Hamdan, R., Corbett, J. E., Chanton, J. P., Glaser, P. H., and Cooper, W. T.: Investigating dissolved organic matter decomposition in northern peatlands using complimentary analytical techniques, *Geochim. Cosmochim. Acta*, 112, 116–129, <https://doi.org/10.1016/j.gca.2013.03.002>, 2013.
- Thauer, R. K.: Biochemistry of methanogenesis: a tribute to Marjory Stephenson: 1998 Marjory Stephenson Prize Lecture, *Microbiology*, 144, 2377–2406, <https://doi.org/10.1099/00221287-144-9-2377>, 1998.
- Trulleyova, S. and Rulik, M.: Determination of biodegradable dissolved organic carbon in waters: comparison of batch methods, *Sci. Total Environ.*, 332, 253–260, <https://doi.org/10.1016/j.scitotenv.2004.04.018>, 2004.
- Urban, N. R., Ernst, K., and Bernasconi, S.: Addition of sulfur to organic matter during early diagenesis of lake sediments, *Geochim. Cosmochim. Acta*, 63, 837–853, [https://doi.org/10.1016/S0016-7037\(98\)00306-8](https://doi.org/10.1016/S0016-7037(98)00306-8), 1999.
- van Geen, A., Bostick, B. C., Thi Kim Trang, P., Lan, V. M., Mai, N.-N., Manh, P. D., Viet, P. H., Radloff, K., Aziz, Z., Mey, J. L., Stahl, M. O., Harvey, C. F., Oates, P., Weinman, B., Stengel, C., Frei, F., Kipfer, R., and Berg, M.: Retardation of arsenic transport through a Pleistocene aquifer, *Nature*, 501, 204–207, <https://doi.org/10.1038/nature12444>, 2013.
- Weiss, M. S., Abele, U., Weckesser, J., Welte, W., Schiltz, E., and Schulz, G. E.: Molecular architecture and electrostatic properties of a bacterial porin, *Science*, 254, 1627–1630, <https://doi.org/10.1126/science.1721242>, 1991.
- Willoughby, A. S., Wozniak, A. S., and Hatcher, P. G.: A molecular-level approach for characterizing water-insoluble components of ambient organic aerosol particulates using ultrahigh-resolution mass spectrometry, *Atmos. Chem. Phys.*, 14, 10299–10314, <https://doi.org/10.5194/acp-14-10299-2014>, 2014.