

Supplement of Biogeosciences, 15, 2393–2410, 2018
<https://doi.org/10.5194/bg-15-2393-2018-supplement>
© Author(s) 2018. This work is distributed under
the Creative Commons Attribution 3.0 License.



Supplement of

Ocean acidification changes the structure of an Antarctic coastal protistan community

Alyce M. Hancock et al.

Correspondence to: Alyce M. Hancock (alyce.hancock@utas.edu.au)

The copyright of individual parts of the supplement might differ from the CC BY 3.0 License.

Table S1. Measurements of seawater conditions at time of sampling from Prydz Bay, East Antarctica (19th November 2014). Data are mean \pm one standard deviation of all six minicosm measurements.

Condition	Value
$f\text{CO}_2$ (μatm)	356 ± 6
pH_T	8.08 ± 0
DIC ($\mu\text{mol kg}^{-1}$)	2187 ± 6
PA ($\mu\text{mol kg}^{-1}$)	2317 ± 6
Temperature ($^\circ\text{C}$)	-1.03 ± 0.17
NO_x (μM)	26.19 ± 0.74
Phosphorus (μM)	1.74 ± 0.02
Silicate (μM)	60.75 ± 0.91

Table S2. Mean carbonate chemistry speciation of pH_T and DIC (measured) and $f\text{CO}_2$ and practical alkalinity (PA, calculated) for each minicosm tank after acclimation (days 8 to 18). Data are mean \pm one standard deviation of day 8 to 18 measurements in each minicosm.

Minicosm	pH_T	DIC ($\mu\text{mol kg}^{-1}$)	$f\text{CO}_2$ (μatm)	PA ($\mu\text{mol kg}^{-1}$)
1	8.10 ± 0.04	2188 ± 6	343 ± 30	2324 ± 11
2	7.94 ± 0.03	2243 ± 8	506 ± 43	2325 ± 10
3	7.85 ± 0.04	2270 ± 5	634 ± 63	2325 ± 12
4	7.69 ± 0.07	2314 ± 11	953 ± 148	2321 ± 11
5	7.61 ± 0.04	2337 ± 5	1140 ± 112	2320 ± 10
6	7.45 ± 0.04	2377 ± 8	1641 ± 140	2312 ± 10

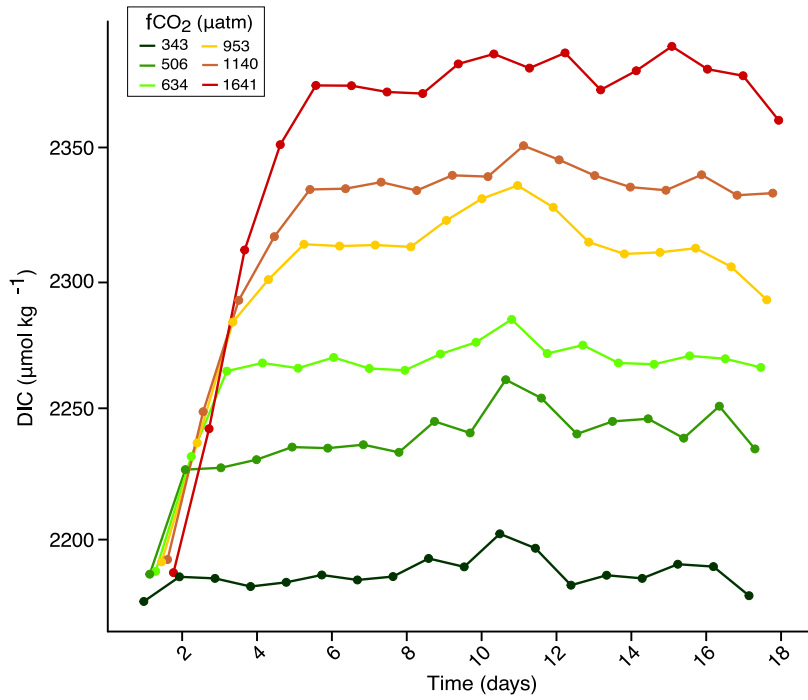


Figure S1. Temporal development of DIC within each minicosm throughout the experimental period.

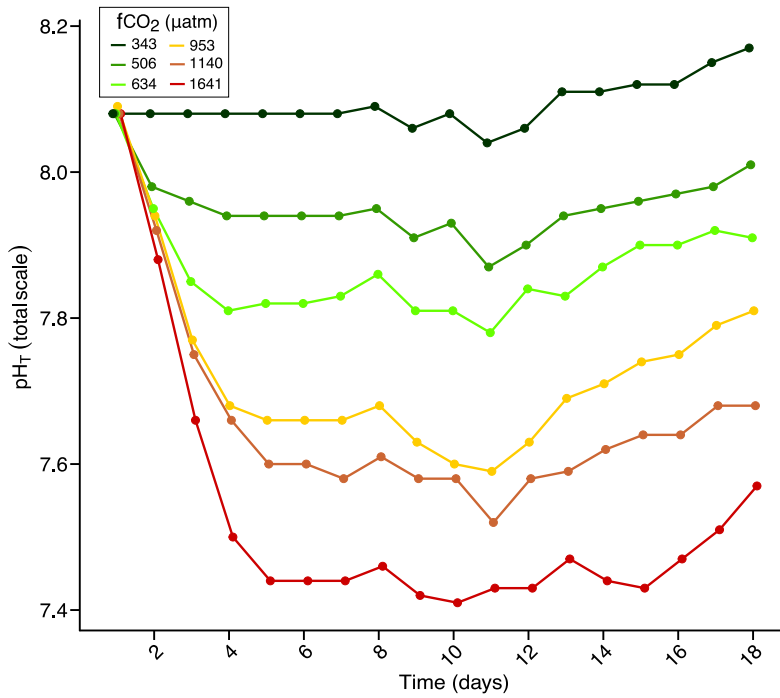


Figure S2. Temporal development of pH_T (total scale) within each minicosm throughout the experimental period.

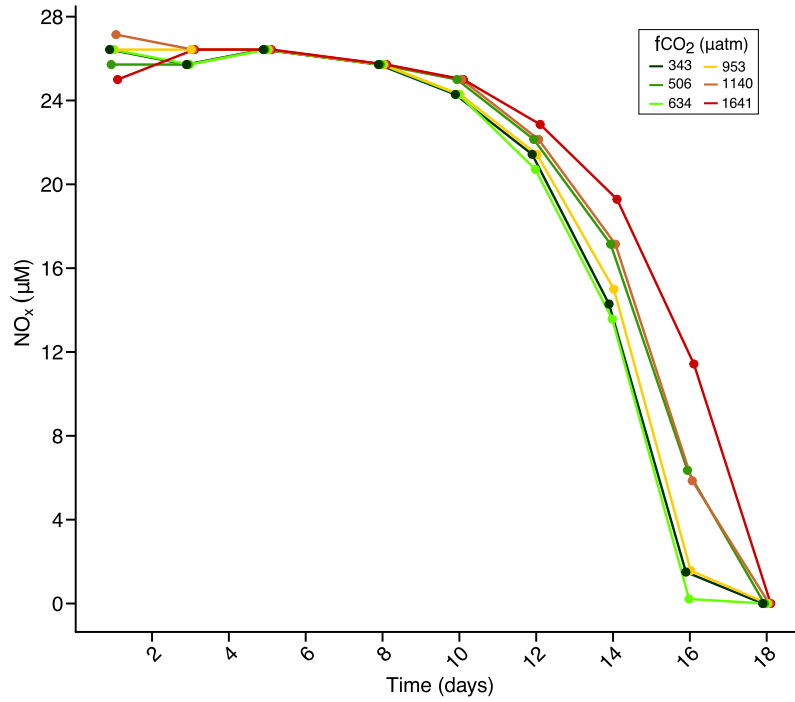


Figure S3. Nitrate/nitrite (NO_x) concentrations within each minicosm throughout the experimental period.

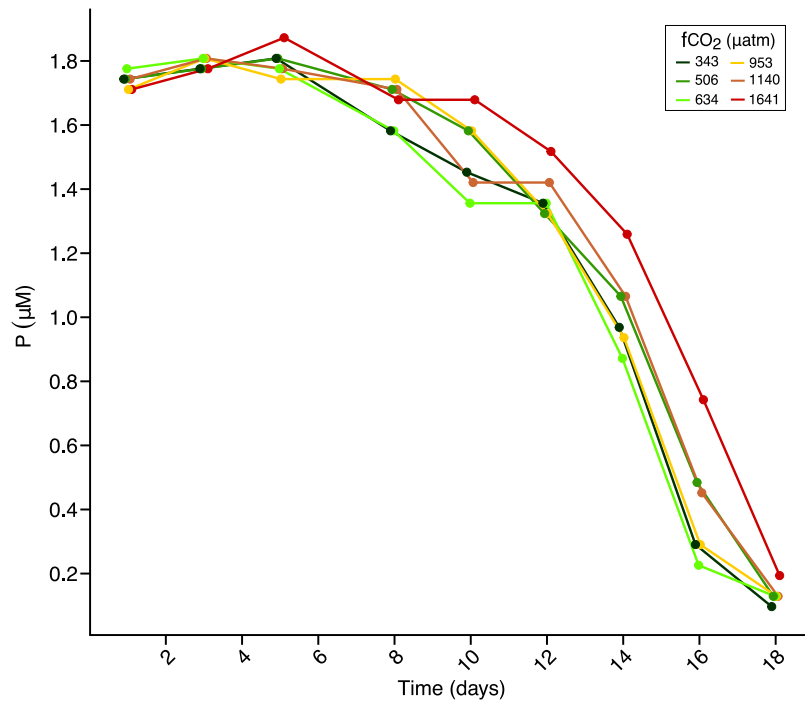


Figure S4. Dissolved reactive phosphorus (P) concentrations within each minicosm throughout the experimental period.

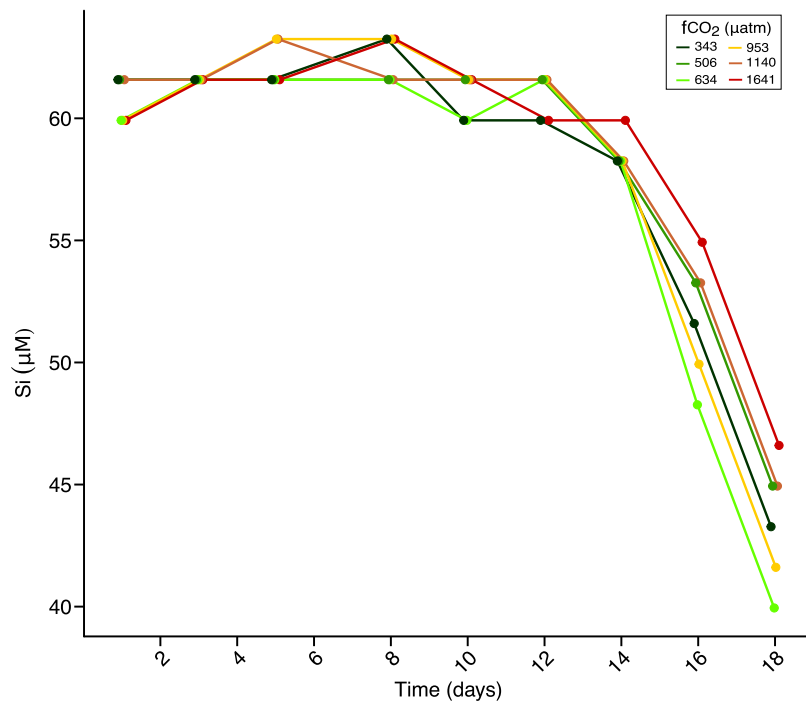


Figure S5. Molybdate reactive silica (Si) concentrations within each minicosm throughout the experimental period.