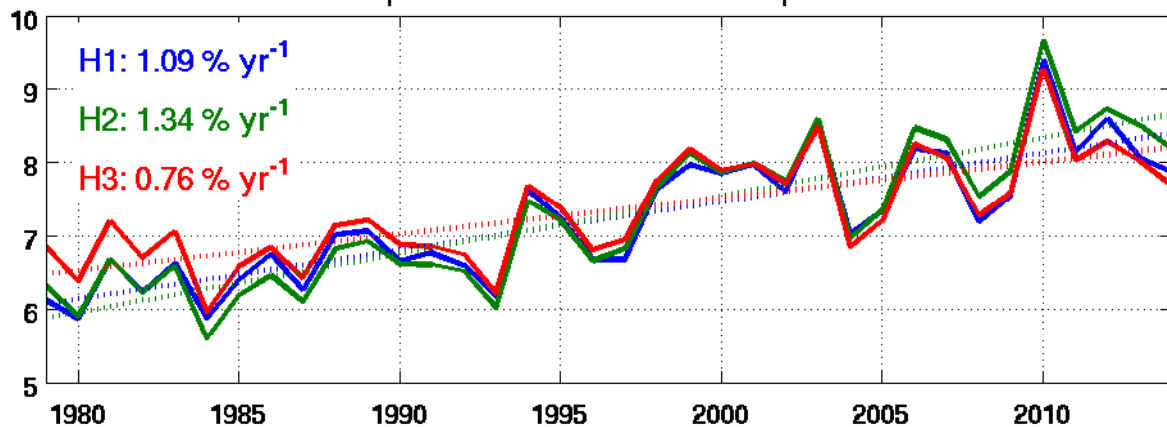
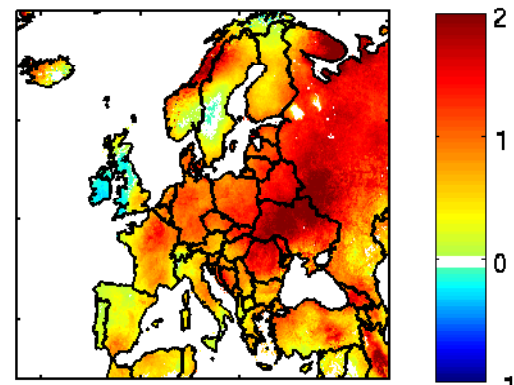
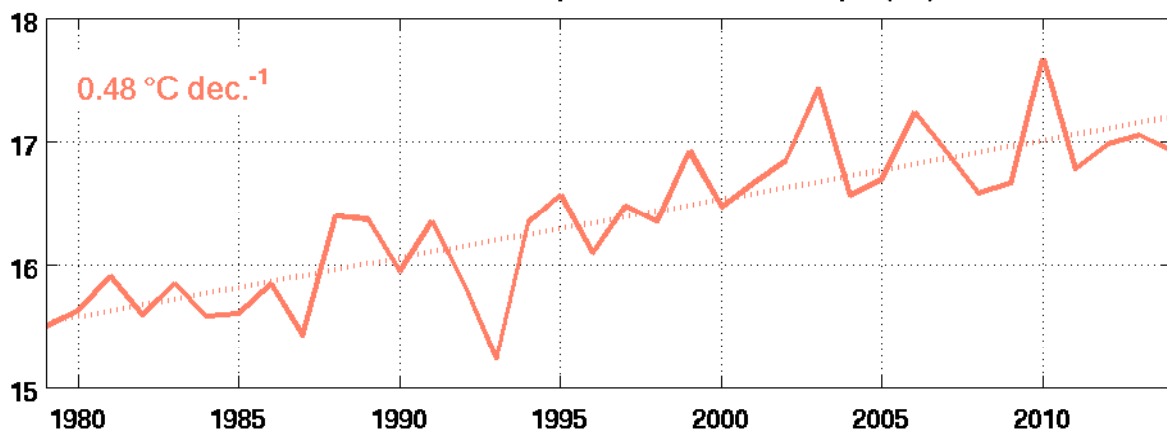
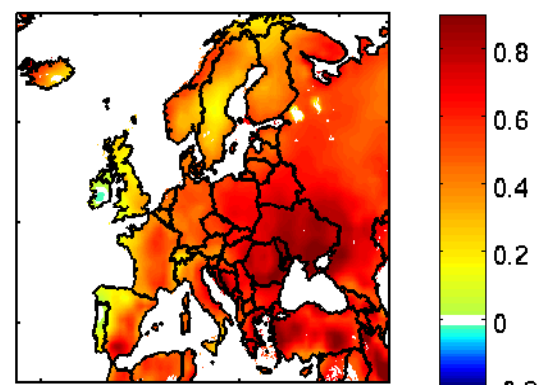


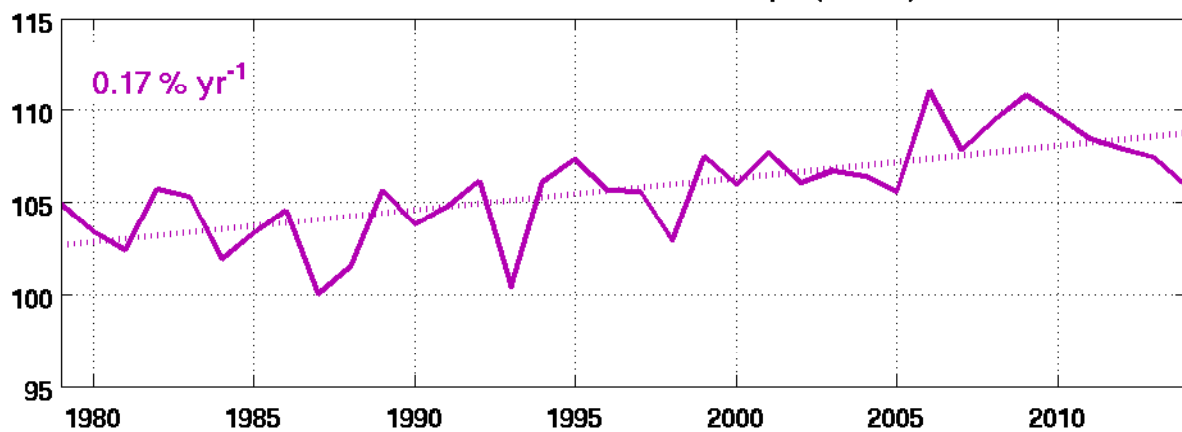
(a)

Annual isoprene emission over Europe (Tg yr^{-1})Isoprene trend H3 ($\% \text{ yr}^{-1}$)

(b)

Mean summer temperature over Europe ($^{\circ}\text{C}$)Temperature trend ($^{\circ}\text{C dec.}^{-1}$)

(c)

Mean summer PAR over Europe (W m^{-2})PAR trend ($\% \text{ yr}^{-1}$)