

Supplement of Biogeosciences, 15, 5745–5759, 2018
<https://doi.org/10.5194/bg-15-5745-2018-supplement>
© Author(s) 2018. This work is distributed under
the Creative Commons Attribution 4.0 License.



Supplement of

**Effects of light and temperature on Mg uptake, growth, and calcification
in the proxy climate archive *Clathromorphum compactum***

Siobhan Williams et al.

Correspondence to: Siobhan Williams (siobhan.williams@mail.utoronto.ca)

The copyright of individual parts of the supplement might differ from the CC BY 4.0 License.

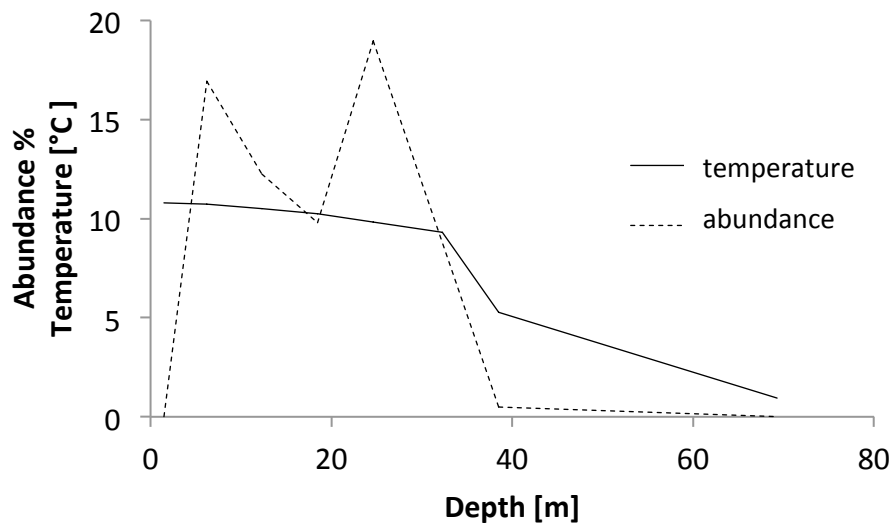


Figure S1. Depth profile of mean temperature (solid black line) and % relative abundance of *C. compactum* (dashed line) averaged from data at four exposed stations in eastern Newfoundland in 1964 (see Adey, 1966). Station localities: Fermeuse; Bay Bulls; Skerwink, Trinity Bay; and Cape St. Martin.

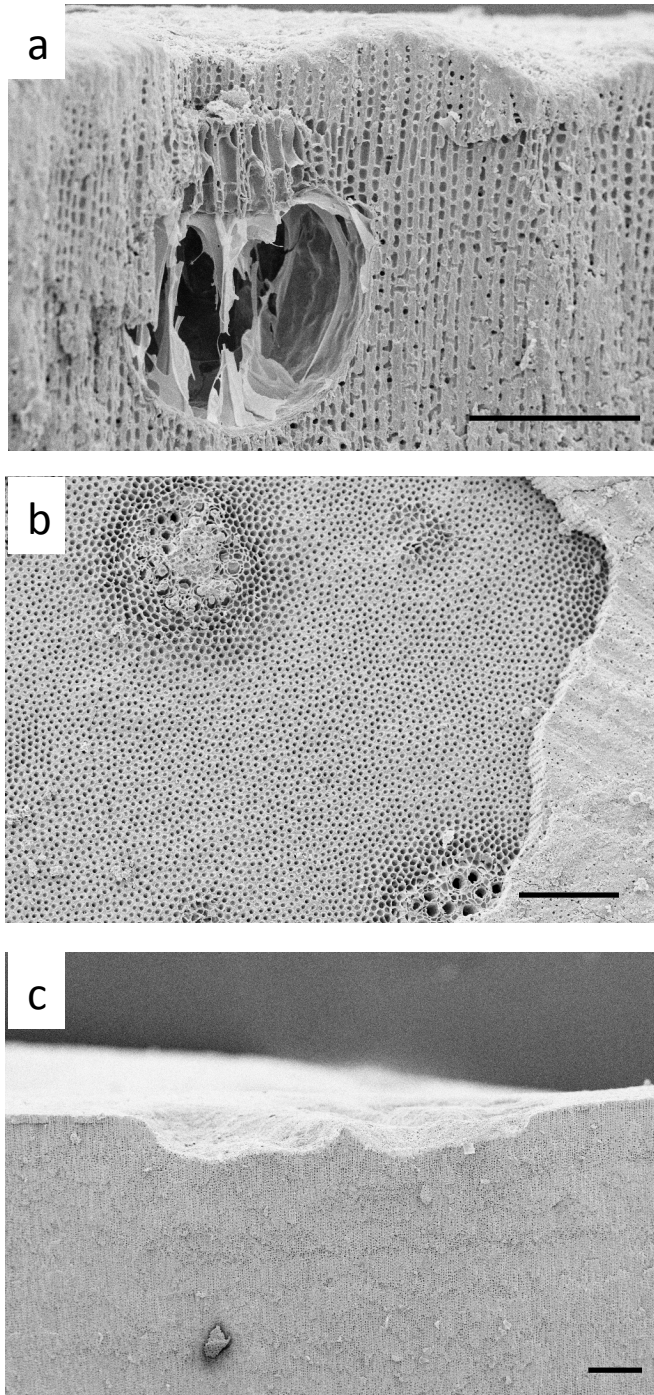


Figure S2. (a) Sub-mature asexual conceptacle in *C. compactum* mound collected from high-light section of 4°C tank on December 1, 2012. Although depressed from lack of new production, epithallial cap over conceptacle has yet to break out (ClEx 121 4hl). (b) Surface view, at level of meristem, with much of epithallium broken off, showing two submature asexual conceptacles. Collected December 1, 2012 from high light section of 7°C tank (ClEx 121 7hl). (c) Grazed-out conceptacles in *C. compactum* from low light section of 4°C tank collected on January 4, 2013. Scale bars, 100 μm (a, b), and 200 μm (c).