



Life cycle of bamboo in the southwestern Amazon and its relation to fire events

Ricardo Dalagnol¹, Fabien Hubert Wagner¹, Lênio Soares Galvão¹, Bruce Walker Nelson², and Luiz Eduardo Oliveira e Cruz de Aragão^{1,3}

¹Remote Sensing Division, National Institute for Space Research – INPE, São José dos Campos, SP, 12227-010, Brazil

²Environmental Dynamics Department, National Institute of Amazonian Research – INPA, Manaus, AM, 69067-375, Brazil

³College of Life and Environmental Sciences, University of Exeter, EX4 4RJ, UK

Correspondence: Ricardo Dalagnol (ricds@hotmail.com)

Received: 25 April 2018 – Discussion started: 2 May 2018

Revised: 25 September 2018 – Accepted: 29 September 2018 – Published: 18 October 2018

Abstract. Bamboo-dominated forests comprise 1 % of the world's forests and 3 % of the Amazon forests. The *Guadua* spp. bamboos that dominate the southwest Amazon are semelparous; thus flowering and fruiting occur once in a lifetime before death. These events occur in massive spatially organized patches every 28 years and produce huge quantities of necromass. The bamboo–fire hypothesis argues that increased dry fuel after die-off enhances fire probability, creating opportunities that favor bamboo growth. In this study, our aim is to map the bamboo-dominated forests and test the bamboo–fire hypothesis using satellite imagery. Specifically, we developed and validated a method to map the bamboo die-off and its spatial distribution using satellite-derived reflectance time series from the Moderate Resolution Imaging Spectroradiometer (MODIS) and explored the bamboo–fire hypothesis by evaluating the relationship between bamboo die-off and fires detected by the MODIS thermal anomalies product in the southwest Amazon. Our findings show that the near-infrared (NIR) is the most sensitive spectral interval to characterize bamboo growth and cohort age. Automatic detection of historical bamboo die-off achieved an accuracy above 79 %. We mapped and estimated 15.5 million ha of bamboo-dominated forests in the region. The bamboo–fire hypothesis was not supported because only a small fraction of bamboo areas burned during the analysis timescale, and, in general, bamboo did not show higher fire probability after the die-off. Nonetheless, fire occurrence was 45 % higher in dead than live bamboo in drought years, associated with ignition

sources from land use, suggesting a bamboo–human–fire association. Although our findings show that the observed fire was not sufficient to drive bamboo dominance, the increased fire occurrence in dead bamboo in drought years may contribute to the maintenance of bamboo and potential expansion into adjacent bamboo-free forests. Fire can even bring deadly consequences to these adjacent forests under climate change effects.

1 Introduction

Bamboo-dominated forests represent 1 % of global forests. They occur in tropical, subtropical and mild temperate zones and are found mainly in Asia (24 million ha), South America (10 million ha) and Africa (2.8 million ha) (Lobovikov et al., 2007). Their spatial distribution is likely underestimated in South America as a recent study showed that these forests cover at least 16.15 million ha of Amazonian forests over Brazil, Peru and Bolivia (Carvalho et al., 2013).

Bamboo is a major forest product that plays an important economic and cultural role in the Amazon. It has been used for over a millennium by indigenous people for shelter, food, fuel, hunting, fishing and musical instruments (Lobovikov et al., 2007; Rockwell et al., 2014). The first studies on the distribution of these forests in the Amazon region postulated that they occurred as a consequence of human disturbance or were deliberately planted (Sombroek, 1966; Balée,

1989). However, recent phytolith analysis revealed that bamboo dominated these forests before human occupation in South America (Olivier et al., 2009; Watling et al., 2017).

In the southwest Amazon, the predominant forest type is non-flooded open-canopy rain forest on *terra firme*, often dominated by *Guadua* bamboos and mostly (93 %) preserved (IBGE, 2006; Trancoso et al., 2010). In bamboo-dominated areas, two species of semi-scandent woody bamboos predominate: *Guadua weberbaueri* Pilger and *Guadua sarcocarpa* Londoño & Peterson. Like many other woody bamboo species, these *Guadua* bamboos are semelparous, producing flowers and fruits once in a lifetime before dying (Janzen, 1976; Griscom and Ashton, 2003). Flowering, fruiting and death can be massive and highly synchronized in space and time. Their diameter at breast height ranges from 4 to 24 cm (Castro et al., 2013). Height is up to 30 m but usually varies from 10 to 20 m (Londoño and Peterson, 1991). The juvenile bamboos usually reach the sunlit portion of canopy by 10 years of age, when they accelerate in growth (Smith and Nelson, 2011). They do not form continuous pure stands, being mixed among the trees, yet achieve remarkable high densities ($2309 \pm 1149 \text{ ind ha}^{-1}$) and have significant ecological impacts (Castro et al., 2013). Thus, these forests support up to 40 % less tree species diversity than nearby bamboo-free forests and from 30 % to 50 % less carbon stored as a consequence of the lower woody tree density (Silveira, 2001; Rockwell et al., 2014). Bamboo-dominated forests also have elevated tree mortality rates ($3.6 \pm 2.5 \% \text{ yr}^{-1}$) (Castro et al., 2013; Medeiros et al., 2013) when compared even to the typically fast-turnover forests in the western Amazon ($2.62 \% \text{ yr}^{-1}$) (Johnson et al., 2016). A total of 74 different bamboo populations, that is, patches with individuals of the same internal age, have been identified so far in the southwest Amazon, with a mean patch area of 330 km², and up to 2570 km² for the largest patch (Carvalho et al., 2013). The mean lifetime of these bamboos was estimated as 28 years (Carvalho et al., 2013).

The locally synchronized death of semi-scandent bamboos produces large amounts of necromass in large patches over a short time. Decomposition of dead leaves and branches is rapid, but a layer of culms can remain intact on the forest floor for up to 3 years (Silveira, 2001). When neighboring populations (patches) of bamboo go through reproductive events one after another in successive years, this is known in the literature as a flowering wave. The current hypotheses to explain this phenomenon include climatic variations, severe environmental pressures such as floods and fire (Franklin et al., 2010; Smith and Nelson, 2011) and incipient allochronic speciation – stochastically forming small and rare temporally offset daughter patches at the margin of an expanding parent population.

Two main hypotheses, which are not competing but complementary, have been proposed to explain the dominance of semi-scandent bamboos in Amazon forests. Firstly, they cause elevated physical damage to trees by loading and

crushing, while also suppressing recruitment of late succession tree species (Griscom and Ashton, 2003). Secondly, they increase fire probability via their mast seeding behavior followed by the synchronized death of the adult cohort, which produces large fuel loads. The fire would then eliminate canopy trees, form gaps and inhibit tree recruitment, while creating an optimal environment for the bamboo seedling cohort. This latter hypothesis is called the bamboo–fire hypothesis (Keeley and Bond, 1999). This hypothesis is attractive as it explains how bamboos can regain dominance of the forest after relinquishing space to trees when the adults die. Analysis of charcoal in soils of three Amazon bamboo-dominated forests sites showed a long history of fire occurrence (McMichael et al., 2013). Smith and Nelson (2011) showed that fire disturbance favored the expansion of bamboos in the Amazon. Another study indicated that pre-Columbian people used fire and bamboo die-off patches to facilitate forest clearing and constructed geoglyphs, which, nowadays, can be found under the closed-canopy forest (McMichael et al., 2014). Although these studies do not support fire as the main driver of bamboo distribution (bamboo–fire hypothesis), they show associations between the bamboo die-off and increased fire occurrence, and potential human interactions in these processes.

Bamboo-dominated *terra firme* forests in the southwest Amazon can be detected by the optical bands of orbital sensors at the adult stage, while the borders of each internally synchronized population can be detected after die-off events (Nelson, 1994). Carvalho et al. (2013) showed that the near-infrared (NIR) band of the Thematic Mapper (TM)/Landsat-5 allowed the best discrimination between bamboo-free forest, forest with adult bamboo and forest with recently dead bamboo. Forests with adult bamboos showed higher reflectance in the NIR than bamboo-free areas or areas with recently dead bamboo. Forests in which the newly sprouted cohort of seedlings is confined to the understory were not visually distinguishable from bamboo-free forest. The juvenile bamboo stays hidden in the understory up to 10 years of age, which is the moment it starts reaching the canopy (Smith and Nelson, 2011; Carvalho et al., 2013). When analyzing Enhanced Vegetation Index (EVI) data from the Moderate Resolution Imaging Spectroradiometer (MODIS), processed by the Multi-Angle Implementation of Atmospheric Correction (MAIAC) algorithm (Lyapustin et al., 2012), Wagner et al. (2017) detected some patches of adult bamboo during a climate driver study of Amazon forest greening. The bamboo patches presented two peaks of MODIS EVI per year (dry and wet seasons) compared to one peak observed in the wet season over bamboo-free forest.

Because the previous investigations used visual interpretation of satellite data and performed manual delineation of the bamboo areas (Carvalho et al., 2013), they were limited to the identification of large areas and constrained by the analyst's visual acuity. Further studies are therefore necessary to understand the bamboo life cycle and its spectral char-

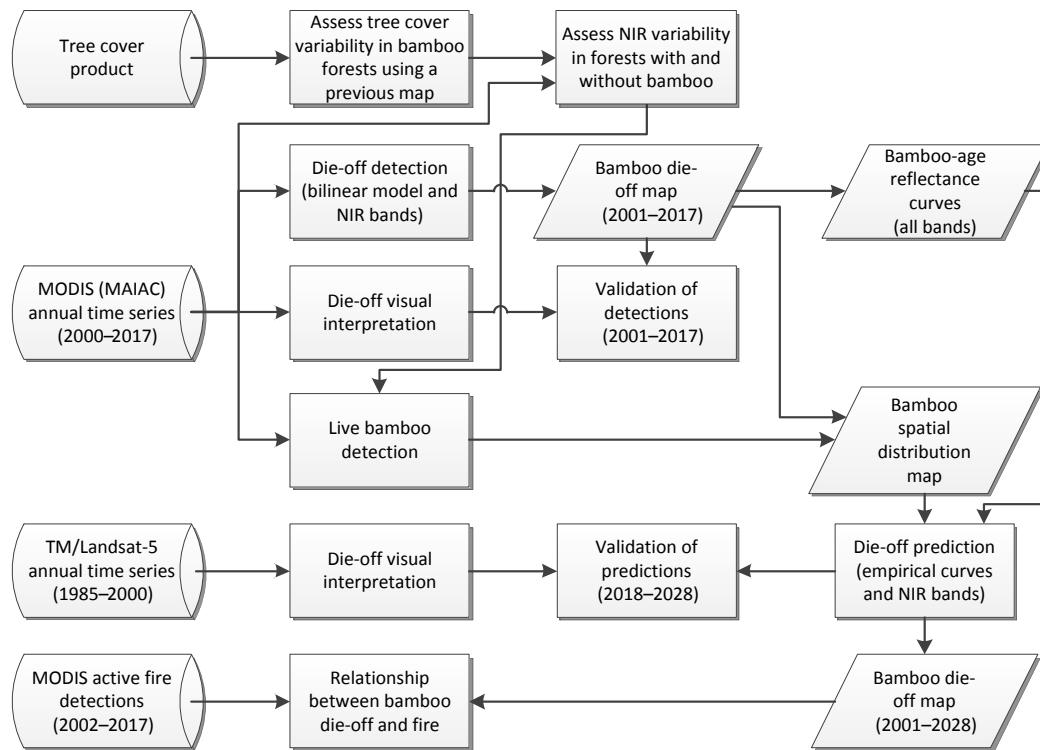


Figure 1. Flowchart of the analyses.

acteristics, as well as to establish automatic approaches for detecting die-off events in bamboo-dominated areas. These approaches can enable analyses of ecological processes associated with these events, such as the interactions between bamboo and fire (Keeley and Bond, 1999), bamboo flowering wave patterns (Franklin et al., 2010) and the distribution of “bamboo specialist” bird species (Kratler, 1997).

In this study, our aim is to map the bamboo-dominated forests and test the bamboo–fire hypothesis. Specifically, we (i) described the tree cover and MODIS NIR reflectance variation in areas with and without bamboo; (ii) assessed a method to map the die-off, spatial distribution and age structure of bamboo-dominated areas and (iii) investigated the relationship of bamboo with fire occurrence in the southwest Amazon. We also aimed to provide near-term, spatially resolved predictions of future bamboo behavior to allow our method to be further tested, validated and improved over the coming years.

2 Material and methods

An overview of the analyses conducted in the study is presented in Fig. 1 and then described in detail in the subsequent sections.

2.1 Study area

The study area is located in the southwest Amazon between the longitudes 74 and 67° W and latitudes 13 and 6° S, covering parts of Brazil, Peru and Bolivia (Fig. 2). The predominant forest type is non-flooded open-canopy rain forest on *terra firme*, often dominated by bamboos of *Guadua* genera and mostly (93 %) preserved from human disturbances (IBGE, 2006; Trancoso et al., 2010).

The most important soil types are Chromic Alisol, Red-yellow Argisol, Haplic Cambisol, Ferrocyclic Podsol, Haplic Gleysol, Red-yellow Latosol, Chromic Luvisol and Haplic Plinthosol (dos Santos et al., 2011). In bamboo-dominated areas, the soils have a tendency to be more fertile, richer in exchangeable cations, more easily eroded, more poorly drained and more clay-rich than the soils where bamboo is excluded (Carvalho et al., 2013). Naturally high erosion leads to a gently rolling hilly landscape (McMichael et al., 2014) with muddy streams and rivers. Based on the 19-year time series of the Tropical Rainfall Measuring Mission (TRMM) satellite, annual rainfall ranges from 1800 to 3400 mm, with 0 to 5 dry months (i.e., less than 100 mm month⁻¹). The average temperature is 27 °C. Minimum rainfall and temperature are recorded in July (Dalagnol et al., 2017).

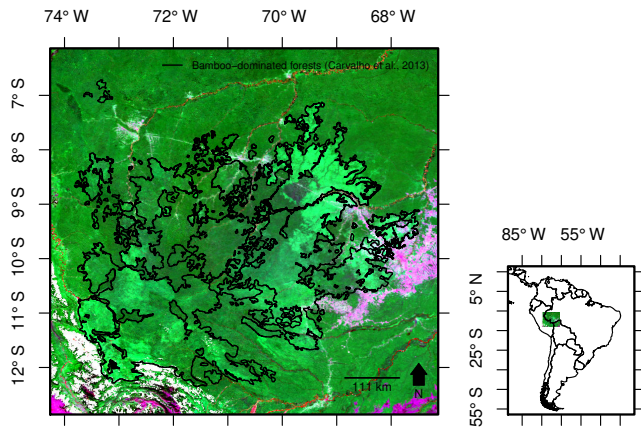


Figure 2. Bamboo-dominated forests in the southwestern Amazon. The image in the background is a false-color composite from MODIS (MAIAC) images of bands 1 (red), 2 (NIR) and 6 (short-wave infrared), in RGB, respectively, in August 2015. The black lines indicate the perimeter of the bamboo-dominated areas delineated in a previous study (Carvalho et al., 2013).

2.2 Satellite data and products

2.2.1 MODIS (MAIAC) surface reflectance data

A time series of MODIS (MAIAC) data was preprocessed in order to map the bamboo ages and die-off – further described in the die-off detection section. Daily surface reflectance data were obtained from the MODIS product MCD19A1-C6, acquired from Terra and Aqua satellites, from 2000 to 2017 (Lyapustin and Wang, 2018), corrected for atmospheric effects by the MAIAC algorithm (Lyapustin et al., 2012). The data were obtained from the NASA Center for Climate Simulation (NCCS) repository (available at <ftp://dataportal.nccs.nasa.gov/DataRelease/>, last access: 23 April 2018). We used MAIAC surface reflectance and bidirectional reflectance distribution function (BRDF) products at spatial resolution of 1 km, daily temporal resolution, in eight spectral bands: red, 620–670 nm (B1); NIR-1, 841–876 nm (B2); blue-1, 459–479 nm (B3); green, 545–565 nm (B4); NIR-2, 1230–1250 nm (B5); shortwave infrared-1 (SWIR-1), 1628–1652 nm (B6); SWIR-2, 2105–2155 nm (B7); and blue-2, 405–420 nm (B8).

In order to minimize the differences in sun-sensor geometry between the MODIS scenes, which could affect our time series analysis, the daily surface reflectance was normalized to a fixed nadir view and a 45° solar zenith angle using the BRDF and the Ross-Thick Li-Sparse (RTLS) model (Lucht and Lewis, 2000). Parameters of the RTLS model and BRDF kernel weights are part of the MAIAC product suite with temporal resolution of 8 days – a period in which daily observations of different view angles were integrated and used for BRDF parameters’ retrieval. Hence, the normalized surface reflectance, called Bidirectional Reflectance Factor (BRF_n),

was calculated using Eq. (1) and RTLS volumetric (f_{vol}) and geometric (f_{geo}) parameters, and BRDF isotropic (k_{iso}), volumetric (k_{vol}) and geometric-optical (k_{geo}) kernel weights (Lyapustin et al., 2012).

$$BRF_n = BRF \times \frac{k_{iso} - 0.04578 \times k_{vol} - 1.10003 \times k_{geo}}{k_{iso} + f_{vol} \times k_{vol} + f_{geo} \times k_{geo}} \quad (1)$$

The BRF_n data were aggregated into 16-day composite intervals by calculating the median on a per-pixel basis. The composites were then merged and converted to geographic projection (datum WGS-84). All these procedures were implemented in R language (R Core Team, 2016).

Annual composites of MODIS NIR surface reflectance data were selected for the die-off detection. The images were selected between July and September to minimize cloud coverage. Furthermore, during these months, the bamboo patches at the adult stage present a well-defined phenological response (peak in MODIS EVI), which is not present in primary forests without bamboo dominance (Wagner et al., 2017). When useful data were not available in the time series due to cloud cover or low-quality pixel retrievals, an imputation method was applied to fill the gaps using the whole time series. As the bamboo-dominated forests present a seasonal spectral response, the imputation was conducted by the Seasonal and Trend decomposition using Loess method (Cleveland et al., 1990). This method decomposes the signal into trend, seasonal and irregular components, interpolates the missing values and then reverts the time series. It is effective when dealing with missing values in seasonal signals when compared to other imputation methods (Steffen, 2015).

2.2.2 TM/Landsat-5 surface reflectance product

A time series of TM/Landsat-5 data was obtained from 1985 to 2000 (one image per year), in order to visually detect bamboo die-off events and create a validation dataset for die-off predictions using MODIS (MAIAC) between 2018 and 2028 – further described in the die-off prediction section. We selected atmospherically corrected surface reflectance images (Landsat collection 1 Level-1) (available at <https://earthexplorer.usgs.gov/>, last access: 9 October 2017) from the quarter July–August–September to increase the chances of obtaining cloud-free data and reduce spectral variations associated with vegetation seasonality. The path row (World Reference System 2) of the time series was 006/065, 003/066, 002/067, 003/067, 005/067 and 003/068. The acquisition dates for each path row are shown in the Table S1 in the Supplement.

2.2.3 Tree cover product

In order to mask areas that were not covered by intact forests (deforested, degraded and secondary forests, pastures and swidden fields) and to analyze the tree cover variability of the bamboo-dominated forests, we used the global forest cover loss 2000–2016 dataset (available at https://earthenginepartners.appspot.com/science-2013-global-forest/download_v1.4.html, last access: 23 November 2017). The dataset is based on Landsat time series data at 30 m spatial resolution (Hansen et al., 2013), and consists of tree cover percentage, gain and loss during 2000–2016 and a mask indicating permanent waterbodies. It was resampled to 1 km spatial resolution using the average interpolation in order to match the resolution of the MODIS (MAIAC) data. A mask of intact forests was created using the tree cover data to select pixels: (i) without permanent waterbodies, (ii) without gain or loss of tree cover during the 2000–2016 period and (iii) above a threshold of 95 % tree cover to detect and filter out non-forested pixels.

The tree cover product was analyzed considering the pre-existent bamboo-dominated forest map from Carvalho et al. (2013) in order to explore the variability of tree cover in forests with and without bamboo which might help in mapping the bamboo-dominated forests. We expect that bamboo-dominated forests present lower tree cover values than bamboo-free forests due to its fast dynamics and higher mortality (Castro et al., 2013; Medeiros et al., 2013). The map from Carvalho et al. (2013) was obtained by visual interpretation of live adult bamboo using two Landsat mosaics 10 years apart from each other (1990 and 2000), supported by the known locations and dates of five bamboo dominated areas. Considering only the pixels inside the bamboo-dominated map, we calculated the 1st, 50th and 99th percentiles of the tree cover product and generated a map showing the areas below the 1st, between the 1st and 99th and above the 99th percentiles of tree cover. The map was qualitatively analyzed, exploring the areas covered by each of the percentile classes.

The tree cover percentile map was also used to assess the variability of NIR reflectance in forests with and without bamboo in order to test if their NIR signals were different and contributed to the bamboo-dominated forests' mapping. We only tested the NIR because of the expected great separability between areas with and without bamboo resultant from the higher NIR signal in bamboo-dominated areas (Carvalho et al., 2013). We analyzed the MODIS NIR-1 reflectance considering all pixels over time in each tree cover class: below 1st, between 1st and 99th and above the 99th percentile. The NIR value distributions were tested for normality using a two-sided Kolmogorov–Smirnov test at a 1 % significance level. For normal distribution, the average and standard deviation were computed. For skewed distribution, a more appropriate method was applied to estimate the average, standard

deviation and skewness parameter (ξ) (Fernandez and Steel, 1998).

2.2.4 MODIS active fire detection product

To test the bamboo–fire hypothesis, a fire occurrence dataset was obtained from MODIS/Aqua satellite active fire data at 1 km spatial resolution from the Brazilian Institute of Space Research (INPE) Burn Database (available at <http://www.inpe.br/queimadas/bdqueimadas/>, last access: 13 February 2018) for the period of 2002–2017 over the study area. This dataset corresponds to geolocations of active burning areas in the moment of satellite overpass.

2.3 Bamboo life cycle spectral characteristics

2.3.1 Die-off detection and validation

To automatically detect the bamboo die-off from 2001 to 2017, we compared each pixel's MODIS (MAIAC) NIR reflectance time series to a bilinear model using Pearson's correlation and an iterative shift approach. The model consisted in a linear increase in reflectance from 1 to 28 % between 1 and 28 years of bamboo age followed by an abrupt decrease to 0 % when the die-off occurs. The model conception was based on Carvalho et al. (2013), who showed that forests with adult bamboo had higher NIR reflectance than forests with juvenile and recently dead bamboo or without bamboo. They also showed that bamboo has a life cycle of approximately 28 years. Thus, since not much was known about the spectral behavior of bamboo growth with age, we chose a bilinear model to characterize the bamboo signal change over time because it was the simplest way to represent the change between life stages. We also assumed the signal coming from the trees as constant over time. Therefore, interannual reflectance variations were attributed to structural changes in the canopy related to bamboos. The Pearson's correlation coefficient (r) between the NIR reflectance time series and the bilinear model for a given pixel was iteratively tested by shifting the position of the NIR time series inside the bilinear model vector. The position showing the highest r corresponded to the estimated age of that pixel from which the die-off year was retrieved. Only pixels with very significant correlations ($p < 0.001$) were selected. The model was tested with both MODIS (MAIAC) NIR bands: NIR-1 band 2 (841–876 nm) and NIR-2 band 5 (1230–1250 nm). Both bands are sensitive to canopy structure scattering, but NIR-2 is also partially sensitive to leaf–canopy water scattering (Gao, 1996), so that could lead to a different detection between bands.

For validation purposes, we compared the detected die-off events with recently dead bamboo areas visually identified in MODIS false color composites (bands 1, 2 and 6 in RGB). In this color composite (Fig. 2), adult bamboo patches show a bright green color due to the comparatively higher NIR reflectance, while dead bamboo patches show a dark blue/gray

color. The visual inspection of bamboo die-off using MODIS and Landsat data was consistent with five bamboo mass flowering events observed in the field (Carvalho et al., 2013). In each of the dead bamboo patches visually detected, the geographic location and die-off year were registered for a sample of 5 random pixels. A total of 78 dead bamboo patches were identified in the 2001–2017 period. Thus, the validation dataset was composed of 390 pixels with corresponding year of bamboo death – the spatial and temporal distribution of the samples are shown in Figs. S1 and S2 in the Supplement. For these pixels, the die-off year detected by our model was retrieved and compared to the validation dataset. To assess the detection, we calculated the accuracy (%) in detecting the exact die-off year, Pearson's correlation and p value and the root mean square error (RMSE) between the automatically detected and visually interpreted die-off year.

2.3.2 Spatial distribution detection

To map the spatial distribution of bamboo-dominated forests for the whole area, we first mapped the live bamboo and then combined it with the die-off detection map (2001–2017). We used two assumptions to map the live bamboo. Over the 18-year period, a live bamboo-dominated pixel should present (i) mean NIR reflectance equal to or greater than the median signal of bamboo-free forests and (ii) an increasing NIR reflectance over time. The median bamboo-free forest signal was derived using the tree cover mask and a threshold that excluded all the potential bamboo-dominated pixels. The threshold was defined as the tree cover percentage above the 99th percentile from bamboo-dominated forests as delineated by Carvalho et al. (2013). We tested whether the mean NIR reflectance of each pixel was statistically lower than the forest median signal using the Student's t test and excluded those pixels. Furthermore, we obtained a linear regression model between the reflectance of each pixel in the time series and a linear increasing vector to identify reflectance increase over time in the bamboo areas. We only selected pixels that showed a very significant ($p < 0.001$) and positive regression slope, indicating the reflectance increase in the NIR. To assess the overall consistency of the map, we compared it with the available bamboo-dominated forests' distribution map from Carvalho et al. (2013).

2.3.3 Bamboo cohort age and spectral variability

We used the die-off map to retrieve spectral data corresponding to each bamboo age in order to assess the spectral variability during the bamboo life cycle, that is, when the signal changes and why, and to corroborate the assumptions made in the bilinear model. Data from all MODIS bands were extracted using the estimated die-off year with very significant correlation ($p < 0.001$) as a starting point. Bamboo cohort age was then calculated backwards and forwards in time during the 2000–2017 period. Reflectance percentiles (1st, 50th

and 99th) per age were calculated to obtain the entitled empirical bamboo-age reflectance curves.

The spectral variability with cohort age was also analyzed in relation to the bamboo-free signal in order to assess the separability of forests with and without bamboo. Pearson's correlation between the median bamboo-free signal, as obtained in a previous section, and bamboo-dominated forest pixels' signal was calculated and assessed as a function of cohort age. The assessment was conducted using the NIR-1 and NIR-2 bands.

2.3.4 Die-off prediction

To assess the age structure of bamboo patches during the whole life cycle, we explored the prediction of die-off events for the bamboo that did not die off during 2001–2017. This was conducted using the NIR-1 and NIR-2 empirical bamboo-age empirical curves as a reference instead of the bilinear model. Since the NIR time series would not present the abrupt change associated with the die-off, the empirical curves should reflect the spectral changes over time with bamboo growth. The prediction followed the same procedures of the detection in assessing the point of maximum correlation between the NIR reflectance time series, but, now also in comparing them to the empirical bamboo-age reflectance curves and predicting the die-off for a whole life cycle during 2001–2028.

Since the validation for 2018–2028 predictions could not be conducted using MODIS data because its time series do not span that time period, we used yearly TM/Landsat-5 color composites (bands 2, 4 and 1 in RGB) during the 1985–2000 period to visually detect the bamboo die-off events that occurred in the last bamboo life cycle and validate the predictions. We assumed that the die-off events that happened in this period would happen again in the next life cycle of the bamboo, from 2018 to 2028. Therefore, we added 29 years to the visually detected die-off year in order to match the next life cycle. The sampling procedure for the validation dataset was similar to the detection, of which 5 pixels were randomly collected for each recently dead bamboo patch visually identified in a given year. A total of 35 dead bamboo patches were identified and 175 pixels were collected with the corresponding years of death. The assessment was conducted by calculating the same metrics as in the die-off detection section. Additionally, in order to assess if the prediction error was randomly distributed, the residuals from predicted minus observed die-off year, where observed is the die-off from the Landsat validation dataset, were tested for normality using a two-sided Kolmogorov–Smirnov test at a 1% significance level.

Since not much was known about the size of bamboo patches, we analyzed the patch size distribution from the prediction map considering grouped pixels with the same die-off year as patches. These grouped pixels with same die-off year were segmented into patches and the patch size distribution

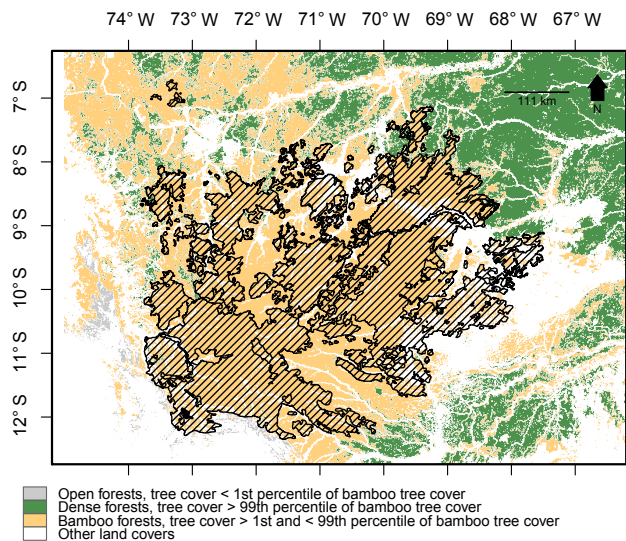


Figure 3. Spatial distribution of stable tree cover percentage percentiles (filtered for tree cover gain and loss and for waterbodies), indicating pixels below, above and within the 1st to 99th percentile range of tree cover found in bamboo-dominated forest (hatched), as delineated by Carvalho et al. (2013).

was assessed by quantifying the number, minimum, maximum, mean and median size of bamboo patches. In order to filter out noise in the predictions (i.e., loose pixels), the minimum patch size was set to 10 km².

2.4 Relationship between bamboo die-off events and MODIS active fire detections

Active fire detections from MODIS/Aqua during 2002–2017 were filtered using yearly non-forest fraction masks. This ensured that active fires occurring over deforested and degraded forests, pastures or swidden areas were removed, and only pixels over forested areas remained in each year. To visualize where the fire occurred, the active fires were plotted over the bamboo spatial distribution map. The number of fires occurring over live bamboo and dead bamboo (died off during 2001–2017) was calculated.

To test whether there was a higher fire occurrence over recently dead bamboo than live bamboo, the active fire detections were analyzed as a function of dead (28, 0 and 1 years) and live bamboo (2 to 27 years) classes. For this purpose, each active fire detection was labeled accordingly to the bamboo age of the pixel where it occurred from the prediction map and then merged into the two classes. We investigated three factors that could affect fire probability: area of bamboo mortality, climate and proximity to ignition sources. Since the total area of a specific age class could interfere with fire frequency, that is, more area would mean higher probability of fire occurrence, we normalized the fire frequency by the area (ha) of its respective age class within the buffer with most fire occurrences, in the year of fire occurrence. Severe

droughts affected Amazonia in 2005, 2010 and 2015/2016, and especially the southwest in 2005 (Aragão et al., 2007; Phillips et al., 2009; Lewis et al., 2011; Aragão et al., 2018). As drought years can enhance fire occurrence in Amazonia (e.g., Brando et al., 2014; Aragão et al., 2018), we analyzed the fire frequency in regular and drought years separately. To assess the influence of ignition sources on the fire occurrence, we filtered active fire detections using buffers of 1, 2 and 3 km around the non-forested areas using the yearly non-forest fraction mask and assessed the number of active fire detections considering each buffer.

The area-normalized fire frequency over dead and live bamboo was compared using a two-way Analysis of Variance (ANOVA) to test whether there were more fires in dead than live bamboo. We tested the effects of bamboo life stage (live or dead), year of fire occurrence and their interactions in active fire detections.

3 Results

3.1 Tree cover analysis

Bamboo-dominated forest, as mapped by Carvalho et al. (2013), spanned a very narrow range of values in the Landsat-derived percent of tree cover product. The 1st and 99th percentiles of tree cover in the bamboo areas were 96.95 % and 99.88 %, respectively, while the median was 99.18 % (Fig. 3). Forests identified as bamboo-free by Carvalho et al. (2013) had tree cover above the 99th percentile in the northeast of the study area, but below the 1st percentile in the southwest of the study area. In the northwest, bamboo-free forests presented tree cover similar to that of bamboo-dominated forests, i.e., between the 1st and 99th percentile.

The MODIS NIR-1 reflectance values over the 2000–2017 period in bamboo-free forests that had tree cover above the 99th percentile of bamboo-dominated areas (Fig. 4b) did not significantly differ from normal distribution ($p = 0.33$). The bamboo-free forests showed the lowest standard deviation (mean = 27.3 % reflectance; SD = 0.9 %) when compared to the bamboo-dominated forests (Fig. 4c). Bamboo-free forests that had tree cover below the 1st percentile of bamboo-dominated areas (Fig. 4a) presented a left-skewed distribution with similar reflectance to the 99th percentile but with higher SD (mean = 27.2 %, SD = 2.6 %, and $x_i = 1.2$ %). Bamboo-dominated forests (Fig. 4c, pixels inside the hatched polygon in Fig. 3) presented a right-skewed distribution with higher NIR-1 reflectance (mean = 28.7 %, SD = 2.1 % and $x_i = 1.9$ %) than the bamboo-free forests.

3.2 Bamboo life cycle spectral characteristics

3.2.1 Die-off detection

When we applied our automatic die-off approach over the canopy scattering (NIR-1 band 2) and canopy water (NIR-

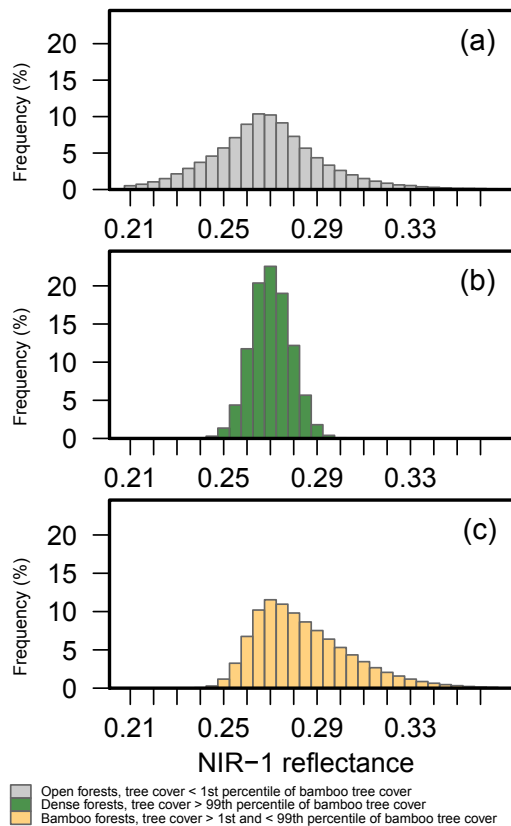


Figure 4. Relative frequency of MODIS NIR-1 reflectance (band 2) from pixels with tree cover percentage (a) below, (b) above and (c) within the 1st to 99th percentile range of tree cover found in bamboo-dominated forest (hatched in Fig. 3), as delineated by Carvalho et al. (2013).

2 band 5) sensitive MODIS NIR bands, differences in detected bamboo areas were observed (81 480 km² for NIR-1 and 86 628 km² for NIR-2). Despite these differences, the resultant die-off year maps were consistent with each other (Fig. 5a and b), with 81 % of the detected die-off events located inside the bamboo-dominated area, as reported by Carvalho et al. (2013). The die-off patches that were detected over a 18-year period inside the previous bamboo-dominated forest map represented 40.7 % and 42.7 % of the total bamboo area using MODIS NIR-1 and NIR-2, respectively. In Fig. 5a and b, 83.6 % of the dead bamboo pixels mapped using the two NIR bands showed the same year of death between the maps. When comparing the areas detected solely by one of the two bands, NIR-1 detected more pixels toward the end of the time period, i.e., die-off areas from 2017 in the northeast between 8–9° S and 69–70° W, while NIR-2 detected additional pixels in the beginning of the time period, i.e., die-off areas from 2001 in the central region between 9–10° S and 70–71° W. Interestingly, some small patches between 8–9° S and 73–74° W presented a unidirectional wave

of mortality from north to south with a delay of 1 year between adjacent patches.

The correlation coefficients found in all the mapped pixels with significant relationship with our bilinear model ($p < 0.001$) were strong ($r > 0.7$). More than 50 % presented even stronger correlations ($r > 0.8$), and 15 % of pixels presented very strong correlation ($r > 0.9$). When the automatic die-off estimates were validated with the visually inspected die-off from 2001–2017, the accuracy from NIR-2 was slightly higher (82.6 %) than that from NIR-1 (79.3 %) (Fig. 5c and d). Both bands showed similarly strong Pearson's correlation ($r > 0.99$, $p < 0.01$), whilst NIR-1 showed slightly lower RMSE (0.48 years) than that from NIR-2 (0.54 years). From the 390 pixels in the validation dataset, 334 and 362 pixels were detected as bamboo die-off by the bilinear model ($p < 0.001$) using the NIR-1 and NIR-2, respectively. The missing 56 (14.4 %) and 28 (7.2 %) pixels were considered to be omission errors in NIR-1 and NIR-2. When we combined the two maps into a single die-off detection map (Fig. S3), a total of 374 pixels from the validation dataset was successfully detected, resulting in only 16 (4.1 %) missing pixels not being detected as bamboo die-off, while accuracy and RMSE were 80 % and 0.51 year, respectively.

3.2.2 Spatial distribution of bamboo-dominated forests

The bamboo-dominated forests were mapped by combining the die-off detection during 2001–2017 (Fig. S3) with the live bamboo detection (Fig. 6). The die-off detection was based on both MODIS NIR-1 and NIR-2, which presented high accuracies, mapping slightly different bamboo patches in Fig. 5. The live bamboo detection was only based on NIR-1, which is shown not to saturate with bamboo growth over time in Fig. 7. A total of 155 159 km² of bamboo-dominated forest was detected in the area. Of this, 112 570 km² or 72.5 % was located inside the bamboo forest mapped by Carvalho et al. (2013). A total of 68.8 % of the bamboo forest area from Carvalho et al. (2013) was covered by the detection. A few large patches were found outside of the previously mapped bamboo spatial distribution, such as in 11.5° S, 70° W, and 13° S, 71° W.

3.2.3 Bamboo cohort age and spectral variability

The reflectance of the MODIS NIR-2 and the two SWIR bands slowly increased with bamboo development up to about 12 years of age, and then increased very steeply from 12 to 14 years (Fig. 7). NIR-1 did not show the same reflectance increase up to 12 years as NIR-2, but also showed the steep increase in reflectance between 12 and 14 years. A pronounced but temporary dip in red and blue-2 reflectance occurred concurrently with this brief and rapid NIR and SWIR increase. Green reflectance increased up to about 17 years then leveled off. The response of two SWIR bands and the NIR-2 band all leveled off after 15 years. The NIR-1,

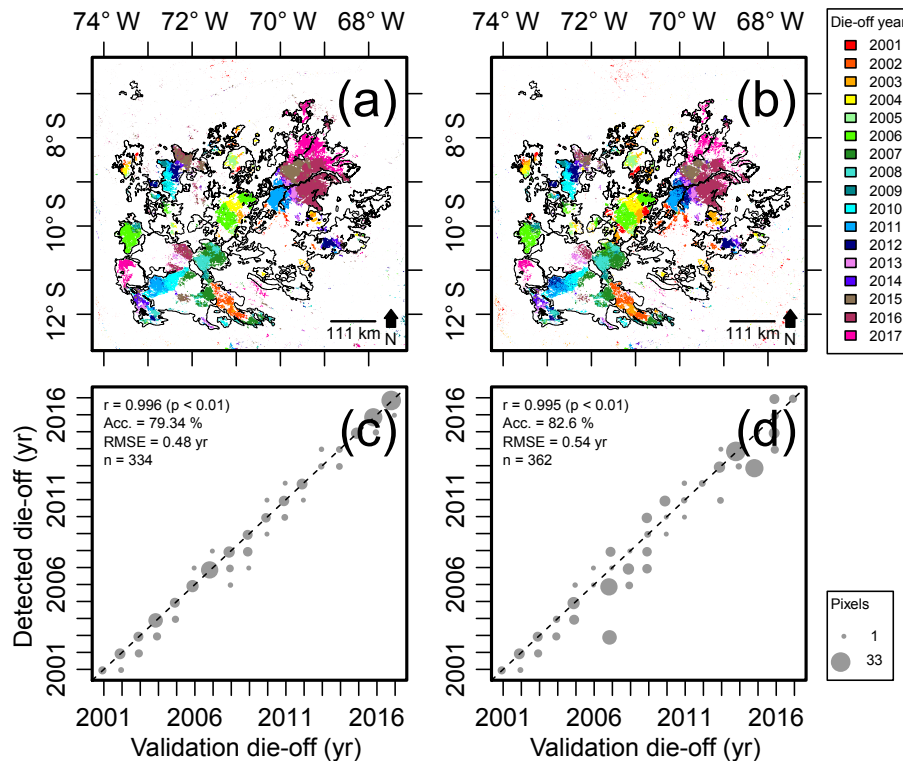


Figure 5. MODIS bamboo die-off detection map from 2001 to 2017 using the bilinear model of expected near-infrared (NIR) reflectance variations as a function of bamboo cohort age, for (a) NIR-1 and (b) NIR-2. Validation between detected die-off and visual interpreted die-off on MODIS false-color composites (2000–2017) for (c) NIR-1 and (d) NIR-2. The dashed line represents the 1 : 1 line. The size of circles is related to the number of pixels that hit the same observed/estimate die-off year.

however, showed increasing reflectance over the cohort remaining life span, until the age of synchronous die-off. The bamboo die-off was marked by a sharp decrease in MODIS NIR-1 and NIR-2 reflectance between 28 and 29 years of age (Fig. 7). A reflectance change with bamboo death was not well defined in the SWIR-1 and SWIR-2 bands. The reflectance of all bands presented high dispersion, with coefficients of variation ranging from 5.9 % to 20.3 %.

The mean Pearson's correlation between the median bamboo-free forest and bamboo-dominated forest NIR-1 reflectance decreased from 0.41 to -0.02 in the transition from juvenile (1–14 years) to adult bamboo stage (15–28 years) (Fig. 8, black boxes). The correlation in the partially water-sensitive NIR-2 did not follow the same pattern (Fig. 8, orange boxes). In NIR-2, the correlation was similar in juvenile ($r = 0.19$) and adult bamboo stages ($r = 0.2$). The correlation's standard deviation was 0.14 and 0.2 for juvenile and adult stages in both bands.

3.2.4 Die-off prediction

Based on the NIR-1 and NIR-2 reflectance from 0 to 28 years of age, we predicted the die-off year from 2000 to 2028 for the whole bamboo spatial distribution (Figs. 9a and S4a, respectively). The estimated die-off years using the empirical

curves during 2001–2017 were 85 % similar to the detection using the initial bilinear model (Fig. 5). The empirical curves achieved an accuracy of 75.45 % (RMSE = 1.11 years) and 69.23 % (RMSE = 1.08 years) for NIR-1 and NIR-2, respectively, in predicting the exact die-off year during 2001–2017, when compared to the visual inspection of MODIS color composites. Die-off prediction during 2018–2028 using the empirical curves (Fig. 7) with NIR-1 and NIR-2 was inspected for consistency using the visual interpretation of TM/Landsat-5 time series (Figs. 9c and S4c, respectively). NIR-1 and NIR-2 presented low accuracy (20.5 % and 3 %, respectively) to predict the exact die-off year with high RMSE (2.92 and 4.25 years, respectively) and significant weak to moderate correlations ($r = 0.41$ and $p < 0.01$; $r = 0.23$ and $p < 0.02$, respectively). The residual distributions of both NIR-1 and NIR-2 prediction models (Fig. 9b and Fig. S4b, respectively) were not significantly different from normal ($p > 0.1$). The NIR-1 model had a mean age error closer to zero (-0.7 years) than that observed from NIR-2 (-1 years). This indicates an average underestimate of the true die-off year when using MODIS NIR-1 and NIR-2, respectively. The standard deviation of the residuals was smaller for NIR-1 (5 years) than for NIR-2 (9 years).

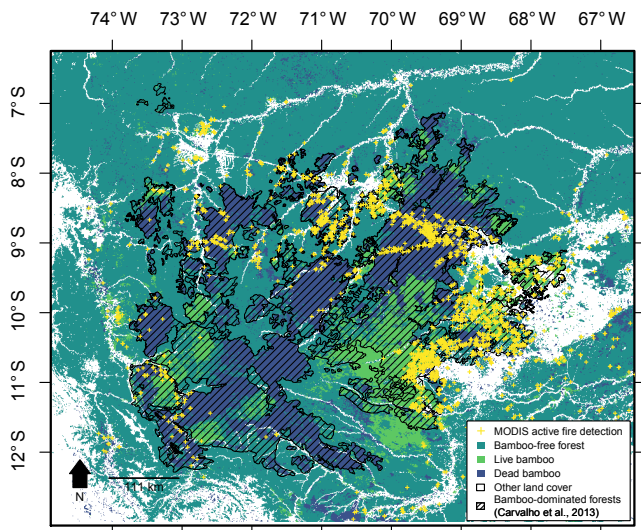


Figure 6. Bamboo-dominated forest map and MODIS active fire detections during 2002–2017 (yellow crosses). Blue pixels are bamboo die-off patches detected during 2001–2017 using the bilinear model. Light green pixels are bamboo that did not die off, but showed increasing NIR signal during 2001–2017 and presented greater NIR mean than forest. Dark green pixels are bamboo-free forests. White pixels are other land cover classes. The hatched polygon represents the bamboo-dominated forests delineated by Carvalho et al. (2013).

Because the MODIS NIR-1 prediction model (Fig. 9) showed higher precision and less bias than the model based on NIR-2 (Fig. S4), we extracted the predicted die-off years from the NIR-1 model to estimate the total area of bamboo die-off per year (Fig. 10) and bamboo population (patch) size distribution (Table 1). Total die-off per year was different from a uniform temporal distribution ($p < 0.01$). For a uniform distribution, the yearly die-off areas would be close to the average of 5350 km². Within the period 2000–2017, the years 2006, 2007, 2011, 2015 and 2016 showed higher than average die-off area (Fig. 10). The largest die-off area was observed in 2016 (14 099 km²). For the 2018–2028 predicted period, the year of 2022 is expected to show the largest bamboo die-off area (16 276 km²).

The detection for 2001–2008, a period that matches the time interval analyzed visually by Carvalho et al. (2013), showed 372 die-off patches with a mean size of 80 km² and a maximum size of 2234 km² (Table 1). Carvalho et al. (2013) found 74 patches with a mean size of 330 km² and a maximum size of 2570 km² during the same period. The detection for 2001–2017 showed 802 patches with a mean size of 85 km² and maximum size of 6162 km² (Table 1). Some patch structures had long and linear perimeters, while others had rectangular shapes (for example near 69°45′ W, 8°48′ S, and 71°13′ W, 9°47′ S) or rounded borders (for example near 70°45′ W, 9°39′ S). We also detected a unidirectional flower-

ing wave from north to south in the patch between 8°9′ S and 73°74′ W, which was also reported by Carvalho et al. (2013).

3.3 Relationship between bamboo die-off events and MODIS active fire detections

Active fire detections were not found in all bamboo patches that died (Fig. 6). We found a total of 2371 MODIS active fire detections inside bamboo-dominated forests between 2002 and 2017, from which 1424 detections (60 %) occurred in bamboo patches that died off and 947 detections (40 %) occurred in live bamboo patches. Active fires were detected mostly near non-forested areas (Fig. 6 in gray). When we excluded the detections up to 1, 2 and 3 km around these areas, the total detections decreased to 1330 (56 %), 18 (0.76 %) and 3 (0.12 %), respectively.

Overall, there was a similar number of active fire detections per hectare in dead and live bamboo (0.18 fires ha⁻¹) (Fig. 11). The ANOVA did not show statistically significant differences in the area-normalized mean active fire detections for the interaction between bamboo stage (dead or live) and year of fire occurrence factors ($p = 0.67$). Individually, bamboo stage also did not show statistical significance in area-normalized mean active fire detections ($p = 0.986$). On the other hand, year of fire did show statistical significance on area-normalized mean active fire detections ($p < 0.01$). The years 2017 and 2016 presented significant higher area-normalized mean active fire detections (0.46 and 0.35 fires ha⁻¹, respectively) than the other years ($p < 0.01$).

For severe drought years, the area-normalized active fire detections in 2005 (0.32 and 0.18 fires ha⁻¹), 2010 (0.22 and 0.12 fires ha⁻¹), 2015 (0.35 and 0.20 fires ha⁻¹) and 2016 (0.57 and 0.33 fires ha⁻¹) in dead and live bamboo, respectively, were not statistically different between the two bamboo life stages ($p = 0.127$). However, drought years presented on average 45 % higher area-normalized mean active fire detections in dead (0.342 fires ha⁻¹) than live (0.236 fires ha⁻¹) bamboo.

4 Discussion

4.1 Tree cover of bamboo-dominated and nearby forests

We found that the bamboo-dominated forests had a narrow range of tree cover values (96.95 % to 99.89 %), and this was below the tree cover values of the closed forests nearby (above 99.89 %). This suggests that these forests have a largely closed canopy but are slightly more open than closed forests without bamboo. Evergreen trees are the dominant life form over most of the southwest Amazon forests, including the ones where bamboo is very abundant. The trees generally comprise 50 % or more of the canopy area in a Landsat or MODIS pixel, even when the bamboo cohorts are at adult stage and show high density (Carvalho et al., 2013). They

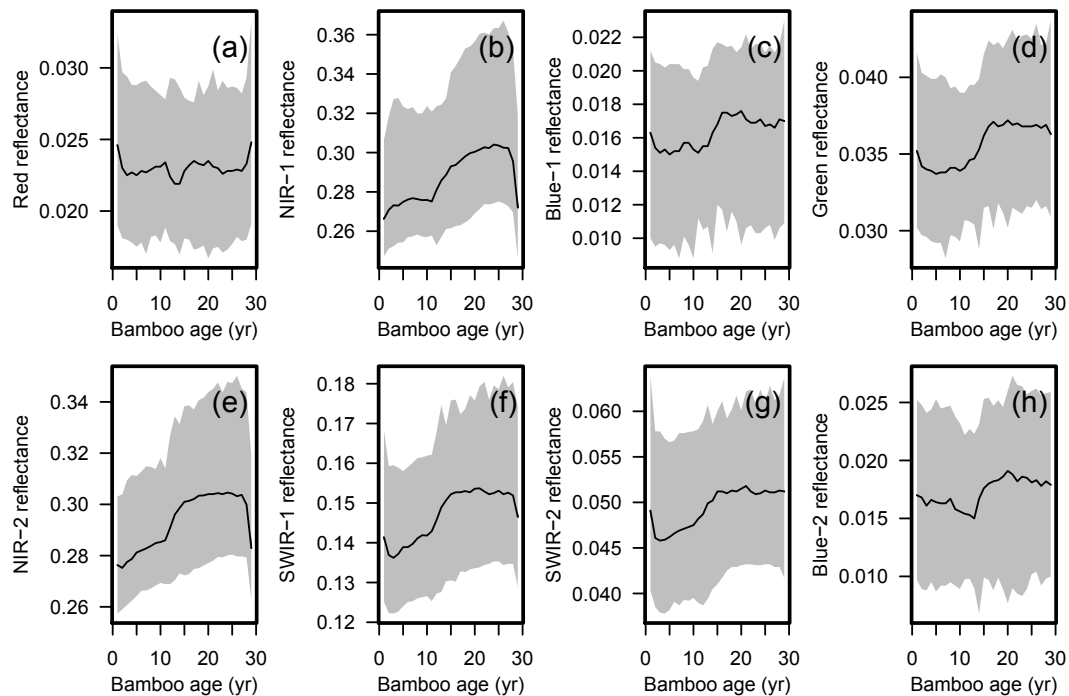


Figure 7. Empirical bamboo-age reflectance curves at ages 0–28 years from MODIS bands 1 to 8 (a–h). Black lines represent the median, while the shaded gray areas represent the 1st and 99th percentile.

Table 1. Bamboo patch sizes obtained from die-off prediction using MODIS NIR-1 filtered by a minimum patch area of 10 km², and comparison of results with those from Carvalho et al. (2013).

Study	Period	<i>n</i>	Mean (km ²)	SD (km ²)	Min (km ²)	Max (km ²)	Median (km ²)
Carvalho et al. (2013)	2001–2008	74	330	–	–	2570	–
This study	2001–2008	372	79.56	242.89	10	2234	21
This study	2001–2017	802	84.57	310.39	10	6162	20
This study	2018–2028	778	33.84	72.38	10	1154	17
This study	2000–2028	1603	59.05	226.66	10	6162	18

also fully dominate the canopy during 30 % of the bamboo life cycle, while juvenile bamboo is confined to the forest understory (Smith and Nelson, 2011). However, the tree cover percent of bamboo-dominated forests was slightly smaller than the bamboo-free areas. We believe this might be related to (i) an increased gap opening associated with faster forest dynamics and tree mortality of these areas influenced by bamboo (Castro et al., 2013; Medeiros et al., 2013), or (ii) artifacts of the tree cover computation method that uses the pixels' reflectance from Hansen et al. (2013).

The MODIS NIR-1 reflectance was normally distributed over bamboo-free forests (Fig. 4b), while it showed a right skewed distribution over the bamboo-dominated forests (Fig. 4c). This result was expected, considering that undisturbed old-growth bamboo-free forests are more or less stable over time, while bamboo-dominated forests' canopies undergo structural changes when the bamboo reaches the height

of tree crowns after 12 years of age (Smith and Nelson, 2011). This is supported by our results that show a continuous increase of NIR reflectance with bamboo age and an abrupt increase of NIR around the age of 12 years.

4.2 Automatic detection of bamboo die-off

The automatic detection of bamboo die-off performed very well, with an accuracy above 79 % when estimating the exact year of bamboo death and a mean error of 0.5 years. When comparing the NIR-1 and NIR-2 bands, the leaf-canopy water sensitivity from NIR-2 might have contributed to a slightly better performance in bamboo die-off detection and the detection of different areas between the bands, which contributed to a larger coverage of the bamboo-dominated forests (Fig. S3). This different sensitivity to vegetation structure is especially highlighted in Fig. 7, which shows that

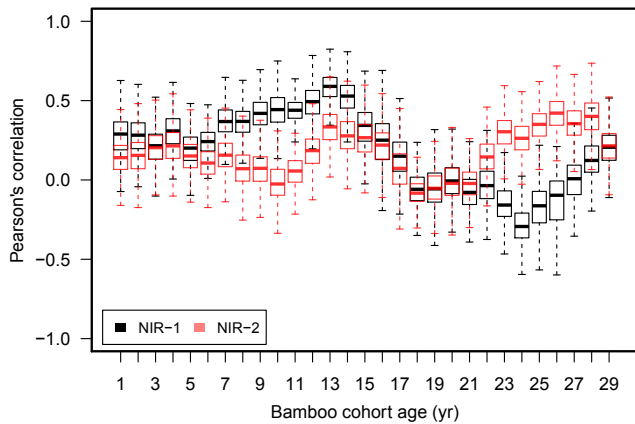


Figure 8. Pearson's correlation coefficients between the median reflectance of bamboo-free forest with the pixel spectral response of bamboo-dominated forests. The results are plotted as a function of the bamboo cohort age for MODIS NIR-1 (in black) and NIR-2 (in orange).

the NIR-2 remains at its lowest during 0–2 years, explaining why the NIR-2 band maps different areas than NIR-1.

Our die-off map is an improvement of the current available maps from the literature because the die-off detection conducted in previous works was solely based on the visual inspection of Landsat and MODIS color composites during 2000–2008, thus leading toward the identification of big clusters of pixels that went through die-off (Table 1) (e.g., Nelson, 1994; Carvalho et al., 2013). Our method is automatic, is easy to implement and can detect relatively small patches because it runs on a per-pixel basis. However, we do not advise attempting detection of very small patches (e.g., < 10 km²) when using MODIS data due to limitations of the spatial resolution of the sensor (1 km). It is important to note that the detected bamboo die-off areas were not confounded with recently deforested areas, as the tree cover product did not point out forest losses in bamboo die-off areas. Since the method can detect bamboo die-off without a priori knowledge of the bamboo spatial distribution (Fig. 6), it could be used to better describe and understand the spatial organization of the bamboo stands that show synchronized die-off in forests around the world.

Our validation dataset was composed of 390 pixels visually detected in 78 bamboo patches during 2001–2017. Therefore, we are confident that the sampling was representative to our study area given that we found 802 patches in the same time period, that is, the sample consisted in around 10 % patches. It is noted, however, that our visual analysis mostly sampled big patches that died off because those were the ones that we could be sure that were bamboo die-off. The high detection accuracy of bamboo die-off events also highlights the quality of the MODIS (MAIAC) data, which are suitable for bamboo-dominated forests' mapping. The MAIAC algorithm improves the accuracy of cloud detection,

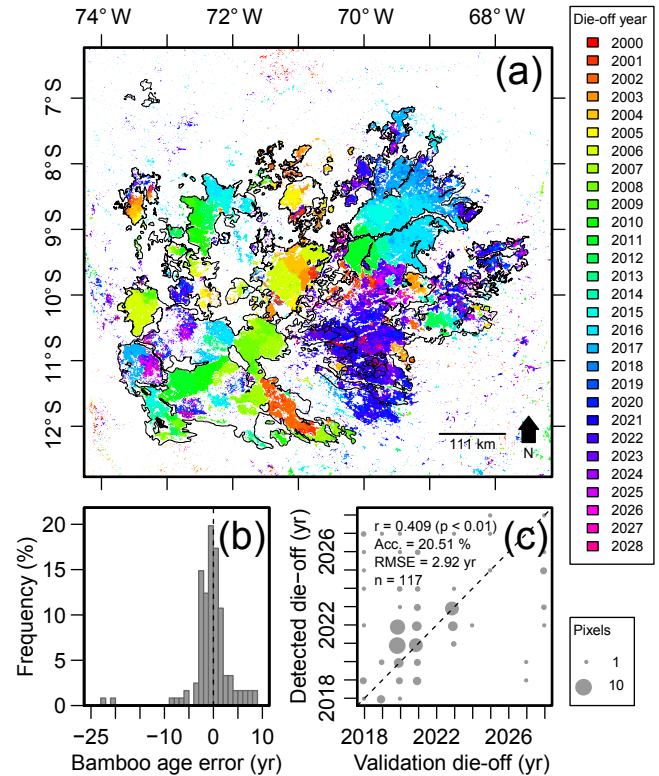


Figure 9. MODIS bamboo die-off prediction map from 2000 to 2028 using the empirical curves of the near-infrared 1 (NIR-1) reflectance as a function of bamboo cohort age (a). Validation between predicted die-off (2017–2028) and visual interpreted die-off from the previous life cycle in Landsat false-color composites (1985–2000) (c) and residuals distribution (a). The dashed line represents the 1 : 1 line in (c) and an age residual of 0 in (b). The size of circles is related to the number of pixels that hit the same observed/estimate die-off year.

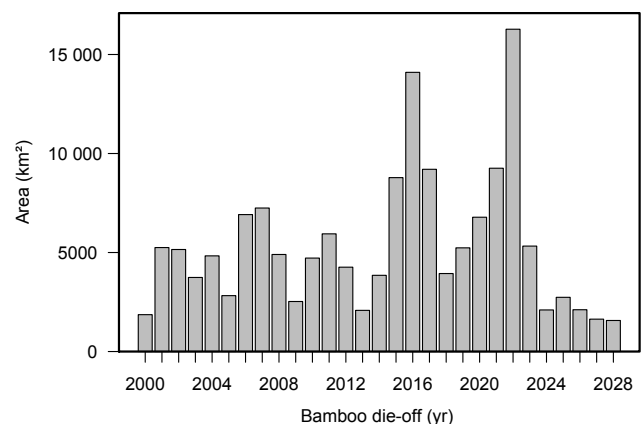


Figure 10. Distribution of predicted bamboo die-off area per year between 2000 and 2028 from MODIS NIR-1.

aerosol retrieval and atmospheric correction compared to the standard MODIS product processing (Hilker et al., 2014).

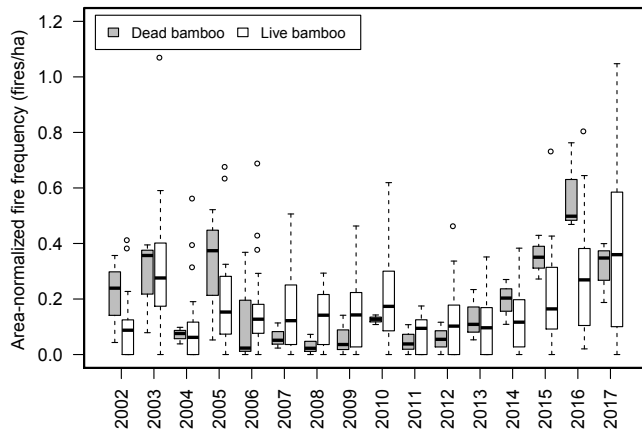


Figure 11. Area-normalized MODIS fire frequency during 2002–2017. Gray boxes represent fire in dead bamboo (28, 0 and 1 years) and white boxes represent fire in live bamboo (2 to 27 years).

Combined with the appropriate normalization for sun-sensor-target geometry using BRDF modeling, the MAIAC contributed to minimize interannual artifacts in the time series for an accurate detection.

4.3 Spatial distribution of bamboo-dominated forests

A total of 155 159 km² (15.5 million ha) of bamboo-dominated forests was mapped in the southwestern Amazon by combining the automatic detection of dead and live bamboo (Fig. 6). Most of the detected areas (72.5 %) were located inside the 16.5 million ha of the bamboo-dominated forests mapped by Carvalho et al. (2013), although covering only 68.8 % of the previous detected areas. This difference was partially due to the increased land cover change in the region post-2010 – the period when Carvalho et al. (2013) performed their analysis, and areas for which our method did not detect bamboo-dominated forests. Despite the differences, we detected clusters of pixels that were very likely bamboo-dominated patches outside of the previously mapped areas (e.g., 11.5° S, 70° W, and 13° S, 71° W). These areas should be further investigated in the field to verify if they are indeed bamboo-dominated forests.

Compared to our results with 1 km spatial resolution, the map from Carvalho et al. (2013) (30 m spatial resolution) underestimated the bamboo-dominated forests in the order of 30 %. A possible explanation is that the authors considered live adult bamboo and used only two Landsat mosaic images 10 years apart from each other (1990 and 2000) for mapping, thus not observing part of the bamboos that were at a juvenile stage and hidden in the understory at that time. Another possibility is the limitation of visual interpretation and manual delineation of small bamboo patches. Our map was obtained on a per-pixel basis by assessing each pixel's spectral trajectory, thus reducing errors of omission by considering both

live and dead bamboo for mapping, and by using a longer time series (18 years) for the detection.

The potential limitations of our map include the coarser spatial resolution (1 km) when compared to the previous map (30 m). In addition, we likely underestimated the true bamboo distribution because of the previously discussed uncertainties in detecting juvenile bamboos, given the limited temporal coverage of the MODIS (MAIAC) time series. A more accurate mapping of bamboo spatial distribution would require that all bamboo died off during the time series (i.e., requiring at least 28 years of data). Currently, the only dataset that has such temporal coverage comes from the Landsat satellites with 47 years of data of variable spatial resolution (1972–2018) or 34 years of data of 30 m spatial resolution (1985–2018). The challenge in applying such detection with Landsat imagery is that it relies on the dataset acquisition of yearly time series of cloud- and aerosol-free images for the whole area and signal normalization between images.

4.4 Bamboo cohort age and reflectance variability

When reconstructing the spectral response of the bamboo-dominated forest as a function of cohort age (Fig. 7), we found that two spectral bands, the NIR-1 and NIR-2, followed our initial assumption of overall reflectance increase with bamboo cohort age and of sharp decrease at the time of die-off.

Between 1 and 12 years of cohort age, the NIR-1 reflectance did not show a continuous increase (Fig. 7), while it presented strong correlation ($r = 0.41$) with bamboo-free forest (Fig. 8). The NIR-2 reflectance, however, showed a slight monotonical increase (Fig. 7) with weak correlation ($r = 0.19$) to bamboo-free forest (Fig. 9). However, the accuracy on detecting juvenile bamboos was poor (Fig. 9). Thus, it is very difficult to identify the bamboo-dominated patches in this hidden juvenile age without identifying the prior die-off event, as reported in a previous study (Carvalho et al., 2013).

The NIR signal suddenly increased at 12–14 years of age, which we believe had two possible explanations. First, there was a change in the density of leafy bamboo branches in the upper forest canopy, where they are visible to the satellite. This is supported by the field observations of Smith and Nelson (2011), in which juvenile bamboo cohorts reach the upper forest canopy by 10 years of age and accelerate in growth due to increased access to solar radiance. They observed that bamboo density doubled (from 1000 to 2000 culms ha⁻¹) and basal area almost tripled (from 2.1 to 5 m² ha⁻¹) between 10 and 12 years of age. The second explanation could be an artifact of our unbalanced sampling for this set of cohort ages. The reflectance values collected for 12–15 years of cohort age were only available from the extremes of our time series (2000 and 2017) due to the 28-year life cycle of bamboo and the 18 years of MAIAC data availability.

From 14 to 27 years, a smooth steady increase only occurs in the NIR-1 signal until the synchronous cohort death, while the NIR-2 signal seems to have saturated at about 15 years of age, maintaining a constant signal of 0.3 reflectance until it drops steeply at cohort death. Thus, NIR-1 should present better results for predicting the bamboo age of live adult stands. Finally, the sharp decrease of NIR-1 and NIR-2 at 28–29 years explains why our bilinear model performed well in detecting the time of death. At the time of death, there is a high abundance of dead/dry bamboo branches in the canopy, which reflects a lower amount of NIR energy than leafy and photosynthetically active bamboo.

The increases in red reflectance at the die-off, as well as at 1 year of age (Fig. 7a), can also be related to the high abundance of dry bamboo with decreased leaf chlorophyll content and increased non-photosynthetic content. Dry, or dead, vegetation is non-photosynthetically active, and, thus, the incoming red energy near 672 nm is not absorbed by the plant's chlorophyll, that is, causing an increase in the red reflectance (Daughtry, 2000). The dry culms can take up a few years to decompose (Carvalho et al., 2013), which may explain the reason for still observing an increased red signal at 1 year of age.

The curves also showed a large spectral variability in bamboo-dominated forests with age, which very likely occurs due to different bamboo abundance and/or forest structure in the area, as well as the interannual variability in the signal. However, we were able to extract the annual changes in reflectance and predict bamboo ages with 2.92 and 4.25 years RMSE (Fig. 9) using NIR-1 and NIR-2, respectively. The data of each age class were merged from different year composites of the whole time series, thus incorporating the noise in interannual variability. Three factors contributing to such noise could be (i) the temporary formation of green leafy secondary forest, spectrally similar to adult bamboo, in large forest gaps left by the dead bamboo; (ii) the semideciduous nature of the trees that are mixed in with bamboo, in the seasonally drier parts of the bamboo range and (iii) the fact that the death of bamboo revealed suppressed trees below the bamboo canopy. Nevertheless, because our detection and prediction methods were not based on absolute reflectance values, but on the correlation between the time series and a reference, such as the bilinear model or the empirical curve, we do not believe that the large spectral variability should have a major impact on the detection/prediction.

4.5 Bamboo die-off prediction

By applying the empirical bamboo-age reflectance curves, we estimated the bamboo die-off year for all bamboo patches of the region, providing a detailed map of the age structure of bamboo-dominated forest (Fig. 9) and bamboo patch size description (Table 1). The estimated die-off events between 2000 and 2017 were similar to the ones detected using the bilinear model because of the abrupt spectral changes

with die-off. Regarding predictions between 2018 and 2028, the estimate of the exact die-off year was not so accurate (at best 20 % accuracy) because those bamboo patches were mainly at the juvenile stage during the MODIS (MAIAC) time series period and did not die. However, we believe that the predictions using the NIR-1 were at acceptable levels (RMSE = 2.92 years) when considering that (i) the Landsat validation points based on visual interpretation can have a deviation of 1 year; and (ii) we assumed that every bamboo cohort had the same life cycle length of 28 years, while we know that it can vary between 27 and 32 years (Carvalho et al., 2013). The validation dataset for the predictions (2017–2028) corresponded to 175 pixels in 35 bamboo patches and represented 4.5 % of the 778 bamboo patches predicted for the 2018–2028 time period.

We believe that knowing where and when the bamboo dies is important information for future studies of bamboo-dominated forest ecosystems, and the potential applications of the bamboo die-off year or age map are various. Since areas with dead bamboo are difficult to maintain trails and hinder the work of rubber trappers (Carvalho et al., 2013), it can be used in forest management planning in order to avoid areas where the die-off year occurred in the last 3 years and dry culms are still not decomposed, or to avoid areas with likely future die-off. It can also be used for public policy planning regarding food and human health security, for example, in bamboo forests in Southeast Asia, where bamboo reproductive events cause huge rodent invasion and proliferation that then damage nearby crop plantations (Fava and Colombo, 2017). It could also be used to explore broader scientific questions on the ecology of bamboo-dominated forests such as studies on maintenance/expansion of bamboo patches, flowering waves, cross-pollination between patches, fauna habitat dynamics and impacts on short- and long-term carbon dynamics.

4.6 Fire occurrence and bamboo

We could not support the bamboo–fire hypothesis from Keeley and Bond (1999) because fire occurred only in a small fraction of bamboo-dominated areas during the 16 years of fire analysis (Fig. 6), equivalent to 2371 km² of burnt area or 0.0955 % of the total bamboo area (155 159 km²) burning each year. In addition, the statistical tests comparing dead and live bamboo fire frequency showed that dead bamboo did not burn more than live bamboo (Fig. 11). Hence, we believe in other explanations for bamboo maintenance in the forest, such as bamboo itself being responsible for its maintenance in the forest due to the damage it causes in the trees while increasing tree mortality (Griscom and Ashton, 2003).

We also did not observe an overall increased fire probability over dead than live bamboo in non-drought years. However, our findings suggest that forests with recently dead bamboo exposed to severe drought are more susceptible to fire occurrence, as there were 45 % higher area-normalized

mean active fire detections in dead than live bamboo during severe drought years, such as 2005, 2010, 2015 and 2016. When considering the total fire occurrence, we did not observe an overall significant increase in fire occurrence during the 2005 and 2010 major droughts when compared to the other regular years (Brando et al., 2014). We believe that this is because we filtered the active fire occurring inside the bamboo-dominated areas and pixels with, theoretically, zero non-forested areas using the tree cover products (Hansen et al., 2013), thus excluding the areas of increased fire occurrence in 2005 and 2010 that were reported in the literature (Brando et al., 2014).

The fire occurrence beyond 2 km inside the forest was probably underestimated because the forest canopy can obscure fires that only occur on the understorey, and, thus, are not detected by the MODIS/Aqua satellite (Roy et al., 2008). In addition, the MODIS active fire detections should be treated as a lower bound of fire occurrence, as it underestimates fire occurrences in the order of 5 % for small fires with less than 0.09 km², or 10 % of MODIS spatial resolution, due to the coarse spatial resolution, high cloud cover and high viewing angles (> 15°) (Morissette et al., 2005). Nevertheless, we do not believe this might have an impact on rejecting the bamboo–fire hypothesis due to the minimal fraction of fire occurrences occurring over the large bamboo-dominated forests.

Large areas of bamboo die-off that burned occurred close to agricultural lands near the city of Sena Madureira in the state of Acre, Brazil, during 2015, 2016 and 2017. The combination of increased dry fuel material from bamboos and nearby ignition sources from land use might have contributed to this increased fire occurrence. This result supports the notion that bamboo die-off enhances fire probability by increasing the dry fuel material in the forest. As we observed in the red wavelength, the reflectance increase was probably associated with greater amounts of dry biomass or non-photosynthetic vegetation in the die-off year and up to 1 year of age (Fig. 7a).

The fire occurrences over bamboo-dominated forests were therefore associated with the proximity to ignition sources, as less than 1 % of forest fire events occurred more than 2 km away from non-forested areas. This was expected because fire depends on both fuel and ignition to occur. Thus, areas closer to deforested areas, roads and rivers would have higher probability to burn, as probably occurred in 2015, 2016 and 2017. The study of Kumar et al. (2014) found that 50 % of MODIS active fire detections were found within 1 km of roads and rivers, and 95 % of the active fires were found within 10 km of roads and rivers in the Brazilian Amazon. Fire is known to be associated with deforestation and land use practices in Amazonia such as slash-and-burn farming and land preparation, where people remove trees of economic interest and then set the areas on fire in order to clear the land and implement crop plantations or pasture (e.g., Roy et al., 2008). Thus, this reinforces a bamboo–human–fire associa-

tion through the increased land use and cover change. This association is slightly different than it was in pre-Columbian times (McMichael et al., 2014), where geoglyph builders could have used the bamboo die-off patches and fire as an easier way to clear the forest cover to build their monuments, but it should also favor increases in fire occurrence on the vicinities of bamboo-dominated areas, thus leading to potential bamboo expansion.

The higher fire probability in dead bamboo patches during drought events, along with the increasing human influence, can favor increases in bamboo abundance and expansion over time by assisting them in their competition with trees. A previous study showed that fire favored the *Guadua* bamboo expansion in the region because the bamboo individuals have faster responses to catastrophic disturbance such as fires than tree species (Smith and Nelson, 2011). Thus, when a fire occurs inside or close to a bamboo forest patch, it may favor the growth of bamboo seedlings – derived from the massive number of seeds that have been dispersed during the reproductive phase and prior to death – and the vegetative expansion of the adult bamboo.

Our findings regarding bamboo die-off year being associated with fire occurrence, mainly in drought years, might have implications for fire control policies, such as in the state of Acre in Brazil, where many bamboo-dominated areas occur near human settlements, and these extreme climate events occur within a 5-year interval in Amazonia. By knowing where and when the die-offs are occurring, public policies can be made to avoid fire ignition in such areas or prepare the fire brigades to attend to potential fires.

5 Conclusions

This study demonstrates that the NIR reflectance is more sensitive to the bamboo life cycle than the other spectral intervals and can be used to detect and map bamboo-dominated forests distribution, age structure and death. The automatic bamboo die-off detection achieved an accuracy above 79 % by assessing the point of maximum correlation between the NIR time series and a bilinear model of linearly increasing NIR with a sharp decrease at the end. After merging the die-off map with the live bamboo map, a total of 155 159 km² of bamboo-dominated forests was mapped in the region. It is noted, however, that this area was probably still underestimated due to the limited temporal coverage of the MODIS (MAIAC) time series restricted to the last 2 decades. The bamboo–fire hypothesis was not supported by our results because only a small fraction of bamboo areas burned during the analysis timescale. In general, bamboo did not show higher fire probability after the reproductive event and die-off, meaning that fire should not be the driver for bamboo dominance. Nonetheless, under severe droughts effects, forests with recently dead bamboo are more susceptible to fire than forests with live bamboo, being affected by 45 %

more fire occurrence. The fire in these areas is mostly associated with ignition sources from land use, suggesting a bamboo–human–fire association. The interaction of dead bamboos and ignition causes increased fire occurrence that may contribute to the maintenance of bamboo, burn adjacent forested areas and promote tree mortality, and ultimately the expansion of bamboo into adjacent areas.

Further research related to bamboo dynamics can use the bamboo die-off map that we produced to pinpoint the location of reproductive and die-off events in space and time in order to support studies of bamboo maintenance and colonization, wildfire dynamics, carbon assimilation in trees and bamboos, tree mortality, fauna/flora demography and species distribution, etc. The mapping approach can be applied with other remote sensing data, such as Landsat data with better spatial resolution and longer time series, and tested with different spectral bands and attributes to further improve the detection. It can also be applied in other areas around the world that have bamboo-dominated forests. Using this approach, one can evaluate the temporal dynamics of the reproductive events (e.g., spreading of flowering waves) and map the bamboo-dominated areas.

Data availability. The datasets supporting the results that are not already published are archived in an open-access database: <https://doi.org/10.5281/zenodo.1229425> (Dalagnol et al., 2018). This DOI contains the preprocessed input data MODIS (MAIAC) time series, bamboo-dominated forests spatial distribution map and bamboo die-off maps.

The Supplement related to this article is available online at: <https://doi.org/10.5194/bg-15-6087-2018-supplement>

Author contributions. RD, FHW and LEOCA designed the study. RD and FHW processed the data and performed the analysis. RD, FHW, LSG, BWN and LEOCA interpreted the results. RD and FHW wrote the manuscript with consultation from LSG, BWN and LEOCA. All authors provided critical feedback on the paper's discussion and improvement.

Competing interests. The authors declare that they have no conflict of interest.

Acknowledgements. Ricardo Dalagnol was supported by the São Paulo Research Foundation – FAPESP, Brazil, grants 2015/22987-7 and 2017/15257-8. Fabien Hubert Wagner was supported by the São Paulo Research Foundation – FAPESP, Brazil, grants 2015/50484-0 and 2016/17652-9. Luiz Aragão was supported by the Brazilian National Council for Scientific and Technological Development – CNPq, productivity grant 305054/2016-3. The

fundors had no role in study design, data collection and analysis, decision to publish or preparation of the manuscript. We thank NASA, and especially Yujie Wang and Alexei Lyapustin, for providing the freely available MODIS (MAIAC) daily dataset. We also thank Alexei Lyapustin and Oliver Phillips for insightful comments on early versions of the manuscript. Finally, we thank the editor and two anonymous referees whose helpful comments and suggestions helped improve and clarify this manuscript.

Edited by: Christopher Still

Reviewed by: two anonymous referees

References

- Aragão, L. E. O. C., Anderson, L. O., Fonseca, M. G., Rosan, T. M., Vedovato, L. B., Wagner, F. H., Silva, C. V., Silva Junior, C. H., Arai, E., Aguiar, A. P., Barlow, J., Berenguer, E., Deeter, M. N., Domingues, L. G., Gatti, L., Gloor, M., Malhi, Y., Marengo, J. A., Miller, J. B., Phillips, O. L., and Saatchi, S.: 21st Century drought-related fires counteract the decline of Amazon deforestation carbon emissions, *Nat. Commun.*, 9, 1–12, <https://doi.org/10.1038/s41467-017-02771-y>, 2018.
- Aragão, L. E. O. C., Malhi, Y., Roman-Cuesta, R. M., Saatchi, S., Anderson, L. O., and Shimabukuro, Y. E.: Spatial patterns and fire response of recent Amazonian droughts, *Geophys. Res. Lett.*, 34, 1–5, <https://doi.org/10.1029/2006GL028946>, 2007.
- Balée, W.: The culture of Amazonian forests, in: *Resource Management in Amazonia: Indigenous and Folk Strategies*, edited by: Posey, D. A. and Balée, W., New York Botanical Garden, New York, 1–21, 1989.
- Brando, P. M., Balch, J. K., Nepstad, D. C., Morton, D. C., Putz, F. E., Coe, M. T., Silvério, D., Macedo, M. N., Davidson, E. a., Nóbrega, C. C., Alencar, A., and Soares-Filho, B. S.: Abrupt increases in Amazonian tree mortality due to drought–fire interactions, *P. Natl. Acad. Sci. USA*, 111, 6347–52, <https://doi.org/10.1073/pnas.1305499111>, 2014.
- Carvalho, A. L., Nelson, B. W., Bianchini, M. C., Plagnol, D., Kuplich, T. M., and Daly, D. C.: Bamboo-Dominated Forests of the Southwest Amazon: Detection, Spatial Extent, Life Cycle Length and Flowering Waves, *PLoS ONE*, 8, 1–13, <https://doi.org/10.1371/journal.pone.0054852>, 2013.
- Castro, W., Salimon, C. I., Medeiros, H., Da Silva, I. B., and Silveira, M.: Bamboo abundance, edge effects, and tree mortality in a forest fragment in southwestern amazonia, *Sci. For.*, 41, 159–164, 2013.
- Cleveland, R. B., Cleveland, W. S., McRae, J. E., and Terpenning, I.: STL: A seasonal-trend decomposition procedure based on loess, *Journal of Official Statistics*, 6, 3–73, 1990.
- Dalagnol, R., Borma, L. S., Mateus, P., and Rodriguez, D. A.: Assessment of climate change impacts on water resources of the Purus Basin in the southwestern Amazon, *Acta Amazonica*, 47, 213–226, <https://doi.org/10.1590/1809-4392201601993>, 2017.
- Dalagnol, R., Wagner, F. H., Galvão, L. S., Nelson, B. W., and Aragão, L. E. O. C.: Life cycle of bamboo in the southwestern Amazon and its relation to fire events, (Version v2) [Data set], Zenodo, <https://doi.org/10.5281/zenodo.1229425>, last access: 17 October 2018.

- Daughtry, C.: Estimating Corn Leaf Chlorophyll Concentration from Leaf and Canopy Reflectance, *Remote Sens. Environ.*, 74, 229–239, [https://doi.org/10.1016/S0034-4257\(00\)00113-9](https://doi.org/10.1016/S0034-4257(00)00113-9), 2000.
- dos Santos, H. G., de Carvalho-Júnior, W., Dart, R. D. O., Áglio, M. L. D., de Sousa, J. S., Pares, J. G., Fontana, A., Martins, A. L. d. S., and Oliveira, A. P. d. O.: O novo mapa de solos do Brasil: legenda atualizada, Embrapa, p. 67, 2011.
- Fava, F. and Colombo, R.: Remote sensing-based assessment of the 2005–2011 bamboo reproductive event in the arakan mountain range and its relation with wildfires, *Remote Sens.*, 9, 1–14, <https://doi.org/10.3390/rs9010085>, 2017.
- Fernandez, C. and Steel, M. F. J.: On Bayesian Modeling of Fat Tails and Skewness, *J. Am. Stat. Assoc.*, 93, 359–371, 1998.
- Franklin, D. C., Prior, L. D., Hogarth, N. J., and McMahon, C. R.: Bamboo, fire and flood: Consequences of disturbance for the vegetative growth of a clumping, clonal plant, *Plant Ecol.*, 208, 319–332, <https://doi.org/10.1007/s11258-009-9709-x>, 2010.
- Gao, B. C.: NDWI – A normalized difference water index for remote sensing of vegetation liquid water from space, *Remote Sens. Environ.*, 58, 257–266, [https://doi.org/10.1016/S0034-4257\(96\)00067-3](https://doi.org/10.1016/S0034-4257(96)00067-3), 1996.
- Griscom, B. W. and Ashton, P. M. S.: Bamboo control of forest succession: *Guadua sarcocarpa* in Southeastern Peru, *Forest Ecol. Manag.*, 175, 445–454, [https://doi.org/10.1016/S0378-1127\(02\)00214-1](https://doi.org/10.1016/S0378-1127(02)00214-1), 2003.
- Hansen, M. C., Potapov, P. V., Moore, R., Hancher, M., Turubanova, S. A., Tyukavina, A., Thau, D., Stehman, S. V., Goetz, S. J., Loveland, T. R., Kommareddy, A., Egorov, A., Chini, L., Justice, C. O., and Townshend, J. R. G.: High-Resolution Global Maps of 21st-Century Forest Cover Change, *Science*, 342, 850–853, <https://doi.org/10.1126/science.1244693>, 2013.
- Hilker, T., Lyapustin, A. I., Tucker, C. J., Hall, F. G., Myrneni, R. B., Wang, Y., Bi, J., Mendes de Moura, Y., and Sellers, P. J.: Vegetation dynamics and rainfall sensitivity of the Amazon, *P. Natl. Acad. Sci. USA*, 111, 16041–16046, <https://doi.org/10.1073/pnas.1404870111>, 2014.
- IBGE: Mapa Temático – Mapa de Vegetação do Brasil, available at: ftp://geofp.ibge.gov.br/informacoes_ambientais/vegetacao/mapas/brasil/vegetacao.pdf (last access: 20 April 2018), 2006.
- Janzen, D. H.: Why bamboos take so long to flower, *Annu. Rev. Ecol. Syst.*, 7, 347–391, 1976.
- Johnson, M. O., Galbraith, D., Gloor, M., De Deurwaerder, H., Guimberteau, M., Rammig, A., Thonicke, K., Verbeeck, H., von Randow, C., Monteagudo, A., Phillips, O. L., Brienen, R. J. W., Feldpausch, T. R., Lopez Gonzalez, G., Fauset, S., Quesada, C. A., Christoffersen, B., Ciais, P., Sampaio, G., Kruijt, B., Meir, P., Moorcroft, P., Zhang, K., Alvarez-Davila, E., Alves de Oliveira, A., Amaral, I., Andrade, A., Aragão, L. E. O. C., Araujo-Murakami, A., Arets, E. J. M. M., Arroyo, L., Aymard, G. A., Baraloto, C., Barroso, J., Bonal, D., Boot, R., Camargo, J., Chave, J., Cogollo, A., Cornejo Valverde, F., Lola da Costa, A. C., Di Fiore, A., Ferreira, L., Higuchi, N., Honorio, E. N., Killeen, T. J., Laurance, S. G., Laurance, W. F., Licona, J., Lovejoy, T., Malhi, Y., Marimon, B., Marimon, B. H., Matos, D. C. L., Mendoza, C., Neill, D. A., Pardo, G., Perra-Claros, M., Pitman, N. C. A., Poorter, L., Prieto, A., Ramirez-Angulo, H., Roopsind, A., Rudas, A., Salomao, R. P., Silveira, M., Stropp, J., ter Steege, H., Terborgh, J., Thomas, R., Toledo, M., Torres-Lezama, A., van der Heijden, G. M. F., Vasquez, R., Guimarães Vieira, I. C., Vilanova, E., Vos, V. A., and Baker, T. R.: Variation in stem mortality rates determines patterns of above-ground biomass in Amazonian forests: implications for dynamic global vegetation models, *Glob. Change Biol.*, 22, 3996–4013, <https://doi.org/10.1111/gcb.13315>, 2016.
- Keeley, J. E. and Bond, W. J.: Mast Flowering and Semelparity in Bamboos: The Bamboo Fire Cycle Hypothesis, *Am. Nat.*, 154, 383–391, <https://doi.org/10.1086/303243>, 1999.
- Kratter, A. W.: Bamboo Specialization by Amazonian Birds, *Biotropica*, 29, 100–110, 1997.
- Kumar, S. S., Roy, D. P., Cochrane, M. A., Souza, C. M., Barber, C. P., and Boschetti, L.: A quantitative study of the proximity of satellite detected active fires to roads and rivers in the Brazilian tropical moist forest biome, *Int. J. Wildland Fire*, 23, 532–543, <https://doi.org/10.1071/WF13106>, 2014.
- Lewis, S. L., Brando, P. M., Phillips, O. L., van der Heijden, G. M. F., and Nepstad, D.: The 2010 Amazon drought, *Science (New York, NY)*, 331, p. 554, <https://doi.org/10.1126/science.1200807>, 2011.
- Lobovikov, M., Paudel, S., Piazza, M., Ren, H., and Wu, J.: World bamboo resources: A thematic study prepared in the framework of the Global Forest Resources, assessment 2005, *FAO Technical Papers*, 1–74, <http://www.fao.org/3/a-a1243e.pdf> (last access: 20 April 2018), 2007.
- Londoño, X. and Peterson, P. M.: *Guadua sacocarpa* (Poaceae: Bambuseae), a new species of Amazonian Bamboo with fleshy fruits, *Systematic Botany*, 16, 630–638, 1991.
- Lucht, W. and Lewis, P.: Theoretical noise sensitivity of BRDF and albedo retrieval from the EOS-MODIS and MISR sensors with respect to angular sampling, *Int. J. Remote Sens.*, 21, 81–98, <https://doi.org/10.1080/014311600210000>, 2000.
- Lyapustin, A. and Wang, Y.: MCD19A1 MODIS/Terra+Aqua Land Surface BRF Daily L2G Global 500 m, 1 km and 5 km SIN Grid V006 [Data set], NASA EOSDIS Land Processes DAAC, <https://doi.org/10.5067/MODIS/MCD19A1.006>, 2018.
- Lyapustin, A. I., Wang, Y., Laszlo, I., Hilker, T., Hall, G. F., Sellers, P. J., Tucker, C. J., and Korkin, S. V.: Multi-angle implementation of atmospheric correction for MODIS (MAIAC): 3. Atmospheric correction, *Remote Sens. Environ.*, 127, 385–393, <https://doi.org/10.1016/j.rse.2012.09.002>, 2012.
- McMichael, C. H., Bush, M. B., Silman, M. R., Piperno, D. R., Raczka, M., Lobato, L. C., Zimmerman, M., Hagen, S., and Palace, M.: Historical fire and bamboo dynamics in western Amazonia, *J. Biogeogr.*, 40, 299–309, <https://doi.org/10.1111/jbi.12002>, 2013.
- McMichael, C. H., Palace, M. W., and Golightly, M.: Bamboo-dominated forests and pre-Columbian earthwork formations in south-western Amazonia, *J. Biogeogr.*, 41, 1733–1745, <https://doi.org/10.1111/jbi.12325>, 2014.
- Medeiros, H., Castro, W., Salimon, C. I., da Silva, I. B., and Silveira, M.: Tree mortality, recruitment and growth in a bamboo dominated forest fragment in southwestern Amazonia, Brazil, *Biota Neotropica*, 13, 29–34, <https://doi.org/10.1590/S1676-06032013000200002>, 2013.
- Morisette, J. T., Giglio, L., Csiszar, I., Setzer, A., Schroeder, W., Morton, D., and Justice, C. O.: Validation of MODIS active fire

- detection products derived from two algorithms, *Earth Interact.*, 9, 1–25, <https://doi.org/10.1175/EI141.1>, 2005.
- Nelson, B. W.: Natural forest disturbance and change in the Brazilian Amazon, *Remote Sens. Rev.*, 10, 105–125, <https://doi.org/10.1080/02757259409532239>, 1994.
- Olivier, J., Otto, T., Roddaz, M., Antoine, P. O., Londoño, X., and Clark, L. G.: First macrofossil evidence of a pre-Holocene thorny bamboo cf. *Guadua* (Poaceae: Bambusoideae: Bambuseae: Guaduiniae) in south-western Amazonia (Madre de Dios – Peru), *Rev. Palaeobot. Palyno.*, 153, 1–7, <https://doi.org/10.1016/j.revpalbo.2008.06.001>, 2009.
- Phillips, O. L., Aragão, L. E. O. C., Lewis, S. L., Fisher, J. B., Lloyd, J., Lopez-Gonzalez, G., Malhi, Y., Monteagudo, A., Peacock, J., Quesada, C. a., van der Heijden, G., Almeida, S., Amaral, I., Arroyo, L., Aymard, G., Baker, T. R., Banki, O., Blanc, L., Bonal, D., Brando, P., Chave, J., de Oliveira, A. C. A., Cardozo, N. D., Czimczik, C. I., Feldpausch, T. R., Freitas, M. A., Gloor, E., Higuchi, N., Jimenez, E., Lloyd, G., Meir, P., Mendoza, C., Morel, A., Neill, D. a., Nepstad, D., Patino, S., Penuela, M. C., Prieto, A., Ramirez, F., Schwarz, M., Silva, J., Silveira, M., Thomas, A. S., Steege, H. T., Stropp, J., Vasquez, R., Zelazowski, P., Davila, E. A., Andelman, S., Andrade, A., Chao, K.-J., Erwin, T., Di Fiore, A., C., E. H., Keeling, H., Killeen, T. J., Laurance, W. F., Cruz, A. P., Pitman, N. C. a., Vargas, P. N., Ramirez-Angulo, H., Rudas, A., Salamao, R., Silva, N., Terborgh, J., and Torres-Lezama, A.: Drought Sensitivity of the Amazon Rainforest, *Science*, 323, 1344–1347, <https://doi.org/10.1126/science.1164033>, 2009.
- R Core Team: R: A Language and Environment for Statistical Computing, <https://www.r-project.org/> (last access: 20 April 2018), 2016.
- Rockwell, C. A., Kainer, K. A., D’Oliveira, M. V. N., Staudhammer, C. L., and Baraloto, C.: Logging in bamboo-dominated forests in southwestern Amazonia: Caveats and opportunities for small-holder forest management, *Forest Ecol. Manag.*, 315, 202–210, <https://doi.org/10.1016/j.foreco.2013.12.022>, 2014.
- Roy, D. P., Boschetti, L., Justice, C. O., and Ju, J.: The collection 5 MODIS burned area product - Global evaluation by comparison with the MODIS active fire product, *Remote Sens. Environ.*, 112, 3690–3707, <https://doi.org/10.1016/j.rse.2008.05.013>, 2008.
- Silveira, M.: A Floresta Aberta com Bambu No Sudoeste Da Amazônia: Padrões E Processos Em Múltiplas Escalas, Ph.D. thesis, Universidade de Brasília, 2001.
- Smith, M. and Nelson, B. W.: Fire favours expansion of bamboo-dominated forests in the south-west Amazon, *J. Trop. Ecol.*, 27, 59–64, <https://doi.org/10.1017/S026646741000057X>, 2011.
- Sombroek, W. G.: A reconnaissance of the soils of the Brazilian Amazon region, Centre for Agricultural Publication and Documentation, Wageningen, 1966.
- Steffen, M.: Comparison of different Methods for Univariate Time Series Imputation in R, Cologne University of Applied Science, 1–20, 2015.
- Trancoso, R., Carneiro Filho, A., Tomasella, J., Schiatti, J., Forsberg, B. R., and Miller, R. P.: Deforestation and conservation in major watersheds of the Brazilian Amazon, *Environ. Conserv.*, 36, 277–288, <https://doi.org/10.1017/S0376892909990373>, 2010.
- Wagner, F. H., Hérault, B., Rossi, V., Hilker, T., Maeda, E. E., Sanchez, A., Lyapustin, A. I., Galvão, L. S., Wang, Y., and Aragão, L. E. O. C.: Climate drivers of the Amazon forest greening, *PLoS ONE*, 12, 1–15, <https://doi.org/10.1371/journal.pone.0180932>, 2017.
- Watling, J., Iriarte, J., Mayle, F. E., Schaaf, D., Pessenda, L. C. R., Loader, N. J., Street-Perrott, F. A., Dickau, R. E., Damasceno, A., and Ranzi, A.: Impact of pre-Columbian “geoglyph” builders on Amazonian forests, *P. Natl. Acad. Sci. USA*, 114, 1868–1873, <https://doi.org/10.1073/pnas.1614359114>, 2017.