

Supplement of Biogeosciences, 16, 1563–1582, 2019  
<https://doi.org/10.5194/bg-16-1563-2019-supplement>  
© Author(s) 2019. This work is distributed under  
the Creative Commons Attribution 4.0 License.



*Supplement of*

## **Inputs and processes affecting the distribution of particulate iron in the North Atlantic along the GEOVIDE (GEOTRACES GA01) section**

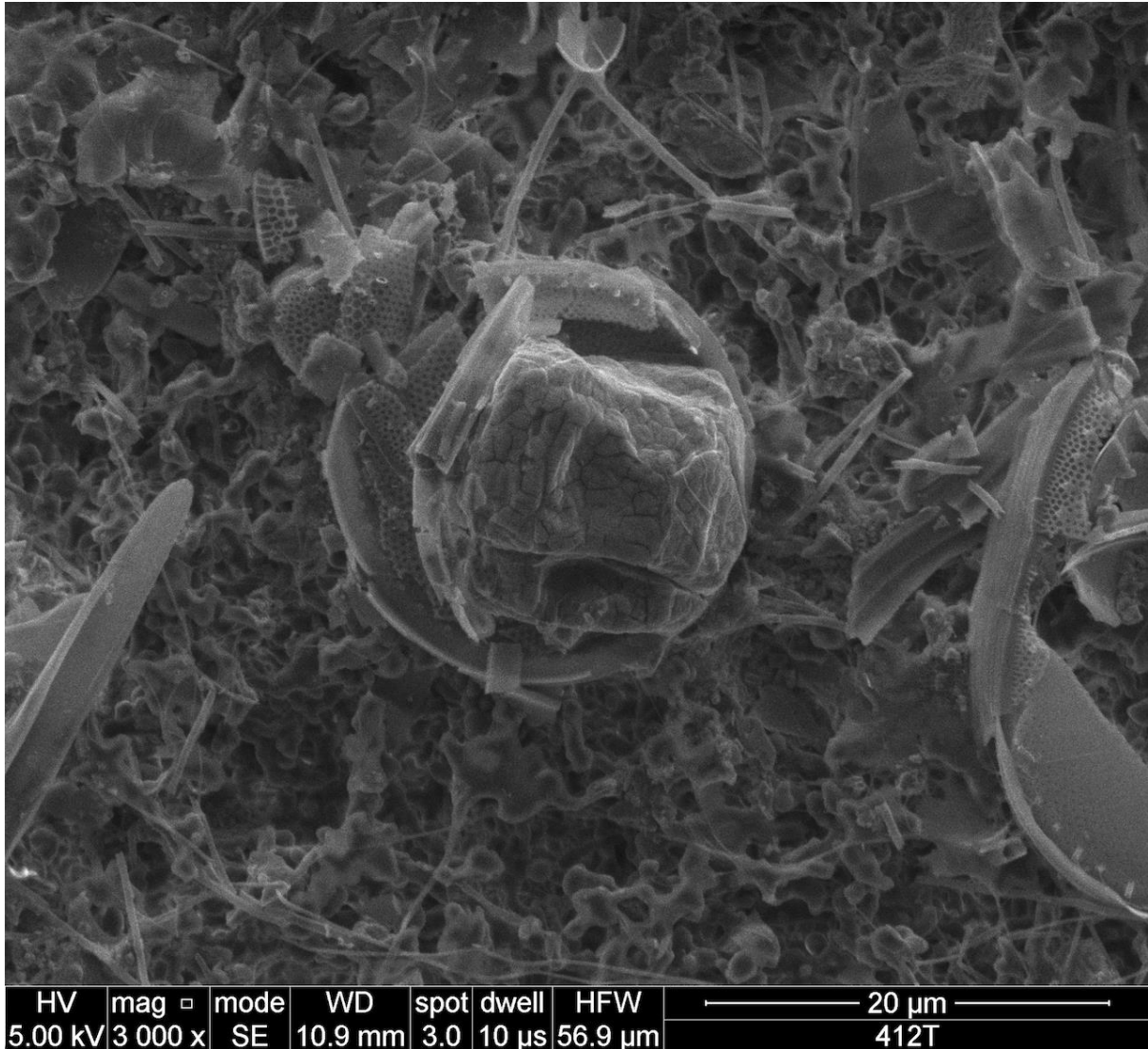
**Arthur Gourain et al.**

*Correspondence to:* H el ene Planquette ([helene.planquette@univ-brest.fr](mailto:helene.planquette@univ-brest.fr))

The copyright of individual parts of the supplement might differ from the CC BY 4.0 License.

## Supplementary material

Figure S1: Scanning Electron Microscope (SEM) image taken from a filter sampled at Station53, 165m depth.



**Table S1: PFe, PAI, PMn and PP concentrations (nmol L<sup>-1</sup>) at all stations during GEOVIDE.****Concentrations are provided in two size fractions (>5µm and 0.45-5µm). Total concentrations can be obtained by summing both size fractions**

Station [#]	Latitude [°N]	Longitude [°W]	Sampling		Bottom Depth [m]	Depth [m]	PFe <sub>large</sub>		PFe <sub>small</sub>		PAI <sub>large</sub>		PAI <sub>small</sub>		PMn <sub>large</sub>		PMn <sub>small</sub>		PP <sub>large</sub>		PP <sub>small</sub>								
			Date (dd/mm/yy)				[nmol L <sup>-1</sup> ]	SD	[nmol L <sup>-1</sup> ]	SD	[nmol L <sup>-1</sup> ]	SD	[nmol L <sup>-1</sup> ]	SD	[nmol L <sup>-1</sup> ]	SD	[nmol L <sup>-1</sup> ]	SD	[nmol L <sup>-1</sup> ]	SD	[nmol L <sup>-1</sup> ]	SD							
1	40.333	-10.036	20/05/2014	3590	3575	6.58 ± 0.72	0.72	0.06 ± 0.01	32.1 ± 3.5	3.5	0.29 ± 0.05	0.14 ± 0.02	bdl	bdl	bdl	bdl	bdl	bdl	bdl	bdl	bdl	bdl							
					3400	3.61 ± 0.37	bdl	18.4 ± 2.0	2.0	bdl	0.09 ± 0.01	bdl	bdl	bdl	bdl	bdl	bdl	bdl	bdl	bdl	bdl	bdl	bdl	bdl					
					3253	7.42 ± 0.82	bdl	bdl	35.9 ± 3.7	3.7	bdl	0.21 ± 0.02	bdl	0.64 ± 0.07	bdl	bdl	bdl	bdl	bdl	bdl	bdl	bdl	bdl	bdl	bdl				
					2999	7.78 ± 0.87	0.02 ± 0.01	38.4 ± 4.3	4.3	0.23 ± 0.05	0.14 ± 0.02	bdl	bdl	bdl	bdl	bdl	bdl	bdl	bdl	bdl	bdl	bdl	bdl	bdl	bdl				
					2501	3.94 ± 0.43	bdl	bdl	18.6 ± 1.9	1.9	bdl	0.12 ± 0.01	bdl	bdl	bdl	bdl	bdl	bdl	bdl	bdl	bdl	bdl	bdl	bdl	bdl				
					2001	3.55 ± 0.37	bdl	bdl	16.3 ± 1.7	1.7	bdl	0.13 ± 0.01	bdl	bdl	bdl	bdl	bdl	bdl	bdl	bdl	bdl	bdl	bdl	bdl	bdl				
					1599	3.28 ± 0.36	bdl	bdl	14.8 ± 1.6	1.6	bdl	0.12 ± 0.02	bdl	bdl	bdl	bdl	bdl	bdl	bdl	bdl	bdl	bdl	bdl	bdl	bdl				
					1400						bdl			0.00 ± 0.00		bdl	bdl	bdl	bdl	bdl	bdl	bdl	bdl	bdl	bdl				
					1198	2.24 ± 0.25	0.00 ± 0.00	9.66 ± 1.18	1.18	0.01 ± 0.00	0.13 ± 0.02	bdl	bdl	bdl	bdl	bdl	bdl	bdl	bdl	bdl	bdl	bdl	bdl	bdl	bdl				
					1001	4.27 ± 0.52	bdl	19.4 ± 2.3	2.3	bdl	0.21 ± 0.02	bdl	bdl	bdl	bdl	bdl	bdl	bdl	bdl	bdl	bdl	bdl	bdl	bdl	bdl				
					849	4.14 ± 0.45	bdl	19.8 ± 2.6	2.6	bdl	0.17 ± 0.02	bdl	bdl	bdl	bdl	bdl	bdl	bdl	bdl	bdl	bdl	bdl	bdl	bdl	bdl				
					700	4.15 ± 0.50	bdl	20.3 ± 2.6	2.6	bdl	0.15 ± 0.02	bdl	bdl	bdl	bdl	bdl	bdl	bdl	bdl	bdl	bdl	bdl	bdl	bdl	bdl				
					597	5.55 ± 0.62	0.01 ± 0.00	26.3 ± 3.3	3.3	bdl	0.15 ± 0.02	0.00 ± 0.00	6.11 ± 0.72	2.64 ± 0.31	bdl	bdl	bdl	bdl	bdl	bdl	bdl	bdl	bdl	bdl	bdl				
					499	3.67 ± 0.43		18.0 ± 2.1	2.1		0.08 ± 0.01																		
					400	4.74 ± 0.65	bdl	23.1 ± 2.9	2.9	bdl	0.16 ± 0.02	bdl	6.42 ± 0.82	bdl															
					300	8.36 ± 1.00	0.01 ± 0.00	39.9 ± 4.5	4.5	0.01 ± 0.01	0.24 ± 0.03	bdl	2.16 ± 0.26	0.09 ± 0.01															
					200	6.54 ± 0.83	bdl	30.7 ± 3.8	3.8	bdl	0.26 ± 0.03	bdl	4.07 ± 0.47	bdl															
					150	3.69 ± 0.40	0.00 ± 0.00	17.8 ± 2.0	2.0	bdl	0.29 ± 0.03	bdl	3.92 ± 0.43	0.53 ± 0.06															
					125	2.19 ± 0.25	bdl	9.92 ± 1.13	1.13	bdl	0.22 ± 0.02	bdl	4.47 ± 0.48	1.18 ± 0.14															
					100	2.20 ± 0.24	bdl	10.3 ± 1.1	1.1	bdl	0.20 ± 0.02	bdl	5.31 ± 0.61	1.46 ± 0.16															
					80	1.98 ± 0.22	0.03 ± 0.00	9.13 ± 1.04	1.04	bdl	0.16 ± 0.02	0.00 ± 0.00	10.5 ± 1.2	4.50 ± 0.47															
					60	1.11 ± 0.11	0.00 ± 0.00	5.31 ± 0.57	0.57	bdl	0.06 ± 0.01	0.00 ± 0.00	14.4 ± 1.5	5.07 ± 0.59															
					40	0.34 ± 0.04	0.03 ± 0.00	2.28 ± 0.23	0.23	bdl	0.01 ± 0.00	0.01 ± 0.00	19.5 ± 2.1	12.6 ± 1.4															
					20	0.77 ± 0.08	bdl	3.50 ± 0.36	0.36	bdl	0.02 ± 0.00	0.01 ± 0.00	28.9 ± 3.1	9.25 ± 0.98															
					2	40.333	-9.459	21/05/2014	153.5	139	304 ± 34	0.84 ± 0.30	1540 ± 163	4.31 ± 1.35	2.50 ± 0.29	0.01 ± 0.00	20.0 ± 2.1	1.01 ± 0.12											
										120	15.8 ± 1.6	0.03 ± 0.01	78.0 ± 8.3	8.3	0.18 ± 0.03	0.56 ± 0.07	0.00 ± 0.00	5.17 ± 0.58	1.97 ± 0.21										
100	6.26 ± 0.66	0.03 ± 0.00	30.5 ± 3.1	3.1						0.17 ± 0.02	0.32 ± 0.04	0.00 ± 0.00	5.12 ± 0.57	0.59 ± 0.06															
75	4.81 ± 0.50	0.05 ± 0.01	21.7 ± 2.2	2.2						0.03 ± 0.00	0.29 ± 0.03	0.00 ± 0.00	8.09 ± 0.89	3.57 ± 0.40															
50	1.79 ± 0.19	0.09 ± 0.02	7.84 ± 0.84	0.84						0.04 ± 0.01	0.20 ± 0.02	0.01 ± 0.00	14.1 ± 1.5	8.70 ± 0.94															
36	1.56 ± 0.17	0.07 ± 0.01	6.06 ± 0.67	0.67						0.23 ± 0.03	0.17 ± 0.02	0.01 ± 0.00	19.3 ± 2.0	8.97 ± 1.05															
20	1.83 ± 0.20	0.70 ± 0.08	6.65 ± 0.70	0.70						0.09 ± 0.01	0.12 ± 0.02	0.08 ± 0.01	21.0 ± 2.4	13.2 ± 1.4															
4	40.333	-9.767	21/05/2014	804						800	10.7 ± 1.3	0.03 ± 0.01	48.3 ± 6.0	6.0	0.23 ± 0.04	0.28 ± 0.03	0.00 ± 0.00	1.68 ± 0.20	0.26 ± 0.03										
										700	9.79 ± 1.22	0.03 ± 0.00	51.6 ± 5.7	5.7	1.36 ± 0.16	0.23 ± 0.02	bdl	0.97 ± 0.11	bdl										
										600	11.8 ± 1.8	0.02 ± 0.00	59.6 ± 8.6	8.6	0.38 ± 0.06	0.25 ± 0.03	bdl	1.15 ± 0.15	bdl										
					501	9.99 ± 1.23	0.01 ± 0.00	51.4 ± 5.9	5.9	0.09 ± 0.02	0.21 ± 0.03	bdl	2.03 ± 0.21	0.37 ± 0.04															
					400	2.77 ± 0.36	bdl	13.4 ± 2.0	2.0	0.15 ± 0.02	0.16 ± 0.02	bdl	1.59 ± 0.18	0.18 ± 0.02															
					300	2.37 ± 0.34	0.01 ± 0.00	11.7 ± 1.4	1.4	0.12 ± 0.02	0.17 ± 0.02	bdl	2.44 ± 0.29	1.08 ± 0.14															
					200	4.52 ± 0.71	0.01 ± 0.00	22.8 ± 3.0	3.0	0.11 ± 0.02	0.21 ± 0.02	bdl	2.83 ± 0.33	1.38 ± 0.15															
					149	3.07 ± 0.33	0.00 ± 0.00	15.6 ± 2.1	2.1	0.19 ± 0.02	0.19 ± 0.02	bdl	2.80 ± 0.34	1.05 ± 0.13															
					70	1.33 ± 0.17	0.02 ± 0.00	7.14 ± 0.85	0.85	0.74 ± 0.09	0.07 ± 0.01	bdl	6.39 ± 0.68	3.81 ± 0.46															
					38	0.57 ± 0.06	0.04 ± 0.01	3.08 ± 0.41	0.41	0.73 ± 0.09	0.02 ± 0.00	0.01 ± 0.00	12.2 ± 1.3	5.86 ± 0.71															
20		0.02 ± 0.00	0.34 ± 0.04	0.04	0.17 ± 0.02	bdl	bdl	bdl	bdl																				
11	40.333	-12.219	23/05/2014	5360	5347	1.90 ± 0.22	bdl	10.4 ± 1.4	1.4	0.29 ± 0.03	0.07 ± 0.01	bdl	bdl	bdl	bdl	bdl	bdl	bdl	bdl	bdl	bdl	bdl							
					5000	1.38 ± 0.19	0.00 ± 0.00	7.41 ± 0.80	0.80	0.39 ± 0.04	0.05 ± 0.01	bdl	bdl	bdl	bdl	bdl	bdl	bdl	bdl	bdl	bdl	bdl	bdl	bdl					
					4000	1.01 ± 0.13	bdl	4.83 ± 0.49	0.49	0.18 ± 0.03	0.04 ± 0.01	bdl	bdl	bdl	bdl	bdl	bdl	bdl	bdl	bdl	bdl	bdl	bdl	bdl	bdl				
					2998	2.25 ± 0.28	bdl	10.5 ± 1.1	1.1	0.27 ± 0.03	0.07 ± 0.01	bdl	bdl	bdl	bdl	bdl	bdl	bdl	bdl	bdl	bdl	bdl	bdl	bdl	bdl	bdl			
					2500	7.74 ± 0.90	bdl	33.9 ± 3.8	3.8	bdl	0.19 ± 0.03	bdl	bdl	bdl	bdl	bdl	bdl	bdl	bdl	bdl	bdl	bdl	bdl	bdl	bdl	bdl			
					2000	4.86 ± 0.55	bdl	21.8 ± 2.4	2.4	0.53 ± 0.06	0.15 ± 0.02	bdl	bdl	bdl	bdl	bdl	bdl	bdl	bdl	bdl	bdl	bdl	bdl	bdl	bdl	bdl			
					1599	1.70 ± 0.24	0.08 ± 0.01	7.99 ± 1.01	1.01	0.67 ± 0.09	0.07 ± 0.01	0.00 ± 0.00	bdl	bdl	bdl	bdl	bdl	bdl	bdl	bdl	bdl	bdl	bdl	bdl	bdl	bdl			
					1200	1.23 ± 0.14	0.01 ± 0.00	5.37 ± 0.64	0.64	0.25 ± 0.03	0.08 ± 0.01	bdl	bdl	bdl	bdl	bdl	bdl	bdl	bdl	bdl	bdl	bdl	bdl	bdl	bdl	bdl			
					1001	1.18 ± 0.15	bdl	4.88 ± 0.62	0.62	0.20 ± 0.02	0.09 ± 0.01	bdl	bdl	bdl	bdl	bdl	bdl	bdl	bdl	bdl	bdl	bdl	bdl	bdl	bdl	bdl			
					800	0.55 ± 0.06	bdl	2.48 ± 0.30	0.30	0.21 ± 0.03	0.07 ± 0.01	bdl	bdl	bdl	bdl	bdl	bdl	bdl	bdl	bdl	bdl	bdl	bdl	bdl	bdl	bdl			
					701	0.51 ± 0.06	bdl	2.45 ± 0.26	0.26	0.27 ± 0.03	0.08 ± 0.01	bdl	bdl	bdl	bdl	bdl	bdl	bdl	bdl	bdl	bdl	bdl	bdl	bdl	bdl	bdl			
					501	0.53 ± 0.08	bdl	2.32 ± 0.26	0.26	0.20 ± 0.03	0.11 ± 0.01	bdl	bdl	bdl	bdl	bdl	bdl	bdl	bdl	bdl	bdl	bdl	bdl	bdl	bdl	bdl			
					301	1.11 ± 0.13	0.01 ± 0.00	4.31 ± 0.49	0.49	0.16 ± 0.02	0.15 ± 0.02	bdl	1.50 ± 0.17	0.80 ± 0.09															
					201	0.26 ± 0.03	bdl	1.50 ± 0.19	0.19	0.08 ± 0.01	0.09 ± 0.01	bdl	0.88 ± 0.11	0.61 ± 0.08															
					101	0.25 ± 0.03	0.00 ± 0.00	1.33 ± 0.15	0.15	0.20 ± 0.02	0.07 ± 0.01	bdl	3.00 ± 0.36	1.00 ± 0.11															
80	0.25 ± 0.03	0.01 ± 0.00	1.57 ± 0.17	0.17	0.25 ± 0.03	0.05 ± 0.01	bdl	3.63 ± 0.42	1.27 ± 0.14																				
25	0.27 ± 0.04	0.02 ± 0.00	2.15 ± 0.27	0.27	0.93 ± 0.10	0.02 ± 0.00	0.02 ± 0.00	15.9 ± 1.8	15.7 ± 2.2																				
15	1.11 ± 0.16	0.03 ± 0.00	5.52 ± 0.80	0.80	0.89 ± 0.10	0.02 ± 0.00	0.02 ± 0.00	15.8 ± 2.3	17.2 ± 1.9																				
13	41.383	-13.888	25/05/2014	5455	5440	2.97 ± 0.33	0.21 ± 0.03	11.5 ± 1.3	1.3	0.55 ± 0.06	0.12 ± 0.01	0.01 ± 0.00	0.50 ± 0.06	0.03 ± 0.00															
					5000	1.28 ± 0.15	bdl	5.04 ± 0.52	0.52	bdl	0.07 ± 0.01	bdl	bdl	bdl	bdl	bdl	bdl	bdl	bdl	bdl	bdl	bdl	bdl	bdl	bdl				
					4000	0.95 ± 0.11	0.01 ± 0.00	3.74 ± 0.42	0.42	0.03 ± 0.01	0.05 ± 0.01	0.00 ± 0.00	0.33 ± 0.04	0.09 ± 0.01															
					2997	1.14 ± 0.13	0.01 ± 0.00	4.34 ± 0.46	0.46	0.02 ± 0.00	0.07 ± 0.01	0.00 ± 0.00	0.57 ± 0.08	0.07 ± 0.01															
					2500	1.92 ± 0.22	0.03 ± 0.00	7.																					

				4001	0.99 ± 0.11	0.00 ± 0.00	4.04 ± 0.50	0.20 ± 0.02	0.05 ± 0.01	bdl	bdl	bdl	
				3001	1.13 ± 0.13	bdl	4.75 ± 0.50	0.20 ± 0.02	0.08 ± 0.01	bdl	0.34 ± 0.04	bdl	
				2500	0.99 ± 0.13	bdl	3.83 ± 0.49	0.20 ± 0.02	0.08 ± 0.01	bdl	0.55 ± 0.06	bdl	
				2000	1.06 ± 0.12	0.00 ± 0.00	3.88 ± 0.52	0.17 ± 0.02	0.09 ± 0.01	bdl	0.35 ± 0.04	bdl	
				1800	1.38 ± 0.17	bdl	5.22 ± 0.59	0.27 ± 0.03	0.11 ± 0.01	0.00 ± 0.00	0.52 ± 0.06	0.03 ± 0.00	
				1600		0.00 ± 0.00		0.41 ± 0.05		bdl		bdl	
				1400	0.85 ± 0.12	0.01 ± 0.00	3.48 ± 0.37	0.23 ± 0.05	0.08 ± 0.01	0.00 ± 0.00	0.28 ± 0.04	bdl	
				1100	1.00 ± 0.12	0.00 ± 0.00	3.86 ± 0.44	0.14 ± 0.02	0.10 ± 0.01	bdl	0.64 ± 0.07	bdl	
				1000	1.12 ± 0.14	bdl	4.52 ± 0.57	0.17 ± 0.02	0.10 ± 0.01	bdl	0.95 ± 0.12	bdl	
				800	1.48 ± 0.18	0.08 ± 0.01	5.70 ± 0.62	0.50 ± 0.07	0.12 ± 0.02	bdl	1.06 ± 0.13	bdl	
				650	1.42 ± 0.18	0.00 ± 0.00	6.26 ± 0.78	0.32 ± 0.04	0.13 ± 0.01	bdl	1.49 ± 0.16	0.15 ± 0.02	
				400	0.74 ± 0.08	0.01 ± 0.00	3.64 ± 0.42	0.30 ± 0.03	0.17 ± 0.02	bdl	2.73 ± 0.31	0.99 ± 0.11	
				300	0.48 ± 0.06	bdl	2.70 ± 0.30	0.40 ± 0.04	0.20 ± 0.02	bdl	4.49 ± 0.53	1.60 ± 0.17	
				100	0.30 ± 0.03	bdl	1.77 ± 0.20	0.19 ± 0.02	0.09 ± 0.01	bdl	5.54 ± 0.67	0.44 ± 0.05	
				70.5	0.63 ± 0.08	0.03 ± 0.01	2.66 ± 0.35	0.50 ± 0.09	0.06 ± 0.01	0.03 ± 0.00	9.63 ± 1.27	6.60 ± 0.76	
				60.2	0.15 ± 0.02	0.02 ± 0.00	2.05 ± 0.23	0.43 ± 0.04	0.03 ± 0.01	0.02 ± 0.00	11.7 ± 1.5	8.59 ± 1.09	
				49.9	0.09 ± 0.01	0.03 ± 0.01	1.66 ± 0.23	0.91 ± 0.11	0.02 ± 0.00	0.02 ± 0.00	21.6 ± 2.9	14.7 ± 1.8	
				29.9	0.12 ± 0.02	0.07 ± 0.01	1.76 ± 0.21	1.06 ± 0.12	0.06 ± 0.04	0.03 ± 0.01	37.5 ± 4.6	24.0 ± 2.6	
				20.1	0.14 ± 0.02	0.04 ± 0.01	1.44 ± 0.18	0.90 ± 0.11	0.03 ± 0.00	0.02 ± 0.00	27.1 ± 4.0	19.5 ± 2.5	
17	43.780	-17.031	27/05/2014	4080	4062	1.14 ± 0.17	0.00 ± 0.00	4.93 ± 0.55	0.46 ± 0.05	0.12 ± 0.01	bdl	0.18 ± 0.02	bdl
					3500	0.66 ± 0.08	0.10 ± 0.01	2.85 ± 0.34	0.53 ± 0.07	0.07 ± 0.01	0.00 ± 0.00	bdl	bdl
					3000	0.65 ± 0.08	bdl	2.89 ± 0.34	0.34 ± 0.05	0.08 ± 0.01	bdl	bdl	bdl
					2500	0.83 ± 0.12	0.01 ± 0.00	3.38 ± 0.39	0.54 ± 0.06	0.09 ± 0.01	bdl	bdl	bdl
					2002	0.71 ± 0.08	0.04 ± 0.01	2.58 ± 0.28	0.64 ± 0.09	0.10 ± 0.01	bdl	0.21 ± 0.02	bdl
					1800	0.62 ± 0.09	0.01 ± 0.00	2.33 ± 0.32	0.80 ± 0.09	0.09 ± 0.01	bdl	bdl	bdl
					1600	0.81 ± 0.11	bdl	3.83 ± 0.43	0.28 ± 0.04	0.10 ± 0.01	bdl	0.56 ± 0.06	bdl
					1400	0.50 ± 0.05	bdl	2.05 ± 0.22	0.34 ± 0.04	0.08 ± 0.01	bdl	0.20 ± 0.02	bdl
					1200	0.54 ± 0.08	bdl	2.45 ± 0.25	0.31 ± 0.03	0.08 ± 0.01	bdl	0.08 ± 0.01	bdl
					1000	0.69 ± 0.08		2.72 ± 0.31		0.10 ± 0.01		0.83 ± 0.10	
					800	0.74 ± 0.09	bdl	3.27 ± 0.39	0.25 ± 0.03	0.11 ± 0.02	bdl	0.79 ± 0.12	bdl
					600	0.98 ± 0.13	0.03 ± 0.00	3.78 ± 0.42	0.34 ± 0.04	0.12 ± 0.01	bdl	1.68 ± 0.23	0.33 ± 0.04
					500	0.53 ± 0.06	bdl	2.77 ± 0.32	0.29 ± 0.03	0.11 ± 0.01	bdl	2.19 ± 0.23	0.54 ± 0.07
					400	0.63 ± 0.08	bdl	3.19 ± 0.34	0.33 ± 0.04	0.16 ± 0.02	bdl	2.90 ± 0.32	0.73 ± 0.09
					351	0.44 ± 0.05	bdl	2.51 ± 0.29	0.31 ± 0.04	0.16 ± 0.02	bdl	2.75 ± 0.29	0.95 ± 0.13
					200	0.25 ± 0.04	0.03 ± 0.00	1.64 ± 0.19	0.56 ± 0.06	0.07 ± 0.01	bdl	3.59 ± 0.47	0.18 ± 0.02
					100	0.11 ± 0.01	0.02 ± 0.00	1.33 ± 0.15	0.33 ± 0.04	0.04 ± 0.00	0.01 ± 0.00	5.52 ± 0.65	3.08 ± 0.34
					70	0.14 ± 0.01	0.02 ± 0.00	1.19 ± 0.12	0.58 ± 0.07	0.01 ± 0.00	0.01 ± 0.00	12.3 ± 1.4	7.13 ± 0.89
					60	0.24 ± 0.03	0.04 ± 0.01	1.80 ± 0.21	0.86 ± 0.09	0.02 ± 0.00	0.01 ± 0.00	20.4 ± 2.5	14.8 ± 1.8
					45	0.08 ± 0.01	0.02 ± 0.00	1.39 ± 0.17	0.71 ± 0.08	0.03 ± 0.00	0.03 ± 0.00	29.9 ± 3.4	23.7 ± 2.7
					30	0.07 ± 0.09	0.01 ± 0.00	2.55 ± 0.46	0.96 ± 0.12	0.04 ± 0.01	0.04 ± 0.01	42.0 ± 2.6	28.7 ± 3.0
					15	0.17 ± 0.02	0.02 ± 0.00	1.94 ± 0.22	1.01 ± 0.12	0.04 ± 0.01	0.04 ± 0.01	36.5 ± 4.2	29.6 ± 3.8
19	45.051	-18.505	28/05/2014	4640	4625	1.40 ± 0.00	bdl	5.43 ± 0.03	0.29 ± 0.28	0.13 ± 0.00	bdl	0.46 ± 0.04	bdl
					3999	0.70 ± 0.00	0.01 ± 0.09	2.61 ± 0.03	0.28 ± 0.29	0.07 ± 0.00	bdl	bdl	bdl
					3000	0.71 ± 0.01	bdl	2.54 ± 0.29	0.33 ± 0.04	0.08 ± 0.01	bdl	0.04 ± 5.36	bdl
					2500	0.52 ± 0.06	0.00 ± 0.00	1.84 ± 0.21	0.19 ± 0.02	0.07 ± 0.01	bdl	0.02 ± 0.00	bdl
					2000		bdl		0.26 ± 0.04		0.00 ± 0.00		bdl
					1800	0.75 ± 0.08	bdl	2.76 ± 0.32	0.22 ± 0.03	0.11 ± 0.01	bdl	0.30 ± 0.03	bdl
					1601	0.59 ± 0.07	bdl	2.11 ± 0.28	0.29 ± 0.03	0.10 ± 0.02	bdl	0.26 ± 0.03	bdl
					1402	0.56 ± 0.07	bdl	2.06 ± 0.28	0.16 ± 0.02	0.09 ± 0.01	bdl	0.50 ± 0.06	bdl
					1200	0.53 ± 0.09	bdl	2.29 ± 0.27	0.26 ± 0.03	0.08 ± 0.01	bdl	0.38 ± 0.05	bdl
					1000	0.62 ± 0.08	bdl	2.45 ± 0.27	0.18 ± 0.02	0.10 ± 0.01	bdl	3.16 ± 0.35	0.25 ± 0.03
					800	0.57 ± 0.06	0.00 ± 0.00	2.02 ± 0.21	0.24 ± 0.03	0.12 ± 0.02	bdl	1.19 ± 0.15	bdl
					600	0.27 ± 0.04	bdl	1.31 ± 0.16	0.04 ± 0.00	0.12 ± 0.01	bdl	1.18 ± 0.16	0.31 ± 0.04
					500	0.36 ± 0.04	0.01 ± 0.00	2.05 ± 0.27	0.04 ± 0.00	0.12 ± 0.02	bdl	2.64 ± 0.37	0.93 ± 0.14
					401	0.39 ± 0.07	0.01 ± 0.00	1.67 ± 0.21	0.08 ± 0.01	0.10 ± 0.02	bdl	3.00 ± 0.39	0.92 ± 0.12
					300	0.23 ± 0.03	0.00 ± 0.00	1.18 ± 0.13	0.06 ± 0.01	0.08 ± 0.01	bdl	1.96 ± 0.27	1.15 ± 0.17
					201	0.22 ± 0.03	1.08 ± 0.14	1.49 ± 0.19	0.04 ± 0.00	0.09 ± 0.01	0.00 ± 0.00	4.46 ± 0.46	2.40 ± 0.30
					100	0.31 ± 0.04	0.01 ± 0.00	1.57 ± 0.22	0.04 ± 0.00	0.08 ± 0.01	0.00 ± 0.00	5.36 ± 0.71	2.90 ± 0.37
					50	0.11 ± 0.02	0.02 ± 0.00	0.88 ± 0.15	0.11 ± 0.01	0.02 ± 0.00	0.02 ± 0.00	20.7 ± 2.4	14.9 ± 2.0
					40	0.04 ± 0.00	0.01 ± 0.00	0.56 ± 0.07	0.16 ± 0.02	0.01 ± 0.00	0.02 ± 0.00	18.2 ± 2.5	18.8 ± 2.2
					30	0.05 ± 0.01	0.02 ± 0.00	0.77 ± 0.09	0.12 ± 0.01	0.02 ± 0.00	0.02 ± 0.00	22.5 ± 3.4	19.8 ± 2.5
					20	0.03 ± 0.00	0.01 ± 0.00	0.76 ± 0.08	0.18 ± 0.02	0.02 ± 0.00	0.02 ± 0.00	26.5 ± 3.0	17.6 ± 2.1
21	46.544	-19.672	01/06/2014	4607	4592	2.44 ± 0.27	0.01 ± 0.00	8.89 ± 0.94	0.02 ± 0.00	0.19 ± 0.02	0.00 ± 0.00	0.57 ± 0.07	bdl
					4499	2.47 ± 0.31	0.02 ± 0.00	8.67 ± 0.94	0.03 ± 0.01	0.19 ± 0.02	0.00 ± 0.00	0.63 ± 0.08	bdl
					3500	0.78 ± 0.08	0.02 ± 0.00	2.55 ± 0.27	0.05 ± 0.01	0.10 ± 0.01	0.00 ± 0.00	0.40 ± 0.05	0.03 ± 0.00
					2999	0.84 ± 0.09	0.01 ± 0.00	2.19 ± 0.22	0.02 ± 0.00	0.12 ± 0.01	0.00 ± 0.00	0.76 ± 0.09	0.16 ± 0.02
					2800	1.13 ± 0.12	0.01 ± 0.00	2.78 ± 0.31	0.07 ± 0.01	0.13 ± 0.01	0.00 ± 0.00	0.92 ± 0.10	0.14 ± 0.01
					2299	0.84 ± 0.10	0.01 ± 0.00	2.22 ± 0.23	bdl	0.13 ± 0.01	0.00 ± 0.00	1.13 ± 0.14	0.41 ± 0.05
					2001	0.78 ± 0.10	0.00 ± 0.00	2.10 ± 0.24	bdl	0.13 ± 0.02	0.00 ± 0.00	1.17 ± 0.15	0.51 ± 0.06
					1501	0.80 ± 0.08	0.01 ± 0.00	2.23 ± 0.24	0.02 ± 0.00	0.11 ± 0.02	0.00 ± 0.00	2.03 ± 0.24	0.27 ± 0.04
					1250	0.68 ± 0.08	0.01 ± 0.00	2.31 ± 0.26	0.01 ± 0.00	0.12 ± 0.01	0.00 ± 0.00	1.40 ± 0.17	0.47 ± 0.06
					1000	0.59 ± 0.07	0.01 ± 0.00	2.10 ± 0.22	0.00 ± 0.00	0.12 ± 0.01	0.00 ± 0.00	1.14 ± 0.13	0.76 ± 0.09
					799	0.61 ± 0.07	0.00 ± 0.00	2.33 ± 0.25	bdl	0.15 ± 0.02	0.00 ± 0.00	2.02 ± 0.22	0.73 ± 0.08
					700	0.59 ± 0.07	0.01 ± 0.00	2.42 ± 0.26	0.01 ± 0.00	0.14 ± 0.02	0.00 ± 0.00	2.64 ± 0.29	1.17 ± 0.13
					600	0.37 ± 0.04	0.00 ± 0.00	1.96 ± 0.21	0.05 ± 0.01	0.11 ± 0.01	0.00 ± 0.00	2.96 ± 0.35	1.57 ± 0.22
					499	0.25 ± 0.03	0.00 ± 0.00	1.43 ± 0.15	bdl	0.08 ± 0.01	0.00 ± 0.00	3.52 ± 0.37	1.79 ± 0.23
					400	0.34 ± 0.04	0.01 ± 0.00	1.61 ± 0.18	0.19 ± 0.02	0.06 ± 0.01	0.00 ± 0.00	4.55 ± 0.51	2.31 ± 0.24
					300	0.34 ± 0.03	0.01 ± 0.00	1.76 ± 0.20	0.04 ± 0.01	0.14 ± 0.02	0.00 ± 0.00	4.53 ± 0.50	2.59 ± 0.28
					200	0.35 ± 0.04	0.01 ± 0.00	1.69 ± 0.18	0.01 ± 0.00	0.12 ± 0.01	0.00 ± 0.00	4.30 ± 0.46	1.58 ± 0.19
					100	0.17 ± 0.02	0.02 ± 0.00	2.02 ± 0.21	0.02 ± 0.00	0.02 ± 0.00	0.02 ± 0.00	11.3 ± 1.2	9.19 ± 0.99
					80	0.16 ± 0.02	0.04 ± 0.00	1.68 ± 0.18	0.01 ± 0.00	0.02 ± 0.00	0.02 ± 0.00	15.7 ± 1.7	10.2 ± 1.1
					50	0.15 ± 0.02	0.01 ± 0.00	1.39 ± 0.15	0.00 ± 0.00	0.02 ± 0.00	0.02 ± 0.00	19.1 ± 2.0	12.4 ± 1.3
					30	bdl	bdl	1.88 ± 0.21	bdl	0.06 ± 0.01	0.06 ± 0.01	70.6 ± 7.8	46.9 ± 4.8
					20	bdl	bdl	1.75 ± 0.20	bdl	0.09 ± 0.01	0.08 ± 0.01	108 ± 12	53.5 ± 5.7
23	48.039	-20.848	02/06/2014	4455	4000	1.52 ± 0.16	bdl	6.56 ± 0.89	0.09 ± 0.01	0.12 ± 0.02	bdl	bdl	bdl
					3500	1.56 ± 0.24	0.01 ± 0.00	8.43 ± 1.07	0.20 ± 0.02	0.14 ± 0.02	bdl	bdl	bdl
					3000	2.41 ± 0.27	bdl	13.40 ± 1.69	0.09 ± 0.01	0.22 ± 0.03	bdl	0.18 ± 0.02	bdl
					2300	1.12 ± 0.15	0.00 ± 0.00	2.11 ± 0					

					1200	0.76 ± 0.09	0.01 ± 0.00	1.77 ± 0.21	0.06 ± 0.01	0.11 ± 0.01	bdl	0.74 ± 0.08	0.07 ± 0.01
					800	0.44 ± 0.06	bdl	1.60 ± 0.21	0.01 ± 0.00	0.12 ± 0.02	bdl	1.09 ± 0.15	0.08 ± 0.01
					400	0.23 ± 0.03	0.00 ± 0.00	1.27 ± 0.15	0.02 ± 0.00	0.11 ± 0.02	bdl	2.26 ± 0.24	1.60 ± 0.19
					200	0.17 ± 0.02	0.00 ± 0.00	1.28 ± 0.14	0.03 ± 0.00	0.09 ± 0.01	bdl	2.97 ± 0.33	1.86 ± 0.22
					100	0.22 ± 0.03	0.02 ± 0.00	1.98 ± 0.32	0.11 ± 0.01	0.11 ± 0.01	bdl	6.76 ± 1.03	5.77 ± 0.63
					70	0.18 ± 0.02	0.01 ± 0.00	1.95 ± 0.21	0.07 ± 0.01	0.02 ± 0.00	0.03 ± 0.00	12.2 ± 1.6	11.2 ± 1.1
					60	0.12 ± 0.02	0.01 ± 0.00	2.07 ± 0.23	0.14 ± 0.02	0.02 ± 0.00	0.01 ± 0.00	12.6 ± 1.4	8.29 ± 0.91
					40	0.21 ± 0.03	0.11 ± 0.01	2.76 ± 0.32	1.02 ± 0.13	0.04 ± 0.01	0.02 ± 0.00	25.3 ± 3.1	9.40 ± 1.15
					30	0.16 ± 0.02	0.05 ± 0.01	2.72 ± 0.35	0.27 ± 0.03	0.06 ± 0.01	0.06 ± 0.01	39.9 ± 4.6	31.7 ± 3.2
					20	0.25 ± 0.04	0.04 ± 0.01	2.39 ± 0.27	0.16 ± 0.02	0.07 ± 0.01	0.05 ± 0.01	44.5 ± 5.4	29.8 ± 3.7
25	49.529	-22.017	03/06/2014	4168	4269	3.86 ± 0.47	0.02 ± 0.00	15.68 ± 1.82	0.21 ± 0.02	0.37 ± 0.04	bdl	0.76 ± 0.10	bdl
					4000	2.11 ± 0.25	bdl	7.81 ± 0.90	0.05 ± 0.01	0.23 ± 0.03	bdl	0.73 ± 0.08	bdl
					3500	1.20 ± 0.15	bdl	3.93 ± 0.47	0.04 ± 0.00	0.15 ± 0.02	bdl	0.33 ± 0.04	bdl
					3000	1.27 ± 0.15	bdl	3.75 ± 0.43	0.05 ± 0.01	0.16 ± 0.02	bdl	0.84 ± 0.11	bdl
					2600	1.13 ± 0.14	0.01 ± 0.00	2.52 ± 0.29	0.07 ± 0.01	0.13 ± 0.01	bdl	0.49 ± 0.07	bdl
					2000	0.72 ± 0.10	0.00 ± 0.00	2.70 ± 0.32	0.06 ± 0.01	0.11 ± 0.02	bdl	0.61 ± 0.08	bdl
					1800	0.83 ± 0.12	0.05 ± 0.01	2.38 ± 0.26	0.08 ± 0.01	0.13 ± 0.02	bdl	0.60 ± 0.07	bdl
					1600	0.82 ± 0.12	bdl	2.40 ± 0.32	0.06 ± 0.01	0.14 ± 0.02	bdl	0.91 ± 0.12	bdl
					1400	0.79 ± 0.13	bdl	2.33 ± 0.33	0.02 ± 0.00	0.14 ± 0.02	bdl	0.75 ± 0.10	bdl
					1200	0.61 ± 0.08	0.01 ± 0.00	2.00 ± 0.28	0.04 ± 0.01	0.13 ± 0.02	bdl	0.95 ± 0.11	bdl
					1000	0.65 ± 0.08	0.00 ± 0.00	2.09 ± 0.24	0.07 ± 0.01	0.16 ± 0.02	bdl	0.91 ± 0.11	0.08 ± 0.01
					800	0.51 ± 0.06	bdl	2.45 ± 0.26	0.02 ± 0.00	0.12 ± 0.02	bdl	1.43 ± 0.16	0.27 ± 0.03
					650	0.40 ± 0.06	0.00 ± 0.00	1.92 ± 0.24	0.05 ± 0.01	0.12 ± 0.01	bdl	1.86 ± 0.20	0.57 ± 0.08
					499	0.32 ± 0.06	0.02 ± 0.00	1.72 ± 0.23	0.25 ± 0.03	0.11 ± 0.02	0.00 ± 0.00	5.24 ± 0.64	1.81 ± 0.23
					349	0.02 ± 0.00	0.00 ± 0.00	0.66 ± 0.07	0.02 ± 0.00	0.03 ± 0.00	bdl	1.79 ± 0.24	0.39 ± 0.04
					200	0.13 ± 0.02	0.01 ± 0.00	0.99 ± 0.11	0.07 ± 0.01	0.04 ± 0.01	bdl	1.31 ± 0.15	0.61 ± 0.06
					100	0.17 ± 0.02	0.01 ± 0.00	1.60 ± 0.17	0.15 ± 0.02	0.03 ± 0.00	0.00 ± 0.00	5.23 ± 0.62	2.48 ± 0.39
					75	0.10 ± 0.01	0.06 ± 0.01	1.43 ± 0.18	0.13 ± 0.01	0.01 ± 0.00	0.01 ± 0.00	14.9 ± 1.8	8.38 ± 1.03
					50	0.11 ± 0.01	0.04 ± 0.01	1.40 ± 0.17	0.17 ± 0.02	0.01 ± 0.00	0.02 ± 0.00	13.8 ± 1.6	14.5 ± 1.7
					35	0.40 ± 0.05	0.01 ± 0.00	2.04 ± 0.22	0.06 ± 0.01	0.02 ± 0.00	0.02 ± 0.00	22.9 ± 2.6	20.0 ± 2.2
					25	0.22 ± 0.03	0.03 ± 0.00	1.68 ± 0.22	0.20 ± 0.03	0.08 ± 0.01	0.06 ± 0.01	62.4 ± 9.1	39.9 ± 4.6
					15	0.27 ± 0.03	0.08 ± 0.01	1.50 ± 0.18	0.14 ± 0.02	0.14 ± 0.02	0.03 ± 0.00	89.9 ± 10.9	21.2 ± 2.6
26	50.278	-22.605	04/06/2014	4207	4192	8.47 ± 1.04	0.01 ± 0.00	40.7 ± 4.2	0.07 ± 0.01	0.92 ± 0.10	0.00 ± 0.00	2.92 ± 0.31	0.11 ± 0.01
					4000	0.75 ± 0.09	0.02 ± 0.00	3.26 ± 0.33	0.10 ± 0.01	0.08 ± 0.01	0.00 ± 0.00	bdl	bdl
					3000	1.14 ± 0.12	bdl	3.46 ± 0.36	bdl	0.15 ± 0.02	0.00 ± 0.00	3.51 ± 0.39	0.34 ± 0.04
					2300	0.97 ± 0.40	0.00 ± 0.00	2.45 ± 0.90	0.04 ± 0.00	0.12 ± 0.02	0.00 ± 0.00	0.26 ± 0.09	bdl
					2000	0.92 ± 0.10	0.02 ± 0.00	2.76 ± 0.25	0.28 ± 0.03	0.13 ± 0.01	0.00 ± 0.00	0.13 ± 0.03	bdl
					1600	1.00 ± 0.09	0.02 ± 0.06	2.67 ± 0.31	bdl	0.14 ± 0.02	0.00 ± 0.01	0.41 ± 0.02	bdl
					1400	0.72 ± 0.08	bdl	1.95 ± 0.20	bdl	0.12 ± 0.01	0.00 ± 0.00	0.99 ± 0.11	bdl
					1200	0.74 ± 0.08	bdl	2.58 ± 0.27	bdl	0.14 ± 0.02	0.00 ± 0.00	0.97 ± 0.10	0.01 ± 0.00
					1000	0.61 ± 0.07	bdl	1.95 ± 0.20	bdl	0.13 ± 0.01	0.00 ± 0.00	1.34 ± 0.14	0.02 ± 0.00
					900	0.60 ± 0.07	0.00 ± 0.00	2.08 ± 0.22	0.03 ± 0.00	0.14 ± 0.02	0.00 ± 0.00	1.56 ± 0.17	0.42 ± 0.05
					750	0.70 ± 0.08	bdl	2.60 ± 0.28	bdl	0.16 ± 0.02	0.00 ± 0.00	1.46 ± 0.16	0.28 ± 0.03
					600	0.58 ± 0.06	bdl	2.53 ± 0.26	bdl	0.14 ± 0.02	0.00 ± 0.00	2.13 ± 0.24	bdl
					500	0.43 ± 0.05	bdl	1.91 ± 0.20	bdl	0.13 ± 0.01	0.00 ± 0.00	2.49 ± 0.26	1.05 ± 0.11
					400	0.33 ± 0.04	0.00 ± 0.00	1.32 ± 0.14	bdl	0.12 ± 0.01	0.00 ± 0.00	2.53 ± 0.31	1.11 ± 0.12
					300	0.26 ± 0.03	0.00 ± 0.00	1.38 ± 0.15	bdl	0.11 ± 0.01	0.00 ± 0.00	2.23 ± 0.24	0.71 ± 0.08
					200	0.36 ± 0.04	0.01 ± 0.00	1.57 ± 0.16	0.01 ± 0.00	0.07 ± 0.01	0.00 ± 0.00	3.42 ± 0.40	2.15 ± 0.24
					131	0.21 ± 0.02	bdl	0.40 ± 0.04	bdl	0.01 ± 0.00	0.01 ± 0.00	15.3 ± 1.7	8.65 ± 0.98
					99	0.12 ± 0.01	bdl	0.31 ± 0.04	bdl	0.00 ± 0.00	0.00 ± 0.00	6.42 ± 0.70	3.41 ± 0.37
					70	0.09 ± 0.01	bdl	0.41 ± 0.05	bdl	0.03 ± 0.00	bdl	0.22 ± 0.03	bdl
					50	0.16 ± 0.02	0.01 ± 0.00	0.99 ± 0.11	bdl	0.03 ± 0.00	0.02 ± 0.00	36.6 ± 3.9	23.7 ± 2.6
					35	0.23 ± 0.02	0.02 ± 0.00	1.44 ± 0.15	bdl	0.04 ± 0.01	0.04 ± 0.01	50.7 ± 5.4	37.8 ± 4.0
					20	0.35 ± 0.04	0.03 ± 0.01	1.47 ± 0.16	0.01 ± 0.00	0.06 ± 0.01	0.05 ± 0.01	55.2 ± 6.8	39.1 ± 4.2
29	53.020	-24.752	05/06/2014	3556	3584	10.3 ± 1.1	0.02 ± 0.01	42.5 ± 4.7	0.07 ± 0.02	1.31 ± 0.15	0.00 ± 0.00	3.01 ± 0.36	0.17 ± 0.02
					3000	2.03 ± 0.23	0.05 ± 0.01	4.75 ± 0.50	0.11 ± 0.01	0.20 ± 0.02	0.00 ± 0.00	1.01 ± 0.11	0.31 ± 0.04
					2500	1.26 ± 0.13	0.02 ± 0.00	2.88 ± 0.31	0.05 ± 0.01	0.15 ± 0.02	bdl	0.76 ± 0.09	0.24 ± 0.03
					2000	1.20 ± 0.14	0.01 ± 0.00	3.47 ± 0.35	0.01 ± 0.00	0.14 ± 0.01	bdl	1.04 ± 0.11	0.14 ± 0.02
					1800	1.29 ± 0.13	0.01 ± 0.00	4.36 ± 0.48	0.08 ± 0.01	0.15 ± 0.02	0.00 ± 0.00	0.81 ± 0.09	0.07 ± 0.01
					1600	1.49 ± 0.15	0.00 ± 0.00	4.00 ± 0.42	bdl	0.16 ± 0.02	0.00 ± 0.00	1.19 ± 0.13	0.14 ± 0.02
					1400	1.35 ± 0.15	0.02 ± 0.00	3.86 ± 0.42	0.00 ± 0.00	0.16 ± 0.02	0.00 ± 0.00	1.89 ± 0.21	0.29 ± 0.03
					1200	1.43 ± 0.16	0.00 ± 0.00	4.95 ± 0.52	0.01 ± 0.00	0.18 ± 0.02	bdl	1.34 ± 0.14	0.38 ± 0.04
					1100	1.21 ± 0.13	0.00 ± 0.00	3.64 ± 0.37	0.01 ± 0.00	0.18 ± 0.02	0.00 ± 0.00	1.91 ± 0.22	0.64 ± 0.08
					900	1.09 ± 0.12	0.01 ± 0.00	4.82 ± 0.52	0.08 ± 0.01	0.18 ± 0.02	0.00 ± 0.00	2.10 ± 0.24	0.56 ± 0.07
					800	1.15 ± 0.12	0.01 ± 0.00	3.74 ± 0.39	bdl	0.19 ± 0.02	0.00 ± 0.00	2.25 ± 0.24	0.60 ± 0.07
					600	0.93 ± 0.10	0.00 ± 0.00	2.92 ± 0.30	bdl	0.17 ± 0.02	0.00 ± 0.00	2.51 ± 0.26	0.77 ± 0.09
					500	0.63 ± 0.07	0.02 ± 0.00	2.64 ± 0.30	0.05 ± 0.01	0.14 ± 0.02	0.01 ± 0.00	2.97 ± 0.35	0.99 ± 0.11
					401	0.69 ± 0.08	0.00 ± 0.00	2.51 ± 0.27	bdl	0.17 ± 0.02	0.00 ± 0.00	3.72 ± 0.41	1.57 ± 0.16
					300	0.48 ± 0.05	0.02 ± 0.00	2.02 ± 0.21	bdl	0.09 ± 0.01	0.00 ± 0.00	6.50 ± 0.68	4.28 ± 0.47
					200	0.32 ± 0.03	0.01 ± 0.00	1.35 ± 0.14	0.01 ± 0.00	0.08 ± 0.01	bdl	1.94 ± 0.22	0.89 ± 0.10
					150	0.26 ± 0.03	0.03 ± 0.00	1.22 ± 0.13	0.04 ± 0.01	0.03 ± 0.00	0.00 ± 0.00	4.58 ± 0.50	2.52 ± 0.29
					100	0.21 ± 0.02	0.02 ± 0.00	1.05 ± 0.11	bdl	0.02 ± 0.00	0.01 ± 0.00	8.39 ± 0.93	6.82 ± 0.76
					75	0.22 ± 0.03	0.03 ± 0.00	0.61 ± 0.08	0.00 ± 0.00	0.02 ± 0.00	0.01 ± 0.00	12.5 ± 1.3	8.70 ± 1.05
					50	0.16 ± 0.02	0.02 ± 0.00	0.48 ± 0.05	bdl	0.02 ± 0.00	0.01 ± 0.00	16.2 ± 1.7	13.9 ± 1.4
					25	0.21 ± 0.02	0.02 ± 0.00	0.72 ± 0.08	0.01 ± 0.00	0.04 ± 0.00	0.02 ± 0.00	39.0 ± 4.2	20.8 ± 2.3
					15	0.34 ± 0.04	0.03 ± 0.00	0.87 ± 0.09	0.00 ± 0.00	0.04 ± 0.00	0.02 ± 0.00	43.2 ± 5.0	23.1 ± 2.5
32	55.515	-26.703	08/06/2014	3284	3271	40.5 ± 4.4	0.12 ± 0.06	100.9 ± 11.0	0.27 ± 0.13	2.96 ± 0.33	0.02 ± 0.00	11.7 ± 1.3	1.57 ± 0.18
					3230	29.2 ± 3.4	0.19 ± 0.08	68.6 ± 7.7	0.42 ± 0.16	2.04 ± 0.26	0.01 ± 0.00	7.10 ± 0.79	1.18 ± 0.13
					3000	6.10 ± 0.73	0.03 ± 0.01	12.4 ± 1.3	0.14 ± 0.03	0.48 ± 0.05	0.00 ± 0.00	2.32 ± 0.27	0.62 ± 0.08
					2500	1.16 ± 0.14	0.00 ± 0.00	2.77 ± 0.28	0.03 ± 0.00	0.14 ± 0.01	0.00 ± 0.00	0.87 ± 0.11	0.21 ± 0.02
					2000	1.51 ± 0.17	0.02 ± 0.00	3.73 ± 0.39	0.16 ± 0.02	0.16 ± 0.02	0.00 ± 0.00	1.22 ± 0.13	0.22 ± 0.03
					1750	1.37 ± 0.15	0.01 ± 0.01	3.39 ± 0.35	0.04 ± 0.03	0.17 ± 0.02	0.00 ± 0.00	1.35 ± 0.15	0.40 ± 0.05
					1500	1.21 ± 0.14	0.01 ± 0.00	3.36 ± 0.36	0.01 ± 0.00	0.15 ± 0.02	0.00 ± 0.00	1.84 ± 0.19	0.66 ± 0.08
					1250	1.04 ± 0.12	0.02 ± 0.00	3.05 ± 0.35	bdl	0.17 ± 0.02	0.00 ± 0.00	1.90 ± 0.21	0.69 ± 0.08
					1000	0.87 ± 0.0							

				100	0.24 ± 0.03	0.02 ± 0.00	1.07 ± 0.11	0.00 ± 0.00	0.02 ± 0.00	0.01 ± 0.00	14.8 ± 1.6	10.9 ± 1.1	
				60	0.15 ± 0.02	0.05 ± 0.01	0.48 ± 0.05	0.13 ± 0.01	0.02 ± 0.00	0.02 ± 0.00	19.1 ± 2.2	17.2 ± 1.8	
				50	0.02 ± 0.00	bdl	0.45 ± 0.05	bdl	0.01 ± 0.00	0.02 ± 0.00	21.0 ± 2.2	13.5 ± 1.5	
				40	bdl		bdl		bdl		13.5 ± 1.6		
				30	0.23 ± 0.03	0.08 ± 0.01	0.77 ± 0.08	0.06 ± 0.01	0.05 ± 0.01	0.05 ± 0.01	67.2 ± 7.3	62.0 ± 6.7	
				15	0.22 ± 0.02	0.02 ± 0.00	0.38 ± 0.05	bdl	0.02 ± 0.00	0.02 ± 0.00	32.1 ± 3.4	20.0 ± 2.2	
34	57.004	-27.879	09/06/2014	2751	2777	13.6 ± 1.4	0.02 ± 0.01	29.1 ± 3.2	0.01 ± 0.00	1.10 ± 0.12	0.00 ± 0.00	2.51 ± 0.26	0.58 ± 0.06
				2600	7.48 ± 0.78	0.01 ± 0.00	16.2 ± 1.7	bdl	0.66 ± 0.07	bdl	1.82 ± 0.19	0.57 ± 0.06	
				2600	5.44 ± 0.58	0.02 ± 0.01	11.4 ± 1.2	bdl	0.46 ± 0.05	bdl	0.06 ± 0.01	bdl	
				2400	2.70 ± 0.30	0.01 ± 0.00	5.02 ± 0.52	bdl	0.21 ± 0.02	bdl	1.21 ± 0.14	0.49 ± 0.06	
				2100	1.41 ± 0.15	bdl	3.25 ± 0.34	bdl	0.16 ± 0.02	bdl	1.18 ± 0.13	0.06 ± 0.01	
				1800	1.07 ± 0.11	0.01 ± 0.00	2.49 ± 0.26	0.04 ± 0.00	0.14 ± 0.02	bdl	1.17 ± 0.13	0.36 ± 0.04	
				1600	1.12 ± 0.13	bdl	2.78 ± 0.28	bdl	0.17 ± 0.02	bdl	1.64 ± 0.17	0.62 ± 0.07	
				1400	0.85 ± 0.09	bdl	2.20 ± 0.23	bdl	0.15 ± 0.02	bdl	1.88 ± 0.22	0.53 ± 0.07	
				1200	0.68 ± 0.08	bdl	1.79 ± 0.20	bdl	0.14 ± 0.02	bdl	1.35 ± 0.15	0.54 ± 0.06	
				1000	0.65 ± 0.07	0.00 ± 0.00	1.72 ± 0.18	bdl	0.14 ± 0.02	bdl	2.17 ± 0.24	0.70 ± 0.08	
				850	0.81 ± 0.09	0.01 ± 0.00	2.00 ± 0.21	0.00 ± 0.00	0.13 ± 0.01	bdl	2.51 ± 0.27	0.76 ± 0.08	
				700	0.64 ± 0.07	0.02 ± 0.00	2.52 ± 0.26	bdl	0.13 ± 0.01	bdl	3.06 ± 0.33	1.16 ± 0.12	
				600	0.75 ± 0.08		2.44 ± 0.25		0.12 ± 0.01		2.68 ± 0.28		
				450	0.84 ± 0.09	0.00 ± 0.00	2.73 ± 0.27	0.01 ± 0.00	0.13 ± 0.02	0.00 ± 0.00	4.93 ± 0.54	1.86 ± 0.21	
				380	0.64 ± 0.07	0.00 ± 0.00	2.34 ± 0.26	bdl	0.12 ± 0.01	bdl	4.49 ± 0.48	1.89 ± 0.20	
				300	0.42 ± 0.05	0.01 ± 0.00	1.68 ± 0.20	bdl	0.05 ± 0.01	bdl	4.91 ± 0.56	3.13 ± 0.33	
				200	0.41 ± 0.04	0.02 ± 0.00	1.69 ± 0.18	bdl	0.04 ± 0.00	bdl	4.61 ± 0.51	4.32 ± 0.48	
				100	0.22 ± 0.03	0.01 ± 0.00	0.94 ± 0.10	bdl	0.02 ± 0.00	0.00 ± 0.00	6.86 ± 0.73	4.19 ± 0.44	
				60	0.17 ± 0.02	0.01 ± 0.00	0.47 ± 0.05	0.00 ± 0.00	0.01 ± 0.00	0.01 ± 0.00	12.0 ± 1.2	10.1 ± 1.1	
				45	0.18 ± 0.02	0.01 ± 0.00	0.48 ± 0.05	bdl	0.02 ± 0.00	0.01 ± 0.00	18.6 ± 2.0	11.5 ± 1.3	
				28	0.21 ± 0.02	0.02 ± 0.00	0.51 ± 0.05	bdl	0.04 ± 0.00	0.02 ± 0.00	39.0 ± 4.1	30.3 ± 3.2	
				10	0.14 ± 0.02	0.01 ± 0.00	0.48 ± 0.05	bdl	0.05 ± 0.00	0.02 ± 0.00	43.3 ± 4.8	21.5 ± 2.3	
36	58.207	-29.725	10/06/2014	2224	2245	27.4 ± 3.1	0.06 ± 0.03	56.2 ± 6.4	0.11 ± 0.04	1.11 ± 0.12	0.00 ± 0.00	4.19 ± 0.51	0.26 ± 0.03
				1800	4.56 ± 0.49	0.01 ± 0.00	8.88 ± 0.95	0.00 ± 0.00	0.24 ± 0.03	bdl	1.14 ± 0.13	0.05 ± 0.01	
				1500	2.11 ± 0.23	0.00 ± 0.00	3.76 ± 0.40	bdl	0.13 ± 0.01	bdl	0.71 ± 0.08	0.05 ± 0.00	
				1220	0.91 ± 0.10	0.01 ± 0.00	1.96 ± 0.20	0.00 ± 0.00	0.14 ± 0.02	0.00 ± 0.00	0.83 ± 0.10	0.28 ± 0.03	
				850	0.83 ± 0.09	0.00 ± 0.00	1.74 ± 0.18	bdl	0.11 ± 0.01	bdl	1.43 ± 0.16	0.40 ± 0.04	
				500	1.99 ± 0.20	0.00 ± 0.00	4.18 ± 0.46	bdl	0.22 ± 0.03	bdl	4.55 ± 0.51	0.53 ± 0.05	
				250	0.67 ± 0.07	bdl	1.87 ± 0.20	bdl	0.03 ± 0.00	bdl	4.34 ± 0.52	0.16 ± 0.11	
				125	bdl	0.01 ± 0.00	0.15 ± 0.27	bdl	bdl	0.00 ± 0.00	0.02 ± 0.03	3.38 ± 0.36	
				70	0.31 ± 0.04	0.01 ± 0.00	1.20 ± 0.13	bdl	0.02 ± 0.00	0.01 ± 0.00	16.9 ± 1.8	7.86 ± 0.83	
				40	0.21 ± 0.02	0.02 ± 0.00	0.49 ± 0.05	bdl	0.05 ± 0.01	0.01 ± 0.00	43.9 ± 4.8	14.0 ± 1.4	
				20	0.20 ± 0.02	0.02 ± 0.00	0.49 ± 0.06	0.00 ± 0.00	0.03 ± 0.00	0.02 ± 0.00	35.2 ± 3.7	27.7 ± 3.1	
38	58.843	-31.266	10/06/2014	1365	1354	16.2 ± 2.1	0.04 ± 0.01	28.7 ± 3.7	0.05 ± 0.01	0.50 ± 0.05	0.00 ± 0.00	2.88 ± 0.36	0.81 ± 0.11
				1300	17.5 ± 1.9	0.05 ± 0.01	29.1 ± 3.2	0.07 ± 0.01	0.55 ± 0.06	0.00 ± 0.00	3.09 ± 0.37	1.17 ± 0.12	
				1163	14.7 ± 1.7	0.02 ± 0.00	25.2 ± 2.8	0.04 ± 0.01	0.46 ± 0.06	0.00 ± 0.00	3.53 ± 0.41	0.79 ± 0.09	
				1000	6.57 ± 0.67	0.05 ± 0.00	11.1 ± 1.2	0.06 ± 0.01	0.26 ± 0.03	0.00 ± 0.00	2.03 ± 0.23	0.44 ± 0.05	
				950	4.00 ± 0.47	0.02 ± 0.01	6.68 ± 0.74	0.03 ± 0.02	0.17 ± 0.02	0.00 ± 0.00	1.48 ± 0.16	0.42 ± 0.28	
				800	1.86 ± 0.78	0.03 ± 0.01	3.41 ± 1.04	0.41 ± 0.18	0.09 ± 0.04	0.00 ± 0.00	1.35 ± 0.42	0.72 ± 0.29	
				650	bdl	0.14 ± 0.08	0.50 ± 0.45	0.20 ± 0.08	bdl	0.00 ± 0.00	1.14 ± 0.29	2.18 ± 0.85	
				575	1.94 ± 0.23	0.08 ± 0.01	3.83 ± 0.44	0.16 ± 0.02	0.11 ± 0.01	0.00 ± 0.00	2.04 ± 0.24	1.57 ± 0.17	
				500	1.52 ± 0.17	0.07 ± 0.02	2.90 ± 0.41	0.13 ± 0.04	0.08 ± 0.01	0.00 ± 0.00	2.35 ± 0.31	1.50 ± 0.17	
				400	0.83 ± 0.12	0.03 ± 0.01	2.05 ± 0.29	0.04 ± 0.01	0.04 ± 0.01	0.00 ± 0.00	3.66 ± 0.47	1.51 ± 0.18	
				300	1.38 ± 0.19	0.08 ± 0.02	2.96 ± 0.37	0.17 ± 0.04	0.05 ± 0.01	0.00 ± 0.00	3.89 ± 0.52	2.09 ± 0.30	
				200	1.16 ± 0.16	0.12 ± 0.01	3.18 ± 0.38	0.30 ± 0.01	0.04 ± 0.01	0.00 ± 0.00	4.09 ± 0.45	1.85 ± 0.27	
				100	0.35 ± 0.04	0.22 ± 0.02	1.72 ± 0.19	0.03 ± 0.00	0.01 ± 0.00	0.01 ± 0.00	7.12 ± 0.80	5.12 ± 0.54	
				70	0.17 ± 0.02	0.03 ± 0.00	0.79 ± 0.09	0.05 ± 0.01	0.01 ± 0.00	0.01 ± 0.00	8.09 ± 0.93	8.21 ± 0.94	
				60	0.17 ± 0.02	0.03 ± 0.00	0.57 ± 0.06	0.04 ± 0.01	0.01 ± 0.00	0.02 ± 0.00	10.7 ± 1.2	13.7 ± 1.5	
				50	0.23 ± 0.03	0.02 ± 0.00	0.55 ± 0.06	bdl	0.01 ± 0.00	0.01 ± 0.00	13.8 ± 1.5	11.4 ± 1.3	
40	59.102	-33.828	11/06/2014	2320	2306	3.31 ± 0.22	0.01 ± 0.00	8.76 ± 0.32	0.04 ± 0.01	0.22 ± 0.02	bdl	0.90 ± 0.00	bdl
				2100	1.99 ± 0.01	0.02 ± 0.01	3.14 ± 0.04	bdl	0.15 ± 0.00	bdl	bdl	bdl	
				1600	1.62 ± 0.16	0.00 ± 0.00	2.76 ± 0.28	bdl	0.14 ± 0.01	bdl	0.56 ± 0.07	0.03 ± 0.00	
				1299	0.42 ± 0.04	0.04 ± 0.00	0.71 ± 0.07	0.05 ± 0.01	0.04 ± 0.00	0.00 ± 0.00	bdl	bdl	
				1000	1.39 ± 0.15	0.01 ± 0.00	2.34 ± 0.24	bdl	0.11 ± 0.01	bdl	1.28 ± 0.13	0.25 ± 0.03	
				600	0.92 ± 0.10	0.01 ± 0.00	1.72 ± 0.18	0.00 ± 0.00	0.08 ± 0.01	bdl	1.71 ± 0.17	0.85 ± 0.09	
				350	0.48 ± 0.05		1.28 ± 0.13		0.04 ± 0.00		2.92 ± 0.33		
				70	0.64 ± 0.07	0.04 ± 0.01	3.46 ± 0.37	0.09 ± 0.01	0.04 ± 0.00	0.02 ± 0.00	31.1 ± 3.4	21.0 ± 2.2	
				20	0.36 ± 0.04	0.05 ± 0.01	0.98 ± 0.10	bdl	0.06 ± 0.01	0.05 ± 0.01	74.6 ± 8.1	67.5 ± 7.0	
42	59.363	-36.396	12/06/2014	3150	3131	42.6 ± 4.8	0.38 ± 0.07	91.0 ± 10.8	0.78 ± 0.13	1.80 ± 0.19	0.01 ± 0.00	3.37 ± 0.39	0.36 ± 0.04
				3100	24.4 ± 2.9	0.07 ± 0.04	53.1 ± 5.9	0.13 ± 0.07	1.11 ± 0.12	0.00 ± 0.00	1.97 ± 0.21	0.22 ± 0.02	
				2900	2.59 ± 0.30	0.00 ± 0.00	5.72 ± 0.61	0.09 ± 0.01	0.18 ± 0.02	bdl	0.88 ± 0.10	0.10 ± 0.01	
				2500	1.75 ± 0.20	bdl	3.32 ± 0.34	bdl	0.15 ± 0.02	bdl	0.53 ± 0.05	bdl	
				2250	1.86 ± 0.21	0.01 ± 0.00	3.19 ± 0.36	bdl	0.15 ± 0.02	bdl	0.50 ± 0.05	0.16 ± 0.02	
				2000	1.82 ± 0.21	0.01 ± 0.00	3.12 ± 0.35	bdl	0.15 ± 0.02	bdl	0.66 ± 0.08	0.07 ± 0.01	
				1800	1.67 ± 0.18	0.00 ± 0.00	3.05 ± 0.32	bdl	0.14 ± 0.02	bdl	1.68 ± 0.18	0.41 ± 0.04	
				1600	2.06 ± 0.23	0.01 ± 0.00	3.78 ± 0.42	0.01 ± 0.00	0.16 ± 0.02	0.00 ± 0.00	1.14 ± 0.12	0.29 ± 0.03	
				1400	1.53 ± 0.17	0.00 ± 0.00	2.82 ± 0.30	bdl	0.13 ± 0.02	bdl	0.94 ± 0.10	0.12 ± 0.01	
				1200	1.02 ± 0.11	0.00 ± 0.00	2.11 ± 0.22	bdl	0.11 ± 0.01	0.00 ± 0.00	1.09 ± 0.13	0.53 ± 0.06	
				1050	1.28 ± 0.14	0.07 ± 0.01	2.93 ± 0.31	0.16 ± 0.02	0.11 ± 0.01	0.00 ± 0.00	1.09 ± 0.11	0.55 ± 0.06	
				900	1.18 ± 0.13	0.01 ± 0.00	2.54 ± 0.27	bdl	0.11 ± 0.01	0.00 ± 0.00	1.45 ± 0.16	0.90 ± 0.10	
				700	1.37 ± 0.14	0.02 ± 0.00	2.98 ± 0.31	0.06 ± 0.01	0.10 ± 0.01	0.00 ± 0.00	1.94 ± 0.21	2.48 ± 0.29	
				500	1.00 ± 0.11	0.00 ± 0.00	2.20 ± 0.23	bdl	0.08 ± 0.01	bdl	2.22 ± 0.25	1.33 ± 0.15	
				401	0.91 ± 0.10	0.01 ± 0.00	2.04 ± 0.22	bdl	0.08 ± 0.01	bdl	2.66 ± 0.28	1.70 ± 0.19	
				300	0.72 ± 0.08	0.01 ± 0.00	1.86 ± 0.20	bdl	0.06 ± 0.01	bdl	4.94 ± 0.52	2.11 ± 0.23	
				200	0.62 ± 0.07	0.01 ± 0.00	1.71 ± 0.18	0.02 ± 0.00	0.05 ± 0.01	0.00 ± 0.00	4.73 ± 0.52	2.27 ± 0.24	
				100	0.64 ± 0.07	0.02 ± 0.00	2.03 ± 0.22	0.01 ± 0.00	0.03 ± 0.00	0.00 ± 0.00	8.33 ± 0.86	5.99 ± 0.63	
				70	0.64 ± 0.07	0.03 ± 0.00	2.37 ± 0.25	0.00 ± 0.00	0.03 ± 0.00	0.02 ± 0.00	15.3 ± 1.6	13.4 ± 1.4	
				51	0.54 ± 0.06	0.02 ± 0.00	2.07 ± 0.21	bdl	0.04 ± 0.00	0.02 ± 0.00	27.0 ± 2.8	14.8 ± 1.6	
				20	0.64 ± 0.07	0.04 ± 0.00	3.20 ± 0.34	bdl	0.15 ± 0.02	0.15 ± 0.02	93.1 ± 9.5	83.2 ± 8.6	
44	59.623	-38.954	14/06/2014	2979	2964	43.4 ± 6.9	0.10 ± 0.00	93.7 ± 14.5	0.24 ± 0.01	1.56 ± 0.21	0.00 ± 0.00	4.05 ± 0.58	1.54 ± 0.11
				2900	27.0 ± 4.5	0.10 ± 0.01	56.5 ± 10.1	0.23 ± 0.03	1.01 ± 0.17	0.00 ± 0.00	2.42 ± 0.46	0.82 ± 0.18	
				2800	17.2 ± 2.8	0.04 ± 0.02	37.2 ± 6.3	0.12 ± 0.04	0.72 ±				

					1600	1.76 ± 0.22	0.01 ± 0.00	3.39 ± 0.38	0.05 ± 0.01	0.15 ± 0.02	0.00 ± 0.00	1.44 ± 0.23	0.93 ± 0.11
					1400	1.52 ± 0.18	0.02 ± 0.00	3.09 ± 0.37	0.06 ± 0.01	0.14 ± 0.02	0.00 ± 0.00	1.51 ± 0.16	1.09 ± 0.13
					1100	1.55 ± 0.17	0.03 ± 0.00	3.56 ± 0.33	0.09 ± 0.01	0.14 ± 0.02	0.00 ± 0.00	2.58 ± 0.16	1.59 ± 0.17
					900	± 0.17	0.02 ± 0.00	± 0.38	0.09 ± 0.01	± 0.02	0.00 ± 0.00	± 0.30	3.41 ± 0.39
					700	1.00 ± 0.11	0.02 ± 0.00	2.33 ± 0.24	0.08 ± 0.01	0.06 ± 0.01	0.00 ± 0.00	1.67 ± 0.18	1.06 ± 0.14
					600	1.26 ± 0.14	0.02 ± 0.00	3.13 ± 0.34	0.08 ± 0.01	0.08 ± 0.01	0.00 ± 0.00	2.29 ± 0.24	2.33 ± 0.26
					470	2.41 ± 0.30	0.04 ± 0.01	5.41 ± 0.60	0.04 ± 0.00	0.18 ± 0.02	0.00 ± 0.00	3.88 ± 0.40	2.12 ± 0.23
					300	1.23 ± 0.14	0.02 ± 0.00	2.85 ± 0.32	0.04 ± 0.00	0.07 ± 0.01	0.00 ± 0.00	3.55 ± 0.38	2.53 ± 0.29
					200	1.08 ± 0.12	0.02 ± 0.00	2.58 ± 0.28	0.05 ± 0.01	0.08 ± 0.01	0.00 ± 0.00	4.50 ± 0.59	2.41 ± 0.26
					160	1.75 ± 0.19	0.02 ± 0.00	2.39 ± 0.27	0.05 ± 0.01	0.07 ± 0.01	0.00 ± 0.00	4.80 ± 0.51	2.99 ± 0.37
					120	1.16 ± 0.13	0.01 ± 0.00	2.87 ± 0.31	0.02 ± 0.00	0.08 ± 0.01	0.00 ± 0.00	1.91 ± 0.22	1.18 ± 0.13
					50	0.60 ± 0.08	0.03 ± 0.00	2.35 ± 0.26	0.01 ± 0.00	0.02 ± 0.00	0.01 ± 0.00	18.4 ± 2.0	11.1 ± 1.2
					35	0.56 ± 0.06	0.08 ± 0.01	2.55 ± 0.27	0.01 ± 0.00	0.15 ± 0.02	0.12 ± 0.01	175 ± 18	122 ± 13
					30	0.24 ± 0.03	0.01 ± 0.00	0.98 ± 0.11	bdl	0.06 ± 0.01	0.05 ± 0.01	60.5 ± 6.7	41.3 ± 4.3
					20	0.88 ± 0.11	0.08 ± 0.01	3.38 ± 0.38	0.06 ± 0.01	0.22 ± 0.03	0.17 ± 0.02	235 ± 25	167 ± 18
49	59.773	-41.297	15/06/2014	2060	2052	19.5 ± 2.3	0.05 ± 0.01	41.5 ± 4.6	0.08 ± 0.02	0.72 ± 0.08	0.00 ± 0.00	2.29 ± 0.24	0.25 ± 0.03
					2000	19.7 ± 2.3	0.04 ± 0.00	42.5 ± 4.4	0.05 ± 0.01	0.73 ± 0.08	0.00 ± 0.00	2.13 ± 0.23	0.42 ± 0.04
					1900	9.69 ± 1.12	0.02 ± 0.00	20.7 ± 2.1	0.02 ± 0.00	0.43 ± 0.04	bdl	1.46 ± 0.15	0.21 ± 0.02
					1800	7.37 ± 0.77	0.01 ± 0.00	15.4 ± 1.6	bdl	0.34 ± 0.03	bdl	1.36 ± 0.14	0.19 ± 0.02
					1650	8.51 ± 0.88	0.05 ± 0.01	17.5 ± 1.9	0.41 ± 0.05	0.36 ± 0.04	0.00 ± 0.00	1.43 ± 0.16	0.26 ± 0.03
					1500	7.50 ± 0.82	0.01 ± 0.00	15.0 ± 1.5	0.01 ± 0.00	0.33 ± 0.03	bdl	1.38 ± 0.15	0.20 ± 0.02
					1250	6.52 ± 0.72	0.02 ± 0.01	12.8 ± 1.5	0.30 ± 0.04	0.29 ± 0.03	bdl	1.65 ± 0.19	0.52 ± 0.07
					1101	4.79 ± 0.56	0.01 ± 0.00	9.46 ± 1.04	bdl	0.22 ± 0.03	bdl	1.79 ± 0.20	0.41 ± 0.04
					1000	4.68 ± 0.52		9.18 ± 0.95		0.22 ± 0.02		1.92 ± 0.22	
					901	5.14 ± 0.56	0.01 ± 0.00	10.3 ± 1.1	bdl	0.23 ± 0.02	bdl	1.80 ± 0.19	0.47 ± 0.05
					801	4.11 ± 0.46	0.02 ± 0.00	8.17 ± 0.87	0.20 ± 0.03	0.20 ± 0.02	0.00 ± 0.00	1.81 ± 0.19	0.52 ± 0.06
					700	3.54 ± 0.37	0.01 ± 0.00	6.97 ± 0.72	0.17 ± 0.02	0.19 ± 0.02	bdl	1.58 ± 0.18	0.75 ± 0.08
					600	3.22 ± 0.33	0.01 ± 0.00	6.44 ± 0.66	0.00 ± 0.00	0.16 ± 0.02	0.00 ± 0.00	2.18 ± 0.26	0.73 ± 0.08
					550	4.29 ± 0.44	0.02 ± 0.01	8.62 ± 0.99	0.00 ± 0.00	0.19 ± 0.02	0.00 ± 0.00	3.43 ± 0.37	1.56 ± 0.16
					400	4.48 ± 0.50	0.02 ± 0.00	9.37 ± 1.00	0.01 ± 0.00	0.18 ± 0.02	0.00 ± 0.00	2.97 ± 0.31	1.88 ± 0.20
					300	3.83 ± 0.43	0.02 ± 0.00	8.40 ± 0.88	0.03 ± 0.00	0.13 ± 0.02	0.00 ± 0.00	4.85 ± 0.52	2.98 ± 0.31
					200	2.94 ± 0.31	0.02 ± 0.00	7.24 ± 0.82	0.00 ± 0.00	0.11 ± 0.01	0.00 ± 0.00	6.80 ± 0.75	4.31 ± 0.47
					102	1.11 ± 0.12	0.03 ± 0.00	4.19 ± 0.44	bdl	0.04 ± 0.00	0.01 ± 0.00	19.8 ± 2.1	15.3 ± 1.8
					80	0.94 ± 0.10	0.04 ± 0.01	3.62 ± 0.42	0.01 ± 0.00	0.04 ± 0.01	0.02 ± 0.00	22.1 ± 2.5	20.8 ± 2.3
					61	0.49 ± 0.05	0.02 ± 0.00	2.43 ± 0.25	bdl	0.07 ± 0.01	0.04 ± 0.00	49.8 ± 5.3	30.4 ± 3.3
					40	0.36 ± 0.35	0.04 ± 0.01	2.20 ± 1.25	bdl	0.08 ± 0.01	0.04 ± 0.01	70.1 ± 4.4	41.6 ± 4.6
					20	0.41 ± 0.04	0.04 ± 0.00	2.32 ± 0.25	bdl	0.09 ± 0.01	0.05 ± 0.01	117 ± 12	49.8 ± 5.5
53	59.899	-43.003	17/06/2014	180	165	21.5 ± 2.4	0.05 ± 0.01	72.9 ± 8.5	0.29 ± 0.03	0.62 ± 0.06	0.01 ± 0.00	5.47 ± 0.60	3.99 ± 0.44
					130	16.5 ± 1.9	0.04 ± 0.00	55.9 ± 6.2	0.16 ± 0.02	0.51 ± 0.06	0.00 ± 0.00	4.33 ± 0.46	2.52 ± 0.26
					100	22.1 ± 2.6	0.02 ± 0.00	70.8 ± 8.0	0.02 ± 0.00	0.77 ± 0.08	0.01 ± 0.00	8.75 ± 0.94	3.76 ± 0.41
					70	10.7 ± 1.4	0.02 ± 0.00	31.9 ± 4.2	0.03 ± 0.00	0.42 ± 0.04	0.02 ± 0.00	10.1 ± 1.1	7.74 ± 0.80
					50	9.42 ± 1.08	0.08 ± 0.01	32.2 ± 4.0	0.06 ± 0.01	0.36 ± 0.04	0.08 ± 0.01	38.5 ± 4.2	28.3 ± 2.9
					30	19.0 ± 2.2	0.14 ± 0.02	61.3 ± 7.1	0.15 ± 0.02	0.46 ± 0.05	0.13 ± 0.02	96.9 ± 10.1	63.9 ± 6.7
56	59.823	-42.399	18/06/2014	308	298	6.33 ± 0.03	0.26 ± 0.50	21.1 ± 0.1	0.85 ± 1.56	0.15 ± 0.00	0.01 ± 0.01	12.0 ± 0.6	5.77 ± 1.95
					248	4.28 ± 0.01	0.09 ± 0.47	14.3 ± 0.0	0.25 ± 1.66	0.12 ± 0.00	0.01 ± 0.02	18.2 ± 1.1	9.26 ± 3.29
					170	4.18 ± 0.01	0.06 ± 0.26	15.1 ± 0.0	bdl	0.13 ± 0.00	0.02 ± 0.01	31.0 ± 1.7	16.4 ± 3.3
					120	2.59 ± 0.04	0.04 ± 0.47	8.96 ± 0.25	0.00 ± 1.05	0.08 ± 0.01	0.02 ± 0.02	30.5 ± 7.6	20.0 ± 1.2
					60	3.42 ± 0.36	0.04 ± 0.01	11.5 ± 1.2	bdl	0.09 ± 0.01	0.01 ± 0.00	25.0 ± 2.6	12.5 ± 1.5
					40	5.49 ± 0.60	0.19 ± 0.02	17.9 ± 2.0	0.32 ± 0.03	0.14 ± 0.02	0.02 ± 0.00	30.7 ± 3.4	11.7 ± 1.3
					20	8.15 ± 0.85	0.06 ± 0.01	27.2 ± 2.9	0.12 ± 0.02	0.21 ± 0.02	0.01 ± 0.00	22.3 ± 2.4	11.8 ± 1.3
60	59.799	-42.003	17/06/2014	1752	1737	14.3 ± 1.5	0.14 ± 0.02	30.4 ± 3.4	0.36 ± 0.04	0.51 ± 0.05	0.01 ± 0.00	2.91 ± 0.37	1.37 ± 0.15
					1647	14.2 ± 2.1	0.05 ± 0.01	30.4 ± 3.6	bdl	0.34 ± 0.05	bdl	2.44 ± 0.29	1.48 ± 0.18
					1500	17.9 ± 1.9	0.02 ± 0.00	38.4 ± 4.0	bdl	0.41 ± 0.05	bdl	3.22 ± 0.37	1.24 ± 0.14
					1300	7.08 ± 0.76	0.01 ± 0.00	13.5 ± 1.4	bdl	0.22 ± 0.02	bdl	2.57 ± 0.30	1.37 ± 0.15
					1150	5.76 ± 0.66	0.04 ± 0.01	10.5 ± 1.2	bdl	0.17 ± 0.02	bdl	2.16 ± 0.23	1.38 ± 0.25
					950	1.43 ± 0.16	0.24 ± 0.03	1.90 ± 0.21	bdl	bdl	0.01 ± 0.00	1.57 ± 0.18	1.23 ± 0.14
					850	2.84 ± 0.31	bdl	4.88 ± 0.50	bdl	0.08 ± 0.01	bdl	3.16 ± 0.33	1.11 ± 0.12
					750	1.60 ± 0.16	0.02 ± 0.00	2.74 ± 0.28	bdl	0.03 ± 0.00	bdl	2.56 ± 0.28	1.46 ± 0.40
					650	2.19 ± 0.24	0.01 ± 0.00	3.72 ± 0.38	bdl	0.06 ± 0.01	bdl	2.75 ± 0.29	1.74 ± 0.18
					550	1.33 ± 0.14	0.02 ± 0.00	2.16 ± 0.22	bdl	bdl	bdl	1.60 ± 0.17	1.98 ± 0.23
					450	1.83 ± 0.20	0.01 ± 0.00	3.07 ± 0.36	bdl	0.02 ± 0.00	bdl	2.91 ± 0.30	2.15 ± 0.24
					350	3.02 ± 0.31	0.05 ± 0.01	5.60 ± 0.59	bdl	0.03 ± 0.00	bdl	4.36 ± 0.51	2.80 ± 0.30
					300	2.11 ± 0.22	0.01 ± 0.00	4.11 ± 0.42	bdl	bdl	bdl	4.95 ± 0.52	3.73 ± 0.40
					250	1.90 ± 0.21	0.00 ± 0.00	3.61 ± 0.37	bdl	bdl	bdl	6.64 ± 0.73	0.53 ± 0.06
					200	± 0.38	0.02 ± 0.00	6.40	bdl	0.05	bdl	± 0.79	8.42 ± 0.95
					150	1.77 ± 0.20	0.02 ± 0.00	4.54 ± 0.47	bdl	0.06 ± 0.01	0.00 ± 0.00	8.16 ± 0.89	5.65 ± 0.57
					100	1.08 ± 0.12	0.02 ± 0.00	3.49 ± 0.35	bdl	0.03 ± 0.00	0.01 ± 0.00	11.7 ± 1.3	10.3 ± 1.1
					80	1.04 ± 0.12	0.03 ± 0.00	2.84 ± 0.31	bdl	bdl	0.00 ± 0.00	17.4 ± 1.9	14.7 ± 1.5
					60	0.90 ± 0.10	0.03 ± 0.00	2.64 ± 0.29	bdl	bdl	bdl	21.7 ± 2.4	13.2 ± 1.4
					40	0.46 ± 0.05	0.04 ± 0.01	1.15 ± 0.12	bdl	bdl	0.02 ± 0.00	30.4 ± 3.2	24.1 ± 2.6
					30	bdl	bdl	bdl	bdl	bdl	bdl	28.9 ± 3.0	13.4 ± 1.5
					20	bdl	bdl	1.44 ± 0.15	bdl	0.12 ± 0.01	0.09 ± 0.01	175 ± 18	102 ± 11
61	59.753	-45.112	19/06/2014	151	136	18.7 ± 1.9	0.06 ± 0.01	60.3 ± 6.1	0.09 ± 0.01	0.46 ± 0.05	0.02 ± 0.00	17.2 ± 1.8	10.8 ± 1.2
					120	14.5 ± 1.6	0.34 ± 0.04	46.2 ± 4.7	0.05 ± 0.03	0.56 ± 0.06	0.02 ± 0.00	17.5 ± 1.8	6.50 ± 0.68
					100	9.59 ± 0.98	0.03 ± 0.01	29.0 ± 3.1	0.08 ± 0.03	0.41 ± 0.04	0.02 ± 0.00	13.7 ± 1.5	6.61 ± 0.68
					70	11.0 ± 1.2	0.00 ± 0.00	37.2 ± 3.8	bdl	0.39 ± 0.04	0.05 ± 0.01	96.1 ± 9.9	32.3 ± 3.4
					50	15.6 ± 1.8	0.04 ± 0.00	52.2 ± 5.9	bdl	0.41 ± 0.04	0.10 ± 0.01	88.1 ± 9.1	55.7 ± 5.8
					25	14.1 ± 1.5	0.07 ± 0.01	47.1 ± 4.9	bdl	0.39 ± 0.04	0.12 ± 0.01	125 ± 13	72.1 ± 7.7
63	59.434	-45.666	19/06/2014	1563	1558	9.09 ± 0.01	0.01 ± 0.00	20.8 ± 0.0	0.03 ± 0.00	0.38 ± 0.00	bdl	1.66 ± 1.99	0.21 ± 0.02
					1300	6.84 ± 0.75	0.01 ± 0.00	14.7 ± 1.5	0.01 ± 0.00	0.29 ± 0.03	bdl	1.86 ± 0.21	0.47 ± 0.05
					1096	5.81 ± 0.69	0.01 ± 0.00	12.2 ± 1.4	bdl	0.26 ± 0.03	0.00 ± 0.00	2.12 ± 0.23	0.62 ± 0.07
					850	4.60 ± 0.53	0.02 ± 0.00	9.65 ± 1.11	0.05 ± 0.01	0.21 ± 0.02	0.00 ± 0.00	2.30 ± 0.25	0.99 ± 0.11
					500	6.63 ± 0.71	0.02 ± 0.00	15.6 ± 1.7	0.02 ± 0.00	0.22 ± 0.02	bdl	3.00 ± 0.32	2.01 ± 0.24
					400	5.51 ± 0.61	0.05 ± 0.01	13.7 ± 1.5	0.09 ± 0.02	0.17 ± 0.02	0.00 ± 0.00	4.12 ± 0.47	2.22 ± 0.24
					300	5.56 ± 0.62	0.02 ± 0.00	14.9 ± 1.7	0.01 ± 0.00	0.17			

					2001	3.68 ± 0.37	0.03 ± 0.00	7.79 ± 0.83	0.05 ± 0.01	0.19 ± 0.02	0.00 ± 0.00	0.84 ± 0.09					
					1800	3.22 ± 0.34	0.00 ± 0.00	7.07 ± 0.73		0.18 ± 0.02	0.00 ± 0.00	0.82 ± 0.09					
					1601	3.49 ± 0.36	0.00 ± 0.00	6.85 ± 0.72	0.01 ± 0.00	0.19 ± 0.02	0.00 ± 0.00	1.11 ± 0.12	0.06 ± 0.01				
					1400	2.81 ± 0.29	0.40 ± 0.05	5.64 ± 0.60	0.81 ± 0.09	0.17 ± 0.02	0.02 ± 0.00	1.14 ± 0.12	0.96 ± 0.11				
					1150	2.68 ± 0.29	0.03 ± 0.00	5.80 ± 0.60	0.06 ± 0.01	0.16 ± 0.02	0.00 ± 0.00	1.49 ± 0.16	0.50 ± 0.05				
					1050	0.49 ± 0.05	0.77 ± 0.08	1.08 ± 0.11	1.59 ± 0.16	0.03 ± 0.00	0.05 ± 0.01	0.39 ± 0.04	0.91 ± 0.10				
					900	1.77 ± 0.19	0.01 ± 0.00	4.04 ± 0.43	0.01 ± 0.00	0.11 ± 0.01	0.00 ± 0.00	2.20 ± 0.23	0.81 ± 0.09				
					800	2.19 ± 0.26	0.03 ± 0.00	4.47 ± 0.47	± 0.00	0.13 ± 0.01	0.00 ± 0.00	2.24 ± 0.24	0.87 ± 0.10				
					700	1.98 ± 0.21	0.01 ± 0.00	4.06 ± 0.45	± 0.00	0.13 ± 0.02	0.00 ± 0.00	2.20 ± 0.26	1.58 ± 0.19				
					500	2.36 ± 0.25	0.02 ± 0.01	4.86 ± 0.49	0.06 ± 0.03	0.11 ± 0.01	0.00 ± 0.00	3.02 ± 0.33	2.23 ± 0.24				
					400	4.57 ± 0.49	0.01 ± 0.00	9.50 ± 0.96	0.00 ± 0.00	0.20 ± 0.02	0.00 ± 0.00	2.22 ± 0.23	1.56 ± 0.17				
					320	5.62 ± 0.68	0.01 ± 0.00	12.3 ± 1.3	0.02 ± 0.00	0.22 ± 0.02	0.00 ± 0.00	3.89 ± 0.42	2.46 ± 0.27				
					200	3.38 ± 0.30	0.01 ± 0.00	7.83 ± 0.73	0.01 ± 0.00	0.13 ± 0.01	0.00 ± 0.00	5.25 ± 0.47	3.99 ± 0.43				
					150	2.56 ± 0.28	0.01 ± 0.00	6.10 ± 0.64	± 0.00	0.10 ± 0.01	0.00 ± 0.00	9.99 ± 1.01	4.78 ± 0.50				
					100	0.97 ± 0.10	0.02 ± 0.00	2.48 ± 0.28	0.01 ± 0.00	0.03 ± 0.00	0.01 ± 0.00	9.67 ± 1.01	6.09 ± 0.65				
					50	0.14 ± 0.02	0.02 ± 0.00	0.85 ± 0.09	0.02 ± 0.00	0.01 ± 0.00	0.01 ± 0.00	21.4 ± 2.3	10.7 ± 1.2				
					35	0.44 ± 0.05		1.66 ± 0.18		0.04 ± 0.00		58.6 ± 6.0					
					25	bdl	0.01 ± 0.00	0.15 ± -0.02	bdl	bdl	0.01 ± 0.00	36.9 ± 3.1	22.2 ± 2.4				
					15	bdl	bdl	bdl	bdl	bdl	bdl	41.1 ± 4.2	29.5 ± 3.2				
68	56.913	-47.419	21/06/2014	3586	3638	68.4 ± 9.4	0.24 ± 0.09	156 ± 17	0.49 ± 0.18	2.46 ± 0.26	0.01 ± 0.00	4.61 ± 0.52	0.28 ± 0.03				
					3399	5.62 ± 0.77	0.03 ± 0.00	15.3 ± 1.7	0.07 ± 0.01	0.32 ± 0.04	0.00 ± 0.00	0.76 ± 0.08	0.03 ± 0.00				
					2500	1.85 ± 0.19	0.01 ± 0.00	4.68 ± 0.50	0.01 ± 0.00	0.14 ± 0.02	bdl	0.78 ± 0.09	0.01 ± 0.00				
					1700	2.11 ± 0.22	0.00 ± 0.00	5.17 ± 0.53	bdl	0.13 ± 0.01	0.00 ± 0.00	0.86 ± 0.09	0.29 ± 0.03				
					1400	1.69 ± 0.18	0.49 ± 0.06	4.52 ± 0.49	1.34 ± 0.14	0.10 ± 0.01	0.03 ± 0.00	1.44 ± 0.15	1.12 ± 0.12				
					900	1.20 ± 0.18	0.01 ± 0.00	3.33 ± 0.39	bdl	0.09 ± 0.01	0.00 ± 0.00	2.13 ± 0.22	1.97 ± 0.23				
					350	2.02 ± 0.25	0.02 ± 0.00	5.31 ± 0.55	bdl	0.10 ± 0.01	0.00 ± 0.00	3.49 ± 0.40	3.10 ± 0.35				
					101	1.79 ± 0.25	0.03 ± 0.00	5.84 ± 0.73	bdl	0.09 ± 0.01	0.01 ± 0.00	9.99 ± 1.10	10.5 ± 1.2				
					50	1.00 ± 0.13	0.04 ± 0.01	4.09 ± 0.65	bdl	0.04 ± 0.01	0.02 ± 0.00	25.5 ± 3.0	20.5 ± 2.5				
					35	0.52 ± 0.07	0.06 ± 0.01	2.25 ± 0.36	bdl	0.01 ± 0.00	0.03 ± 0.01	25.8 ± 2.9	43.0 ± 5.9				
					30	0.79 ± 0.11	0.04 ± 0.02	4.20 ± 0.54	bdl	0.04 ± 0.01	0.03 ± 0.02	67.0 ± 7.4	55.4 ± 6.9				
					20	0.43 ± 0.06	0.01 ± 0.00	2.15 ± 0.31	bdl	0.03 ± 0.01	0.01 ± 0.00	63.8 ± 7.3	34.9 ± 4.1				
69	55.841	-48.093	23/06/2014	3741	3726	58.9 ± 6.3	0.12 ± 0.02	139 ± 15	0.28 ± 0.05	2.42 ± 0.26	0.00 ± 0.00	3.82 ± 0.44	0.52 ± 0.06				
					3700	57.8 ± 6.3	0.08 ± 0.02	138 ± 15	0.22 ± 0.08	2.38 ± 0.25	0.00 ± 0.00	3.81 ± 0.42	0.38 ± 0.05				
					3500		0.03 ± 0.01		0.05 ± 0.01		0.00 ± 0.00		bdl				
					3249	2.64 ± 0.27	0.00 ± 0.00	6.07 ± 0.63	bdl	0.17 ± 0.02	0.00 ± 0.00	0.67 ± 0.07	0.12 ± 0.01				
					2800	2.21 ± 0.24	0.01 ± 0.00	5.66 ± 0.59	0.04 ± 0.00	0.15 ± 0.02	0.00 ± 0.00	0.77 ± 0.08	0.28 ± 0.03				
					2399	2.18 ± 0.23	0.01 ± 0.00	5.15 ± 0.52	bdl	0.15 ± 0.02	0.00 ± 0.00	1.58 ± 0.18	1.33 ± 0.14				
					2100	1.48 ± 0.16	0.00 ± 0.00	3.70 ± 0.38	bdl	0.10 ± 0.01	0.00 ± 0.00	0.47 ± 0.06	0.08 ± 0.01				
					1800	1.63 ± 0.18	bdl	3.99 ± 0.46	bdl	0.12 ± 0.01	0.00 ± 0.00	0.77 ± 0.08	0.19 ± 0.02				
					1600	1.64 ± 0.17	0.00 ± 0.00	4.21 ± 0.45	bdl	0.11 ± 0.01	0.00 ± 0.00	0.91 ± 0.10	0.32 ± 0.03				
					1400	1.69 ± 0.18	0.00 ± 0.00	4.52 ± 0.46	bdl	0.11 ± 0.01	0.00 ± 0.00	1.26 ± 0.14	0.59 ± 0.07				
					1100	1.67 ± 0.19	0.00 ± 0.00	4.50 ± 0.48	bdl	0.09 ± 0.01	0.00 ± 0.00	2.28 ± 0.24	0.79 ± 0.09				
					801	1.92 ± 0.00	0.01 ± 0.36	5.09 ± 0.00	0.02 ± 0.86	0.11 ± 0.00	0.00 ± 0.01	3.31 ± 0.19	1.73 ± 0.56				
					501	1.87 ± 0.28	0.02 ± 0.00	5.02 ± 0.74	0.03 ± 0.00	0.11 ± 0.01	0.00 ± 0.00	3.34 ± 0.40	1.99 ± 0.21				
					180	2.97 ± 0.31	0.02 ± 0.00	8.06 ± 0.82	0.01 ± 0.00	0.14 ± 0.01	0.00 ± 0.00	9.39 ± 0.98	5.10 ± 0.53				
					130	3.09 ± 0.32	0.03 ± 0.00	8.64 ± 0.89	0.02 ± 0.00	0.13 ± 0.01	0.01 ± 0.00	9.30 ± 0.98	6.22 ± 0.72				
					100	2.87 ± 0.30	0.03 ± 0.00	8.27 ± 0.85	0.04 ± 0.00	0.13 ± 0.01	0.01 ± 0.00	9.02 ± 0.92	9.05 ± 0.93				
					70	2.88 ± 0.31	0.04 ± 0.00	8.69 ± 0.90	bdl	0.16 ± 0.02	0.01 ± 0.00	13.9 ± 1.5	11.7 ± 1.3				
					40	1.80 ± 0.19	0.05 ± 0.01	6.51 ± 0.67	0.03 ± 0.00	0.12 ± 0.01	0.00 ± 0.00	38.1 ± 4.4	19.7 ± 2.1				
					25	1.02 ± 0.13	0.07 ± 0.02	4.07 ± 0.42	0.03 ± 0.02	0.07 ± 0.01	0.03 ± 0.00	103 ± 11	61.5 ± 6.9				
					15	1.29 ± 0.14	0.08 ± 0.01	4.49 ± 0.49	0.01 ± 0.00	0.08 ± 0.01	0.04 ± 0.00	130 ± 14	83.3 ± 8.4				
71	53.692	-49.433	24/06/2014	3700	3736	88.9 ± 17.0	0.09 ± 0.04	264 ± 54	0.26 ± 0.11	3.49 ± 0.85	0.00 ± 0.00	7.27 ± 0.81	0.69 ± 0.08				
					3500	4.80 ± 0.52	bdl	13.6 ± 1.8	bdl	0.24 ± 0.03	bdl	0.74 ± 0.08	0.14 ± 0.03				
					3000	1.80 ± 0.41	0.00 ± 0.00	5.01 ± 0.59	0.00 ± 0.00	0.12 ± 0.06	bdl	0.46 ± 0.17	bdl				
					2400	1.44 ± 0.28	0.00 ± 0.00	3.65 ± 0.47	bdl	0.10 ± 0.05	bdl	0.37 ± 0.14	0.36 ± 0.05				
					1200	0.99 ± 0.12	0.00 ± 0.00	2.94 ± 0.36	bdl	0.09 ± 0.01	0.00 ± 0.00	1.14 ± 0.13	0.27 ± 0.03				
					800	0.89 ± 0.09	0.02 ± 0.00	2.75 ± 0.33	0.03 ± 0.00	0.08 ± 0.01	0.00 ± 0.00	1.88 ± 0.21	0.61 ± 0.07				
					500	0.97 ± 0.18	0.01 ± 0.00	3.22 ± 0.59	0.01 ± 0.00	0.09 ± 0.02	0.00 ± 0.00	2.43 ± 0.26	1.05 ± 0.11				
					250	0.54 ± 0.06	0.00 ± 0.00	1.76 ± 0.22	bdl	0.05 ± 0.01	0.00 ± 0.00	3.31 ± 0.36	1.88 ± 0.23				
					150	0.54 ± 0.06	0.00 ± 0.00	1.93 ± 0.22	bdl	0.05 ± 0.01	0.00 ± 0.00	4.69 ± 0.60	2.55 ± 0.32				
					100	0.51 ± 0.06	0.04 ± 0.01	1.82 ± 0.20	bdl	0.03 ± 0.01	0.01 ± 0.00	6.43 ± 0.76	3.42 ± 0.46				
					60	0.24 ± 0.03	0.01 ± 0.00	1.04 ± 0.26	bdl	0.01 ± 0.00	0.03 ± 0.00	11.8 ± 1.3	19.9 ± 2.1				
					50	0.43 ± 0.05	0.02 ± 0.00	2.58 ± 0.27	0.08 ± 0.01	0.05 ± 0.01	0.03 ± 0.01	43.7 ± 4.8	27.6 ± 3.2				
					40	0.06 ± 0.01	0.02 ± 0.00	0.18 ± 0.02	0.05 ± 0.01	0.01 ± 0.00	0.01 ± 0.00	15.3 ± 1.7	7.33 ± 0.84				
					30	bdl	bdl	0.14 ± 0.02	bdl	0.07 ± 0.01	0.04 ± 0.01	77.1 ± 9.8	38.4 ± 4.3				
					20	0.27 ± 0.03	0.03 ± 0.00	0.49 ± 0.07	0.03 ± 0.00	0.11 ± 0.02	0.07 ± 0.01	106 ± 15	55.8 ± 6.5				
77	53.000	-51.100	26/06/2014	2558	2543	10.1 ± 1.1	0.02 ± 0.01	28.9 ± 3.3	0.04 ± 0.01	0.35 ± 0.04	0.00 ± 0.00	1.22 ± 0.14	0.22 ± 0.04				
					2450	9.42 ± 0.99	0.02 ± 0.00	26.7 ± 2.9	0.07 ± 0.01	0.33 ± 0.04	0.00 ± 0.00	0.93 ± 0.11	bdl				
					2400	9.29 ± 1.04	0.20 ± 0.03	26.6 ± 2.7	0.50 ± 0.06	0.32 ± 0.03	0.01 ± 0.00	0.83 ± 0.09	bdl				
					2100	3.61 ± 0.39	0.02 ± 0.00	8.87 ± 0.94	0.03 ± 0.00	0.17 ± 0.02	0.00 ± 0.00	0.45 ± 0.05	bdl				
					1900	3.62 ± 0.37	0.01 ± 0.00	8.79 ± 0.93	0.00 ± 0.00	0.16 ± 0.02	0.00 ± 0.00	0.89 ± 0.10	bdl				
					1700	2.55 ± 0.29	0.42 ± 0.04	6.72 ± 0.75	1.24 ± 0.13	0.14 ± 0.02	0.01 ± 0.00	0.77 ± 0.09	0.20 ± 0.02				
					1500	2.63 ± 0.28	0.00 ± 0.00	6.80 ± 0.71	0.00 ± 0.00	0.13 ± 0.01	0.00 ± 0.00	0.72 ± 0.07	bdl				
					1300	2.64 ± 0.28	0.01 ± 0.00	7.08 ± 0.73	bdl	0.14 ± 0.02	0.00 ± 0.00	0.97 ± 0.12	0.13 ± 0.01				
					1200	3.14 ± 0.33	bdl	8.69 ± 0.90	bdl	0.14 ± 0.02	0.00 ± 0.00	0.80 ± 0.08	0.10 ± 0.01				
					1100	2.12 ± 0.22	0.04 ± 0.01	5.90 ± 0.60	0.11 ± 0.01	0.10 ± 0.01	0.00 ± 0.00	1.39 ± 0.16	0.51 ± 0.06				
					1000												



**TS2: Estimated lithogenic PFe (in nmol L-1 and in % of the total PFe concentration), non lithogenic PFe (nmol L-1), sedimentary PMn (in nmol L-1 and in % of the total PMn concentration).**

Station [#]	Latitude [°N]	Longitude [°W]	Sampling Date (dd/mm/yy)	Bottom Depth (m)	Depth [m]	PFe <sub>litho</sub> [nmol L <sup>-1</sup> ]	PFe <sub>litho</sub> [%]	PFe <sub>non-litho</sub> [nmol L <sup>-1</sup> ]	Mn <sub>sediment</sub> [nmol L-1]	Mn <sub>sediment</sub> [%]
1	40.333	-10.036	20/05/2014	3590	3575	6.64	100	0.00	0.11	81
					3400	3.61	100	0.00	0.06	70
					3253	7.42	100	0.00	0.12	57
					2999	7.80	100	0.00	0.13	91
					2501	3.91	99	0.03	0.06	53
					2001	3.42	96	0.13	0.06	43
					1599	3.11	95	0.17	0.05	41
					1400	2.15	100	0.00	0.04	33
					1198	2.03	91	0.20	0.03	26
					1001	4.08	95	0.20	0.07	31
					849	4.14	100	0.00	0.07	40
					700	4.15	100	0.00	0.07	45
					597	5.53	100	0.03	0.09	57
					499	3.67	100	0.00	0.06	78
					400	4.74	100	0.00	0.08	49
					300	8.37	100	0.00	0.14	55
					200	6.44	99	0.10	0.10	40
					150	3.69	100	0.00	0.06	21
					125	2.08	95	0.10	0.03	15
					100	2.16	98	0.05	0.03	17
80	1.92	96	0.08	0.03	19					
60	1.11	100	0.00	0.02	29					
40	0.37	100	0.00	0.01	33					
20	0.74	96	0.03	0.01	33					
2	40.333	-9.459	21/05/2014	153.5	138.5	304	100	0.00	2.51	100
					119.5	15.9	100	0.00	0.27	47
					100	6.29	100	0.00	0.10	32
					75	4.56	94	0.29	0.07	25
					50	1.66	88	0.23	0.03	13
					36	1.32	81	0.31	0.02	12
					20	1.41	56	1.12	0.02	12
4	40.333	-9.767	21/05/2014	804	800	9.82	100	0.00	0.17	59
					700	11.8	100	0.00	0.18	77
					600	10.0	100	0.00	0.20	81
					501	2.77	100	0.00	0.18	85
					400	2.38	100	0.00	0.05	29
					300	4.53	100	0.00	0.04	24
					200	3.08	100	0.00	0.08	37
					149	1.35	100	0.00	0.05	29
					70	0.60	100	0.00	0.03	39
					38	0.02	100	0.00	0.01	54
20	1.90	100	0.00	ND	ND					
11	40.333	-12.219	23/05/2014	5360	5347	1.38	100	0.00	0.04	55
					5000	1.01	100	0.00	0.03	49
					4000	2.25	100	0.00	0.02	41

					2998	7.11	92	0.63	0.04	53
					2500	4.69	96	0.17	0.12	60
					2000	1.78	100	0.00	0.08	51
					1599	1.18	95	0.06	0.03	40
					1200	1.07	90	0.11	0.02	23
					1001	0.55	100	0.00	0.02	20
					800	0.51	100	0.00	0.01	13
					701	0.53	100	0.00	0.01	12
					501	0.94	84	0.18	0.01	8
					301	0.26	100	0.00	0.02	10
					201	0.25	100	0.00	0.01	6
					101	0.26	100	0.00	0.01	7
					80	ND	ND	ND	0.01	13
					25	0.29	100	0.00	0.01	32
					15	1.14	100	0.00	0.02	50
13	41.383	-13.888	25/05/2014	5455	5440	2.52	79	0.65	0.04	33
					5000	1.06	82	0.23	0.02	26
					4000	0.79	83	0.17	0.01	24
					2997	0.91	80	0.24	0.01	21
					2500	1.67	85	0.29	0.03	24
					2000	1.40	89	0.17	0.02	21
					1500	0.99	76	0.32	0.02	16
					1200	0.90	73	0.32	0.01	12
					1000	0.46	66	0.24	0.01	7
					798	1.00	77	0.30	0.02	12
					600	0.81	77	0.24	0.01	8
					500	0.72	65	0.38	0.01	5
					300	0.56	89	0.07	0.01	7
					200	0.42	84	0.08	0.01	5
					150	0.41	75	0.13	0.01	5
					125	0.36	85	0.06	0.01	5
					100	0.45	80	0.12	0.01	6
					80	0.44	100	0.00	0.01	17
					60	0.15	100	0.00	0.01	10
					40	0.05	100	0.00	0.02	29
					25	0.10	100	0.00	0.01	9
					15	0.15	100	0.00	0.01	8
15	42.581	-15.461	26/05/2014	5135	5121	2.31	90	0.27	0.04	34
					5004	1.81	87	0.26	0.03	32
					4001	0.89	90	0.10	0.01	27
					3001	1.04	92	0.09	0.02	22
					2500	0.85	85	0.15	0.01	17
					2000	0.85	80	0.21	0.01	15
					1800	1.15	84	0.22	0.02	17
					1600	ND	ND	ND	ND	ND
					1400	0.78	90	0.08	0.01	15
					1100	0.84	84	0.16	0.01	13
					1000	0.98	88	0.14	0.02	15
					800	1.30	83	0.26	0.02	18
					650	1.38	97	0.04	0.02	18

					400	0.75	100	0.00	0.01	8
					300	0.48	100	0.00	0.01	5
					100	0.30	100	0.00	0.01	7
					70.5	0.66	100	0.00	0.01	13
					60.2	0.17	100	0.00	0.01	18
					49.9	0.12	100	0.00	0.01	20
					29.9	0.19	100	0.00	0.01	11
					20.08	0.18	100	0.00	0.01	15
17	43.780	-17.031	27/05/2014	4080	4062	1.13	99	0.01	0.02	16
					3500	0.71	94	0.05	0.01	17
					3000	0.65	100	0.00	0.01	15
					2500	0.82	98	0.01	0.01	14
					2002	0.68	90	0.07	0.01	11
					1800	0.63	100	0.00	0.01	11
					1600	0.81	100	0.00	0.01	14
					1400	0.50	99	0.00	0.01	11
					1200	0.54	100	0.00	0.01	11
					1000	0.57	83	0.12	0.01	9
					800	0.74	100	0.00	0.01	11
					600	0.87	86	0.14	0.01	11
					500	0.53	100	0.00	0.01	10
					400	0.63	100	0.00	0.01	8
					351	0.44	100	0.00	0.01	6
					200	0.28	100	0.00	0.01	11
					100	0.13	100	0.00	0.01	12
					70	0.15	100	0.00	0.01	30
					60	0.28	100	0.00	0.01	33
					45	0.10	100	0.00	0.01	13
					30	0.09	100	0.00	0.01	15
					15	0.20	100	0.00	0.01	13
19	45.051	-18.505	28/05/2014	4640	4625	1.20	85	0.20	0.02	15
					3999	0.61	86	0.10	0.01	15
					3000	0.60	85	0.10	0.01	13
					2500	0.43	83	0.09	0.01	10
					2000	ND	ND	ND	0.00	100
					1800	0.63	83	0.12	0.01	9
					1601	0.50	86	0.08	0.01	8
					1402	0.47	84	0.09	0.01	8
					1200	0.53	100	0.00	0.01	11
					1000	0.55	89	0.07	0.01	9
					800	0.48	83	0.10	0.01	6
					600	0.27	100	0.00	0.00	4
					500	0.37	100	0.00	0.01	6
					401	0.37	93	0.03	0.01	6
					300	0.24	100	0.00	0.00	5
					201	0.32	25	0.98	0.01	6
					100	0.32	100	0.00	0.01	7
					50	0.13	100	0.00	0.00	10
					40	0.05	100	0.00	0.00	8
					30	0.07	100	0.00	0.00	8

					20	0.04	100	0.00	0.00	9
21	46.544	-19.672	01/06/2014	4607	4592	1.87	76	0.58	0.03	16
					4499	1.83	73	0.66	0.03	16
					3500	0.55	68	0.25	0.01	9
					2999	0.46	55	0.39	0.01	6
					2800	0.60	53	0.53	0.01	7
					2299	0.47	55	0.38	0.01	6
					2001	0.44	56	0.34	0.01	6
					1501	0.47	58	0.34	0.01	7
					1250	0.49	71	0.20	0.01	7
					1000	0.44	73	0.16	0.01	6
					799	0.49	79	0.13	0.01	5
					700	0.51	85	0.09	0.01	6
					600	0.37	100	0.00	0.01	6
					499	0.25	100	0.00	0.00	6
					400	0.35	100	0.00	0.01	10
					300	0.35	100	0.00	0.01	4
					200	0.36	100	0.00	0.01	5
					100	0.18	100	0.00	0.01	15
					80	0.19	100	0.00	0.01	16
					50	0.16	100	0.00	0.00	13
					30	ND	ND	ND	0.01	5
					20	ND	ND	ND	0.01	4
23	48.039	-20.848	02/06/2014	4455	4000	1.40	92	0.12	0.02	19
					3500	1.56	100	0.00	0.03	21
					3000	2.41	100	0.00	0.05	21
					2300	0.46	41	0.66	0.01	6
					2000	0.39	53	0.36	0.01	5
					1800	0.40	49	0.41	0.01	6
					1600	0.38	56	0.30	0.01	5
					1400	0.42	58	0.30	0.01	6
					1200	0.39	51	0.38	0.01	5
					800	0.34	77	0.10	0.01	4
					400	0.23	100	0.00	0.00	4
					200	0.17	100	0.00	0.00	5
					100	0.24	100	0.00	0.01	6
					70	0.19	100	0.00	0.01	12
					60	0.13	100	0.00	0.01	21
					40	0.31	100	0.00	0.01	21
					30	0.22	100	0.00	0.01	9
					20	0.29	100	0.00	0.01	8
25	49.529	-22.017	03/06/2014	4168	4269	3.34	86	0.54	0.05	15
					4000	1.65	78	0.46	0.03	12
					3500	0.83	70	0.36	0.01	9
					3000	0.80	63	0.47	0.01	8
					2600	0.54	48	0.59	0.01	7
					2000	0.58	80	0.15	0.01	8
					1800	0.52	59	0.36	0.01	6
					1600	0.52	63	0.30	0.01	6
					1400	0.49	63	0.30	0.01	6

					1200	0.43	69	0.19	0.01	5
					1000	0.45	69	0.20	0.01	5
					800	0.51	100	0.00	0.01	7
					650	0.40	100	0.00	0.01	6
					499	0.34	100	0.00	0.01	6
					349	0.03	100	0.00	0.00	8
					200	0.15	100	0.00	0.00	10
					100	0.18	100	0.00	0.01	19
					75	0.15	100	0.00	0.01	19
					50	0.15	100	0.00	0.01	17
					35	0.41	100	0.00	0.01	19
					25	0.25	100	0.00	0.01	5
					15	0.34	99	0.00	0.01	3
26	50.278	-22.605	04/06/2014	4207	4192	8.48	100	0.00	0.14	15
					4000	0.71	91	0.07	0.01	13
					3000	0.73	64	0.41	0.01	8
					2300	0.52	54	0.44	0.01	7
					2000	0.64	68	0.30	0.01	8
					1600	0.56	55	0.46	0.01	6
					1400	0.41	57	0.31	0.01	5
					1200	0.54	73	0.20	0.01	6
					1000	0.41	67	0.20	0.01	5
					900	0.44	73	0.16	0.01	5
					750	0.55	78	0.15	0.01	5
					600	0.53	92	0.05	0.01	6
					500	0.40	93	0.03	0.01	5
					400	0.28	84	0.05	0.00	4
					300	0.26	100	0.00	0.00	4
					200	0.33	89	0.04	0.01	8
					131	0.08	40	0.13	0.00	7
					99	0.07	56	0.05	0.00	16
					70	0.09	100	0.00	0.00	5
					50	0.17	100	0.00	0.00	8
					35	0.24	100	0.00	0.00	6
					20	0.31	83	0.07	0.01	5
29	53.020	-24.752	05/06/2014	3556	3584	8.95	87	1.38	0.14	11
					3000	1.02	49	1.06	0.02	8
					2500	0.62	48	0.66	0.01	7
					2000	0.73	61	0.47	0.01	9
					1800	0.93	72	0.37	0.02	10
					1600	0.84	56	0.66	0.01	8
					1400	0.81	59	0.56	0.01	8
					1200	1.04	73	0.39	0.02	10
					1100	0.77	63	0.44	0.01	7
					900	1.03	94	0.07	0.02	9
					800	0.78	68	0.37	0.01	7
					600	0.61	66	0.32	0.01	6
					500	0.57	87	0.08	0.01	6
					401	0.53	76	0.16	0.01	5
					300	0.42	83	0.09	0.01	7

					200	0.29	87	0.04	0.00	6
					150	0.26	93	0.02	0.00	12
					100	0.22	97	0.01	0.00	16
					75	0.13	51	0.12	0.00	8
					50	0.10	57	0.08	0.00	5
					25	0.15	65	0.08	0.00	4
					15	0.18	50	0.18	0.00	5
32	55.515	-26.703	08/06/2014	3284	3271	21.3	52	19.4	0.34	12
					3230	14.5	49	14.9	0.23	11
					3000	2.63	43	3.50	0.04	9
					2500	0.59	50	0.58	0.01	7
					2000	0.82	53	0.71	0.01	8
					1750	0.72	52	0.66	0.01	7
					1500	0.71	58	0.51	0.01	7
					1250	0.64	60	0.42	0.01	6
					1000	0.55	63	0.33	0.01	5
					800	0.68	66	0.36	0.01	6
					700	0.52	99	0.01	0.01	6
					600	0.55	79	0.14	0.01	6
					500	0.60	75	0.20	0.01	6
					401	0.19	98	0.00	0.00	7
					300	ND	ND	ND	0.00	5
					200	0.18	90	0.02	0.00	20
					100	0.23	89	0.03	0.00	13
					60	0.13	63	0.07	0.00	6
					50	0.02	100	0.00	0.00	6
					40	ND	ND	ND	ND	ND
					30	0.17	56	0.14	0.00	3
					15	0.08	32	0.16	0.00	3
34	57.004	-27.879	09/06/2014	2751	2777	6.11	45	7.47	0.10	9
					2600	3.40	45	4.09	0.05	8
					2600	2.39	44	3.07	0.04	8
					2400	1.05	39	1.66	0.02	8
					2100	0.68	49	0.72	0.01	7
					1800	0.53	49	0.55	0.01	6
					1600	0.58	52	0.54	0.01	5
					1400	0.46	55	0.38	0.01	5
					1200	0.38	55	0.31	0.01	4
					1000	0.36	55	0.29	0.01	4
					850	0.42	51	0.40	0.01	5
					700	0.53	80	0.13	0.01	7
					600	0.51	69	0.23	0.01	7
					450	0.58	69	0.26	0.01	7
					380	0.49	76	0.15	0.01	7
					300	0.35	81	0.08	0.01	11
					200	0.36	84	0.07	0.01	15
					100	0.20	84	0.04	0.00	13
					60	0.10	55	0.08	0.00	6
					45	0.10	51	0.10	0.00	5
					28	0.11	47	0.12	0.00	3

					10	0.10	66	0.05	0.00	3
36	58.207	-29.725	10/06/2014	2224	2245	11.8	43	15.7	0.19	17
					1800	1.87	41	2.70	0.03	13
					1500	0.79	37	1.32	0.01	10
					1220	0.41	45	0.51	0.01	5
					850	0.36	44	0.47	0.01	6
					500	0.88	44	1.11	0.01	6
					250	0.39	59	0.27	0.01	19
					125	0.01	100	0.00	0.00	31
					70	0.25	79	0.07	0.00	14
					40	0.10	46	0.12	0.00	3
					20	0.10	47	0.12	0.00	3
38	58.843	-31.266	10/06/2014	1365	1354	6.04	37	10.2	0.10	19
					1300	6.13	35	11.4	0.10	18
					1163	5.30	36	9.41	0.09	18
					1000	2.35	35	4.27	0.04	14
					950	1.41	35	2.61	0.02	14
					800	0.80	42	1.09	0.01	14
					575	0.84	42	1.18	0.01	12
					500	0.64	40	0.95	0.01	13
					400	0.44	51	0.42	0.01	16
					300	0.66	45	0.80	0.01	20
					200	0.73	57	0.55	0.01	29
					100	0.37	65	0.20	0.01	38
					70	0.18	89	0.02	0.00	18
					60	0.13	65	0.07	0.00	6
					50	0.12	45	0.14	0.00	7
					30	0.09	60	0.06	0.00	4
					20	0.05	51	0.05	0.00	1
40	59.102	-33.828	11/06/2014	2320	2306	1.85	56	1.48	0.03	13
					2100	0.66	33	1.35	0.01	7
					1600	0.58	36	1.05	0.01	7
					1299	0.16	35	0.29	0.00	6
					1000	0.49	35	0.91	0.01	7
					600	0.36	39	0.57	0.01	7
					350	0.27	57	0.21	0.00	11
					70	0.68	100	0.00	0.01	21
					20	0.21	50	0.20	0.00	3
42	59.363	-36.396	12/06/2014	3150	3131	19.3	45	23.7	0.31	17
					3100	11.2	46	13.3	0.18	16
					2900	1.22	47	1.37	0.02	11
					2500	0.70	40	1.05	0.01	7
					2250	0.67	36	1.20	0.01	7
					2000	0.66	36	1.17	0.01	7
					1800	0.64	38	1.04	0.01	7
					1600	0.79	38	1.28	0.01	8
					1400	0.59	39	0.94	0.01	7
					1200	0.44	43	0.58	0.01	7
					1050	0.65	48	0.69	0.01	9
					900	0.53	45	0.65	0.01	8

					700	0.64	46	0.76	0.01	10
					500	0.46	46	0.55	0.01	9
					401	0.43	47	0.49	0.01	8
					300	0.39	54	0.33	0.01	10
					200	0.36	57	0.27	0.01	11
					100	0.43	66	0.22	0.01	18
					70	0.50	75	0.17	0.01	17
					51	0.44	78	0.13	0.01	11
					20	0.67	99	0.01	0.01	4
44	59.623	-38.954	14/06/2014	2979	2964	19.7	45	23.8	0.32	20
					2900	11.9	44	15.2	0.19	19
					2800	7.84	46	9.38	0.13	18
					2600	2.77	41	4.06	0.04	13
					2250	0.74	40	1.12	0.01	8
					2000	0.76	39	1.16	0.01	8
					1800	0.75	39	1.18	0.01	7
					1600	0.72	41	1.05	0.01	8
					1400	0.66	43	0.87	0.01	8
					1100	0.77	49	0.81	0.01	9
					900	0.02	74	0.01	0.00	13
					700	0.50	49	0.52	0.01	13
					600	0.67	53	0.60	0.01	14
					470	1.14	47	1.30	0.02	10
					300	0.61	49	0.64	0.01	13
					200	0.55	50	0.55	0.01	11
					160	0.51	29	1.26	0.01	12
					120	0.61	52	0.57	0.01	11
					50	0.50	79	0.14	0.01	29
					35	0.54	84	0.10	0.01	3
					30	0.21	81	0.05	0.00	3
					20	0.72	76	0.23	0.01	3
49	59.773	-41.297	15/06/2014	2060	2052	8.74	45	10.8	0.14	20
					2000	8.93	45	10.8	0.14	20
					1900	4.35	45	5.36	0.07	17
					1800	3.23	44	4.14	0.05	16
					1650	3.77	44	4.79	0.06	17
					1500	3.16	42	4.35	0.05	16
					1250	2.76	42	3.78	0.04	15
					1101	1.99	41	2.81	0.03	14
					1000	1.93	41	2.75	0.03	14
					901	2.17	42	2.97	0.04	16
					801	1.76	43	2.37	0.03	14
					700	1.50	42	2.05	0.02	13
					600	1.35	42	1.87	0.02	14
					550	1.81	42	2.51	0.03	15
					400	1.97	44	2.53	0.03	18
					300	1.77	46	2.07	0.03	21
					200	1.52	52	1.43	0.02	23
					102	0.88	77	0.27	0.01	28
					80	0.76	77	0.22	0.01	20



					61	0.51	100	0.00	0.01	8
					40	0.41	100	0.00	0.01	6
					20	0.45	100	0.00	0.01	6
53	59.899	-43.003	17/06/2014	180	165	15.4	71	6.18	0.25	40
					130	11.8	71	4.75	0.19	37
					100	14.9	67	7.23	0.24	31
					70	6.70	62	4.06	0.11	24
					50	6.78	71	2.72	0.11	25
					30	12.9	67	6.23	0.21	35
56	59.823	-42.399	18/06/2014	308	298	4.60	70	1.99	0.07	49
					248	3.06	70	1.31	0.05	40
					170	3.18	75	1.06	0.05	36
					120	1.88	72	0.75	0.03	32
					60	2.41	70	1.05	0.04	38
					40	3.83	67	1.85	0.06	40
					20	5.74	70	2.47	0.09	41
60	59.799	-42.003	17/06/2014	1752	1737	6.45	45	7.95	0.10	20
					1647	6.38	45	7.87	0.10	30
					1500	8.07	45	9.82	0.13	32
					1300	2.83	40	4.26	0.05	21
					1150	2.20	38	3.59	0.04	21
					950	0.40	24	1.27	0.01	89
					850	1.02	36	1.82	0.02	22
					750	0.57	36	1.04	0.01	29
					650	0.78	36	1.41	0.01	22
					550	0.45	34	0.90	ND	ND
					450	0.64	35	1.20	0.01	69
					350	1.18	38	1.90	0.02	59
					300	0.86	41	1.26	ND	ND
					250	0.76	40	1.14	ND	ND
					200	ND	ND	ND	ND	ND
					150	0.95	53	0.84	0.02	26
					100	0.73	66	0.37	0.01	29
					80	0.60	55	0.48	0.00	100
					60	0.55	60	0.37	ND	ND
					40	0.24	48	0.26	0.00	16
					30	ND	ND	ND	ND	ND
					20	ND	ND	ND	0.00	2
61	59.753	-45.112	19/06/2014	151	136	12.68	68	6.04	0.21	43
					120	9.71	65	5.12	0.16	27
					100	6.10	63	3.52	0.10	23
					70	7.81	71	3.24	0.13	29
					50	11.0	70	4.65	0.18	35
					25	9.90	70	4.23	0.16	32
63	59.434	-45.666	19/06/2014	1563	1558	4.38	48	4.71	0.07	19
					1300	3.09	45	3.76	0.05	17
					1096	2.57	44	3.24	0.04	16
					850	2.04	44	2.59	0.03	16
					500	3.27	49	3.37	0.05	24
					400	2.90	52	2.67	0.05	27

					300	3.13	56	2.45	0.05	29
					200	3.31	62	2.05	0.05	35
					100	4.99	70	2.18	0.08	46
					70	5.08	69	2.25	0.08	42
					40	2.62	69	1.20	0.04	34
64	59.068	-46.083	20/06/2014	2517	2502	6.58	46	7.67	0.11	18
					2401	4.16	44	5.22	0.07	16
					2151	0.64	46	0.74	0.01	9
					2001	1.65	44	2.06	0.03	14
					1800	1.48	46	1.73	0.02	14
					1601	1.44	41	2.05	0.02	12
					1400	1.35	42	1.85	0.02	11
					1150	1.23	46	1.47	0.02	13
					1050	0.56	45	0.70	0.01	11
					900	0.85	48	0.93	0.01	13
					800	0.94	42	1.29	0.02	12
					700	0.85	43	1.13	0.01	11
					500	1.03	43	1.35	0.02	15
					400	2.00	44	2.58	0.03	16
					320	2.58	46	3.05	0.04	19
					200	1.65	48	1.75	0.03	20
					150	1.28	50	1.29	0.02	19
					100	0.52	53	0.46	0.01	26
					50	0.16	100	0.00	0.00	17
					35	0.35	79	0.09	0.01	13
					25	0.01	100	0.00	0.00	4
					15	ND	ND	ND	ND	ND
68	56.913	-47.419	21/06/2014	3586	3638	32.8	48	35.9	0.53	22
					3399	3.22	57	2.42	0.05	17
					2500	0.99	53	0.87	0.02	11
					1700	1.08	51	1.03	0.02	13
					1400	1.23	56	0.95	0.02	15
					900	0.70	58	0.51	0.01	13
					350	1.11	55	0.92	0.02	19
					101	1.23	68	0.59	0.02	20
					50	0.86	82	0.18	0.01	25
					35	0.47	82	0.10	0.01	19
					30	0.83	100	0.00	0.01	20
					20	0.44	100	0.00	0.01	17
69	55.841	-48.093	23/06/2014	3741	3726	29.3	50	29.8	0.47	20
					3700	29.1	50	28.8	0.47	20
					3500	0.01	34	0.02	0.00	13
					3249	1.28	48	1.36	0.02	12
					2800	1.20	54	1.03	0.02	13
					2399	1.08	49	1.11	0.02	12
					2100	0.78	52	0.71	0.01	12
					1800	0.84	51	0.79	0.01	11
					1600	0.88	54	0.75	0.01	13
					1400	0.95	56	0.74	0.02	14
					1100	0.94	56	0.73	0.02	16

					801	1.07	56	0.86	0.02	15
					501	1.06	56	0.83	0.02	15
					180	1.69	57	1.29	0.03	20
					130	1.82	58	1.29	0.03	21
					100	1.74	60	1.15	0.03	21
					70	1.82	63	1.09	0.03	18
					40	1.37	74	0.47	0.02	18
					25	0.86	79	0.23	0.01	14
					15	0.95	69	0.42	0.02	13
71	53.692	-49.433	24/06/2014	3700	3736	55.5	62	33.5	0.90	26
					3500	2.85	59	1.95	0.05	19
					3000	1.05	58	0.75	0.02	15
					2400	0.77	53	0.67	0.01	13
					1200	0.62	62	0.37	0.01	11
					800	0.58	64	0.33	0.01	11
					500	0.68	69	0.30	0.01	12
					250	0.37	68	0.17	0.01	11
					150	0.41	75	0.14	0.01	14
					100	0.38	70	0.16	0.01	15
					60	0.22	88	0.03	0.00	9
					50	0.45	100	0.00	0.01	11
					40	0.05	60	0.03	0.00	4
					30	ND	ND	ND	0.00	0
					20	0.11	36	0.19	0.00	1
77	53.000	-51.100	26/06/2014	2558	2543	6.07	60	4.08	0.10	28
					2450	5.62	60	3.82	0.09	28
					2400	5.69	60	3.80	0.09	28
					2100	1.87	52	1.76	0.03	18
					1900	1.85	51	1.78	0.03	18
					1700	1.67	56	1.30	0.03	19
					1500	1.43	54	1.21	0.02	18
					1300	1.49	56	1.16	0.02	17
					1200	1.83	58	1.31	0.03	21
					1100	1.26	58	0.90	0.02	20
					1000	1.49	64	0.83	0.02	23
					700	1.87	62	1.17	0.03	23
					400	1.86	62	1.12	0.03	28
					150	3.14	68	1.47	0.05	40
					100	2.61	67	1.29	0.04	40
					80	1.13	69	0.50	0.02	32
					60	1.00	73	0.38	0.02	26
					40	1.22	28	3.15	0.02	8
					30	0.39	55	0.32	0.01	3
					15	0.20	42	0.28	0.00	2
78	51.989	-53.817	27/06/2014	383	371	117.4	70	50.5	1.90	95
					290	36.7	68	17.0	0.59	67
					250	57.3	69	25.9	0.93	86
					140	19.9	66	10.3	0.32	51
					36	0.39	50	0.40	0.01	5
					10	0.41	51	0.39	0.01	34