

Supplement of Biogeosciences, 17, 1133–1145, 2020
<https://doi.org/10.5194/bg-17-1133-2020-supplement>
© Author(s) 2020. This work is distributed under
the Creative Commons Attribution 4.0 License.



Supplement of

Distribution and behaviour of dissolved selenium in tropical peatland-draining rivers and estuaries of Malaysia

Yan Chang et al.

Correspondence to: Yan Chang (ychang@sklec.ecnu.edu.cn)

The copyright of individual parts of the supplement might differ from the CC BY 4.0 License.

- 1 Table S1 Ranges (with Mean values in parentheses) of temperature, salinity, pH, dissolved oxygen, TDSe, DISe, DOSe
- 2 concentration and DOSe/TDSe ratio in the sampled estuaries in Malaysia in March and September 2017, respectively. (n.a. and
- 3 DLs represent not available and detection limits, respectively)

Rivers and Estuaries	Periods	Temperature (°C)	Salinity	pH	DO (mg L ⁻¹)	TDSe (nmol L ⁻¹)	DISe (nmol L ⁻¹)	DOSe (nmol L ⁻¹)	DOSe/TDSe ratio
Rajang	March	27-30	0-30.1	6.03-8.24	4.55-7.57	1.09-3.72 (1.86)	0.12-0.41 (0.25)	0.69-4.51 (1.61)	0.63-0.96 (0.83)
	September	26.3-30.18	0-31.9	5.23-7.25	4.16-8.20	1.67-2.96 (2.17)	0.13-0.47 (0.24)	1.06-2.75 (1.92)	0.72-0.97 (0.88)
Maludam	March	26-29.2	0.01-20.0	3.70-7.56	1.78-6.85	1.78-4.04 (2.41)	DLs-0.29 (0.06)	1.42-4.04 (2.35)	0.70-0.99 (0.96)
	September	25-32.2	0.03-21.0	4.16-7.9	1.5-6.23	1.47-3.89 (2.29)	DLs-0.26 (0.07)	1.22-3.89 (2.21)	0.83-0.99 (0.96)
Sebuyau	March	27.8-30.7	0-23.5	4.32-7.75	1.39-7.88	1.59-6.85 (2.77)	DLs-0.35 (0.14)	1.32-5.02 (2.49)	0.73-0.99 (0.92)
	September	28-31.3	0.01-10.7	n.a.	2.08-6.18	1.38-2.64 (2.19)	DLs -0.19 0.06)	1.38-2.63 (2.13)	0.93-0.99 (0.98)
Simunjan	March	27.4-28.9	0-0.43	4.66-6.31	0.99-2.58	1.95-5.72 (3.85)	DLs-0.14 (0.03)	1.80-5.72 (3.84)	0.93-0.99 (0.98)
	September	27.6-28.4	0-4.6	4.72-6.65	3.04-4.20	1.47-2.64 (2.17)	DLs-0.38 (0.097)	1.31-2.49 (2.07)	0.86-0.99 (0.95)
Samunsam	March	27.8-30.7	0.36-27.4	6.29-8.36	5.57-6.72	1.28-4.17 (2.28)	0.02-0.25 (0.16)	1.06-4.12 (2.11)	0.82-0.99 (0.91)
	September	26.5-31.0	0.64-32.6	4.6-8.2	n.a.	1.36-2.69 (1.78)	0.0036-0.35 (0.15)	1.05-2.46 (1.63)	0.78-0.99 (0.91)
Sematan	March	26.5-29.8	0.14-28.0	6.80-8.34	5.88-6.64	1.10-2.45 (1.71)	0.16-0.29 (0.22)	0.85-2.19 (1.48)	0.78-0.91 (0.86)
	September	26.6-31.1	3.39-32.6	7.9-8.2	n.a.	0.70-2.68 (1.32)	0.12-0.35(0.26)	0.42-2.46 (1.06)	0.60-0.94(0.76)
Lundu	September	30.3-30.6	15.1-31.04	7.3-8	n.a.	0.80-1.72 (1.29)	0.26-0.35(0.31)	0.45-1.41 (0.97)	0.56-0.82 (0.73)

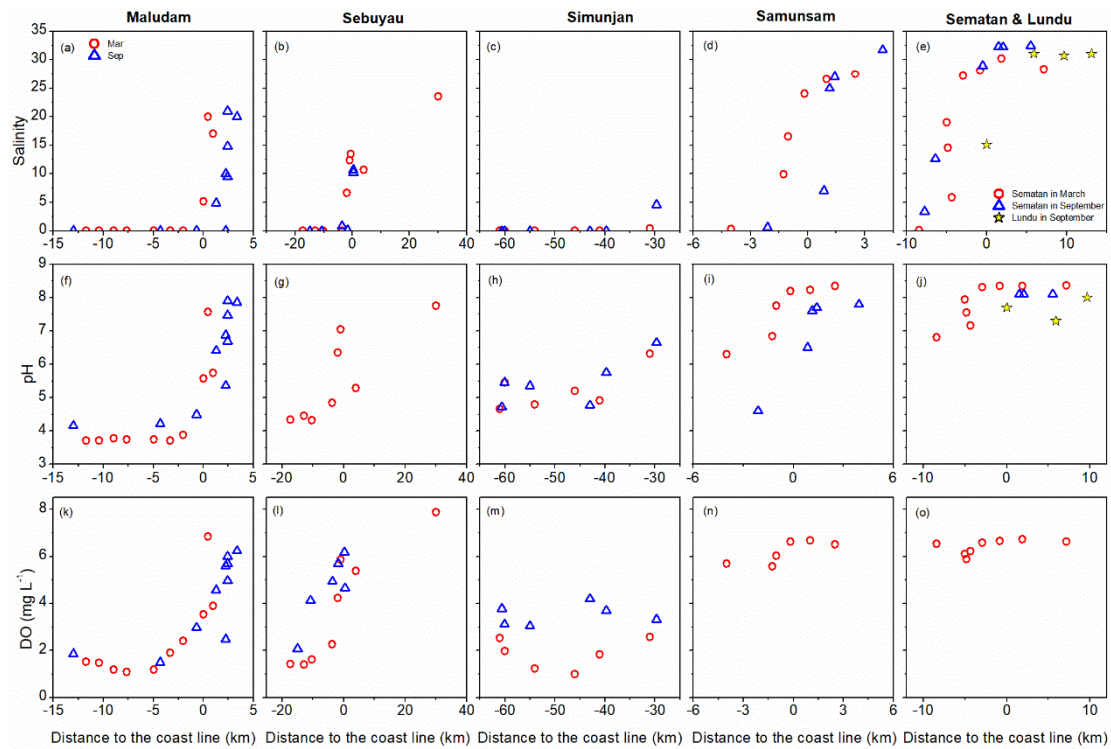


Figure S1 Salinity, pH and dissolved oxygen (DO) concentrations along the Maludam, Sebuyau, Simunjan, Samunsam, Sematan and Lunda estuaries, in March and September 2017, respectively.

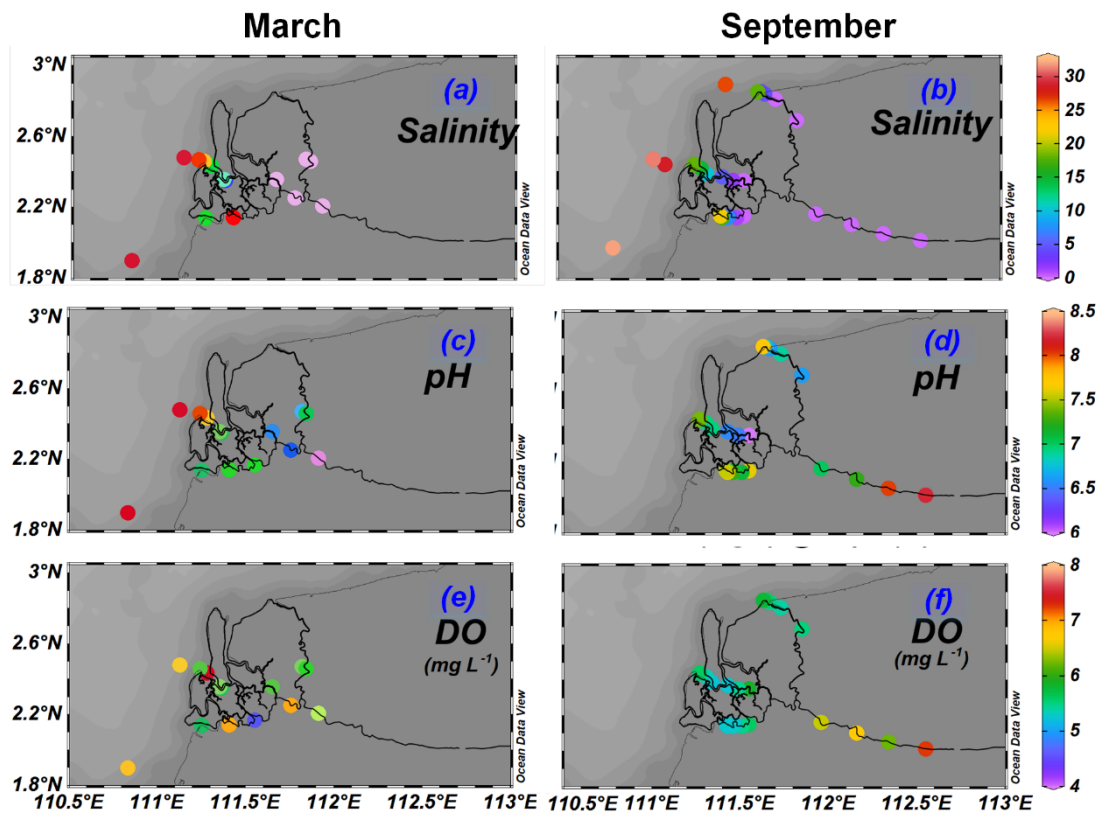


Figure S2 Distributions of salinity, pH, dissolved oxygen (DO) concentrations in March and September 2017 in the Rajang Estuary. All distribution plots were made with Ocean Data View (2019).

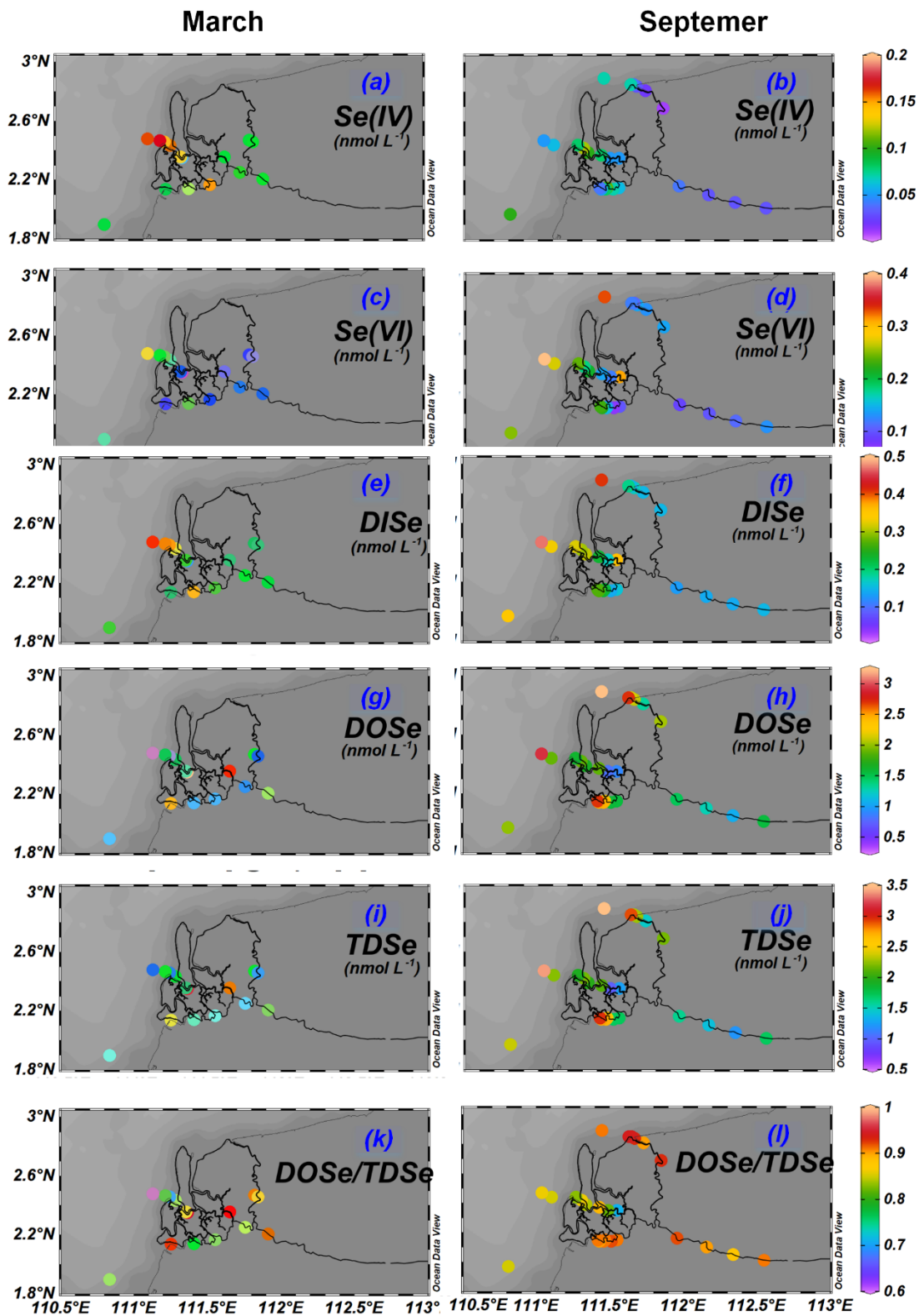


Figure S3. Distributions of Se(IV), Se(VI), DISe, DOSe, and TDSe concentrations, and of DOSe/TDSe ratio in surface waters of the Rajang estuary in March and September 2017. All distribution plots were made with Ocean Data View (2019).

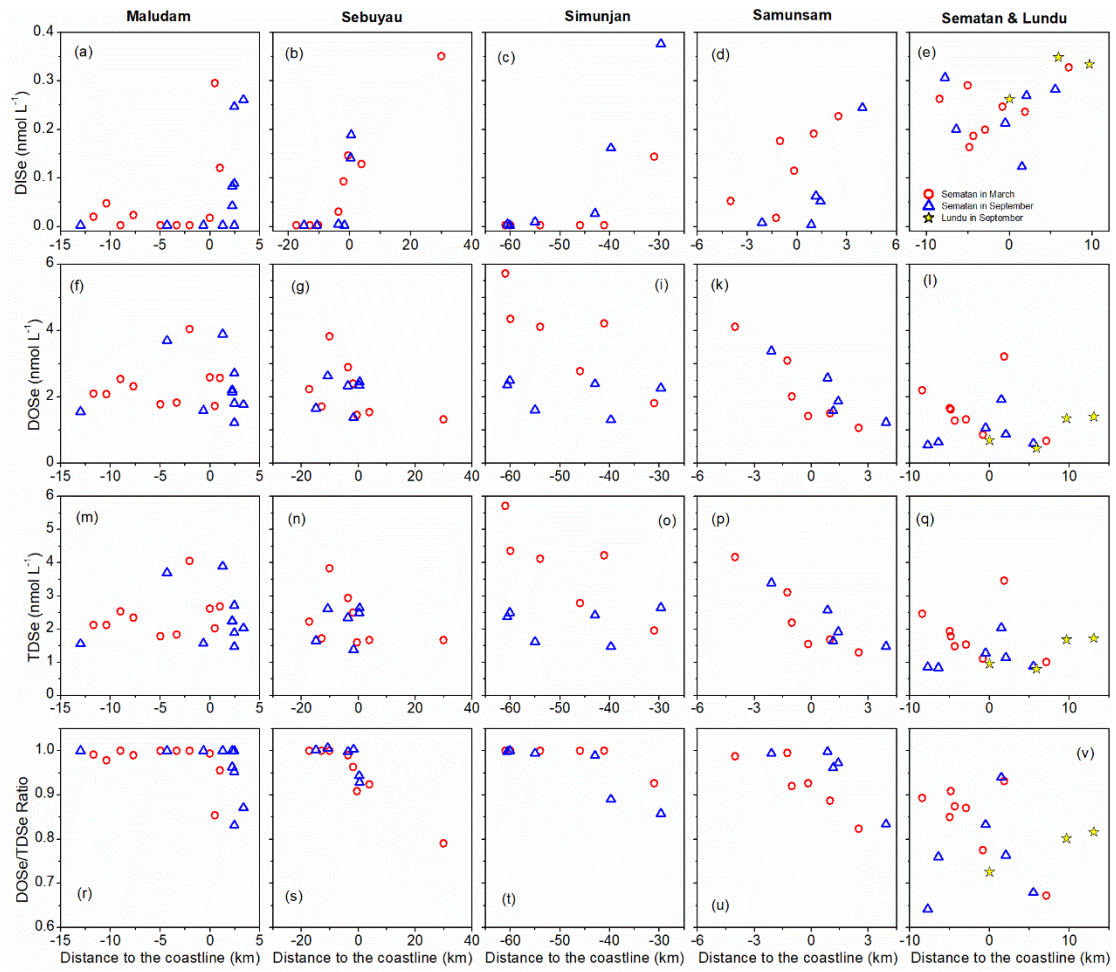


Figure S4. DISe, DOSe, and TDSe concentrations and DOSe/TDSe ratio along the Maludam, Sebuyau, Simunjan, Samunsam, Sematan, and Lunda estuaries in March and September 2017.

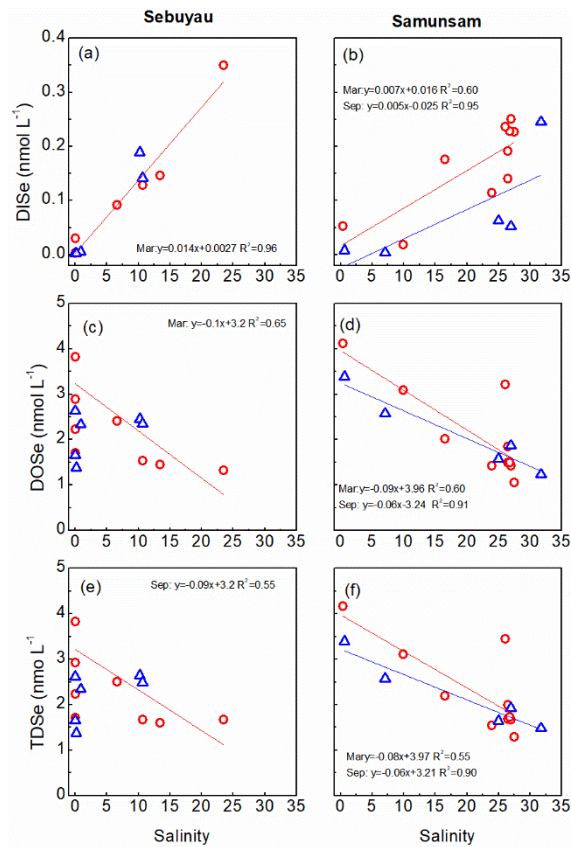


Figure S5. Relationships between DISe, DOSe, and TDSe concentrations with salinity in the Sebuyau and Samunsam estuaries. Red circles and blue triangles represent data for March and September 2017, respectively.