

Supplement of Biogeosciences, 17, 2149–2167, 2020  
<https://doi.org/10.5194/bg-17-2149-2020-supplement>  
© Author(s) 2020. This work is distributed under  
the Creative Commons Attribution 4.0 License.



*Supplement of*

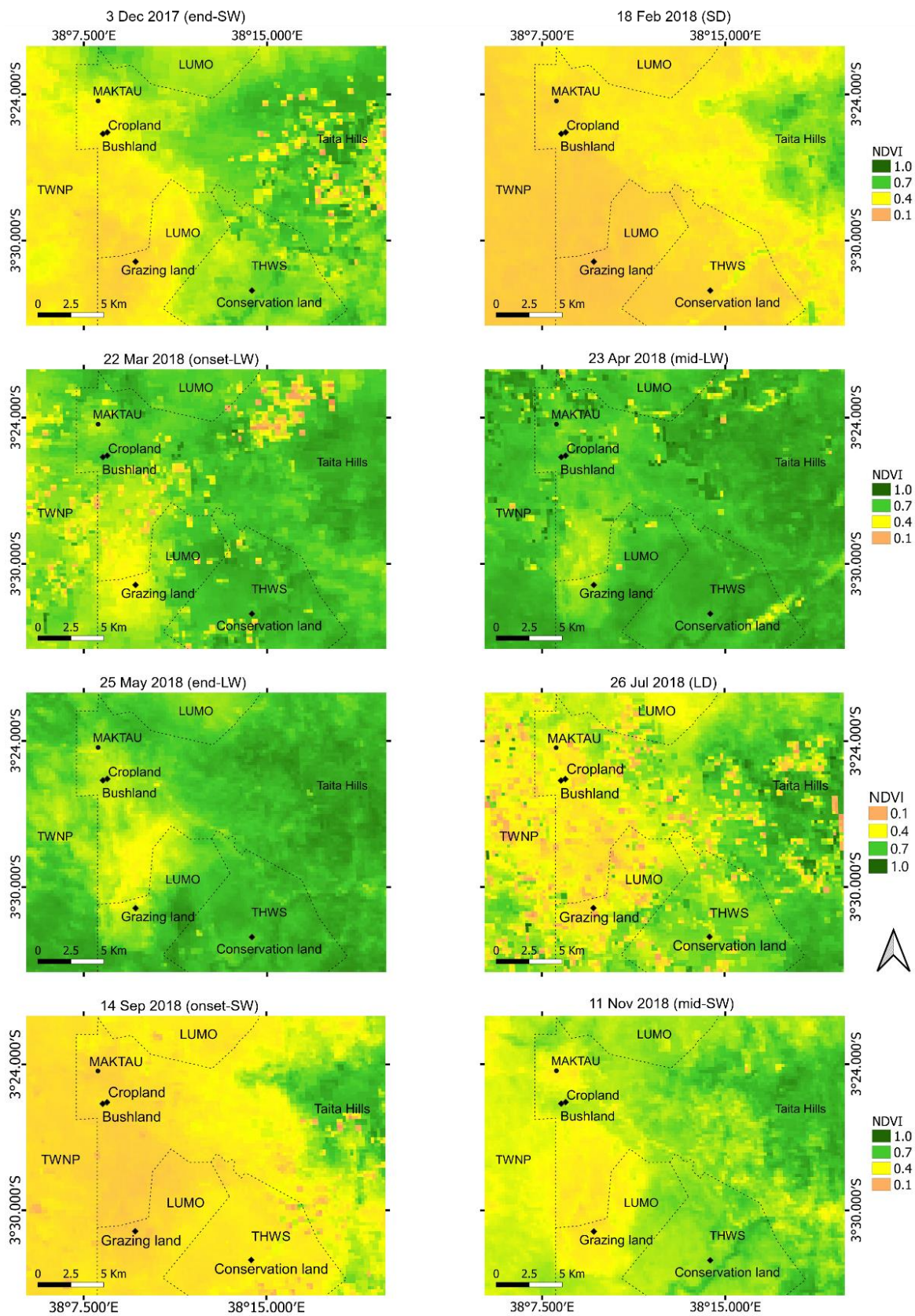
## **Soil greenhouse gas emissions under different land-use types in savanna ecosystems of Kenya**

**Sheila Wachiye et al.**

*Correspondence to:* Sheila Wachiye (sheila.wachiye@helsinki.fi)

The copyright of individual parts of the supplement might differ from the CC BY 4.0 License.

## Change in vegetation cover over the study area during the campaign period



**Fig. S1:** Normalized difference vegetation index (NDVI) maps for each campaign (SW and LW denotes short and long wet seasons with corresponding onset, mid and end of the season, and SD and

*LD for short and long dry season) from November 2017 to November 2018. LUMO is the LUMO community wildlife sanctuary; TWNP stands for the Tsavo west National Park and THWS for Taita hills wildlife sanctuary. Normalized Difference Vegetation Index (NDVI) products (MOD13Q1) from MODIS (Moderate Resolution Imaging Spectroradiometer) from <https://adsweb.modaps.eosdis.nasa.gov>.*