



x100 Vacc=1.00kV

Detector=LED

100µm  
Mode=SEM

WD=6.4mm

10/1/2019

14:03:13



x370 Vacc=1.00kV

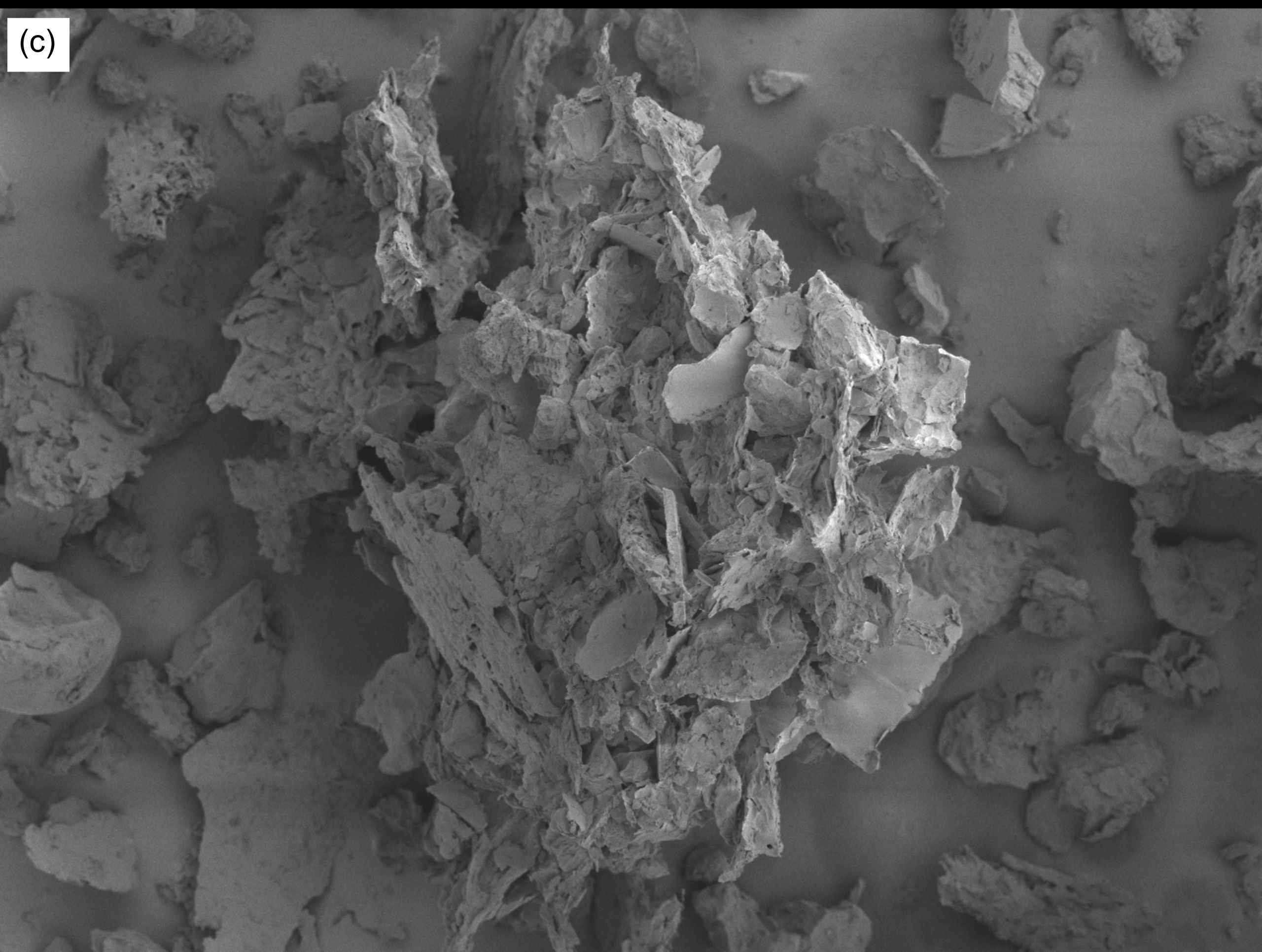
Detector=LED

10µm  
Mode=SEM

WD=6.4mm

10/1/2019

13:46:36



x700 Vacc=1.00kV

Detector=LED

10µm  
Mode=SEM

WD=6.5mm

10/1/2019

13:28:09