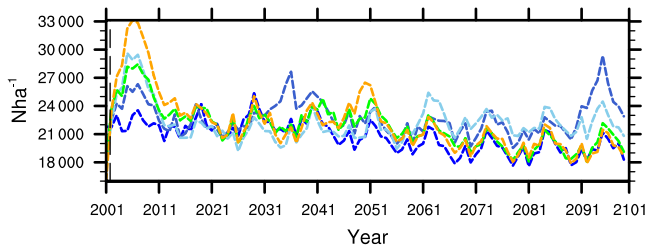
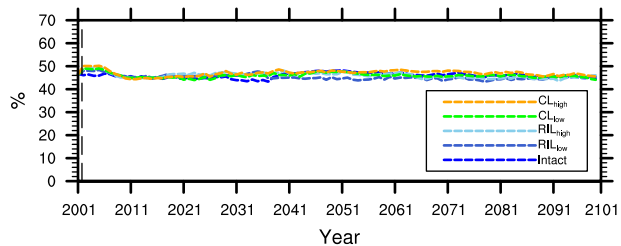


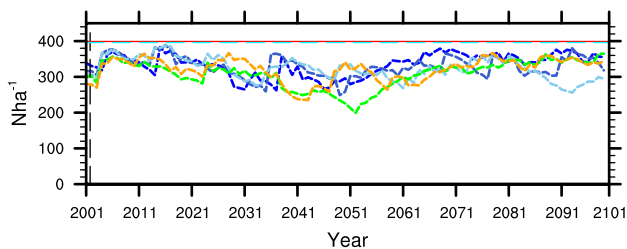
(a) Stem density, 0–10 cm



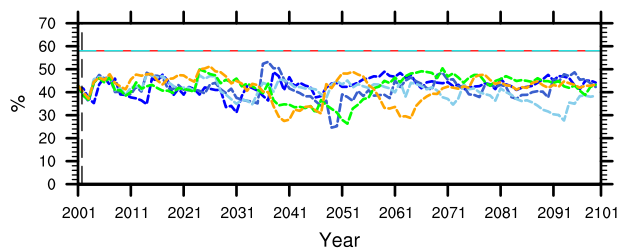
(b) Fraction of early successional, 0–10 cm



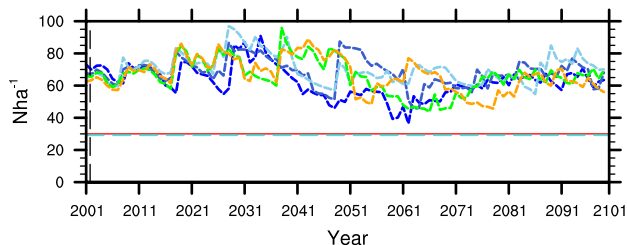
(c) Stem density, 10–30 cm



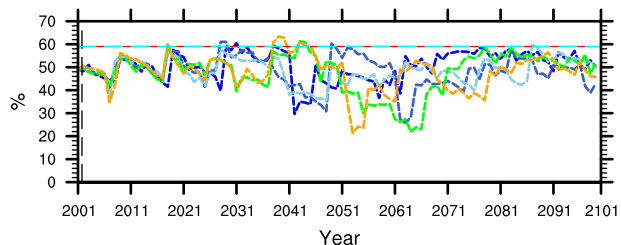
(d) Fraction of early successional, 10–30 cm



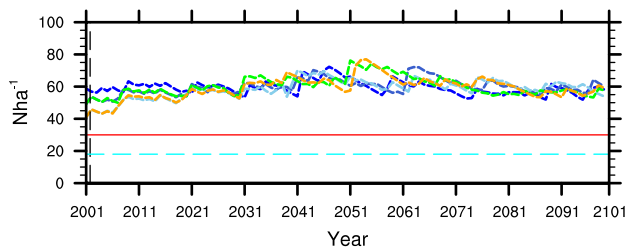
(e) Stem density, 30–50 cm



(f) Fraction of early successional, 30–50 cm



(g) Stem density, >= 50 cm



(h) Fraction of early successional, >= 50 cm

