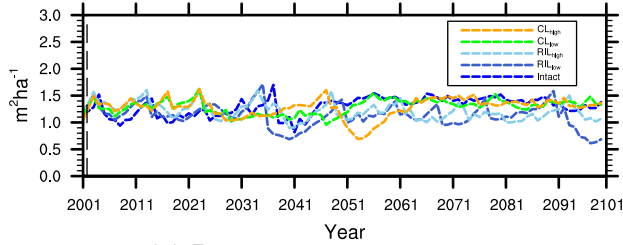
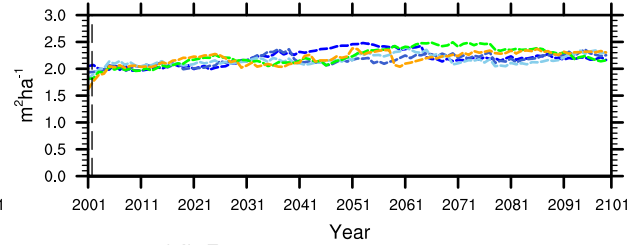


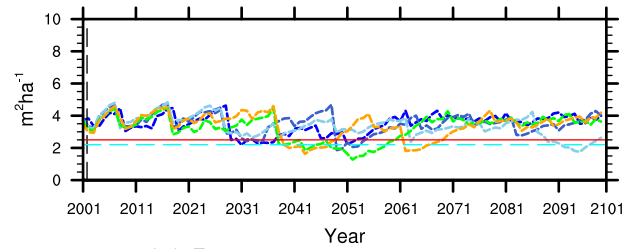
(a) Basal area, 0–10 cm, early



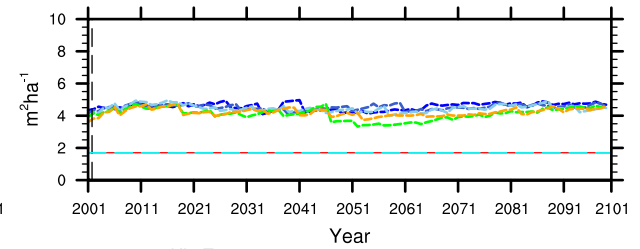
(b) Basal area, 0–10 cm, late



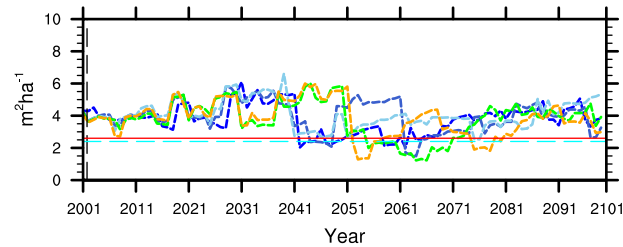
(c) Basal area, 10–30 cm, early



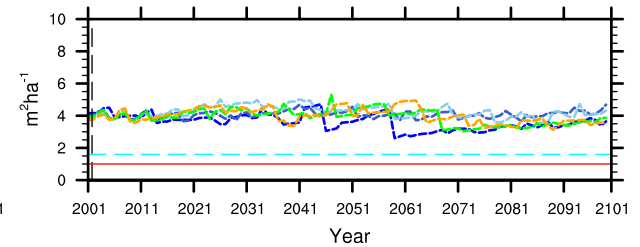
(d) Basal area, 10–30 cm, late



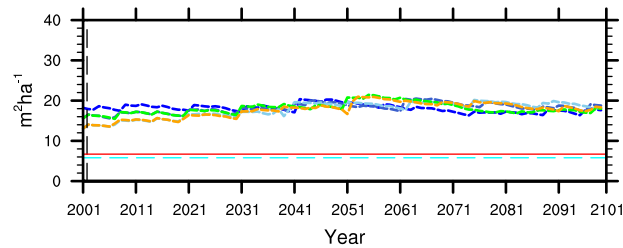
(e) Basal area, 30–50 cm, early



(f) Basal area, 30–50 cm, late



(g) Basal area, >= 50 cm, early



(h) Basal area, >= 50 cm, late

