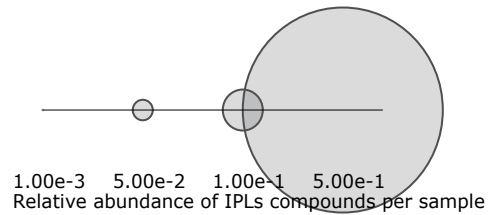
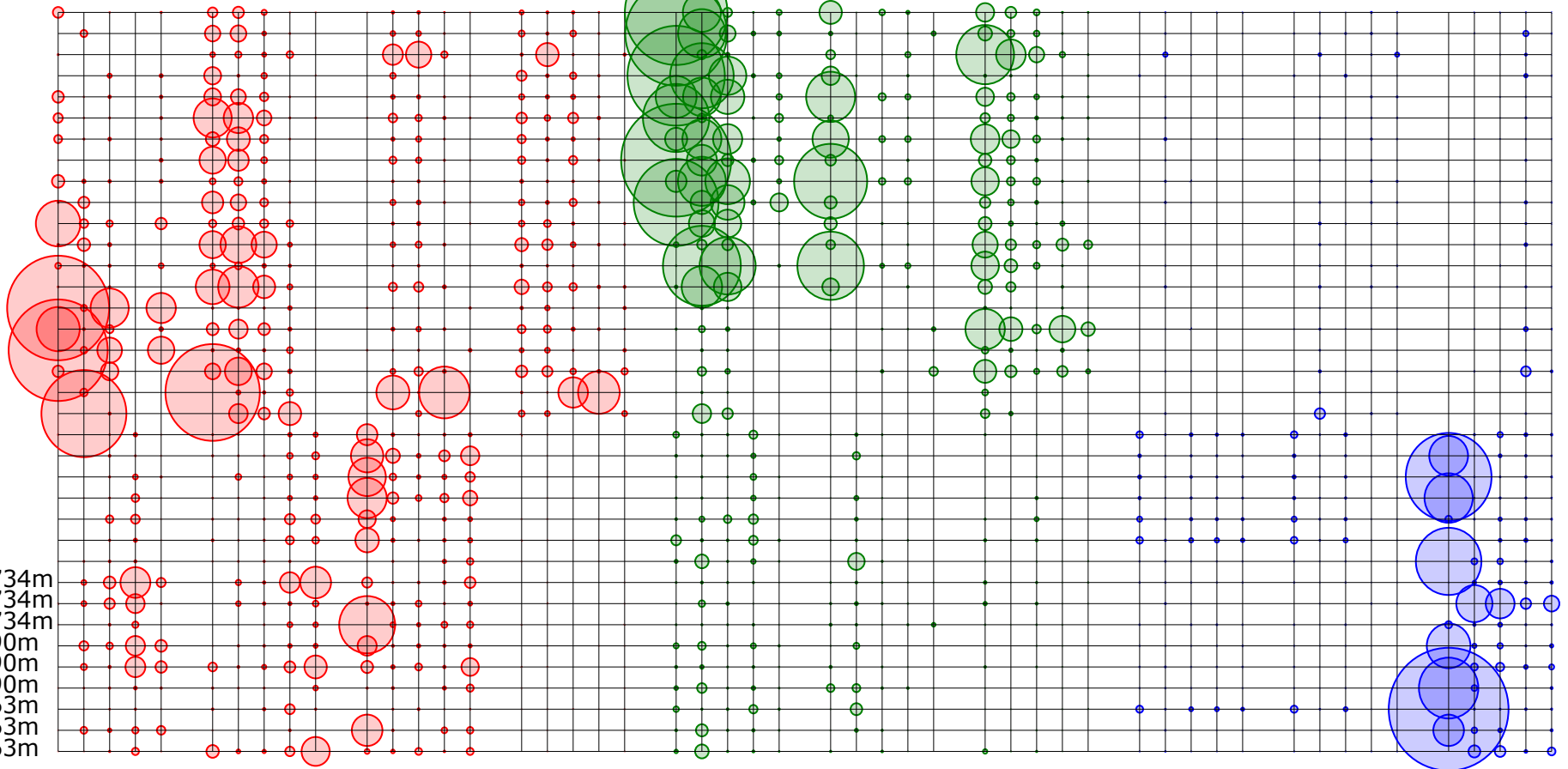


Chl_Max_T3_0.3_9m
 Chl_Max_T3_2.7_9m
 Upper_Oxy_T3_0.3_14m
 Upper_Oxy_T3_2.7_14m
 Lower_Oxy_T3_0.3_25m
 Lower_Oxy_T3_2.7_25m
 Upper_Oxy_T5_0.3_35m
 Upper_Oxy_T5_2.7_35m
 Lower_Oxy_T5_0.3_45m
 Lower_Oxy_T5_2.7_45m
 Upper_OMZ_T3_0.3_55m
 Upper_OMZ_T3_2.7_55m
 Upper_OMZ_T5_0.3_60m
 Upper_OMZ_T5_2.7_60m
 Core_OMZ_T3_0.3_250m
 Core_OMZ_T3_2.7_250m
 Core_OMZ_T5_0.3_250m
 Core_OMZ_T5_2.7_250m
 Mesopelagic_T3_0.3_750m
 Mesopelagic_T3_2.7_750m
 Bathyal_Sed_B12_529m
 Bathyal_Sed_B08_539m
 Bathyal_Sed_B22_545m
 Bathyal_Sed_B07_920m
 Bathyal_Sed_B05_957m
 Bathyal_Sed_B11_1113m
 Bathyal_Sed_B04_1200m
 Hadal_Sed_A10_0_1cm_7734m
 Hadal_Sed_A10_1_2cm_7734m
 Hadal_Sed_A10_2_3cm_7734m
 Hadal_Sed_A5_0_1cm_7890m
 Hadal_Sed_A5_1_2cm_7890m
 Hadal_Sed_A5_2_3cm_7890m
 Hadal_Sed_A4_0_1cm_8063m
 Hadal_Sed_A4_1_2cm_8063m
 Hadal_Sed_A4_2_3cm_8063m

PG PG-DAG-33:1
 PG-DAG-34:3
 PG-DAG-35:1
 PG-DAG-36:2
PE PE-DAG-34:2
 PE-DAG-33:0
 PE-DAG-31:0
 PE-DAG-32:0
 PE-DAG-34:2
PC PC-DAG-35:0
 PC-DAG-30:0
 PC-3DAG-28:0
 PC-DAG-1:0
PME/PDME PME-DAG-30:1
 PME-DAG-30:0
 PME-DAG-31:0
 PDME-DAG-32:0
 PME-DAG-32:0
MGDG MGDG-30:1
 MGDG-28:0
 MGDG-30:0
 MGDG-32:1
DGDG DGDG-30:2
 DGDG-30:0
 DGDG-34:2
 DGDG-28:0
 DGDG-32:0
SQDG SQDG-30:0
 SQDG-28:0
 SQDG-32:0
 SQDG-29:0
DGTA DGTA-34:1
 DGTA-28:0
 DGTA-32:1
 DGTA-34:2
DGTS DGTS-34:0
 DGTS-OH-34:1
 DGTS-32:1
 DGTS-28:0
DGCC DGCC-42:6
 DGCC-27:0
 DGCC-26:0
 DGCC-32:0



- Phospholipids
- Glycolipids
- Betaine lipids