



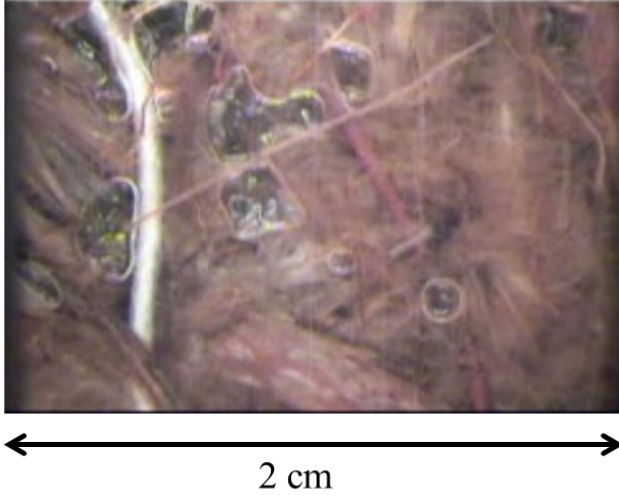
*Supplement of*

## **Evaluating alternative ebullition models for predicting peatland methane emission and its pathways via data–model fusion**

**Shuang Ma et al.**

*Correspondence to:* Yiqi Luo ([yiqi.luo@nau.edu](mailto:yiqi.luo@nau.edu))

The copyright of individual parts of the supplement might differ from the article licence.



**Figure S1:** Small bubbles at 20cm depth belowground, captured by manual minirhizotron at treed area from an ambient plot, August, 2016. Photo credit: John Latimer and Colleen M Iversen.