



Supplement of

A Numerical reassessment of the Gulf of Mexico carbon system in connection with the Mississippi River and global ocean

Le Zhang and Z. George Xue

Correspondence to: Z. George Xue (zxue@lsu.edu)

The copyright of individual parts of the supplement might differ from the article licence.

Supplementary Materials

Figure S1: Direct comparison between cruise underway $p\text{CO}_2$ data (Obs) and model result (Model), the spatial distribution over twelve months.

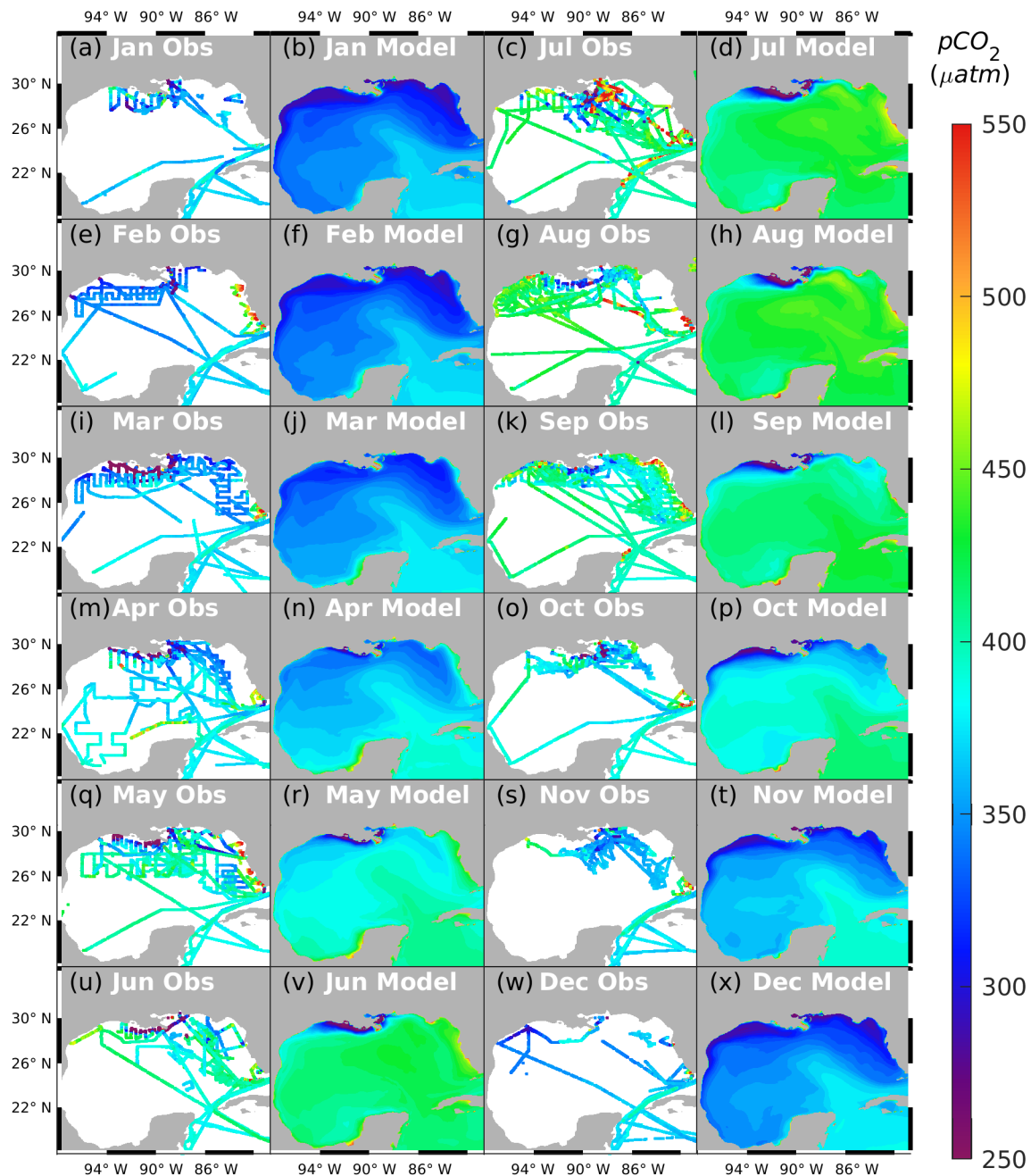


Figure S2: Direct comparison between cruise underway pCO_2 data (data downloaded from <https://www.ncei.noaa.gov/access/oads/>) and model-simulated spatial means (daily mean with 1σ) over NGoM and Open GoM. Cruise data is monthly averaged, and its mean and one standard deviation are shown in the plot as black dots and grey bars, respectively.

10

