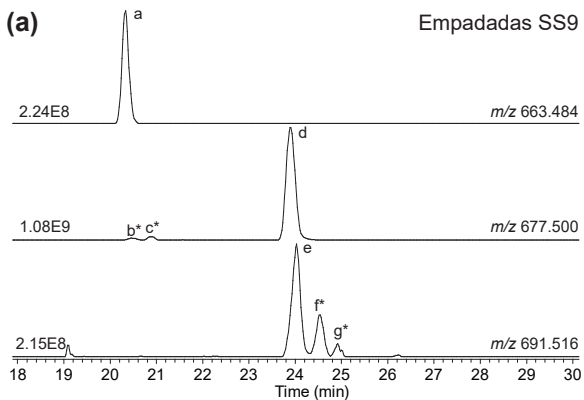
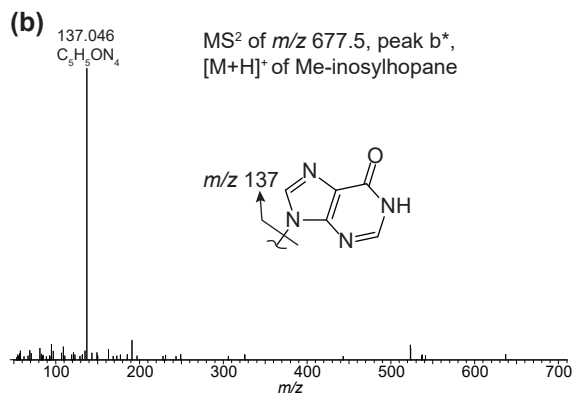
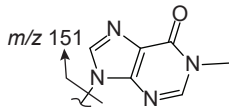


Empadadas SS9



(c) 151.061
C₆H₇ON₄

MS² of m/z 691.5, peak f*,
[M+H]⁺ of Me-N1-methylinosylhopane



(d) 151.061
C₆H₇ON₄

MS² of m/z 691.5, peak g*,
[M+H]⁺ of Me-N1-methylinosylhopane

