



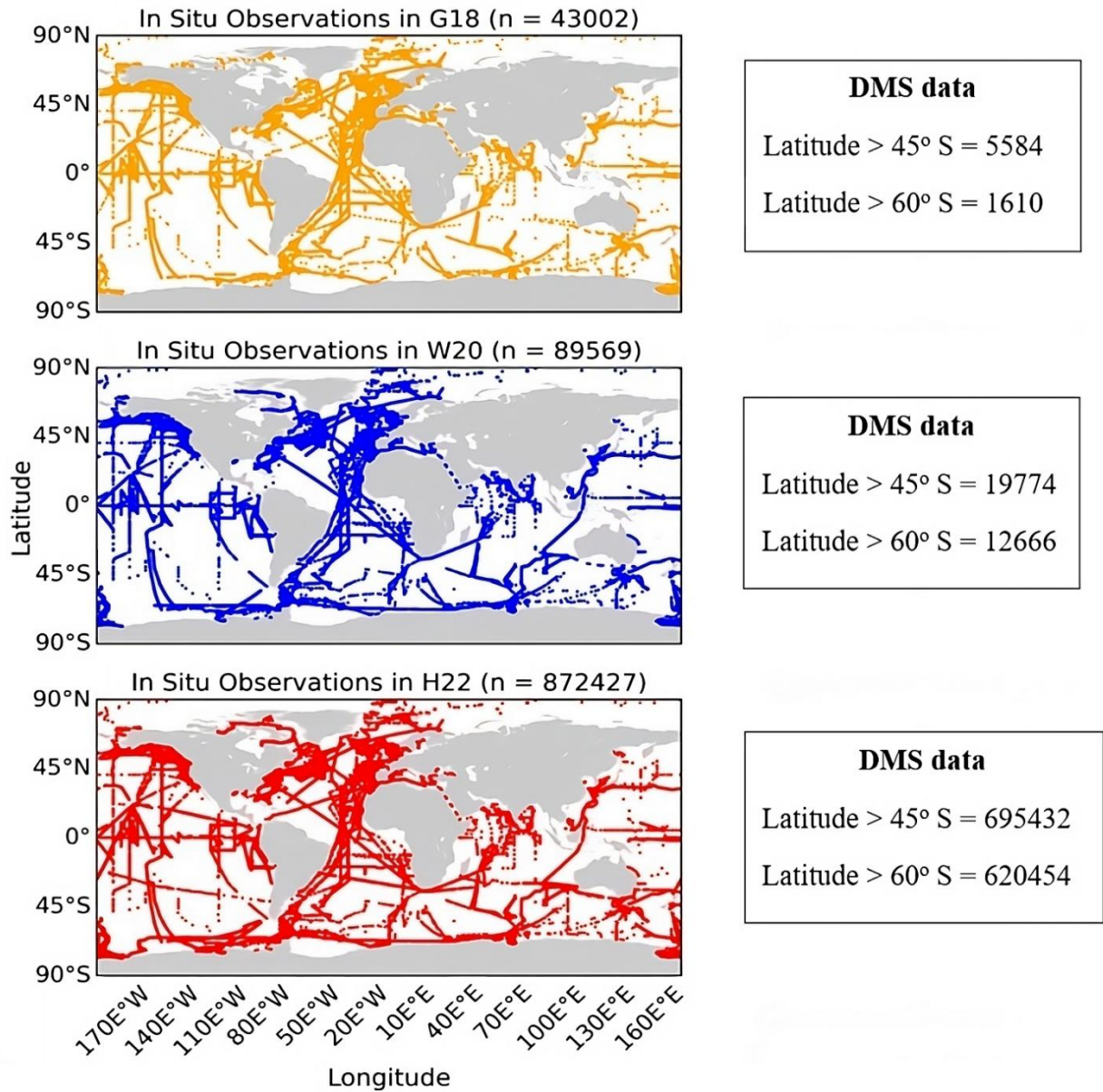
*Supplement of*

## **Dimethyl sulfide (DMS) climatologies, fluxes, and trends – Part 1: Differences between seawater DMS estimations**

**Sankirna D. Joge et al.**

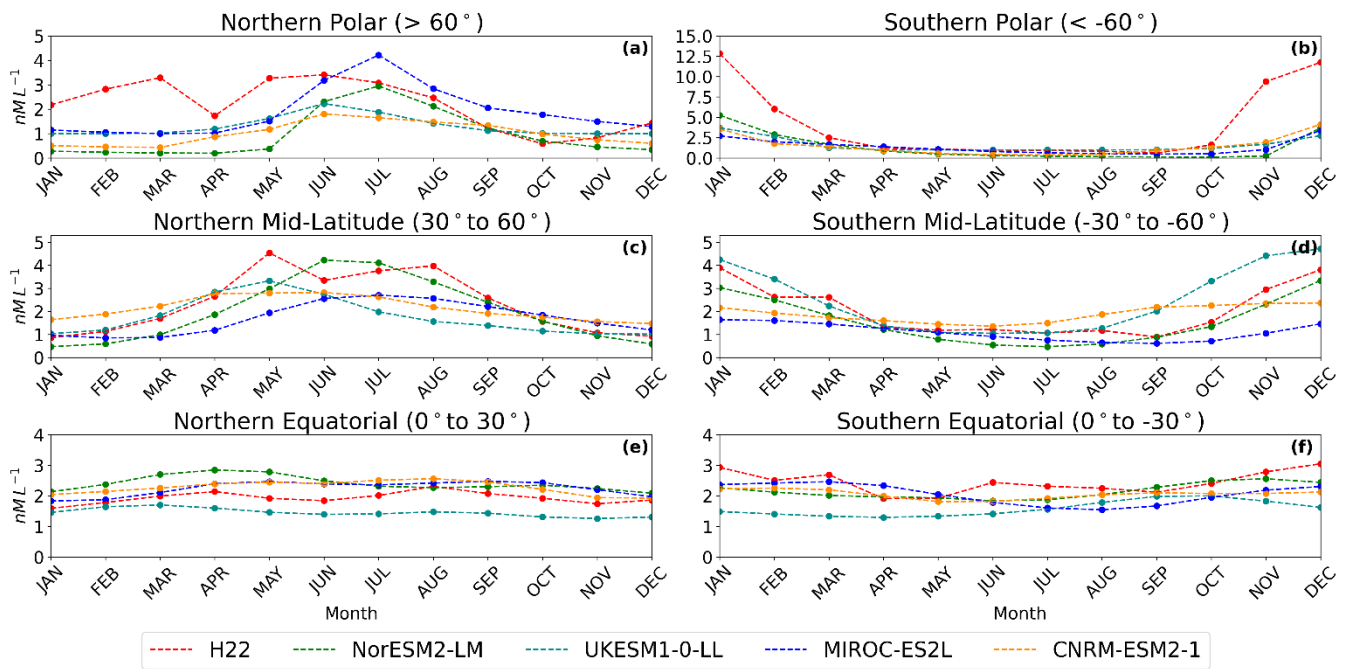
*Correspondence to:* Anoop S. Mahajan (anoop@tropmet.res.in)

The copyright of individual parts of the supplement might differ from the article licence.

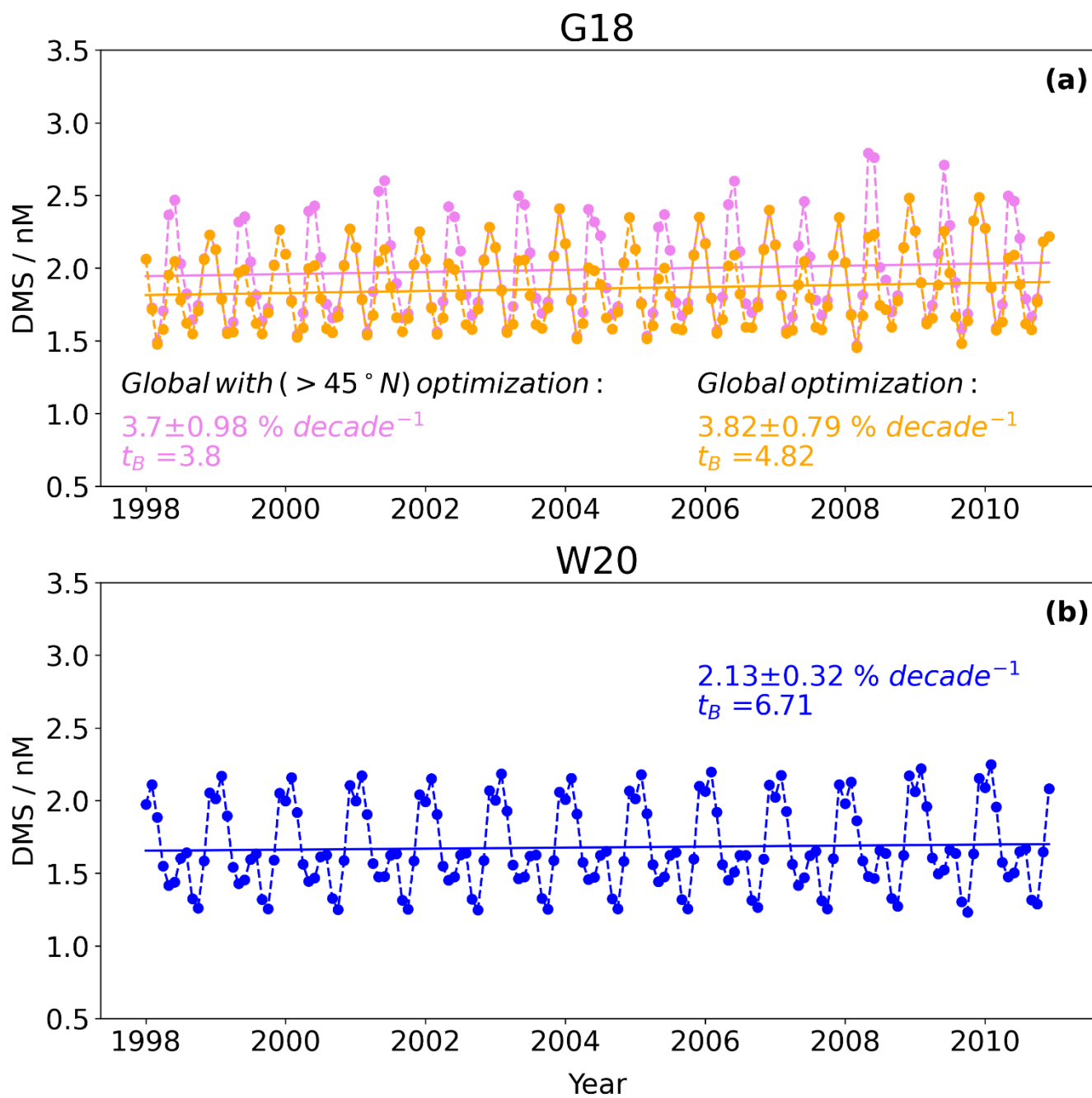


**Figure S1:** In situ DMS observations used in G18, W20 and H22.





**Figure S3:** Latitudinal means for each month of CMIP6 models described in section 3.4 along with H22 climatology.



**Figure S4:** Inter-annual trends in all the seawater DMS concentrations for (a) G18 and (b) W20. The inter-annual trend is significant and positive. The trend is calculated using the bootstrap resampling method. In G18, trend is again positive and significant if we use optimized coefficients in parameterization for  $> 45^\circ \text{N}$ .