



Supplement of

The role of nitrogen and iron biogeochemical cycles in the production and export of dissolved organic matter in agricultural headwater catchments

Thibault Lambert et al.

Correspondence to: Thibault Lambert (tibo.lambert@gmail.com)

The copyright of individual parts of the supplement might differ from the article licence.

Figure S1 – Long-term trends in dissolved organic carbon (DOC) concentrations measured in streams in Brittany over the 2007-2020 period based on public data. Trends were determined based on Mann-Kendall tests with a p -value of 0.05. Over 76 streams, 11 showed a positive increasing trend, 2 a negative trend, and the rest no significant evolution.

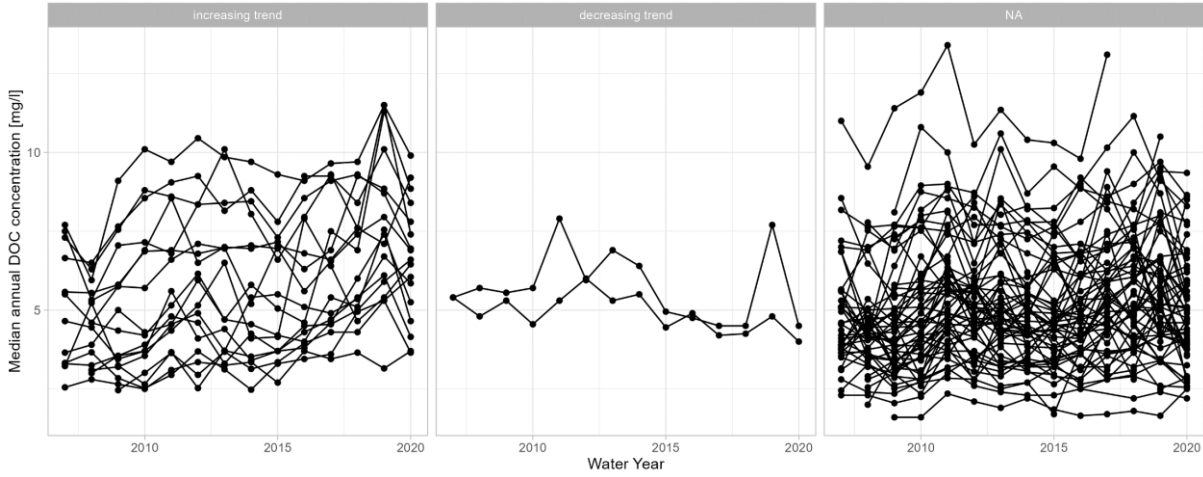


Figure S2 – Details on lysimeters (from Dupas et al., 2015).

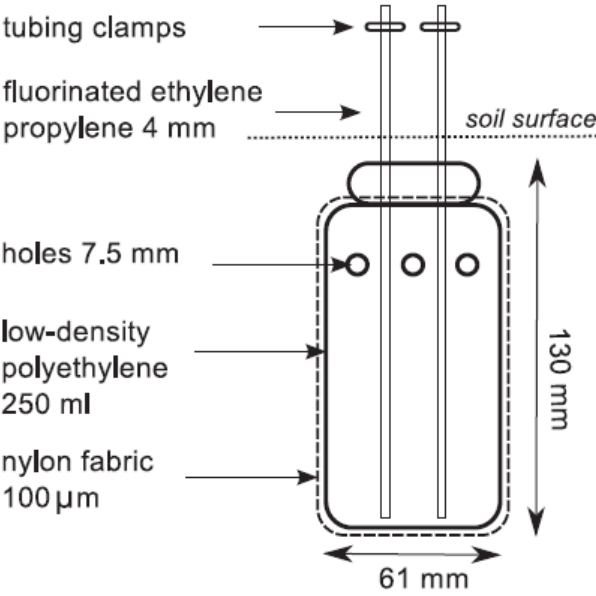
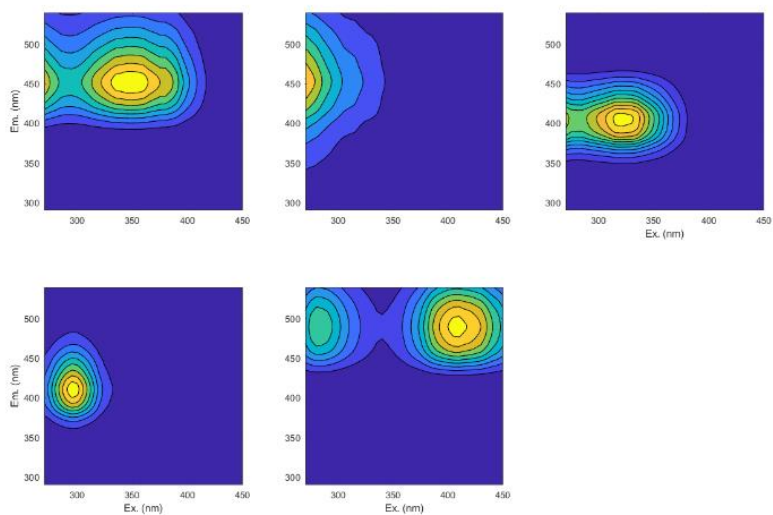


Figure S3 – A) Loadings of PARAFAC components identified in this study and B) results from the split half analysis.

A)



B)

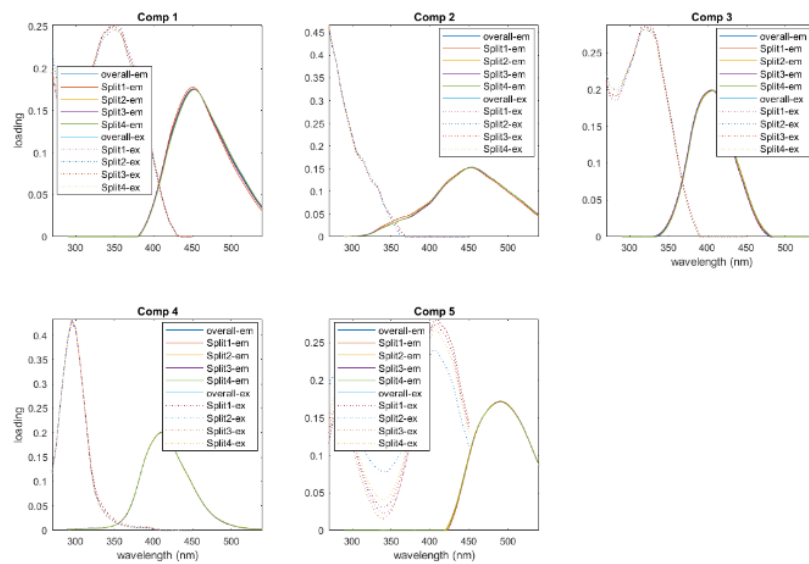


Figure S4 – Correlation coefficients of the different variables with the five first dimension of the PCA.

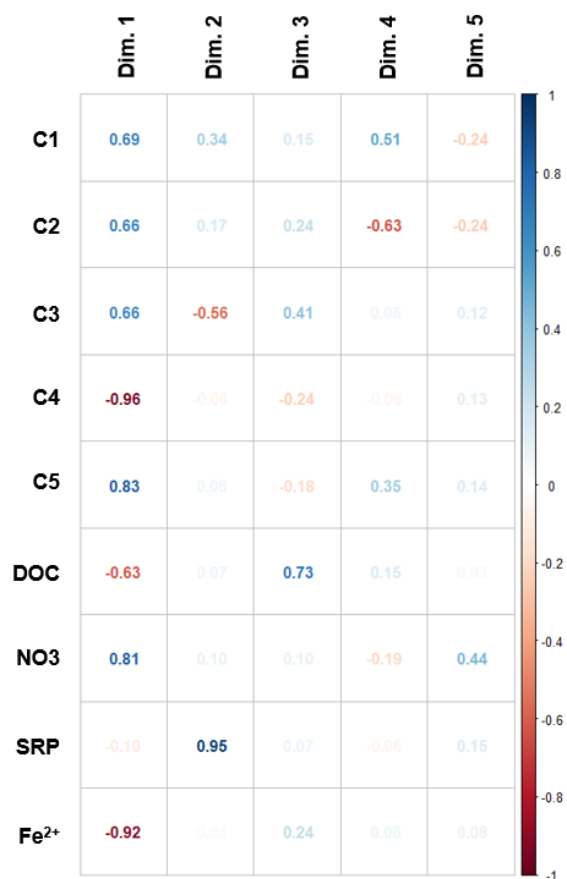


Figure S5 – Correlation between pH and DOC concentrations for all lysimeters and all dates.

