



Long-term variations in pH in coastal waters along the Korean Peninsula

Yong-Woo Lee¹, Mi-Ok Park¹, Seong-Gil Kim¹, Tae-Hoon Kim², Yong Hwa Oh³, Sang Heon Lee⁴, and DongJoo Joung^{4,5}

¹Marine Environment Monitoring Department, Korea Marine Environment Management Corporation, Busan, Republic of Korea

²Department of Oceanography, Faculty of Earth Systems and Environmental Sciences, Chonnam National University, Gwangju, Republic of Korea

³Department of Convergence Study on the Ocean Science and Technology, Korea Maritime and Ocean University, Busan, Republic of Korea

⁴Department of Oceanography, Pusan National University, Busan, Republic of Korea

⁵Institute for Future Earth, Pusan National University, Busan, Republic of Korea

Correspondence: DongJoo Joung (dongjoo.joung@pusan.ac.kr)

Received: 17 June 2024 – Discussion started: 25 June 2024

Revised: 25 October 2024 – Accepted: 27 November 2024 – Published: 6 February 2025

Abstract. Declining seawater pH, associated with rising atmospheric CO₂ levels, adversely affects marine organisms and ecosystems, thereby posing a considerable risk to coastal fisheries and economies. However, the effects of long-term pH variations in coastal waters remain poorly understood. In this study, we investigated the variability in pH in the coastal waters of Korea over an 11-year period (2010–2020) and sought to identify the principal drivers of pH fluctuations. Unlike the persistent pH declines observed in the open oceans and other coastal systems, Korean coastal waters showed no persistent pH variation, thus indicating that local biogeochemical processes may have a greater influence than atmospheric CO₂ in determining aquatic pH. Analysis of environmental data including temperature, salinity, chlorophyll *a*, and dissolved oxygen (DO) revealed a strong correlation between pH and DO. However, instances of pH changes exceeding those predicted by DO depletion alone indicate the influence of additional biogeochemical factors. As global seawaters warm, reduction in DO is anticipated to cause a further decline in the pH of coastal waters. This trend could have a pronounced influence on Korean coastal waters, which support extensive aquaculture operations integral to the local and national economies. Consequently, high-frequency monitoring is essential for extending the current time series and predicting future water quality.

1 Introduction

The alarming increase in atmospheric carbon dioxide (CO₂) poses a significant threat to the global climate. Since the industrial revolution, atmospheric CO₂ concentrations have almost doubled, reaching 420 ppm at Mauna Loa Observatory, Hawaii (<https://gml.noaa.gov>, last access: 1 June 2024). Oceanic and terrestrial biospheres have been estimated to absorb approximately 50 % of this increase in atmospheric CO₂ (Friedlingstein et al., 2022), leading to negative effects on marine organisms. Currently, it is estimated that oceans have absorbed approximately 26 % of the total anthropogenically derived CO₂ released between 1850 and 2020 (Canadell et al., 2021), with an estimated cumulative uptake of 170 ± 35 GtC, more than two-thirds of which have occurred post-1960. Compared with the 1.1 ± 0.4 GtC yr⁻¹ value obtained in the 1960s, the oceanic CO₂ sink increased to 2.8 ± 0.4 GtC yr⁻¹ during the period from 2011 to 2020 (Canadell et al., 2021).

Although air–sea gas exchange is considered the primary pathway for oceanic CO₂ uptake, riverine inputs can make a significant contribution in the coastal areas of river-dominated estuaries (Cai, 2011). Having dissolved in seawater, CO₂ undergoes a series of chemical reactions, in which CO₂ reacts with water to form carbonic acid (H₂CO₃), which

dissociates into hydrogen and bicarbonate (HCO_3^-) ions, of which the bicarbonate ions further dissociate to carbonate ions (CO_3^{2-}) by releasing a further hydrogen ion. This process increases the concentration of hydrogen ions, thereby lowering the seawater pH and causing oceanic acidification (OA). Indeed, the increase in atmospheric CO_2 has already led to a reduction in oceanic pH, as evidenced by long-term datasets such as the Hawaii Ocean Time-series (HOT), the Bermuda Atlantic Time-series Study (BATS), and the European Station for Time-series in the Ocean of the Canary Islands (ESTOC), which have recorded pH declines of approximately 0.02 per decade since the 1980s (Bates et al., 2014). Additionally, surface water pH in the open ocean has dropped by 0.1 to 0.2 since pre-industrial times due to anthropogenically derived CO_2 (Pelejero et al., 2005), with projections indicating a further decline of 0.3 to 0.4 by the end of the 21st century. This would correspond to an approximate 150 % increase in H^+ concentrations ($[\text{H}^+]$) and a 50 % reduction in CO_3^{2-} concentrations (Orr, 2005).

Ocean acidification reduces carbonate ion concentrations in seawater by increasing $[\text{H}^+]$, posing a significant threat to calcareous marine organisms. The reduction in calcium carbonate (CaCO_3) saturation in surface waters, linked to OA, is a well-documented phenomenon that has been established based on the findings of models, field surveys, and long-term monitoring studies (Caldeira and Wickett, 2003; Feely et al., 2004, 2008; Orr et al., 2005; Solomon et al., 2007). For example, long-term monitoring at the HOT station has revealed that surface water pCO_2 increases are correlated with atmospheric CO_2 , driving increases in dissolved inorganic carbon and reductions in CaCO_3 saturation (Chen et al., 2023; Takahashi et al., 2009; Doney, et al., 2009; Doney et al., 2007). Lower carbonate ion concentrations result in CaCO_3 undersaturation, thereby adversely affecting shell-forming marine organisms such as plankton, mollusks, echinoderms, and corals (Doney et al., 2007; Smith and Buddemeier, 1992; Kleypas and Yates, 2009; Feely et al., 2016; Orr et al., 2005; Kroeker et al., 2013; Nilsson et al., 2012). This undersaturation can reduce the growth, locomotion, reproductive capacity, and homeostasis in these organisms if they are unable to regulate calcification processes (Hendriks et al., 2015). Consequently, OA can have pronounced effects on the structure and function of marine ecosystems at multiple trophic levels.

In addition to the input of atmospheric CO_2 , environmental changes can exacerbate OA. For example, along the Louisiana shelf of the northern Gulf of Mexico, where severe bottom-water hypoxia has been an annual feature since the mid-1980s, Cai et al. (2011) reported a pH reduction of 0.01 over the period between 1980 and 2010, which they attributed to anthropogenic atmospheric CO_2 inputs and CO_2 release during hypoxia. Similarly, these authors found evidence to indicate that pH declines in the East China Sea were linked to coastal eutrophication and low-oxygen-related CO_2 inputs. Globally, hypoxic regions are expanding in size and persisting for longer periods of time (Breitburg et al., 2018),

thereby tending to indicate a future intensification of coastal pH declines.

Despite these general trends, the changes in oceanic CO_2 uptake and the resultant OA are not globally uniform. For example, the Mediterranean Sea has been established to absorb comparatively more atmospheric CO_2 , leading to a reduction in pH of 0.0044 yr^{-1} (Hassoun et al., 2015; Palmiéri et al., 2015; Flecha et al., 2015, 2019). In contrast, in the northern Pacific Ocean, the surface pH declined by only 0.0012 to 0.0003 yr^{-1} from 1965 to 2010, which is approximately 4-fold lower than that observed in the Mediterranean Sea (Watanabe et al., 2018). This discrepancy in the rates of pH decline is assumed to be associated with regional variations in biogeochemical properties such as nutrient levels and freshwater inputs, which influence alkalinity (Flecha et al., 2015).

Although long-term pH monitoring is a well-established procedure in the study of open-ocean systems, notably fewer studies have been conducted in coastal zones. In contrast to the open oceans, in which pH tends to decline consistently in response to increasing atmospheric CO_2 , coastal pH trends can differ significantly on account of their complex physical and biogeochemical dynamics, including nutrient and organic matter inputs from river runoff and groundwater discharge, oceanic forces (waves, tides, and currents), and human activities, all of which are subject to seasonal variations (Crossland et al., 2005; Flecha et al., 2012). Consequently, coastal pH values tend to vary widely and be characterized by different long-term trends (Borges and Gypens, 2010; Carstensen and Duarte, 2019; Bates et al., 2014). For example, Carstensen and Duarte (2019) have reported a broad range of pH trends (-0.023 to 0.023 yr^{-1}), predominantly associated with terrestrial inputs, whereas observations from Dutch coastal zones have revealed rates of pH change exceeding those predicted from CO_2 uptake alone, indicating significant influences from other biogeochemical processes, possibly associated with nutrient inputs (Provoost et al., 2010). However, given the multiple biogeochemical processes involved, coastal pH variations have not been well studied. For example, despite the presence of semi-closed bays, rivers, and fish farms that could influence aquatic pH changes, there have been no studies reporting long-term trends in pH in Korean coastal waters. The coastline of the southern part of South Korea has a ria landform with numerous semi-enclosed bays and fish farms. The western coast is characterized by high tidal prisms, extensive land reclamation, and large coastal cities, whereas the east coast has a narrow continental shelf, has a geographically simpler coastline with no bays or fish farms, and is less populated, making it relatively undisturbed. Consequently, the diverse Korean coastline can serve as an excellent test bed for investigating how different biogeochemical settings affect pH over a long timescale. In this study, we accordingly investigated trends of pH, temperature, salinity, dissolved oxygen (DO), and chlorophyll *a* (chl *a*) in the surface and bottom coastal

seawaters of Korea as part of ongoing monitoring programs inaugurated in 2010. Using data collected from 2010 to 2020, we examined seasonal and spatial variations in pH and identified the predominant factors influencing these changes. Our results will provide a quantitative reference for future studies on coastal carbon dynamics and the impacts of atmospheric CO₂-induced warming and changing environmental conditions.

2 Methods and materials

2.1 Data collection

The dataset used in this study was derived from a monitoring program that has been conducted by the Korea Marine Environment Management Corporation (KOEM) since 2010 to monitor the quality of water along the entire Korean coastline (Fig. 1). This program has included the monitoring of more than 279 sites at 64 locations, in which water quality parameters were measured in both surface and bottom waters four times annually (February, May, August, and November) (Table S1 in the Supplement). Detailed information on the program can be found at the KOEM website (<https://www.meis.go.kr>, last access: 1 April 2024). In this study, we examined data collected from 2010 to 2020, comprising approximately 28 966 measurements for each selected parameter, which we used to compile two average datasets: one for the different coastal regions (south, west, and east), and one for the entire Korean coastline.

In this study, we analyzed the long-term variations in seawater pH, temperature, salinity, DO concentrations, and chl *a* levels along the Korean coastline. All sampling locations were situated within 6 km of the shoreline, predominantly in shallow waters with depths < 10 m, except for a few sites along the eastern coast. These sites are influenced by multiple factors, including riverine inputs, land use patterns, and climatic conditions, all of which are susceptible to the effects of global warming and climate change.

2.2 Site description

Korea's coastal geography is characterized by a highly mountainous east coast and plateau-like south and west coasts, giving rise to less steep continental slopes in the south and west. Large river systems are found in the west and south, though not in the east. The west coast, bordering the Yellow Sea, features a typical drowned valley shoreline with shallow waters, a maximum depth of approximately 40 m, and extensive muddy tidal flats, which account for approximately 3 % of the world's entire tidal flats. This area experiences high water turbidity and macrotidal conditions (tidal amplitudes up to 5 m) and has undergone substantial land reclamation for agricultural, industrial, and residential uses, which have contributed to altering currents, sediment transport, and biogeochemical properties (Williams et al., 2014,

2015). The coastline is influenced by the Korean Coastal Current, which receives inputs from the warm Kuroshio Current in summer and the Yellow Sea Cold Current in winter (Hwang et al., 2014); three major rivers (the Han, Geum, and Yeongsan), along with numerous streams, drain into this region.

The southern coast features ria estuaries with moderate relief and V-shaped valleys. It is dotted with numerous islands and semi-enclosed bays, resulting in slow currents and a semi-diurnal tidal range of 1 to 3 m, and it also supports extensive fish farming operations (Williams et al., 2013). Major rivers such as the Nakdong and Seomjin, along with numerous tributaries, discharge freshwater into the coastal waters. Recent dam construction in the Nakdong River system has, however, significantly reduced freshwater and nutrient inputs in this region (Williams et al., 2013). The southern seas are influenced by the Tsushima Current, a branch of the Kuroshio Current, which transports high-temperature, high-salinity waters with occasional inputs from the Changjiang diluted water during summer (Lie and Cho, 1994). Compared with the southern and western coasts, the eastern coastline of Korea is relatively simple and monotonous. Due to its mountainous terrain, the eastern coast features a narrow continental shelf with a steep slope, and given that there are no major rivers with outlets along this coast, most materials, including nutrients and organic matter, are transported via the Tsushima Current, which flows along the southern coast of Korea (Jang et al., 2013).

2.3 Water collection and measurement

To examine the temporal and spatial variations in marine environmental parameters (temperature, salinity, pH, DO, and chl *a*), seawater samples were collected using 5 L Niskin bottles attached to a rosette sampler deployed on board the KOEM research vessel. Seawater temperature and salinity were measured using a CTD profiler (SBE 19plus; Sea-Bird Electronics Inc., USA). For pH measurements, we used a portable sensor (Orion Star A329; Thermo Scientific, USA) with an accuracy of ± 0.002 pH units. To minimize temperature changes, all pH measurements were performed on board immediately after water collection. Briefly, water samples were collected from both surface and bottom depths (1 m from the seafloor) using Niskin samplers, and upon retrieval, the water samples were transferred to glass containers (a beaker) using a silicone tube. Immediately after transfer, the pH sensor was immersed in the water sample, and pH readings were recorded having initially ensured that the values had stabilized, typically within a few tens of seconds. Calibration of the pH sensor was conducted daily prior to sample measurements using three standard buffer solutions (pH 4, 7, and 10) in accordance with the manufacturer's guidelines. The DO in seawater was measured using the Winkler sodium azide titration method. For chl *a* analysis, seawater samples (1 L) were collected from the surface and bottom layers and

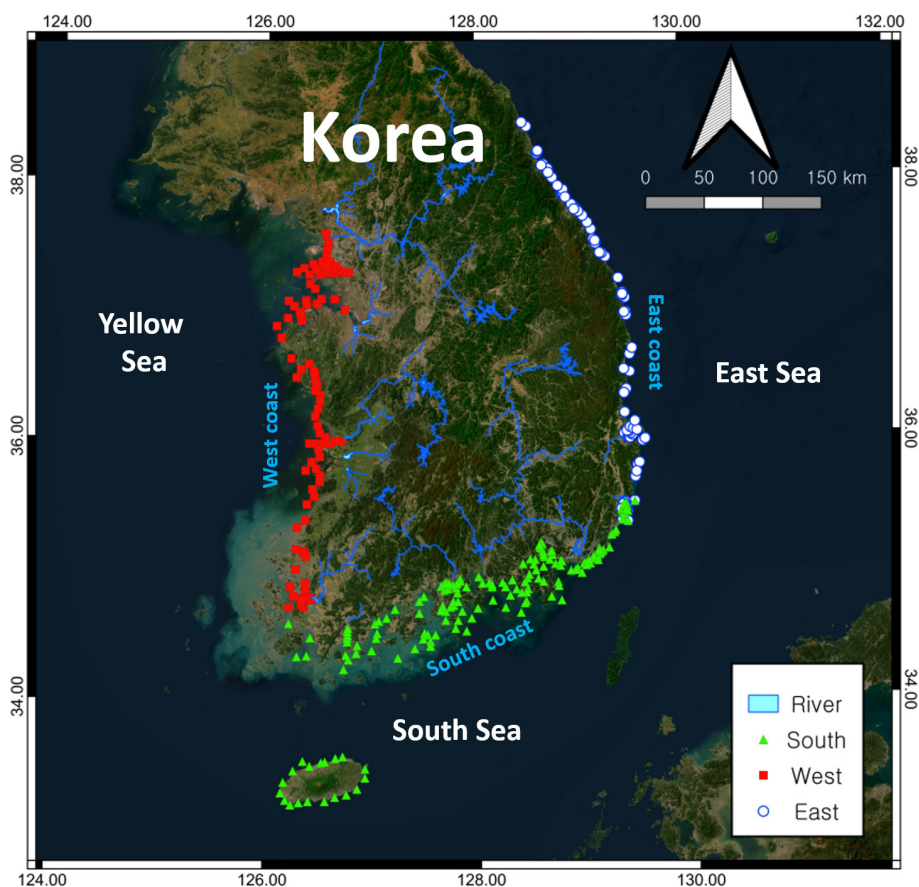


Figure 1. Sample collection sites along the Korean Peninsula. The base map was downloaded from <https://server.arcgisonline.com>, last access: 1 June 2024.

filtered on board using 0.45 μm pore-sized membrane filters (47 mm diameter), which were then stored at $-20\text{ }^{\circ}\text{C}$ until further analysis. Chl *a* was extracted from the filters and measured using a fluorometer (10AU Turner Designs, USA) in the laboratory.

2.4 Data processing

The descriptive statistics for the complete dataset are presented in Tables S1–S3 in the Supplement. For the period 2010–2020, each parameter included over 14 000 data points from 64 different locations and 279–355 sites, which were averaged for each sample collection period to produce 44 data points per parameter over the study period. These averages were calculated for the entire study area and for three distinct coastal regions (south, west, and east) to investigate inter-annual trends over the study period. Additionally, the data were classified into three geographical categories – estuaries, bays, and river mouths – data for which were collected from 47, 14, and 3 locations, respectively. On the basis of the locations, we initially specified the river mouth locations of the Nakdong, Yeongsan, and Geum rivers, corresponding to sites on the Nakdong, Mokpo, and Gunsan coastlines, re-

spectively. Thereafter, we identified 14 locations in the bay system, and the remaining locations were classified as estuaries (Table S1). Temporal trends throughout the study period were further analyzed using a centered moving average technique to remove seasonal fluctuations, while hierarchical cluster analysis was employed to identify the closest link to pH. Both analyses were performed using IBM SPSS Statistics 26 (USA).

We also obtained estimates for CO_2 -derived pH variations, for which CO_2 production was inferred from apparent oxygen utilization (AOU) using the Redfield ratio (106/138 for CO_2/O_2 ; Cai et al., 2011). The AOU was calculated by subtracting the measured dissolved oxygen concentration from the saturation concentration derived from temperature and salinity (i.e., $\text{AOU} = \text{DO}_{\text{sat}} - \text{DO}_{\text{meas}}$), and thus positive values of AOU indicate a net consumption (or depletion) of DO. To represent the degree of DO depletion or repletion, AOU was expressed as a percentage of DO depletion (or consumption) by calculating the ratio of AOU to DO_{sat} . pH variations were subsequently calculated using CO2SYS software, based on the following conditions: dissolved inorganic carbon ($1986\text{ }\mu\text{mol kg}^{-1}$), total alkalinity ($2228\text{ }\mu\text{mol kg}^{-1}$) (Hwang and Lee, 2022), total dissolved phosphate ($1\text{ }\mu\text{M}$),

and total dissolved silicate (15 μM) concentrations (KOEM). In this regard, it is important to note that the estimations assume that all CO_2 produced from oxygen depletion has a direct influence on pH, which may not invariably be the case, particularly in shallow coastal systems, wherein the CO_2 in water can be released into the atmosphere depending on currents, winds, and tides. Therefore, our assumption may overestimate the extent of pH decrease.

3 Results and discussion

3.1 Long-term trends in pH

Given its profound impact on aquatic biota, OA is of considerable concern for global warming (Raven et al., 2020; Hinga, 2002). Consequently, gaining an understanding of the OA in Korean coastal waters, in which there are a considerable number of fish and seaweed farms, is of particular importance. Variations in the average pH levels in all Korean coastal waters are depicted in Figs. 2–5 (Figs. S1–S6 in the Supplement provide a comprehensive dataset). Monthly averages for February, May, August, and November of each year revealed a pH range of between 7.96 and 8.30 (mean, 8.13; $n = 88$). Notably, the pH values recorded for bottom waters were found to be slightly lower than those of surface waters, which we assume to be attributable to the decomposition of organic matter releasing CO_2 in bottom waters, biological production, and the associated DO production in surface waters. Over the 11-year time frame, monthly averaged pH levels displayed a discernible increasing trend in both surface and bottom waters, with respective slopes of 0.000029 yr^{-1} (± 0.000007) and 0.000035 yr^{-1} (± 0.000009) (Table S4 in the Supplement). Although this regression trend appeared to be statistically significant, with an F value of 0.0003, these low regression slopes indicate that Korean coastal waters have not undergone any pronounced reduction in pH at least during the study period. This observed pH trend contrasts somewhat with the patterns reported in previous studies, which have observed declining pH trends in both coastal and open-ocean systems. For example, reductions in pH have been documented in other coastal regions worldwide, such as the Mediterranean Sea (Flech et al., 2015), Dutch coasts (Provoost et al., 2010; Hofmann et al., 2011), the Washington coast (USA; Lowe et al., 2019), and a number of other areas (refer to review articles by Duarte et al., 2013; Carstensen and Duarte, 2019; Wootton et al., 2008). Notably, these studies have reported substantial rates of decline, ranging from -0.045 to -0.0044 yr^{-1} . Moreover, Carstensen and Duarte (2019) observed that at certain sites (21 of 83), the pH of coastal waters declined even more rapidly than the rate of decline observed in the open ocean (-0.0018 yr^{-1}), driven by rising atmospheric CO_2 and variations in local salinity and primary production.

In regions geographically proximal to Korea, coastal waters in Japan and China have shown a decline in pH levels. For example, Ishida et al. (2021), who conducted a 30-year monitoring study from 1980 to 2010 at two coastal sites in Japan, revealed trends in pH change ranging from 0.0032 to -0.0068 yr^{-1} , with more pronounced declines being observed along the Pacific coastline than along the East Sea (or Sea of Japan) coast. Ishida et al. (2021) and Ishizu et al. (2019) have suggested that such regional differences could be attributed to local biophysical and chemical factors, with the Pacific coastline being influenced by the meandering Kuroshio Current, which is mainly governed by atmospheric CO_2 absorption and coastal eutrophication, leading to low DO concentrations in bottom waters, and vertical mixing off the East Sea coast. Recently, Ishizu et al. (2019) have reported long-term pH trends from over 280 sites in Japanese coastal waters based on monitoring data collected over a period of more than 30 years, which have revealed that, in a majority of the areas assessed ($> 75\%$), the annual maximum pH exhibited a decline of -0.0024 yr^{-1} . Moreover, Cai et al. (2011) found that regions such as the East China Sea and Louisiana shelf, which are characterized by seasonal bottom-water hypoxia, experienced more severe pH declines than could be attributed solely to atmospheric CO_2 . However, the findings of all these previous studies indicate that, for coastal waters, variations in pH could be governed predominantly by local biogeochemical properties.

Conversely, some sites have been found to have undergone an increase in pH, as revealed in the aforementioned study by Ishizu et al. (2019), in which the remaining 25 % of assessed sites showed an increasing trend, although these authors were unable to discern any evident geographical patterns among the sites. Additionally, Carstensen and Duarte (2019) documented a wide range of pH trends, with slopes ranging from -0.023 to 0.023 yr^{-1} . Their analysis revealed that though a larger proportion (46 of 83 sites) of coastal areas experienced a pH decline, the remaining 37 sites displayed either increasing trends or negligible changes, mirroring our observations in the present study. Hence, despite the overarching influence of global atmospheric CO_2 forcing, there are substantial regional variations in pH fluctuations. Consequently, the lack of any marked changes in pH along the Korean coastline is far from unique and reflects the complexities of pH dynamics in coastal waters, wherein local biogeochemical properties (e.g., biological productivity, chemical inputs from rivers and sediments, and alkalinity) differ from those in the open ocean and among different regions.

3.2 Local pH variations

Although we established that, overall, the variations in pH along the entire Korean coastline were not substantial, the localized changes in specific coastal regions exhibited fine-scale seasonal and vertical dynamics. Generally, pH levels were higher along the southern and eastern coasts (~ 8.15)

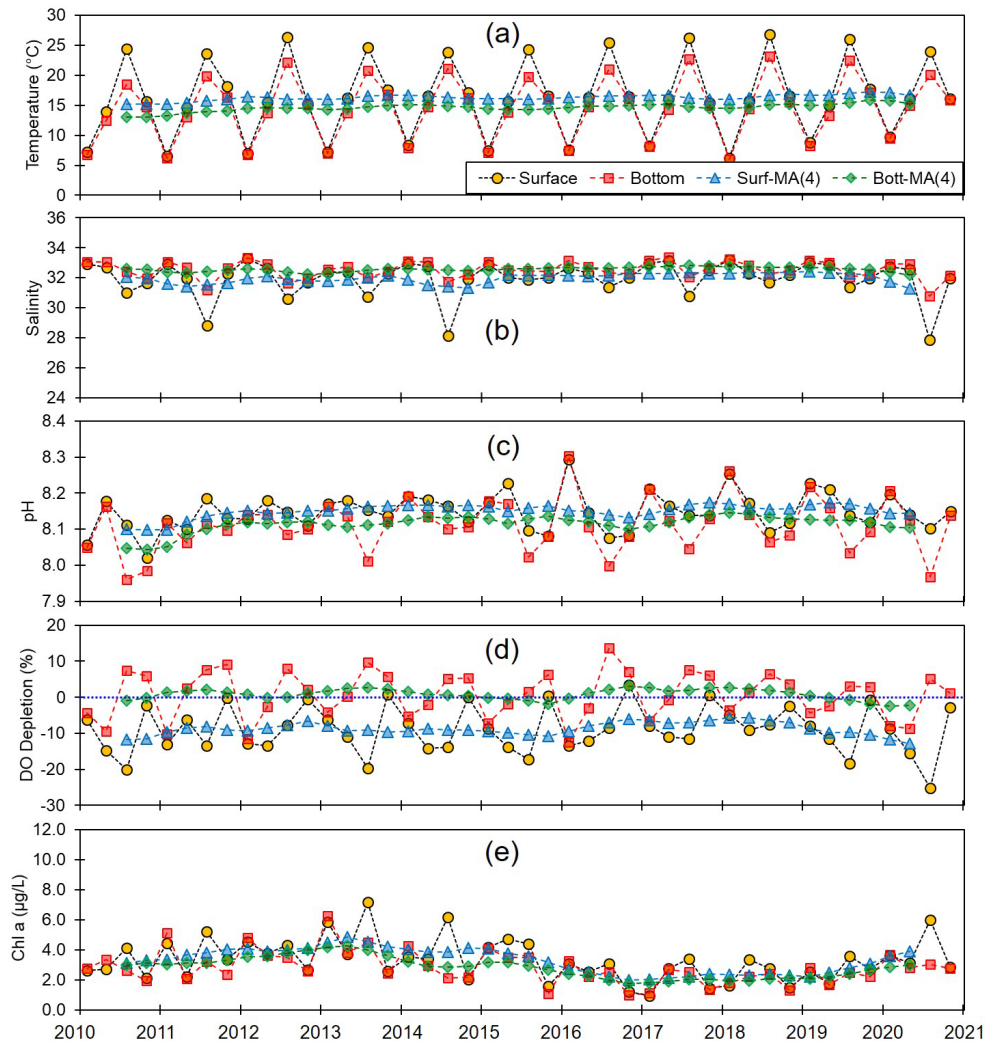


Figure 2. Monthly and centered moving averages of the parameters for the entire seas along the Korean coasts: (a) temperature, (b) salinity, (c) pH, (d) dissolved oxygen (DO) depletion, and (e) chlorophyll *a* concentration during the 2010–2020 period.

than along the western coast (~ 8.10). Moreover, seasonally, peaks and troughs in pH were observed in February and August along the southern and western coasts, respectively, whereas compared with the other regions, we observed no consistent patterns in seasonality on the east coast (Figs. 3–5). Furthermore, while we failed to detect any appreciable disparities in the pH of surface and bottom waters along the western coast, notable differences were observed between the surface and bottom waters along the eastern and southern coasts, particularly in May and August (Figs. 3–5).

Spatial variations in pH are assumed to be influenced by physiographical features. The western coast of Korea is characterized by shallow nearshore waters and a notably high tidal prism (up to 5 m). Given that our sampling sites along the western coastline predominantly had depths of less than 10 m, the substantial tidal prism and semi-diurnal tidal cycle would be presumed to promote homogeneous vertical mix-

ing. Conversely, the eastern coast features a narrow continental shelf, with water depths exceeding 100 m just a few kilometers offshore. Unlike the western coast, the tidal prism along the eastern coast is approximately 1 m; coupled with seasonal variations in coastal currents (Chang et al., 2000), this contributes to a persistent stratification, which was evident in nearly all assessed water quality parameters, with the only exception being the patterns observed in February (Fig. 5).

In terms of these physiographical characteristics, the southern coastline can be considered to be characterized by conditions intermediate between those found in the other two regions, with a tidal prism of 3 m and an average water depth of a few tens of meters. However, the southern coastline is characterized by numerous semi-enclosed bays with limited water exchange and the frequent occurrence of bottom-water hypoxia (Lee et al., 2018, 2021; Huang and An, 2022), which

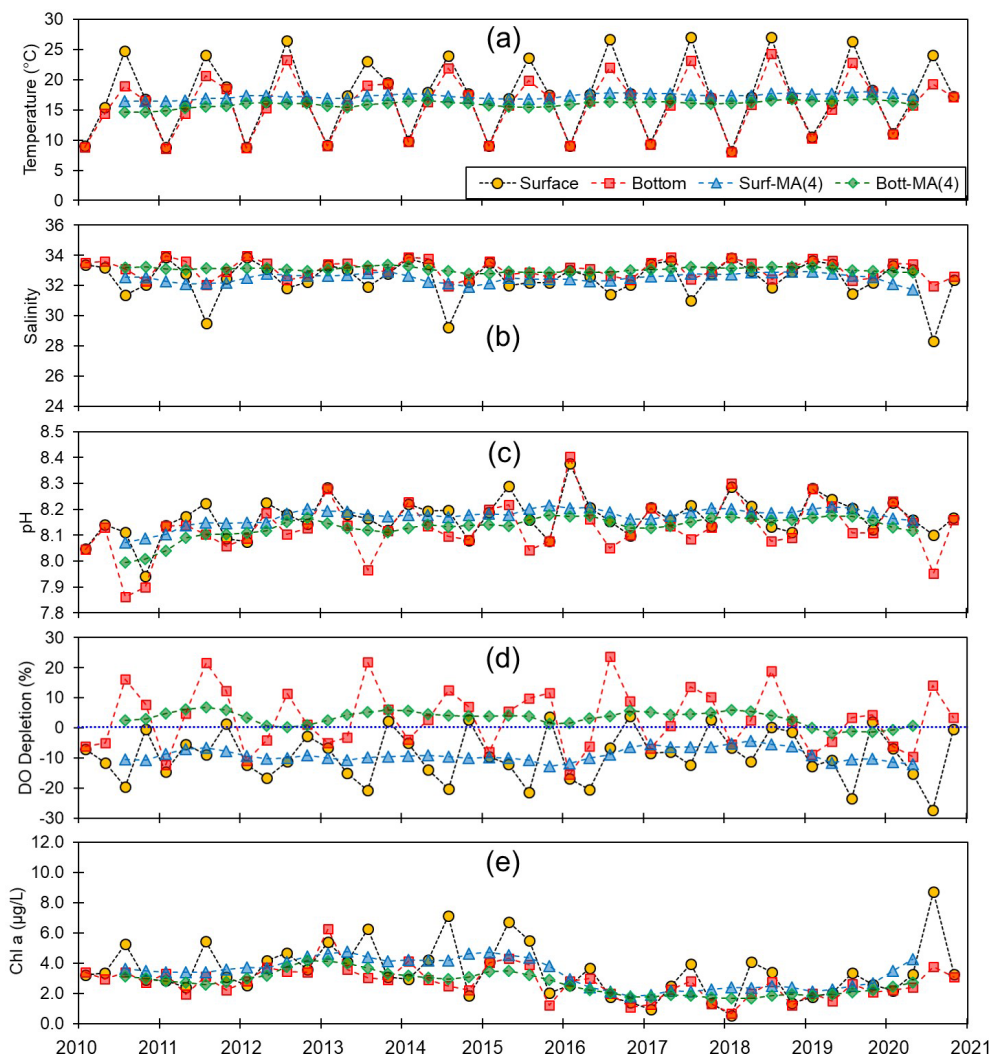


Figure 3. Monthly and centered moving averages of the parameters on the southern coast of Korea: (a) temperature, (b) salinity, (c) pH, (d) dissolved oxygen (DO) depletion, and (e) chlorophyll *a* concentration during the 2010–2020 period.

contribute to the development of more pronounced vertical gradients in water quality parameters, including pH, during summer compared to winter (Fig. 3). For example, bottom-water hypoxia induces the release of CO_2 and subsequent accumulation in the stratified water column, and eventually this CO_2 will cause a reduction in pH (Cai et al., 2011).

Among the assessed aquatic systems, we found that variation in the average pH within estuaries was relatively narrow, ranging from 8.00 to 8.25, whereas that in the other two systems showed a notably wider range, from 7.75 to 8.4. Moreover, compared with the estuarine and river mouth sites, we detected more pronounced surface-to-bottom differences in average pH in the bay systems, with the bottom-water pH in bays being generally lower than that in the other locations. This difference can probably be ascribed to the lower DO concentrations in the bottom waters of bays, thereby contributing to CO_2 -induced acidification. The inter-

annual trends in pH and other parameters are presented in Table S4. Notably, within all three of the assessed coastal regions, temperature showed a clear increasing trend of 0.001 °C yr^{-1} in both surface and bottom waters, whereas the other assessed parameters, including pH, showed no significant trends. Overall, the three coastal regions (south, west, and east) and three assessed aquatic systems (estuary, bay, and river mouth) showed no significant inter-annual trends with respect to pH or other parameters across all regions.

3.3 Factors influencing pH variations

The variations in pH within coastal systems are influenced by a multitude of physical, biogeochemical, and ecological factors and processes, including temperature, salinity, DO, and biological production and/or respiration, which influence gas solubility, alkalinity, and CO_2 dynamics within

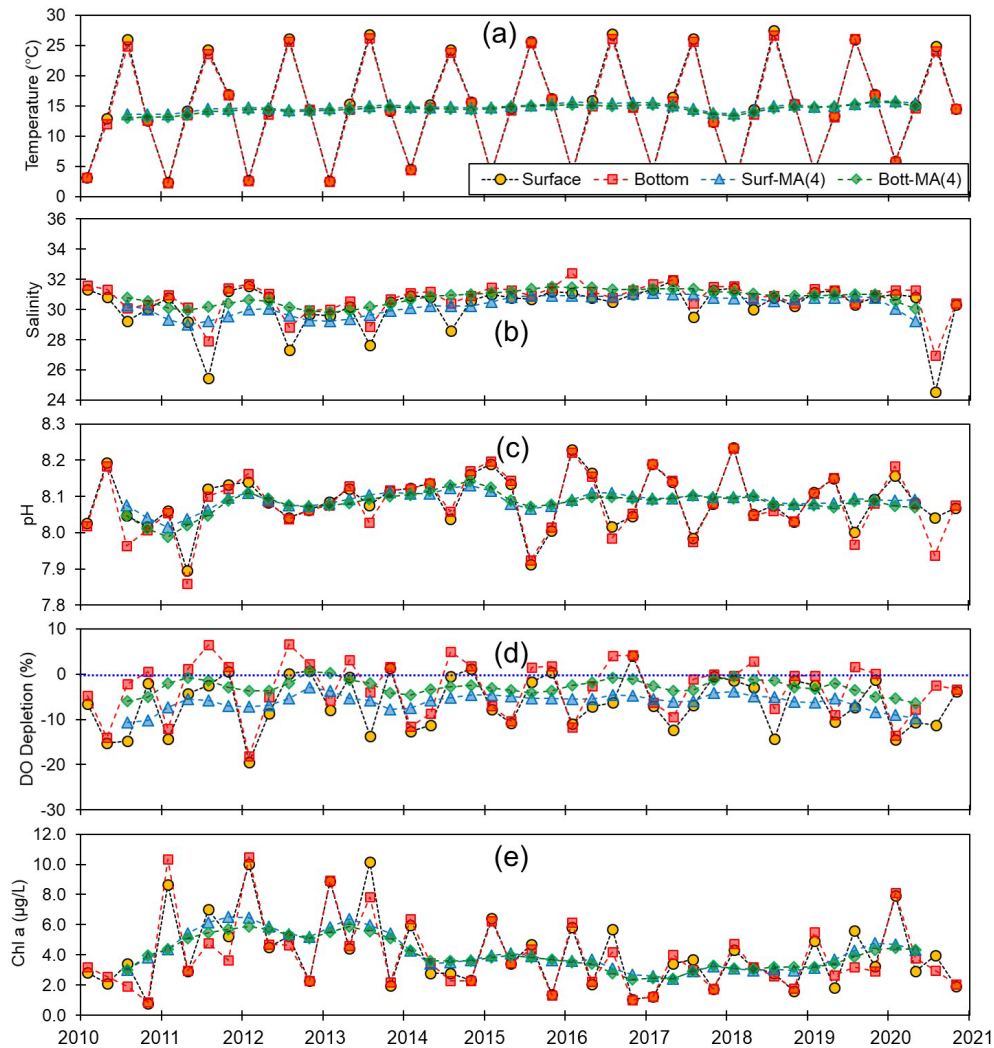


Figure 4. Monthly and centered moving averages of the parameters on the western coast of Korea: (a) temperature, (b) salinity, (c) pH, (d) dissolved oxygen (DO) depletion, and (e) chlorophyll *a* concentration during the 2010–2020 period.

the water column (Doney, 2008; Dore et al., 2009; Duarte et al., 2013). Additionally, by affecting open-ocean endmember conditions, fluctuations in currents can influence pH values (Ishida et al., 2021).

By modulating gas solubility, water temperature can play a key role in pH regulation, with colder water having the capacity to retain larger amounts of gases than warmer water, whereas warmer water promotes degassing, which often results in lower pH levels. Additionally, increases in temperatures can alter thermodynamic properties, raising the dissociation constants of carbonic acid (H_2CO_3) and bicarbonate (HCO_3^-), thereby increasing acidity. However, the most pronounced effects of temperature on pH are associated with its influence on different biogeochemical processes. For example, elevated temperatures can intensify water column stratification, thereby contributing to bottom-water hypoxia, which leads to CO_2 accumulation and redox reactions that

further promote reductions in pH. However, in coastal environments, the effects of temperature on pH are typically less pronounced than those attributable to other factors such as DO concentration and primary productivity. Consequently, long-term pH trends may show a negative correlation with temperature. In this study, we have not observed significant correlation between pH and temperature in either the surface or bottom waters (Figs. S7–S10 and Table S5 in the Supplement). Despite a clear increasing trend in water temperature, at a rate of 0.001 yr^{-1} , observed across all regions of the Korean coast (Fig. 2 and Tables S4 and S5), the weak correlation between pH and temperature suggests that temperature is not the primary driver of pH variation in Korean coastal waters.

Salinity serves as an indicator of freshwater input, which typically has a lower alkalinity and is a key factor influencing pH dynamics (Saraswat et al., 2015; Carstensen and Duarte, 2019). However, watersheds underlain by limestone bedrock

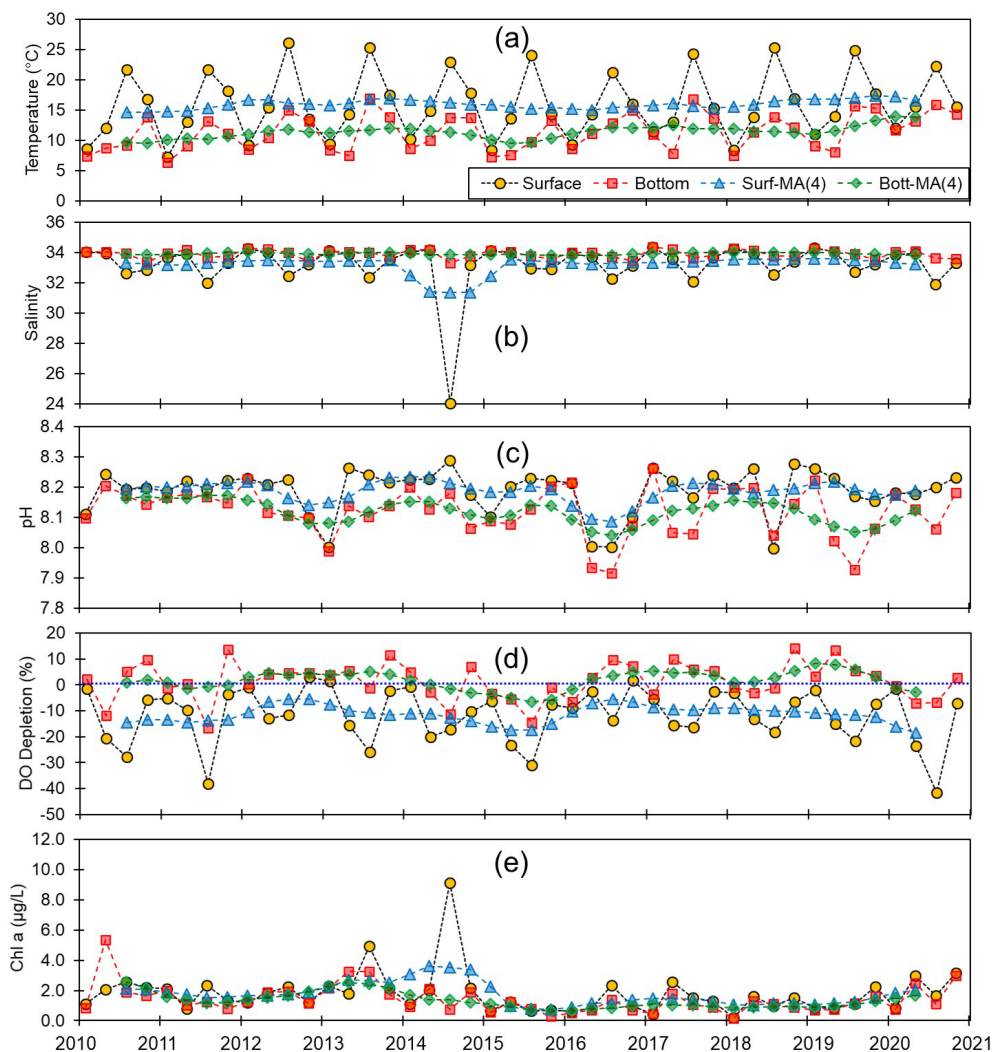


Figure 5. Monthly and centered moving averages of the parameters on the eastern coast of Korea: (a) temperature, (b) salinity, (c) pH, (d) dissolved oxygen (DO) depletion, and (e) chlorophyll *a* concentration during the 2010–2020 period.

typically exhibit higher alkalinity than oceanic endmembers. Although this is not a characteristic of the watersheds in Korea, in which alkalinity generally remains within the typical range for rivers (Hwang and Lee, 2022), a positive correlation between pH and salinity is often observed in regions with low salinity (< 20), in which the buffering capacity is minimal (Carstensen and Duarte, 2019). At most of our study sites, salinity was greater than 23, which would tend to indicate a sufficient alkalinity to buffer any moderate changes in pH. Nevertheless, we failed to observe any correlations between pH and salinity (Table S5), implying that salinity (or freshwater input) may not be the primary driver of pH changes in Korean coastal waters.

Primary production, as indicated by chl *a* levels, can directly influence pH by consuming CO_2 via photosynthesis, particularly in surface waters (Soetaert et al., 2007). Accordingly, elevated levels of pH can be detected during the

hours of daylight as a consequence of photosynthetic activity (Cummings et al., 2019; Wootton et al., 2008; Ono et al., 2024). However, over the 11-year period of the present study, we detected considerable differences between the variations in chl *a* and pH (Table S5), which again may indicate that primary production may not be the main driver of the observed variation in pH. However, it is noteworthy that the relationship between chl *a* and pH has primarily been documented in controlled settings (e.g., closed-chamber experiments; Cummings et al., 2019) or over short timescales (e.g., daily observations; Wootton et al., 2008; Ono et al., 2024). This relationship tends to be less evident in natural environments, which could be associated with the time lag or varying response times of biological productivity (chl *a*) to environmental changes (e.g., pH). Thus, despite our observation of an apparent decoupling between pH and chl *a* in the present

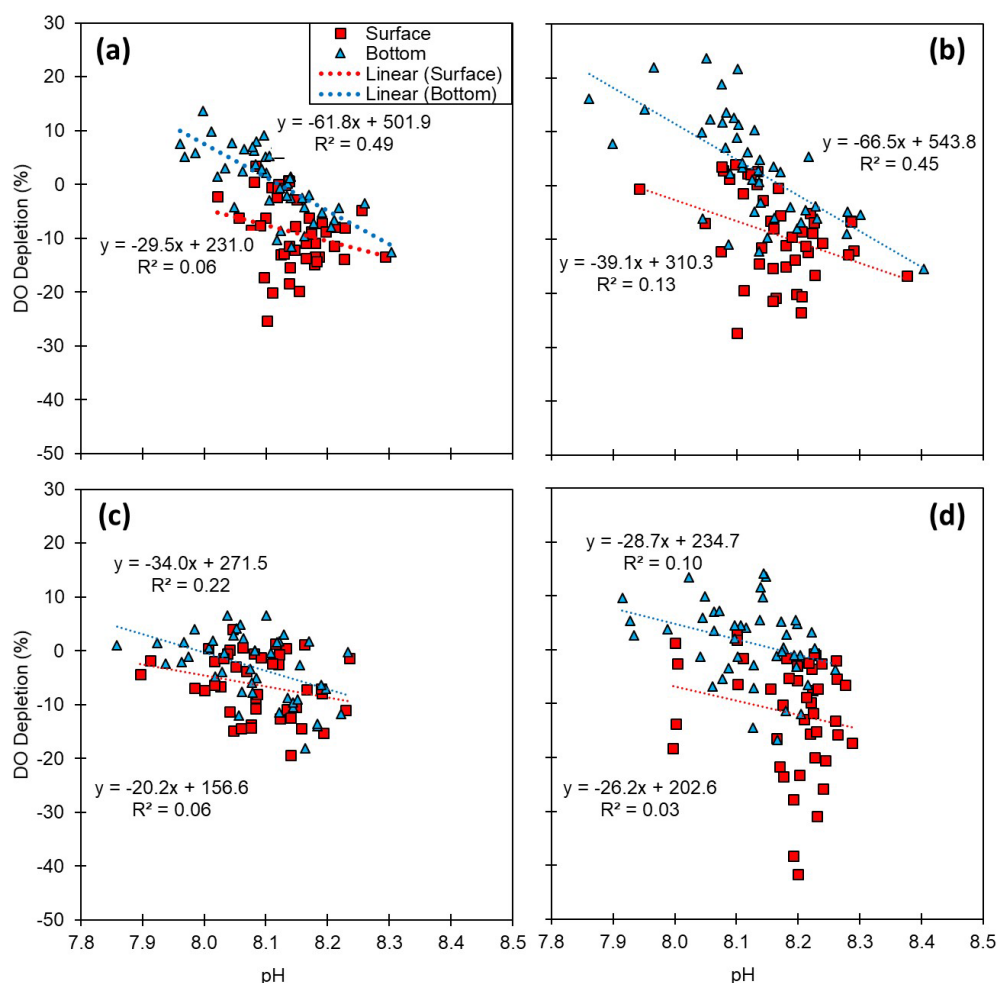


Figure 6. Relationships between pH and dissolved oxygen (DO) depletion (%): (a) the entire Korean coast and (b) the south, (c) the west, and (d) the east coasts. DO depletion was calculated by subtracting the measured concentration from the temperature–salinity-derived saturation (i.e., $\text{DO depletion (\%)} = (\text{DO}_{\text{saturation}} - \text{DO}_{\text{measured}}) / \text{DO}_{\text{saturation}} \times 100$). Thus, a positive value of DO depletion indicates oxygen consumption.

study, pH can still be significantly affected by primary production processes (Duarte et al., 2013; Ono et al., 2023).

Reduced DO concentrations are primarily driven by biological respiration within the water column and sediments, which is associated with the release of CO_2 . This liberated CO_2 can accumulate in the water column, particularly in the presence of the strong density gradients that are typically observed during summer. Once released, CO_2 reacts with water molecules, producing hydrogen ions and subsequently lowering the pH (Cai et al., 2011; Lowe et al., 2019). Thus, pH can exhibit a positive correlation with DO, a relationship that we observed in both surface and bottom waters (Table S5). In this regard, previous studies, such as that conducted by Cai et al. (2011), have reported pronounced declines in pH under conditions of low DO ($< 64 \mu\text{M}$) along the Louisiana shelf, wherein pH levels fell below 7.8. However, given that the monthly average DO concentrations along each of the

Korean coastlines never dropped below $128 \mu\text{M}$, the pH levels observed in the present study were not as low as those measured on the Louisiana shelf, but they were still notably lower, approximately 7.93, compared with normal conditions in Korean waters (8.20). To gain a better understanding of the DO consumption and pH changes, we calculated the apparent oxygen utilization (AOU), of which the positive values indicate a net DO consumption (or depletion). Among all the assessed regions and seasons, we failed to detect any significant consumption of DO in surface waters (Figs. 2–5), whereas contrastingly, in the bottom waters, pH showed a strong negative correlation with DO depletion (Fig. 6), indicating that an influx of CO_2 within the water column promoted a reduction in pH. For example, along the south coast, values of AOU reached up to $52.2 \mu\text{M}$ ($\sim 23.6\%$), which equates to $40.1 \mu\text{M}$ of CO_2 when converted using the Redfield ratio (106/138 for CO_2/O_2 ; Cai et al., 2011). This influx of

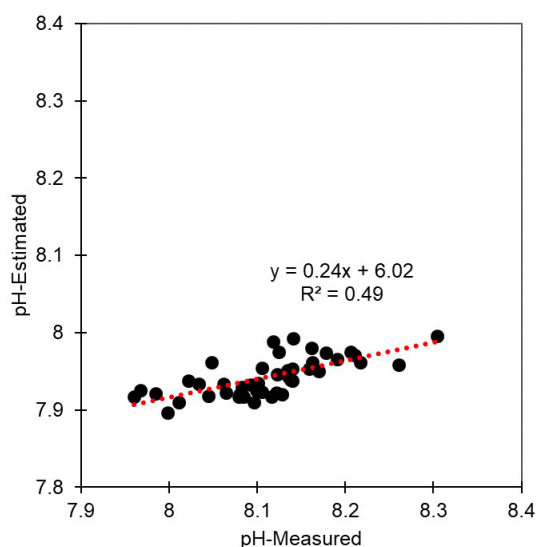


Figure 7. Distribution of measured and estimated pH. The pH was estimated under conditions of salinity 35, temperature 25 °C, phosphate $1 \mu\text{mol kg}^{-1}$, silicate $15 \mu\text{mol kg}^{-1}$, total alkalinity $2228 \mu\text{mol kg}^{-1}$, and total CO_2 concentration $1986 \mu\text{mol kg}^{-1}$. With the exception of CO_2 concentrations, other parameters were not altered for the estimation. CO_2 concentrations were altered based on dissolved oxygen (DO) consumption and the Redfield ratio (106/138 for CO_2/O_2).

CO_2 could theoretically lead to a reduction in pH of approximately 0.08 pH units. Moreover, the change in pH induced by the released CO_2 resulting from DO consumption was within the range of the observed pH variation (i.e., a 0.54 difference between 8.40 (maximum) and 7.86 (minimum)) (Fig. 7). Furthermore, the pH estimated from the AOU-derived CO_2 exhibited a strong correlation with the measured pH (Fig. 7). These findings thus provided evidence to indicate that the pH in Korean coastal waters is primarily controlled by oxygen conditions and associated CO_2 dynamics, which is similar to observations in the Louisiana shelf and East China Sea, wherein severe hypoxia occurs annually (Cai et al., 2011).

The findings of cluster analysis performed in this study revealed consistent hierarchical patterns among all coastal regions and within the three areas (Figs. 8 and S10). Specifically, pH and DO concentrations were consistently linked in the first cluster among the study sites, which is consistent with the findings of our linear regression analysis, thereby providing further support for the significant role of DO in influencing pH variability. However, the secondary links revealed certain variations. On the south coast, chl *a* concentration was identified as the second link for both surface and bottom waters, as well as for surface waters from the west coast. In contrast, salinity was found to be the second link for both the surface and bottom waters on the east coast and for bottom waters along the west coast. Among the three types of aquatic system assessed, salinity was the primary factor influencing pH in estuarine surface waters, whereas in bays and

river mouths, DO was identified as the dominant factor. We speculate that these regional differences in secondary linkages could be attributed to variations in biological productivity, in which areas with higher primary production, such as the southern and western coasts, appear to be characterized by relatively stronger pH modulation due to primary productivity. Conversely, in regions such as the east coast in which primary production is lower, salinity may play a more prominent role. Nevertheless, the influence of salinity on pH along the east coastline remains unclear, as this region was found to be characterized as having minimal variation in salinity. Despite these uncertainties, the results of cluster analysis consistently highlighted the sensitivity of pH to DO conditions, thereby tending to indicate that DO has a more substantial impact on pH than other environmental parameters.

3.4 pH variation in Korean coastal waters: insights and implications

The 11-year pH monitoring dataset obtained in this study provides an invaluable resource for examining the pH conditions in coastal waters with respect to rising atmospheric CO_2 levels. Notably, during this period, there has been a considerable increase in atmospheric CO_2 concentrations along the Korean coastline, which is possibly one of the highest rates globally (Fig. 9). Between the years 2010 and 2020, atmospheric CO_2 concentrations rose from 395 to 424 ppm, at a rate of 2.64 ppm yr^{-1} on Anmyeon Island, Korea, which is greater than the rate of 2.27 ppm yr^{-1} recorded at Mauna Loa Observatory, Hawaii (<https://gml.noaa.gov>, last access: 1 June 2024), which results in a pH decrease of approximately 0.002 yr^{-1} (Solomon et al., 2007). Nevertheless, despite this prominent increase, coastal pH variations may not be strongly influenced by atmospheric CO_2 alone, given the potential additional contribution of factors such as temperature, salinity, DO, primary production, hydrological processes, land use, nutrient inputs, pollution, and river water inputs. Conversely, pH levels in open oceans, which are less influenced by these factors, may be affected to a greater extent by increases in atmospheric CO_2 .

In this regard, the East Sea (also known as the Sea of Japan) (abbreviated here as EJS) offers a prime opportunity to compare changes in the pH of coastal and open-ocean environments. As a deep marginal sea with depths exceeding 3000 m, the EJS serves as a net sink for atmospheric CO_2 , absorbing approximately 1% of anthropogenic CO_2 emissions (Kim et al., 2022, 2023). Long-term pH monitoring in the central EJS from 1965 to 2015 has revealed a declining trend in pH at a rate of -0.0016 yr^{-1} (Chen et al., 2017). Similar trends have been observed in the North Atlantic (1995–2003) and at BATS (1983–2005), with pH reductions of $-0.0017 \pm 0.0005 \text{ yr}^{-1}$ and $-0.0017 \pm 0.0001 \text{ yr}^{-1}$, respectively (Bates, 2007). Consistently, a pH reduction of $-0.0019 \pm 0.0002 \text{ yr}^{-1}$ has been reported in the surface waters of the Pacific Ocean, based on in situ measurements from

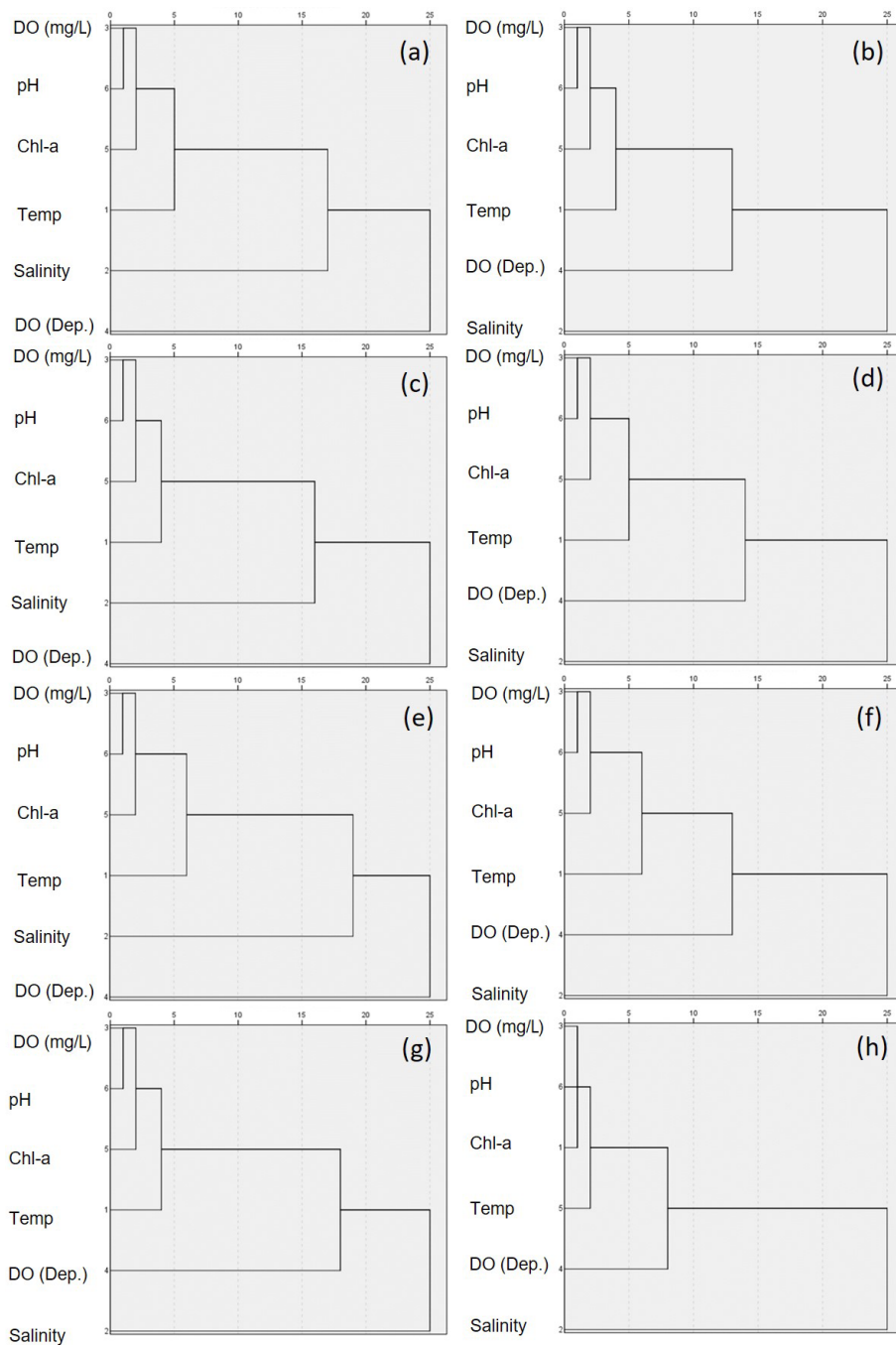


Figure 8. Hierarchical cluster analysis of parameters in coastal waters for (a, b) the entire, (c, d) the south, (e, f) the west, and (g, h) the east coasts of Korea. The left columns (a, c, e, g) represent surface waters, while the right (b, d, f, h) columns represent bottom waters.

HOT from 1988 to 2007 (Dore et al., 2009). These findings indicate that the reductions in the pH in the central EJS mirror the trends in other open-ocean regions and thus suggest that the EJS shows carbonate system characteristics typical of those of the open ocean. Consequently, it is reasonable to assume that the observed decline in pH can probably be

attributable to a gradual increase in atmospheric CO_2 over time.

Coastal regions bordering the central EJS are characterized by distinct pH variations relative to the open ocean and other coastal areas of the EJS. Whereas we found that the eastern coast of Korea, west of the EJS, showed no significant reduction in pH over the course of the study period,

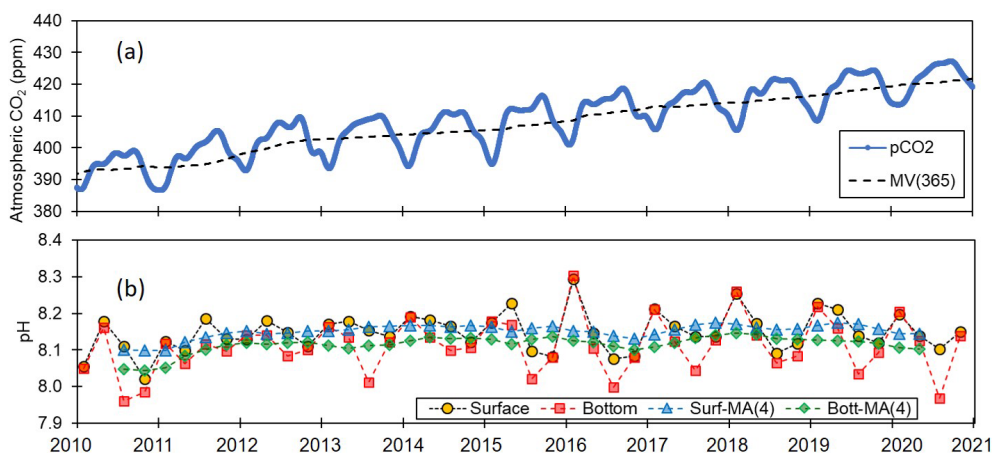


Figure 9. Trends of atmospheric CO₂ and seawater pH. Variations in (a) atmospheric CO₂ (ppm) at Anmyeon Island and (b) seawater pH along the entire Korean coast.

the Japanese coast, southeast of the EJS, has been found to show a pronounced pH decline, with rates surpassing those of the central EJS. Studies by Ishizu et al. (2019) and Ishida et al. (2021) have reported acidification rates of -0.0025 and -0.003 yr^{-1} , respectively, based on pH measurements from 1978 to 2009 at Niigata and over a 30-year period at Kashiwazaki Bay. Although comprehensive datasets that could be used to identify the precise causes of these spatial variations are lacking, local biogeochemical factors, such as nutrient levels, biological production, oxygen conditions, and contaminant inputs, are assumed to play significant roles. For example, compared with the Japanese coast, primary production is notably higher along the Korean coast (Joo et al., 2015). In addition, higher amounts of contaminant inputs including heavy metals reducing primary production due to biotoxicity or eutrophication causing bottom-water hypoxia in the vicinity of Niigata (a megacity on the Japanese coast) may have contributed to these observed differences. Nonetheless, the rate of pH decline in Japanese coastal waters has been more rapid than that recorded in the central EJS (-0.0016 yr^{-1}) and Korean coastal waters. However, the factors contributing to this accelerated acidification in Japanese coastal waters have yet to be sufficiently determined (Ishida et al., 2021). Overall, the observed variations in pH indicate strong spatial heterogeneity governed by complex local biogeochemical conditions in coastal waters, which contrasts with the more uniform pH trends observed in open-ocean systems.

Global ocean warming is anticipated to exacerbate the ongoing decline in seawater pH, as a consequence of elevated degassing. Along the Korean Peninsula, seawater temperatures have shown an increasing trend in both surface and bottom waters over the past few decades. This warming could accelerate the decline in pH along the Korean coast, potentially outweighing the influence of local heterogeneity (Breitburg et al., 2018). This decline in the pH of Korean

coastal waters is particularly concerning given its potentially detrimental impacts on diverse aquacultural facilities, including those culturing shellfish, fish, and seaweed, the stocks of which generally have species-specific tolerance ranges (Kroeker et al., 2013; Lowe et al., 2019). Thus, oceanic acidification can have serious economic implications for both local and national economies.

4 Conclusion

The dataset compiled in this study enabled us to examine pH variability in shallow coastal waters along the Korean coast over a 11-year period. Despite a general trend of pH decline recorded elsewhere in both open and coastal waters due to rising atmospheric CO₂, our data failed to provide any clear evidence of a pH decline in Korean coastal waters, thereby indicating that increasing surface water CO₂ levels are not the primary drivers of pH variations observed in these waters. Instead, we provide evidence to indicate that pH variations are closely linked with DO levels in almost all coastal regions (i.e., south, west, and east) and within the three assessed geographical areas (estuary, bay, and river mouth). This putative relationship between pH and oxygen levels implies that global warming, which reduces DO by degassing and respiration in response to a strong thermal gradient, could lead to a decline in pH in Korean coastal waters. Such a reduction in pH could have significant implications given that Korean coastal waters support numerous fish and seaweed farms, raising stock that are particularly sensitive to the chemical properties of water. Nonetheless, our findings provide a baseline for further studies examining variations in the pH of the shallow coastal waters of Korea. Overall, future studies and monitoring efforts are essential to enable reasonable predictions of the impacts of ocean acidification on marine ecosystems and the bioeconomy of Korea's coastal waters.

Data availability. The datasets analyzed in this study can be found at the National Marine Environmental Measuring Network program website. The data are available at <http://www.meis.go.kr> (KOEM, 2024).

Supplement. The supplement related to this article is available online at: <https://doi.org/10.5194/bg-22-675-2025-supplement>.

Author contributions. YWL, MOP, and SGK contributed to the data acquisition and sample collection. DJJ processed the data. YWL, MOP, SGK, THK, YHO, SHL, and DJJ interpreted the biogeochemical data. DJJ wrote the first draft of the manuscript. All authors contributed equally to the review and editing of this article and have approved the submitted version.

Competing interests. The contact author has declared that none of the authors has any competing interests.

Disclaimer. Publisher's note: Copernicus Publications remains neutral with regard to jurisdictional claims made in the text, published maps, institutional affiliations, or any other geographical representation in this paper. While Copernicus Publications makes every effort to include appropriate place names, the final responsibility lies with the authors.

Acknowledgements. The authors are grateful to the crew members of the R/V of KOEM for their assistance. Constructive comments from the anonymous reviewers have enabled us to substantially improve the manuscript.

Financial support. This research was supported by the Global-Learning and Academic Research Institute for master's and PhD students and a postdoctoral program (G-LAMP) of the National Research Foundation of Korea (NRF), funded by the Ministry of Education (grant no. RS-2023-00301938) and by the Korean Government (grant no. 2022R1A2C109112313).

Review statement. This paper was edited by Jack Middelburg and reviewed by two anonymous referees.

References

- Bates, N. R., Astor, Y. M., Church, M. J., Currie, K., Dore, J. E., González-Dávila, M., Lorenzoni, L., Muller-Karger, F., Olafsson, J., and Santana-Casiano, J. M.: A time-series view of changing surface ocean chemistry due to ocean uptake of anthropogenic CO₂ and ocean acidification, *Oceanography*, 27, 126–141, <https://doi.org/10.5670/oceanog.2014.16>, 2014.
- Bates, N. R.: Interannual variability of the oceanic CO₂ sink in the subtropical gyre of the North Atlantic Ocean over the last 2 decades, *J. Geophys. Res.-Ocean.*, 112, C09013, <https://doi.org/10.1029/2006JC003759>, 2007.
- Borges, A. V. and Gypens, N.: Carbonate chemistry in the coastal zone responds more strongly to eutrophication than ocean acidification. *Limnol. Oceanogr.*, 55, 346–353, <https://doi.org/10.4319/lo.2010.55.1.0346>, 2010.
- Breitbart, D., Levin, L. A., Oschlies, A., Grégoire, M., Chavez, F. P., Conley, D. J., Garçon, V., Gilbert, D., Gutiérrez, D., and Isensee, K.: Declining oxygen in the global ocean and coastal waters, *Science*, 359, eaam7240, <https://doi.org/10.1126/science.aam7240>, 2018.
- Cai, W. J.: Estuarine and coastal ocean carbon paradox: CO₂ sinks or sites of terrestrial carbon incineration?, *Annu. Rev. Mar. Sci.*, 3, 123–145, <https://doi.org/10.1146/annurev-marine-120709-142723>, 2011.
- Cai, W.-J., Hu, X., Huang, W.-J., Murrell, M. C., Lehrter, J. C., Lohrenz, S. E., Chou, W.-C., Zhai, W., Hollibaugh, J. T., and Wang, Y.: Acidification of subsurface coastal waters enhanced by eutrophication, *Nat. Geosci.*, 4, 766–770, <https://doi.org/10.1038/NGEO1297>, 2011.
- Caldeira, K. and Wickett, M. E.: Anthropogenic carbon and ocean pH, *Nature*, 425, 365, <https://doi.org/10.1038/425365a>, 2003.
- Canadell, J. G., Monteiro, P. M. S., Costa, M. H., Cotrim da Cunha, L., Cox, P. M., Eliseev, A. V., Henson, S., Ishii, M., Jaccard, S., Koven, C., Lohila, A., Patra, P. K., Piao, S., Rogelj, J., Syampungani, S., Zaehle, and Zickfeld, K.: Global Carbon and other Biogeochemical Cycles and Feedbacks, in: *Climate Change 2021: The Physical Science Basis, Contribution of Working Group I to the Sixth Assessment Report of the Intergovernmental Panel on Climate Change*, edited by: Masson-Delmotte, V., Zhai, P., Pirani, A., Connors, S. L., Péan, C., Berger, S., Caud, N., Chen, Y., Goldfarb, L., Gomis, M. I., Huang, M., Leitzell, K., Lonnoy, E., Matthews, J. B. R., Maycock, T. K., Waterfield, T., Yelekçi, O., Yu, R., and Zhou, B., Cambridge University Press, Cambridge, United Kingdom and New York, NY, USA, 673–816, <https://doi.org/10.1017/9781009157896.007>, 2021.
- Carstensen, J. and Duarte, C. M.: Drivers of pH variability in coastal ecosystems, *Environ. Sci. Technol.*, 53, 4020–4029, <https://doi.org/10.1021/acs.est.8b03655>, 2019.
- Chang, K.-I., Park, K., Suk, M.-S., and Kim, C.-K.: The south sea circulation of Korea: Two-dimensional barotropic model, *The Sea: Journal of The Korean Society of Oceanography*, 5, 257–266, 2000.
- Chen, C. T. A., Lui, H. K., Hsieh, C. H., Yanagi, T., Kosugi, N., Ishii, M., and Gong, G. C.: Deep oceans may acidify faster than anticipated due to global warming, *Nat. Clim. Change*, 7, 890–894, <https://doi.org/10.1038/s41558-017-0003-y>, 2017.
- Chen, J., Glibert, P. M., Cai, W.-J., and Huang, D.: Eutrophication, algal bloom, hypoxia and ocean acidification in large river estuaries, volume II, *Front. Mar. Sci.*, 10, 1225903, <https://doi.org/10.3389/fmars.2023.1225903>, 2023.
- Crossland, C. J., Baird, D., Ducrottoy, J.-P., Lindeboom, H., Bud-demeier, R. W., Dennison, W. C., Maxwell, B. A., Smith, S. V., and Swaney, D. P.: The coastal zone – a domain of global interactions, in: *Coastal fluxes in the Anthropocene: the land-ocean interactions in the coastal zone project of the International Geosphere-Biosphere Programme*, Springer, 1–37, <https://doi.org/10.1007/3-540-27851-6>, 2005.

- Cummings, V. J., Barr, N. G., Marriott, P. M., Budd, R. G., Safi, K. A., and Lohrer, A. M.: In situ response of Antarctic under-ice primary producers to experimentally altered pH, *Sci. Rep.*, 9, 6069, <https://doi.org/10.1038/s41598-019-42329-0>, 2019.
- Doney, S. C., Fabry, V. J., Feely, R. A., and Kleyapas, J. A.: Ocean acidification: The other CO₂ problem, *Ann. Rev. Mar. Sci.*, 1, 169–192, <https://doi.org/10.1146/annurev.marine.010908.163834>, 2009.
- Doney, S. C., Mahowald, N., Lima, I., Feely, R. A., Mackenzie, F. T., Lamarque, J.-F., and Rasch, P. J.: Impact of anthropogenic atmospheric nitrogen and sulfur deposition on ocean acidification and the inorganic carbon system, *P. Natl. Acad. Sci. USA*, 104, 14580–14585, <https://doi.org/10.1073/pnas.0702218104>, 2007.
- Dore, J. E., Lukas, R., Sadler, D. W., Church, M. J., and Karl, D. M.: Physical and biogeochemical modulation of ocean acidification in the central North Pacific, *P. Natl. Acad. Sci. USA*, 106, 12235–12240, <https://doi.org/10.1073/pnas.0906044106>, 2009.
- Duarte, C. M., Hendriks, I. E., Moore, T. S., Olsen, Y. S., Steckbauer, A., Ramajo, L., Carstensen, J., Trotter, J. A., and McCulloch, M.: Is Ocean Acidification an Open-Ocean Syndrome? Understanding Anthropogenic Impacts on Seawater pH, *Estuar. Coast.*, 36, 221–236, <https://doi.org/10.1007/s12237-013-9594-3>, 2013.
- Feely, R. A., Alin, S. R., Carter, B., Bednaršek, N., Hales, B., Chan, F., Hill, T. M., Gaylord, B., Sanford, E., and Byrne, R. H.: Chemical and biological impacts of ocean acidification along the west coast of North America, *Estuar. Coast. Shelf S.*, 183, 260–270, <https://doi.org/10.1016/j.ecss.2016.08.043>, 2016.
- Feely, R. A., Sabine, C. L., Hernandez-Ayon, J. M., Ianson, D., and Hales, B.: Evidence for upwelling of corrosive “acidified” water onto the continental shelf, *Science*, 320, 1490–1492, <https://doi.org/10.1126/science.1155676>, 2008.
- Feely, R. A., Sabine, C. L., Lee, K., Berelson, W., Kleypas, J., Fabry, V. J., and Millero, F. J.: Impact of anthropogenic CO₂ on the CaCO₃ system in the oceans, *Science*, 305, 362–366, <https://doi.org/10.1126/science.1097329>, 2004.
- Flecha, S., Pérez, F. F., García-Lafuente, J., Sammartino, S., Ríos, A. F., and Huertas, I. E.: Trends of pH decrease in the Mediterranean Sea through high frequency observational data: Indication of ocean acidification in the basin, *Sci. Rep.-UK*, 5, 16770, <https://doi.org/10.1038/srep16770>, 2015.
- Flecha, S., Pérez, F. F., Murata, A., Makaoui, A., and Huertas, I. E.: Decadal acidification in Atlantic and Mediterranean water masses exchanging at the Strait of Gibraltar, *Sci. Rep.-UK*, 9, 15533, <https://doi.org/10.1038/s41598-019-52084-x>, 2019.
- Flecha, S., Pérez, F. F., Navarro, G., Ruiz, J., Olivé, I., Rodríguez-Gálvez, S., Costas, E., and Huertas, I. E.: Anthropogenic carbon inventory in the Gulf of Cádiz, *J. Marine Syst.*, 92, 67–75, <https://doi.org/10.1016/j.jmarsys.2011.10.010>, 2012.
- Friedlingstein, P., O’Sullivan, M., Jones, M. W., Andrew, R. M., Gregor, L., Hauck, J., Le Quéré, C., Luijckx, I. T., Olsen, A., Peters, G. P., Peters, W., Pongratz, J., Schwingshackl, C., Sitch, S., Canadell, J. G., Ciais, P., Jackson, R. B., Alin, S. R., Alkama, R., Arneeth, A., Arora, V. K., Bates, N. R., Becker, M., Bellouin, N., Bittig, H. C., Bopp, L., Chevallier, F., Chini, L. P., Cronin, M., Evans, W., Falk, S., Feely, R. A., Gasser, T., Gehlen, M., Gkritzalis, T., Gloege, L., Grassi, G., Gruber, N., Gürses, Ö., Harris, I., Hefner, M., Houghton, R. A., Hurtt, G. C., Iida, Y., Ilyina, T., Jain, A. K., Jersild, A., Kadono, K., Kato, E., Kennedy, D., Klein Goldewijk, K., Knauer, J., Korsbakken, J. I., Landschützer, P., Lefèvre, N., Lindsay, K., Liu, J., Liu, Z., Marland, G., Mayot, N., McGrath, M. J., Metzl, N., Monacci, N. M., Munro, D. R., Nakaoka, S.-I., Niwa, Y., O’Brien, K., Ono, T., Palmer, P. I., Pan, N., Pierrot, D., Pocock, K., Poulter, B., Resplandy, L., Robertson, E., Rödenbeck, C., Rodriguez, C., Rosan, T. M., Schwinger, J., Séférian, R., Shutler, J. D., Skjelvan, I., Steinhoff, T., Sun, Q., Sutton, A. J., Sweeney, C., Takao, S., Tanhua, T., Tans, P. P., Tian, X., Tian, H., Tilbrook, B., Tsujino, H., Tubiello, F., van der Werf, G. R., Walker, A. P., Wanninkhof, R., Whitehead, C., Willstrand Wranne, A., Wright, R., Yuan, W., Yue, C., Yue, X., Zaehle, S., Zeng, J., and Zheng, B.: Global Carbon Budget 2022, *Earth Syst. Sci. Data*, 14, 4811–4900, <https://doi.org/10.5194/essd-14-4811-2022>, 2022.
- Hassoun, A. E. R., Gemayel, E., Krasakopoulou, E., Goyet, C., Abboud-Abi Saab, M., Guglielmi, V., Touratier, F., and Falco, C.: Acidification of the Mediterranean Sea from anthropogenic carbon penetration, *Deep-Sea Res. Pt. I*, 102, 1–15, <https://doi.org/10.1016/j.dsr.2015.04.005>, 2015.
- Hendriks, I. E., Duarte, C. M., Olsen, Y. S., Steckbauer, A., Ramajo, L., Moore, T. S., Trotter, J. A., and McCulloch, M.: Biological mechanisms supporting adaptation to ocean acidification in coastal ecosystems, *Estuar. Coast. Shelf S.*, 152, A1–A8, <https://doi.org/10.1016/j.ecss.2014.07.019>, 2015.
- Hinga, K. R.: Effects of pH on coastal marine phytoplankton, *Mar. Ecol.-Prog. Ser.*, 238, 281–300, <https://doi.org/10.3354/meps238281>, 2002.
- Hofmann, G. E., Smith, J. E., Johnson, K. S., Send, U., Levin, L. A., Micheli, F., Paytan, A., Price, N. N., Peterson, B., Takeshita, Y., Matson, P. G., de Crook, E., Kroeker, K. J., Gambi, M. C., Rivest, E. B., Frieder, C. A., Yu, P. C., and Martz, T. R.: High-frequency dynamics of ocean pH: A multi-ecosystem comparison, *PLoS One*, 6, e28983, <https://doi.org/10.1371/journal.pone.0028983>, 2011.
- Huang, Y. and An, S.: Weak Hypoxia Enhanced Denitrification in a Dissimilatory Nitrate Reduction to Ammonium (DNRA)-Dominated Shallow and Eutrophic Coastal Waterbody, Jinhai Bay, South Korea, *Front Mar. Sci.*, 9, 897474, <https://doi.org/10.3389/fmars.2022.897474>, 2022.
- Hwang, J. H., Van, S. P., Choi, B. J., Chang, Y. S., and Kim, Y. H.: The physical processes in the Yellow Sea, *Ocean Coast. Manag.*, 102, 449–457, <https://doi.org/10.1016/j.ocecoaman.2014.03.026>, 2014.
- Hwang, Y. and Lee, T.: The Buffer Capacity of the Carbonate System in the Southern Korean Surface Waters in Summer, *The Sea, J. Korean Soc. Oceanogr.*, 27, 17–32, <https://doi.org/10.7850/jkso.2022.27.1.017>, 2022.
- Ishida, H., Isono, R. S., Kita, J., and Watanabe, Y. W.: Long-term ocean acidification trends in coastal waters around Japan, *Sci. Rep.-UK*, 11, 5052, <https://doi.org/10.1038/s41598-021-84657-0>, 2021.
- Ishizu, M., Miyazawa, Y., Tsunoda, T., and Ono, T.: Long-term trends in pH in Japanese coastal seawater, *Biogeosciences*, 16, 4747–4763, <https://doi.org/10.5194/bg-16-4747-2019>, 2019.
- Jang, P. G., Shin, H. H., Baek, S. H., Jang, M. C., Lee, T. S., and Shin, K.: Nutrient distribution and effects on phytoplankton assemblages in the western Kore-

- a/Tsushima Strait, *New Zeal. J. Mar. Freshw.*, 47, 21–37, <https://doi.org/10.1080/00288330.2012.718284>, 2013.
- Joo, H., Son, S., Park, J.-W., Kang, J. J., Jeong, J.-Y., Lee, C. Il, Kang, C.-K., and Lee, S. H.: Long-term pattern of primary productivity in the East/Japan Sea based on ocean color data derived from MODIS-aqua, *Remote Sens.-Basel*, 8, 25, <https://doi.org/10.3390/rs8010025>, 2015.
- Kim, M., Hwang, J., Kim, G., Na, T., Kim, T. H., and Hyun, J. H.: Carbon cycling in the East Sea (Japan Sea): A review, *Front. Mar. Sci.*, 9, 938935, <https://doi.org/10.3389/fmars.2022.938935>, 2022.
- Kim, S., Lee, K., Lee, T., Kim, J., and Han, I.: Climate-Driven Fluctuations in Anthropogenic CO₂ Uptake by the East Sea in the North Pacific Ocean, *Geophys. Res. Lett.*, 50, e2023GL105819, <https://doi.org/10.1029/2023GL105819>, 2023.
- Kleypas, J. A. and Yates, K. K.: Coral reefs and ocean acidification, *Oceanography*, 22, 108–117, <https://doi.org/10.5670/oceanog.2009.101>, 2009.
- KOEM: Marine environmental monitoring and survey, Ministry of Oceans and Fisheries [data set], <http://www.meis.go.kr>, last access: 1 April 2024.
- Kroeker, K. J., Kordas, R. L., Crim, R., Hendriks, I. E., Ramajo, L., Singh, G. S., Duarte, C. M., and Gattuso, J. P.: Impacts of ocean acidification on marine organisms: Quantifying sensitivities and interaction with warming, *Glob. Change Biol.*, 19, 1884–1896, <https://doi.org/10.1111/gcb.12179>, 2013.
- Lee, J., Park, K. T., Lim, J. H., Yoon, J. E., and Kim, I. N.: Hypoxia in Korean coastal waters: A case study of the natural Jinhae Bay and artificial Shihwa Bay, *Front. Mar. Sci.*, 5, 70, <https://doi.org/10.3389/fmars.2018.00070>, 2018.
- Lee, Y. W., Park, M. O., Kim, S. G., Kim, S. S., Khang, B., Choi, J., Lee, D., and Lee, S. H.: Major controlling factors affecting spatiotemporal variation in the dissolved oxygen concentration in the eutrophic Masan Bay of Korea, *Reg. Stud. Mar. Sci.*, 46, 101908, <https://doi.org/10.1016/j.rsma.2021.101908>, 2021.
- Lie, H. and Cho, C.: On the origin of the Tsushima Warm Current, *J. Geophys. Res.-Oceans*, 99, 25081–25091, <https://doi.org/10.1029/94JC02425>, 1994.
- Lowe, A. T., Bos, J., and Ruesink, J.: Ecosystem metabolism drives pH variability and modulates long-term ocean acidification in the Northeast Pacific coastal ocean, *Sci. Rep.-UK*, 9, 963, <https://doi.org/10.1038/s41598-018-37764-4>, 2019.
- Nilsson, G. E., Dixon, D. L., Domenici, P., McCormick, M. I., Sørensen, C., Watson, S. A., and Munday, P. L.: Near-future carbon dioxide levels alter fish behaviour by interfering with neurotransmitter function, *Nat. Clim. Change*, 2, 201–204, <https://doi.org/10.1038/nclimate1352>, 2012.
- Ono, T., Muraoka, D., Hayashi, M., Yorifuji, M., Dazai, A., Omoto, S., Tanaka, T., Okamura, T., Onitsuka, G., Sudo, K., Fujii, M., Hamanoue, R., and Wakita, M.: Short-term variation in pH in seawaters around coastal areas of Japan: characteristics and forcings, *Biogeosciences*, 21, 177–199, <https://doi.org/10.5194/bg-21-177-2024>, 2024.
- Orr, J. C.: Antarctic ice-sheet loss driven by basal melting of ice shelves, *Nature*, 437, 681–686, <https://doi.org/10.1038/nature10968>, 2005.
- Palmiéri, J., Orr, J. C., Dutay, J.-C., Béranger, K., Schneider, A., Beuvier, J., and Somot, S.: Simulated anthropogenic CO₂ storage and acidification of the Mediterranean Sea, *Biogeosciences*, 12, 781–802, <https://doi.org/10.5194/bg-12-781-2015>, 2015.
- Pelejero, C., Calvo, E., McCulloch, M. T., Marshall, J. F., Gagan, M. K., Lough, J. M., and Opdyke, B. N.: Preindustrial to modern interdecadal variability in coral reef pH, *Science*, 309, 2204–2207, <https://doi.org/10.1126/science.1113692>, 2005.
- Provoost, P., van Heuven, S., Soetaert, K., Laane, R. W. P. M., and Middelburg, J. J.: Seasonal and long-term changes in pH in the Dutch coastal zone, *Biogeosciences*, 7, 3869–3878, <https://doi.org/10.5194/bg-7-3869-2010>, 2010.
- Raven, J. A., Gobler, C. J., and Hansen, P. J.: Dynamic CO₂ and pH levels in coastal, estuarine, and inland waters: Theoretical and observed effects on harmful algal blooms, *Harmful Algae*, 91, 101594, <https://doi.org/10.1016/j.hal.2019.03.012>, 2020.
- Saraswat, R., Kouthanker, M., Kurtarkar, S. R., Nigam, R., Naqvi, S. W. A., and Linshy, V. N.: Effect of salinity induced pH/alkalinity changes on benthic foraminifera: A laboratory culture experiment, *Estuar. Coast. Shelf S.*, 153, 96–107, <https://doi.org/10.1016/j.ecss.2014.12.005>, 2015.
- Smith, S. V. and Buddemeier, R. W.: Global change and coral reef ecosystems, *Annu. Rev. Ecol. Syst.*, 23, 89–118, 1992.
- Soetaert, K., Hofmann, A. F., Middelburg, J. J., Meysman, F. J. R., and Greenwood, J.: The effect of biogeochemical processes on pH, *Mar. Chem.*, 105, 30–51, <https://doi.org/10.1016/j.marchem.2006.12.012>, 2007.
- Takahashi, T., Sutherland, S. C., Wanninkhof, R., Sweeney, C., Feely, R. A., Chipman, D. W., Hales, B., Friederich, G., Chavez, F., and Sabine, C.: Climatological mean and decadal change in surface ocean pCO₂, and net sea–air CO₂ flux over the global oceans, *Deep-Sea Res. Pt. II*, 56, 554–577, <https://doi.org/10.1016/j.dsr2.2008.12.009>, 2009.
- Watanabe, Y. W., Li, B. F., and Wakita, M.: Long-term trends of direct and indirect anthropogenic effects on changes in ocean pH, *Geophys. Res. Lett.*, 45, 9106–9113, <https://doi.org/10.1029/2018GL078084>, 2018.
- Williams, J. R., Dellapenna, T. M., and Lee, G.: Shifts in depositional environments as a natural response to anthropogenic alterations: Nakdong Estuary, South Korea, *Mar. Geol.*, 343, 47–61, <https://doi.org/10.1016/j.margeo.2013.05.010>, 2013.
- Williams, J., Dellapenna, T., Lee, G., and Louchouart, P.: Sedimentary impacts of anthropogenic alterations on the Yeongsan Estuary, South Korea, *Mar. Geol.*, 357, 256–271, <https://doi.org/10.1016/j.margeo.2014.08.004>, 2014.
- Williams, J., Lee, G., Shin, H. J., and Dellapenna, T.: Mechanism for sediment convergence in the anthropogenically altered microtidal Nakdong Estuary, South Korea, *Mar. Geol.*, 369, 79–90, <https://doi.org/10.1016/j.margeo.2015.08.004>, 2015.
- Wootton, J. T., Pfister, C. A., and Forester, J. D.: Dynamic patterns and ecological impacts of declining ocean pH in a high-resolution multi-year dataset, *Biol. Sci.*, 105, 18848–18853, <https://doi.org/10.1073/pnas.0810079105>, 2008.