



Supplement of

Including the invisible: deep depth-integrated chlorophyll estimates from remote sensing may assist in identifying biologically important areas in oligotrophic coastal margins

Renée P. Schoeman et al.

Correspondence to: Renée P. Schoeman (renee.koper@postgrad.curtin.edu.au)

The copyright of individual parts of the supplement might differ from the article licence.

Figure S1.

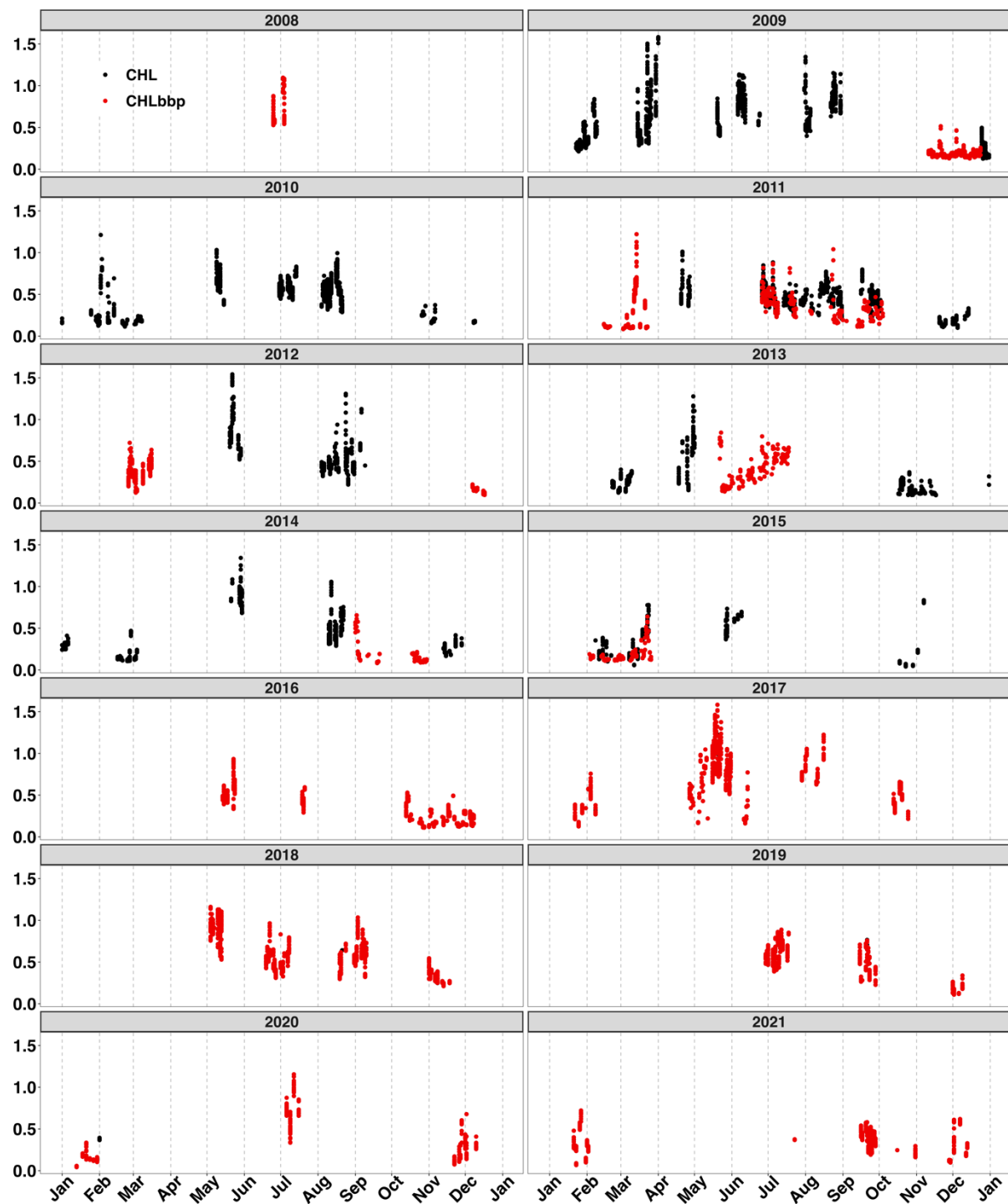


Figure S1: Temporal coverage of ocean glider data for each year included in the data analysis. Black dots indicate data for which only chlorophyll data were available. Red dots indicate data for which both chlorophyll and particle backscatter coefficient data were available.

Figure S2.

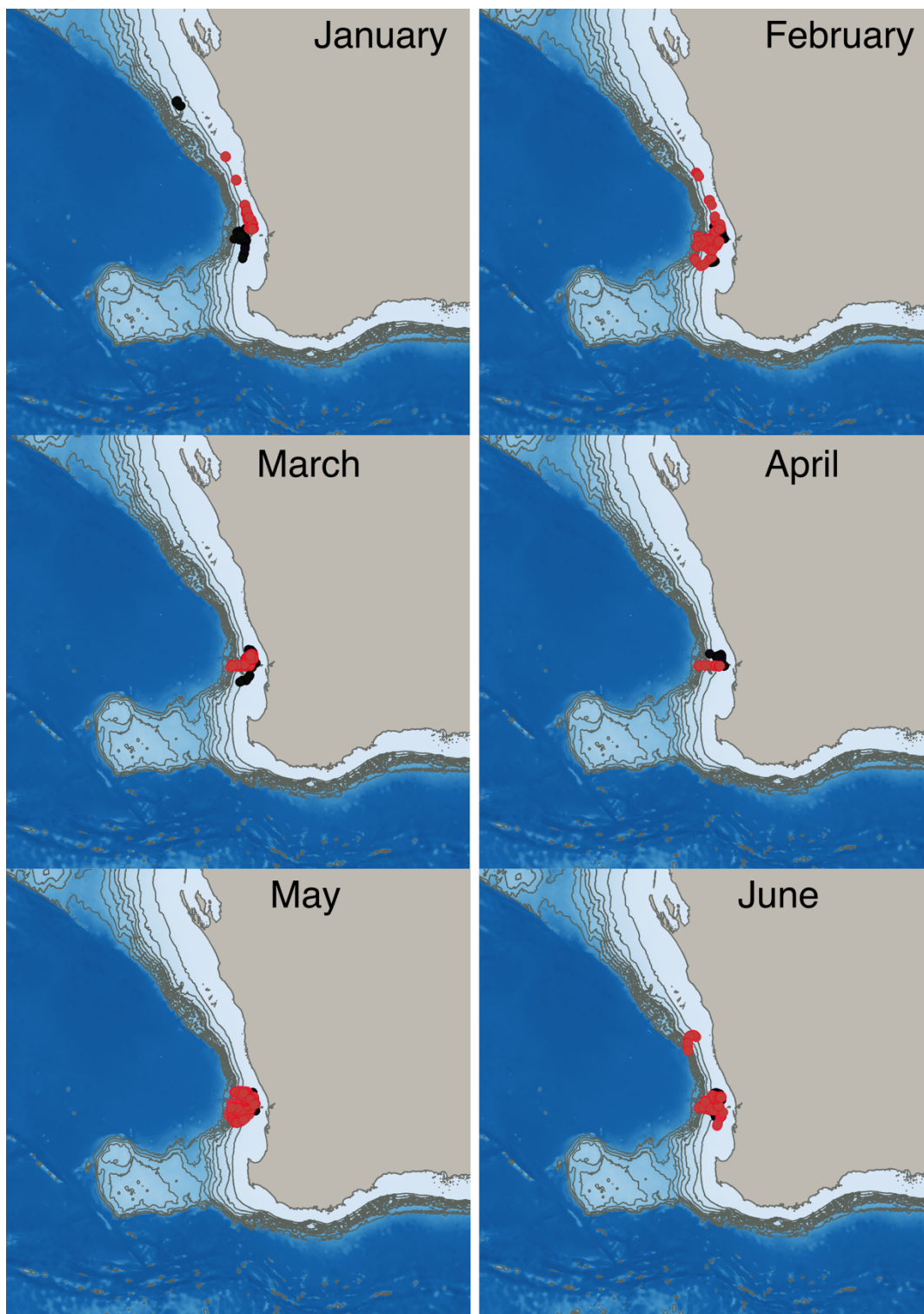


Figure S2: Spatial coverage of ocean glider data for each month of the year. Black dots indicate data for which only chlorophyll data were available. Red dots indicate data for which both chlorophyll and particle backscatter coefficient data were available.

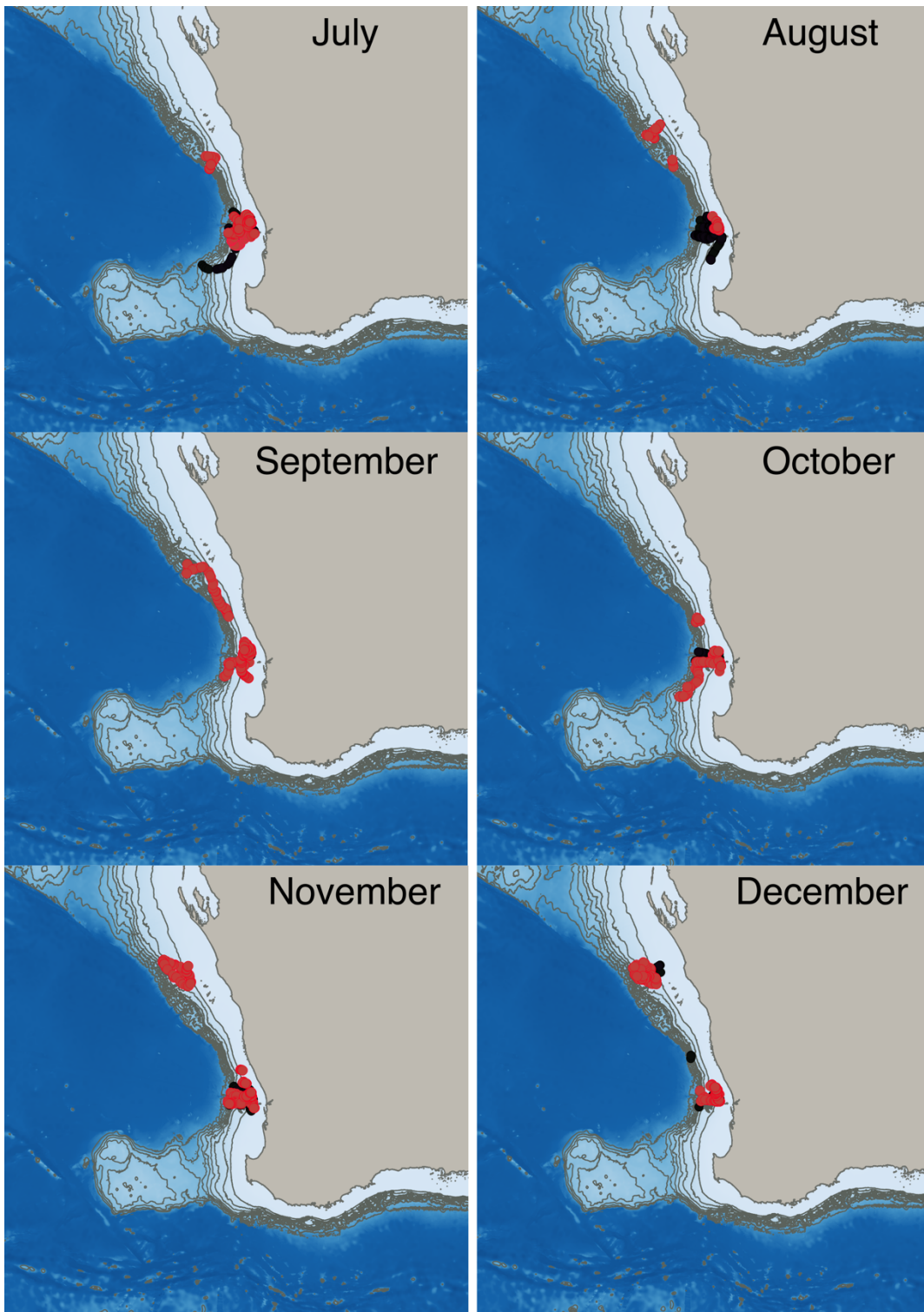


Figure S2 continued: Spatial coverage of ocean glider data for each month of the year. Black dots indicate data for which only chlorophyll data were available. Red dots indicate data for which both chlorophyll and particle backscatter coefficient data were available.

Figure S3.

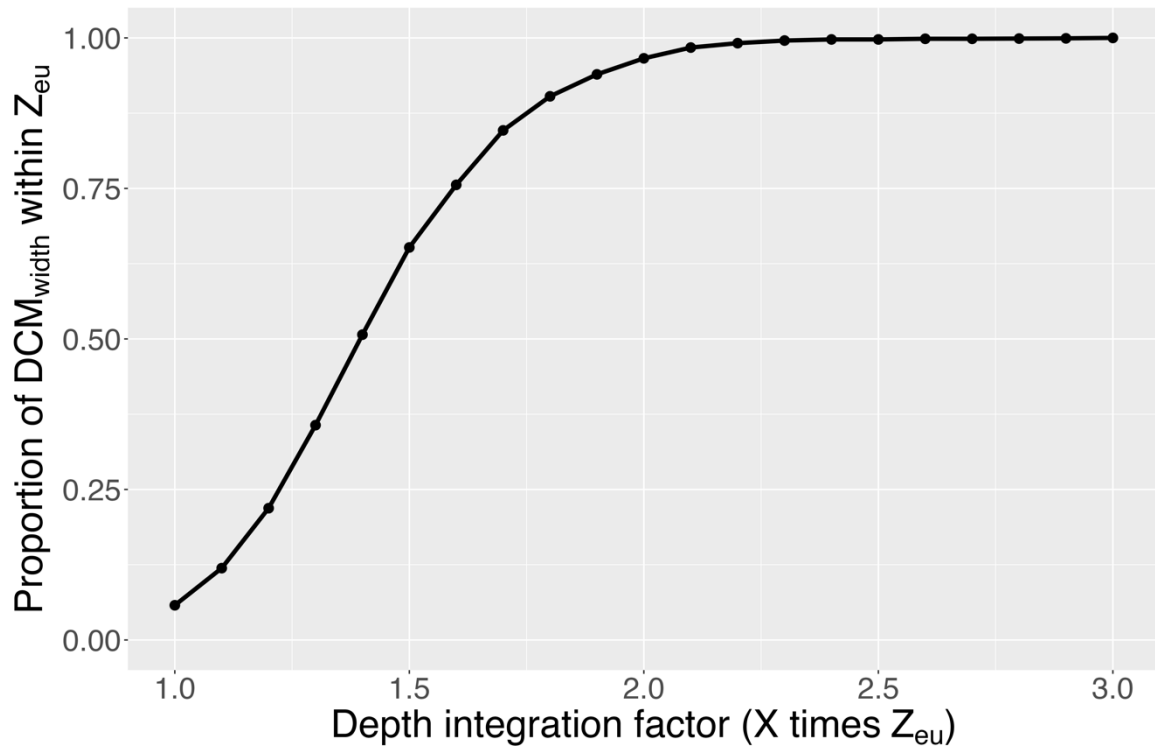


Figure S3: DCM_{width} inclusion curve showing the proportion of full DCM half-peak widths included in water-column-integrated chlorophyll values when integrating over different extensions of the euphotic zone depth (i.e., from 1 to 3 times the euphotic zone depth at 0.1 step increments).

Figure S4.

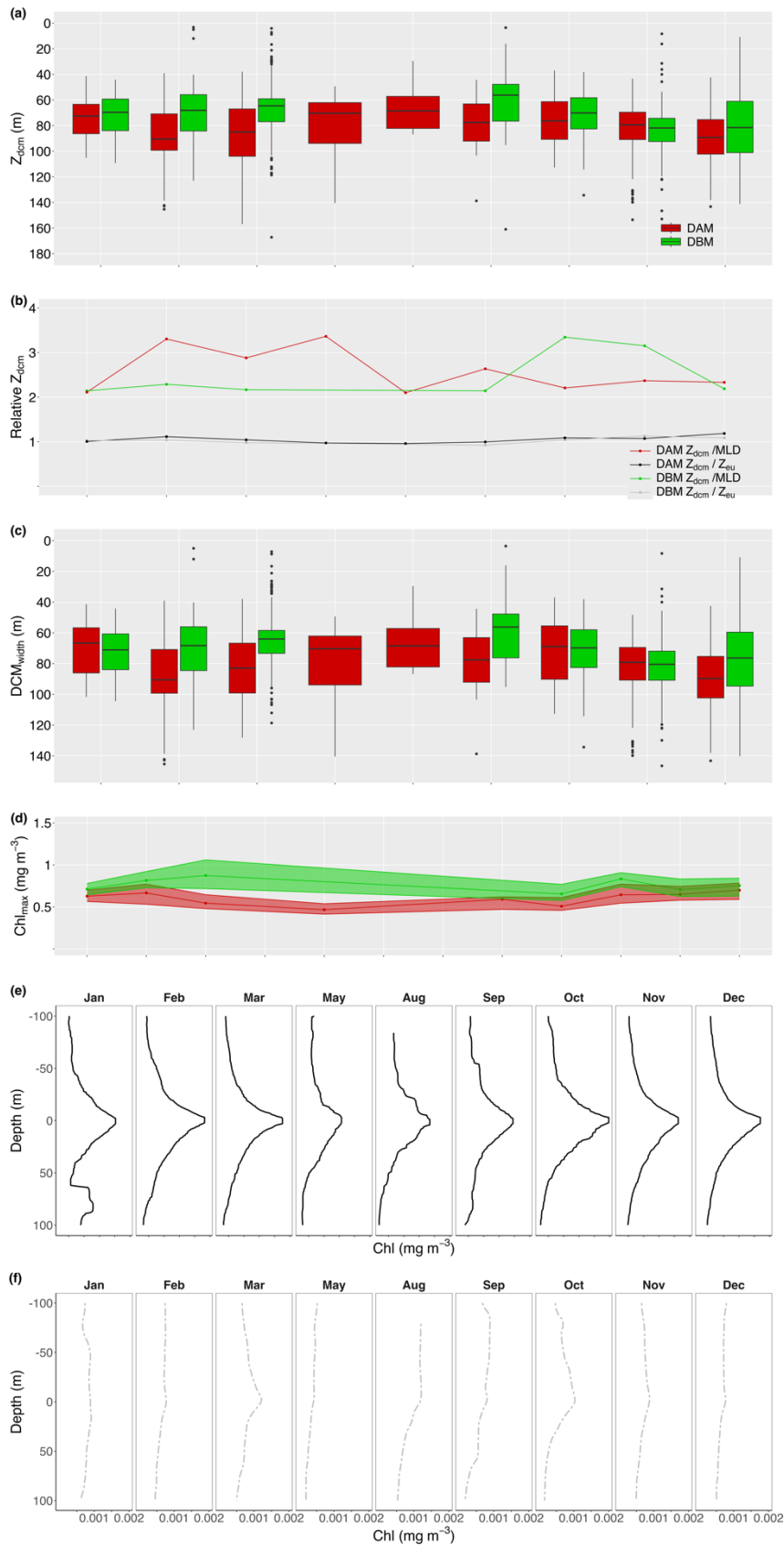


Figure S4: Median monthly true DCM depth (Z_{dcm} ; panel a) and relative depth in relation to the bottom of the mixed-layer (Z_{dcm}/MLD) and euphotic zone (Z_{dcm}/Z_{eu} ; panel b) for DAMs and DBMs separately.

Panel (c) and (d) reflect the seasonal change in width and maximum chlorophyll concentration at the DBM/DCM. Shaded ribbons in panel (d) indicate the 25th and 75th quartiles. Median vertical profiles of chlorophyll and backscatter data are provided in panel (e) and (f), respectively. Only clusters/months for which more than 10 vertical profiles were available have been included.