



Supplement of

Air–Sea Interactions and Biogeochemical Responses to Medicane Daniel

Babita Jangir and Ehud Strobach

Correspondence to: Babita Jangir (bj11@iitbbs.ac.in)

The copyright of individual parts of the supplement might differ from the article licence.

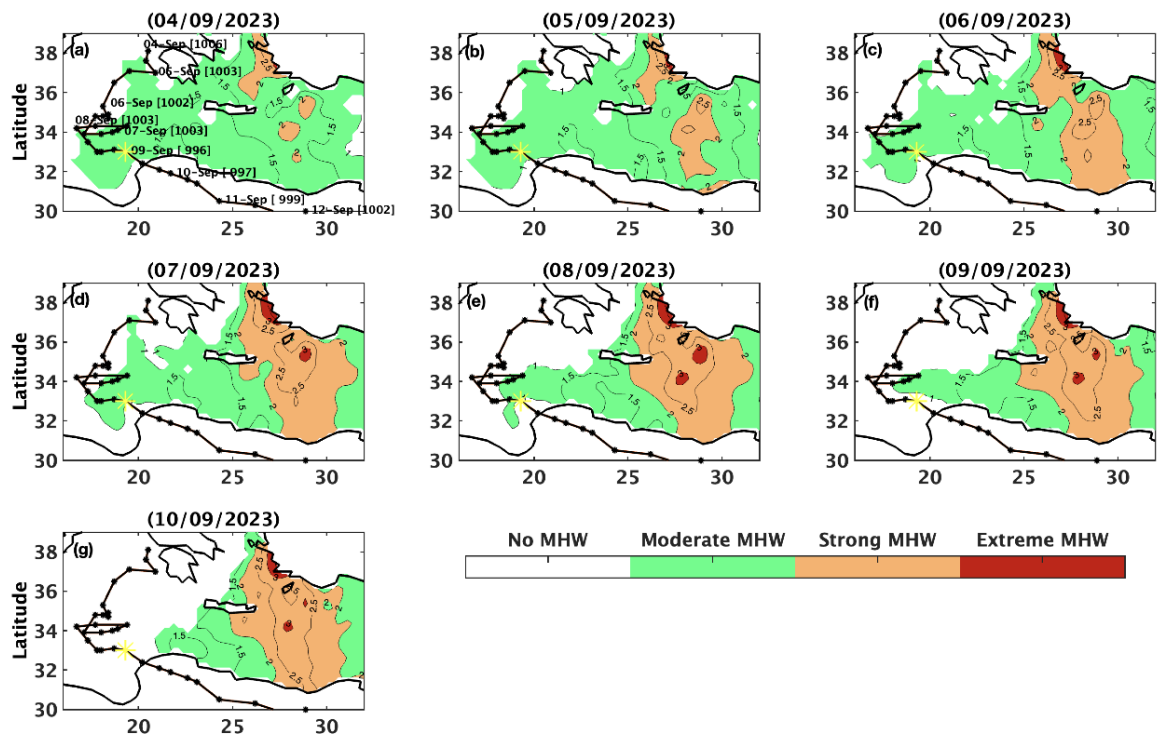


Figure S1: Medcane Daniel's path overlaid on MHW conditions for different days. The black line shows the anomaly contours.

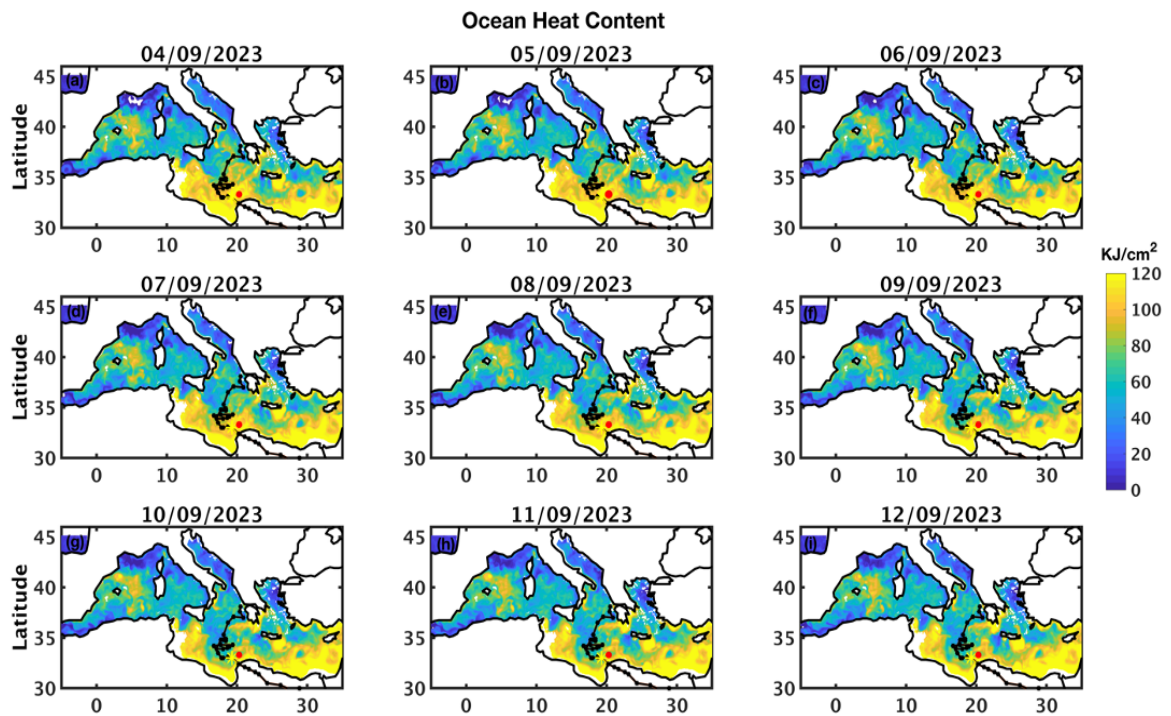


Figure S2: Medcane Daniel's path overlaid on the ocean heat content. The yellow star shows the intensification location, whereas the red dot shows the eddy location.

Latent heat Flux with MSLP contours

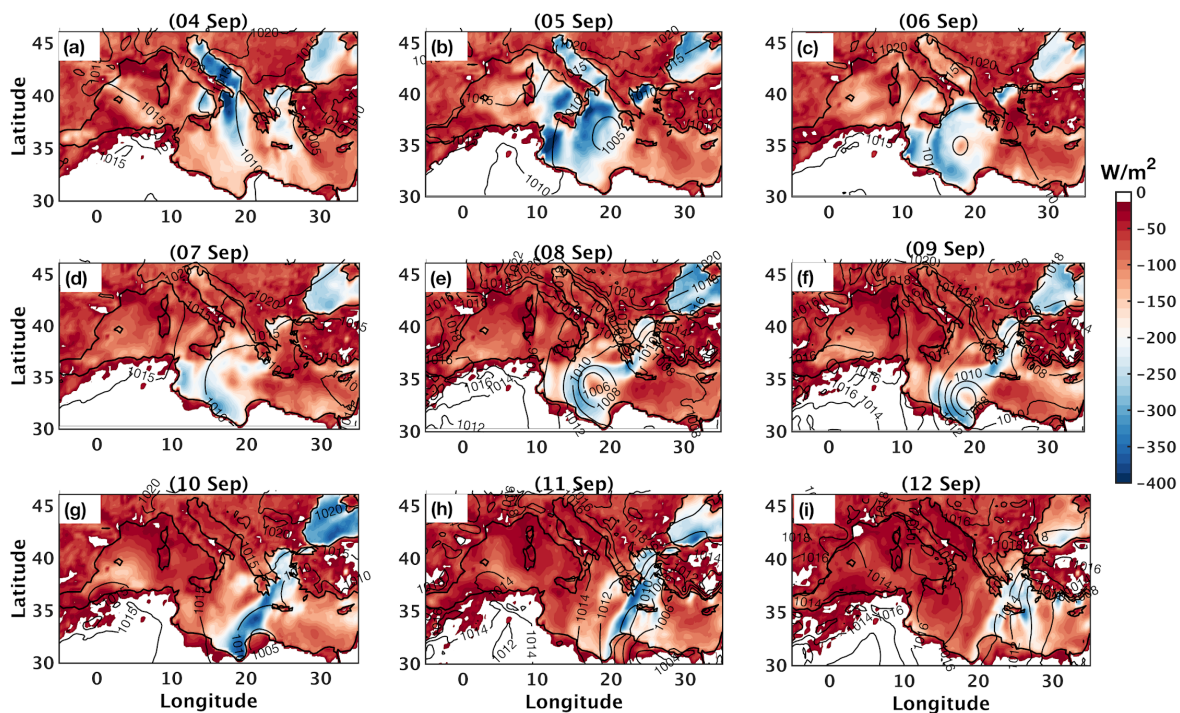


Figure S3: Contours of the daily mean of MSLP overlaid on the daily mean of latent heat fluxes (positive downward).

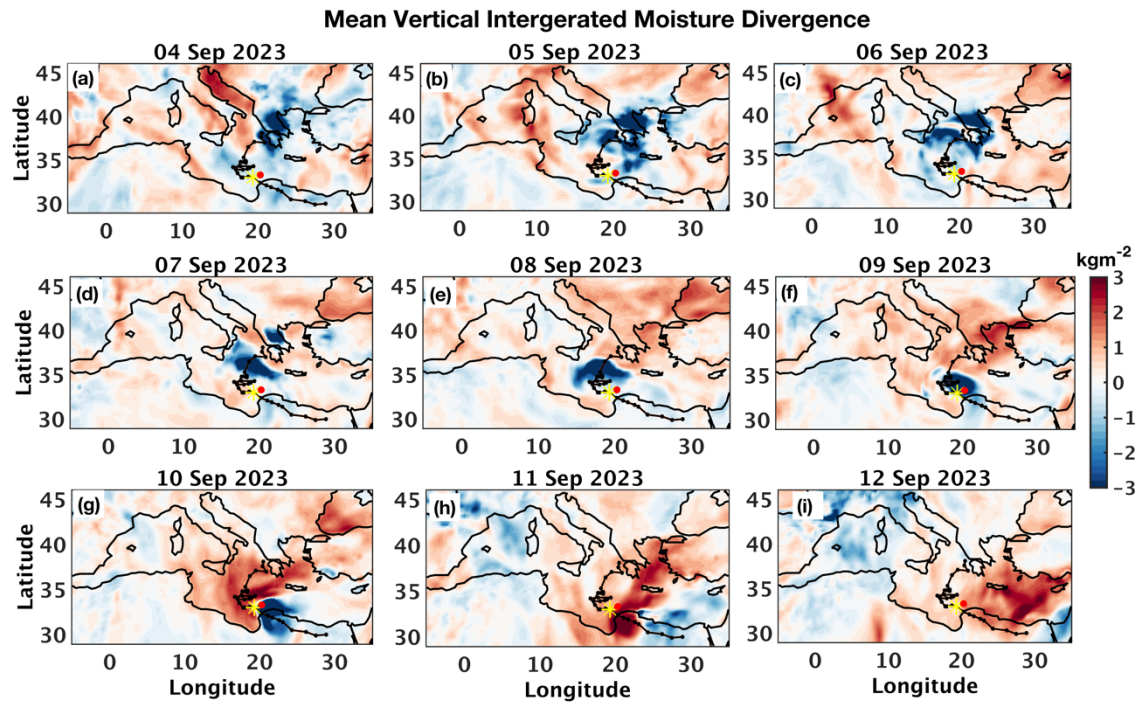


Figure S4. Medicane Daniel's path overlaid on the daily mean of vertically integrated moisture divergence. The yellow star and the red dot show the maximum intensity location of the medicane and the location of the WCE, respectively.

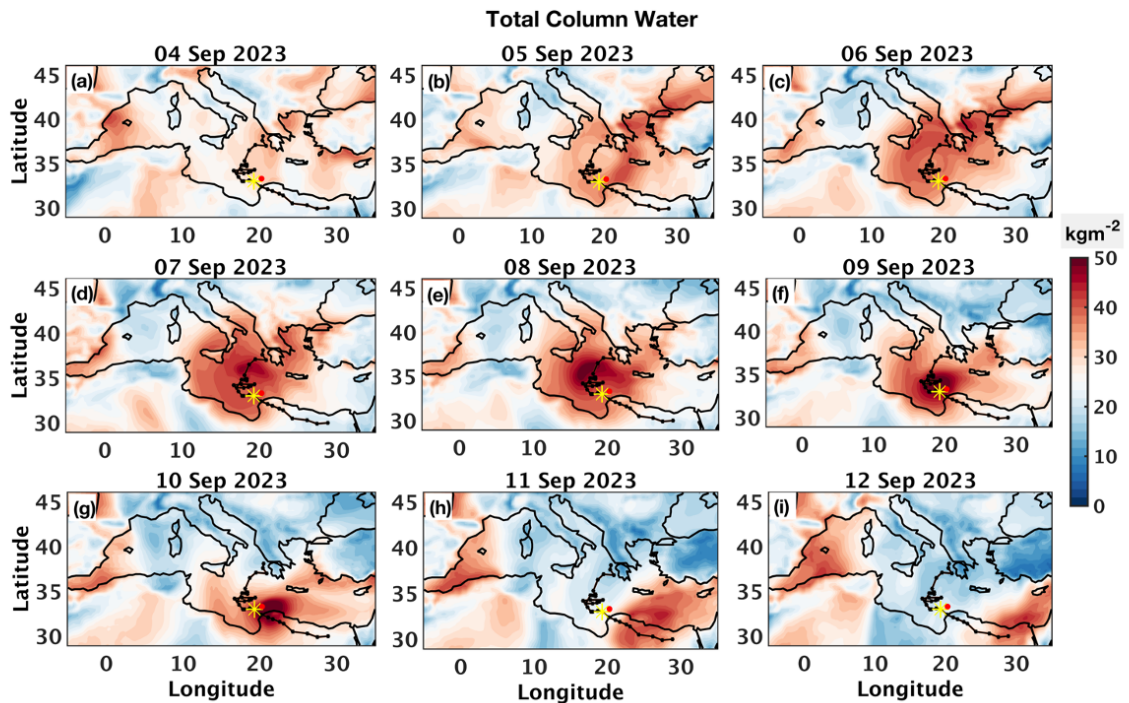


Figure S5. Medicane Daniel's path overlaid on the daily mean of the total water column. The yellow star and the red dot show the maximum intensity location of the medicane and the location of the WCE, respectively.

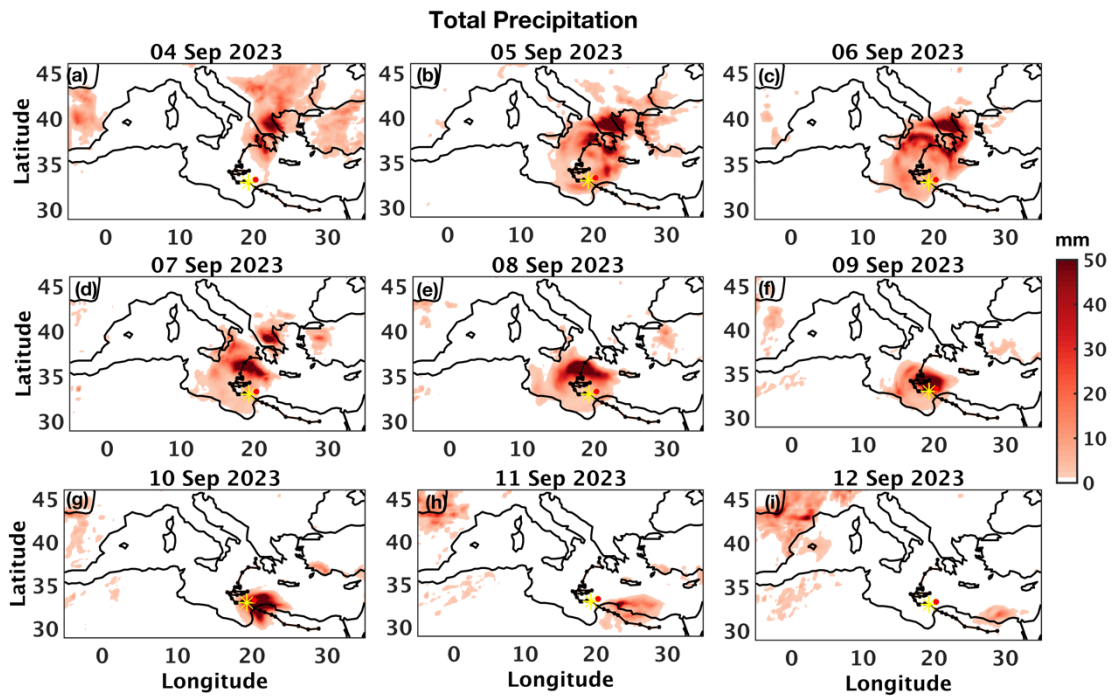


Figure S6. *Medicane Daniel's path overlaid on the daily mean of total precipitation. The yellow star and the red dot show the maximum intensity location of the medicane and the location of the WCE, respectively.*