

## **Additional Electronic Material to:**

NW Adriatic Sea biogeochemical variability in the last 20 years (1986–2005)

**L. Tedesco**<sup>1,2</sup>, **G. Socal**<sup>3</sup>, **F. Bianchi**<sup>3</sup>, **F. Acri**<sup>3</sup>, **D. Veneri**<sup>3</sup>, and **M. Vichi**<sup>1,4</sup>

<sup>1</sup> Centro Euro-Mediterraneo per i Cambiamenti Climatici (CMCC), Bologna, Italy

<sup>2</sup> University of Bologna, Centro Interdipartimentale di Ricerca per le Scienze Ambientali (CIRSA), Ravenna, Italy

<sup>3</sup> CNR - ISMAR, Istituto di Scienze Marine, Venezia, Italy

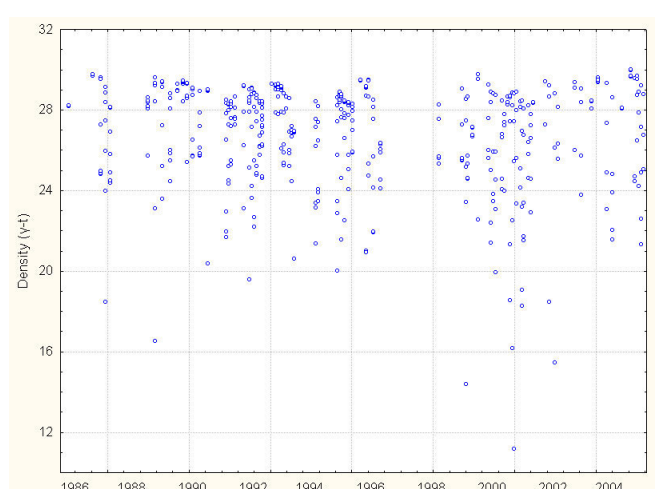
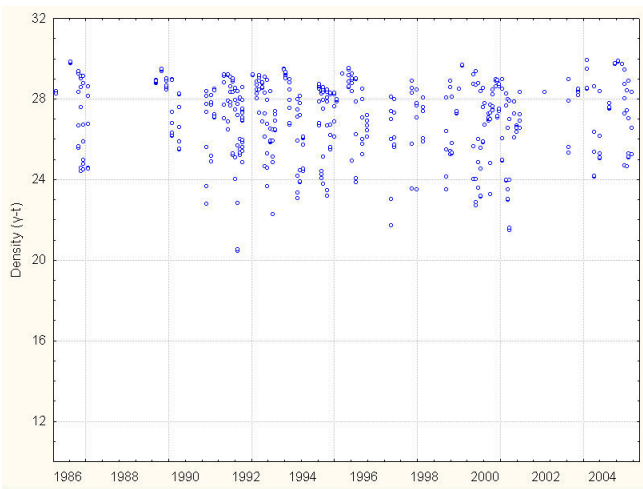
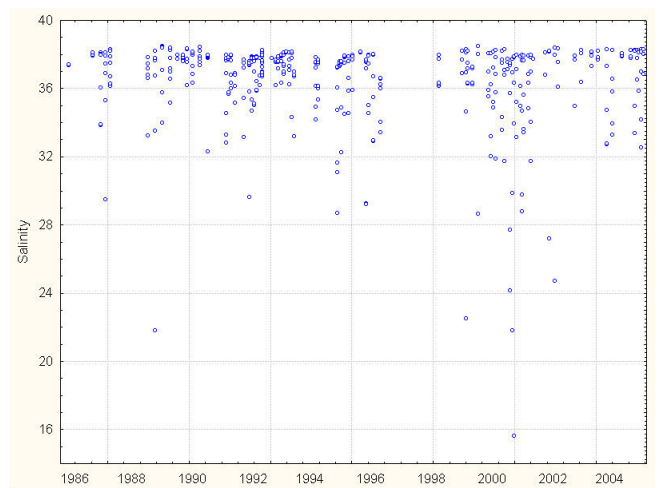
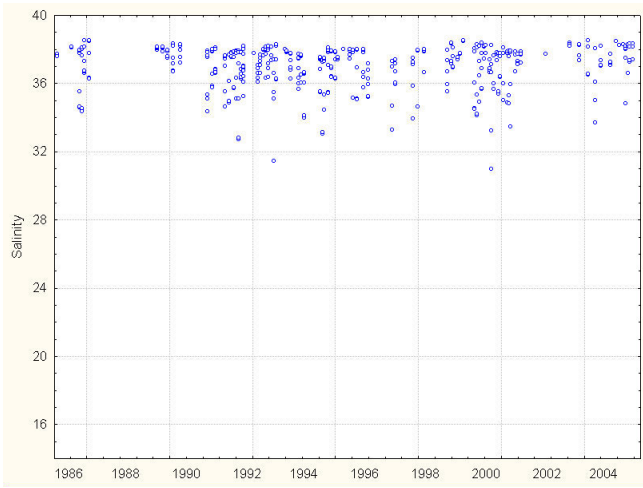
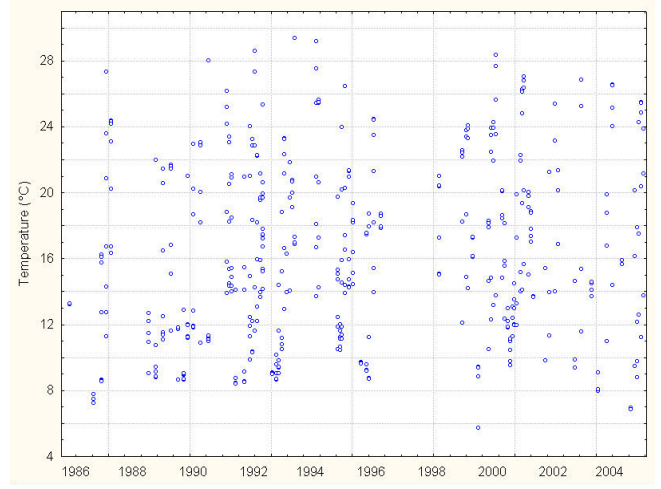
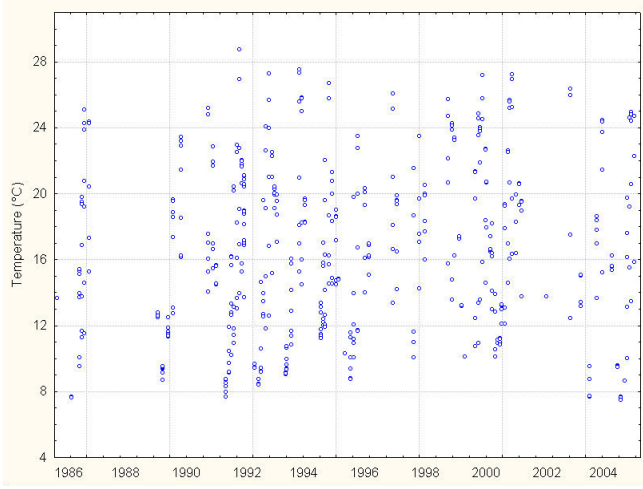
<sup>4</sup> Istituto Nazionale di Geofisica e Vulcanologia, Bologna, Italy

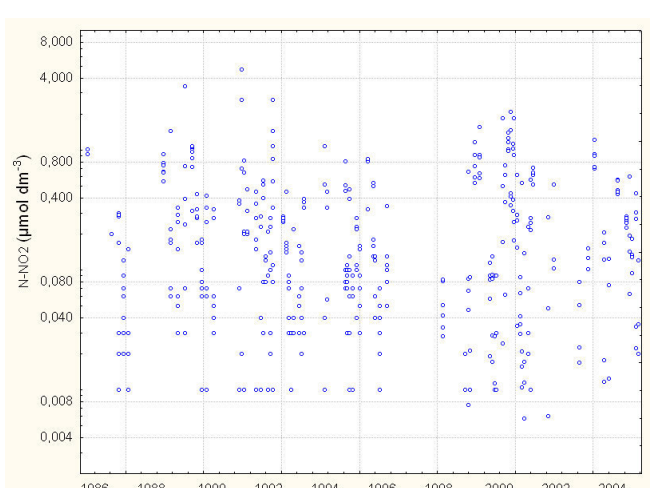
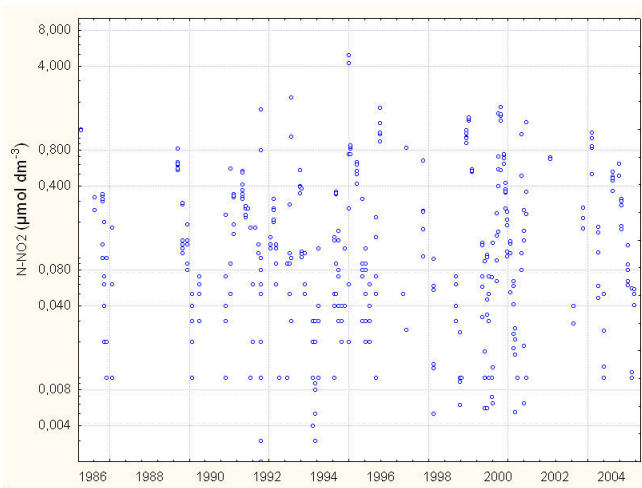
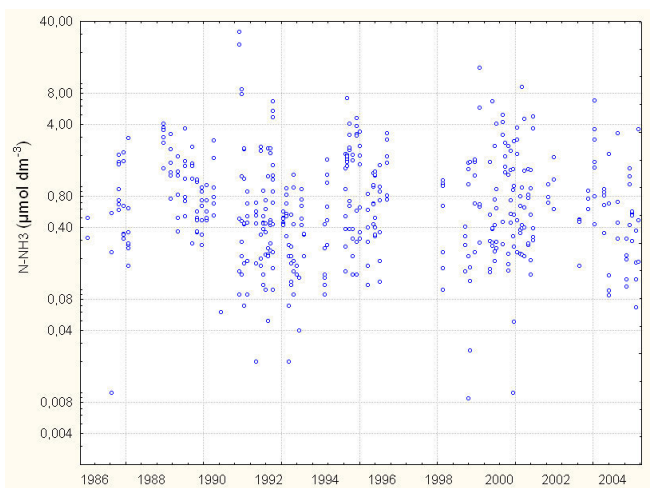
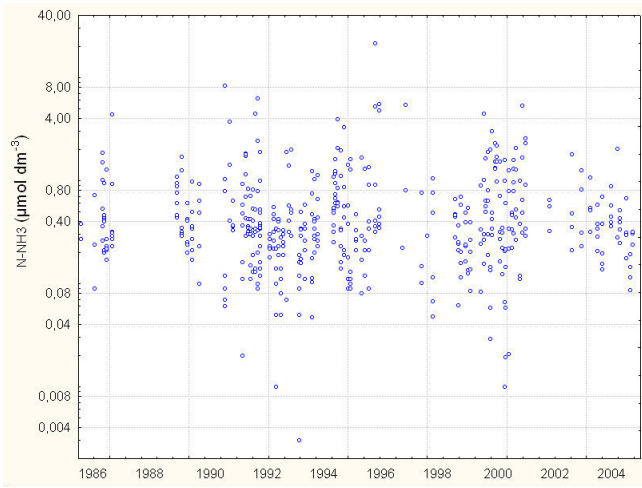
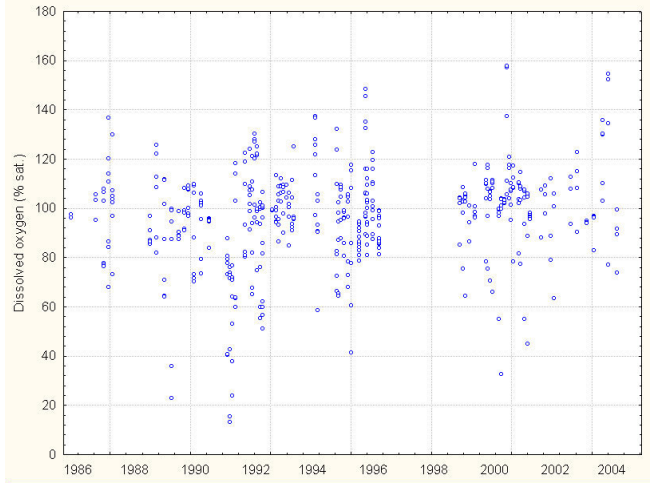
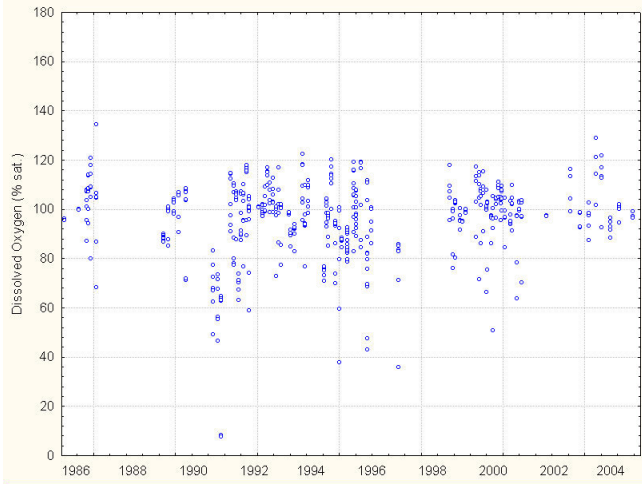
**Correspondence to: L. Tedesco (letizia.tedesco@cmcc.it)**

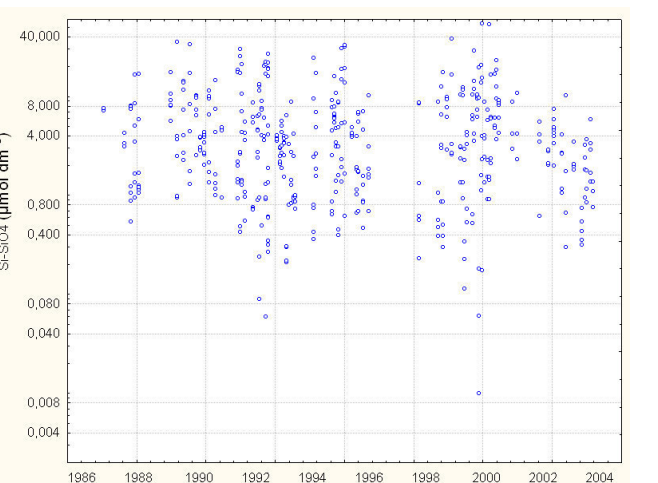
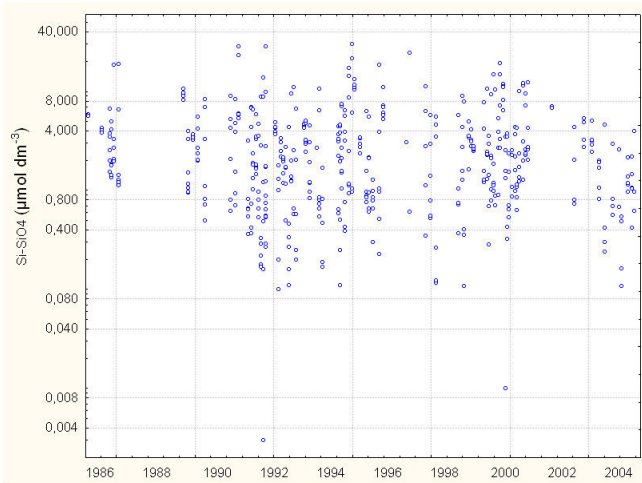
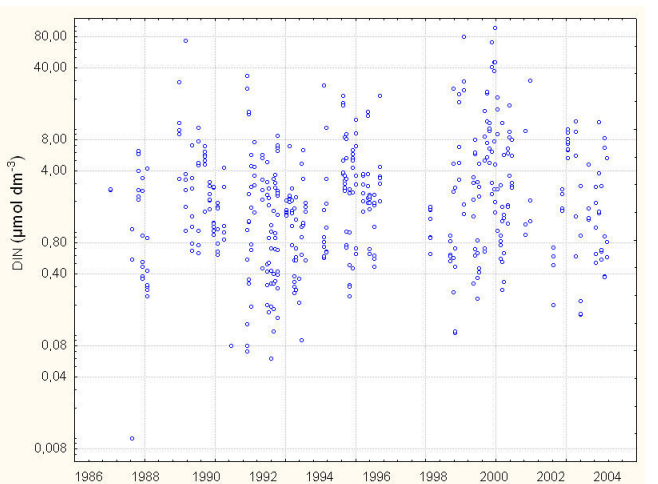
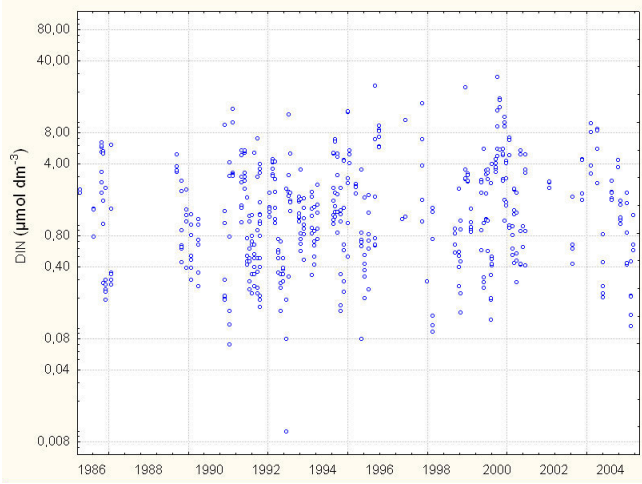
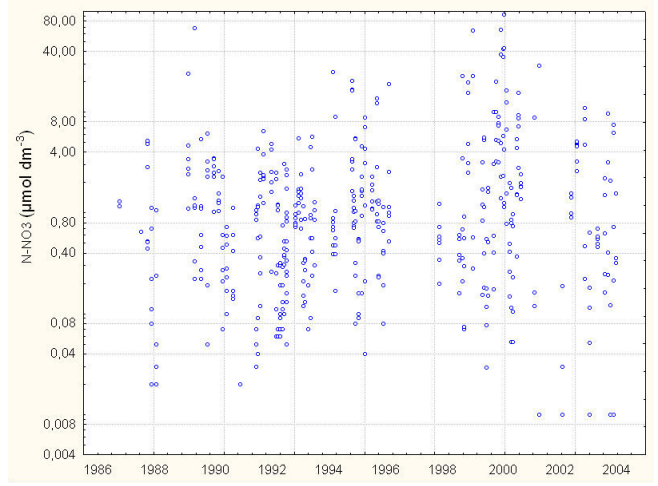
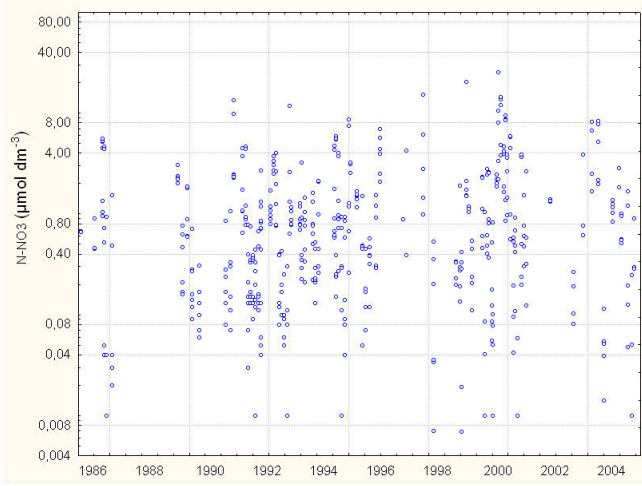
**Table 1: Spearman correlations (r coefficient, p level and significance) between Po discharge and temperature and salinity at C10 and E06 (1 week time-lag).**

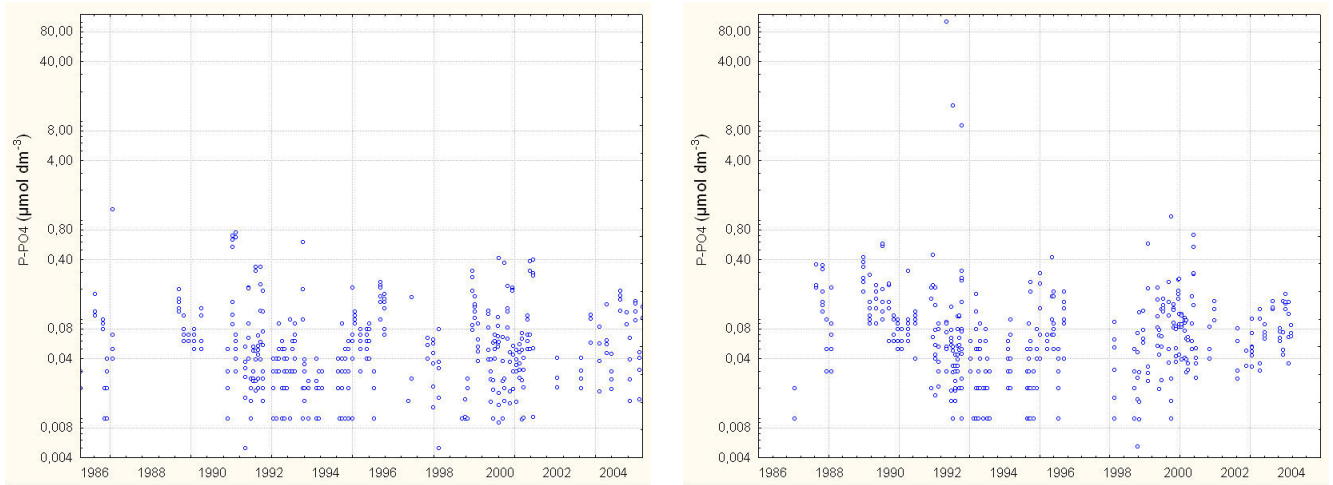
**Fig.1: Time series plots of the measured variables (except chl-*a*): C10, left and E06, right (nutrients, log scale).**

**Fig.2: Po river correlations with T (above) and S (below) at the surface: C10, left and E06, right.**





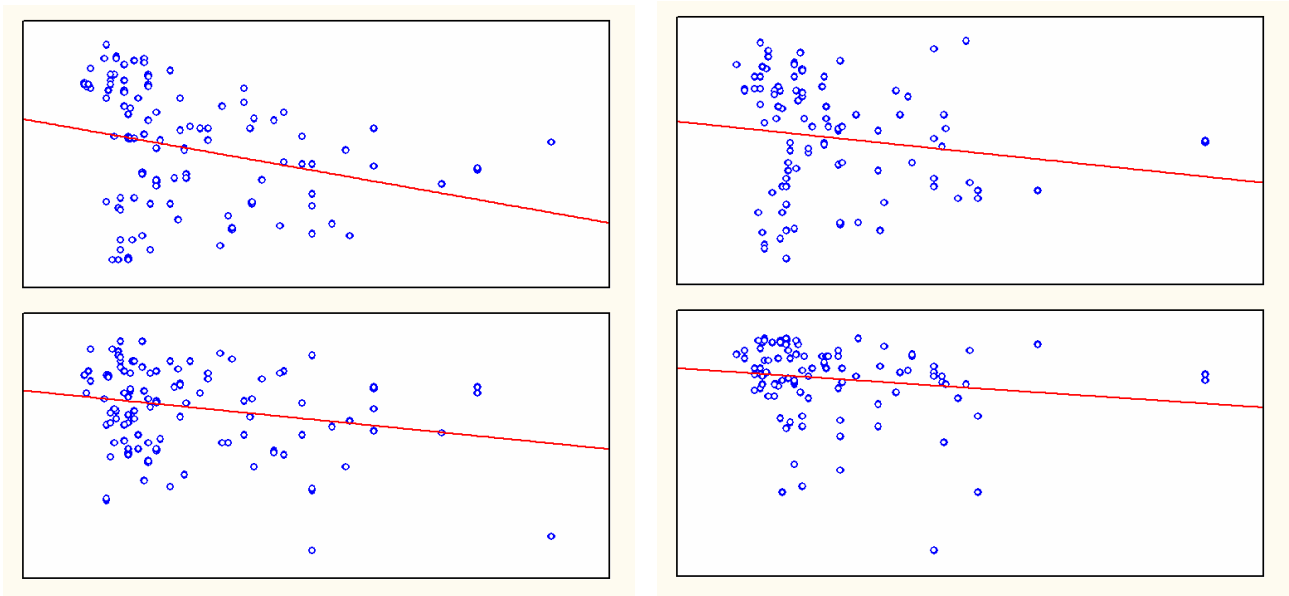




**Fig.1: Time series plots of the measured variables (except chl-*a*): C10, left and E06, right (nutrients, log scale).**

**Table 1: Spearman correlations (r coefficient, p level and significance) between Po discharge and temperature and salinity at C10 and E06 (1 week time-lag).**

	C10: T vs. Po	C10: S vs. Po	E06: T vs. Po	E06: S vs. Po
r	-0.363	-0.172	-0.251	-0.211
p	<0.001	0.041	0.005	0.0186
Sign.	***	*	**	*



**Fig.2: Po river correlations with T (above) and S (below) at the surface: C10, left and E06, right.**