



*Corrigendum to*

**“Integration of remote sensing data and surface observations to estimate the impact of the Russian wildfires over Europe and Asia during August 2010” published in Biogeosciences, 8, 3771–3791, 2011**

**L. Mei<sup>1, 8</sup>, Y. Xue<sup>1, 2</sup>, G. de Leeuw<sup>3, 4, 5</sup>, J. Guang<sup>1</sup>, Y. Wang<sup>1, 8</sup>, Y. Li<sup>1, 8</sup>, H. Xu<sup>1, 8</sup>, L. Yang<sup>6</sup>, T. Hou<sup>7, 8</sup>, X. He<sup>1, 8</sup>, C. Wu<sup>1</sup>, J. Dong<sup>1, 8</sup>, and Z. Chen<sup>7, 8</sup>**

<sup>1</sup>State Key Laboratory of Remote Sensing Science, Jointly Sponsored by the Institute of Remote Sensing Applications of Chinese Academy of Sciences and Beijing Normal University, Institute of Remote Sensing Applications, Chinese Academy of Sciences, Beijing 100101, China

<sup>2</sup>Faculty of Computing, London Metropolitan University, London N7 8DB, UK

<sup>3</sup>Department of Physics, University of Helsinki, Helsinki, Finland

<sup>4</sup>Finnish Meteorological Institute, Climate Change Unit, Helsinki, Finland

<sup>5</sup>Netherlands Organisation for Applied Scientific Research TNO, Utrecht, The Netherlands

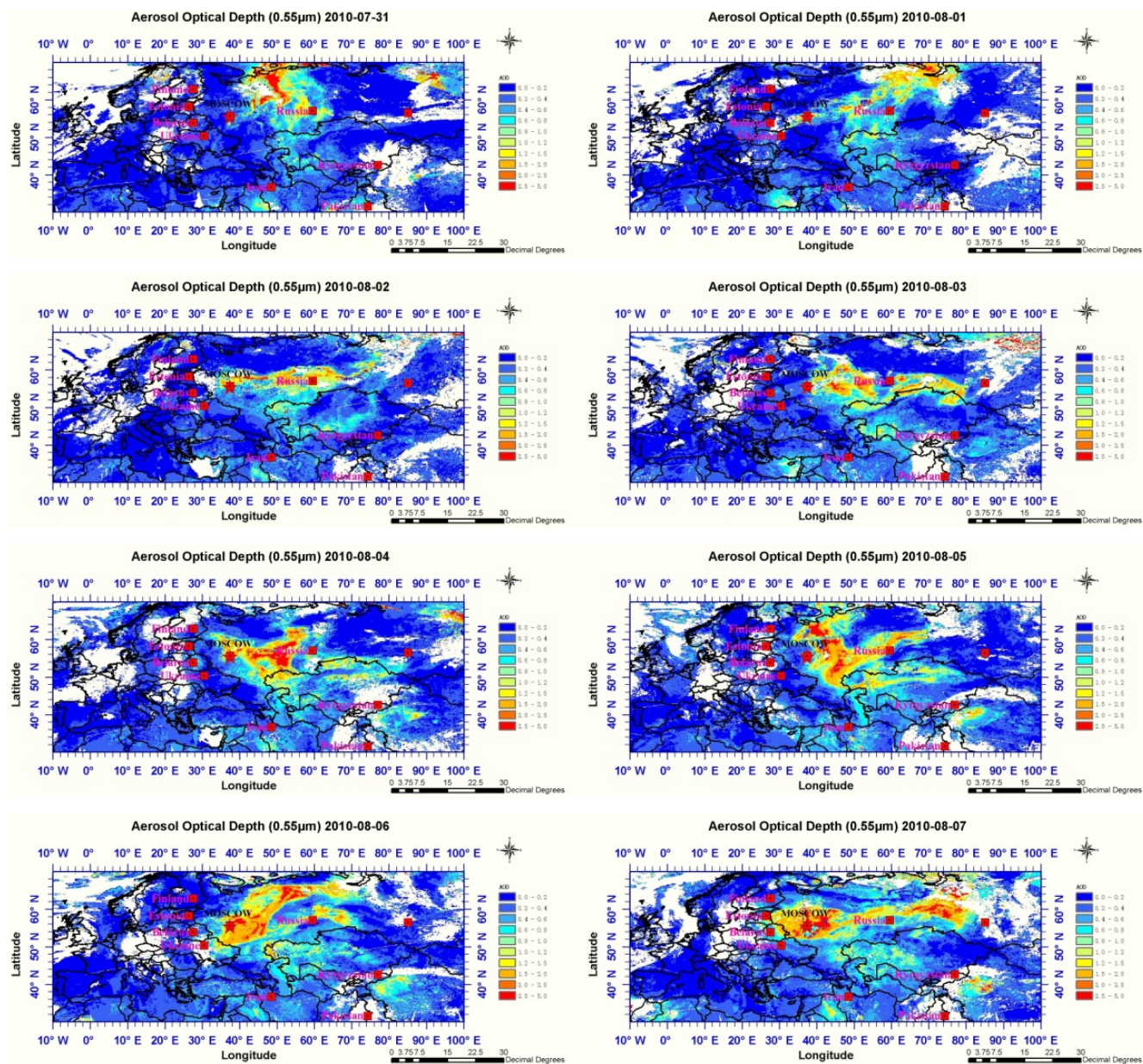
<sup>6</sup>School of Geography, Beijing Normal University, Beijing, China

<sup>7</sup>Center for Earth Observation and Digital Earth of the Chinese Academy of Sciences, Beijing, China

<sup>8</sup>Graduate University of the Chinese Academy of Sciences, Beijing, China

*Correspondence to:* Y. Xue (yxue@irsa.ac.cn)

In the paper “Integration of remote sensing data and surface observations to estimate the impact of the Russian wildfires over Europe and Asia during August 2010” by L. Mei et al. (Biogeosciences, 8, 3771–3791, 2011); Fig. 4 was printed twice as Figs. 4 and 5. Please find here the corrected figures.



**Fig. 4** AOD (at 0.55 μm) distribution over the study area for the period from 31 July to 15 August 2010. The AOD was obtained from integration of the AOD retrieved from three different methods as described in the text.

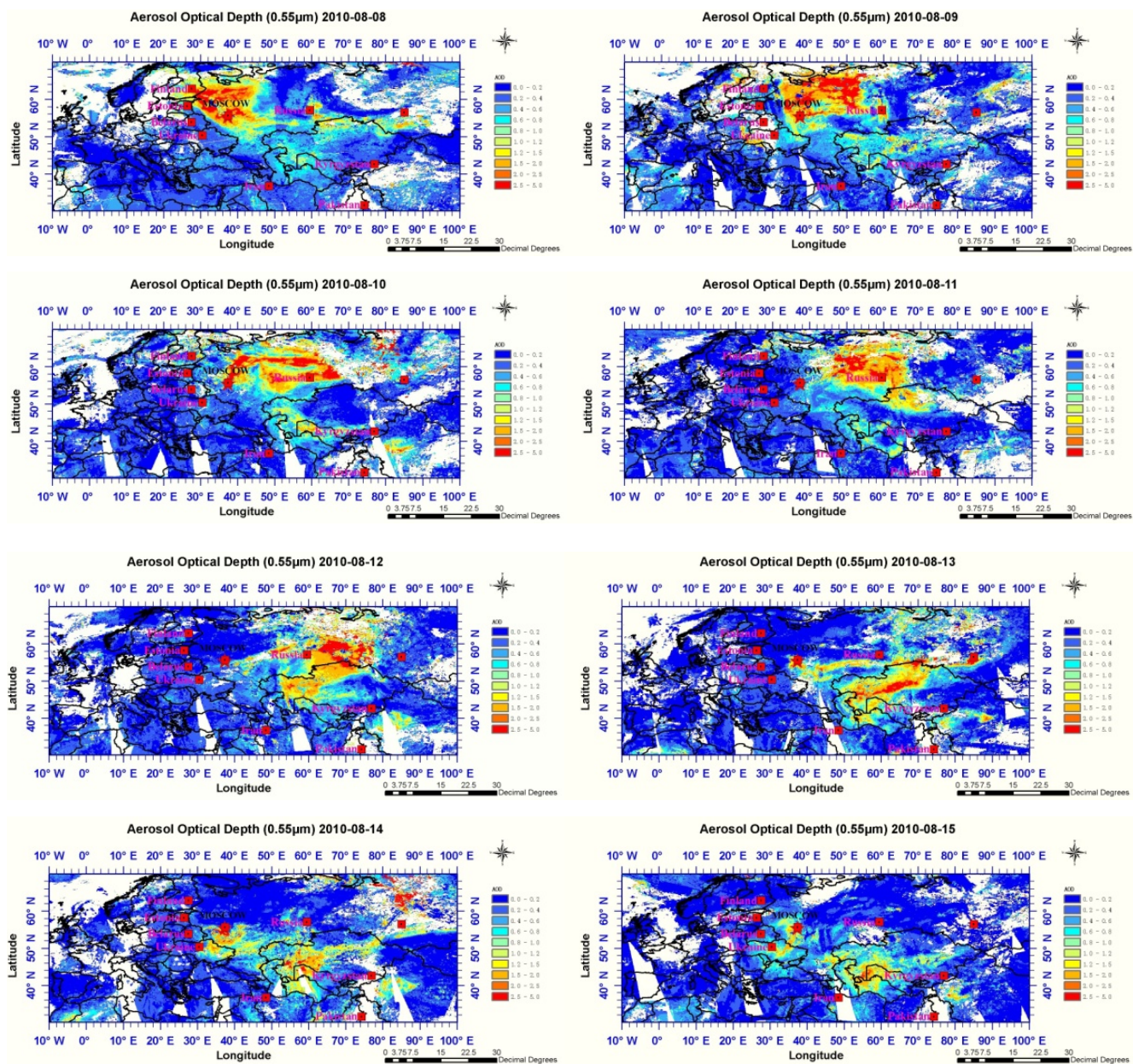
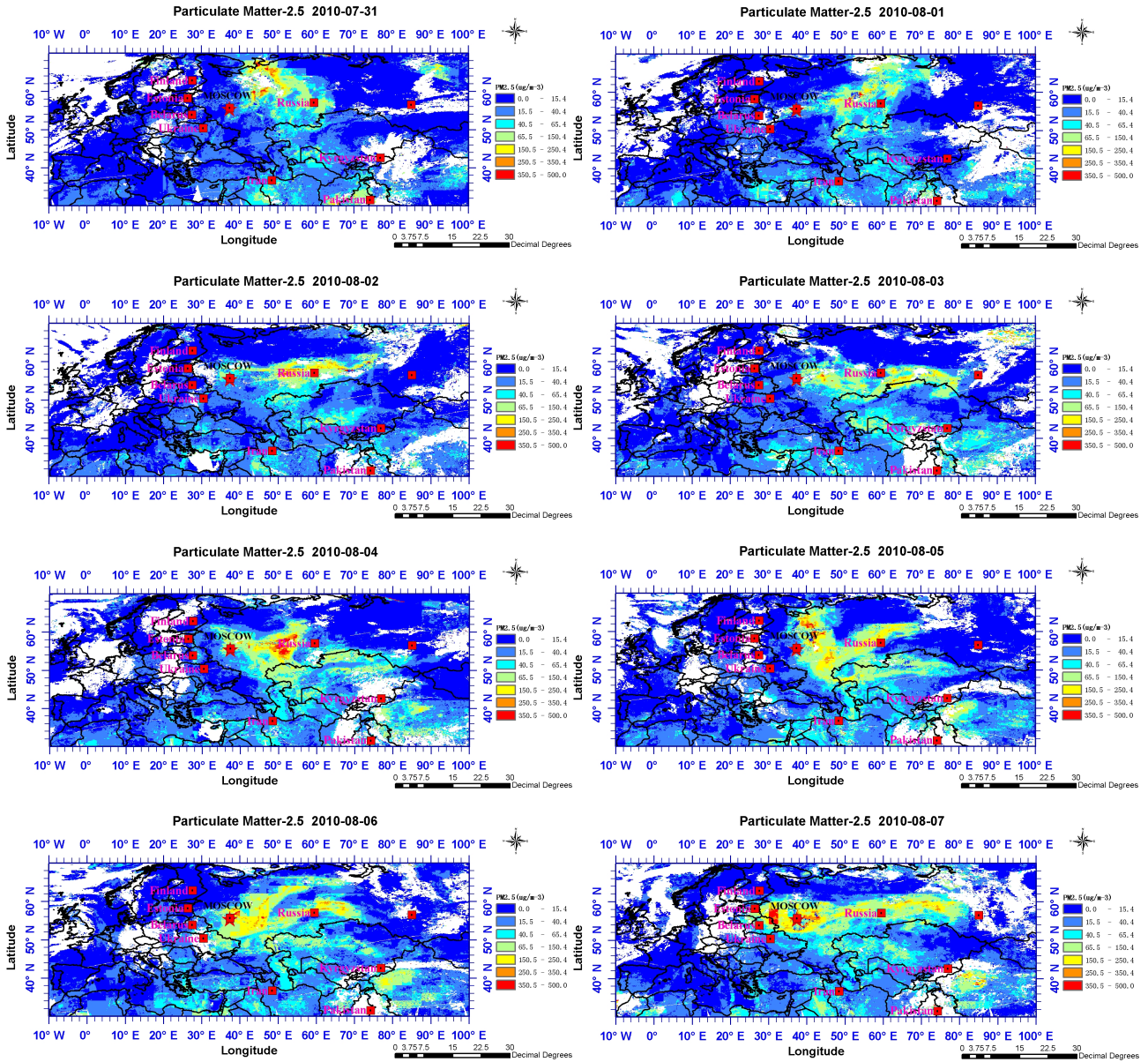


Fig. 4 Continued.



**Fig. 5** PM<sub>2.5</sub> (in µg m<sup>-3</sup>) distribution over the study area for the period from 31 July to 15 August 2010. The mean satellite-derived daily PM<sub>2.5</sub> concentrations were calculated from the methods as described in the text.

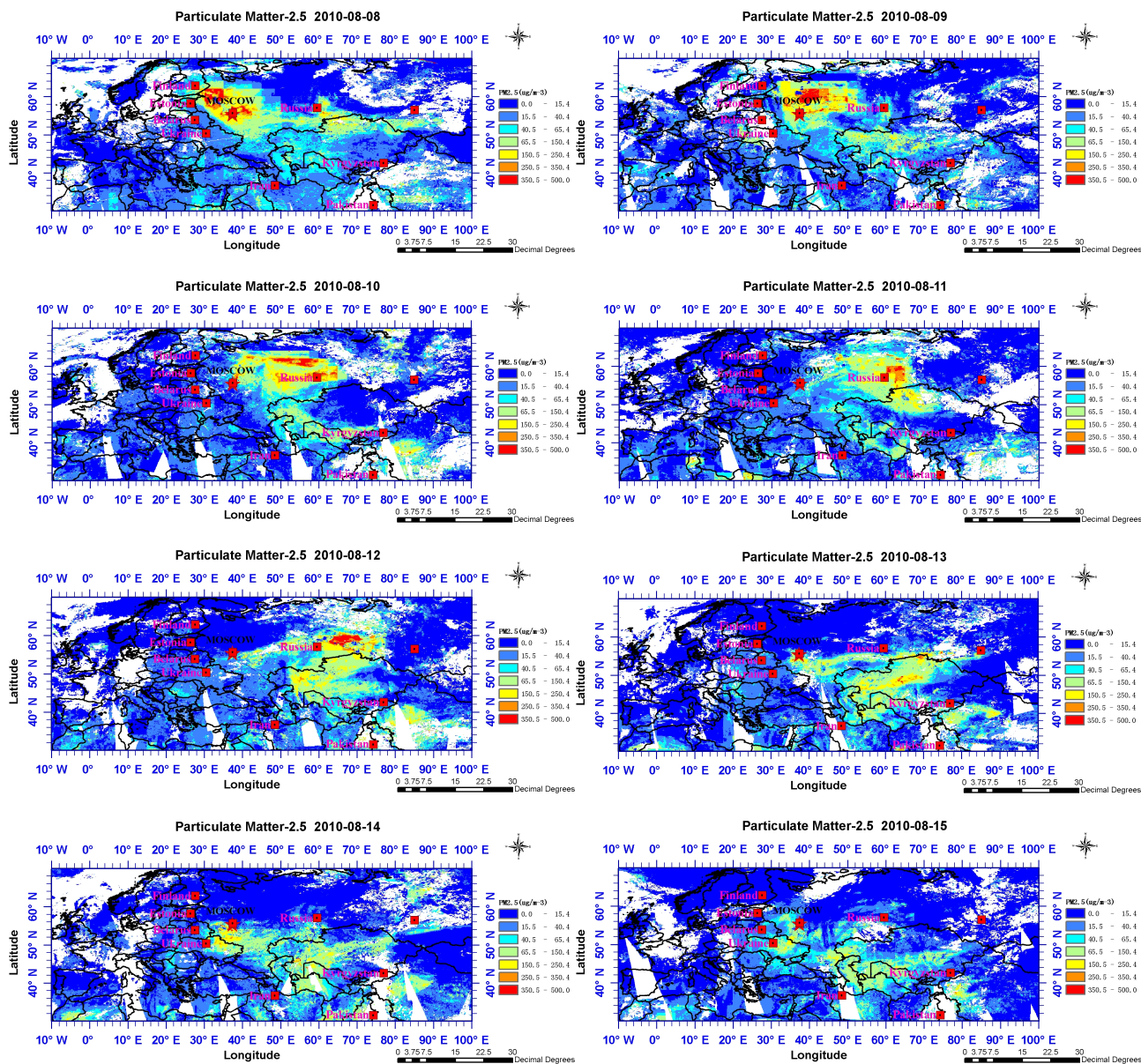


Fig. 5 Continued.