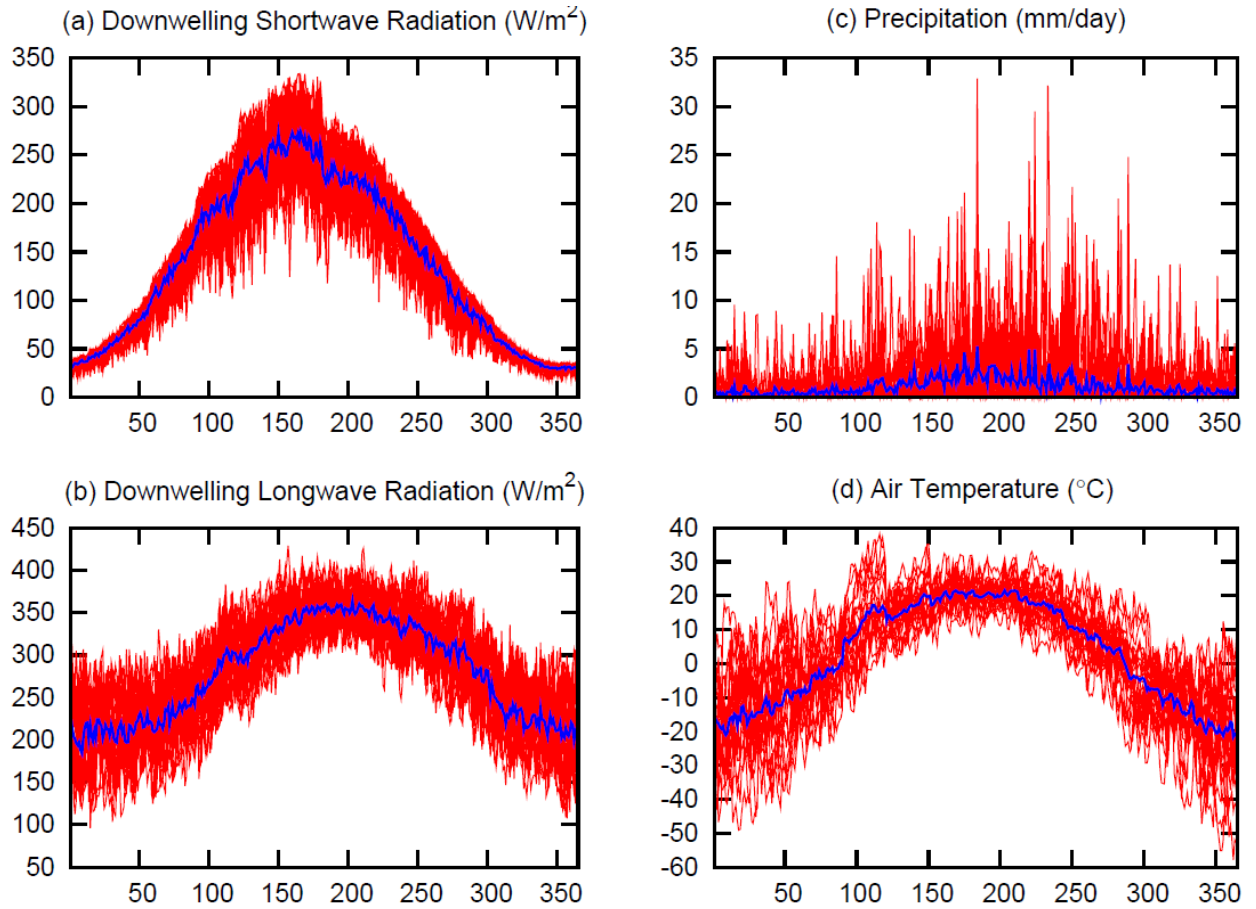


1

## Supplementary Figures



2

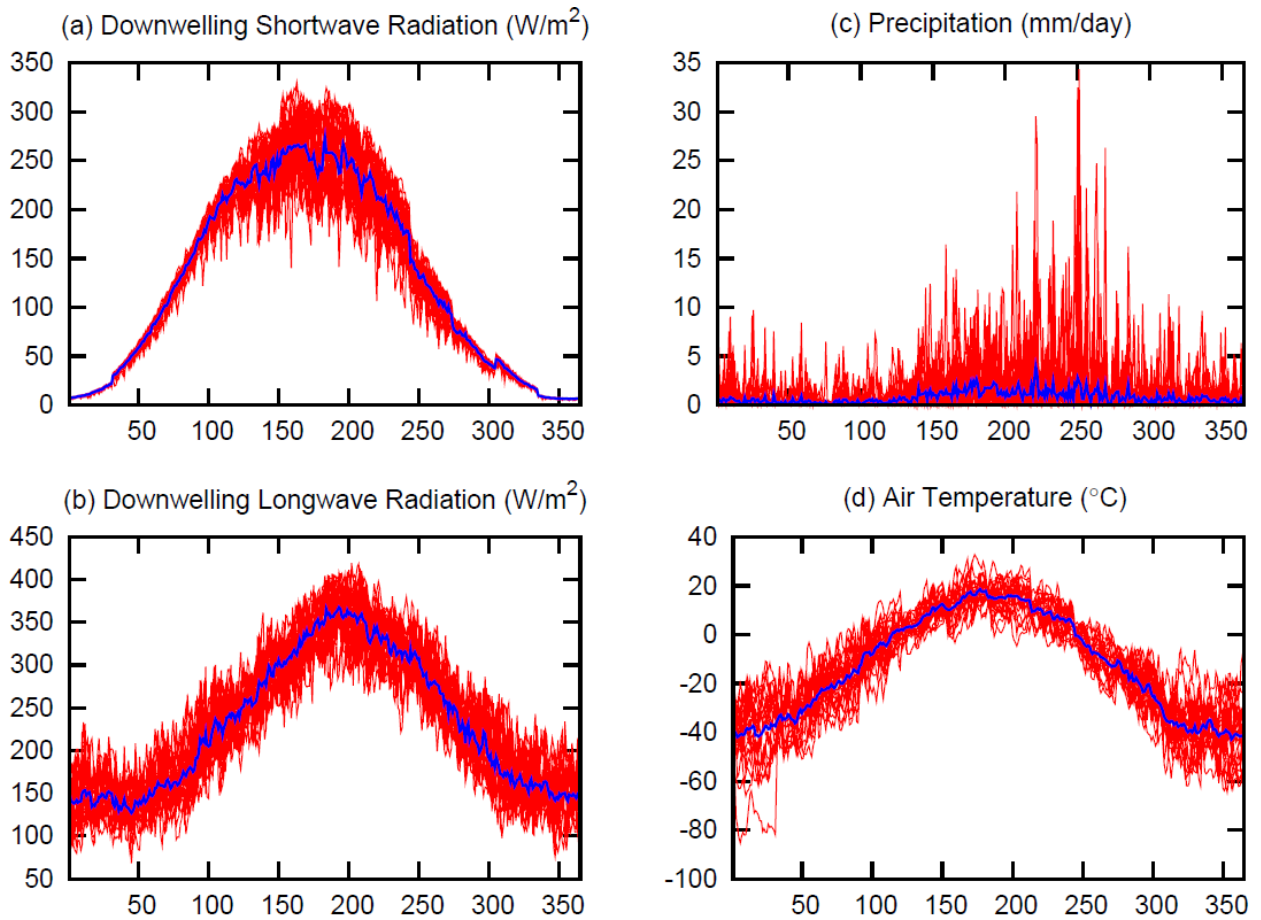
3

4

5

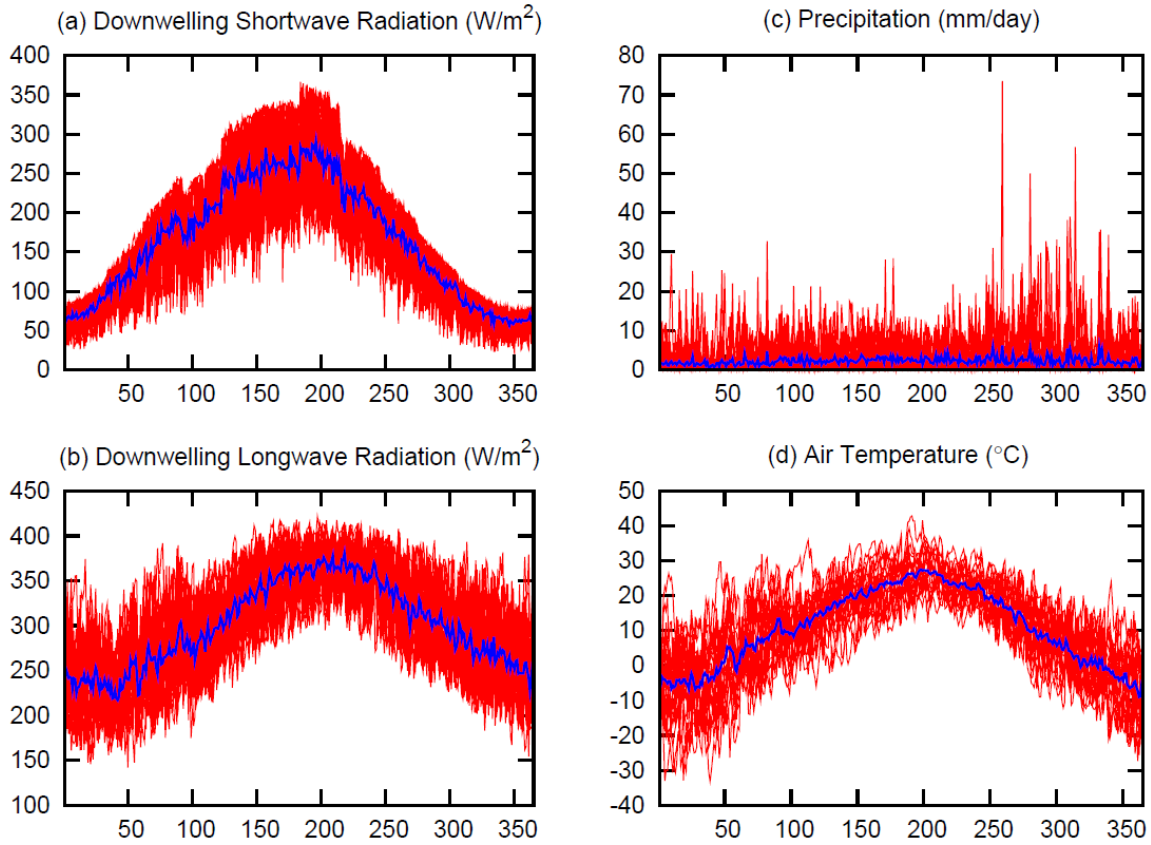
6

Figure S1: Annual cycle of primary meteorological variables used to drive the coupled CLASS and CTEM models at the Manitoba location. The red lines in each panel show daily values for the individual 21 years and the blue line shows the average of daily values across the 21 years.



7

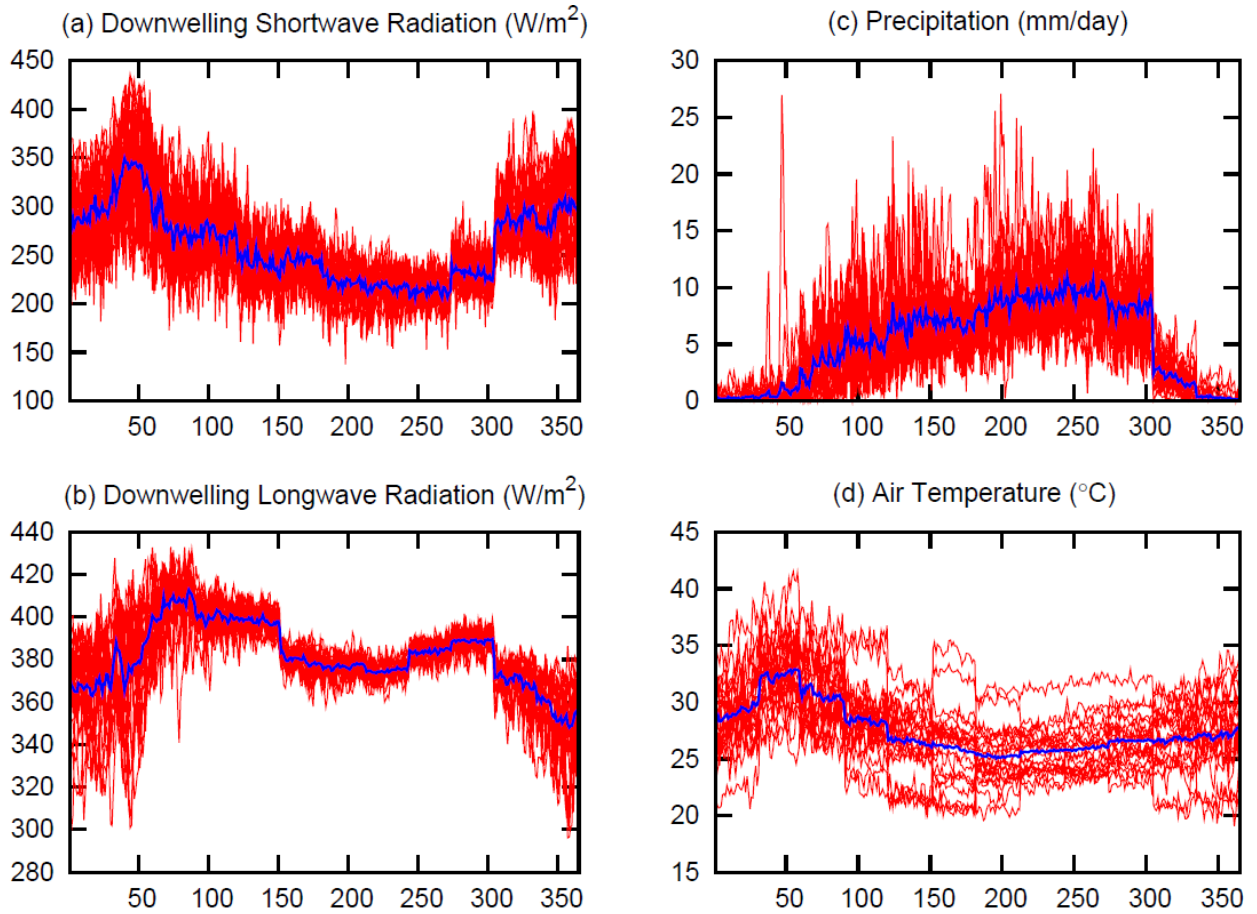
8 Figure S2: Annual cycle of primary meteorological variables used to drive the coupled  
 9 CLASS and CTEM models at the Siberia location. The red lines in each panel show daily  
 10 values for the individual 21 years and the blue line shows the average of daily values across  
 11 the 21 years.



12

13 Figure S3: Annual cycle of primary meteorological variables used to drive the coupled  
 14 CLASS and CTEM models at the eastern U.S. location. The red lines in each panel show  
 15 daily values for the individual 21 years and the blue line shows the average of daily values  
 16 across the 21 years.

17



18

19 Figure S4: Annual cycle of primary meteorological variables used to drive the coupled  
 20 CLASS and CTEM models at the Africa location. The red lines in each panel show daily  
 21 values for the individual 21 years and the blue line shows the average of daily values across  
 22 the 21 years.

23