

Supplementary information: A simple model for  
predicting the global distribution of the N<sub>2</sub> fixing  
host genus *Alnus Mill.*: impact of climate change  
on the global distribution in 2100

A. Sakalli

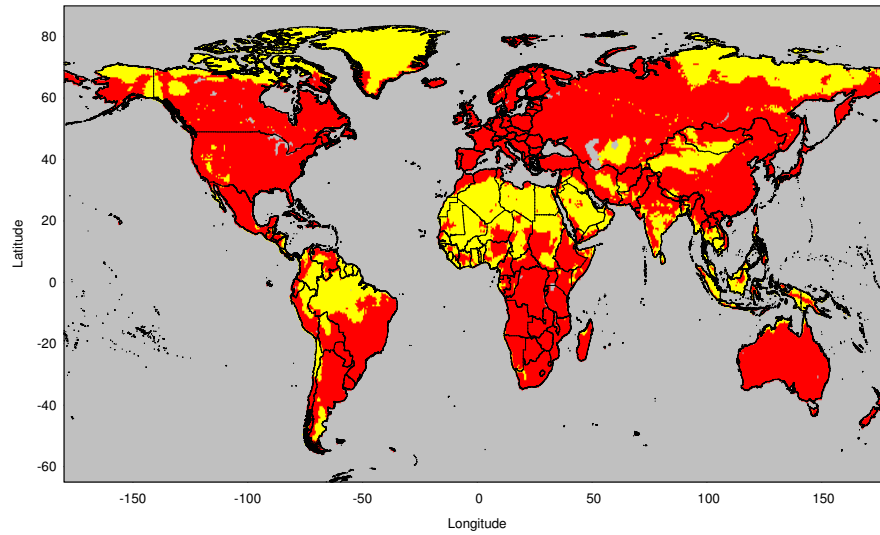


Figure S1: Distribution of grid elements (red) which were identified as potential sites with alder based on the climate functions 1..3 (see Fig. 3). Yellow: grid elements were not identified as potential distribution area for alder.

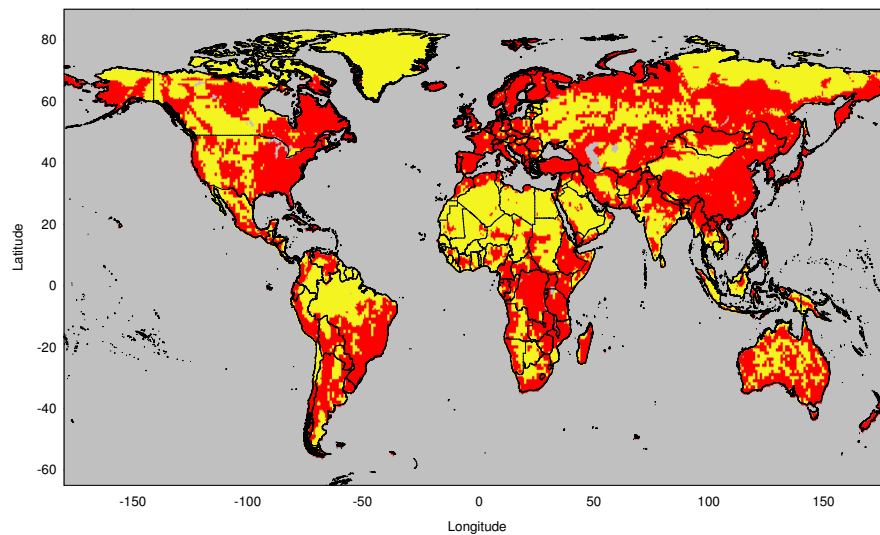


Figure S2: Distribution of grid elements (red) which were identified as potential sites with alder based on the climate functions 1..3 (see Fig. 3). In this version of the model, restriction by soil units as found in Tab. 1 was applied. Yellow: grid elements were not identified as potential distribution area for alder.

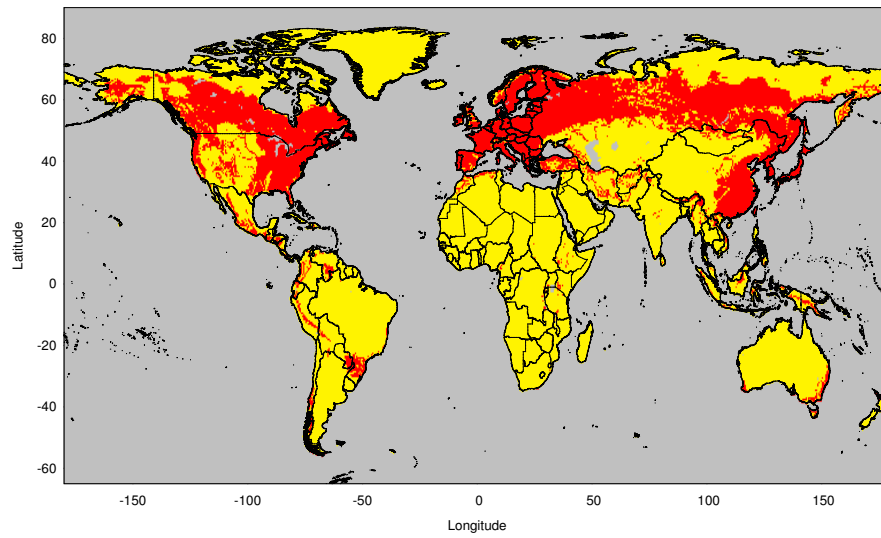


Figure S3: Distribution of grid elements (red) which were identified as potential sites with alder based on the climate functions 1. .3 (see Fig. 3). In this version of the model, restriction by vegetation types (see Tab. 2) was applied. Yellow: grid elements were not identified as potential distribution area for alder.