

**Dynamics of
particulate organic
carbon flux in a
global ocean model**

I. Lima et al.

Dynamics of particulate organic carbon flux in a global ocean model

I. D. Lima, P. J. Lam, and S. C. Doney

Woods Hole Oceanographic Institution, Department of Marine Chemistry & Geochemistry,
Woods Hole MA, USA

Received: 21 August 2013 – Accepted: 24 August 2013 – Published: 6 September 2013

Correspondence to: I. Lima (ivan@whoi.edu)

Published by Copernicus Publications on behalf of the European Geosciences Union.

[Title Page](#)

[Abstract](#)

[Introduction](#)

[Conclusions](#)

[References](#)

[Tables](#)

[Figures](#)



[Back](#)

[Close](#)

[Full Screen / Esc](#)

[Printer-friendly Version](#)

[Interactive Discussion](#)

Abstract

The sinking of particulate organic carbon (POC) is a key component of the ocean carbon cycle and plays an important role in the global climate system. However, the processes controlling the fraction of primary production that is exported from the euphotic zone (export ratio) and how much of it survives respiration in the mesopelagic to be sequestered in the deep ocean (transfer efficiency) are not well understood. In this study, we use a three-dimensional, coupled physical-biogeochemical model (CCSM-BEC) to investigate the processes controlling the export of particulate organic matter from the euphotic zone and its flux to depth. We also compare model results with sediment trap data and other parameterizations of POC flux to depth to evaluate model skill and gain further insight into the causes of error and uncertainty in POC flux estimates. In the model, export ratios are mainly a function of diatom relative abundance and temperature while absolute fluxes and transfer efficiency are driven by mineral ballast composition of sinking material. The temperature dependence of the POC remineralization length scale is modulated by denitrification under low O₂ concentrations and lithogenic (dust) fluxes. Lithogenic material is an important control of transfer efficiency in the model, but its effect is restricted to regions of strong atmospheric dust deposition. In the remaining regions, CaCO₃ content of exported material is the main factor affecting transfer efficiency. The fact that mineral ballast composition is inextricably linked to plankton community structure results in correlations between export ratios and ballast minerals fluxes (opal and CaCO₃), and transfer efficiency and diatom relative abundance that do not necessarily reflect ballast or direct ecosystem effects, respectively. This suggests that it might be difficult to differentiate between ecosystem and ballast effects in observations. The model's skill at reproducing sediment trap observations is equal to or better than that of other parameterizations. However, the sparseness and relatively large uncertainties of sediment trap data makes it difficult to accurately evaluate the skill of the model and other parameterizations. More POC flux observations, over a wider range of ecological regimes, are necessary to thoroughly evaluate and

Dynamics of particulate organic carbon flux in a global ocean model

I. Lima et al.

[Title Page](#)

[Abstract](#)

[Introduction](#)

[Conclusions](#)

[References](#)

[Tables](#)

[Figures](#)



[Back](#)

[Close](#)

[Full Screen / Esc](#)

[Printer-friendly Version](#)

[Interactive Discussion](#)



test model results and better understand the processes controlling POC flux to depth in the ocean.

1 Introduction

The transfer of carbon from the upper ocean to deep waters through the sinking of particulate biogenic material (biological pump, Volk and Hoffert, 1985) is a major component of the ocean carbon cycle and plays an important role in regulating atmospheric CO₂ levels (Archer et al., 2000; Siegenthaler et al., 2005). However, the processes controlling the fraction of primary production that is exported from the euphotic zone (export ratio) and how much of it survives respiration in the mesopelagic to be sequestered in the deep ocean (transfer efficiency) are not well understood (Boyd and Trull, 2007). Biogenic minerals (CaCO₃ and opal) are thought to be important controlling factors (ballast hypothesis) by increasing the density of sinking particles and/or providing protection against remineralization (Armstrong et al., 2002; François et al., 2002; Klaas and Archer, 2002). Ecosystem structure is also thought to play an important role (Guidi et al., 2009; Lam et al., 2011; Henson et al., 2012a,b; Wilson et al., 2012). According to this view, diatom dominated phytoplankton communities in productive areas, such as high latitude environments and upwelling regions, produce large, dense and relatively labile aggregates that are readily exported but decay rapidly at depth, resulting in a high export ratio but low transfer efficiency in these regions. Conversely, in lower latitude oligotrophic environments, where diatoms are largely absent, primary production is low and mostly regenerated, so the small fraction of material that is eventually exported is likely to be refractory and undergo relatively little degradation at depth, resulting in low export ratio but high transfer efficiency. A “packaging effect” may also be at work (François et al., 2002). Carbonate-dominated regions tend to produce hydrodynamic, fast-sinking fecal pellets that reach greater depths (high transfer efficiency), while opal-dominated regions tend to produce slower sinking, loose aggregates that are rapidly remineralized in the mesopelagic (lower transfer efficiency). Understanding

Dynamics of particulate organic carbon flux in a global ocean model

I. Lima et al.

[Title Page](#)

[Abstract](#)

[Introduction](#)

[Conclusions](#)

[References](#)

[Tables](#)

[Figures](#)

[⏪](#)

[⏩](#)

[◀](#)

[▶](#)

[Back](#)

[Close](#)

[Full Screen / Esc](#)

[Printer-friendly Version](#)

[Interactive Discussion](#)



the processes that control the flux of particulate organic material to the deep ocean so that we can quantify the strength and efficiency of the biological pump is essential to accurately project the ocean's response to and feedback on anthropogenic perturbations.

5 Sparse in situ data from sediment traps have relatively high associated uncertainties and do not resolve the spatial and temporal variability in the vertical particle flux. This makes it difficult to understand the mechanisms driving the vertical particle flux and leads to large uncertainties in global and regional budgets. In this context, numerical models offer a powerful research tool. Models supplement observations by providing
10 flux estimates in under-sampled regions and at spatial-temporal coverage and resolution that are impractical or difficult to sample, thus, allowing us to investigate phenomena poorly resolved by observational data. Models also provide the means to synthesize the available information into a practical and useful framework that can be used for quantitative analysis and evaluation, and as an heuristic tool that offers guidance and recommendations for future observations. In addition, comparison of model results
15 with observations allows us to assess model skill and leads to improved mathematical representations of biogeochemical processes.

In this study, we use results from a three-dimensional, coupled physical-biogeochemical model in combination with in situ data from sediment traps to: (1) investigate the processes controlling the export of particulate organic matter (POM) from the euphotic
20 zone and its flux to depth, and (2) see how these processes interact to produce spatial and temporal variability in export ratios and transfer efficiencies. We also compare our model results with sediment trap data and other parameterizations of particulate organic carbon (POC) flux to depth to evaluate model skill and gain further insight into the causes of error and uncertainty in POC flux estimates.
25

BGD

10, 14715–14767, 2013

Dynamics of particulate organic carbon flux in a global ocean model

I. Lima et al.

[Title Page](#)

[Abstract](#)

[Introduction](#)

[Conclusions](#)

[References](#)

[Tables](#)

[Figures](#)

[⏪](#)

[⏩](#)

[◀](#)

[▶](#)

[Back](#)

[Close](#)

[Full Screen / Esc](#)

[Printer-friendly Version](#)

[Interactive Discussion](#)

2 Methods

2.1 Model formulation

The model used in this study is the Community Climate System Model ocean Biogeochemical Elemental Cycle (CCSM-BEC) which consists of an upper-ocean ecological module (Moore et al., 2004) and a full-depth ocean biogeochemistry module (Doney et al., 2006) both embedded in a three-dimensional (3-D) global physical ocean general circulation model (Collins et al., 2006). The ecosystem module includes three phytoplankton functional groups (small pico/nano-plankton, diatoms and diazotrophs), a general adaptive zooplankton class and multi-nutrient (N, P, Si, Fe) limitation on phytoplankton growth (Doney et al., 2009a,b). Calcification by coccolithophores is parameterized as a fraction of the pico/nano-plankton production as a function of temperature and nutrients. The biogeochemistry module (Doney et al., 2006) is based on an expanded version of the Ocean Carbon Model Intercomparison Project (OCMIP) biotic model (Najjar et al., 2007) and includes full carbonate system thermodynamics, air–sea CO₂ and O₂ fluxes, nitrogen fixation and denitrification (Moore and Doney, 2007), and a dynamic iron cycle with atmospheric dust deposition, water-column scavenging and a continental sediment source. More detailed information on the ecological and biogeochemical components of the model is available in Moore et al. (2004), Doney et al. (2009a) and Doney et al. (2009b).

The treatment of sinking particulate organic material in CCSM-BEC is implicit and based on the ballast model of Armstrong et al. (2002). POC, particulate CaCO₃ and opal are produced by phytoplankton and zooplankton mortality, and grazing by zooplankton on all three phytoplankton groups (Eqs. A1–A3 in Appendix A1). The vertical flux of POM is assumed to decay exponentially with depth with a remineralization length scale (λ) that varies according to the mineral content of the organic matter. Sinking POM is assumed to have “free” and mineral associated fractions. The mineral associated portion is further divided into “soft” and “hard” fractions. The “free” fraction decays following the remineralization length scale for POC, while the mineral associated

BGD

10, 14715–14767, 2013

Dynamics of particulate organic carbon flux in a global ocean model

I. Lima et al.

Title Page

Abstract

Introduction

Conclusions

References

Tables

Figures

⏪

⏩

◀

▶

Back

Close

Full Screen / Esc

Printer-friendly Version

Interactive Discussion



Dynamics of particulate organic carbon flux in a global ocean model

I. Lima et al.

[Title Page](#)

[Abstract](#)

[Introduction](#)

[Conclusions](#)

[References](#)

[Tables](#)

[Figures](#)

[⏪](#)

[⏩](#)

[◀](#)

[▶](#)

[Back](#)

[Close](#)

[Full Screen / Esc](#)

[Printer-friendly Version](#)

[Interactive Discussion](#)



fraction decays according to the corresponding “soft” mineral dissolution length scale. The “hard” mineral associated fraction is assumed to be fast sinking and/or resistant to degradation (very long remineralization length scale) and thus to sink to the bottom of the ocean before remineralization. Ballast minerals include CaCO_3 from coccolithophores, biogenic silica (opal) from diatoms and dust from atmospheric deposition. The remineralization of POC and opal are known to be strongly influenced by temperature, so the remineralization length scales for “free” POC and opal increase with decreasing water temperature following temperature response functions (Eqs. A14, A15 in Appendix A1). The remineralization length scale for “free” POC also increases in regions of low dissolved O_2 ($< 4 \text{ mmol m}^{-3}$) where organic matter is oxidized less efficiently through denitrification. The vertical particle flux model is, in essence, equivalent to a sum of exponentials in which the different terms, representing organic matter of different mineral composition under different environmental conditions, change in space and time. The equations and parameter values for the vertical particle flux component of CCSM-BEC are presented in Appendix A1.

The version of CCSM-BEC we use has a resolution of 3.6° in longitude, $0.8\text{--}1.8^\circ$ in latitude, and 25 vertical levels (Yeager et al., 2006). The effects of mesoscale eddy transport and mixing are parameterized following Gent and McWilliams (1990). The Large et al. (1994) K-Profile Parameterization is implemented in the vertical to capture surface boundary-layer dynamics and interior diapycnal mixing. The ocean circulation model is forced with physical climate forcing from atmospheric reanalysis and satellite data products (Doney et al., 2007) and time-varying dust deposition (Mahowald et al., 2003). Analysis is performed on a 12-month climatology computed from the last 20 yr of a 840-yr run with repeat annual cycle of physical forcing and dust deposition, and fixed pre-industrial atmospheric CO_2 concentrations (280 ppmv). CCSM-BEC shows good skill in reproducing observed spatial distributions as well as seasonal and interannual variability patterns of sea surface temperature, mixed layer depth, surface chlorophyll and nutrients, and net primary production (Doney et al., 2007, 2009b).

2.2 Model analysis

We investigate the dynamics of vertical POC flux in CCSM-BEC by fitting the model results to a relatively simple 3-parameter exponential model of POC flux to depth and looking at the distribution and range of the fit parameter values, and their relationship to environmental and biogeochemical factors. The idea is to synthesise the complexity of CCSM-BEC's particle flux model into a smaller, yet representative, set of parameters that can be more easily studied and understood. The exponential model of POC flux (F) at depth (z) is defined as:

$$F(z) = f \text{NPP} \left(\alpha e^{-\frac{1}{\lambda}(z-z_0)} + (1 - \alpha) \right) \quad (1)$$

where f is the fraction of vertically integrated net primary production (NPP) that is exported (export ratio), α is the labile fraction of POC, λ is the remineralization length scale, and z_0 is the export depth. The derivation of Eq. (1) is presented in Appendix A2.

To simplify analyses and computations, annual and seasonal (January–March, April–June, July–September, October–December) means of net primary production (NPP), POC production, and biomineral (CaCO_3 and opal), dust and POC vertical fluxes are computed from the 12-month climatology of model results. Export depth (z_0) fields are computed from the annual and seasonal means as the depth where POC production is equal to 1 % of maximum POC production in the water column. The parameters α , λ and f are then estimated by fitting Eq. (1) through a non-linear least squares technique to the annual and seasonal means of NPP and POC flux profiles at each CCSM-BEC grid point. Grid cells with water columns shallower than 900 m and/or with ice coverage greater than 10% are excluded from the analysis. The Arctic ocean region is also excluded from the analysis, due to the lack of observations to evaluate model skill in the region (see Sect. 2.3), and generally poor fits due to unrealistic model POC flux profiles, particularly under the ice in winter.

The range and distribution of α , λ and f values represent variations in organic matter composition, transfer efficiency and export ratios, and reflect the flexibility and range of

behavior of CCSM-BEC's particle flux model. Examination of the relationship between α , λ and f values and environmental and biogeochemical factors gives us insight into the processes driving the export of POC from the euphotic zone and its flux to the deep, and how these processes interact to produce spatial and temporal variability in export ratios and transfer efficiencies.

In addition to the exponential model parameters, we also examine direct CCSM-BEC estimates of POC flux, export ratios and transfer efficiencies. CCSM-BEC export ratio is computed as the annual POC flux at z_0 (export flux) divided by the annual vertically integrated NPP. Transfer efficiency is computed as the ratio of annual POC flux at 2000 m to the annual POC flux at z_0 . We chose 2000 m as it is a commonly used reference depth for computing transfer efficiency (Henson et al., 2011, 2012b) and because particulate fluxes tend to not vary significantly below this depth (François et al., 2002; Honjo et al., 2008).

2.3 Model evaluation

We evaluate CCSM-BEC's skill by comparing model POC fluxes with *in situ* data from sediment traps. Here we use annual mean POC fluxes at 254 locations (Fig. 1), computed from a climatological year compiled by Lutz et al. (2007) using 25 years of observations from sediment traps. For the comparison, the CCSM-BEC mean annual POC flux is computed from the 12-month model climatology with POC flux values extracted at the locations and depths of the sediment traps. Model and observations are compared globally and for each individual region of the model domain (Fig. 1).

We also compare CCSM-BEC's skill with that of other parameterizations of POC flux to depth to gain insight into the sources of bias, error and uncertainty in POC flux estimates. The empirical model of Lutz et al. (2007) and the exponential model (Eq. 1) presented in Sect. 2.2 are evaluated against the same sediment trap data from Lutz et al. (2007). The Lutz model estimates the annual mean POC flux at depth from annual mean NPP using an exponential relationship with parameters that vary spatially as functions of the seasonal amplitude in NPP (Lutz et al., 2007). The authors' assumption

BGD

10, 14715–14767, 2013

Dynamics of particulate organic carbon flux in a global ocean model

I. Lima et al.

Title Page

Abstract

Introduction

Conclusions

References

Tables

Figures

⏪

⏩

◀

▶

Back

Close

Full Screen / Esc

Printer-friendly Version

Interactive Discussion



Dynamics of particulate organic carbon flux in a global ocean model

I. Lima et al.

Title Page

Abstract

Introduction

Conclusions

References

Tables

Figures

⏪

⏩

◀

▶

Back

Close

Full Screen / Esc

Printer-friendly Version

Interactive Discussion

is that the fraction and biodegradability of exported production are mainly influenced by ecosystem structure, which is related to the seasonal amplitude in NPP. In stable environments, primary production is mostly regenerated so a smaller fraction of NPP is exported and the exported material is more refractory, while in seasonal environments, production exceeds consumption and recycling so a larger fraction of NPP is exported in a more labile state. POC flux estimates are computed at the locations and depths of the sediment traps using the Lutz model and CCSM-BEC and satellite derived NPP extracted at the sediment trap locations. Satellite NPP is computed from a 1×1 degree monthly climatology of surface chlorophyll from SeaWiFS using the VGPM model of Behrenfeld and Falkowski (1997). To investigate the effect of factors associated with the seasonal amplitude in NPP on POC flux estimates, we compute POC flux at the locations and depths of the sediment traps using a “null” version of the Lutz model, in which the parameters are set to their spatial means and held constant for all locations.

POC flux estimates are also obtained using the exponential model (Eq. 1), fitted to the sediment trap measurements and NPP data, to compute POC flux at the locations and depths of the sediment traps. We fit Eq. (1) to all 254 POC flux observations combined, using annual mean NPP values from both satellite and CCSM-BEC extracted at the sediment trap locations. This results in two sets of “global” parameters α , λ and f , one for each NPP data set (satellite and CCSM-BEC), that are used to compute POC flux at the sediment trap locations. To examine the effect of regional variations in organic matter composition, remineralization length scale and export ratios on POC flux estimates, we fit Eq. (1) to sediment trap and NPP data grouped by model domain region (Fig. 1). This is also done using NPP from both satellite and CCSM-BEC. The POC flux is then computed at the sediment trap locations using regionally varying α , λ and f values and their corresponding NPP data set (satellite and CCSM-BEC). In the regions where the fit is poor or where there are no observations, α , λ and f are set to the “global” values computed in the previous step. The export depth (z_0) is set to the CCSM-BEC global average (110.4 m, Fig. 2b) in all exponential model fits. In

ographical patterns to the particle export (Fig. 2c, d), with values ranging from less than $0.2 \text{ gCm}^{-2} \text{ yr}^{-1}$ in the oligotrophic gyres to greater than $2 \text{ gCm}^{-2} \text{ yr}^{-1}$ in the equatorial Pacific, Arabian Sea and the subpolar frontal region off the southeast coast of South America (Fig. 2d). The globally integrated total POC flux at 2000 m is 0.21 PgCyr^{-1} .

Export ratio is high ($> 20\%$) in upwelling and high latitude regions, where production is high and export depths are shallow, and low ($< 5\%$) in the center of oligotrophic gyres, where NPP is very low and export depths are deep (Fig. 2a, b, e). Areas of moderate production and deep export depths in the Northern Southern Ocean and parts of the North Atlantic have export ratios of the order of 10% (Fig. 2e). The global area-weighted mean export ratio is 12.9% . Transfer efficiency and export ratio have generally opposing spatial distributions, except for the upwelling region in the equatorial Pacific and west coast of South America, where both are higher than the global mean. Transfer efficiency is high ($> 7\%$) in the center of oligotrophic gyres, reaching up to 40% in center of the North Atlantic gyre, and low ($< 5\%$) in productive high latitude regions and over most of the subtropical western Pacific (Fig. 2e, f). The global area-weighted mean transfer efficiency is 5.5% .

3.2 Exponential model

The least-squares fit of the exponential model (Eq. 1) to CCSM-BEC annual and seasonal means of vertical POC flux and NPP is very good. Linear regressions of “predicted” (exponential model) against “observed” (CCSM-BEC) POC flux at export depth (z_0), 500, 1000 and 2000 m produce slopes and correlation coefficients very close to 1 (Table 1). We are thus confident that the exponential model accurately represents the range of behavior of CCSM-BEC’s vertical particle flux model.

The spatial distribution of the parameters α , λ and f and their standard errors, obtained from fitting Eq. (1) to CCSM-BEC annual mean POC flux profiles and NPP is shown in Fig. 3. Labile fraction of POC (α) is above 90% over most of the ocean, except in high dust deposition regions (Arabian Sea and the North Atlantic subtropical gyre) where it reaches values below 40% (Fig. 3a). Labile fraction and transfer effi-

BGD

10, 14715–14767, 2013

Dynamics of particulate organic carbon flux in a global ocean model

I. Lima et al.

Title Page

Abstract

Introduction

Conclusions

References

Tables

Figures

⏪

⏩

◀

▶

Back

Close

Full Screen / Esc

Printer-friendly Version

Interactive Discussion



Dynamics of particulate organic carbon flux in a global ocean model

I. Lima et al.

[Title Page](#)

[Abstract](#)

[Introduction](#)

[Conclusions](#)

[References](#)

[Tables](#)

[Figures](#)

[⏪](#)

[⏩](#)

[◀](#)

[▶](#)

[Back](#)

[Close](#)

[Full Screen / Esc](#)

[Printer-friendly Version](#)

[Interactive Discussion](#)

ciency have spatially opposing patterns (Figs. 2f, 3a). Regions with lower labile fraction ($80\% < \alpha < 95\%$) in the subtropical parts of the South Atlantic, North and South Pacific, East Equatorial Pacific, and along the subpolar fronts in the South Pacific and South Indian correspond to areas of higher transfer efficiency (Fig. 2f), and regions of higher labile fraction ($\alpha > 95\%$) in the North Atlantic and Pacific and just south of the Equatorial Pacific have low transfer efficiency. The POC remineralization length scale (λ) generally increases with latitude, most likely due to temperature effects (see Sect. 2.1). λ ranges from ≈ 150 m in the tropics and subtropics to greater than 200 m at high latitudes regions (Fig. 3c). The highest values (> 250 m), however, occur in the upwelling region off the west coast of the Americas, in the Northern Indian Ocean and in a small region in the North Atlantic subtropical gyre. The lower labile fraction ($< 50\%$) and higher remineralization length scale (> 250 m) in the subtropical North Atlantic are indicative of a higher proportion of POC reaching the deep, and thus high transfer efficiency as shown in Fig. 2f. The distribution of export ratio (f) in the exponential model (Fig. 3e) is virtually identical to that from CCSM-BEC (Fig. 2e), highlighting the good fit of the exponential model.

The seasonal cycles of α , λ and f for each of the model domain regions (Fig. 1) are shown in Fig. 4a–c. Labile fraction of POC (α) remains relatively constant and above 90% in most regions (Fig. 4a). In the North Subtropical Atlantic, α is significantly lower ranging from 85% in winter to less than 75% in the summer months. In the North Indian Ocean and North and South Southern Ocean, α also reaches a minimum in summer and winter, respectively. In the North Atlantic, α is close to 95% for most of the year but drops below 90% in winter. The seasonal decrease in the POC labile fraction in these four regions is directly related to the increase in the fraction of dust in the particulate sinking detritus (Fig. 4g). In the North Subtropical Atlantic, North Atlantic and South Southern Ocean, atmospheric dust deposition is relatively constant in time, so the minima in α occur when NPP is at its lowest value (winter in the South Southern Ocean and North Atlantic and summer in the North Subtropical Atlantic, Fig. 4f). In

the North Indian Ocean, the decline in POC labile fraction in summer is smaller and is associated with a marked increase in atmospheric dust deposition (not shown).

The decreases in POC labile fraction in the North Atlantic in winter and the North Subtropical Atlantic in the summer are accompanied by a significant increase in the POC remineralization length scale (λ), denoting seasonal variations in transfer efficiency in these regions (Fig. 4a, b). The small increase in λ in the Northern Southern Ocean in winter can be attributed to lower temperatures and higher fraction of CaCO_3 in sinking particulate material (Fig. 4d,i). The increase in the ratio of CaCO_3 to POC flux in the Northern Southern Ocean in winter is due to a decrease in the export of POC relative to CaCO_3 , rather than an increase in CaCO_3 flux. On a regional scale, export ratio (f) is generally proportional to the ratio of primary production by diatoms to total primary production (Fig. 4c,e). Regions with high $\text{NPP}_{\text{diat}}/\text{NPP}_{\text{tot}}$ have high f and vice-versa. This broad spatial pattern is modulated by seasonal variations at high latitude regions (South Southern Ocean, North Southern Ocean, North Atlantic and North Pacific) where export ratios follow the annual cycle in NPP (Fig. 4c). In the South Southern Ocean, NPP and, consequently, export ratios are very low in austral winter due to severe light limitation despite the higher $\text{NPP}_{\text{diat}}/\text{NPP}_{\text{tot}}$ (Fig. 4e) caused by a decrease in the relative abundance of picophytoplankton due to their higher light requirements (lower maximum Chl : N ratio).

The magnitude of the standard error of the estimates of α , λ and f is inversely proportional to the goodness of fit of the exponential model. Therefore, regions characterized by high standard errors, such as the North Subtropical Atlantic, the North Indian Ocean and the west coast of the Americas, denote areas where the fit of the exponential is not as good (Fig. 3b, d, f). Globally, the coefficients of variation for all three parameters are quite low ($< 5\%$) and given their confidence intervals at each grid point, the spatial variations in α , λ and f shown in Fig. 3a, c, e are statistically significant. Nevertheless, analysis of the causes of the poorer fits can inform us about the factors or processes that control the POC flux in those regions and contribute to the spatial variation in α , λ and f . Fig. 5a–c shows individual POC flux profiles from CCSM-BEC and the fitted ex-

Dynamics of particulate organic carbon flux in a global ocean model

I. Lima et al.

Title Page

Abstract

Introduction

Conclusions

References

Tables

Figures

⏪

⏩

◀

▶

Back

Close

Full Screen / Esc

Printer-friendly Version

Interactive Discussion

ponential model at the locations marked in Fig. 3. The profiles are located in regions of high standard errors for all three parameters and the misfits between the exponential model and CCSM-BEC are noticeable. In the North Subtropical Atlantic (Fig. 5a), the low (mostly regenerated) NPP (Fig. 2b) and the high proportion of dust ($> 70\%$) in the particulate sinking material (Fig. 5e) result in a combination of low export ($f < 5\%$) and slow decay ($\alpha < 40\%$, $\lambda > 250$ m) that the exponential model is unable to fit well. On the west coast of South America and Africa and in the Arabian Sea region (Fig. 5b–d), the misfits are caused by the lengthening of the POC remineralization length scale between 300 and 700 m, due to low dissolved O_2 concentrations ($O_2 < 4 \text{ mmol m}^{-3}$, Fig. 5f). In CCSM-BEC, the remineralization length scale for POC is doubled in regions where organic matter is oxidised through denitrification (see Table 7 in Appendix A1). The higher λ (> 250 m) regions on the west coast of Africa and the Americas and in the North Indian Ocean (Fig. 3c) are thus directly associated with oxygen minimum zones (OMZs) in CCSM-BEC.

The wide range of variation in α , λ and f (Figs. 3 and 6) highlights the flexibility of CCSM-BEC's vertical particle flux model and its ability to simulate widely different POC flux regimes. Globally, export ratios (f) vary by an order of magnitude (3–35%) and POC remineralization length scales (λ) vary by a factor of two (150–330 m). The largest variations in labile fraction ($40\% < \alpha < 95\%$) are confined to the North Subtropical Atlantic and North Indian regions and are driven by an increase in the dust:POC ratio of exported material (Fig. 6j), caused by elevated atmospheric dust deposition. In parts of the North Atlantic and the Indian sector of the North Southern Ocean, labile fraction also drops below 90% as a result of an increase in CaCO_3 :POC ratio of sinking material (Figs. 3a, 6q). In the remaining regions, there is still significant variability in the lability of sinking POC, with the refractory fraction ($1 - \alpha$) varying by a factor of four (0.02–0.08, Fig. 6a). The variation in remineralization length scale (λ) is largely controlled by water column temperature, ranging from ≈ 200 m in colder high latitude regions to a minimum of ≈ 150 m in the warmest areas of the North Subtropical Pacific and West Equatorial Pacific (Fig. 6b). This is expected as temperature depen-

BGD

10, 14715–14767, 2013

Dynamics of particulate organic carbon flux in a global ocean model

I. Lima et al.

Title Page

Abstract

Introduction

Conclusions

References

Tables

Figures



Back

Close

Full Screen / Esc

Printer-friendly Version

Interactive Discussion

Dynamics of particulate organic carbon flux in a global ocean model

I. Lima et al.

[Title Page](#)

[Abstract](#)

[Introduction](#)

[Conclusions](#)

[References](#)

[Tables](#)

[Figures](#)

[⏪](#)

[⏩](#)

[◀](#)

[▶](#)

[Back](#)

[Close](#)

[Full Screen / Esc](#)

[Printer-friendly Version](#)

[Interactive Discussion](#)

dence of the POC remineralization length scale is built in the CCSM-BEC model. The large λ values (> 250 m) at high SSTs (Fig. 6b) are associated with the OMZ regions along the west coast of Africa and the Americas and the North Indian Ocean. In the North Subtropical Atlantic, λ increases with the dust content in the exported material (Fig. 6k) and the highest λ values (> 200 m) are associated with areas of low productivity and elevated dust deposition (Fig. 2b and 3c). The combination of low labile fraction ($\alpha < 50\%$) and high remineralization length scale ($\lambda > 200$ m) in the North Subtropical Atlantic, caused by high dust : POC ratios in sinking detritus, produces the highest transfer efficiencies in CCSM-BEC (Fig. 2f).

In CCSM-BEC, variability in export ratio is primarily driven by ecosystem structure (diatom relative abundance) and water column temperature (Fig. 6d,h, Table 2). This is expected as CCSM-BEC is parameterized so that a larger fraction of zooplankton grazing is routed to POC when zooplankton feed on diatoms, and the POC remineralization length scale decreases with increasing temperature (see Appendix A1). Multivariate linear regression analysis (Table 2) shows that, despite the apparent correlation between export ratios and opal and dust export (Fig. 6p,l), opal and dust content of exported material do not affect the export ratio in CCSM-BEC. The negative regression coefficients between CaCO_3 content of exported material and export ratio evidently reflect the dominance of diatoms in regions of high export ratio, and not a “negative” ballast effect by CaCO_3 (Table 2). Comparison of Fig. 6p and Table 2 also shows that the apparent correlation between export ratio and the opal : POC ratio in the export flux ($r = 0.56$, Fig. 6p) is the result of diatom dominance in regions of high export ratios, and not evidence of a ballasting effect by opal.

3.3 Deep fluxes and transfer efficiency in CCSM-BEC

To look at the effects of ecosystem structure and composition of exported material on deep POC fluxes and transfer efficiency in CCSM-BEC, we examine the relationship between POC flux at 2000 m ($F_{\text{POC}}^{2000\text{m}}$) and transfer efficiency ($F_{\text{POC}}^{2000\text{m}}/F_{\text{POC}}^{z_0}$) with

terial becomes the most influential factor, explaining close to 40 % of the variation in transfer efficiency, followed closely by opal : POC.

The results from the regression analyses show that the spatial variation in deep POC flux and transfer efficiency in CCSM-BEC is explained by changes in mineral ballast export and their ratios to POC export, respectively. However, while the absolute flux is strongly influenced by opal export, transfer efficiency is mostly a function of dust and CaCO_3 content of exported material. The reason for the weaker opal control on transfer efficiency is that opal flux (diatom relative abundance) is well correlated with NPP (and absolute fluxes) but the ballasting effect by opal is much weaker due to its shorter remineralization length scale and strong temperature dependence. In addition, opal rich regions are generally characterized by strong seasonality in NPP (Fig. 8b) and thus high variability in transfer efficiency, while CaCO_3 and dust rich areas tend to be more stable, with lower NPP and higher mineral : POC ratios (Fig. 8c), and the remineralization length scales for dust and CaCO_3 are significantly longer than that for opal (Table 7 in Appendix A1). Therefore, although opal export explains most of the variation in absolute POC fluxes at depth, CaCO_3 and dust are better predictors for transfer efficiency. In CCSM-BEC, ecosystem structure ($\frac{\text{NPP}_{\text{diat}}}{\text{NPP}_{\text{tot}}}$) does not have a significant influence on transfer efficiency. Nevertheless, the negative regression coefficients for $\frac{\text{NPP}_{\text{diat}}}{\text{NPP}_{\text{tot}}}$ in both regression analyses (Table 4) indicate that, in CCSM-BEC, transfer efficiency is inversely correlated with the relative contribution of diatoms to total NPP. This is consistent with the generally opposing spatial patterns of transfer efficiency and export ratio seen in Fig. 2, as ecosystem structure is the primary factor driving the variability in export ratio (Sect. 3.2).

3.4 Comparison with observations

Overall, CCSM-BEC does a reasonably good job estimating the observed annual mean POC fluxes at the locations and depths of the sediment traps in the Lutz data set. A type II linear regression of \log_{10} -transformed POC flux estimates from CCSM-BEC against

BGD

10, 14715–14767, 2013

Dynamics of particulate organic carbon flux in a global ocean model

I. Lima et al.

[Title Page](#)

[Abstract](#)

[Introduction](#)

[Conclusions](#)

[References](#)

[Tables](#)

[Figures](#)

[⏪](#)

[⏩](#)

[◀](#)

[▶](#)

[Back](#)

[Close](#)

[Full Screen / Esc](#)

[Printer-friendly Version](#)

[Interactive Discussion](#)



**Dynamics of
particulate organic
carbon flux in a
global ocean model**I. Lima et al.

[Title Page](#)[Abstract](#)[Introduction](#)[Conclusions](#)[References](#)[Tables](#)[Figures](#)[Back](#)[Close](#)[Full Screen / Esc](#)[Printer-friendly Version](#)[Interactive Discussion](#)

\log_{10} -transformed observations results in a correlation coefficient of 0.65 and a slope of 0.91 (Fig. 9a). However, the agreement between model and observations can vary significantly by region. CCSM-BEC estimates are consistent with observations in most regions (Fig. 9b, g–l), with correlations ranging from 0.81 (North Subtropical Atlantic) to 0.56 (North Pacific). In the North Subtropical Pacific (Fig. 9g) and North Subtropical Atlantic (Fig. 9k), CCSM-BEC tends to underestimate the POC flux at the shallower traps, and in the North Pacific (Fig. 9h) CCSM-BEC consistently underestimates the sediment trap fluxes at all depths. In the South Subtropical Pacific and West Equatorial Pacific (Fig. 9d, e), CCSM-BEC and observations are uncorrelated ($r = -0.08$) and negatively correlated ($r = -0.25$), respectively. This is due to the combination of a low number of observations in these regions and errors and uncertainties in the model and sediment trap estimates. Model and observational errors, which tend to cancel each other out in large samples, have a bigger impact on correlations and regression slopes when sample size is small. CCSM-BEC also significantly underestimates the flux at four of the nine sediment traps in the West Equatorial Pacific resulting in a negative correlation with observations. In the East Equatorial Pacific (Fig. 9f), observations vary within a narrow range ($0.2\text{--}0.5\text{ mmol m}^{-2}\text{ d}^{-1}$), and thus uncertainties in the model and sediment trap estimates have a bigger relative impact resulting in a large scatter around the regression line and low correlation ($r = 0.23$). In the Northern Southern Ocean, the trend is correct ($b \approx 1$) but the overestimation and underestimation of the fluxes at shallow and deep traps, respectively, results in a wide scatter and low correlation ($r = 0.30$).

Figure 10 shows the estimated annual mean POC fluxes at sediment trap locations and depths from eight different parameterizations of POC flux to depth (including CCSM-BEC) plotted against observations from the Lutz data set. With some variation, all parameterizations show reasonably good skill in reproducing the annual mean POC fluxes estimated from sediment traps. Type II regression slopes from the \log_{10} -transformed fluxes vary between 0.71 and 0.97 and correlation coefficients range from 0.5 to 0.72. In the CCSM-BEC and Lutz models, different regional errors and biases

Dynamics of particulate organic carbon flux in a global ocean model

I. Lima et al.

[Title Page](#)

[Abstract](#)

[Introduction](#)

[Conclusions](#)

[References](#)

[Tables](#)

[Figures](#)

[⏪](#)

[⏩](#)

[◀](#)

[▶](#)

[Back](#)

[Close](#)

[Full Screen / Esc](#)

[Printer-friendly Version](#)

[Interactive Discussion](#)



compensate for each other resulting in similar overall skill for both models ($r \approx 0.65$, $m > 0.9$). The Lutz model overestimates the POC flux in the North Atlantic and underestimates it in the East Equatorial Pacific and in many locations in the North Indian Ocean, while CCSM-BEC underestimates the POC flux in the North Subtropical Atlantic and North Pacific and overestimates it in the East Equatorial Pacific and several locations in the North and South Southern Ocean. The negligible difference in skill between the Lutz and the Lutz “null” models (Fig. 10b, c) suggests that the seasonal amplitude in NPP has little effect on model skill or that it is not a good proxy for differences in ecosystem structure. Another possible explanation is that the magnitude of NPP (annual mean) already contains information on ecosystem structure. Diatoms tend to be dominant in productive (high annual NPP) regions while nano-picophytoplankton are dominant in oligotrophic areas (low annual NPP). Given the correlation between NPP and phytoplankton community structure, the added effect of variations in the seasonal amplitude in NPP may not be significant compared to the relatively large uncertainties in sediment trap estimates. The Lutz model shows lower skill ($r = 0.5$, $b < 0.9$) when using NPP from CCSM-BEC. This is in part expected as the equations used to compute the parameters in Lutz’s exponential relation were obtained from fits to the seasonal variation index (SVI = temporal coefficient of variation of 12-month climatology, Lutz et al. (2007)) of SeaWiFS NPP. Therefore, errors and biases in CCSM-BEC NPP can have an effect. CCSM-BEC significantly underestimates NPP in parts of the North Pacific and in the North Subtropical Atlantic along the upwelling region off the west coast of Africa (Doney et al., 2009b), where a number of the sediment traps are located (Fig. 1). As a result, the Lutz model with CCSM-BEC NPP underestimates the POC flux in a large number of locations in these regions. The SVI for CCSM-BEC NPP is also significantly higher than that for SeaWiFS NPP at many trap locations in the North Atlantic and North and South Southern Ocean. This leads to significantly higher export ratios and a decrease in the remineralization length scale in the Lutz model, and a net increase in the POC flux to depth at these locations compared to estimates using SeaWiFS NPP. The underestimation of POC fluxes at sites in the North Pacific and

North Subtropical Atlantic, and the overestimation of POC fluxes at locations in North Atlantic and Southern Ocean result in a wider scatter and lower correlation for the Lutz model using CCSM-BEC NPP (Fig. 10d).

As expected, the exponential model (Eq. 1) with regionally varying parameter values (α , λ , f) (Fig. 10g,h) shows better skill (higher correlation, slope closer to 1) than the exponential model with spatially constant parameters (Fig. 10e, f). However, due to its simpler formulation, the exponential model does not provide the flexibility necessary to reproduce the observed variation in POC flux profiles, and all four parameterizations of the exponential model (“global”, “regional”, satellite and CCSM-BEC NPP) tend to underestimate shallow fluxes and overestimate deep fluxes (Fig. 10e–h), when compared to CCSM-BEC or the Lutz model (Fig. 10a–d). As in the case of the Lutz model, errors and biases in CCSM-BEC NPP lead to a wider scatter and lower correlations between model estimates and observations in both the “global” and “regional” exponential models (Fig. 10e–h).

The magnitude of export ratios (f) in CCSM-BEC and their relationship with sea surface temperature (SST) are consistent with those reported in Henson et al. (2011) (Fig. 6d). Export ratios are inversely correlated with SST ($r = -0.6$), ranging from 0.07–0.3 in temperate and subpolar regions to 0.03–0.2 in warm subtropical and equatorial waters. The wide scatter in the North and South Southern Ocean, subtropical Pacific and Atlantic (north and south) and Indian Ocean (north and south) results from the fact that export ratios in CCSM-BEC are mainly a function of the relative abundance of diatoms, which varies significantly in these regions (Fig. 6h). The subtropical Pacific and Atlantic and the Indian Ocean include productive upwelling areas where diatoms dominate and oligotrophic areas where diatoms are virtually absent. The Henson et al. (2011) export ratio estimates, however, include values higher than 0.35 in the Southern Ocean and lower than 0.03 in the subtropics, and the export ratio estimates from CCSM-BEC are generally higher in the subtropics and lower in higher latitudes than those from the Henson et al. (2011) exponential relationship (Fig. 6d). Except for re-

Dynamics of particulate organic carbon flux in a global ocean model

I. Lima et al.

[Title Page](#)

[Abstract](#)

[Introduction](#)

[Conclusions](#)

[References](#)

[Tables](#)

[Figures](#)



[Back](#)

[Close](#)

[Full Screen / Esc](#)

[Printer-friendly Version](#)

[Interactive Discussion](#)



gions with SST > 25°C, CCSM-BEC estimates of export ratios are significantly lower than those from the linear f vs SST relationship of Laws et al. (2000).

4 Discussion

Estimates of global POC export range from 4 PgCyr⁻¹ (Henson et al., 2011) to ≈ 21 PgCyr⁻¹ (Laws et al., 2000), with values clustering around either 5 PgCyr⁻¹ (Moore et al., 2004; Lutz et al., 2007; Honjo et al., 2008; Henson et al., 2011, 2012b) or 10 PgCyr⁻¹ (Laws et al., 2000; Schlitzer, 2004; Gehlen et al., 2006; Dunne et al., 2007) (Table 5). Similarly, global mean export ratio computations vary around ≈ 10% and ≈ 20% (Table 5). Part of the variation in global export estimates in Table 5 is a result of different definitions of export depth. Most studies define export depth as the maximum of either the euphotic zone or mixed layer depths. Shallower export depths result in higher export estimates and vice-versa. CCSM-BEC's estimates of global POC export (6.04 PgCyr⁻¹) and export ratio (12.9%) are consistent with those in the first group. Different experiments with CCSM-BEC using different types of forcing produce global POC exports and export ratios in the range 5.5–6.3 PgCyr⁻¹ and 11.5–12.9%, respectively, which are close to that obtained by Moore et al. (2004) using an earlier version of CCSM-BEC. Global POC export estimates from the parameterizations shown in Fig. 10 vary between 2.23 and 7.73 PgCyr⁻¹ ($3.8\% \leq f \leq 16.9\%$) but most values are in the 4–5.5 PgCyr⁻¹ ($6.7\% \leq f \leq 10.8\%$) range (Table 6), also making them consistent with CCSM-BEC and other studies in the first group. The ¹⁵N isotope based global export estimate of Laws et al. (2000) (11.1 PgCyr⁻¹, 21%) includes both DOC and POC and is most likely an overestimation as it does not account for potentially large biases due to significant levels of nitrification in the upper ocean (Yool et al., 2007).

The studies shown in Table 5 have their own sources of bias and uncertainty, and many are based on algorithms derived from or calibrated with sparse *in situ* data. It is clear from the range of estimates that *in situ* observations do not provide the necessary resolution to evaluate export estimates by the different methods or constrain

BGD

10, 14715–14767, 2013

Dynamics of particulate organic carbon flux in a global ocean model

I. Lima et al.

Title Page

Abstract

Introduction

Conclusions

References

Tables

Figures

⏪

⏩

◀

▶

Back

Close

Full Screen / Esc

Printer-friendly Version

Interactive Discussion

Dynamics of particulate organic carbon flux in a global ocean model

I. Lima et al.

[Title Page](#)

[Abstract](#)

[Introduction](#)

[Conclusions](#)

[References](#)

[Tables](#)

[Figures](#)

[⏪](#)

[⏩](#)

[◀](#)

[▶](#)

[Back](#)

[Close](#)

[Full Screen / Esc](#)

[Printer-friendly Version](#)

[Interactive Discussion](#)

particle flux parameterizations, which can lead to significant differences in global estimates (Gehlen et al. (2006), Table 5). Extrapolating point measurements (Fig. 1) to compute global means or integrals implies a fair amount of spatial and temporal homogeneity. The impact of spatial variability on estimates of global export and export ratios is evident in the comparison of the results from the “global” and “regional” exponential models in Table 6. Using satellite NPP, the export and export ratio estimates from the “regional” exponential model are more than double those of the “global” model. Compounding the problem are the relatively large uncertainties associated with sediment trap data, particularly from shallow traps (< 1000 m).

While there is some agreement regarding estimates of global export and mean export ratios, there are few independent estimates of global transfer efficiency (Table 5), defined here as the ratio of export flux to POC flux at 2000 m. The transfer efficiency obtained from the Martin et al. (1987) power law ($F = F_{z_0} \left(\frac{z}{z_0}\right)^b$) with $z_0 = 110.4$ m (CCSM-BEC global mean) and $b = -0.858$ (8.3 %) is in good agreement with the sediment trap based estimate of Honjo et al. (2008) (7.6 %). However, this is not surprising as Honjo et al. (2008) used the Martin curve (with $b = -0.858$) to normalize the POC fluxes to 2000 m and compute transfer efficiencies. Using the Lutz et al. (2007) model in combination with an export algorithm calibrated with sediment trap data and satellite derived NPP, Henson et al. (2012b) estimates mean global transfer efficiency as 19 % (Table 5). The global area-weighted mean transfer efficiency in CCSM-BEC (5.5 %) is significantly lower than those from Henson et al. (2012b), and the parameterizations shown in Fig. 10, which range between 22.8–38.3 % (Table 6). The difference can be attributed to differences in formulation as well as complexity between CCSM-BEC’s vertical particle flux parameterization and the other models. As we saw in Sect. 3.2, CCSM-BEC’s complexity translates into a wide range of variation in labile fraction, remineralization length scales and export ratios (Figs. 3a, c, e and 6) that allows it to simulate widely different POC flux regimes. In contrast, the simpler parameterizations in the “regional” exponential and Lutz models have a more uniform parameter space, resulting in more spatially homogeneous POC flux profiles and transfer efficiency fields

Dynamics of particulate organic carbon flux in a global ocean model

I. Lima et al.

[Title Page](#)

[Abstract](#)

[Introduction](#)

[Conclusions](#)

[References](#)

[Tables](#)

[Figures](#)

[⏪](#)

[⏩](#)

[◀](#)

[▶](#)

[Back](#)

[Close](#)

[Full Screen / Esc](#)

[Printer-friendly Version](#)

[Interactive Discussion](#)



and thus significantly different global estimates. The four parameterizations of the exponential model (“global”, “regional”, satellite and CCSM-BEC NPP) also tend to underestimate shallow fluxes and overestimate deep fluxes (Fig. 10b–h), compared to CCSM-BEC (Sect. 3.4). These biases lead to an overestimation of transfer efficiency that is consistent with the results shown in Table 6. The difference in transfer efficiency between CCSM-BEC and the simpler models also highlights the effect of spatial variability on global budgets. As the number and range of estimates in Table 5 shows, transfer efficiency in the ocean remains largely unconstrained despite significant efforts by observational scientists.

Although CCSM-BEC’s particle flux model is fundamentally based on the ballast hypothesis (Armstrong et al., 2002), the vertical flux of POC to depth in CCSM-BEC is the result of the interaction of mineral ballast effects, environmental and biogeochemical factors, and ecosystem dynamics. The temperature dependence of the POC remineralization length scale is modulated by denitrification under low O_2 concentrations and lithogenic (dust) fluxes. Export ratio is governed by diatom relative abundance while degradability of exported material is mainly influenced by dust and $CaCO_3$ content. Transfer efficiency in the model is primarily controlled by dust and $CaCO_3$, and to a lesser extent, opal content of the exported material. The relative importance of the different ballast minerals in controlling transfer efficiency is the result of their respective remineralization length scales and their local supply or production in relation to local NPP. Thus, oligotrophic regions with high calcification and/or dust deposition (longer length scale) will have higher transfer efficiency than productive, opal rich (shorter length scale) regions. Ecosystem structure does not affect transfer efficiency directly but its indirect effect is evident in the inverse correlation between diatom relative abundance and transfer efficiency (Table 4) and the generally opposing spatial patterns of export ratio and transfer efficiency (Fig. 2e, f). A similar relationship between ecosystem structure (diatom relative abundance), export ratio and transfer efficiency was found by François et al. (2002) and Henson et al. (2012b). François et al. (2002), analyzing data from deep (> 2000 m) sediment traps, found that transfer efficiency is primarily

Dynamics of particulate organic carbon flux in a global ocean model

I. Lima et al.

[Title Page](#)

[Abstract](#)

[Introduction](#)

[Conclusions](#)

[References](#)

[Tables](#)

[Figures](#)



[Back](#)

[Close](#)

[Full Screen / Esc](#)

[Printer-friendly Version](#)

[Interactive Discussion](#)



driven by the CaCO_3 content of sinking particles and attributed the absence of a ballasting effect by opal to an ecosystem or “packaging” effect that changes the lability of sinking particles and counteracts the ballasting effect of opal. Henson et al. (2012b), on the other hand, based on satellite derived algorithms calibrated with sediment trap data, concluded that transfer efficiency is mainly driven by community structure (inversely correlated with diatom relative abundance). Comparison of our results with François et al. (2002) and Henson et al. (2012b) shows that although the three studies show similar relationships between ecosystem structure and transfer efficiency, different methodologies, assumptions and approximations can produce significantly different correlations between specific factors. In addition, many of the factors are not truly independent, mineral ballast composition is inextricably linked to community structure (see Sect. 3.2, Table 2), and an effect akin to ecosystem control of transfer efficiency can be achieved with a ballast based model. Therefore, it is difficult to differentiate between ecosystem and ballast control of transfer efficiency.

Lithogenic material is an important control of transfer efficiency in CCSM-BEC. Dunne et al. (2007), using a combination of algorithms that connect satellite estimated NPP to particulate fluxes through the water column to the sediments, also concluded that lithogenic material plays an important role in the transport of POC to the deep, particularly in low productivity areas, accounting for close to 50 % of the total POC flux to the sea floor. In the North Subtropical Atlantic, the combination of elevated dust deposition and low NPP produces high dust : POC ratios which in turn result in low labile fraction and long remineralization length scale and the highest transfer efficiencies in CCSM-BEC (Fig. 2f). Klaas and Archer (2002) also found that the magnitude of the POC flux to deep (> 3000 m) sediment traps is mainly a function of the CaCO_3 and lithogenic content of the sinking particles. François et al. (2002), analysing a different subset of the same data, concluded that lithogenic material does not have a significant effect on transfer efficiency. However, their conclusion is based on data from 68 sediment traps, of which few are located in regions of strong lithogenic influence (North Subtropical Atlantic). Our results, on the other hand, are from a model but cover a wide range of

Dynamics of particulate organic carbon flux in a global ocean model

I. Lima et al.

[Title Page](#)

[Abstract](#)

[Introduction](#)

[Conclusions](#)

[References](#)

[Tables](#)

[Figures](#)

[⏪](#)

[⏩](#)

[◀](#)

[▶](#)

[Back](#)

[Close](#)

[Full Screen / Esc](#)

[Printer-friendly Version](#)

[Interactive Discussion](#)

environments and flux regimes. The effect of dust on transfer efficiency in CCSM-BEC has a strong regional bias (North Subtropical Atlantic, North Indian Ocean) and may be overestimated to some extent. The model's lithogenic coefficients are the least well constrained and at the upper end of the estimate from Klaas and Archer (2002). In the regions of low dust input, transfer efficiency is mainly affected by CaCO_3 content of sinking material which is consistent with previous studies (François et al., 2002; Klaas and Archer, 2002; Dunne et al., 2007).

The sparseness of sediment trap data (Fig. 1) and the relatively large uncertainties associated with those observations make it difficult to constrain and evaluate POC flux to depth estimates from numerical models and satellite based parameterizations. As a result, significantly different models and parameterizations show relatively similar skills when compared with observations (Fig. 10). CCSM-BEC's skill at reproducing POC flux estimates at sediment trap locations is equal to or better than that of other parameterizations. However, using CCSM-BEC NPP in the Lutz and exponential models results in a significant decrease in correlation between model estimates and observations (Fig. 10). Errors and biases in CCSM-BEC's NPP do not necessarily translate into lower skill for CCSM-BEC because of the complexity of CCSM-BEC's vertical particle flux model. The vertical POC flux in CCSM-BEC is a function of many different factors in addition to NPP: environment, biogeochemical processes, mineral ballast and ecosystem structure. This results in a disconnect and low correlation ($r = 0.16$) between POC flux and NPP at sediment trap locations. In the simpler parameterizations of Lutz and the exponential models, POC flux is a more direct function of NPP (exponential decay of a fraction of NPP) and NPP and POC flux are more strongly correlated. Therefore, errors and biases in CCSM-BEC's NPP have a proportionally larger effect on POC flux estimates in these models.

In CCSM-BEC, transfer efficiency is mainly controlled by mineral ballast (dust and CaCO_3) through changes in labile fraction (α) and remineralization length scale (λ) of sinking POC. This effect is most pronounced in oligotrophic regions, where mineral: POC ratios are relatively high. In the North and South Subtropical Atlantic gyres,

Dynamics of particulate organic carbon flux in a global ocean model

I. Lima et al.

[Title Page](#)

[Abstract](#)

[Introduction](#)

[Conclusions](#)

[References](#)

[Tables](#)

[Figures](#)



[Back](#)

[Close](#)

[Full Screen / Esc](#)

[Printer-friendly Version](#)

[Interactive Discussion](#)



in particular, strong atmospheric dust deposition in combination with low NPP produces the highest transfer efficiencies in CCSM-BEC ($> 10\%$). However, the virtual absence of sediment trap measurements in these regions (or other oligotrophic gyres, Fig. 1) makes it difficult to evaluate these model results against observations. Model POC remineralization length scale is further modulated by temperature and O_2 concentrations. More observations in OMZ regions would be of great value in quantifying and constraining the effect of low O_2 concentrations on POC remineralization length scales. Export ratio in CCSM-BEC is mainly a function of phytoplankton community structure and temperature. The available sediment flux data, however, tend to be from sites located in productive areas (high latitude, frontal and upwelling regions or near continental margins, Fig. 1), and therefore, do not provide much contrast between ecological regimes, making it more difficult to evaluate the role of ecosystem structure on export ratios and transfer efficiency. To thoroughly evaluate and test model results and better understand the processes controlling POC flux to depth in the ocean, more observations are necessary in a wider range of ecological regimes, including oligotrophic gyres, OMZ regions and areas under strong lithogenic influence.

5 Summary and conclusions

CCSM-BEC's particle flux model is fundamentally based on the ballast hypothesis, but the vertical flux of POC to depth in CCSM-BEC is the result of the interaction of many different processes including: mineral ballast effects, environmental and biogeochemical factors, and ecosystem dynamics. The POC remineralization length scale's dependence on temperature is modulated by denitrification under low O_2 concentrations and lithogenic (dust) fluxes. Export ratios are mainly a function of diatom relative abundance and temperature while transfer efficiency is driven primarily by dust and $CaCO_3$, and to a lesser extent, opal content of the exported material. The close link between mineral ballast composition and plankton community structure results in correlations between export ratios and ballast minerals fluxes (opal and $CaCO_3$), and transfer efficiency and

diatom relative abundance that do not necessarily reflect ballast or direct ecosystem effects, respectively. This suggests that differentiating between ecosystem and ballast effects might be difficult in observations. CCSM-BEC's skill at reproducing sediment trap observations is equal to or better than that of other parameterizations. However, the sparseness and relatively large uncertainties of sediment trap data makes it difficult to accurately evaluate model skill. More POC flux observations, over a wider range of ecological regimes, are necessary to thoroughly evaluate and test model results and better understand the processes controlling POC flux to depth in the ocean.

A1 Vertical particle flux equations

Production of particulate organic carbon (POC), CaCO_3 and opal are given by:

$$\text{POC}^{\text{prod}} = \text{SP}_{\text{agg}} + G_{\text{sp}}^{\text{POC}} + \text{SP}_{\text{loss}}^{\text{POC}} + \text{Diat}_{\text{loss}}^{\text{POC}} + \text{Diat}_{\text{agg}} + G_{\text{diat}}^{\text{POC}} + G_{\text{diaz}}^{\text{POC}} + Z_{\text{loss}}^{\text{POC}} \quad (\text{A1})$$

$$P\text{CaCO}_3^{\text{prod}} = \left(\left(1 - f_{\text{graz}}^{\text{CaCO}_3, \text{remin}} \right) G_{\text{sp}} + \text{SP}_{\text{loss}} + \text{SP}_{\text{agg}} \right) Q_{\text{sp}}^{\text{CaCO}_3} \quad (\text{A2})$$

$$P\text{SiO}_3^{\text{prod}} = \left(\left(1 - f_{\text{graz}}^{\text{Si, remin}} \right) G_{\text{diat}} + \text{Diat}_{\text{agg}} + f_{\text{diat loss}}^{\text{POC}} \text{Diat}_{\text{loss}} \right) Q_{\text{diat}}^{\text{Si}} \quad (\text{A3})$$

where $Q_{\text{sp}}^{\text{CaCO}_3}$ and $Q_{\text{diat}}^{\text{Si}}$ are the $\text{CaCO}_3 : \text{C}$ and $\text{Si} : \text{C}$ ratios for small phytoplankton and diatoms, respectively, the G_X^{POC} terms represent the fraction of zooplankton grazing (G_X) on each phytoplankton group ($X = \{\text{sp}, \text{diat}, \text{diaz}\}$) that is directed to POC, the terms $X_{\text{loss}}^{\text{POC}}$ represent the fraction of linear mortality (X_{loss}) for each phytoplankton functional group ($X = \{\text{sp}, \text{diat}\}$) that is directed to POC, $Z_{\text{loss}}^{\text{POC}}$ represents the fraction of zooplankton total mortality (Z_{loss}) that is directed to POC, and the terms X_{agg} represent the quadratic mortality, or "aggregation", for each phytoplankton functional group ($X = \{\text{sp}, \text{diat}\}$). The expression for each of the terms in Eqs. (A1)–(A3) is shown below and the definitions and values for the parameters in those expressions are presented in

Table 7:

$$\begin{aligned}
 G_{sp} &= u_{\max}^{sp} T_f \left(\frac{SP_C^2}{SP_C^2 + g^2} \right) Z_C; & G_{sp}^{POC} &= G_{sp} \times \text{MAX} \\
 & & & \left(f_{\text{graz}}^{\text{CaCO}_3, \text{POC}} Q_{sp}^{\text{CaCO}_3}, \text{MIN} \left(e_{sp}^{\text{POC}} SP_C, f_{\text{graz}}^{sp, \text{POC}} \right) \right); \\
 G_{\text{diat}} &= u_{\max}^{\text{diat}} T_f \left(\frac{\text{Diat}_C^2}{\text{Diat}_C^2 + g^2} f_z^{\text{diat}} \right) Z_C; & G_{\text{diat}}^{\text{POC}} &= f_{\text{graz}}^{\text{diat}, \text{POC}} G_{\text{diat}}; \\
 G_{\text{diaz}} &= u_{\max}^{\text{diaz}} T_f \left(\frac{\text{Diaz}_C^2}{\text{Diaz}_C^2 + g^2} \right) Z_C; & G_{\text{diaz}}^{\text{POC}} &= f_{\text{graz}}^{\text{diaz}, \text{POC}} G_{\text{diaz}} \\
 SP_{\text{loss}} &= m_{sp} SP_C; & SP_{\text{loss}}^{\text{POC}} &= Q_{sp}^{\text{CaCO}_3} SP_{\text{loss}}; \\
 \text{Diat}_{\text{loss}} &= m_{\text{diat}} \text{Diat}_C; & \text{Diat}_{\text{loss}}^{\text{POC}} &= f_{\text{diat loss}}^{\text{POC}} \text{Diat}_{\text{loss}}; \\
 Z_{\text{loss}} &= T_f \left(m_z Z_C + p_z Z_C^2 \right); & Z_{\text{loss}}^{\text{POC}} &= \frac{f_{z\text{loss}}^{sp, \text{POC}} G_{sp} + f_{z\text{loss}}^{\text{diat}, \text{POC}} G_{\text{diat}} + f_{z\text{loss}}^{\text{diaz}, \text{POC}} G_{\text{diaz}}}{G_{sp} + G_{\text{diat}} + G_{\text{diaz}}} Z_{\text{loss}} \\
 SP_{\text{agg}} &= \text{MIN}(a_{sp}^{\text{max}} SP_C, p_{sp} SP_C^2); & \text{Diat}_{\text{agg}} &= \text{MIN}(a_{\text{diat}}^{\text{max}} \text{Diat}_C, p_{\text{diat}} \text{Diat}_C^2)
 \end{aligned}$$

T_f is the temperature dependency function for the ecosystem model and is defined as $T_f = q_{10}^{\frac{T-T_{\text{ref}}}{10}}$, and SP_C , Diat_C , Diaz_C and Z_C represent small phytoplankton, diatom, diazotrophs and zooplankton carbon concentrations (mmol C m^{-3}), respectively.

The fraction of “free” POC produced ($\text{free POC}^{\text{prod}}$) is given by:

$$\text{free POC}^{\text{prod}} = \text{POC}^{\text{prod}} - \omega_{PCaCO_3} \frac{M_{CaCO_3}}{M_{POC}} PCaCO_3^{\text{prod}} - \omega_{PSiO_3} \frac{M_{SiO_3}}{M_{POC}} PSiO_3^{\text{prod}} \quad (\text{A4})$$

**Dynamics of
particulate organic
carbon flux in a
global ocean model**

I. Lima et al.

Title Page

Abstract

Introduction

Conclusions

References

Tables

Figures



Back

Close

Full Screen / Esc

Printer-friendly Version

Interactive Discussion



The vertical fluxes of the “soft” and “hard” fractions of particulate CaCO_3 ($PCaCO_3$), biogenic opal ($PSiO_3$) and dust are given by:

$$\text{soft } PCaCO_3^{\text{flux}}(z) = \text{soft } PCaCO_3^{\text{flux}}_{z_0} e^{-\frac{(z-z_0)}{\lambda_{PCaCO_3}}} + \left(1 - f_{PCaCO_3}^{\text{hard}}\right) \int_{z_0}^z PCaCO_3^{\text{prod}} e^{-\frac{(z-z_0)}{\lambda_{PCaCO_3}}} dz \quad (\text{A5})$$

$$\text{hard } PCaCO_3^{\text{flux}}(z) = \text{hard } PCaCO_3^{\text{flux}}_{z_0} e^{-\frac{(z-z_0)}{\lambda_{\text{hard}}}} + f_{PCaCO_3}^{\text{hard}} \int_{z_0}^z PCaCO_3^{\text{prod}} dz \quad (\text{A6})$$

$$\text{soft } PSiO_3^{\text{flux}}(z) = \text{soft } PSiO_3^{\text{flux}}_{z_0} e^{-\frac{(z-z_0)}{\lambda_{PSiO_3}}} T_f^{SiO_3} + \left(1 - f_{PSiO_3}^{\text{hard}}\right) \int_{z_0}^z PSiO_3^{\text{prod}} e^{-\frac{(z-z_0)}{\lambda_{PSiO_3}}} T_f^{SiO_3} dz \quad (\text{A7})$$

$$\text{hard } PSiO_3^{\text{flux}}(z) = \text{hard } PSiO_3^{\text{flux}}_{z_0} e^{-\frac{(z-z_0)}{\lambda_{\text{hard}}}} + f_{PSiO_3}^{\text{hard}} \int_{z_0}^z PSiO_3^{\text{prod}} dz \quad (\text{A8})$$

$$\text{soft } \text{dust}^{\text{flux}}(z) = \left(1 - f_{\text{dust}}^{\text{hard}}\right) \left(1 - f_{\text{dust}}^{\text{bio}}\right) \text{dust}^{\text{flux}}_{z_0} e^{-\frac{(z-z_0)}{\lambda_{\text{dust}}}} \quad (\text{A9})$$

$$\text{hard } \text{dust}^{\text{flux}}(z) = f_{\text{dust}}^{\text{hard}} \left(1 - f_{\text{dust}}^{\text{bio}}\right) \text{dust}^{\text{flux}}_{z_0} e^{-\frac{(z-z_0)}{\lambda_{\text{hard}}}} \quad (\text{A10})$$

The vertical fluxes of “free”, associated and total POC at depth (z) are given by:

$$\text{free POC flux}(z) = \text{free POC flux}_{z_0} e^{-\frac{(z-z_0)}{\lambda_{\text{POC}}} T_f^{\text{POC}}} + \int_{z_0}^z \text{free POC prod} e^{-\frac{(z-z_0)}{\lambda_{\text{POC}}} T_f^{\text{POC}}} dz \quad (\text{A11})$$

$$\begin{aligned} \text{nonfree POC flux}(z) = & \omega_{\text{PCaCO}_3} \frac{M_{\text{CaCO}_3}}{M_{\text{POC}}} \left(\text{soft PCaCO}_3 \text{ flux}(z) + \text{hard PCaCO}_3 \text{ flux}(z) \right) \\ & + \omega_{\text{PSiO}_3} \frac{M_{\text{SiO}_3}}{M_{\text{POC}}} \left(\text{soft PSiO}_3 \text{ flux}(z) + \text{hard PSiO}_3 \text{ flux}(z) \right) \\ & + \omega_{\text{dust}} \frac{1}{M_{\text{POC}}} \left(\text{soft dust flux}(z) + \text{hard dust flux}(z) \right) \end{aligned} \quad (\text{A12})$$

$$\text{POC flux}(z) = \text{free POC flux}(z) + \text{nonfree POC flux}(z) \quad (\text{A13})$$

The temperature dependency functions for opal (SiO_3) and POC are defined as:

$$T_f^{\text{SiO}_3} = \text{SiO}_3 q_{10}^{\frac{T-T_{\text{ref}}}{10}} \quad (\text{A14})$$

$$T_f^{\text{POC}} = \text{POC} q_{10}^{\frac{T-T_{\text{ref}}}{10}} \quad (\text{A15})$$

Remineralization is computed from conservation:

$$\text{PCaCO}_3^{\text{remin}}(z) = \text{PCaCO}_3^{\text{prod}}(z) + \frac{d(\text{soft PCaCO}_3 \text{ flux}(z))}{dz} + \frac{d(\text{hard PCaCO}_3 \text{ flux}(z))}{dz} \quad (\text{A16})$$

$$\text{PSiO}_3^{\text{remin}}(z) = \text{PSiO}_3^{\text{prod}}(z) + \frac{d(\text{soft PSiO}_3 \text{ flux}(z))}{dz} + \frac{d(\text{hard PSiO}_3 \text{ flux}(z))}{dz} \quad (\text{A17})$$

$$\text{POC}^{\text{remin}}(z) = \text{POC}^{\text{prod}}(z) + \frac{d(\text{free POC flux}(z))}{dz} + \frac{d(\text{nonfree POC flux}(z))}{dz} \quad (\text{A18})$$

$$\text{dust}^{\text{remin}}(z) = \frac{d(\text{soft dust flux}(z))}{dz} + \frac{d(\text{hard dust flux}(z))}{dz} \quad (\text{A19})$$

BGD

10, 14715–14767, 2013

Dynamics of particulate organic carbon flux in a global ocean model

I. Lima et al.

Title Page

Abstract

Introduction

Conclusions

References

Tables

Figures

⏪

⏩

◀

▶

Back

Close

Full Screen / Esc

Printer-friendly Version

Interactive Discussion



The parameter definitions and values for Eqs. (A1)–(A19) are shown in Table 7.

A2 Exponential Model

POC flux (F) is assumed to decay exponentially with depth (z) following:

$$F(z) = F(z_0) e^{-\frac{1}{\lambda}(z-z_0)} \quad (\text{A20})$$

- 5 where $F(z_0)$ is the POC flux at export depth z_0 (export flux) and λ is the remineralization length scale. Assuming labile (α_l) and refractory (α_r) fractions Eq. (A20) becomes:

$$F(z) = F(z_0) \left(\alpha_l e^{-\frac{1}{\lambda_l}(z-z_0)} + \alpha_r e^{-\frac{1}{\lambda_r}(z-z_0)} \right) \quad (\text{A21})$$

For large λ_r values, $\frac{1}{\lambda_r} \rightarrow 0$ and Eq. (A21) becomes:

$$F(z) = F(z_0) \left(\alpha_l e^{-\frac{1}{\lambda_l}(z-z_0)} + \alpha_r \right) \quad (\text{A22})$$

- 10 From Eq. (A22) at $z = z_0$, we have that $\alpha_r = 1 - \alpha_l$. Defining export flux $F(z_0)$ as a fraction (f) of vertically integrated net primary production (NPP) and dropping the subscripts ($\alpha = \alpha_l$, $\lambda = \lambda_l$), Eq. (A22) is rewritten as:

$$F(z) = f \text{NPP} \left(\alpha e^{-\frac{1}{\lambda}(z-z_0)} + (1 - \alpha) \right) \quad (\text{A23})$$

- 15 *Acknowledgements.* We thank Michael Lutz for making available his climatology of sediment trap observations. Support for this work was provided by WHOI Ocean and Climate Change Institute and NSF grants OCE-0960880 and AGS-1048827.

References

Archer, D., Winguth, A., Lea, D., and Mahowald, N.: What caused the glacial/interglacial atmospheric $p\text{CO}_2$ cycles?, *Rev. Geophys.*, 38, 159–189, doi:10.1029/1999RG000066, 2000. 14717

Dynamics of particulate organic carbon flux in a global ocean model

I. Lima et al.

[Title Page](#)

[Abstract](#)

[Introduction](#)

[Conclusions](#)

[References](#)

[Tables](#)

[Figures](#)

[⏪](#)

[⏩](#)

[◀](#)

[▶](#)

[Back](#)

[Close](#)

[Full Screen / Esc](#)

[Printer-friendly Version](#)

[Interactive Discussion](#)

- Armstrong, R. A., Lee, C., Hedges, J. I., Honjo, S., and Wakeham, S. G.: A new, mechanistic model for organic carbon fluxes in the ocean based on the quantitative association of POC with ballast minerals, *Deep-Sea Res. Pt. II*, 49, 219–236, doi:10.1016/S0967-0645(01)00101-1, 2002. 14717, 14719, 14737
- Behrenfeld, M. J. and Falkowski, P. G.: Photosynthetic rates derived from satellite-based chlorophyll concentration, *Limnol. Oceanogr.*, 42, 1–20, <http://www.jstor.org/stable/10.2307/2838857>, 1997. 14723
- Boyd, P. W. and Trull, T. W.: Understanding the export of biogenic particles in oceanic waters: Is there consensus?, *Prog. Oceanogr.*, 72, 276–312, doi:10.1016/j.pocean.2006.10.007, 2007. 14717
- Carr, M.-E., Friedrichs, M. A., Schmeltz, M., Noguchi Aita, M., Antoine, D., Arrigo, K. R., Asanuma, I., Aumont, O., Barber, R., Behrenfeld, M., Bidigare, R., Buitenhuis, E. T., Campbell, J., Ciotti, A., Dierssen, H., Dowell, M., Dunne, J., Esaias, W., Gentili, B., Gregg, W., Groom, S., Hoepffner, N., Ishizaka, J., Kameda, T., Le Quéré, C., Lohrenz, S., Marra, J., Mélin, F., Moore, K., Morel, A., Reddy, T. E., Ryan, J., Scardi, M., Smyth, T., Turpie, K., Tilstone, G., Waters, K., and Yamanaka, Y.: A comparison of global estimates of marine primary production from ocean color, *Deep-Sea Res. Pt. II*, 53, 741–770, doi:10.1016/j.pocean.2006.10.007, 2006. 14754
- Collins, W. D., Bitz, C. M., Blackmon, M. L., Bonan, G. B., Bretherton, C. S., Carton, J. A., Chang, P., Doney, S. C., Hack, J. J., Henderson, T. B., Kiehl, J. T., Large, W. G., McKenna, D. S., Santer, B. D., and Smith, R. D.: The Community Climate System Model Version 3 (CCSM3), *J. Climate*, 19, 2122–2143, doi:10.1175/JCLI3761.1, 2006. 14719
- Doney, S. C., Lindsay, K., Fung, I., and John, J.: Natural Variability in a Stable, 1000-Yr Global Coupled Climate–Carbon Cycle Simulation, *J. Climate*, 19, 3033–3054, doi:10.1175/JCLI3783.1, 2006. 14719
- Doney, S. C., Yeager, S., Danabasoglu, G., Large, W. G., and McWilliams, J. C.: Mechanisms Governing Interannual Variability of Upper-Ocean Temperature in a Global Ocean Hindcast Simulation, *J. Phys. Oceanogr.*, 37, 1918–1938, doi:10.1175/JPO3089.1, 2007. 14720
- Doney, S. C., Lima, I., Feely, R. A., Glover, D. M., Lindsay, K., Mahowald, N., Moore, J. K., and Wanninkhof, R.: Mechanisms governing interannual variability in upper-ocean inorganic carbon system and air–sea CO₂ fluxes: Physical climate and atmospheric dust, *Deep-Sea Res. Pt. II*, 56, 640–655, doi:10.1016/j.dsr2.2008.12.006, 2009a. 14719

Dynamics of particulate organic carbon flux in a global ocean model

I. Lima et al.

[Title Page](#)
[Abstract](#)
[Introduction](#)
[Conclusions](#)
[References](#)
[Tables](#)
[Figures](#)
[Back](#)
[Close](#)
[Full Screen / Esc](#)
[Printer-friendly Version](#)
[Interactive Discussion](#)


Doney, S. C., Lima, I., Moore, J. K., Lindsay, K., Behrenfeld, M. J., Westberry, T. K., Mahowald, N., Glover, D. M., and Takahashi, T.: Skill metrics for confronting global upper ocean ecosystem-biogeochemistry models against field and remote sensing data, *J. Marine Syst.*, 76, 95–112, doi:10.1016/j.jmarsys.2008.05.015, 2009b. 14719, 14720, 14733

5 Dunne, J. P., Sarmiento, J. L., and Gnanadesikan, A.: A synthesis of global particle export from the surface ocean and cycling through the ocean interior and on the seafloor, *Global Biogeochem. Cy.*, 21, GB4006, doi:10.1029/2006GB002907, 2007. 14735, 14738, 14739, 14754

Eppley, R. W. and Peterson, B. J.: Particulate organic matter flux and planktonic new production in the deep ocean, *Nature*, 282, 677–680, doi:10.1029/2006GB002907, 1979. 14754

10 François, R., Honjo, S., Krishfield, R., and Manganini, S.: Factors controlling the flux of organic carbon to the bathypelagic zone of the ocean, *Global Biogeochem. Cy.*, 16, 1087, doi:10.1029/2001GB001722,, 2002. 14717, 14722, 14737, 14738, 14739

Gehlen, M., Bopp, L., Emprin, N., Aumont, O., Heinze, C., and Ragueneau, O.: Reconciling surface ocean productivity, export fluxes and sediment composition in a global biogeochemical ocean model, *Biogeosciences*, 3, 521–537, doi:10.5194/bg-3-521-2006, 2006. 14735, 14736, 14754

15 Gent, P. R. and McWilliams, J. C.: Isopycnal Mixing in Ocean Circulation Models, *J. Phys. Oceanogr.*, 20, 150–155, doi:10.1175/1520-0485(1990)020<0150:IMIOCM>2.0.CO;2, 1990. 14720

Guidi, L., Stemmann, L., Jackson, G. A., Ibanez, F., Claustre, H., Legendre, L., Picheral, M., and Gorsky, G.: Effects of phytoplankton community on production, size, and export of large aggregates: A world-ocean analysis, *Limnol. Oceanogr.*, 54, 1951–1963, doi:10.4319/lo.2009.54.6.1951, 2009. 14717

25 Henson, S. A., Sanders, R., Madsen, E., Morris, P. J., Le Moigne, F., and Quartly, G. D.: A reduced estimate of the strength of the ocean's biological carbon pump, *Geophys. Res. Lett.*, 38, L04606, doi:10.1029/2011GL046735, 2011. 14722, 14734, 14735, 14754, 14763

Henson, S., Smyth, R. L., Durkin, C. A., Li, J., Slemmons, K. E. H., and La Nafie, Y. A.: Variability in phytoplankton community structure in response to the North Atlantic Oscillation and implications for organic carbon flux, *Limnol. Oceanogr.*, 57, 1602–1618, http://www.aslo.org/lo/pdf/vol_57/issue_6/1591.pdf, 2012a. 14717

Dynamics of particulate organic carbon flux in a global ocean model

I. Lima et al.

[Title Page](#)
[Abstract](#)
[Introduction](#)
[Conclusions](#)
[References](#)
[Tables](#)
[Figures](#)




[Back](#)
[Close](#)
[Full Screen / Esc](#)
[Printer-friendly Version](#)
[Interactive Discussion](#)

- Henson, S. A., Sanders, R., and Madsen, E.: Global patterns in efficiency of particulate organic carbon export and transfer to the deep ocean, *Global Biogeochem. Cy.*, 26, GB1028, doi:10.1029/2011GB004099, 2012b. 14717, 14722, 14735, 14736, 14737, 14738, 14754
- Honjo, S., Manganini, S. J., Krishfield, R. A., and Francois, R.: Particulate organic carbon fluxes to the ocean interior and factors controlling the biological pump: a synthesis of global sediment trap programs since 1983, *Prog. Oceanogr.*, 76, 217–285, doi:10.1016/j.pocean.2007.11.003, 2008. 14722, 14735, 14736, 14754
- Klaas, C. and Archer, D. E.: Association of sinking organic matter with various types of mineral ballast in the deep sea: Implications for the rain ratio, *Global Biogeochem. Cy.*, 16, 1116, doi:10.1029/2001GB001765, 2002. 14717, 14738, 14739
- Lam, P. J., Doney, S. C., and Bishop, J. K. B.: The dynamic ocean biological pump: Insights from a global compilation of particulate organic carbon, CaCO_3 , and opal concentration profiles from the mesopelagic, *Global Biogeochem. Cy.*, 25, GB3009, doi:10.1029/2010GB003868, 2011. 14717
- Large, W. G., McWilliams, J. C., and Doney, S. C.: Oceanic vertical mixing: A review and a model with a nonlocal boundary layer parameterization, *Rev. Geophys.*, 32, 363–403, doi:10.1029/94RG01872, 1994. 14720
- Laws, E. A., Falkowski, P. G., Smith, W. O., Ducklow, H., and McCarthy, J. J.: Temperature effects on export production in the open ocean, *Global Biogeochem. Cy.*, 14, 1231–1246, doi:10.1029/1999GB001229, 2000. 14735, 14754, 14763
- Lutz, M. J., Caldeira, K., Dunbar, R. B., and Behrenfeld, M. J.: Seasonal rhythms of net primary production and particulate organic carbon flux to depth describe the efficiency of biological pump in the global ocean, *J. Geophys. Res.*, 112, C10011, doi:10.1029/2006JC003706, 2007. 14722, 14733, 14735, 14736, 14754, 14758
- Mahowald, N., Luo, C., del Corral, J., and Zender, C. S.: Interannual variability in atmospheric mineral aerosols from a 22-year model simulation and observational data, *J. Geophys. Res.-Atmos.*, 108, doi:10.1029/2002JD002821, 2003. 14720
- Marshall, J., Ferrari, R., Forget, G., Maze, G., Andersson, A., Bates, N., Dewar, W., Doney, S., Fratantoni, D., Joyce, T., Straneo, F., Toole, J., Weller, R., Edson, J., Gregg, M., Kelly, K., Lozier, S., Palter, J., Lumpkin, R., Samelson, R., Skyllingstad, E., Silverthorne, K., Talley, L., and Thomas, L.: The Climode Field Campaign: Observing the Cycle of Convection and Restratification over the Gulf Stream, *B. Am. Meteorol. Soc.*, 90, 1337–1350, doi:10.1175/2009BAMS2706.1, 2009. 14724

Dynamics of particulate organic carbon flux in a global ocean model

I. Lima et al.

[Title Page](#)
[Abstract](#)
[Introduction](#)
[Conclusions](#)
[References](#)
[Tables](#)
[Figures](#)




[Back](#)
[Close](#)
[Full Screen / Esc](#)
[Printer-friendly Version](#)
[Interactive Discussion](#)


- Martin, J. H., Knauer, G. A., Karl, D. M., and Broenkow, W. W.: VERTEX: carbon cycling in the northeast Pacific, *Deep-Sea Res. Pt. A.*, 34, 267–285, doi:10.1016/0198-0149(87)90086-0, 1987. 14736, 14754
- Moore, J. K. and Doney, S. C.: Iron availability limits the ocean nitrogen inventory stabilizing feedbacks between marine denitrification and nitrogen fixation, *Global Biogeochem. Cy.*, 21, GB2001, doi:10.1016/0198-0149(87)90086-0, 2007. 14719
- Moore, J. K., Doney, S. C., and Lindsay, K.: Upper ocean ecosystem dynamics and iron cycling in a global three-dimensional model, *Global Biogeochem. Cy.*, 18, doi:10.1029/2004GB002220, GB4028, 2004. 14719, 14735, 14754
- Najjar, R. G., Jin, X., Louanchi, F., Aumont, O., Caldeira, K., Doney, S. C., Dutay, J.-C., Follows, M., Gruber, N., Joos, F., Lindsay, K., Maier-Reimer, E., Matear, R. J., Matsumoto, K., Monfray, P., Mouchet, A., Orr, J. C., Plattner, G.-K., Sarmiento, J. L., Schlitzer, R., Slater, R. D., Weirig, M.-F., Yamanaka, Y., and Yool, A.: Impact of circulation on export production, dissolved organic matter, and dissolved oxygen in the ocean: Results from Phase II of the Ocean Carbon-cycle Model Intercomparison Project (OCMIP-2), *Global Biogeochem. Cy.*, 21, GB3007, doi:10.1029/2006GB002857, 2007. 14719
- Schlitzer, R.: Export production in the equatorial and North Pacific derived from dissolved oxygen, nutrient and carbon data, *J. Oceanogr.*, 60, 53–62, doi:10.1023/B:JOCE.0000038318.38916.e6, 2004. 14735, 14754
- Siegenthaler, U., Stocker, T. F., Monnin, E., Lüthi, D., Schwander, J., Stauffer, B., Raynaud, D., Barnola, J.-M., Fischer, H., Masson-Delmotte, V., and Jouzel, J.: Stable Carbon Cycle–Climate Relationship During the Late Pleistocene, *Science*, 310, 1313–1317, doi:10.1126/science.1120130, 2005. 14717
- Volk, T. and Hoffert, M. I.: Ocean carbon pumps: Analysis of relative strengths and efficiencies in ocean-driven atmospheric CO₂ changes, *Geophys. Monogr. Ser.*, 32, 99–110, doi:10.1029/GM032p0099, 1985. 14717
- Wilson, J. D., Barker, S., and Ridgwell, A.: Assessment of the spatial variability in particulate organic matter and mineral sinking fluxes in the ocean interior: Implications for the ballast hypothesis, *Global Biogeochem. Cy.*, 26, GB4011, doi:10.1029/2012GB004398, 2012. 14717
- Yeager, S. G., Shields, C. A., Large, W. G., and Hack, J. J.: The Low-Resolution CCSM3, *J. Climate*, 19, 2545–2566, doi:10.1175/JCLI3744.1, 2006. 14720
- Yool, A., Martin, A. P., Fernández, C., and Clark, D. R.: The significance of nitrification for oceanic new production, *Nature*, 447, 999–1002, doi:10.1038/nature05885, 2007. 14735

Dynamics of particulate organic carbon flux in a global ocean model

I. Lima et al.

[Title Page](#)

[Abstract](#)

[Introduction](#)

[Conclusions](#)

[References](#)

[Tables](#)

[Figures](#)

[⏪](#)

[⏩](#)

[◀](#)

[▶](#)

[Back](#)

[Close](#)

[Full Screen / Esc](#)

[Printer-friendly Version](#)

[Interactive Discussion](#)



Table 1. Parameters from type II linear regressions of POC flux estimates from exponential model (Eq. 1) against POC flux from CCSM-BEC at different depths. The regression slopes are shown with their 95 % confidence interval. The linear regressions were computed using annual and seasonal means of POC flux from CCSM-BEC and their corresponding exponential model fit (annual and seasonal, see Sect. 2.2).

depth	annual		seasonal	
	slope	correlation	slope	correlation
z_0	0.983 ± 0.002	0.998	1.017 ± 0.001	0.998
500 m	0.952 ± 0.004	0.989	0.985 ± 0.002	0.993
1000 m	1.141 ± 0.007	0.971	1.105 ± 0.003	0.981
2000 m	1.044 ± 0.003	0.995	1.039 ± 0.001	0.996

Dynamics of particulate organic carbon flux in a global ocean model

I. Lima et al.

Table 2. Standard partial regression coefficients and coefficients of determination (r^2) for step-wise multivariate linear regression of standardized ($x^* = \frac{x-\bar{x}}{\sigma_x}$) annual mean export ratio (f^*) on standardized annual mean SST, and ratios of vertically integrated NPP by diatoms to total NPP and of dust, opal and CaCO_3 flux to POC flux at the export depth (z_0). SST is used as a proxy for water column temperature. $p < 0.0000001$ for all regression coefficients.

\hat{y}	partial regression coefficients					r^2
	SST*	$\left(\frac{\text{NPP}_{\text{diat}}}{\text{NPP}_{\text{tot}}}\right)^*$	$\left(\frac{F_{\text{opal}}^{z_0}}{F_{\text{POC}}^{z_0}}\right)^*$	$\left(\frac{F_{\text{CaCO}_3}^{z_0}}{F_{\text{POC}}^{z_0}}\right)^*$	$\left(\frac{F_{\text{dust}}^{z_0}}{F_{\text{POC}}^{z_0}}\right)^*$	
f^*	-0.307 ± 0.021	0.446 ± 0.029	-0.028 ± 0.020	-0.271 ± 0.021	-0.006 ± 0.015	0.682
	-0.309 ± 0.020	0.444 ± 0.029	-0.028 ± 0.020	-0.273 ± 0.020		0.682
	-0.306 ± 0.020	0.427 ± 0.026		-0.272 ± 0.020		0.682

Title Page

Abstract

Introduction

Conclusions

References

Tables

Figures

⏪

⏩

◀

▶

Back

Close

Full Screen / Esc

Printer-friendly Version

Interactive Discussion

Dynamics of particulate organic carbon flux in a global ocean model

I. Lima et al.

Table 3. Standard partial regression coefficients and coefficients of determination (r^2) for step-wise multivariate linear regression of standardized ($x^* = \frac{x-\bar{x}}{\sigma_x}$) POC flux at 2000 m ($F_{\text{POC}}^{2000\text{m}*}$) on standardized mean water column temperature for the upper 2000 m (\bar{T}), vertically integrated NPP and mineral ballast fluxes at export depth (z_0). $p < 0.0000001$ for all regression coefficients.

\hat{y}	\bar{T}^*	partial regression coefficients				r^2
		NPP*	$F_{\text{dust}}^{z_0*}$	$F_{\text{CaCO}_3}^{z_0*}$	$F_{\text{opal}}^{z_0*}$	
$F_{\text{POC}}^{2000\text{m}*}$	0.020 ± 0.004	0.049 ± 0.006	0.381 ± 0.003	0.446 ± 0.004	0.703 ± 0.005	0.987
		0.068 ± 0.005	0.385 ± 0.003	0.441 ± 0.004	0.690 ± 0.004	0.987
			0.383 ± 0.003	0.480 ± 0.003	0.717 ± 0.003	0.985
				0.515 ± 0.006	0.665 ± 0.006	0.841
					0.765 ± 0.009	0.586

Title Page

Abstract

Introduction

Conclusions

References

Tables

Figures

◀

▶

◀

▶

Back

Close

Full Screen / Esc

Printer-friendly Version

Interactive Discussion

**Dynamics of
particulate organic
carbon flux in a
global ocean model**

I. Lima et al.

Table 4. Standard partial regression coefficients and coefficients of determination (r^2) for step-wise multivariate linear regression of standardized ($x^* = \frac{x-\bar{x}}{\sigma_x}$) transfer efficiency ($F_{\text{POC}}^{2000\text{m}}/F_{\text{POC}}^{z_0}$) on standardized mean water column temperature for the upper 2000 m (\bar{T}), ratios of vertically integrated NPP by diatoms to total NPP and of dust, opal and CaCO_3 flux to POC flux at the export depth (z_0). $p < 0.0000001$ for all regression coefficients. The upper part of the table shows the coefficients obtained including all model domain regions in the analysis. The lower part of the table shows the coefficients obtained when the North Subtropical Atlantic and North Indian Ocean regions are removed from the analysis.

\hat{y}	partial regression coefficients					r^2	
	\bar{T}^*	$\left(\frac{\text{NPP}_{\text{diat}}}{\text{NPP}_{\text{tot}}}\right)^*$	$\left(\frac{F_{\text{opal}}^{z_0}}{F_{\text{POC}}^{z_0}}\right)^*$	$\left(\frac{F_{\text{CaCO}_3}^{z_0}}{F_{\text{POC}}^{z_0}}\right)^*$	$\left(\frac{F_{\text{dust}}^{z_0}}{F_{\text{POC}}^{z_0}}\right)^*$		
$\left(\frac{F_{\text{POC}}^{2000\text{m}}}{F_{\text{POC}}^{z_0}}\right)^*$	0.034 ± 0.003	-0.005 ± 0.004	0.261 ± 0.003	0.288 ± 0.003	0.898 ± 0.002	0.995	
	0.032 ± 0.002		0.263 ± 0.003	0.286 ± 0.002	0.899 ± 0.002	0.995	
		-0.020 ± 0.002	0.254 ± 0.001	0.275 ± 0.001	0.903 ± 0.001	0.994	
			0.243 ± 0.002	0.283 ± 0.002	0.903 ± 0.002	0.994	
				0.173 ± 0.003	0.899 ± 0.003	0.947	
					0.960 ± 0.004	0.921	
		0.095 ± 0.006	0.002 ± 0.009	0.888 ± 0.006	0.896 ± 0.006	0.239 ± 0.005	0.977
		0.094 ± 0.005		0.888 ± 0.006	0.895 ± 0.005	0.240 ± 0.005	0.977
			-0.076 ± 0.004	0.875 ± 0.003	0.854 ± 0.003	0.248 ± 0.003	0.974
				0.832 ± 0.003	0.884 ± 0.003	0.242 ± 0.003	0.971
				0.812 ± 0.004	0.970 ± 0.004		0.922
					0.551 ± 0.012	0.177 ± 0.012	0.411
					0.620 ± 0.011		0.385

[Title Page](#)

[Abstract](#) [Introduction](#)

[Conclusions](#) [References](#)

[Tables](#) [Figures](#)

[⏪](#) [⏩](#)

[◀](#) [▶](#)

[Back](#) [Close](#)

[Full Screen / Esc](#)

[Printer-friendly Version](#)

[Interactive Discussion](#)



Dynamics of particulate organic carbon flux in a global ocean model

I. Lima et al.

Table 5. Global annual export and global mean export ratios and transfer efficiencies from other studies in the literature. The transfer efficiency for Martin et al. (1987) was estimated using an export depth equal to the global mean for CCSM-BEC ($T_{\text{eff}} = 100 \left(\frac{2000}{110.4} \right)^{-0.858}$). Laws et al. (2000) estimate is for total export (POC + DOC). The export ratios (f) between parentheses were estimated from global POC exports assuming global NPP of 51 Pg C yr^{-1} (Carr et al., 2006).

study	export (Pg C yr^{-1})	f (%)	T_{eff} (%)
Laws et al. (2000)	11.1	21	
Schlitzer (2004)	9.6	(18.8)	
Gehlen et al. (2006)	5–10	13.5–28.6	
Dunne et al. (2007)	9.6	(18.8)	
Eppley and Peterson (1979)	4.7	20	
Moore et al. (2004)	5.8	8.3	
Lutz et al. (2007)	4.6	(9)	
Honjo et al. (2008)	5.7	16.3	7.6
Henson et al. (2011, 2012b)	4	10	19
Martin et al. (1987)			8.3

Title Page

Abstract

Introduction

Conclusions

References

Tables

Figures

⏪

⏩

◀

▶

Back

Close

Full Screen / Esc

Printer-friendly Version

Interactive Discussion

Dynamics of particulate organic carbon flux in a global ocean model

I. Lima et al.

Table 6. Global annual POC export and area-weighted global mean export ratios ($f = F_{\text{POC}}^{z_0}/\text{NPP} \times 100$) and transfer efficiencies ($T_{\text{eff}} = F_{\text{POC}}^{2000\text{m}}/F_{\text{POC}}^{z_0} \times 100$) for the eight POC flux models shown in Fig. 10. The 95% confidence interval for the global export estimates from the different models were computed using the bootstrap method with 10 000 samples drawn randomly with replacement.

model	input NPP	export (Pg C yr^{-1})	f (%)	T_{eff} (%)
CCSM-BEC		6.04 ± 0.12	12.9	5.5
Lutz	satellite	4.17 ± 0.06	6.7	34.4
Lutz “null”	satellite	4.27 ± 0.05	7.3	38.3
exponential “global”	satellite	2.23 ± 0.03	3.8	23.4
exponential “regional”	satellite	5.32 ± 0.09	8.6	22.8
Lutz	CCSM-BEC	4.33 ± 0.08	10.8	31.3
exponential “global”	CCSM-BEC	4.78 ± 0.06	9.7	29.2
exponential “regional”	CCSM-BEC	7.73 ± 0.25	16.7	25.4

Title Page

Abstract

Introduction

Conclusions

References

Tables

Figures

⏪

⏩

◀

▶

Back

Close

Full Screen / Esc

Printer-friendly Version

Interactive Discussion

Table 7. Equation parameters definitions and values.

Parameter	Value	Units	Definition
T_{ref}	30	°C	reference temperature
q_{10}	2		temperature dependence factor
$SiO_3 q_{10}$	4		temperature dependence factor for particulate SiO_3 remin
$POC q_{10}$	1.12		temperature dependence factor for POC remin
m_{sp}	0.1	d^{-1}	small phyto. linear mortality rate
m_{diat}	0.1	d^{-1}	diatom linear mortality rate
p_{sp}	0.009	$(mmolC)^{-1} m^3 d^{-1}$	small phyto. quadratic mortality rate
p_{diat}	0.009	$(mmolC)^{-1} m^3 d^{-1}$	diatom quadratic mortality rate
m_{diaz}^{POC}	0.16	d^{-1}	diazotrophs linear mortality rate
e_{sp}^{max}	0.22	$(mmolC)^{-1}$	small phyto. grazing factor
a_{sp}^{max}	0.2	d^{-1}	max. aggregation rate for small phyto
a_{diat}^{max}	0.2	d^{-1}	max. aggregation rate for diatoms
a_{diat}^{min}	0.01	d^{-1}	min. aggregation rate for diatoms
u_{sp}^{max}	2.75	d^{-1}	max. zoo. growth rate on small phyto. at T_{ref}
u_{diat}^{max}	2.07	d^{-1}	max. zoo. growth rate on diatoms at T_{ref}
u_{diaz}^{max}	1.2	d^{-1}	max. zoo. growth rate on diazotrophs at T_{ref}
m_z	0.1	d^{-1}	zoo. linear mortality rate
p_z	0.45	$(mmolC)^{-1} m^3 d^{-1}$	zoo. quadratic mortality rate
g	1.05	$mmolC m^{-3}$	zoo. grazing coefficient
f_z^{diat}	0.81		scaling factor for grazing on diatoms
$f_z^{diat, POC}$	0.26		fraction of diatom grazing routed to POC
f_z^{POC}	0.05		fraction of diatom loss routed to POC
$f_z^{diat, loss}$	0.21		fraction of diazotrophs grazing routed to zoo
$f_z^{diat, POC}$	0.0		fraction of diazotrophs grazing routed to POC
$f_z^{sp, POC}$	0.06666		fraction of zoo. losses routed to POC when eating small phyto.
$f_z^{diat, POC}$	0.1333		fraction of zoo. losses routed to POC when eating diatoms
$f_z^{diat, POC}$	0.03333		fraction of zoo. losses routed to POC when eating diazotrophs
$f_z^{CaCO_3, POC}$	0.4		min. proportionality between $Q_{sp}^{CaCO_3}$ and grazing losses to POC
$f_z^{sp, POC}$	0.24		upper limit on fraction of grazing on small phyto. routed to POC
$f_z^{CaCO_3, remin}$	0.33		fraction of SP_{CaCO_3} grazing which is remineralized
M_{POC}	12.01	$gmol^{-1}$	POC molar mass
M_{CaCO_3}	100.09	$gmol^{-1}$	$CaCO_3$ molar mass

Dynamics of particulate organic carbon flux in a global ocean model

I. Lima et al.

Title Page

Abstract Introduction

Conclusions References

Tables Figures

⏪ ⏩

◀ ▶

Back Close

Full Screen / Esc

Printer-friendly Version

Interactive Discussion



Dynamics of particulate organic carbon flux in a global ocean model

I. Lima et al.

[Title Page](#)
[Abstract](#)
[Introduction](#)
[Conclusions](#)
[References](#)
[Tables](#)
[Figures](#)
[Back](#)
[Close](#)
[Full Screen / Esc](#)
[Printer-friendly Version](#)
[Interactive Discussion](#)
Table 7. Continued.

Parameter	Value	Units	Definition
M_{SiO_3}	60.08	g mol^{-1}	SiO_3 molar mass
M_{Fe}	55.847	g mol^{-1}	Fe molar mass
ω_{PCaCO_3}	0.07	$\text{g POC}(\text{gCaCO}_3)^{-1}$	associated POC/ CaCO_3 mass ratio for particulate matter
ω_{PSiO_3}	0.035	$\text{g POC}(\text{gPSiO}_3)^{-1}$	associated POC/ SiO_3 mass ratio for particulate matter
ω_{dust}	0.07	$\text{g POC}(\text{gdust})^{-1}$	associated POC/dust mass ratio for particulate matter
λ_{POC}	130 (260)*	m	rem mineralization length scale for “soft” POC (if $[\text{O}_2] < 4 \text{ mmol m}^{-3}$)*
λ_{CaCO_3}	600	m	rem mineralization length scale for “soft” particulate CaCO_3
λ_{SiO_3}	22	m	rem mineralization length scale for “soft” particulate SiO_3
λ_{dust}	600	m	rem mineralization length scale for “soft” dust
λ_{hard}	4×10^4	m	rem mineralization length scale for all “hard” particulate subclasses
$f_{\text{PCaCO}_3}^{\text{hard}}$	0.55		fraction of particulate CaCO_3 production routed to “hard” subclass
$f_{\text{PSiO}_3}^{\text{hard}}$	0.37		fraction of particulate SiO_3 production routed to “hard” subclass
$f_{\text{dust}}^{\text{hard}}$	0.97		fraction of surface dust flux routed to “hard” subclass
$f_{\text{dust}}^{\text{bio}}$	0.02		fraction of surface iron dust flux that is bioavailable

Dynamics of particulate organic carbon flux in a global ocean model

I. Lima et al.

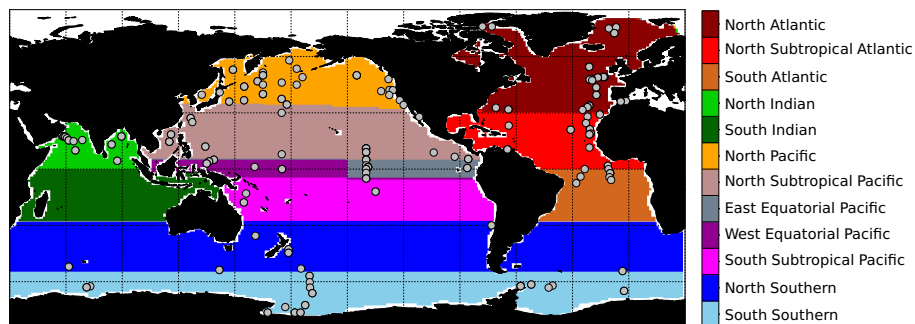


Fig. 1. CCSM-BEC model domain regions and location of sediment traps in the Lutz et al. (2007) data set.

[Title Page](#)

[Abstract](#)

[Introduction](#)

[Conclusions](#)

[References](#)

[Tables](#)

[Figures](#)

[⏪](#)

[⏩](#)

[◀](#)

[▶](#)

[Back](#)

[Close](#)

[Full Screen / Esc](#)

[Printer-friendly Version](#)

[Interactive Discussion](#)

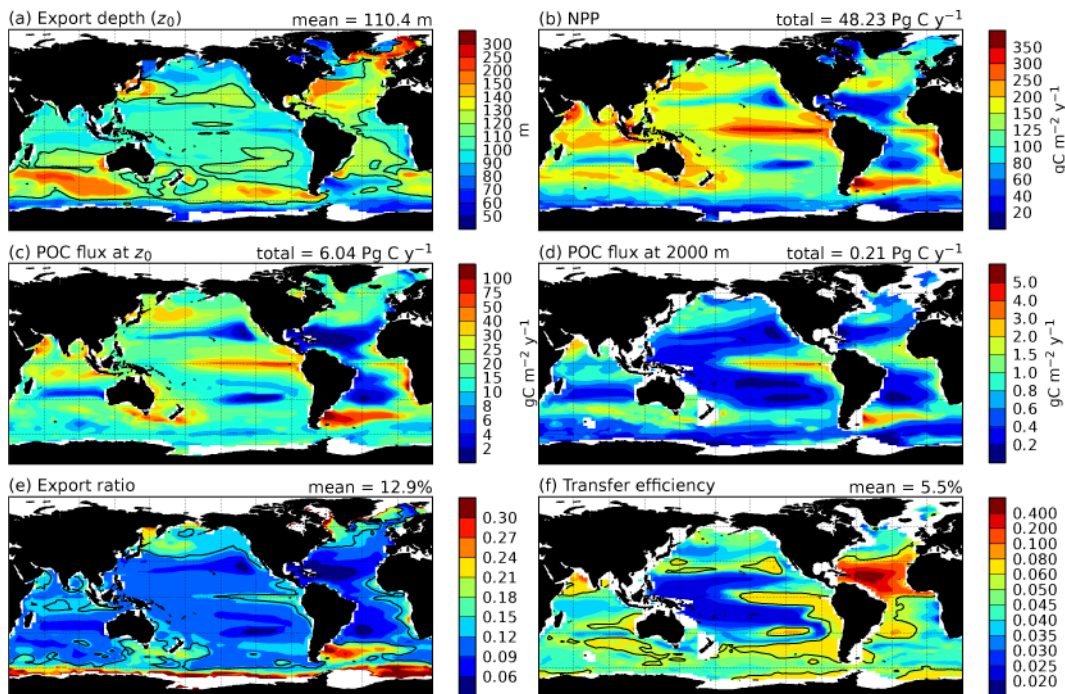


Fig. 2. CCSM-BEC annual mean export depth **(a)**, annual net primary production (NPP) **(b)**, POC flux at export depth **(c)** and 2000 m **(d)**, export ratio **(e)** and transfer efficiency **(f)**. Export ratio **(e)** is defined as POC flux at export depth **(c)** divided by annual NPP **(b)**. Transfer efficiency **(f)** is defined as POC flux at 2000 m **(d)** divided by POC flux at export depth **(c)**. Global integrals (NPP, POC flux at export depth and 2000 m) and means (export depth, export ratio and transfer efficiency) are shown on the top right corner of the each panel. The solid black lines in **(a)**, **(e)** and **(f)** denote the contour for the global mean value.

Dynamics of particulate organic carbon flux in a global ocean model

I. Lima et al.

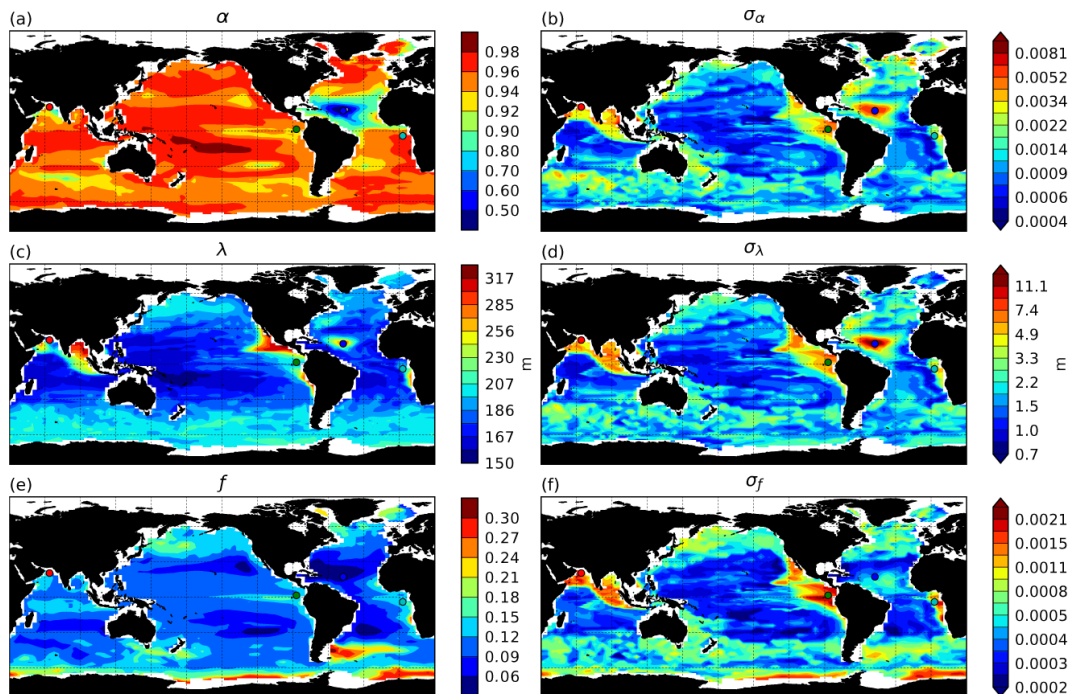


Fig. 3. Distribution of α , λ and f (**a, c, e**) and their standard errors (**b, d, f**) obtained from fitting Eq. (1) to CCSM-BEC annual mean POC flux profiles and NPP at each model grid point. The colored circles mark the location of the vertical profiles shown in Fig. 5.

Dynamics of particulate organic carbon flux in a global ocean model

I. Lima et al.

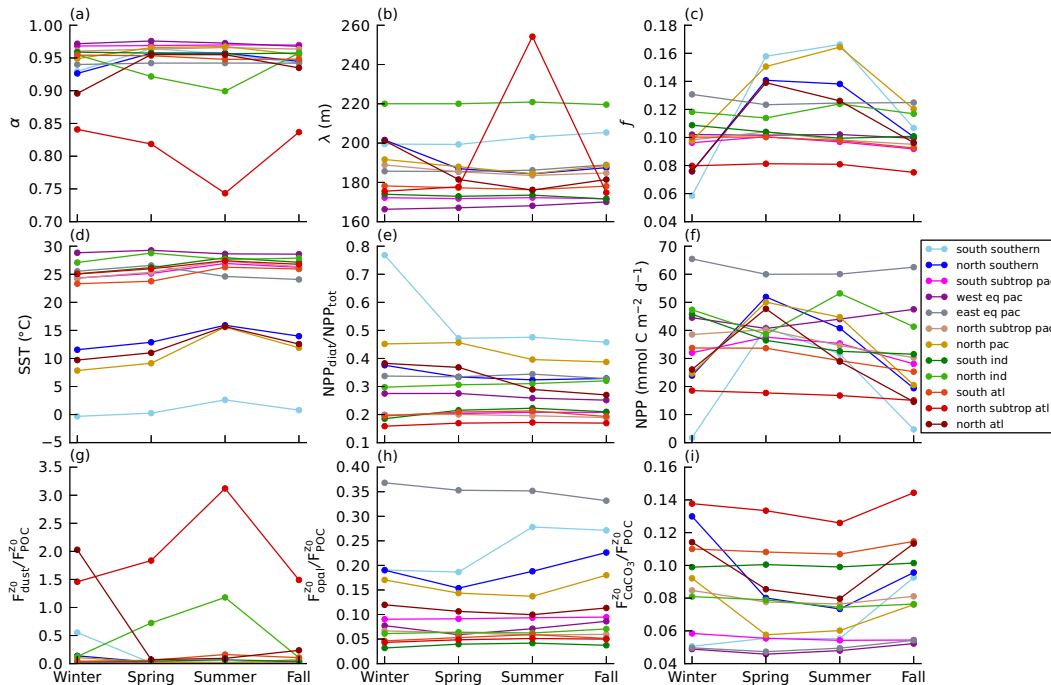


Fig. 4. Annual cycle of regional averages of estimated values of α (a), λ (b), f (c), sea surface temperature (d), the ratio of vertically integrated NPP by diatoms to total NPP (e), total NPP (f), and the ratio of dust (g), opal (h) and CaCO_3 (i) flux to POC flux at export depth (z_0). Line colors correspond to the colors of the CCSM-BEC domain regions shown in Fig. 1.

Title Page

Abstract

Introduction

Conclusions

References

Tables

Figures

◀

▶

◀

▶

Back

Close

Full Screen / Esc

Printer-friendly Version

Interactive Discussion

Dynamics of particulate organic carbon flux in a global ocean model

I. Lima et al.

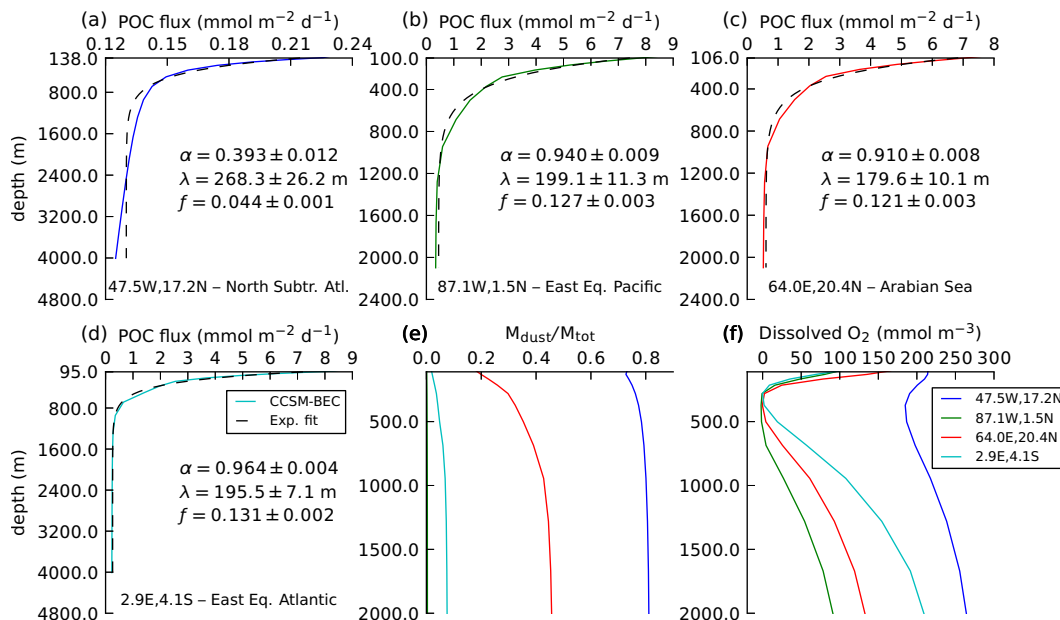


Fig. 5. (a–d) show vertical profiles of POC flux at the locations marked in Fig. 3 where the errors for the exponential model are relatively large compared to the rest of the global ocean. The solid lines represent the POC flux from CCSM-BEC and the dashed lines show the exponential fit (Eq. 1). The estimated values of α , λ and f and their 95% confidence intervals are also shown for each location. (e) and (f) show the mass flux (M) ratio ($\text{g m}^{-2} \text{d}^{-1} / \text{g m}^{-2} \text{d}^{-1}$) of sinking dust to total particulate sinking material and dissolved oxygen from CCSM-BEC, respectively, at the same locations shown in (a–d). The color of the solid lines corresponds to the color of the circles marking the location of the profiles in Fig. 3.

[Title Page](#)
[Abstract](#)
[Introduction](#)
[Conclusions](#)
[References](#)
[Tables](#)
[Figures](#)
[Back](#)
[Close](#)
[Full Screen / Esc](#)
[Printer-friendly Version](#)
[Interactive Discussion](#)

Dynamics of particulate organic carbon flux in a global ocean model

I. Lima et al.

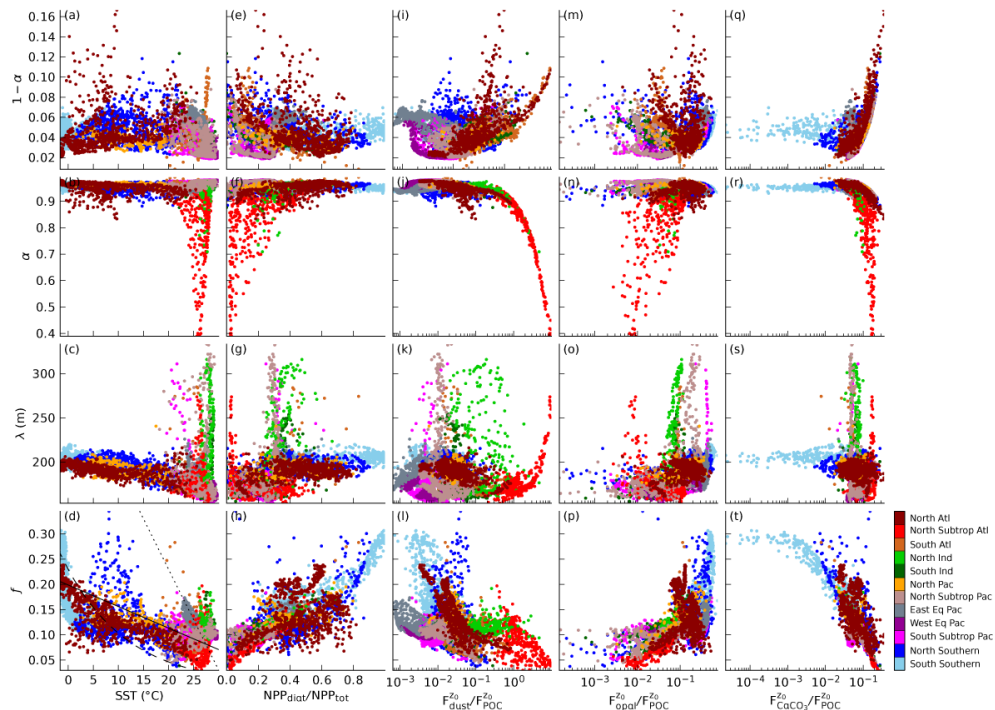


Fig. 6. $1 - \alpha$, α , λ and f obtained from fitting Eq. (1) to CCSM-BEC annual mean POC flux profiles and NPP plotted against annual means of sea surface temperature (SST) (**a–d**), ratio of vertically integrated NPP by diatoms to total NPP (**e–h**) and the ratio of dust (**i–l**), opal (**m–p**) and CaCO_3 (**q–t**) flux to POC flux at z_0 in CCSM-BEC. $1 - \alpha$ is plotted with the regions of high atmospheric dust deposition (North Subtropical Atlantic and North Indian Ocean) removed. Points are colored according to model domain region (Fig. 1). In (**d**), the solid black line shows the type II linear regression between SST and estimated f values (correlation coefficient $r = -0.61$, slope $b = -0.00427 \pm 9.07 \times 10^{-5}$), and the dashed and dotted lines show the f ratio as function of SST relationships of Henson et al. (2011) and Laws et al. (2000), respectively.

Dynamics of particulate organic carbon flux in a global ocean model

I. Lima et al.

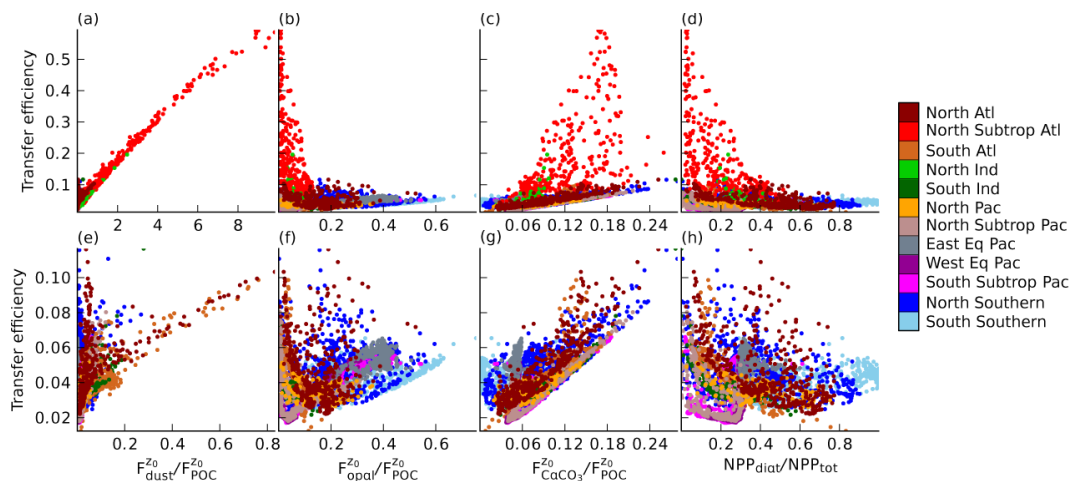


Fig. 7. Transfer efficiency (ratio of POC flux at 2000 m to POC flux at z_0) plotted against the ratio of dust (**a, e**), opal (**b, f**) and CaCO_3 (**c, g**) fluxes to POC flux at export depth (z_0), and the ratio of vertically integrated NPP by diatoms to total NPP (**d, h**). In (**e–h**), the regions of high atmospheric dust deposition (North Subtropical Atlantic and North Indian Ocean) have been removed.

[Title Page](#)
[Abstract](#)
[Introduction](#)
[Conclusions](#)
[References](#)
[Tables](#)
[Figures](#)
[Back](#)
[Close](#)
[Full Screen / Esc](#)
[Printer-friendly Version](#)
[Interactive Discussion](#)

Dynamics of particulate organic carbon flux in a global ocean model

I. Lima et al.

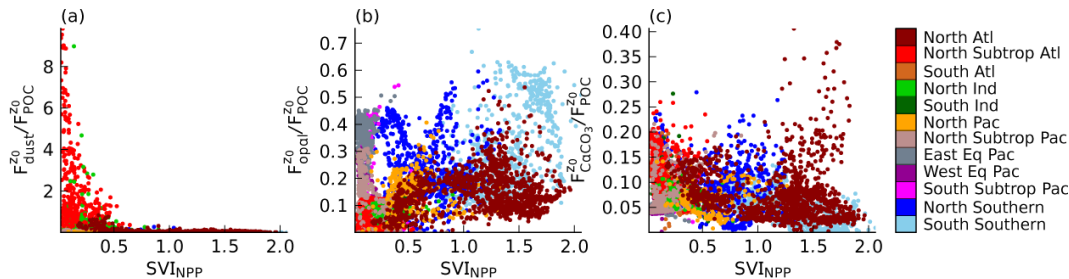


Fig. 8. Seasonal variation index for NPP (SVI_{NPP}) plotted against the ratios of **(a)** dust, **(b)** opal and **(c)** $CaCO_3$ flux to POC flux at the export depth (z_0) from CCSM-BEC. SVI_{NPP} is defined as the coefficient of variation ($SVI_{NPP} = \frac{\sigma_{NPP}}{NPP}$) of a 12-month climatology of NPP from CCSM-BEC.

Title Page

Abstract

Introduction

Conclusions

References

Tables

Figures

⏪

⏩

◀

▶

Back

Close

Full Screen / Esc

Printer-friendly Version

Interactive Discussion

Dynamics of particulate organic carbon flux in a global ocean model

I. Lima et al.

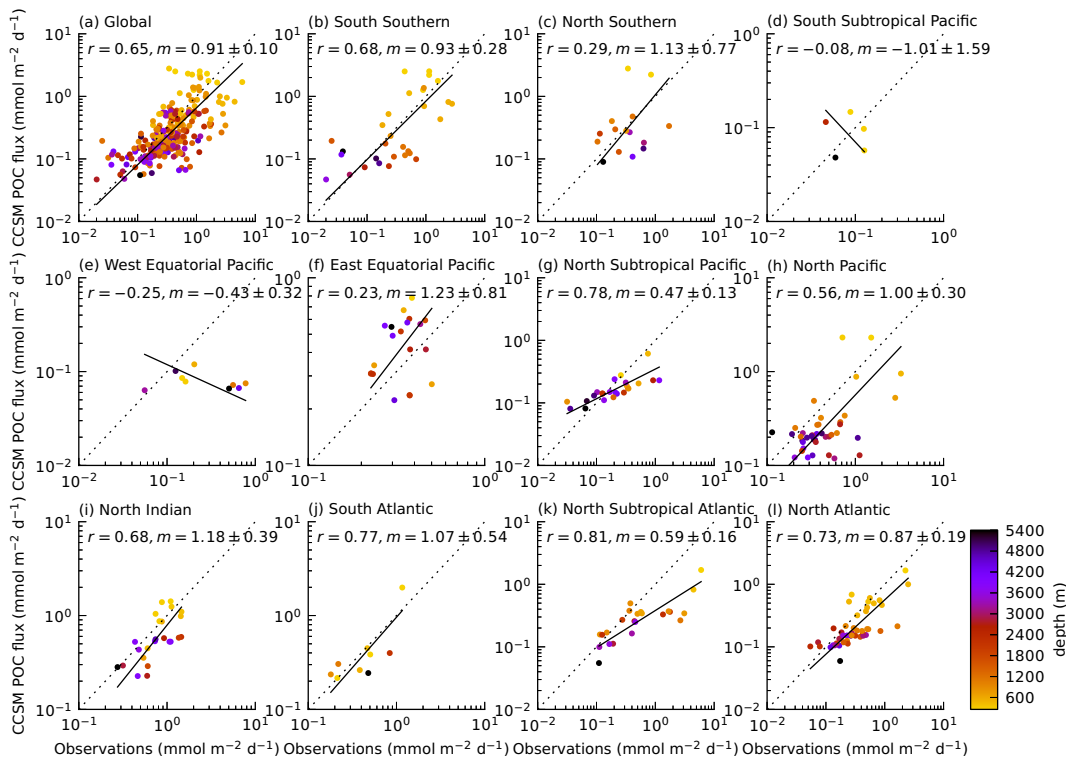


Fig. 9. Annual mean POC flux from CCSM-BEC model at sediment trap locations and depths plotted against observations from the Lutz data set for the whole globe (all points combined) and each domain region (Fig. 1). Sediment trap data is absent in the South Indian Ocean so that region is not shown. Solid black lines show type II linear regression and dotted black lines show the 1 : 1 slope. The correlation coefficient (r) and regression slope (m) for the log₁₀-transformed data are shown in each panel. Color scale indicates depth of sediment traps.

Dynamics of particulate organic carbon flux in a global ocean model

I. Lima et al.

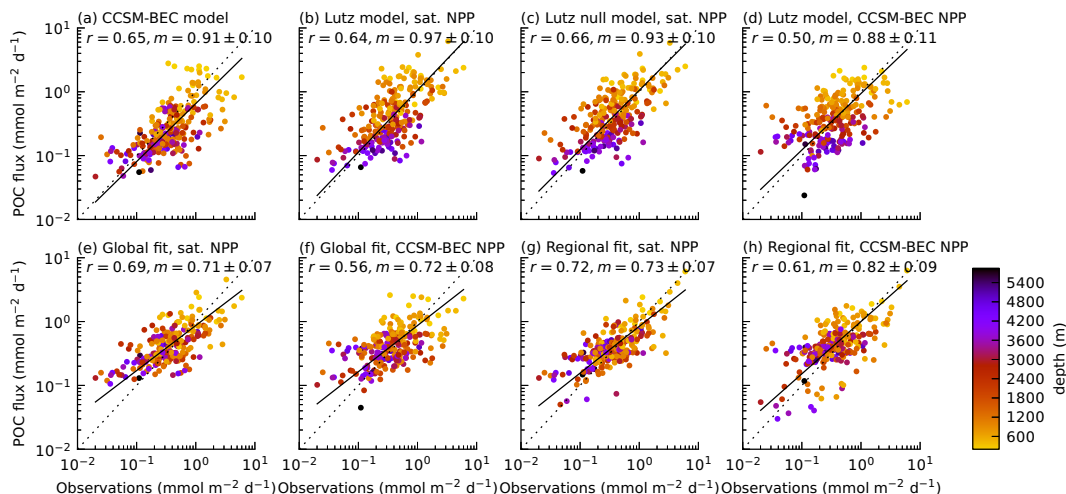


Fig. 10. POC flux estimates at sediment trap locations plotted against observations from the Lutz data set: **(a)** CCSM-BEC model, **(b)** Lutz model using satellite NPP, **(c)** Lutz null model using satellite NPP, **(d)** Lutz model using CCSM-BEC NPP; **(e)** and **(f)** show estimates from fit of exponential curve (Eq. 1) to Lutz data set (all data points combined) using NPP from satellite and CCSM-BEC, respectively; **(g)** and **(h)** show estimates from fit of exponential curve (Eq. 1) to Lutz data set for each region of the model domain (Fig. 1) using NPP from satellite and CCSM-BEC, respectively. In **(g)** and **(h)**, the regions with no observations or poor fit use parameter values from the global fit (**e** and **f**). Solid black lines show the type II linear regression of the \log_{10} -transformed data. The correlation coefficient (r) and regression slope (m) are shown in each panel. Color scale indicates depth of sediment traps.