

This discussion paper is/has been under review for the journal Biogeosciences (BG).
Please refer to the corresponding final paper in BG if available.

Estimating spatial variation in Alberta forest biomass from a combination of forest inventory and remote sensing data

J. Zhang¹, S. Huang², E. H. Hogg³, V. Lieffers¹, Y. Qin⁴, and F. He¹

¹Department of Renewable Resources, University of Alberta, Edmonton, Alberta, T6G 2H1, Canada

²Forest Management Branch, Alberta Department of Environment and Sustainable Resource Development, 8th Floor, 9920-108 Street, Edmonton, Alberta, T5K 2M4, Canada

³Canadian Forest Service, Natural Resources Canada, Northern Forestry Centre, 5320-122 Street, Edmonton, Alberta, T6H 3S5, Canada

⁴Geographic Information Science Center of Excellence, South Dakota State University, Brookings, South Dakota, 57007, USA

Received: 29 October 2013 – Accepted: 18 November 2013 – Published: 4 December 2013

Correspondence to: J. Zhang (zjian@ualberta.ca)

Published by Copernicus Publications on behalf of the European Geosciences Union.

Estimating spatial variation in Alberta forest biomass

J. Zhang et al.

[Title Page](#)

[Abstract](#)

[Introduction](#)

[Conclusions](#)

[References](#)

[Tables](#)

[Figures](#)

[⏪](#)

[⏩](#)

[◀](#)

[▶](#)

[Back](#)

[Close](#)

[Full Screen / Esc](#)

[Printer-friendly Version](#)

[Interactive Discussion](#)



Abstract

Uncertainties in the estimation of tree biomass carbon storage across large areas pose challenges for the study of forest carbon cycling at regional and global scales. In this study, we attempted to estimate the present biomass carbon storage in Alberta, Canada, by taking advantage of a spatially explicit dataset derived from a combination of forest inventory data from 1968 plots and spaceborne light detection and ranging (LiDAR) canopy height data. Ten climatic variables together with elevation, were used for model development and assessment. Four approaches, including spatial interpolation, non-spatial and spatial regression models, and decision-tree based modelling with random forests algorithm (a machine-learning technique), were compared to find the “best” estimates. We found that the random forests approach provided the best accuracy for biomass estimates. Non-spatial and spatial regression models gave estimates similar to random forests, while spatial interpolation greatly overestimated the biomass storage. Using random forests, the total biomass stock in Alberta forests was estimated to be 3.11×10^9 Mg, with the average biomass density of 77.59 Mg ha^{-1} . At the species level, three major tree species, lodgepole pine, trembling aspen and white spruce, stocked about 1.91×10^9 Mg biomass, accounting for 61 % of total estimated biomass. Spatial distribution of biomass varied with natural regions, land cover types, and species. And the relative importance of predictor variables on determining biomass distribution varied with species. This study showed that the combination of ground-based inventory data, spaceborne LiDAR data, land cover classification, climatic and environmental variables was an efficient way to estimate the quantity, distribution and variation of forest biomass carbon stocks across large regions.

1 Introduction

Forest ecosystems, accounting for over 80 % of terrestrial vegetation biomass, play a major role in balancing regional and global carbon (C) budget and analyzing the fate

BGD

10, 19005–19044, 2013

Estimating spatial variation in Alberta forest biomass

J. Zhang et al.

Title Page

Abstract

Introduction

Conclusions

References

Tables

Figures



Back

Close

Full Screen / Esc

Printer-friendly Version

Interactive Discussion



Estimating spatial variation in Alberta forest biomass

J. Zhang et al.

[Title Page](#)

[Abstract](#)

[Introduction](#)

[Conclusions](#)

[References](#)

[Tables](#)

[Figures](#)

[⏪](#)

[⏩](#)

[◀](#)

[▶](#)

[Back](#)

[Close](#)

[Full Screen / Esc](#)

[Printer-friendly Version](#)

[Interactive Discussion](#)



of carbon dioxide produced by the burning of fossil fuels and forest harvesting (Dixon et al., 1994; Brown et al., 1997; Houghton et al., 2009). The accurate estimation of broad-scale biomass C stocks has been a focus of regional and global C cycle studies and has attracted the interest of researchers, forest managers and policy makers over the past half century. A proper assessment of actual and potential roles of forest ecosystems in the global C cycle requires accurate information about carbon storage and change over space and time (Botkin and Simpson, 1990). However, such accurate information has been lacking at regional and global scales.

A number of approaches have been developed to estimate spatial distribution of biomass C stocks, ranging from allometric regression equations or biomass expansion factors (e.g., Brown, 1997; Cairns et al., 1997; Schroeder et al., 1997), local and regional scale forest inventories (Monserud et al., 2006; Blackard et al., 2008), simulation modelling (Tans et al., 1990; Ciais et al., 1995), to methods using only remote sensing or combined with inventory data (Hall et al., 2011; Myneni et al., 2001; Wulder et al., 2008; Yemshanov et al., 2012). However, the estimates obtained by these different approaches are often inconsistent. For example, Houghton et al. (2001) compared several biomass estimates for the Brazilian Amazon forests and found very low agreement across the estimates, with the range ranging from 39 to 93 gigatons (Gt) of carbon. Blackard et al. (2008) compared several estimates of C pools in living forest biomass of continental US forests and found that satellite-image based estimation was two times higher than estimates based on inventory data.

Forest ground-based inventory laid out in a statistically sound design is considered to be the optimum approach to accurately and precisely measure forest biomass C stocks (Schroeder et al., 1997; Ketterings et al., 2001; Brown, 2002). However, sampling a sufficient number of trees to represent the size and species distribution in a forest is extremely time-consuming and costly. The task becomes much harder for accurate estimation of biomass C stocks over large areas. For carbon estimation at the regional scale, most researchers tend to measure biomass on a few small, generally non-randomly selected plots, and use various prediction approaches (e.g., spa-

Estimating spatial variation in Alberta forest biomass

J. Zhang et al.

[Title Page](#)

[Abstract](#)

[Introduction](#)

[Conclusions](#)

[References](#)

[Tables](#)

[Figures](#)

⏪

⏩

◀

▶

[Back](#)

[Close](#)

[Full Screen / Esc](#)

[Printer-friendly Version](#)

[Interactive Discussion](#)



tial interpolation techniques, and regression models), to estimate regional biomass C stocks based on observed values of these small sampling plots. However, inventories based on ground samplings are not free of problems. The first problem is related to the scarcity of ground-based inventory plots (Botkin and Simpson, 1990; Wulder et al., 2008; Pan et al., 2011). The lack of sufficient and high-quality sample plots has been identified as a major barrier to the development of robust biomass estimates and to the subsequent validation of these estimates (Wulder et al., 2008). For example, in a recent report about global carbon storage, Pan et al. (2011) stated that estimates of C stocks are only limited to the 230 million hectares (Mha) of managed forest in Canada, leaving about 118 Mha of northern forests unaccounted for because of data paucity. The second problem is related to the fact that forest inventories tend to be conducted in forests that are considered to have commercial value, i.e., closed forests, with little regard to the open, drier forests, woodlands, or human-disturbed forests (Botkin and Simpson, 1990; Brown, 1997). This biased sampling design usually tends to overestimate biomass C stocks over large areas.

Light Detection And Ranging (LiDAR) is perhaps the most promising remote sensing technology for estimating biomass because it directly measures vertical forest structure, such as canopy height and crown dimensions (Simard et al., 2011). Generally, LiDAR remote sensing has three platforms, including spaceborne, airborne, and ground-based platforms. While airborne or ground-based LiDAR methods have been intensely used for biomass-related measurements at the stand level or individual tree level, these methods are only feasible at local or small-regional scales, rarely at larger scales (Popescu et al., 2011). The main reason of this restriction is because the costs of airborne or ground-based LiDAR on data acquisition and analysis are still high at large extents (Popescu et al., 2011; Saatchi et al., 2011). For biomass and carbon estimation at the regional scale, spaceborne LiDAR with relatively low cost has some competitive advantages.

The boreal forest, containing large amounts of carbon in its biomass and soils, has been recognized as an important global contributor to the net balance of carbon ex-

Estimating spatial variation in Alberta forest biomass

J. Zhang et al.

[Title Page](#)

[Abstract](#)

[Introduction](#)

[Conclusions](#)

[References](#)

[Tables](#)

[Figures](#)

[⏪](#)

[⏩](#)

[◀](#)

[▶](#)

[Back](#)

[Close](#)

[Full Screen / Esc](#)

[Printer-friendly Version](#)

[Interactive Discussion](#)



change between the atmosphere and the biosphere (Kurz and Apps, 1999; Fyles et al., 2002; Pan et al., 2011). According to Intergovernmental Panel on Climate Change (IPCC, 2007), climate warming in northern latitudes is occurring almost twice as rapidly as the global average. Climate warming in the boreal may be leading to increases the frequency of wildfires (Harden et al., 2000), insect outbreaks (e.g., mountain pine beetle, Kurz et al., 2008) and regional drought events (Allen et al., 2010), thus influencing carbon stocks and dynamics (Kurz et al., 2008; Monserud et al., 2006; Pan et al., 2011). Since forest biomass is a key biophysical parameter in evaluating and modeling terrestrial carbon stocks and dynamics (Houghton et al., 2009), an accurate estimation of regional biomass is important for understanding boreal forests and their responses to climate warming. However, most of the previous studies for biomass estimations in the boreal were limited to the regions with high productivity and little disturbance (Botkin and Simpson, 1990). There is a lack of information about biomass in regions under other successional stages and different disturbance extents. In addition, for remote areas in northern boreal regions, few ground inventory data are available.

In this study, we estimated biomass carbon stocks in the forest regions of Alberta, Canada, using recent forest inventory data from different forest monitoring networks and remote sensing data. Our inventory data had a large sample size, covered a broad range, and included different disturbance types, stand age groups, and successional stages. Our objectives were to: (1) produce a spatially explicit dataset of Alberta forest biomass carbon stocks; (2) quantify the relative contributions of various predictor layers including climatic variables, elevation and canopy height to the biomass carbon stocks; and (3) assess the variability in estimation of biomass carbon stocks using different techniques.

2 Methods

2.1 Study area

The forests of the Canadian province of Alberta (49–60° N, 110–120° W) cover an area of about 45 million hectares (ha), accounting for about 68 % of the total area of the province. They encompass four natural regions: Boreal forest, Foothills, Rocky Mountains and Canadian Shield (Alberta Natural Regions Committee, 2006). These regions have short summers and long and cold winters. Mean annual temperature ranges from –2.6 °C in the Canadian Shield to 1.7 °C in the Foothills. Mean warmest month temperature ranges from 11.0 °C in the Rocky Mountains to 16.6 °C in the Canadian Shield, and mean coldest month temperature ranges from –25.1 °C in the Canadian Shield to –11.7 °C in the Rocky Mountains. Precipitation follows a summer-high continental pattern. Mean annual precipitation ranges from 380 mm in the Canadian Shield to about 800 mm in the Rocky Mountains. Elevations range from about 150 m near the Alberta–Northwest Territories border to over 3600 m in the Rocky Mountains. There is also large variation in climatic variables within the subregions of each natural region.

Variation in climate and topography in this area has produced a wide range of vegetation types across the province. In the Boreal natural region, deciduous aspen (*Populus tremuloides*) and balsam poplar (*Populus balsamifera*) and coniferous white spruce (*Picea glauca*), black spruce (*Picea mariana*) and jack pine (*Pinus banksiana*) forests are the dominant species. In the Foothills, mixed forests of aspen, lodgepole pine (*Pinus contorta*), white spruce and balsam poplar with variable understories are dominant on average sites at lower elevations, while at higher elevations lodgepole pine forests with less diverse understories are typical. In the Rocky Mountains, closed coniferous forests are dominant at lower elevations, and open coniferous stands and herbaceous alpine meadows are the major vegetation types at higher elevations. In the Canadian Shield, open jack pine, aspen and birch stands occur where the soil is sufficiently deep.

Estimating spatial variation in Alberta forest biomass

J. Zhang et al.

Title Page

Abstract

Introduction

Conclusions

References

Tables

Figures



Back

Close

Full Screen / Esc

Printer-friendly Version

Interactive Discussion



2.2 Data sources

We combined three different sources of ground-based inventory data for our current study, including 342 permanent sample plots (PSPs) from Alberta Environment and Sustainable Resource Development (ESRD), 635 PSPs from Weyerhaeuser Canada, 501 PSPs from West Fraser Mill Ltd., and 490 plots from Alberta Biodiversity Monitoring Institute (ABMI). In total, 1968 plots measured in the period 2000–2012 were selected to estimate current biomass carbon stock in Alberta forest region (Fig. 1). For the selected plots with more than one census, only the latest inventory data was selected for the current analysis.

2.2.1 Permanent sample plots (PSPs)

The Alberta PSP network has maintained more than two thousand PSPs established and re-censused by the government and forest companies starting from 1950s. Most PSPs were selected in forest regions with high productivity, and these plots were excluded from normal harvesting and other human disturbances. Plot sizes ranged from 400m² (0.04 ha) to 8092m² (0.81 ha) (mean: 0.12 ha). Within each PSP of ESRD, all living trees and standing dead trees (snags) with tree height ≥ 1.3 m were tagged and recorded. Within each PSP of Weyerhaeuser Canada, all living trees and snags with DBH (diameter at breast height) ≥ 5 cm were measured. Within each PSP of West Fraser, all living trees and snags with DBH ≥ 7 cm were measured. These 1478 PSPs contained 206 213 living trees and 17 688 snags over the study period.

2.2.2 ABMI sampling plots

ABMI conducts a regional-scale, long-term monitoring program to track biodiversity status and trends in Alberta (<http://www.ABMI.ca>). ABMI collects information on thousands of terrestrial species and habitat structures at over one thousand sites spaced systematically on a 20 km grid evenly across the entire province. Terrestrial survey

BGD

10, 19005–19044, 2013

Estimating spatial variation in Alberta forest biomass

J. Zhang et al.

Title Page

Abstract

Introduction

Conclusions

References

Tables

Figures

◀

▶

◀

▶

Back

Close

Full Screen / Esc

Printer-friendly Version

Interactive Discussion



sites are established on each grid with a random distance and directional offset of up to 5.5 km from this grid. Different from the PSP network, ABMI sampling plots were more randomly distributed and were thus more representative of the full range of forest stand ages and disturbance regimes at the landscape level. The area of each ABMI plot is one hectare (100 × 100 m). On each site, all trees and snags with ≥ 25 cm DBH in four selected 25 × 25 m plots, all trees and snags with ≥ 7 cm DBH in four 10 × 10 m subplots, and all trees and snags in four 5 × 5 m further subplots were measured regardless of size. Totally, 490 sampling plots were included for current work, including 36 059 living trees and 7046 snags.

2.2.3 Canopy height data from spaceborne LiDAR

Spaceborne LiDAR top canopy height data for Alberta forest regions (Supplement A) were obtained from a global wall-to-wall canopy height map at 1 km spatial resolution (Simard et al., 2011). This map was produced by using the data acquired by the Geoscience Laser Altimeter System (GLAS), onboard the Ice, Cloud, and land Elevation Satellite (ICESat), in combination with several global ancillary variables, which correspond to climate and vegetation characteristics. These variables included: annual mean precipitation, precipitation seasonality, annual mean temperature, temperature seasonality, elevation, tree cover, and protection status.

2.2.4 Climatic variables

Climate data for Alberta forests were derived from the program ClimateWNA 4.70 (Wang et al., 2012). This program uses baseline climate data derived from monthly precipitation and temperature grids (Daly et al., 2008) based on interpolated climate data from weather stations for the period 1961–1990. The program includes a lapse-rate based down-sampling to 1 km resolution and estimation of biologically relevant climatic variables. Based on input values for longitude and latitude of each inventory plot or each grid, we localized 10 climatic variables using the average values across

BGD

10, 19005–19044, 2013

Estimating spatial variation in Alberta forest biomass

J. Zhang et al.

Title Page

Abstract

Introduction

Conclusions

References

Tables

Figures

◀

▶

◀

▶

Back

Close

Full Screen / Esc

Printer-friendly Version

Interactive Discussion



the last 10 yr (2000–2009) to describe local climatic conditions. Ten climatic variables were as follows:

1. MAT: mean annual temperature ($^{\circ}\text{C}$),
2. MWMT: mean warmest month temperature ($^{\circ}\text{C}$),
- 5 3. MCMT: mean coldest month temperature ($^{\circ}\text{C}$),
4. MAP: mean annual precipitation (mm),
5. MSP: mean summer (May to September) precipitation (mm),
6. AHM: annual heat: moisture index $(\text{MAT} + 10)/(\text{MAP}/1000)$,
7. SHM: summer heat: moisture index $((\text{MWMT})/(\text{MSP}/1000))$,
- 10 8. DD0: degree-days below 0°C , chilling degree-days,
9. DD5: degree-days above 5°C , growing degree-days,
10. DI: dryness index $(\text{DD5}/\text{MAP})$.

2.2.5 Alberta land cover map

The wall-to-wall land cover map of Alberta (ABMIw2wLCV2000v2.1) at 30 m spatial resolution was used for identifying forest lands in the study area (Supplement B, ABMI 2012). This map is a seamless GIS vector layer with nearly a million polygons describing the spatial distribution of land cover across Alberta, circa 2000, at the 1 : 125 000 scale. It consists of a mosaic of 977 556 non-overlapping polygons of various sizes, from 0.5 ha to thousands of ha. Each polygon represents a contiguous area relatively homogeneous in terms of land cover. The map is derived by applying a semantic and spatial generalization algorithm to combine two pre-existing land-cover products: the Canadian Forest Service's Earth Observation for Sustainable Development (EOSD)

Estimating spatial variation in Alberta forest biomass

J. Zhang et al.

Title Page

Abstract

Introduction

Conclusions

References

Tables

Figures



Back

Close

Full Screen / Esc

Printer-friendly Version

Interactive Discussion



map of the forested region, and Agriculture Agri-Food Canada's map of the agricultural zone. This map consists of 11 land cover classes, including waters, snow/ice, rock/rubble, exposed land, developed, shrubland, grassland, agriculture, coniferous forest, broadleaf forest, and mixed forest.

5 2.2.6 Alberta natural region and subregion classification

To compare how tree biomass carbon stock varies in different forest regions, we used Alberta natural regions (NRs) and natural subregions (NSRs) classification system (Alberta Natural Regions Committee, 2006) as the basis for our comparisons. In Alberta, this system has supplied for the provincial natural resource management activities since the 1970s. The current version of this system consists of 6 NRs and 21 NSRs. NRs, the largest mapped ecological units in this system, are defined geographically on the basis of landscape patterns, notably vegetation, soils and physiographic features. NSRs, subdivisions of a NR, are generally characterized by vegetation, climate, elevation, and latitudinal or physiographic differences within a given NR.

15 2.3 Data analysis

2.3.1 Estimation of aboveground biomass

Aboveground biomass was estimated for each individual tree in all ground inventory plots using DBH- and height-based biomass allometric equations and tree species-specific parameters provided by Lambert et al. (2005) and Ung et al. (2008). These equations were derived from thousands of trees sampled across Canada and allow the calculation of tree biomass (foliage, branches, stem bark, and stem wood) based on DBH measurements (for details see Lambert et al., 2005 and Ung et al., 2008). The form of the allometric equation is as follows:

$$Y = \beta_1 D^{\beta_2} H^{\beta_3}, \quad (1)$$

Estimating spatial variation in Alberta forest biomass

J. Zhang et al.

Title Page

Abstract

Introduction

Conclusions

References

Tables

Figures

◀

▶

◀

▶

Back

Close

Full Screen / Esc

Printer-friendly Version

Interactive Discussion



where Y is the biomass component of interest, diameter (D) is measured on each tree, height (H) is measured on a subsample trees in each plot, and β_1 , β_2 and β_3 are parameters. For trees with missing height measure, the heights are estimated from local species-specific height-diameter equations developed by Huang et al. (2009).

Total aboveground biomass of each PSP was summed up from all trees in each plot. Total aboveground biomass of each ABMI site was summed up from three parts: the biomass per hectare of trees ≥ 25 cm DBH in the 25×25 m plots, the biomass per hectare of trees 7–25 cm DBH in 10×10 m subplots, and the biomass per hectare of trees < 7 cm DBH in 5×5 m subplots.

2.3.2 Estimation of belowground biomass

Since belowground data were not measured at all sites, we estimated belowground tree root biomass using the following regression equation developed for boreal forests by Cairns et al. (1997):

$$\text{BGB} = e^{-1.0587+0.8836 \times \ln(\text{AGB})+0.1874} \quad (2)$$

where BGB is the belowground biomass (coarse and fine roots), and AGB is the aboveground biomass.

2.3.3 Estimation of debris biomass

Our aboveground biomass estimates included standing dead trees. However, there was no inventory data on down and dead woody material (fine and coarse woody debris) for most of our study plots. To estimate debris biomass, we calculated the ratios of debris biomass (fine and coarse woody debris) to above-ground biomass for 90 study sites across Canada's forest regions (Shaw et al., 2005). The average ratio of debris biomass to above ground biomass was 5%, which was used to estimate the debris biomass in the plots.

BGD

10, 19005–19044, 2013

Estimating spatial variation in Alberta forest biomass

J. Zhang et al.

Title Page

Abstract

Introduction

Conclusions

References

Tables

Figures

◀

▶

◀

▶

Back

Close

Full Screen / Esc

Printer-friendly Version

Interactive Discussion



Estimating spatial variation in Alberta forest biomass

J. Zhang et al.

Title Page

Abstract

Introduction

Conclusions

References

Tables

Figures



Back

Close

Full Screen / Esc

Printer-friendly Version

Interactive Discussion



Cross-validation analysis was used to evaluate effective parameters for these interpolation methods. The results with the highest R^2 in cross-validation analysis were finally selected. Kriging, cokriging and inverse distance weighting were calculated using the geostatistics software GS+ (<http://www.gammadesign.com>), and thin-plate smoothing splines were calculated using the R package “fields” (Fields Development Team 2006). After producing the biomass map for Alberta, we used the Alberta Natural Region GIS map to crop grassland and parkland regions, and the Alberta land cover map to crop the areas with the following land cover classes: waters, snow/ice, rock/rubble, exposed land, shrubland, grassland, and agriculture.

Non-spatial and spatial regression models: Two steps were used to estimate biomass stocks using canopy height data from spaceborne LiDAR. First, we used the data from the 1968 forest inventory plots to establish the relationships between total tree biomass and ground-measured top canopy height, climatic variables, elevations, latitudes, and longitudes. Both non-spatial multiple regression models (ordinary least squares, OLS) and spatial linear models (here “spatial simultaneous autoregressive error models (SARs)”, Kissling and Carl, 2008) were used. The SARs models allow the inclusion of the residual spatial autocorrelation of the data. Among these predictors, some of them were highly correlated. To reduce the risk of multi-collinearity, we used VIF (Variance Inflation Factors) for variable selection. The variables with $VIF > 10$, which represent high collinearity, were removed. The “best” model is selected based on lower AIC (Akaike information criterion) and higher R^2 . Second, we applied this selected model to estimate tree biomass density ($Mgha^{-1}$) using LiDAR canopy height and other environmental variables in each 1×1 km grid in Alberta forest regions. All the analyses were done using R language (R Core Team, 2013), and SARs were calculated using the R package “spdep” (version 0.5–33).

Decision-tree based modelling with random forests algorithm (RF): The method is an ensemble machine learning technique, where many decision trees are constructed based on random sub-sampling of the given data set (Breiman, 2001). As one of tree-based models, RF performs recursive partitioning of data sets, and makes no

assumptions regarding the distribution of the input data. RF can capture non-linear relationships between the response variable (tree biomass in our study) and predictor variables (canopy height, climate, and other environmental variable in our study), and can deal with correlated variables while producing a low generalization error (Breiman, 2001). In addition, RF can be used to rank the importance of variables in a regression or classification problem in a natural way. In our study, this method was used to detect the relative importance of climate, topography and other environmental variables, and predict the distributions of forest biomass. All analyses were implemented in the R package “randomForest” (Liaw and Wiener, 2002).

2.3.7 Model accuracy assessment

Three well-known error statistics were calculated to measure the difference between the observed and predicted forest biomass, including mean absolute error (MAE), root mean-square error (RMSE), and the normalized root-mean-square error (NRMSE). They are defined as:

$$MAE = \frac{1}{N} \sum_{i=1}^N |PRE_i - OBS_i|$$

$$RMSE = \sqrt{\frac{1}{N} \sum_{i=1}^N (PRE_i - OBS_i)^2}$$

$$NRMSE = 100 \times \frac{RMSE}{OBS_{max} - OBS_{min}}$$

where PRE_i and OBS_i denote the i th predicted and observed values, respectively. NRMSE is the RMSE divided by the range of observed values of a variable being predicted. The value is often expressed as a percentage, where lower values indicate less residual variance.

Estimating spatial variation in Alberta forest biomass

J. Zhang et al.

Title Page

Abstract

Introduction

Conclusions

References

Tables

Figures



Back

Close

Full Screen / Esc

Printer-friendly Version

Interactive Discussion



3 Results

3.1 Biomass variations among forest inventory plots

Direct field measurements yielded an estimate of $172.33 \pm 101.23 \text{ Mg ha}^{-1}$ for the density of total tree biomass for Alberta forests, with a range from nearly zero to $613.82 \text{ Mg ha}^{-1}$ in these inventory plots. For the PSP inventory plots only, the average biomass density estimate was $198.13 \text{ Mg ha}^{-1}$, which is more than double the density of 94.50 Mg ha^{-1} for the ABMI inventory plots ($P < 0.0001$, two-sample t test).

For forest inventory plots at the species level, the average biomass density estimates for lodgepole pine, trembling aspen, black spruce and white spruce were 50.86, 44.55, 23.95, and 33.61 Mg ha^{-1} , respectively.

Based on our inventory data, we detected a large variation of total tree biomass along forest stand ages (Fig. 2a and b). We classified these plots into four forest age groups (young, immature, mature, and old-growth forests). Old-growth forests (age > 120 yr) and mature forests (80–120 yr) had the highest average tree biomass, 214.32 and $187.96 \text{ Mg ha}^{-1}$ respectively. The average biomass density in immature forests (50–80 yr) was $121.04 \text{ Mg ha}^{-1}$, and the average in young forests (< 50 yr) was 63.97 Mg ha^{-1} .

3.2 Biomass-environment correlations

The results of Pearson correlations after accounting for spatial autocorrelation showed that total tree biomass of each ground plot was strongly correlated with observed canopy height (R^2 : 0.752, $P < 0.001$, Table 1, Fig. 2c). Elevation also showed significant correlations with total biomass. Among the 10 climatic variables, most variables were highly correlated with others. MCMT (mean coldest month temperature) and DD0 (degree-days below 0°C) had relatively high correlations with total tree biomass.

BGD

10, 19005–19044, 2013

Estimating spatial variation in Alberta forest biomass

J. Zhang et al.

Title Page

Abstract

Introduction

Conclusions

References

Tables

Figures

◀

▶

◀

▶

Back

Close

Full Screen / Esc

Printer-friendly Version

Interactive Discussion



3.3 Biomass estimates from four different approaches

We compared the results of four approaches for biomass estimation (Table 2, Fig. 3). The RF approach provided the best accuracy for biomass estimation ($R^2 = 0.62$, MAE = 48.43 Mg ha⁻¹, RMSE = 64.18 Mg ha⁻¹, NRMSE = 62.25 %) (Table 2). Non-spatial and spatial regression models performed nearly as well as the RF approach, while spatial interpolation had the poorest estimate ($R^2 = 0.29$, MAE = 66.77 Mg ha⁻¹, RMSE = 85.08 Mg ha⁻¹, NRMSE = 84.20 %). The total tree biomass estimation from spatial interpolation was 5.07×10^9 Mg, which was much larger than the estimates from spatial regression model (3.01×10^9 Mg) and RF (3.11×10^9 Mg) (Fig. 3).

Using the RF approach, the estimates of total tree biomass across Alberta forest regions was 3.11×10^9 Mg (Table 3, Fig. 3). The average biomass density in each 1 × 1 km grid was 77.59 Mg ha⁻¹. Nearly 25 % of total forest areas had biomass densities between 40–60 Mg ha⁻¹, and around 11 % of total forest areas had biomass densities larger than 150 Mg ha⁻¹ (Fig. 4).

Total tree biomass in the boreal region (RF approach) was about 1.81×10^9 Mg, accounting for 58.17 % of total tree biomass in Alberta forests among the four main natural regions of Alberta (Table 3). The estimated biomass was about 0.76×10^9 Mg in the Foothills, 0.50×10^9 Mg in the Rocky Mountain, and 0.03×10^9 Mg in the Canadian Shield. Among the fourteen natural subregions (Table 3), Central Mixedwood had the highest total tree biomass (0.91×10^9 Mg), followed by Lower Foothills, Subalpine and Lower Boreal Highlands.

Compared with the average biomass of inventory plots (172.33 Mg ha⁻¹, Table 3), Foothills and Rocky Mountain natural regions had higher biomass densities of 192.57 and 190.80 Mg ha⁻¹ respectively, than the others. The averages of biomass density also varied greatly in different subregions, from 22.11 Mg ha⁻¹ in Boreal Subarctic to 197.01 Mg ha⁻¹ in Lower Foothills.

Among three major land cover types in Alberta forests (Supplement B), coniferous forests stored 1.57×10^9 Mg biomass, accounting for 50.47 % of total tree biomass in

BGD

10, 19005–19044, 2013

Estimating spatial variation in Alberta forest biomass

J. Zhang et al.

Title Page

Abstract

Introduction

Conclusions

References

Tables

Figures

⏪

⏩

◀

▶

Back

Close

Full Screen / Esc

Printer-friendly Version

Interactive Discussion



Alberta forests, and broadleaf forests and mixed forests stored 0.84×10^9 and 0.23×10^9 Mg biomass, respectively.

3.4 Biomass estimates of major tree species

Three major tree species, lodgepole pine, trembling aspen and white spruce, stocked about 1.91×10^9 Mg biomass in total, accounting for 61 % of total biomass in Alberta forests (Fig. 5, Table 4). Total biomass of lodgepole pine was 0.76×10^9 Mg, and 84 % of which is distributed in the Foothills and Rocky Mountain regions. For trembling aspen, total biomass was 0.68×10^9 Mg, of which 78 % is distributed in the Boreal region. For white spruce, total biomass was 0.47×10^9 Mg, of which 58 % is distributed in the Boreal region.

3.5 Variable importance on biomass distribution

Using the RF, we also assessed the importance of various predictor variables on biomass distribution (Fig. 6). Canopy height, which was directly related to biomass, had major influence on biomass distribution at both stand and species levels. Elevation was also significantly correlated with biomass distribution. Each of the ten climatic variables had relatively weak effects on biomass distribution at the stand level. The three major tree species showed differing relationships with climatic variables. For lodgepole pine, DD0, MCMT and DD5 had stronger impacts on biomass than the other climatic variables. For trembling aspen, four climatic variables related to site dryness, including MAP, MSP, DI and AHM, were much more important than the other climatic variables. For white spruce, MSP and DD5 had slightly stronger impacts on biomass than others.

4 Discussion

We reported a large-scale spatially explicit dataset for presenting biomass storage in Alberta's forest regions, derived from a combination of forest inventory data from 1968

Estimating spatial variation in Alberta forest biomass

J. Zhang et al.

Title Page

Abstract

Introduction

Conclusions

References

Tables

Figures



Back

Close

Full Screen / Esc

Printer-friendly Version

Interactive Discussion



Estimating spatial variation in Alberta forest biomass

J. Zhang et al.

Title Page

Abstract

Introduction

Conclusions

References

Tables

Figures



Back

Close

Full Screen / Esc

Printer-friendly Version

Interactive Discussion



plots, spaceborne LiDAR data, land cover classification, climate and other environmental variables. Using decision-tree based approach with random forests algorithm, the total biomass stock in the study region was estimated to be 3.11×10^9 Mg, which is very close to Bonnor's (1985) estimate (3.15×10^9 Mg) based on volume inventory data (Table 5). The average biomass density was 77.59 Mg ha^{-1} , which is close to Bonnor's (1985) estimate (77.52 Mg ha^{-1}). This study showed that the combination of multisource data could be a cost-effective way to estimate the amounts, distributions and variations of biomass carbon stocks across large regions with good accuracy.

4.1 Comparison with previous biomass estimations

We summarized previous studies on boreal forest biomass estimation at different spatial extents (Table 5). At the global scale, total biomass estimates of boreal forests ranged from 111.32×10^9 Mg (Cao and Woodward, 1998) to 176×10^9 Mg (Dixon et al., 1994). In Canada forests, total biomass estimates varied from 29.02×10^9 Mg (Kurz and Apps, 1999) to 56.34×10^9 Mg (Penner et al., 1997). In Alberta forest regions, our estimate (3.11×10^9 Mg) using decision-tree approach was very similar to the estimate of Bonnor (1985), but smaller than the estimate of Penner et al. (1997) (Table 5). Compared with other studies, our estimate of mean biomass density was close to several studies at global and regional scales, while it also had a large difference from the estimates of some other studies, such as Dixon et al. (1994), Pan et al. (2011) and Penner et al. (1997) (Table 5). Clearly, there is a huge disagreement among different estimates, but it is hard to compare them because of different data sources, estimation methodologies, and time periods of data collection.

Compared with these previous studies, our current study has several improvements and advantages: (1) multisource data: we combined the data from ground-based inventory, LiDAR, land cover, climate and other environmental variables. Many previous studies used only a single data source, and did not consider the role of climate and other variables in their analyses; (2) large, relative unbiased sample plots on forest inventory: the lack of sufficient and unbiased sample plots has been identified as a ma-

the ability to accurately predict. Although some techniques have been developed to consider multiple variables into spatial interpolation, they are still not available in most of widely used geostatistics software. Furthermore, for most of the PSP plots placed on upland sites, these are intermixed with a fine-scale mosaic of forested peatlands with much lower biomass.

As a nonparametric approach, RF has shown some outstanding advantages in our study. This is also supported by previous studies for soil mapping (e.g., Grimm et al., 2008), biomass mapping in forests (Baccini et al., 2004; Neumann et al., 2011; Asner et al., 2013) and seafloor (Wei et al., 2010), and bird distribution modeling (Kreakie et al., 2012). The advantages of random forests include: ability of modeling high dimensional non-linear relationships, handling of categorical and continuous predictors, resistance to overfitting, relative robustness with respect to noise features, unbiased measure of error rate, and measures of variable importance (Breiman, 2001; Grimm et al., 2008). Therefore, by combining different predictor variables, this approach has a great potential for improving the estimation of forest biomass at regional and global scales.

4.3 Canopy height as an important determinant of biomass distribution

It is well known that canopy height is a critical indicator of forest site quality and growth potential (Kimmins 2004; Fang et al., 1998). Also, canopy height is highly related to stand age and forest disturbance, both of which affect directly forest biomass and productivity. Using a large sample of forest inventory data, we detected a significant relationship between biomass and canopy height (Table 1, Fig. 2). The assessment of variable importance using the RF approach also showed that canopy height was the most important variable for determining biomass distribution in our study area (Fig. 6). However, canopy height has been rarely used in previous estimations of regional-scale biomass and carbon storage, because this information was not available over large areas in the past. The development of remote sensing techniques, especially LiDAR, has provided high or medium resolution canopy height products at both regional and

BGD

10, 19005–19044, 2013

Estimating spatial variation in Alberta forest biomass

J. Zhang et al.

Title Page

Abstract

Introduction

Conclusions

References

Tables

Figures



Back

Close

Full Screen / Esc

Printer-friendly Version

Interactive Discussion



global scales (Lefsky et al., 2010; Simard et al., 2011), and provides an opportunity to obtain more accurate estimates of biomass and carbon storage over large areas. For example, based on 1 km resolution spaceborne LiDAR canopy height data (Lefsky et al., 2010) and ground inventory data, Saatchi et al. (2011) mapped the total biomass carbon stocks in tropical regions across three continents with a forest area of 2.5 billion ha. Therefore, the integration of plot-based measurements of biomass with remotely-sensed observations of canopy height can provide a cost-effective method for large-scale mapping. In addition, the LiDAR canopy height data are closely related to logging and fire history, allowing recently logged and burned sites to be more accurately accounted for in biomass carbon estimation.

4.4 Biomass–climate relationships

Understanding biomass–climate relationships is important for biomass and carbon mapping under past and current conditions as well as for making future projections under a changing climate. Although climatic variables have been used in biomass estimations, we know relatively little about how climate influences variation in biomass stocks (Stegen et al., 2011). In this study, we found that climate explained relatively little of the observed, stand-level variation in Alberta forest biomass (Table 1, Fig. 6), which is consistent with Stegen et al. (2011)’s findings on biomass–climate relationships in temperate and tropical forests. Disturbance regime is likely a better predictor of biomass but these are often difficult to map at regional scales. Because canopy height is strongly influenced by time since the last stand-replacing disturbance (e.g., fire), high-resolution LiDAR data can play an important role in estimating biomass and productivity at regional and national scales.

Species-level analysis on biomass–climate relationships showed that tree species respond differently to how climate affects biomass distribution (Fig. 6). For lodgepole pine, chilling degree-days (DD0), mean coldest month temperature (MCMT) and growing degree-days (DD5) played a more important role than other climatic variables. This strong correlation with degree-days is also supported by previous studies on lodgepole

BGD

10, 19005–19044, 2013

Estimating spatial variation in Alberta forest biomass

J. Zhang et al.

Title Page

Abstract

Introduction

Conclusions

References

Tables

Figures



Back

Close

Full Screen / Esc

Printer-friendly Version

Interactive Discussion



pine site index study in Alberta forests (Monserud et al., 2006). For trembling aspen, four drought-related variables (MAP, MSP, DI and AHM) were much more important than other climatic variables, which confirm previous studies about drought-related impacts on aspen stand dynamics (e.g., Hogg et al., 2008; Michaelian et al., 2011).

5 4.5 Total carbon stocks in Alberta forests

To map total carbon (C) storage of Alberta forests, we also need high quality data on soil C in our study area. Boreal forest ecosystems contain vast C stocks in soil, most of which is found in peatlands and permafrost soils (Deluca and Boisvenue, 2012). Soil C in boreal ecosystems has been reported to account for about five times the total C in the standing biomass or about 85 % of the total biome C (Malhi et al., 1999). The large-scale estimation of soil C stocks poses many challenges (Liu et al., 2013), and was thus not specifically included in the current study. However, using the recent data set of North American soil organic carbon content at 0.25° resolution (Liu et al., 2013), we estimated the total soil carbon stocks in Alberta's forests to be about 11.8×10^9 Mg, with a high proportion in peatlands (Vitt et al., 2000). Our estimate of biomass carbon (1.56×10^9 Mg, 50 % of total tree biomass) only accounted for 12 % of total carbon stocks (13.36×10^9 Mg), while soil carbon accounted for 88 %. Clearly, more efforts are needed to better understand spatial and temporal variation of biomass and soil carbon stocks in the boreal forest.

20 **Supplementary material related to this article is available online at**
[http://www.biogeosciences-discuss.net/10/19005/2013/](http://www.biogeosciences-discuss.net/10/19005/2013/bgd-10-19005-2013-supplement.pdf)
[bgd-10-19005-2013-supplement.pdf](http://www.biogeosciences-discuss.net/10/19005/2013/bgd-10-19005-2013-supplement.pdf).

Acknowledgements. We thank Alberta Ministry of Environment and Sustainable Resource Development, Alberta Biodiversity Monitoring Institute (ABMI), Weyerhaeuser Canada, and West Fraser for graciously granting us access to their datasets. This work was supported by Alberta

Estimating spatial variation in Alberta forest biomass

J. Zhang et al.

Title Page

Abstract

Introduction

Conclusions

References

Tables

Figures



Back

Close

Full Screen / Esc

Printer-friendly Version

Interactive Discussion



References

5 ABMI (Alberta Biodiversity Monitoring Institute): ABMI wall-to-wall Land Cover Map circa: Version 2.1: Metadata, Alberta Biodiversity Monitoring Institute, Edmonton, Canada, available at: www.ABMI.ca, 2012.

10 Alberta Natural Regions Committee: Natural regions and subregions of Alberta (compiled by D. J. Downing and W. W. Pettapiece). Government of Alberta, Publication No. T/852, available at: http://www.tpr.alberta.ca/parks/heritageinfocentre/docs/NRSRcomplete%20May_06.pdf, 2006.

15 Allen, C. D., Macalady, A. K., Chenchouni, H., Bachelet, D., McDowell, N., Vennetier, M., Kizberger, T., Rigling, A., Breshears, D. D., Hogg, E. H., Gonzalez, P., Fensham, R., Zhang, Z., Castro, J., Demidova, N., Lim, J. H., Allard, G., Running, S. W., Semerci, A., and Cobb, N.: A global overview of drought and heat-induced tree mortality reveals emerging climate change risks for forests, *Forest Ecol. Manag.*, 259, 660–684, 2010.

20 Asner, G. P., Mascaro, J., Anderson, C., Knapp, D. E., Martin, R. E., Kennedy-Bowdoin, T., van Breugel, M., Davies, S., Hall, J. S., Muller-Landau, H. C., Potvin, C., Sousa, W., Wright, J., and Bermingham, E.: High-fidelity national carbon mapping for resource management and REDD+, *Carb. Bal. Manage.*, 8, 1–14, 2013.

Baccini, A., Friedl, M. A., Woodcock, C. E., and Warbington, R.: Forest biomass estimation over regional scales using multisource data, *Geophys. Res. Lett.*, 31, L10501, doi:10.1029/2004GL019782, 2004.

25 Bini, M. L., Diniz-Filho, J. A. F., Rangel, T. F. L. V. B., Akre, T. S. B., Albaladejo, R. G., Albuquerque, F. S., Aparicio, A., Araújo M. B., Baselga, A., Beck, J., Isabel Bellocq, M., Böhning-Gaese, K., Borges, P. A. V., Castro-Parga, I., Khen Chey, V., Chown, S. L., De Marco, J. P., Dobkin, D. S., Ferrer-Castán D., Field, R., Filloy, J., Fleishman, E., Gómez J. F., Hortal, J., Iverson, J. B., Kerr, J. T., Daniel Kissling, W., Kitching, I. J., León-Cortés J. L., Lobo, J. M., Montoya, D., Morales-Castilla, I., Moreno, J. C., Oberdorff, T., Olalla-Tárraga M.Á., Pausas, J. G., Qian, H., Rahbek, C., Rodríguez M.Á., Rueda, M., Ruggiero, A.,

Estimating spatial variation in Alberta forest biomass

J. Zhang et al.

Title Page

Abstract

Introduction

Conclusions

References

Tables

Figures



Back

Close

Full Screen / Esc

Printer-friendly Version

Interactive Discussion



Estimating spatial variation in Alberta forest biomass

J. Zhang et al.

[Title Page](#)

[Abstract](#)

[Introduction](#)

[Conclusions](#)

[References](#)

[Tables](#)

[Figures](#)

[◀](#)

[▶](#)

[◀](#)

[▶](#)

[Back](#)

[Close](#)

[Full Screen / Esc](#)

[Printer-friendly Version](#)

[Interactive Discussion](#)



Sackmann, P., Sanders, N. J., Carina Terribile, L., Vetaas, O. R., and Hawkins, B. A.: Co-efficient shifts in geographical ecology: an empirical evaluation of spatial and non-spatial regression, *Ecography*, 32, 193–204, 2009.

Blackard, J. A., Finco, M. V., Helmer, E. H., Holden, G. R., Hoppus, M. L., Jacobs, D. M.,
5 Lister, A. J., Moisen, G. G., Nelson, M. D., Riemann, R., Ruefenacht, B., Salajanu, D., Wey-
ermann, D. L., Winterberger, K. C., Brandeis, T. J., Czaplowski, R. L., McRoberts, R. E.,
Patterson, P. L., and Tymcio, R. P.: Mapping US forest biomass using nationwide forest in-
ventory data and moderate resolution information, *Remote Sens. Environ.*, 112, 1658–1677,
2008.

10 Bonnor, G. M.: Inventory of forest biomass in Canada. Can. For. Serv., Petawawa Nat. For.
Institute, Petawawa, Ontario, 1985.

Botkin, D. B. and Simpson, L. G.: Biomass of the North-American boreal forest – a step toward
accurate global measures, *Biogeochemistry*, 9, 161–174, 1990.

Breiman, L.: Random forests, *Mach. Learn.*, 45, 5–32, 2001.

15 Brown, S.: Estimating Biomass and Biomass Change of Tropical Forests: a primer, *FAO
Forestry Paper*, 134, FAO, Rome, 1997.

Brown, S.: Measuring carbon in forests: current status and future challenges, *Environ. Pollut.*,
116, 363–372, 2002.

20 Cairns, M. A., Brown, S., Helmer, E. H., and Baumgardner, G. A.: Root biomass allocation in
the world's upland forests, *Oecologia*, 111, 1–11, 1997.

Cao, M. and Woodward, F. I.: Net primary and ecosystem production and carbon stocks of
terrestrial ecosystems and their responses to climate change, *Glob. Change Biol.*, 4, 185–
198, 1998.

25 Ciais, P., Tans, P. P., Trolier, M., White, J. W. C., and Francey, R. J.: A large Northern Hemisphere
terrestrial CO₂ sink indicated by the ¹³C/¹²C ratio of atmospheric CO₂, *Science*, 269, 1098–
1102, 1995.

Daly, C., Halbleib, M., Smith, J. I., Gibson, W. P., Doggett, M. K., Taylor, G. H., Curtis, J., and
Pasteris, P. P.: Physiographically sensitive mapping of climatological temperature and precip-
itation across the conterminous United States, *Int. J. Climatol.*, 28, 2031–2064, 2008.

30 Deluca, T. H. and Boisvenue, C.: Boreal forest soil carbon: distribution, function and modelling,
Forestry, 85, 161–184, 2012.

Dixon, R. K., Brown, S., Houghton, R. A., Solomon, A. M., Trexler, M. C., and Wisniewski, J.:
Carbon pools and flux of global forest ecosystems, *Science*, 263, 185–189, 1994.

Estimating spatial variation in Alberta forest biomass

J. Zhang et al.

Title Page

Abstract

Introduction

Conclusions

References

Tables

Figures



Back

Close

Full Screen / Esc

Printer-friendly Version

Interactive Discussion



- Dungan, J. L.: Spatial prediction of vegetation quantities using ground and image data, *Int. J. Remote Sens.*, 19, 267–285, 1998.
- Fang, J. Y., Wang, G. G., Liu, G. H. and Xu, S. L.: Forest biomass of China: an estimate based on the biomass–volume relationship, *Ecol. Appl.*, 8, 1084–1091, 1998.
- 5 Fields Development Team: *Fields: Tools for Spatial Data*, National Center for Atmospheric Research, Boulder, CO, available at: <http://www.image.ucar.edu/GSP/Software/Fields>, 2006.
- Freeman, E. A. and Moisen, G. G.: Evaluating kriging as a tool to improve moderate resolution maps of forest biomass, *Environ. Monit. Assess.*, 128, 395–410, 2007.
- 10 Fyles, L. H., Shaw, C. H., Apps, M. J., Karjalainen, T., Stocks, B. J., Running, S. W., Kurz, W. A., Weyerhaeuser, G., and Jarvis, P. G.: The role of boreal forests and forestry in the global carbon budget: a synthesis. In: Shaw, C. H., and Apps, M. J. (eds.). *The Role of Boreal Forests and Forestry in the Global Carbon Budget: Proceedings of IBFRA Meeting, May 8–12, 2000*, Edmonton, Alberta, Canadian Forest Service, Edmonton, Canada, 1–21, 2002.
- 15 Grimm, R., Behrens, T., Marker, M., and Elsenbeer, H.: Soil organic carbon concentrations and stocks on Barro Colorado Island – Digital soil mapping using Random Forests analysis, *Geoderma*, 146, 102–113, 2008.
- Hall, R. J., Skakun, R. S., Beaudoin, A., Wulder, M. A., Arsenault, E. J., Bernier, P. Y., Guindon, L., Luther, J. E., and Gillis, M. D.: Approaches for Forest Biomass Estimation and Mapping in Canada, DVD 1988–1991 in *Proc. 2010, IEEE International Geoscience and Remote Sensing Symposium (IGARSS 2010)*, Honolulu, Hawaii, USA, 25–30 July, 2010, 2010.
- 20 Harden, J. W., Trumbore, S. E., Stocks, B. J., Hirsch, A., Gower, S. T., O'Neill, K. P., and Kasischke, E. S.: The role of fire in the boreal carbon budget, *Glob. Change Biol.*, 6, 174–184, 2000.
- Hogg, E. H., Brandt, J. P., and Michaelian, M.: Impacts of a regional drought on the productivity, dieback, and biomass of western Canadian aspen forests, *Can. J. Forest Res.*, 38, 1373–1384, 2008.
- 25 Houghton, R. A., Lawrence, K. T., Hackler, J. L., and Brown, S.: The spatial distribution of forest biomass in the Brazilian Amazon: a comparison of estimates, *Glob. Change Biol.*, 7, 731–746, 2001.
- 30 Houghton, R. A., Hall, F., and Goetz, S. J.: Importance of biomass in the global carbon cycle, *J. Geophys. Res.-Biogeo.*, 114, G00E03, doi:10.1029/2009JG000935, 2009.

Estimating spatial variation in Alberta forest biomass

J. Zhang et al.

Title Page

Abstract

Introduction

Conclusions

References

Tables

Figures

◀

▶

◀

▶

Back

Close

Full Screen / Esc

Printer-friendly Version

Interactive Discussion



Huang, S. M., Meng, S. X., and Yang, Y. Q.: A Growth and Yield Projection System (GYPSY) for Natural and Post-Harvest Stands in Alberta, Technical Report Pub. No.: T/216; Alberta Sustainable Resource Development, Edmonton, Canada, 2009.

IPCC (Intergovernmental Panel on Climate Change): Climate Change 2007: The Physical Science Basis, Cambridge University Press, Cambridge, UK, 2007.

Jarvis, P. G., Saugier, B., and Schulze, E. D.: Productivity of boreal forests, in: Terrestrial Global Productivity, edited by: Roy, J., Saugier, B. and Mooney, H. A., Academic Press, San Diego, 211–244, 2001.

Ketterings, Q. M., Coe, R., van Noordwijk, M., Ambagau, Y., and Palm, C. A.: Reducing uncertainty in the use of allometric biomass equations for predicting above-ground tree biomass in mixed secondary forests, *Forest Ecol. Manag.*, 146, 199–209, 2001.

Kimmins, J. P.: *Forest Ecology: a Foundation for Sustainable Forest Management and Environmental Ethics in Forestry*, 3rd edn., Prentice Hall, NJ, USA, 2004.

Kissling, W. D. and Carl, G.: Spatial autocorrelation and the selection of simultaneous autoregressive models, *Global. Ecol. Biogeogr.*, 17, 59–71, 2008.

Kreakie, B. J., Fan, Y., and Keitt, T. H.: Enhanced migratory waterfowl distribution modeling by inclusion of depth to water table data, *PLoS One*, 7, e30142, doi:10.1371/journal.pone.0030142, 2012.

Krige, D. G.: A statistical approach to some mine valuations and allied problems at the Witwatersrand, Master's thesis of the University of Witwatersrand, 1951.

Kurz, W. A. and Apps, M. J.: A 70 yr retrospective analysis of carbon fluxes in the Canadian forest sector, *Ecol. Appl.* 9, 526–547, 1999.

Kurz, W. A., Dymond, C. C., Stinson, G., Rampley, G. J., Neilson, E. T., Carroll, A. L., Ebata, T., and Safranyik, L.: Mountain pine beetle and forest carbon feedback to climate change, *Nature*, 452, 987–990, 2008.

Lambert, M. C., Ung, C. H., and Raulier, F.: Canadian national tree aboveground biomass equations, *Can. J. Forest Res.*, 35, 1996–2018, 2005.

Lefsky, M. A.: A global forest canopy height map from the moderate resolution imaging spectroradiometer and the geoscience laser altimeter system, *Geophys. Res. Lett.*, 37, L15401, doi:10.1029/2010GL043622, 2010.

Liaw, A. and Wiener, M.: Classification and regression by random forest, *R News*, 2, 18–22, 2002.

Estimating spatial variation in Alberta forest biomass

J. Zhang et al.

Title Page

Abstract

Introduction

Conclusions

References

Tables

Figures

◀

▶

◀

▶

Back

Close

Full Screen / Esc

Printer-friendly Version

Interactive Discussion



- Liski, J. and Kauppi, P.: Forest Resources of Europe, CIS, North America, Australia, Japan and New Zealand (Industrialized Temperate-Boreal Countries), United Nations-Economic Commission for Europe Food and Agriculture Organization Contributions to the Global Forest Resources Assessment 2000, United Nations, New York, 155–171, 2000.
- 5 Liu, S., Wei, Y., Post, W. M., Cook, R. B., Schaefer, K., and Thornton, M. M.: The Unified North American Soil Map and its implication on the soil organic carbon stock in North America, *Biogeosciences*, 10, 2915–2930, doi:10.5194/bg-10-2915-2013, 2013.
- Malhi, Y., Baldocchi, D. D., and Jarvis, P. G.: The carbon balance of tropical, temperate and boreal forests, *Plant Cell Environ.*, 22, 715–740, 1999.
- 10 Michaelian, M., Hogg, E. H., Hall, R. J., and Arseneault, E.: Massive mortality of aspen following severe drought along the southern edge of the Canadian boreal forest, *Glob. Change Biol.*, 17, 2084–2094, 2011.
- Monserud, R. A., Huang, S., and Yang, Y.: Biomass and biomass change in lodgepole pine stands in Alberta, *Tree Physiol.*, 26, 819–831, 2006.
- 15 Myneni, R. B., Dong, J., Tucker, C. J., Kaufmann, R. K., Kauppi, P. E., Liski, J., Zhou, L., Alexeyev, V., and Hughes, M. K.: A large carbon sink in the woody biomass of northern forests, *P. Natl. Acad. Sci. USA*, 98, 14784–14789, 2001.
- Neumann, M., Saatchi, S. S., Ulander, L. M. H., and Fransson, J. E. S.: Parametric and non-parametric forest biomass estimation from PolInSAR data, in: *Geoscience and Remote Sensing Symposium (IGARSS)*, 2011 IEEE International, 420–423, 2011.
- 20 Pan, Y., Birdsey, R. A., Fang, J., Houghton, R., Kauppi, P. E., Kurz, W. A., Phillips, O. L., Shvidenko, A., Lewis, S. L., Canadell, J. G., Ciais, P., Jackson, R. B., Pacala, S. W., McGuire, A. D., Piao, S., Rautiainen, A., Sitch, S., and Hayes, D.: A large and persistent carbon sink in the world's forests, *Science*, 333, 988–993, 2011.
- 25 Penner, M., Power, K., Muhairwe, C., Tellier, R., and Wang, Y.: Canada's forest biomass resources: deriving estimates from Canada's forest inventory, Pacific Forestry Centre Victoria, Canada, 1997.
- Popescu, S. C., Zhao, K., Neuenschwander, A., and Lin, C.: Satellite LiDAR vs. small footprint airborne LiDAR: comparing the accuracy of aboveground biomass estimates and forest structure metrics at footprint level, *Remote Sens. Environ.*, 115, 2786–2797, 2011.
- 30 R Core Team: R: A language and environment for statistical computing. R Foundation for Statistical Computing, Vienna, Austria, available at: <http://www.R-project.org>, 2013.

Estimating spatial variation in Alberta forest biomass

J. Zhang et al.

Title Page

Abstract

Introduction

Conclusions

References

Tables

Figures

◀

▶

◀

▶

Back

Close

Full Screen / Esc

Printer-friendly Version

Interactive Discussion



- Saatchi, S. S., Harris, N. L., Brown, S., Lefsky, M., Mitchard, E. T. A., Salas, W., Zutta, B. R., Buermann, W., Lewis, S. L., Hagen, S., Petrova, S., White, L., Silman, M., and Morel, A.: Benchmark map of forest carbon stocks in tropical regions across three continents, *P. Natl. Acad. Sci. USA*, 108, 9899–9904, 2011.
- 5 Schlesinger, W. H.: *Biogeochemistry: an Analysis of Global Change*, Academic Press, San Diego, 1997.
- Schroeder, P., Brown, S., Mo, J. M., Birdsey, R., and Cieszewski, C.: Biomass estimation for temperate broadleaf forests of the United States using inventory data, *Forest Sci.*, 43, 424–434, 1997.
- 10 Shaw, C., Bhatti, J. S., and Sabourin, K. J.: *An ecosystem carbon database for Canadian forests*, Canadian Forest Service, Northern Forestry Centre, Edmonton, 2005.
- Simard, M., Pinto, N., Fisher, J. B., and Baccini, A.: Mapping forest canopy height globally with spaceborne lidar, *J. Geophys. Res.-Biogeol.*, 116, G04021, doi:10.1029/2011JG001708, 2011.
- 15 Stegen, J. C., Swenson, N. G., Enquist, B. J., White, E. P., Phillips, O. L., Jorgensen, P. M., Weiser, M. D., Mendoza, A. M., and Vargas, P. N.: Variation in above-ground forest biomass across broad climatic gradients, *Global. Ecol. Biogeogr.*, 20, 744–754, 2011.
- Tans, P. P., Fung, I. Y., and Takahashi, T.: Observational Constraints on the Global Atmospheric CO₂ Budget, *Science*, 247, 1431–1438, 1990.
- 20 Ung, C. H., Bernier, P., and Guo, X. J.: Canadian national biomass equations: new parameter estimates that include British Columbia data, *Can. J. Forest Res.*, 38, 1123–1132, 2008.
- Viana, H., Aranha, J., Lopes, D., and Cohen, W. B.: Estimation of crown biomass of Pinus pinaster stands and shrubland above-ground biomass using forest inventory data, remotely sensed imagery and spatial prediction models, *Ecol. Model.*, 226, 22–35, 2012.
- 25 Vitt, D. H., Halsey, L. A., Bauer, I. E. and Campbell, C.: Spatial and temporal trends in carbon storage of peatlands of continental western Canada through the Holocene, *Can. J. Earth Sci.*, 37, 683–693, 2000.
- Wang, T., Hamann, A. Spittlehouse, D. L., and Murdock, T. Q.: ClimateWNA – High-resolution spatial climate data for western North America, *J. Appl. Meteorol. Climatol.*, 51, 16–29, 2012.
- 30 Wei, C. L., Rowe, G. T., Escobar-Briones, E., Boetius, A., Soltwedel, T., Caley, M. J., Soliman, Y., Huettmann, F., Qu, F. Y., Yu, Z. S., Pitcher, C. R., Haedrich, R. L., Wicksten, M. K., Rex, M. A., Baguley, J. G., Sharma, J., Danovaro, R., MacDonald, I. R., Nunnally, C. C., Deming, J. W., Montagna, P., Levesque, M., Weslawski, J. M., Wlodarska-Kowalczyk, M., Ingole, B. S.,

Bett, B. J., Billett, D. S. M., Yool, A., Bluhm, B. A., Iken, K., and Narayanaswamy, B. E.: Global patterns and predictions of seafloor biomass using random forests, *PloS One*, 5, e15323, doi:10.1371/journal.pone.0015323, 2010.

5 Wulder, M. A., White, J. C., Fournier, R. A., Luther, J. E., and Magnussen, S.: Spatially explicit large area biomass estimation: Three approaches using forest inventory and remotely sensed imagery in a GIS, *Sensors*, 8, 529–560, 2008.

Yemshanov, D., McKenney, D. W., and Pedlar, J. H.: Mapping forest composition from the Canadian National Forest Inventory and land cover classification maps, *Environ. Monit. Assess.*, 184, 4655–4669, 2012.

BGD

10, 19005–19044, 2013

Estimating spatial variation in Alberta forest biomass

J. Zhang et al.

Title Page

Abstract

Introduction

Conclusions

References

Tables

Figures

⏪

⏩

◀

▶

Back

Close

Full Screen / Esc

Printer-friendly Version

Interactive Discussion



Estimating spatial variation in Alberta forest biomass

J. Zhang et al.

Table 1. Pearson correlations of tree biomass and climatic variables, elevation, and observed canopy height, after accounting for spatial autocorrelation.

	ln(Biomass)	Elevation	Canopy height	MAT	MWMT	MCMT	MAP	MSP	AHM	SHM	DD0	DD5
Elevation	0.300 ^c											
Canopy height	0.752 ^c	0.057										
MAT	0.314 ^b	0.341 ^a	0.307 ^c									
MWMT	-0.290 ^b	-0.943 ^c	-0.054	-0.272								
MCMT	0.374 ^b	0.787 ^c	0.230 ^a	0.829 ^c	-0.743 ^c							
MAP	0.276 ^b	0.850 ^c	0.103	0.459 ^b	-0.822 ^c	0.791 ^c						
MSP	0.274 ^b	0.748 ^c	0.150 ^a	0.613 ^c	-0.678 ^c	0.823 ^c	0.832 ^c					
AHM	-0.129 ^a	-0.761 ^c	0.065	0.071	0.788 ^c	-0.414 ^c	-0.831 ^c	-0.604 ^c				
SHM	-0.322 ^b	-0.866 ^c	-0.157	-0.622 ^c	0.828 ^c	-0.896 ^c	-0.877 ^c	-0.950 ^c	0.659 ^c			
DD0	-0.372 ^c	-0.691 ^c	-0.260 ^b	-0.911 ^c	0.636 ^c	-0.981 ^c	-0.721 ^c	-0.796 ^c	0.285 ^b	0.858 ^c		
DD5	-0.189 ^b	-0.898 ^c	0.065	0.044	0.934 ^c	-0.511 ^c	-0.712 ^c	-0.546 ^c	0.854 ^c	0.677 ^c	0.371 ^b	
DI	-0.291 ^b	-0.950 ^c	-0.072	-0.368 ^a	0.951 ^c	-0.797 ^c	-0.924 ^c	-0.815 ^c	0.858 ^c	0.919 ^c	0.704 ^c	0.881 ^c

Notes: ^a < 0.05; ^b < 0.01; ^c < 0.001.

Title Page

Abstract

Introduction

Conclusions

References

Tables

Figures

⏪

⏩

◀

▶

Back

Close

Full Screen / Esc

Printer-friendly Version

Interactive Discussion



BGD

10, 19005–19044, 2013

Estimating spatial variation in Alberta forest biomass

J. Zhang et al.

[Title Page](#)[Abstract](#)[Introduction](#)[Conclusions](#)[References](#)[Tables](#)[Figures](#)[Back](#)[Close](#)[Full Screen / Esc](#)[Printer-friendly Version](#)[Interactive Discussion](#)**Table 2.** Validation statistics for four different approaches for total tree biomass estimation.

Methods for biomass estimation	R^2	MAE (Mg ha ⁻¹)	RMSE (Mg ha ⁻¹)	NRMSE (%)
Spatial interpolation	0.29	66.77	85.08	84.20
Non-spatial regression model	0.60	48.38	64.08	63.15
Spatial regression model	0.61	48.39	64.09	63.16
Decision-tree modeling with random forests algorithm	0.62	48.43	64.18	62.25

Notes: MAE: mean absolute error; RMSE: root mean square error; NRMSE: the normalized root mean square error.

Estimating spatial variation in Alberta forest biomass

J. Zhang et al.

[Title Page](#)

[Abstract](#)

[Introduction](#)

[Conclusions](#)

[References](#)

[Tables](#)

[Figures](#)

[◀](#)

[▶](#)

[◀](#)

[▶](#)

[Back](#)

[Close](#)

[Full Screen / Esc](#)

[Printer-friendly Version](#)

[Interactive Discussion](#)



Table 3. Total tree biomass estimated by decision-tree based modelling (RF approach) in different natural regions and subregions in Alberta forests.

Forest regions		Summary based on 1 km pixels		Summary based on forest inventory plots		
		Total (10 ⁹ Mg)	Percentage (%)	Number of plots	Mean (Mgha ⁻¹)	Range (Mgha ⁻¹)
Natural regions	Boreal	1.81	58.17	571	126.66	0.01–613.82
	Foothills	0.76	24.56	1137	192.57	0.49–534.08
	Rocky Mountain	0.50	16.16	247	190.80	4.29–423.74
	Canadian Shield	0.03	1.09	13	56.10	8.15–125.16
	Total	3.11	100	1968	172.33	0.01–613.82
Natural subregions	Central Mixedwood	0.91	29.23	349	134.47	0.01–613.82
	Lower Foothills	0.47	15.18	677	197.01	0.49–534.08
	Subalpine	0.36	11.61	216	191.60	4.29–432.74
	Lower Boreal Highlands	0.34	10.94	80	139.48	0.93–486.63
	Dry Mixedwood	0.30	9.70	82	129.97	5.90–335.92
	Upper Foothills	0.29	9.38	460	186.05	1.54–461.15
	Northern Mixedwood	0.12	3.73	20	95.73	4.74–302.41
	Montane	0.11	3.55	30	185.34	51.23–348.82
	Upper Boreal Highlands	0.06	2.00	9	49.01	4.29–158.81
	Athabasca Plain	0.04	1.19	25	35.81	3.19–94.84
	Boreal Subarctic	0.03	1.01	4	22.11	8.85–55.44
	Alpine	0.03	1.00	1	–	–
	Kazan Uplands	0.03	1.09	13	56.10	8.15–125.16
	Peace–Athabasca Delta	0.01	0.36	2	118.63	99.32–137.95

Estimating spatial variation in Alberta forest biomass

J. Zhang et al.

[Title Page](#)

[Abstract](#)

[Introduction](#)

[Conclusions](#)

[References](#)

[Tables](#)

[Figures](#)

◀

▶

◀

▶

[Back](#)

[Close](#)

[Full Screen / Esc](#)

[Printer-friendly Version](#)

[Interactive Discussion](#)



Table 4. Total tree biomass of three major tree species estimated by decision-tree based approach.

Species	Natural regions	Summary based on 1 km pixels		Summary based on forest inventory plots	
		Total (10^9 Mg)	Percentage (%)	Mean (Mg ha^{-1})	Range (Mg ha^{-1})
Lodgepole pine	Boreal	0.12	15.87	4.56	0.00–224.51
	Foothills	0.33	44.08	64.01	0.00–378.31
	Rocky Mountain	0.30	39.96	100.01	0.00–406.45
	Canadian Shield	0.01	0.06	0.00	0.00–0.00
	Total	0.76	100.00	50.86	0.00–406.45
Aspen	Boreal	0.52	77.53	60.26	0.00–486.02
	Foothills	0.09	13.62	45.31	0.00–497.95
	Rocky Mountain	0.05	6.75	5.70	0.00–217.14
	Canadian Shield	0.01	2.08	26.22	0.00–124.93
	Total	0.68	100.00	44.55	0.00–497.95
White spruce	Boreal	0.27	58.11	29.69	0.00–389.88
	Foothills	0.10	21.32	33.01	0.00–360.92
	Rocky Mountain	0.09	18.34	46.20	0.00–406.45
	Canadian Shield	0.01	2.20	19.86	0.00–111.75
	Total	0.47	100.00	33.61	0.00–389.88

Estimating spatial variation in Alberta forest biomass

J. Zhang et al.

[Title Page](#)

[Abstract](#)

[Introduction](#)

[Conclusions](#)

[References](#)

[Tables](#)

[Figures](#)

[⏪](#)

[⏩](#)

[◀](#)

[▶](#)

[Back](#)

[Close](#)

[Full Screen / Esc](#)

[Printer-friendly Version](#)

[Interactive Discussion](#)



Table 5. Biomass estimations in previous studies.

Reference	Study Area	Area (Mha)	Methodology or data source	Total tree biomass ($\times 10^9$ Mg)	Mean Bio-mass density (Mgha^{-1})
Dixon et al. (1994)	Boreal forests (Global)	1372	Inventory data (1987–1990)	176	128
Cao and Woodward (1998)	Boreal forests (Global)	1210	Predicted from a global carbon model (1990s)	111.32	92
Jarvis et al. (2001)	Boreal forests (Global)	1381	Inventory data (1990s)	114.99	83
Myneni et al. (2001)	Northern forests (Global)	1419.9	Remote sensing (NDVI; 1995–1999)	121.44	85.82
Pan et al. (2011)	Boreal forests (Global)	1135	Inventory data and statistical or process models (2007)	140	123.35
Bonnor (1985)	Canadian forests	440.7	Volume Inventory data (1981)	35.48	80.24
Dixon et al. (1994)	Canadian forests	436	Inventory data (1987–1990)	24	56
Penner et al. (1997)	Canadian forests	440.7	Volume Inventory data (1991)	56.34	127.84
Kurz and Apps (1999)	Canadian forests	404.2	Inventory data (1990s)	29.02	71.8
Pan et al. (2011)	Canadian forests	229.4	Inventory data and statistical or process models (2007)	38	165.65
Myneni et al. (2001)	Canadian forests	239.5	Remote sensing (NDVI; 1995–1999)	21.12	88.18
Liski and Kauppi (2000)	Canadian forests	244.6	Inventory data (mid–1990s)	23.78	97.22
Penner et al. (1997)	Alberta forests	40.3	Volume Inventory data (1991)	4.28	106.08
Bonnor (1985)	Alberta forests	40.3	Volume Inventory data (1981)	3.15	77.52
This study	Alberta forests	40.3	Inventory data (2000–2012) and LiDAR canopy height data (2006)	3.11	77.59

Notes: For the studies with aboveground biomass data only, belowground biomass is assumed to be 0.36 of the aboveground biomass (Jarvis et al., 2001).

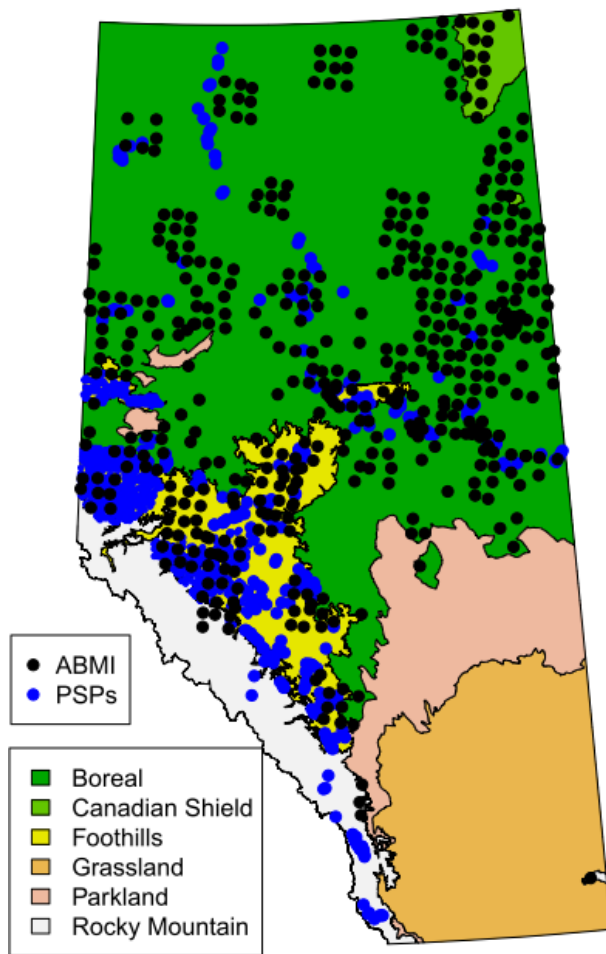


Fig. 1. Spatial distribution of 1968 inventory plots in Alberta forests, Canada.

BGD

10, 19005–19044, 2013

Estimating spatial variation in Alberta forest biomass

J. Zhang et al.

Title Page

Abstract

Introduction

Conclusions

References

Tables

Figures

◀

▶

◀

▶

Back

Close

Full Screen / Esc

Printer-friendly Version

Interactive Discussion



Estimating spatial variation in Alberta forest biomass

J. Zhang et al.

Title Page

Abstract

Introduction

Conclusions

References

Tables

Figures



Back

Close

Full Screen / Esc

Printer-friendly Version

Interactive Discussion

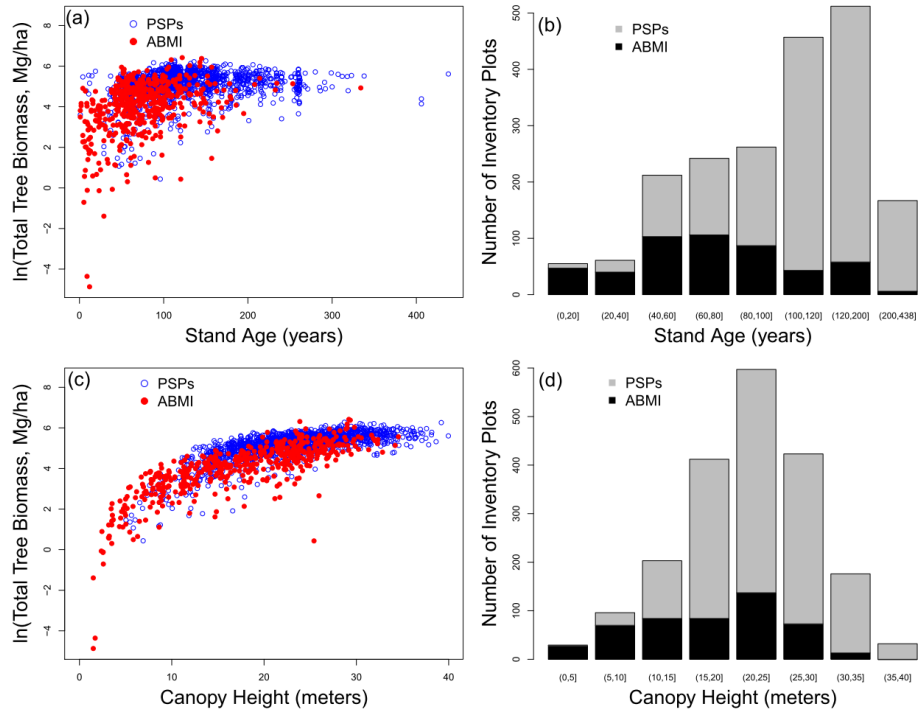


Fig. 2. Total tree biomass vs. canopy height and stand age of 1968 inventory plots.

Estimating spatial variation in Alberta forest biomass

J. Zhang et al.

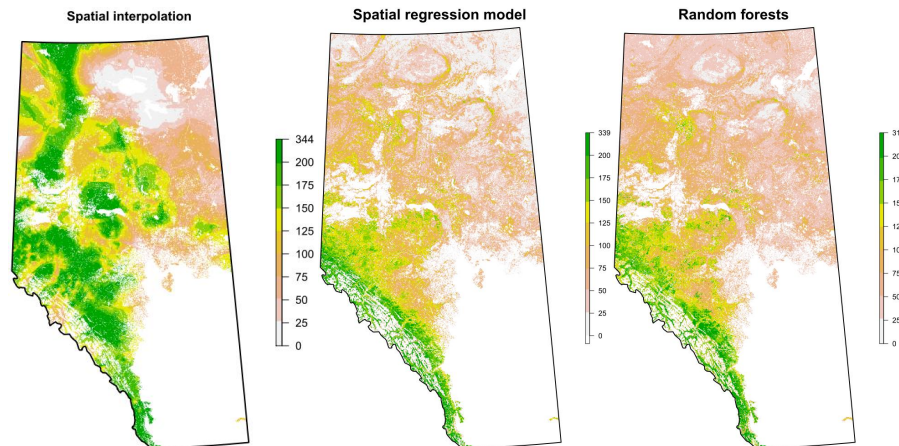


Fig. 3. The estimates of total biomass density (Mg ha^{-1}) using spatial interpolation, spatial multiple regression model, and decision-tree based modeling with random forests algorithm (Projection: UTM zone = 11; spatial resolution: 1 km).

[Title Page](#)[Abstract](#)[Introduction](#)[Conclusions](#)[References](#)[Tables](#)[Figures](#)[◀](#)[▶](#)[◀](#)[▶](#)[Back](#)[Close](#)[Full Screen / Esc](#)[Printer-friendly Version](#)[Interactive Discussion](#)

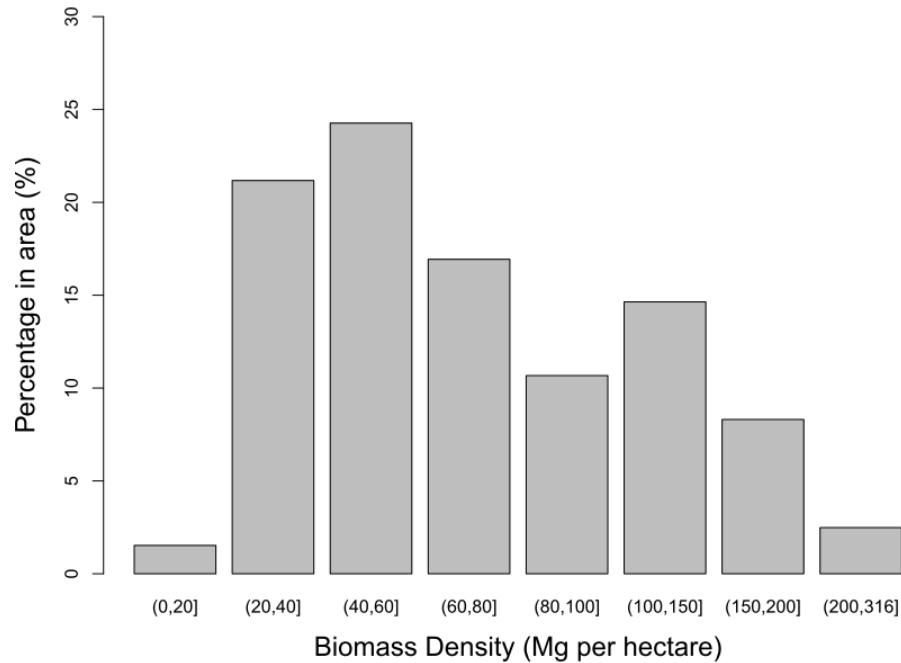


Fig. 4. Histogram of forest biomass density based on the estimate of decision-tree based modeling.

BGD

10, 19005–19044, 2013

Estimating spatial variation in Alberta forest biomass

J. Zhang et al.

Title Page

Abstract

Introduction

Conclusions

References

Tables

Figures



Back

Close

Full Screen / Esc

Printer-friendly Version

Interactive Discussion



Estimating spatial variation in Alberta forest biomass

J. Zhang et al.

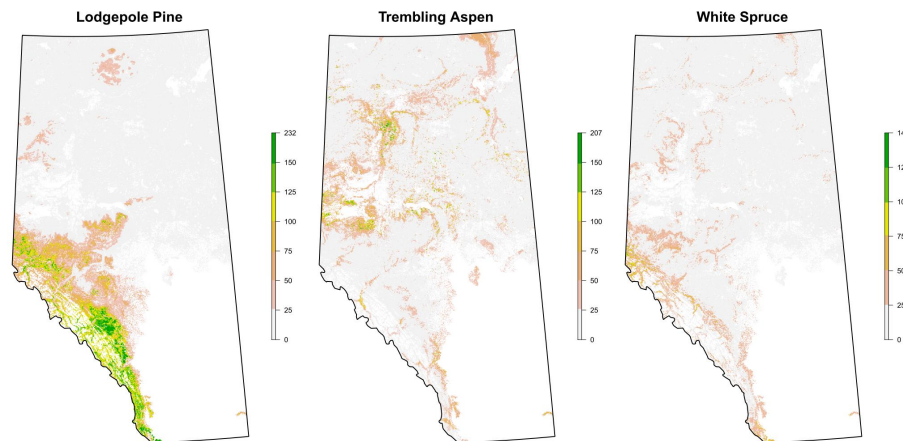


Fig. 5. Total tree biomass density (Mg ha^{-1}) of three major tree species based on decision-tree based modeling (Projection: UTM zone = 11; spatial resolution: 1 km).

[Title Page](#)[Abstract](#)[Introduction](#)[Conclusions](#)[References](#)[Tables](#)[Figures](#)[◀](#)[▶](#)[◀](#)[▶](#)[Back](#)[Close](#)[Full Screen / Esc](#)[Printer-friendly Version](#)[Interactive Discussion](#)

Estimating spatial variation in Alberta forest biomass

J. Zhang et al.

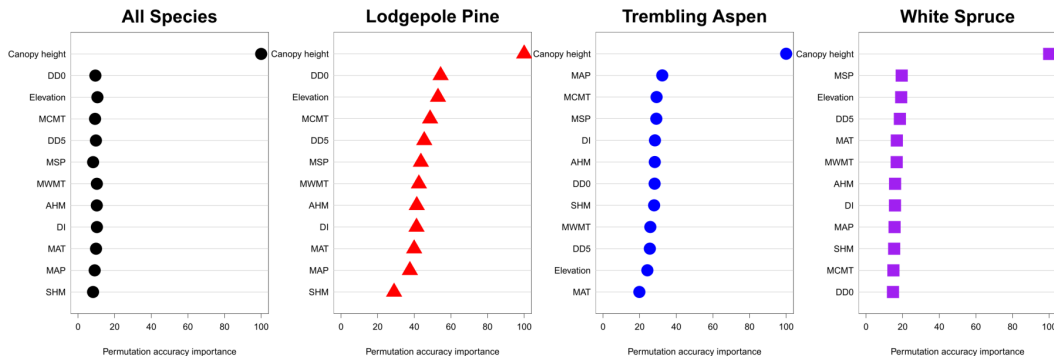


Fig. 6. Relative importance of predictor variables for biomass estimation by decision-tree based modeling with random forest algorithm. Variable importance is measured in mean decrease in accuracy, which is the decrease in accuracy of a classification after the variable has been randomly permuted. A higher mean decrease in accuracy means the variable contributes more to the accuracy of the classification.