

Supplementary Materials

Section 1. Field sampling and flux calculations

1.1. Field sampling

Supraglacial and subglacial runoff samples were collected from the sampling sites (Table 1) in pre-furnaced (400 °C for 6 hrs) borosilicate glass bottles and filtered <2 hrs after collection using either plastic apparatus with 0.45 µm cellulose-nitrate membrane filters (major ion and dissolved Si determination) or pre-furnaced glass filtration apparatus with pre-furnaced GF/F 0.70 µm filters (OC compound analysis). Cryoconite hole water samples were filtered in the field through Whatman polypropylene Puradisc™ 0.45 µm syringe filters and stored frozen in pre-furnaced glass vials. Water samples were stored in the dark at -12 °C (in-field freezer) prior to storage in the University of Bristol LOWTEX facility (≤ -25 °C). For snow and basal ice collection, the outermost layers (which are potentially subject to modern contamination) were first removed before sampling. Sediment-rich basal ice from the glacier terminus was collected by chain sawing, transported frozen and stored at ≤ -25 °C prior to analysis. Snow was collected by using a pre-furnaced metal trowel and stored at ≤ -25 °C in pre-furnaced foil envelopes.

Water stage in the main subglacial outflow channel was logged at 5 minute intervals, at a stable bedrock section ~2.2 km downstream from the glacier terminus (Figure 1) and converted to discharge (Q) using a rating curve ($r = 0.92$) with an uncertainty of $\pm 14\%$ (as detailed in (Bartholomew et al., 2011; Cowton et al., 2012)). Suspended sediment concentration (SSC) was derived by calibrating turbidity measurements (logged every 5

mins) against 80 manual grab samples taken throughout the two seasons ($r = 0.92$ with an uncertainty of $\pm 6\%$).

Table 1 Location of the 2009-2011 sampling sites and sampling information.

Year	Sample details	Elevation (a.s.l)	Geographical Position		Date sampled	n	
			N	W			
2009	Subglacial runoff	209 m	67°06'23.50"	50°20'33.40"	June 23 – Aug 18	105	
	Moulin 2.1 km	380 m	67°03'58.20"	50°08'23.00"	June 29 – Aug 5	14	
	Moulin 2.2 km	343 m	67°04'01.70"	50°09'07.10"	June 29 – Aug 5	8	
2010	Subglacial runoff	209 m	67°06'23.50"	50°20'33.40"	May 25 – Aug 21	190	
	Moulin 2.1 km	380 m	67°03'58.20"	50°08'23.00"	June 4 – Aug 17	6	
	Moulin 2.3 km	383 m	67°04'24.50"	50°07'62.70"	June 4 – Aug 17	2	
	Moulin 4 km	259 m	67°04'48.40"	50°01'64.40"	June 4 – July 29	8	
	Moulin 7 km	579 m	67°05'08.00"	50°01'40.10"	June 9 – Aug 7	5	
	Moulin 17 km	713 m	67°06'37.00"	52°02'30.20"	June 2 and 7	2	
	Moulin 33 km	1022 m	67°06'56.70"	49°24'00.52"	June 7	1	
	Snow 33 km	1022 m	67°06'56.70"	49°24'00.52"	June 7	2	
	Supraglacial lake 50 km	1446 m	67°07'34.40"	49°00'36.00"	June 7	1	
	Snow 50 km	1446 m	67°07'34.40"	49°00'36.00"	June 7	2	
	Snow 70 km	1446 m	67°09'10.80"	44°22'14.60"	June 7	2	
	2011	Cryo 2 km a	330 m	67°03'99.70"	50°09'30.20"	21 June	2
		Cryo 2 km b	332 m	67°03'98.10"	50°09'33.60"	21 June	2
Cryo 2 km c		334 m	67°03'98.00"	50°09'27.10"	21 June	2	
Cryo 2 km d		328 m	67°03'98.50"	50°09'21.90"	21 June	1	
Cryo 2 km e		337 m	67°03'98.90"	50°09'19.10"	21 June	2	
Cryo 2 km f		343 m	67°03'99.30"	50°09'05.80"	21 June	2	
Cryo 2 km g		342 m	67°03'98.70"	50°08'98.90"	21 June	2	
Cryo 2 km h		358 m	67°04'00.20"	50°09'00.00"	21 June	2	
Cryo 2 km i		348 m	67°04'02.30"	50°09'04.00"	21 June	2	
Cryo 2 km j		343 m	67°04'03.50"	50°09'06.60"	21 June	1	

1.2. Seasonal flux calculations

1.2.1. Dissolved Organic Carbon (DOC) and free carbohydrate (FCHO) fluxes from Leverett Glacier

Discharge (Q) monitoring in both years commenced with the onset of runoff in the main subglacial outflow channel from Leverett Glacier, with chemical sampling taking place for the majority of this period. Dissolved Organic Carbon (DOC) and free carbohydrate (FCHO) fluxes from Leverett catchment were calculated separately for the main monitoring period when chemical samples were collected, and the start (37 days in 2009, 13 in 2010) and end of each season (17 days in 2009, 42 in 2010) when only Q data was available. Water fluxes in 2009 and 2010 were $1.98 \times 10^9 \text{ m}^3$ and $1.07 \times 10^9 \text{ m}^3$ respectively, accounting for 90% and 84% of the total seasonal runoff, based upon melt season duration (Mernild et al., 2010).

Fluxes during the chemical monitoring period were determined as follows. Fluxes were calculated between two sampling points (S1 and S2) by multiplying the measured DOC/FCHO concentration at S1 by the cumulative Q recorded between S1 and S2. Instantaneous fluxes between successive DOC/FCHO sampling points were then summed to give a total for the chemical monitoring period. Consequentially, the analyte concentration during these time periods (typically 10-14 hours) was assumed to remain constant. Early and late season fluxes were calculated from the product of a DOC/FCHO discharge-weighted mean (DWM) determined from the first and last week of DOC/FCHO measurements, respectively, and the total runoff flux for each period. In 2009, Q was monitored from DY 137-246. Towards the end of monitoring Q was *c.* $40 \text{ m}^3 \text{ s}^{-1}$ and declining rapidly. In 2010, Q remained high at the cessation of monitoring. A return visit to the catchment on 29 September found that the river had fallen to insignificant levels ($<5 \text{ m}^3 \text{ s}^{-1}$) (Cowton et al., 2012). The

total water flux for this period was calculated assuming a linear decline and multiplied by the end of season 2010 DWM to generate the additional 2010 DOC/FCHO fluxes.

1.2.2. Suspended sediment and particulate organic carbon fluxes from Leverett Glacier

Suspended sediment (SS) particulate organic carbon (POC) minimum, mean and maximum values in 2009 were 0.040, 0.092 and 0.151%, and 0.010, 0.043 and 0.113 % in 2010. Seasonal catchment POC fluxes for each year were derived from the product of the total SSC flux ($4.7 \pm 0.7 \times 10^6$ tonnes in 2009 (Bartholomew et al., 2011), 2.75×10^6 tonnes in 2010 (Cowton et al., 2012)) and the % POC content of SS measured at Leverett Glacier in 2009 and 2010. An additional 10% ($\pm 9\%$ uncertainty) was added to the 2010 POC flux based on an extrapolation of the discharge and SSC record following the cessation of monitoring in 2010 which indicated that the total SSC flux may be $\sim 10\%$ greater than observed (Cowton et al., 2012).

Section 2. Analytical protocols, sample preparation and preliminary data

2.1. Glacial sediment

POC was calculated as the difference between total sediment carbon (TC) and sediment inorganic carbon (IC). TC and IC were measured on a EuroVector EA1108 Elemental Analyser (EuroVector, Milan, Italy) and modified Coulomat 702 Analyser (Strohlein Instruments, Kaarst, Germany), respectively. The precision of determinations was $<5\%$ and limit of detection (LOD) *c.* 0.1 mg g^{-1} (or 0.01%).

Carbohydrate concentrations in basal sediment were determined by an acid-extraction protocol to convert any polysaccharides and sugar derivatives to lower molecular weight

components (Jensen et al., 2005; Stibal et al., 2010), and were subsequently quantified by ion chromatography. The extraction method is described in brief; 250 mg of wet debris was added to an 8 ml glass screw-cap serum vial, fitted with a Teflon cap liner. 5 ml of 1M H₂SO₄ was added and the vial sealed. Samples were hydrolysed at 110°C for 24 hours. After cooling, samples were shaken for 30 mins and centrifuged. The supernatant was then neutralised to pH 4-5 by the addition of 1M NaOH, and stored in sterile polypropylene tubes at -20°C until analysis. Each extraction procedure was conducted in triplicate. Potential monosaccharide losses may occur during hydrolysis and were not compensated for (Jensen et al., 2005). Generally, minor losses only occur for most common carbohydrates, except for ribose and fructose, which are destroyed entirely (Borch and Kirchmann, 1997). Results are presented in Table 2.

Table 2. Summary statistics for carbohydrates in Leverett Glacier suspended sediment

Day of Year	Carbohydrate concentration (µg/g)	%carbohydrates in POC
175.33	123.12	13.38
182.75	216.44	23.53
185.75	154.35	16.78
191.75	61.62	6.70
198.33	19.14	2.08
205.33	22.10	2.40
214.33	93.12	10.12
219.75	14.52	1.58
220.75	34.39	3.74
222.33	152.58	16.58
224.75	23.77	2.58

2.2. Glacial meltwater, basal ice and snow

To prepare the basal ice for analytical study, small chunks were chipped from the main block using a flame sterilised chisel. The outer ~10-30 mm of these chips were removed with deionized water (DI, Millipore, Bedford, MA, USA). Both ice chips and snow samples were

melted in a pre-cleaned beaker inside a laminar flow cabinet (Telstar Mini-H) under ambient laboratory conditions. The melt was then filtered through Whatman polypropylene Puradisc™ 0.45 µm syringe filters. Samples were analysed following the protocols for glacial meltwater (see below).

DOC, measured as non-purgeable organic carbon, was determined by high temperature combustion (680°C) using a Shimadzu TOC-V_{CSN}/TNM-1 Analyzer equipped with a high sensitivity catalyst. Daily precision and accuracy were determined via repeat analysis of a DOC standard solution containing potassium hydrogen phthalate (C₈H₅KO₄) (Merck, DE). These were < ± 6%. The LOD was 5 µM C. Free carbohydrate and free amino acid determinations were performed by an ICS-3000 dual-analysis Reagent-Free Ion Chromatography system (Dionex, Sunnyvale, CA, USA). Using electrolytic eluent generation, nine carbohydrates (fucose, rhamnose, arabinose, galactose, glucose, xylose/mannose, fructose/sucrose, ribose and lactose) were separated isocratically at a flow rate of 0.35 mL min⁻¹ on a CarboPac PA20 column (3x150 mm), after passing through a CarboPac PA20 guard column (3x30 mm). Xylose/mannose and fructose/sucrose were reported together due to co-elution. Precision for fucose, rhamnose, arabinose, glucose and xylose/mannose was generally *c.* ± 5%, and *c.* ± 10% for galactose, fructose/sucrose, ribose and lactose. Accuracy of a certified external standard (Dionex, CA, USA) was < ± 7% for all analytes. The limit of quantification (LOQ) was determined, defined as the concentration of the lowest standard that could be significantly differentiated from the next highest (e.g. $\bar{x}_1 \pm s_1$ is significantly different from $\bar{x}_2 \pm s_2$, where \bar{x} is the mean and s the standard deviation). The LOQ for free carbohydrates ranged from 10-80 nM C. Free amino acids were determined for a subset of glacial samples (Table 3, n = 44) and separated via gradient anion exchange on an AminoPac PA10 column (2x250 mm), after passing through an AminoPac PA10 guard

column (2x50 mm). Pulsed electrochemical detection with an Au electrode was employed. A gradient mix of 0.25 M NaOH, 1.0 M Na-acetate (NaOAC) and DI was used to elute 14 FAAs (lysine, alanine, threonine, glycine, valine, serine/proline, isoleucine, leucine, methionine, phenylalanine, cysteine, aspartic acid, glutamic acid and tyrosine) at a flow rate of 0.25 mL min⁻¹. Serine and proline were reported together due to co-elution. Precision was typically *c.* ± 5% for lysine, alanine, threonine, glycine, valine, serine/proline, isoleucine, leucine, methionine, and cysteine, and *c.* ± 10% for phenylalanine, aspartic acid, glutamic acid and tyrosine. Accuracy was < ± 7% for all analytes (certified external standard, Fluka Analytical). The LOQ ranged from 10-60 nM C.

Table 3 Free amino acid concentrations in a subset of subglacial and supraglacial samples collected in 2010-11

Sample	Mean free amino acids (µM C)	Free amino acid range (µM C)	n	% free amino acids in DOC	% free amino acids in DOC range
Subglacial runoff 2010	1.06 (1.08)	0.03 - 4.22	20	1.24 (1.23)	0.02 - 4.23
Supraglacial (2-7 km)	0.23 (0.41)	0.00 - 0.84	4	1.02 (1.64)	0.00 - 3.44
Snow	0.59 (0.02)	0.57 - 0.60	2	1.93 (0.13)	1.83 - 2.02
Basal ice	0.11 (0.14)	0.01 - 0.44	10	0.29 (0.40)	0.01 - 1.31
Cryoconite waters (2 km)	5.85 (6.09)	0.27 - 16.77	8	2.09 (1.08)	0.08 - 3.08

Major anions (Cl⁻, NO³⁻, SO^{4 2-}) and cations (Na⁺, K⁺, Mg²⁺, Ca²⁺) were measured on a DX-500 Ion Chromatography system (Dionex, Sunnyvale, CA, USA) and HCO₃⁻ calculated by charge deficit. Measurement precision and accuracy was *c.* ± 4% and *c.* ± 7%, respectively, although this increased near the instrument detection limit (*c.* 0.5 µeq L⁻¹). SO₄²⁻, K⁺, Na⁺, Mg²⁺ and Ca²⁺ concentrations in basal ice and subglacial runoff samples were corrected for

snowpack contributions (Wadham et al., 1998), and the residual crustal-derived component denoted with an asterisk (*). Dissolved Si was determined using a continuous segmented-flow Bran and Luebbe AutoAnalyser. Measurement precision and accuracy was *c.* $\pm 0.5\%$ and *c.* $\pm 10\%$, respectively, and the LOD was $0.74 \mu\text{mol L}^{-1}$.

2.3. Spectrofluorescence

Synchronous fluorescence spectra were determined on a HORIBA Jobin Yvon Fluorolog-3 spectrofluorometer. Scans were performed at 1 nm increments with a 0.1s integration period, 10 nm bandwidth and 18 nm offset between excitation and emission monochromators. All scans were corrected for Raman scattering and inner-filter effects. All spectra were normalized to the sample fluorescence peak spectral maximum (i.e. the maximum fluorescent intensity in all glacial samples). Fluorophore recognition was based on values reported in the literature (Coble, 1996; Ferrari and Mingazzini, 1995; Miano and Senesi, 1992; Yamashita and Tanoue, 2003). The percentage of protein-like fluorescence (compounds fluorescing between 260-285 nm to the total fluorescence (adapted from (Hood et al., 2009)) was calculated for each sample subset.

2.4. Bioavailability experiments

The bioavailability of DOC (BDOC) in glacial runoff was determined as the difference in DOC at the start and end of laboratory incubations (22 day duration) (Fellman et al., 2008; Fellman et al., 2010). Glacial runoff from Leverett Glacier terminus (glacial) and the Watson River near Kangerlussuaq (67.28° N , 50.41° W) (proglacial) were filtered through $0.3 \mu\text{m}$ (pre-furnaced 450° C for 4 hr) ADVANTECH GF-75 glass fibre filters to remove microorganisms. After filtration, 90 mL of the glacial filtrate was placed into pre-furnaced 125 mL glass serum vials and a 10 mL microbial inoculum was added. Microbial inocula

consisted of near-coastal marine water collected in July 2012 ~1 km from the Nuuk coastline (64°08'N, 51°47'W) ~0.5 m below the ocean surface. Microbial inocula were filtered through pre-furnaced glass fibre filters of nominal pore size 2.7 µm. 18 BDOC incubations were set up (9 containing glacial runoff and 9 containing proglacial runoff) and incubated at 1°C in the dark. Sample water was extracted after 1, 2 and 22 days (hereafter referred to as T(time)1, T2 and T22). Three replicate BDOC incubations were sampled at each time point for both Greenland glacial and proglacial runoff types, and used in determinations of DOC and bacterial cell abundance. At each sampling point, 25 mL from all sampled incubations was re-filtered through 0.45 µm PP syringe filters for DOC determination and 50 mL aliquots (not filtered) were fixed in glutaraldehyde to a final concentration of 2% for the enumeration of bacteria. 10 mL aliquot samples were stained with DAPI (4',6-diamidino-2-phenylindole, Sigma), filtered onto 0.2 µm black polycarbonate filters and counted under epifluorescence microscopy at a magnification of x1000 under UV excitation. Twenty Whipple grids were counted on each preparation.

Section 3. Supplementary data

We present major inorganic and organic compound concentrations in subglacial runoff from 2009 (Table 4) and 2010 (Table 5). We compare discharge to total ion concentrations (Figure 1) to investigate whether ion concentrations are subject to a dilute effect as the melt season progresses, as has been observed in alpine glacial systems. We also use the major ion data to investigate relationships between total ionic strength and the ratio of $(*Ca^{2+} + *Mg^{2+}):(*Na^{+} + *K^{+})$ (Figure 2), to assess the relative contributions of carbonate and silicate dissolution to bulk runoff chemistry.

Table 4 Major inorganic and organic compound concentrations measured in time periods from the 2009 melt season. The melt season was subdivided on the basis of contrasting geochemistry into early season runoff (E2009), runoff predominantly exported before and after DY 194 (RS1 and RS2, respectively, RS = res of season), and the P-event, P1(2009). Values reported are the mean concentrations with standard deviation (SD) in parentheses. The range of concentrations is given in italics. Outliers of individual analytes exceeding the mean $\pm 3 \times$ SD have been excluded. Ionic strength refers to snowpack corrected concentrations. n.d. = not determined.

Time period	DOC ($\mu\text{M C}$)	FCHO (nM C)	% DOC from FCHO	Si ($\mu\text{mol L}^{-1}$)	*SO₄²⁻ ($\mu\text{eq L}^{-1}$)	*Na⁺ + *K⁺ ($\mu\text{eq L}^{-1}$)	Ionic strength ($\mu\text{eq L}^{-1}$)
E2009 (DY 174-179)	62.70 (26.46) 27.92 – 104.60	89.23 (59.58) 38.36 - 255.71	0.17 (0.12) 0.06 – 0.38	6.64 (1.24) 5.12 – 9.30	34.66 (6.89) 25.07 – 42.79	62.19 (10.78) 45.65 – 80.12	345.87 (46.47) 286.26 – 412.59
P1(2009) (DY 184-186)	42.14 (17.56) 26.92 – 66.91	346.24 (431.07) 113.97 -1223.67	0.71 (0.56) 0.29 – 1.83	8.23 (1.40) 6.86 – 10.82	63.33 (7.80) 51.63 – 70.38	132.37 (21.72) 99.30 – 156.38	559.33 (56.84) 466.96 – 618.28
RS1 (DY 180-193)[§]	38.67 (23.76) 12.25 – 124.15	133.45 (141.56) 2.11 - 521.83	0.27 (0.29) 0.00 – 0.98	6.15 (1.15) 4.51 – 8.89	24.39 (7.45) 7.83 – 44.21	52.64 (17.64) 14.03 – 91.29	289.64 (59.80) 133.05 – 414.22
RS2 (DY 194-230)	39.68 (22.63) 12.40 – 106.87	98.54 (133.87) 1.50 - 682.95	0.16 (0.19) 0.00 – 0.85	7.17 (0.79) 5.72 – 8.98	29.96 (4.31) 22.17 – 38.37	32.88 (2.71) 25.55 – 37.89	223.10 (27.10) 158.66 – 268.73
Seasonal average	41.35 (23.19) 12.25 – 124.15	120.65 (171.67) 1.50 - 1223.67	0.22 (0.27) 0.00 – 1.83	6.92 (1.10) 4.51 – 10.82	31.22 (10.36) 7.83 - 70.37	47.08 (26.51) 14.03 - 156.38	274.11 (92.67) 133.05 – 618.28

Table 5 Major inorganic and organic compound concentrations measured in time periods from the 2010 melt season. The melt season was subdivided on the basis of contrasting geochemistry into early season runoff (E2010) and three P-events. RS accounts for the remainder of the drainage season not characterised by specific periods. Values reported are the mean concentrations with standard deviation (SD) in parentheses. The range of concentrations is given in italics. Outliers of individual analytes exceeding the mean $\pm 3 \times$ SD have been excluded. Ionic strength refers to snowpack corrected concentrations. n.d. = not determined.

Time period	DOC ($\mu\text{M C}$)	FCHO (nM C)	% DOC from FCHO	Si ($\mu\text{mol L}^{-1}$)	*SO₄²⁻ ($\mu\text{eq L}^{-1}$)	*Na⁺ + *K⁺ ($\mu\text{eq L}^{-1}$)	Ionic strength ($\mu\text{eq L}^{-1}$)
E2010	19.66 (8.99)	88.68 (92.52)	0.42 (0.28)	5.11 (2.06)	36.46 (7.95)	70.12 (9.64)	354.92 (9.64)
(DY 150-155)	9.34 – 38.20	3.86 - 704.03	0.07 – 0.92	2.18 – 8.12	23.80 – 48.57	48.68 – 81.82	48.68 – 81.82
P1(2010)	16.04 (9.30)	30.02 (15.90)	0.21 (0.10)	3.26 (0.57)	35.30 (5.74)	62.08 (7.54)	325.96 (21.15)
(DY 160-164)	8.28 – 31.96	11.24 - 55.70	0.12 – 0.38	2.82 – 4.57	29.32 – 45.37	49.27 – 71.48	294.29 – 356.12
P2(2010)	12.08 (4.63)	24.88 (18.67)	0.17 (0.11)	4.39 (1.73)	30.73 (7.19)	49.07 (9.95)	276.35 (42.60)
(DY 166-169)	6.47 – 20.73	14.86 - 65.81	0.00 – 0.32	2.08 – 7.00	16.67 – 43.53	32.88 – 60.85	191.26 – 326.16
P3(2010)	20.32 (5.58)	58.23 (44.76)	0.28 (0.19)	3.22 (1.25)	49.59 (21.07)	70.85 (30.58)	357.38 (83.90)
(DY 181-184)	10.75 – 29.92	6.76 - 176.55	0.02 – 0.68	1.45 – 5.86	16.69 – 79.20	18.63 – 106.85	194.20 – 467.12
RS	17.82 (10.97)	86.88 (105.23)	0.63 (1.21)	3.22 (1.08)	29.99 (12.63)	47.23 (19.16)	244.17 (68.73)
	5.16 – 70.25	3.86 - 704.03	0.00 – 9.90	1.29 – 5.56	5.97 – 64.60	7.78 – 102.78	63.15 – 408.22
Seasonal average	17.66 (10.17)	77.24 (93.57)	0.52 (1.01)	3.43 (1.31)	32.72 (14.06)	52.15 (21.06)	269.58 (78.48)
	5.16 – 70.25	3.86 - 704.03	0.00 – 9.90	1.29 – 8.12	5.97 - 79.20	7.78 - 106.85	63.15 - 467.12

Figure 1 Comparing discharge to total ion concentration (snowpack-corrected) in a) 2009 and b) 2010 subglacial runoff. Note the lack of linear correlation between the two variables in both years ($R^2 = 0.0239$ and 0.0031 in 2009 and 2010, respectively).

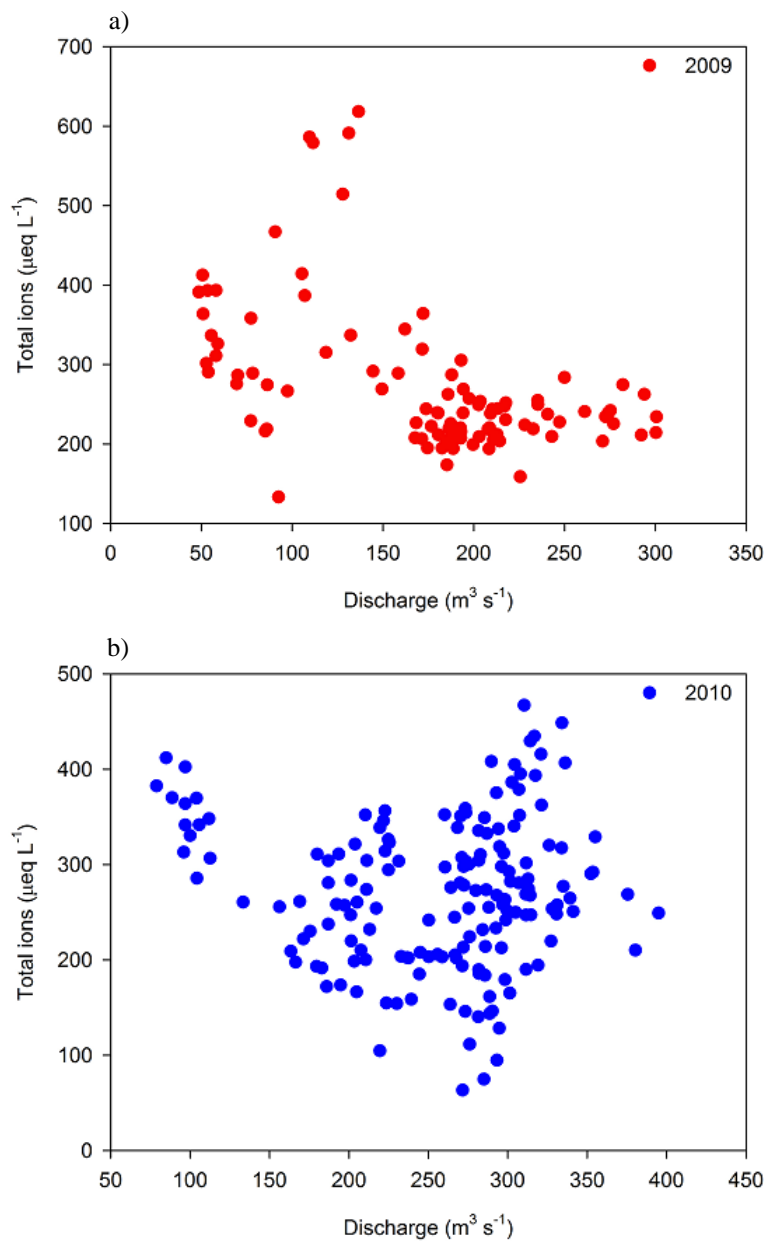
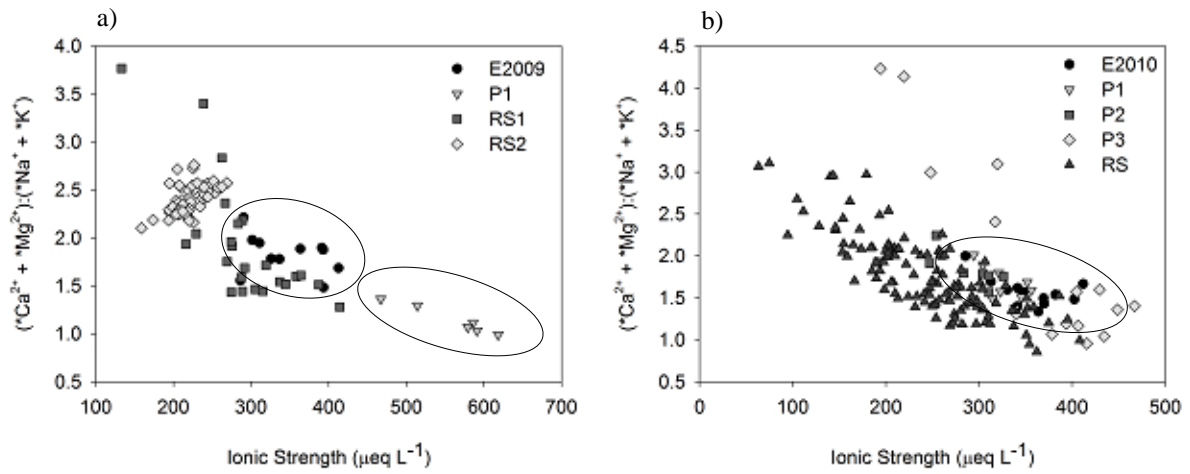


Figure 2 Associations between ionic strength and $(\text{Ca}^{2+} + \text{Mg}^{2+}) : (\text{Na}^{+} + \text{K}^{+})$ in subglacial runoff from 2009 (a) and 2010 (b). P-event (P) waters have been highlighted. RS refers to water exported throughout the remainder of the melt season, subdivided into RS1 and RS2 in 2009 due to contrasting geochemistry.



Section 4. Statistical analysis

A cross tabulation analysis was undertaken using SPSS 17.0 statistical software to assess the degree of synchronicity between DOC and FCHO spikes in the subglacial runoff. Data were first recoded into categorical variables (peak and no-peak, denoted as 1 and 0, respectively) where values within the top 10th percentile of each dataset were designated as peaks and missing values excluded from the analyses. Separate tests were conducted for the 2009 and 2010 datasets. Data were put into chronological order and the DOC_Peak_No_Peak column compared with the FCHO_Peak_No_Peak using asymptotic tests and employing an exact method (i.e. no Monte Carlo testing). Observed counts were used and the non-integer weights were rounded to whole numbers. In both years ~30% of all DOC and free carbohydrate peaks were synchronous. Attribute agreement analysis (Kappa statistics, 95% significance level) were used to determine the association between the timing of the DOC and FCHO spikes (Tables 6-7). A Kappa value of 0 suggests that the agreement is the same as would be expected by chance, a value of 1 indicates perfect agreement and a value <1 suggests that the agreement is less than that expected by change. Kappa values of 0.228 and 0.236 (2009 and 2010) are above that which would be expected by chance but do not indicate significant agreement between DOC and FCHO peaks. From this we conclude that DOC and FCHO spikes are predominantly asynchronous.

Table 6 Cross-tabulation of DOC and FCHO peaks (defined by the upper 10th percentile) in subglacial runoff from 2009. Values equal the number of cases.

2009	FCHO Peak	FCHO No_Peak	Total	Kappa
DOC Peak	3	7	10	
DOC No_Peak	6	67	73	
Total	9	74	83	0.228

Table 7 Cross-tabulation of DOC and FCHO peaks (defined by the upper 10th percentile) in subglacial runoff from 2010. Values equal the number of cases.

2010	FCHO Peak	FCHO No_Peak	Total	Kappa
DOC Peak	5	11	16	
DOC No_Peak	11	132	143	
Total	16	143	159	0.236

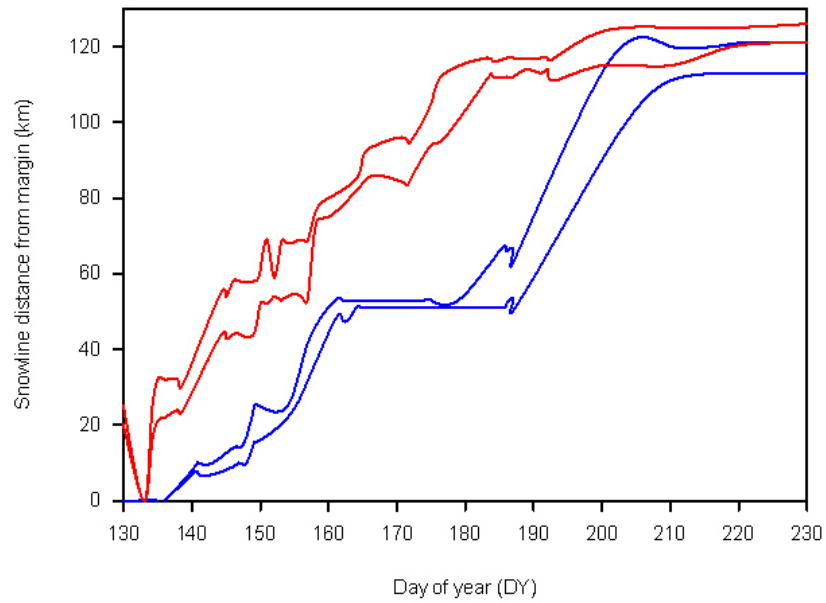
Section 5. Delineation of snowline migration at Leverett Glacier

An approximation of the Leverett Glacier hydrological catchment was first derived from a surface digital elevation model (Bartholomew et al., 2011; Palmer et al., 2011). Cloud-free satellite images (1 image per day) from the Moderate-resolution Imaging Spectrometer (MODIS) (Ardanuy et al., 1991) from 10th May to 18th August (DY 130-230) 2009 and 2010 were then imported into ArcGIS software and used to track snowline retreat over the Leverett Glacier catchment (Figure 3). Snowline position was identified by visual inspection and designated as the boundary between the grey/pale-blue surface (interpreted as snow-free glacier ice) and brilliant white surface (interpreted as snow). The presence of ice-free supraglacial lakes confirmed that areas were snow-free. The daily maximum and minimum snowline extent was determined by measuring the nearest and furthest distances of the

snowline, using a straight line due east from the Leverett Glacier margin. Early in the melt season when the catchment was predominantly snow-covered, the snowline was defined at the glacier margin positions (outer edge of the catchment area). When the snowline retreated beyond the catchment area later in the season, the nearest and furthest points were measured at the northerly and southerly bounds of the catchment area (~ 66.72 -- 67.17 °N). The difference between maximum and minimum snowline extent, and hence uncertainty, was ~ 5 - 10 km. The MODIS data used in this study were acquired using the NASA/GSFC, Rapid Response Imagery as part of the Land Atmosphere Near-real time Capability for EOS (LANCE) system operated by the NASA/GSFC/Earth Science Data and Information System (ESDIS) with funding provided by NASA/HQ. Images were available from

<http://rapidfire.sci.gsfc.nasa.gov/subsets/?project=aeronet&subset=Kangerlussuaq.yyyyddd.terra.250m>, where *yyyy* is the year and *ddd* the day.

Figure 3 Distance from the GrIS margin to the estimated snow line in the Leverett Glacier catchment and migration over the course of the 2009 (blue) and 2010 (red) melt seasons. The two lines for each year refer to the minimum and maximum snowline estimated snowline extent.



Section 6. Leverett Glacier as a representative of Greenland land-terminating glaciers

Leverett Glacier catchment has a size ($>1200 \text{ km}^2$) and altitudinal range (100 to $>1000 \text{ m a.s.l.}$) representative of many Greenland land-terminating glaciers (Bartholomew et al., 2011). With relevance to subglacial organic carbon cycling processes, we note that the debris composition and sediment morphology beneath Leverett Glacier is representative of $\sim 77\%$ of the West Greenland ice margin (Knight et al., 2002). In addition, the bedrock geology (Archaean gneiss reworked in the Proterozoic) at Leverett catchment is representative of the crystalline bedrock that dominates Greenland (Henriksen et al., 2000). Surface-derived DOC acquisition is thought to be controlled by microbial processes on the ice sheet surface, which are also ubiquitous across glacial systems within surface melt features (e.g. melting ice/snow, cryoconite holes, lakes) (Hodson et al., 2010; Telling et al., 2012). Hence, we have no reason to believe that surface organic carbon cycling and export at Leverett Glacier would be substantially different to any other melting glacial ice surface in Greenland. We acknowledge that there are climatological differences between north and south Greenland (e.g. driven by air temperature), which may affect rates of melting, but which should not affect pathways of microbial carbon cycling on glacier surfaces. Glacial runoff dynamics at Leverett Glacier, which drive OC export at the margin, are believed to characterise those across the GrIS western margin, demonstrating progressive upglacier seasonal expansion and evolution of both supraglacial and subglacial drainage systems (Bartholomew et al., 2011; Sundal et al., 2011). This suggests that the drivers for OC export at Leverett Glacier are widely applicable. While the fate of this runoff may differ between land-terminating glaciers such as Leverett Glacier and marine-terminating glaciers, this should not affect the export dynamics for OC at the ice margin. Hence, while we acknowledge that inter-site differences will always be apparent within very large glacial systems, our GrIS flux estimates derived from scaling up of

Leverett Glacier OC fluxes should provide robust order of magnitude estimates of fluxes from the GrIS.

Supplementary References

- Ardanuy, P.E., Han, D., Salomonson, V.V., 1991. The moderate resolution imaging spectrometer (MODIS) science and data system requirements. *Geoscience and Remote Sensing, IEEE Transactions on* 29, 75-88.
- Bartholomew, I., Nienow, P., Sole, A., Mair, D., Cowton, T., Palmer, S., Wadham, J., 2011. Supraglacial forcing of subglacial drainage in the ablation zone of the Greenland ice sheet. *Geophysical Research Letters* 38, L08502.
- Borch, N.H., Kirchmann, D.L., 1997. Concentration and composition of dissolved combined neutral sugars (polysaccharides) in seawater determined by HPLC-PAD. *Marine Chemistry* 57, 85-95.
- Coble, P.G., 1996. Characterization of marine and terrestrial DOM in seawater using excitation emission matrix spectroscopy. *Marine Chemistry* 51, 325-346.
- Cowton, T., Nienow, P., Bartholomew, I., Sole, A., Mair, D., 2012. Rapid erosion beneath the Greenland ice sheet. *Geology* 40, 343-346.
- Fellman, J., D'Amore, D., Hood, E., Boone, R., 2008. Fluorescence characteristics and biodegradability of dissolved organic matter in forest and wetland soils from coastal temperate watersheds in southeast Alaska. *Biogeochemistry* 88, 169-184.
- Fellman, J.B., Spencer, R.G.M., Hernes, P.J., Edwards, R.T., D'Amore, D.V., Hood, E., 2010. The impact of glacier runoff on the biodegradability and biochemical composition of terrigenous dissolved organic matter in near-shore marine ecosystems. *Marine Chemistry* 121, 112-122.
- Ferrari, G.M., Mingazzini, M., 1995. Synchronous Fluorescence-Spectra of Dissolved Organic-Matter (Dom) of Algal Origin in Marine Coastal Waters. *Marine Ecology-Progress Series* 125, 305-315.
- Henriksen, N., Higgins, A., Kalsbeek, F., Pulvertaft, T.C.R., 2000. Greenland from Archaean to Quaternary. *Geological Survey of Denmark and Greenland*.
- Hodson, A., Boggild, C., Hanna, E., Huybrechts, P., Langford, H., Cameron, K., Houldsworth, A., 2010. The cryoconite ecosystem on the Greenland ice sheet. *Annals of Glaciology* 51, 123-129.
- Hood, E., Fellman, J., Spencer, R.G.M., Hernes, P.J., Edwards, R., D'Amore, D., Scott, D., 2009. Glaciers as a source of ancient and labile organic matter to the marine environment. *Nature* 462, 1044-U1100.
- Jensen, M., Holmer, M., Thamdrup, B., 2005. Composition and diagenesis of neutral carbohydrates in sediments of the Baltic-North Sea transition. *Geochimica Et Cosmochimica Acta* 69, 4085-4099.
- Knight, P., Waller, R., Patterson, C., Jones, A., Robinson, Z., 2002. Discharge of debris from ice at the margin of the Greenland ice sheet. *Journal of Glaciology* 48, 192-198.
- Mernild, S.H., Liston, G.E., Steffen, K., van den Broeke, M., Hasholt, B., 2010. Increasing runoff from the Greenland Ice Sheet at Kangerlussuaq (Søndre Strømfjord) in a 30-year perspective, 1979–2008. *The Cryosphere Discuss.* 4, 321-345.
- Miano, T.M., Senesi, N., 1992. Synchronous Excitation Fluorescence Spectroscopy Applied to Soil Humic Substances Chemistry. *Science of the Total Environment* 118, 41-51.
- Palmer, S., Shepherd, A., Nienow, P., Joughin, I., 2011. Seasonal speedup of the Greenland Ice Sheet linked to routing of surface water. *Earth and Planetary Science Letters*.

Stibal, M., Lawson, E., Lis, G., Mak, K., Wadham, J., Anesio, A., 2010. Organic matter content and quality in supraglacial debris across the ablation zone of the Greenland ice sheet. *Annals of Glaciology* 51, 1-8.

Sundal, A.V., Shepherd, A., Nienow, P., Hanna, E., Palmer, S., Huybrechts, P., 2011. Melt-induced speed-up of Greenland ice sheet offset by efficient subglacial drainage. *Nature* 469, 521-524.

Telling, J., Stibal, M., Anesio, A., Tranter, M., Nias, I., Cook, J., Bellas, C., Lis, G., Wadham, J., Sole, A., 2012. Microbial nitrogen cycling on the Greenland Ice Sheet. *Biogeosciences* 9, 2431-2442.

Wadham, J.L., Hodson, A.J., Tranter, M., Dowdeswell, J.A., 1998. The hydrochemistry of meltwaters draining a polythermal-based, high Arctic glacier, south Svalbard: I. The ablation season. *Hydrological Processes* 12, 1825-1849.

Yamashita, Y., Tanoue, E., 2003. Chemical characterization of protein-like fluorophores in DOM in relation to aromatic amino acids. *Marine Chemistry* 82, 255-271.