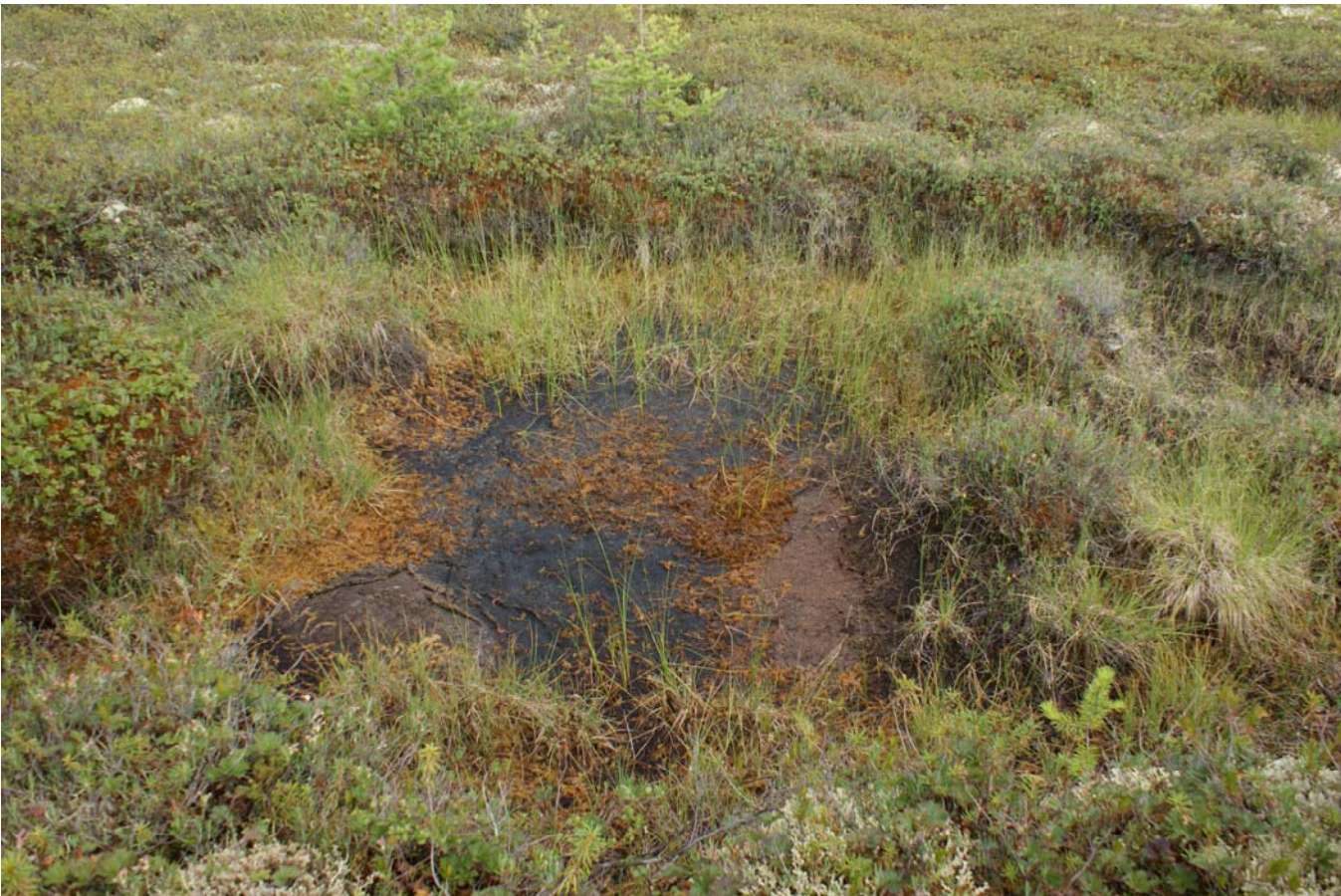


ESM-1. Ground level photos of typical permafrost depressions, thaw ponds and lakes investigated in this study







Z-9



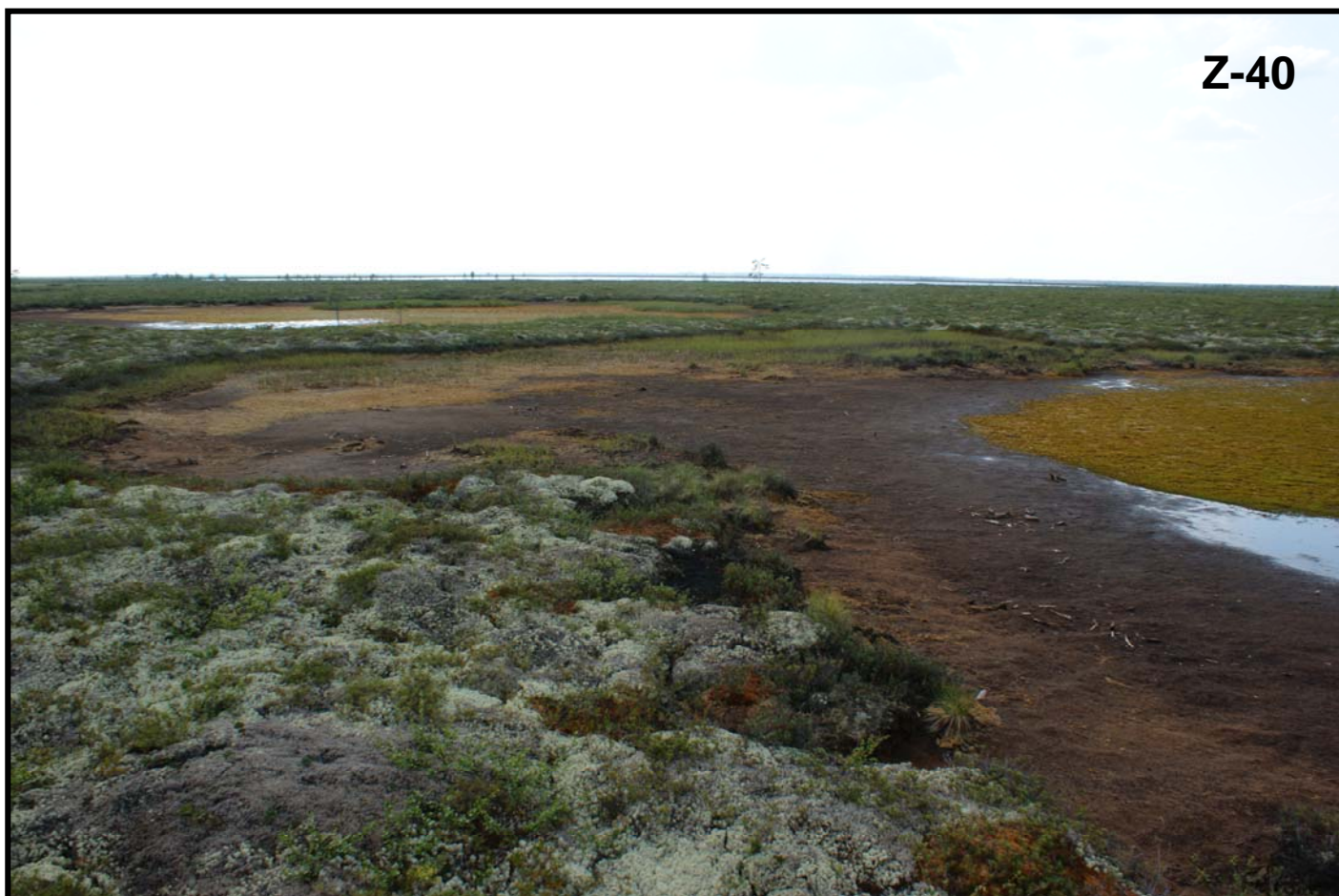




Z-34



Z-40



Z-36



ESM-2. Major and trace element composition of studied thermokarst water bodies. All concentrations are in $\mu\text{g/L}$. Detailed sample description is given in Table 1.

Element	Z-1	Z-2	Z-3	Z-4	Z-5	Z-6	Z-7	Z-8	Z-9	Z-10
B	4.1	26.3	4.709	5.703	4.711	2.89	5.984	5.007	6.089	2.049
Na	314.3	3253.0	50.13	1740	99.22	189.7	531.1	356.8	36.19	414.5
Mg	170.3	914.8	117.1	639.6	142.9	146.4	339.3	295.7	442.3	83.09
Al	42.7	834.3	31.48	121.4	142.7	82.25	131.7	118.1	100.2	90.6
Si	104.0	1.0	312	134	106	<d.l.	11.5	n.d.	4.6	97
P	0.8	302.1	1.232	9.458	18.69	3.556	17.55	17.06	2.949	10.43
K	86	5498	10.11	125.8	24.68	67.27	8.482	13.54	12.89	66.98
Ca	193	1555	118.8	1011	319.6	234.2	431.8	473.6	335.3	169.5
Ti	0.52	11.7	0.662	1.522	1.565	0.6067	1.419	1.133	0.8738	1.175
V	0.13	4.78	0.1804	0.5476	0.2559	0.3017	0.352	0.3506	0.3364	0.3489
Cr	0.17	2.85	0.2964	0.6494	0.4068	0.2136	0.5716	0.5718	0.8559	0.5202
Mn	14.7	24.7	19.24	56.14	12.39	13.11	21.39	16.04	20.08	10.08
Fe	92	1487	51.94	329.7	272.7	166.2	309.8	300.3	271.8	406.9
Co	0.0701	0.5351	0.03568	0.1456	0.1476	0.08208	0.2242	0.1701	0.1973	0.1164
Ni	0.0346	3.1985	0.1551	0.5727	0.501	0.1743	0.463	0.3937	0.4598	0.3901
Cu	0.0205	11.9682	0.1905	1.487	0.196	0.05621	0.1833	0.2043	0.1251	0.1508
Zn	3.4920	37.0259	19.39	92.09	10.85	3.764	9.947	8.266	14.41	4.432
Ga	0.0088	0.3675	0.01646	0.02729	0.02838	0.01151	0.02369	0.01904	0.03046	0.01567
As	0.6363	4.4664	0.5538	1.019	0.8607	0.5027	1.126	1.064	1.164	0.7712
Rb	0.2138	2.1338	0.03134	0.238	0.06173	0.247	0.01869	0.04349	0.02535	0.2149
Sr	0.4694	25.7905	0.7316	12.15	4.512	2.63	5.247	5.754	4.2	1.698
Zr	0.0248	0.3216	0.04243	0.05888	0.0788	0.04813	0.1476	0.1326	0.1119	0.1737
Nb	<d.l.	0.3837	0.08261	<d.l.	0.01182	<d.l.	0.03668	0.03654	0.03807	0.02549
Mo	0.0025	0.1326	0.03628	0.01366	0.01331	0.007339	0.008744	0.01715	0.0202	0.01983
Cd	0.0318	0.1317	0.02775	0.09719	0.02897	0.0173	0.05732	0.04706	0.06959	0.01113
Sn	0.0048	0.1934	0.04984	0.04302	0.02569	0.005241	0.03037	0.02776	0.03091	0.01897
Sb	0.0554	0.2186	0.06987	0.1403	0.06907	0.04791	0.07202	0.06463	0.09345	0.03069
Te	0.0094	0.0518	0.02234	0.01623	0.01123	0.008071	0.009885	0.01179	0.02036	0.005862
Cs	0.0079	0.1121	0.005694	0.01825	0.01233	0.01213	0.002338	0.004857	0.003459	0.01918
Ba	0.2420	12.68	1.112	17.05	7.764	0.9769	6.005	9.721	8.129	2.642
La	0.0049	0.2328	0.007368	0.03092	0.03087	0.01338	0.01625	0.01431	0.005189	0.01837
Ce	0.0155	0.3935	0.01734	0.07729	0.08018	0.0255	0.04419	0.03697	0.0114	0.0551
Pr	0.0020	0.0459	0.004164	0.00933	0.009527	0.002394	0.006144	0.005077	0.002434	0.006962
Nd	0.0112	0.1871	0.01454	0.03912	0.03965	0.01347	0.03044	0.024	0.01147	0.03322
Sm	0.0035	0.0558	0.003335	0.009196	0.01132	0.003767	0.01285	0.007637	0.005417	0.008954
Eu	0.0013	0.0105	0.002256	0.003513	0.002962	0.001118	0.004543	0.003554	0.001998	0.002757
Gd	0.0053	0.0534	0.004548	0.008419	0.01066	0.005306	0.01929	0.01384	0.006133	0.01006
Dy	0.0037	0.0412	0.002888	0.006232	0.01055	0.006451	0.02451	0.01959	0.005522	0.01042
Ho	0.0009	0.0065	0.00167	0.0009271	0.001907	0.001225	0.005745	0.004432	0.001264	0.002451
Er	0.0018	0.0200	0.002515	0.002398	0.005756	0.003488	0.0149	0.0119	0.003345	0.007297
Tm	0.0003	0.0031	0.001744	0.0003545	0.0009747	0.0006023	0.001989	0.001821	0.0009912	0.001328
Yb	0.0011	0.0193	0.002611	0.002903	0.003661	0.00234	0.009494	0.007262	0.0025	0.006299
Lu	0.0001	0.0037	0.001635	0.0004022	0.0007635	0.0002101	0.001544	0.001629	0.0008242	0.001166
Hf	0.0026	0.1342	0.01737	0.004637	0.006417	0.002773	0.01541	0.01322	0.01254	0.01179
W	0.0025	0.0917	0.07536	0.01051	0.01344	0.00138	0.0193	0.02287	0.02597	0.01692
Pb	0.2531	4.8272	0.2277	1.467	0.6367	2.422	0.4823	0.3181	0.464	0.201
Th	0.0005	0.0853	0.00481	0.003635	0.01036	0.001964	0.01223	0.009649	0.005784	0.01277
U	0.0010	0.0956	0.002967	0.005075	0.003987	0.001343	0.003562	0.002807	0.001097	0.004145

ESM-2, continued.

Element	Z-12	Z-13	Z-14	Z-15	Z-16	Z-17	Z-18	Z-19	Z-20	Z-21
B	4.907	5.09	4.782	3.308	6.215	1.797	3.069	4.795	7.363	3.831
Na	333.7	320.4	53.42	18.87	650.8	169.3	93.2	499.9	531.5	301.1
Mg	260.8	202.3	175.4	89.24	761.4	95.3	191.2	212.4	694.5	80.14
Al	141.9	190.7	66.18	45.38	76.76	49.46	56.39	109.3	299.4	123.3
Si	n.d	143	n.d.	n.d.	69	16.4	n.d.	n.d.	257	n.d.
P	9.188	31.59	4.042	2.303	20	3.901	5.238	12.08	78.66	4.699
K	24.05	23.35	14.99	7.445	293.1	57.72	43.61	18.43	84.56	21.02
Ca	378	335.6	340.5	111.6	328.7	187.2	212.3	338.6	887.7	159
Ti	1.144	2.289	0.4055	0.7015	1.402	0.62	0.953	0.9018	3.619	1.296
V	0.3422	0.5061	0.1746	0.3225	0.6154	0.3084	0.2034	0.306	0.7548	0.1734
Cr	0.5308	0.7258	0.2256	0.4217	0.9545	0.1763	0.1862	0.2527	0.8555	0.2996
Mn	19.9	13.05	25.51	8.101	14.77	8.122	15.43	20.64	53.76	14.6
Fe	456.6	618.4	191.4	53.79	54.85	76.54	117.6	161.6	375.7	134
Co	0.2214	0.2341	0.1245	0.02497	0.08916	0.04806	0.09001	0.102	0.2533	0.1476
Ni	0.4151	0.5863	0.1119	0.1176	2.766	0.1213	0.1334	0.1866	0.6683	0.2132
Cu	0.1904	0.3466	0.02042	0.144	6.422	0.1958	0.02906	0.1002	0.7713	0.304
Zn	6.706	23.26	8.4	13.19	32.88	20.74	4.673	4.416	19.37	2.577
Ga	0.02618	0.04609	0.01133	0.01824	0.02359	0.009071	0.01486	0.01904	0.05833	0.01425
As	1.161	1.307	0.5736	0.5853	0.8386	0.3771	0.4625	0.6231	1.707	0.7361
Rb	0.1274	0.101	0.02467	0.01092	0.7694	0.1705	0.06361	0.03217	0.08124	0.08614
Sr	4.096	2.822	3.59	0.89	0.8629	2.666	2.661	4.1	9.438	1.109
Zr	0.1164	0.1561	0.02536	0.03998	0.07344	0.05515	0.03557	0.06684	0.1802	0.1024
Nb	0.04044	0.01814	0.00395	0.03405	0.008718		0.01317	<d.l.	0.01624	0.08948
Mo	0.01914	0.009076	0.007897	0.01357	0.264	0.0104	0.005849	0.003632	0.01605	0.04413
Cd	0.03557	0.03012	0.02815	0.01579	0.04681	0.009009	0.02733	0.02494	0.08421	0.03508
Sn	0.02661	0.04908	0.003382	0.0275	0.1051	0.02087	0.0118	0.003396	0.05109	0.04402
Sb	0.08536	0.08858	0.04518	0.06862	0.1343	0.0373	0.05621	0.04954	0.08083	0.07964
Te	0.01326	0.009473	0.007356	0.01245	0.01976	0.01178	0.009449	0.01271	0.01644	0.01923
Cs	0.02881	0.02926	0.003371	0.004787	0.03374	0.005786	0.008856	0.002252	0.01823	0.00832
Ba	3.382	2.011	2.518	1.21	1.923	4.548	2.773	4.596	7.974	1.3
La	0.03071	0.01814	0.005612	0.005994	0.03049	0.01787	0.008178	0.02538	0.03326	0.03853
Ce	0.0766	0.05846	0.01515	0.02334	0.05386	0.03333	0.0202	0.03347	0.08214	0.09764
Pr	0.009764	0.008013	0.002125	0.004038	0.006244	0.003758	0.003106	0.003909	0.009619	0.01302
Nd	0.043	0.03471	0.008615	0.01858	0.02398	0.0178	0.01627	0.01845	0.04612	0.05261
Sm	0.008999	0.0071	0.00299	0.005508	0.005396	0.005271	0.006238	0.004796	0.01204	0.01421
Eu	0.002772	0.001873	0.001062	0.002237	0.00156	0.001546	0.002106	0.002165	0.003611	0.005539
Gd	0.007282	0.009967	0.004426	0.007318	0.007543	0.007891	0.005957	0.007176	0.0141	0.01712
Dy	0.007357	0.007604	0.00318	0.007119	0.0043	0.005855	0.006442	0.007565	0.0147	0.01926
Ho	0.001788	0.001765	0.0006856	0.001768	0.0005253	0.001155	0.001504	0.001397	0.003219	0.005844
Er	0.004125	0.004428	0.001951	0.003032	0.001945	0.003653	0.003214	0.004567	0.009883	0.01444
Tm	0.00107	0.0008452	0.0004401	0.0008352	0.0002942	0.0006323	0.0006789	0.000803	0.001256	0.003212
Yb	0.003703	0.003515	0.001308	0.002606	0.0007924	0.002731	0.002628	0.004085	0.005728	0.0108
Lu	0.000762	0.0007175	0.0004173	0.0006256	0.0004183	0.0005456	0.000736	0.0004972	0.0009501	0.00272
Hf	0.01343	0.01027	0.003708	0.006952	0.006787	0.002476	0.004631	0.003981	0.005726	0.01987
W	0.02564	0.012	0.006946	0.02486	0.02524	0.006685	0.01583	0.004362	0.01562	0.08234
Pb	0.3734	0.6508	0.1085	0.2868	0.4937	0.2036	0.1713	0.1403	0.7902	0.5237
Th	0.009502	0.01467	0.001085	0.002235	0.004285	0.003751	0.002225	0.007497	0.02441	0.01478
U	0.004404	0.005833	0.001277	0.001427	0.003814	0.002811	0.001799	0.002815	0.01015	0.00828

ESM-2, continued.

Element	Z-22	Z-23	Z-24	Z-25	Z-26	Z-27	Z-28	Z-29	Z-30	Z-31
B	3.917	2.286	4.186	2.039	2.619	3.875	3.971	6.196	7.369	4.204
Na	323.9	246	885.7	8.701	386.4	202.2	33.09	362.5	1064	556.1
Mg	101.1	94.43	411.6	52.68	155.4	92.4	95.25	152.2	184.2	191
Al	162.2	84.17	42.68	51.52	173.1	88.99	40.93	235.8	200.2	114.6
Si	8	877	22.3	n.d.	43	n.d.	n.d.	114	3361	172
P	21.2	5.148	5.909		13.37	6.156	2.237	11.7	17.36	11.63
K	463.1	30.54	170.2	8.609	102.5	30.57	14.28	594.4	492.3	132.1
Ca	198.3	282.1	645.7	117.9	411.3	141.4	156.3	236.2	600.3	411.4
Ti	1.849	0.7781	1.287	0.6694	4.915	1.247	0.505	2.061	2.756	0.9641
V	0.6198	0.2801	0.2098	0.251	1.553	0.2383	0.1916	1.192	3.007	0.3868
Cr	0.5118	0.2205	0.2099	0.2985	0.5048	0.37	0.2203	0.9409	1.433	0.355
Mn	8.087	25.76	18.06	6.075	16.8	9.237	10.26	9.517	4.101	19.64
Fe	374.4	639.6	280.4	159.5	176.9	142.3	66.56	427.9	998.2	478.4
Co	0.06314	0.08233	0.03566	0.03088	0.08973	0.0505	0.04147	0.2086	0.1129	0.1153
Ni	0.47	0.1559	0.159	0.1446	0.2783	0.1701	0.09963	0.4698	1.3	0.2535
Cu	1.404	0.04428	0.2187	0.168	0.5442	0.07196	0.0963	1.245	2.562	0.4011
Zn	3.991	4.055	2.834	2.836	4.407	3.935	9.819	3.144	8.61	6.218
Ga	0.04823	0.01679	0.01141	0.01607	0.04198	0.02444	0.01446	0.03421	0.02524	0.02644
As	0.9963	0.5002	0.4313	0.4825	0.7922	0.6886	0.5401	1.178	1.837	0.8197
Rb	0.2661	0.11	0.2951	0.006867	0.4702	0.1731	0.03813	0.08611	0.7277	0.4545
Sr	3.835	3.52	8.754	1.137	6.802	1.087	1.144	3.478	10.09	5.877
Zr	0.1245	0.03494	0.1153	0.03897	0.3235	0.07075	0.02905	0.1823	0.4491	0.0549
Nb	0.1182	<d.l.	<d.l.	<d.l.	0.003812	0.04745	0.07849	<d.l.	0.007932	0.001581
Mo	0.03387	0.004045	0.025	0.0008768	0.0192	0.01943	0.04213	0.004605	0.09082	0.0147
Cd	0.02019	0.01374	0.006425	0.01818	0.01461	0.02262	0.02707	0.03515	0.02529	0.02019
Sn	0.08258	0.003637	0.01247	0.007449	0.02131	0.03368	0.04517	0.01293	0.04165	0.01609
Sb	0.06634	0.0165	0.03297	0.0567	0.08226	0.04979	0.05486	0.06037	0.06204	0.1031
Te	0.01656	0.00144	0.01239	0.01325	0.005417	0.02462	0.02152	0.01299	0.008398	0.01227
Cs	0.03598	0.01028	0.01038	0.002245	0.02395	0.02492	0.007227	0.01577	0.02208	0.03051
Ba	1.809	5.554	4.334	1.209	7.647	1.121	2.117	2.795	5.285	5.027
La	0.04971	0.02506	0.04612	0.007272	0.04727	0.0152	0.008136	0.299	0.1778	0.02694
Ce	0.1045	0.05877	0.118	0.02246	0.1075	0.04555	0.01829	0.8931	0.4944	0.04467
Pr	0.01392	0.006744	0.01439	0.003237	0.01268	0.00655	0.004211	0.1074	0.06207	0.005619
Nd	0.06308	0.03098	0.06463	0.01599	0.06412	0.02884	0.01498	0.5195	0.2913	0.02335
Sm	0.01612	0.006896	0.01459	0.005192	0.01303	0.007318	0.006393	0.1273	0.06727	0.007107
Eu	0.005096	0.002755	0.003341	0.001095	0.004019	0.002201	0.002511	0.02935	0.01593	0.002236
Gd	0.02078	0.007582	0.01422	0.004527	0.01464	0.006287	0.006131	0.1451	0.08164	0.008243
Dy	0.02043	0.007869	0.01228	0.005191	0.01472	0.006821	0.004422	0.1301	0.06786	0.007772
Ho	0.00484	0.001616	0.002696	0.001235	0.002885	0.001777	0.002059	0.0306	0.01548	0.001559
Er	0.01237	0.004	0.008121	0.002346	0.00974	0.003614	0.002714	0.09281	0.04872	0.005047
Tm	0.002032	0.0008206	0.00102	0.0004236	0.001504	0.001091	0.00145	0.01405	0.008448	0.0007816
Yb	0.009194	0.003771	0.006849	0.002922	0.008161	0.002537	0.002099	0.09061	0.05232	0.004402
Lu	0.002037	0.0006241	0.001283	0.0001608	0.001554	0.001241	0.00171	0.01408	0.00938	0.0007164
Hf	0.03051	0.001927	0.005797	0.002037	0.01132	0.009775	0.01175	0.007739	0.01996	0.005723
W	0.05187	0.003651	0.002186	0.0027	0.003632	0.04129	0.07701	0.002811	0.01285	0.007846
Pb	1.962	0.2049	0.2009	0.2672	0.1655	0.5275	1.01	1.283	0.8935	0.2244
Th	0.02366	0.001829	0.007692	0.001756	0.01595	0.008888	0.002702	0.02019	0.01741	0.004733
U	0.009534	0.002324	0.006657	0.0007109	0.006716	0.003435	0.002381	0.0142	0.01447	0.004223

ESM-2, continued.

Element	Z-32	Z-33	Z-34	Z-35	Z-36	Z-37	Z-38	Z-39	Z-40	Z-41	Z-42
B	4.829	6.552	3.836	9.733	3.852	1.896	1.886	1.81	3.653	4.407	9.088
Na	368.6	519.1	257.8	437.8	150.9	313	297	224	40.82	299.2	3259
Mg	165.1	345.3	165.6	385.9	163	77	73.14	62.76	137.7	180.7	2651
Al	230.2	174	67.17	184.9	118.7	147.6	121.8	89.52	43.36	43.56	9.354
Si	n.d.	29.3	10.5	159	48	108	33.8	24	6	12.6	7662
P	39.92	17.08	7.461	13.43	19.44	12.64	9.414	10.34	3.343	3.477	24.73
K	14.99	7.994	17.14	70.03	58.49	138.6	127	48.03	19.54	16.56	482.8
Ca	306	548	200.8	914.5	311	161.3	155	180	168	461.1	4434
Ti	3.294	1.58	0.779	1.442	1.298	4.029	3.039	1.144	0.7457	0.279	1.253
V	0.6807	0.4166	0.2589	0.2655	0.2446	1.386	1.151	0.3384	0.2013	0.1689	0.2397
Cr	0.7609	0.5905	0.2259	0.4037	0.3202	0.4258	0.3443	0.3591	0.2188	0.1732	0.2447
Mn	12.69	24.61	13.98	21.53	12.15	10.08	9.587	10.37	14.5	15.94	11.84
Fe	416.4	302.9	102.1	613.1	206.3	193.4	95.95	286.6	65.63	246	543.5
Co	0.1246	0.2935	0.1484	0.1775	0.1261	0.08142	0.1108	0.1414	0.09604	0.1406	0.08549
Ni	0.6818	0.4263	0.2344	0.1904	0.2946	0.2956	0.1883	0.3384	0.119	0.1931	0.4922
Cu	0.4599	0.1433	0.1289	0.7562	0.1078	0.4601	0.1564	0.09631	0.129	0.1705	0.09428
Zn	4.996	14.05	5.818	20.88	9.875	3.963	3.228	5.624	10.18	10.79	1.413
Ga	0.05586	0.02646	0.01444	0.03583	0.02901	0.03621	0.02517	0.01661	0.009503	0.003597	0.004099
As	1.443	1.308	0.5678	1.102	0.6575	0.7596	0.6827	0.604	0.6122	0.9644	0.4176
Rb	0.112	0.02638	0.04202	0.2547	0.1456	0.5203	0.4893	0.1468	0.03517	0.08232	0.6733
Sr	3.584	5.391	2.802	12.66	2.835	2.467	2.298	2.091	1.561	5.384	44.34
Zr	0.2153	0.09575	0.04558	0.02042	0.05387	0.2819	0.2164	0.1471	0.02138	0.01935	0.04115
Nb	0.0247	0.01135	0.04627	0.002794	<d.l.	0.03169	0.01623	0.09473	<d.l.	<d.l.	0.0231
Mo	0.01406	0.005692	0.02737	0.005374	0.008371	0.04529	0.02911	0.05107	0.005219	-0.0006933	0.02547
Cd	0.03428	0.06098	0.02564	0.04019	0.02898	0.008848	0.01406	0.01559	0.04052	0.01432	0.002428
Sn	0.131	0.1098	0.072	0.02164	0.3826	0.1324	0.1808	0.07407	0.1826	1.385	0.1088
Sb	0.1428	0.2178	0.1536	0.1149	0.1278	0.09108	0.1649	0.1216	0.1548	0.1911	0.05655
Te	0.01574	0.0118	0.01386	0.01399	0.009901	0.01008	0.01021	0.01294	0.01097	0.006697	0.004958
Cs	0.03108	0.004034	0.002773	0.02266	0.01429	0.02404	0.01964	0.0114	<d.l.	0.01078	0.004354
Ba	9.96	9.745	4.495	6.472	4.528	5.302	4.675	5.307	2.779	8.937	8.173
La	0.03396	0.01627	0.01121	0.03666	0.01644	0.04713	0.0316	0.03952	0.002755	0.004793	0.02204
Ce	0.09076	0.0474	0.02515	0.0994	0.04156	0.1095	0.06983	0.09851	0.01308	0.01104	0.0468
Pr	0.01076	0.005595	0.003783	0.01206	0.005156	0.01277	0.01033	0.01293	0.002308	0.0013	0.007041
Nd	0.04893	0.02907	0.01383	0.05328	0.02265	0.05324	0.0411	0.04935	0.01417	0.005513	0.03249
Sm	0.01223	0.009669	0.006553	0.01091	0.006542	0.0156	0.009665	0.01239	0.00528	0.001382	0.006608
Eu	0.004585	0.003662	0.002615	0.003306	0.001615	0.004019	0.002764	0.004696	0.001268	0.001329	0.00266
Gd	0.01963	0.01234	0.00865	0.01113	0.005388	0.01723	0.01116	0.01382	0.004291	0.001411	0.006936
Dy	0.02152	0.01446	0.01118	0.009842	0.004813	0.01421	0.01206	0.01493	0.005364	0.002229	0.007673
Ho	0.004541	0.003244	0.00301	0.00157	0.001303	0.003363	0.002389	0.00396	0.001025	0.0004664	0.002035
Er	0.01261	0.008667	0.006412	0.004077	0.002824	0.009829	0.007568	0.009608	0.002458	0.001039	0.005476
Tm	0.001572	0.001398	0.001492	0.0008938	0.0005001	0.001858	0.001326	0.00226	0.0002328	0.0001404	0.001181
Yb	0.007783	0.006013	0.005844	0.004309	0.002296	0.009946	0.005825	0.007322	0.001916	0.0001727	0.005833
Lu	0.001311	0.000836	0.001467	0.0006597	0.0003909	0.00172	0.001203	0.002205	0.0001896	0.0002293	0.001292
Hf	0.01181	0.006709	0.008033	0.00492	0.003685	0.01676	0.01327	0.02853	0.002383	0.001984	0.007228
W	0.0155	0.009624	0.04527	0.007114	0.004451	0.01905	0.01309	0.08023	0.0007758	0.001862	0.02655
Pb	0.9815	0.5784	0.1797	0.9819	0.3605	0.1386	0.1393	0.2101	0.2523	0.07144	0.08407
Th	0.02482	0.008816	0.003863	0.002527	0.00611	0.01697	0.008974	0.01787	0.001958	0.001604	0.002675
U	0.00708	0.003392	0.002408	0.0108	0.002816	0.005675	0.003163	0.006214	0.0005713	0.0003476	0.003854