

Supplementary material

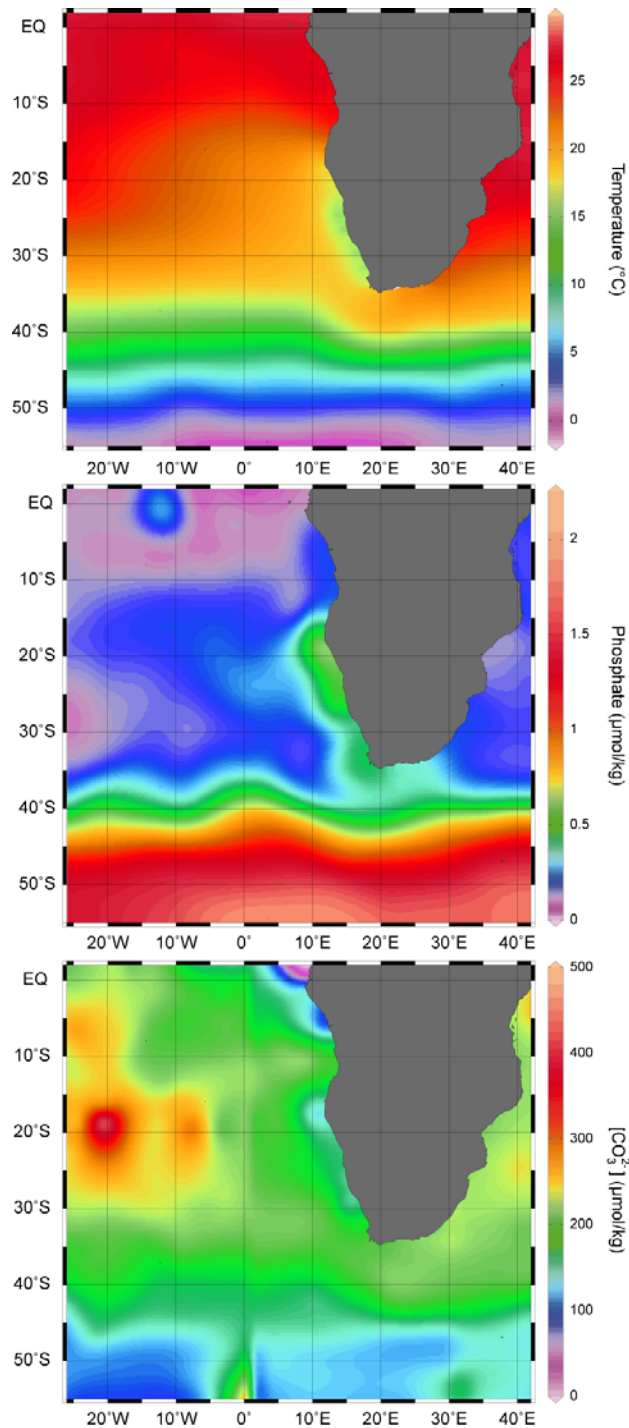


Figure S1. Map of the South Atlantic Ocean with color-coded distribution pattern of (a) sea surface temperature (SST) from WOA 2009 database (b) phosphate concentration from WOCE Global Hydrographic Climatology database (Gouretski and Koltermann, 2004), and (c) carbonate ion concentration $[\text{CO}_3^{2-}]$ from the Global Alkalinity and Total Dissolved Carbon Estimates database (Goyet et al., 2000), processed with ODV software (Schlitzer, 2009).

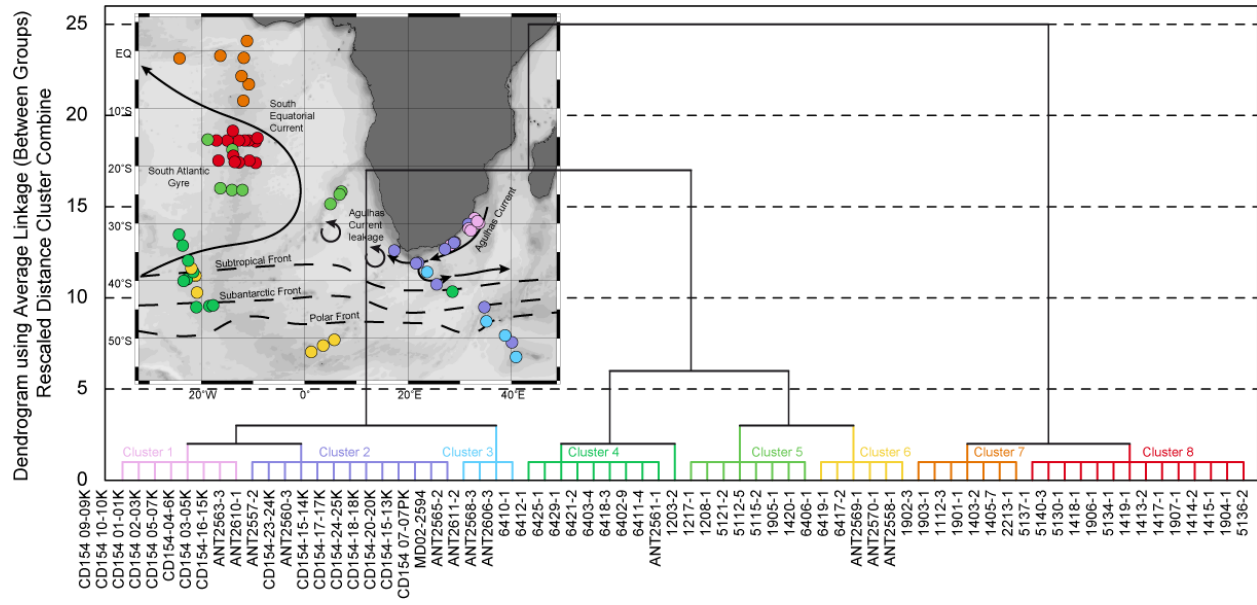


Figure S2. Cluster analysis performed on *E. huxleyi* mass only. The map represents the distribution of the clusters.