

Supplementary Information

Title: Nitrous Oxide (N₂O) production in axenic *Chlorella vulgaris* cultures: evidence, putative pathways, and potential environmental impacts.

Authors: Benoit Guieysse, Maxence Plouviez, Marie Coilhac, Laurent Cazali

S1 – N₂O emissions during *C. vulgaris* cultivation in a 50 L photobioreactor

S2 - Genomic analysis

S3 - Effect of nitrite addition on N₂O emissions during *C. vulgaris* cultivation in a closed photobioractor

S4 - Effect of NR repression, L-arginine and LNNA on N₂O production by *C. vulgaris*

S5 - Impact of age cell on N₂O emission by *C. vulgaris*

S6 - N₂O emission during outdoor *C. vulgaris* cultivation and its impacts.

9 Figures

2 Tables

17 Pages

S1 – N₂O emissions during *C. vulgaris* cultivation in a 50 L photobioreactor

C. vulgaris was cultivated in a buffered BG 11 medium containing (g L⁻¹ of distilled water) NaNO₃ (1.5), K₂HPO₄ (3.1), KH₂PO₄ (1.52), MgSO₄·7H₂O (0.075), CaCl₂·2H₂O (0.036), citric acid (0.006), ammonium ferric citrate (0.006), EDTA (0.001), and 1 mL of a trace element solution containing (g L⁻¹ of distilled water) H₃BO₃ (2.86), MnCl₂·4H₂O (1.81), ZnSO₄·7H₂O (0.222), CuSO₄·5H₂O (0.079), Na₂MoO₄·2H₂O (0.39), Co(NO₃)₂·6H₂O (0.0494).

C. vulgaris was inoculated in a column photobioreactor filled with 50 L of buffered BG11 medium. The reactor design, operation, and monitoring are described by Béchet et al. (2013) with the difference that this reactor was operated indoors and was therefore submitted to artificially continuous illumination at 260 W m⁻² (average of 40 measurements taken at 5 different heights and 8 different angular positions, Light adapter EXTECH 401020, using a conversion factor of 2.7 W PAR m⁻² per klux) using 16 light tubes (Philips TLD 58W/865 Cool Daylight). Nitrite concentration was measured by ionic chromatography and N₂O concentration in inlet and outlet samples were measured by GC-ECD. To provide mixing and CO₂, moisturized air enriched at 2.5% CO₂ was continuously bubbled at the base of the fluid column at a flow of 1.2 L min⁻¹. As can be seen in Figure S1-1, N₂O specific production rate averaged 24 ± 10 nmol N₂O g-DW⁻¹ h⁻¹ during the monitoring period (p = 0.05, n = 10).

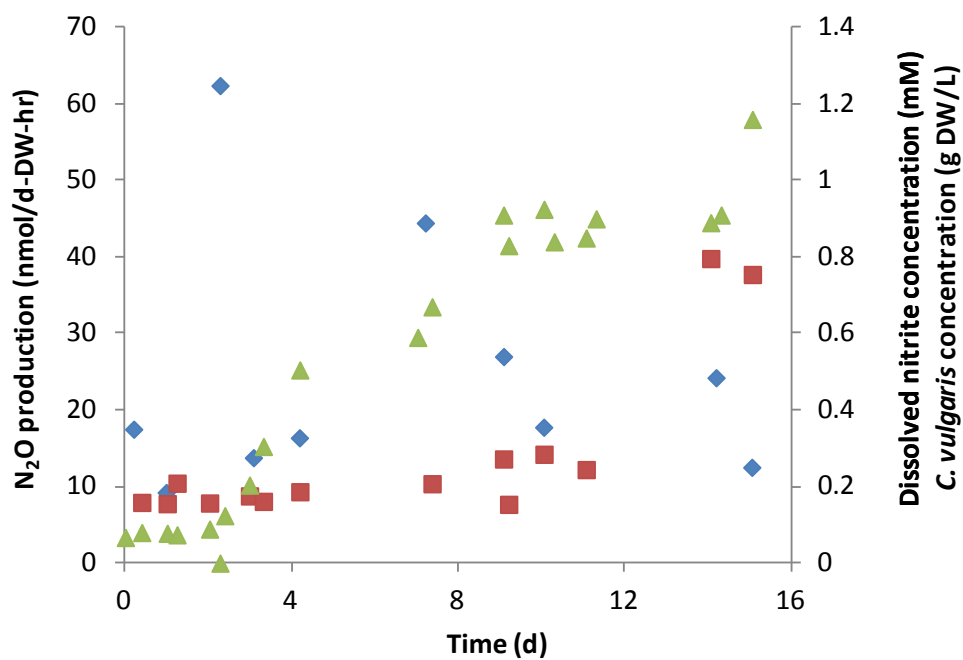


Figure S1-1: N₂O production (diamonds), dissolved nitrite concentration (squares) and *C. vulgaris* concentration (triangles) in a 50L column photobioreactor submitted to continuous illumination.

This experiment was repeated and the results are shown in Figure S1-2. N₂O specific production averaged 58 ± 23 nmol N₂O g-DW⁻¹ h⁻¹ during the monitoring period ($p = 0.05$, $n = 8$).

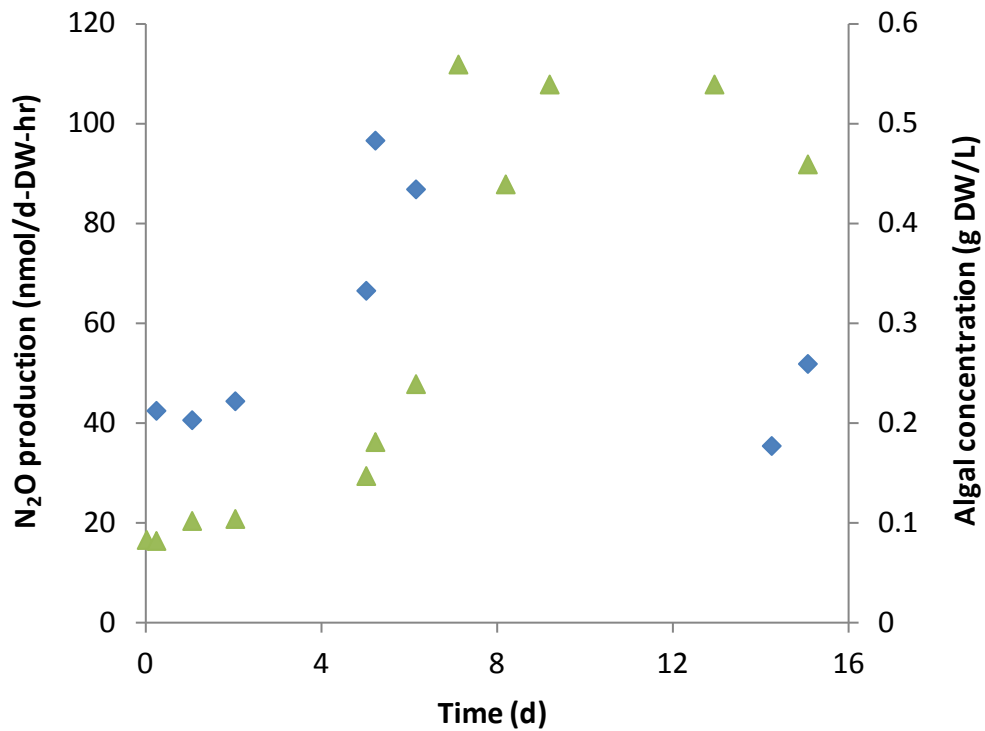


Figure S1-2: N₂O production (diamonds), and *C. vulgaris* concentration (triangles) in a 50 L column photobioreactor submitted to continuous illumination.

References:

Béchet, Q.; Muñoz, R.; Shilton, A.; Guieysse, B. Outdoor cultivation of temperature-tolerant *Chlorella sorokiniana* in a column photobioreactor under low power-input. *Biotechnol. Bioeng.* **2013** 110 (1), 118-126.

S2 - Genomic analysis

Table S1-1: Primers and conditions using during PCR analysis

Gene	Primers	Sequence	expected size	PCR conditions
norB	norB1F	CGNGARTTYCTSGARCARCC	670 bp	95°C - 5 min [95°C - 30 s, 54°C - 45 s, 68°C - 45 s] × 35 cycles 68°C - 7 min, 10°C hold.
	norB8R	CRTADGCVCCRWAGAAVGC		
cnorB	cnorBF	GACAAGNNNTACTGGTGGT	389 bp	(Fagerstone et al., 2011)
	cnorBR	GAANCCCCANACNCCNGC		
qnorB	qnorBF	GGNCAYCARGGNTAYGA	262 bp	
	qnorBR	ACCCANAGRTGNACNACCCACCA		
rbcl	rbclAF	ATGTCACCACAAACAGAGACTAAAGC	1.2 Kbp	94°C - 3 min [94 °C – 30 s, 53°C – 30 s, 72°C – 90 sec] × 35 cycles 72°C – 5 min, 10°C hold (Hasebe et al., 1994)
	rbclAR	GCAGCAGCTAGTTCCGGGCTCCA		
16S	F27	AGAGTTTGATCCTGGCTCAG	1 – 1.5 Kbp	94 °C – 3 min [94°C - 30 s, 50°C - 30 s, 72°C – 90 s] × 35 cycles, 72°C – 5 min, 10 °C hold (Giovannoni, 1991)
	1492R	TACGGYTACCTTGTTACGACGAC		

C. vulgaris was phototrophically-grown in ‘normal’ and ‘antibiotic-laden’ modified BG11 where 100 mg penicillin L⁻¹ of and 25 mg streptomycin L⁻¹ were added 4 days after inoculation. To determine if the protocol was indeed able to detect bacterial genes within

algae cultures, N₂O-producing denitrifying bacteria were isolated from soil and their potential for N₂O production was confirmed in batch assays.

A sample (1.7 ml) was taken from each of the following cultures: pure chlorella (Sample 1); chlorella plus antibiotics (Sample 2); chlorella plus denitrifying bacteria (50:50 vol, Sample 3); denitrifying bacteria (Sample 4). N₂O production in the presence of 12 mM nitrite under darkness was confirmed in all cultures in batch assays. Each sample was split over two tubes and spun at 13,000 g in a bench top microcentrifuge for 5 min to pellet the algae and bacteria. The supernatant was removed and the samples were stored at - 80°C. One set of samples was extracted using the Epicentre Water Metagenomic DNA Extraction Kit TM according to the manufacturer's protocol. After extraction, a band of high molecular weight genomic DNA was visible on an agarose gel for Samples 3 and 4. No band was visible for Samples 1 and 2 (a low yield of DNA is often common with alga). PCR was carried out on the extracted genomic DNA using the primers and amplification conditions in Table S1-1. Each PCR reaction contained 1X Buffer with 1.5 mM MgCl₂ (Roche Diagnostics), 250 μM each dNTP, 10pmol of each primer, 2 μl of template DNA and 1U Taq polymerase (Roche Diagnostics), in a final volume of 20 μl. Following PCR, 5 μl of reaction mix was analyzed on an agarose gel (1 or 2% (w/v) agarose in 1XTris-acetate –EDTA buffer) and visualized using SYBR-SAFE (Invitrogen) on a gel documentation system (BIORAD).

The norB, cnorB and qnorB primer pairs amplify fragments from the bacterial denitrification pathway. The rbcl primer pair amplifies a fragment of the large subunit of the ribulose-1,5-bisphosphate carboxylase oxygenase gene which is present on the chloroplast in algae, plants and cyanobacteria and in the genomes of some bacteria. The rbcl amplification was performed as a positive control to show that there was enough DNA in the samples to be

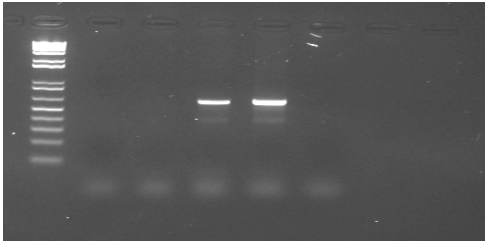
amplified. The 16S primer pair amplifies a region of the 16S rDNA in bacteria and is considered a ‘universal’ primer pair for bacteria. A negative control was included for each primer pair, this reaction contains all components except the template DNA.

Table S2-2: Results from genomic analysis (Y indicates there was a band of the expected size, N means no band of the expected size).

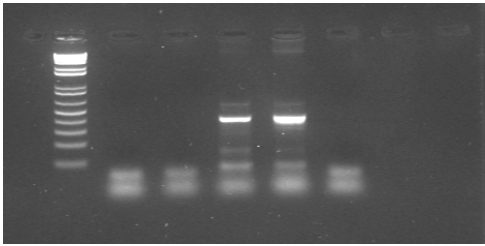
	norB	cnorB	qnorB	Rbcl
pure Chlorella	N	N*	N	Y* (1.2KB)
Chlorella plus antibiotics	N	N*	N	Y* (1.2KB)
Chlorella plus bacteria	Y	Y*	Y	Y* (1.7KB)
Bacteria	Y	Y*	Y	Y* (1.7KB)
Negative control	N	N*	N	N

* an asterisk indicates the presence of other bands which are PCR artifacts or primer dimers.

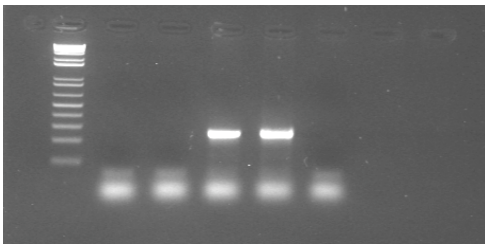
Results from PCR analysis are shown in Figure S2-1. A PCR product of the expected size was seen for each of the denitrification primer pairs in Samples 3 and 4. No PCR products were ever visible for any of the three denitrification genes in Samples 1 and 2 (Figure S2-1A, S2-1B, S2-1C) in replicate amplifications. A PCR product of the expected size (1.2 kb) for the rbcl primers was visible on a gel in samples 1 and 2. Samples 3 and 4 also produced a product from these primers but it was much larger (~ 1.7kb) and was therefore more likely a product from a bacterial genome than a product from a chloroplast gene (Figure S2-1D). When the 4 samples were amplified using the 16S primer pair, a dominant band of ~1.5kb , with a light smear down to ~1kb was seen in samples 3 and 4. There was no apparent trace of bacterial PCR products in the algae Samples 1 and 2, which confirms that N₂O emissions in these samples was caused by algae rather than associated bacteria.



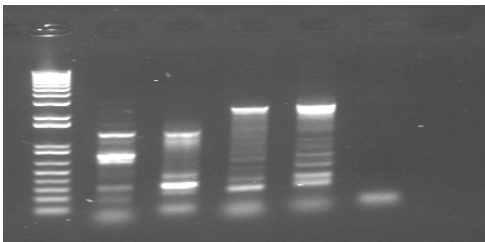
A. *.norB* on 2% (w/v) agarose, in 1XTAE



B. *.cnorB* on 2% (w/v) agarose, in 1XTAE



C. *.qnorB* on 2% (w/v) agarose, in 1XTAE



D. *.rbcl* on 1% (w/v) agarose, in 1XTAE

Figure S2-1: Results of PCR analysis viewed under UV on agarose gels. Left to right: 1kb+Ladder, algae (Sample 1), algae + antibiotics (Sample 2), algae + bacteria (Sample 3), bacteria (Sample 4), negative control.

References

Fagerstone, K. D.; Quinn, J. C.; Bradley, T. H.; De Long, S. K.; Marchese, A. J. Quantitative measurement of direct nitrous oxide emissions from microalgae cultivation. *Environ. Sci. Technol.* **2011**, 45 (21), 9449-9456.

Hasebe, M.; Omori, T.; Nakazawa, M.; Sano, T.; Kato, M.; Iwatzuki, K. rbcL gene sequences provide evidence for the evolutionary lineages of Leptosporangiate ferns. *Proc. Natl. Acad. Sci. USA* **1994**, 91, 5730–5734.

Giovannoni, S. J. Nucleic Acid Techniques in Bacterial Systematics, in *The Polymerase Chain Reaction*: Stackebrandt, E., Goodfellow, M. (eds), John Wiley and Sons. Chichester **1991**, pp 177-203

S3 - Effect of nitrite addition on N₂O emissions during *C. vulgaris* cultivation in a closed photobioreactor

C. vulgaris was cultivated in nitrate-laden buffered BG11 medium in a 4 L (working volume) cylindrical closed photobioreactor (0.195 m diameter, 0.134 working height) continuously illuminated with 14 light bulbs (OSRAM DULUXSTAR 23W/865 LUMINUX Daylight) supplying 89 W m⁻² (as PAR) at the reactor surface (average from 12 measurements taken at 3 height and 4 angular positions, Light adapter EXTECH 401020, using a conversion factor of 2.7 W PAR m⁻² per klux) and supplied with moisturized air (0.4 L min⁻¹) enriched in CO₂ (40 mL min⁻¹). The reactor was operated in a batch mode for 8 days under continuous illumination until the lights were turned off and the reactor was covered with aluminum foil (t = 0 in Figure S3-1). N₂O concentration was then periodically monitored in the gas influent and effluent.

Figure S3-1 shows the change in N₂O specific emission rates in a closed photobioreactor (darkness). As can be seen, N₂O specific production averaged 84 ± 15 nmol g DW⁻¹ h⁻¹ (p = 0.05, n = 31) prior to nitrite injection. Thereafter, N₂O emission quickly increased to stabilize around 1200 nmol g DW⁻¹ h⁻¹. These results confirm N₂O emissions are a transient response to nitrite addition.

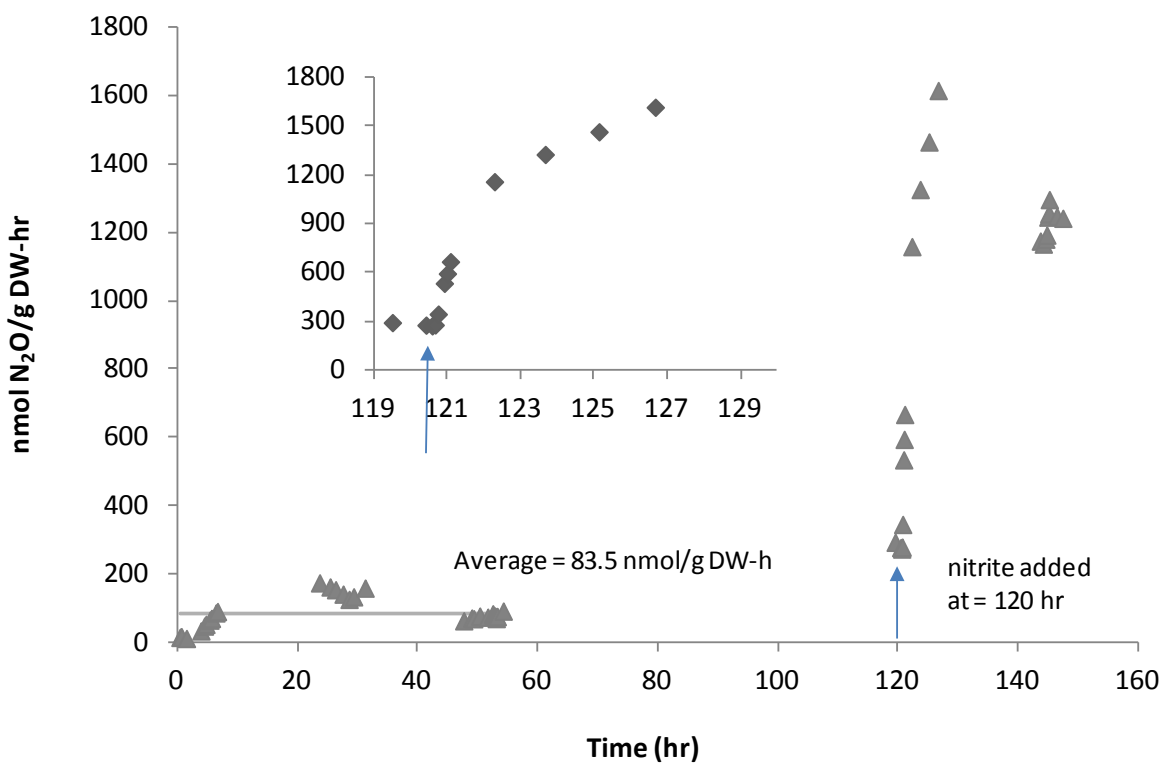


Figure S3-1: Changes in N₂O specific production rate (nmol g DW⁻¹ h⁻¹) in a 4 L column photobioreactor. NaNO₂ (1.38 g) was added after 120 h of monitoring. The concentration of algae was 1.26-1.56 g L⁻¹.

These results were confirmed in the 50 L pilot scale reactor described in S1 when ammonium was used as N-source. As can be seen in Figure S3-2, N₂O release was not detected prior to nitrite injection (13.4 mM) whereas large emissions were recorded after injection. In light of the putative pathway for N₂O synthesis proposed in this manuscript, these emissions can be explained by the fact nitrate reductase (NR) can remain active in the presence of ammonium.

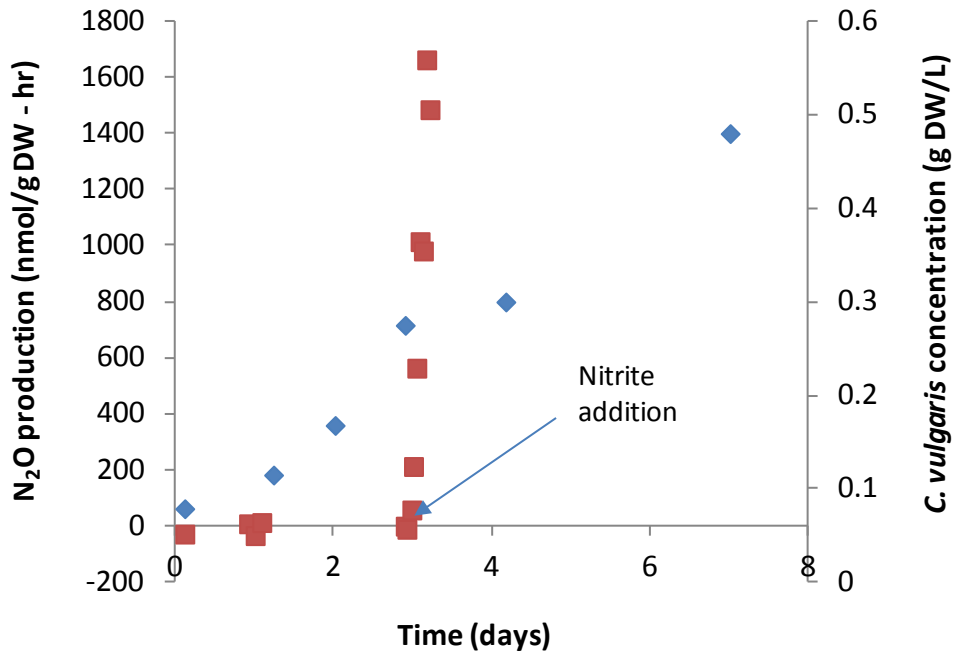


Figure S3-2: N_2O production during *C. vulgaris* cultivation in a 50 L column photobioreactor operated under continuous artificial illumination. At $t = 0$ d, the reactor was filled with NH_4^+ -laden BG11 medium and inoculated. Nitrite was added at $t = 3$ d.

S4 - Effect of NR repression, L-arginine and LNNA on N₂O production by *C. vulgaris*

Figure S4-1 shows the specific rate of N₂O emissions (nmol g DW⁻¹ h⁻¹) from 1.5 to 4.5 h after transfer into sealed flasks and/or nitrite addition. After 10 days of cultivation, aliquots of phototrophically-grown algae were centrifuged and re-suspended either in ‘normal’ buffered BG11 or in buffered BG11 where molybdate (MoO₄²⁻) was replaced by orthotungstate (WO₄²⁻) at the same relative concentration (0.253 mg Na₂WO₄ L⁻¹) as described by Deng et al. (1989). Following cultivation during 4 days, each algae culture was withdrawn, washed, and tested for N₂O emissions in its respective medium as described above (darkness).

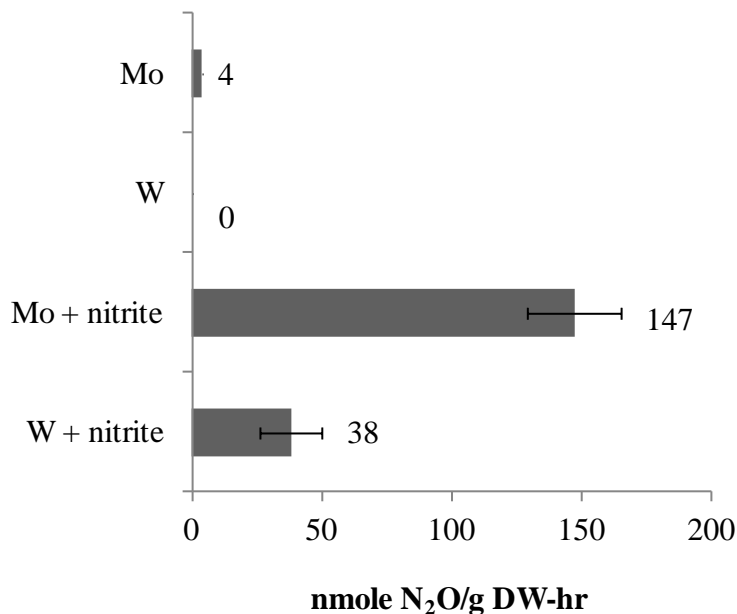


Figure S4-1: Specific rate of N₂O production from 1.5 - 4.5 h after transfer into sealed flasks and/or nitrite addition (1.34 mM), algae concentration of 0.26 g L⁻¹ (W test) and 0.28 (Mo test). Error bars show min/max values from duplicates.

Figure S4-2 shows the impact of NOS (NO synthase) substrate arginine and NOS-inhibitor N ω -nitro-L-arginine (LNNA) on N₂O production by *C. vulgaris* in the presence of nitrite. As

can be seen, there is no significant impact of L-arginine and LNNA addition on N₂O emissions.

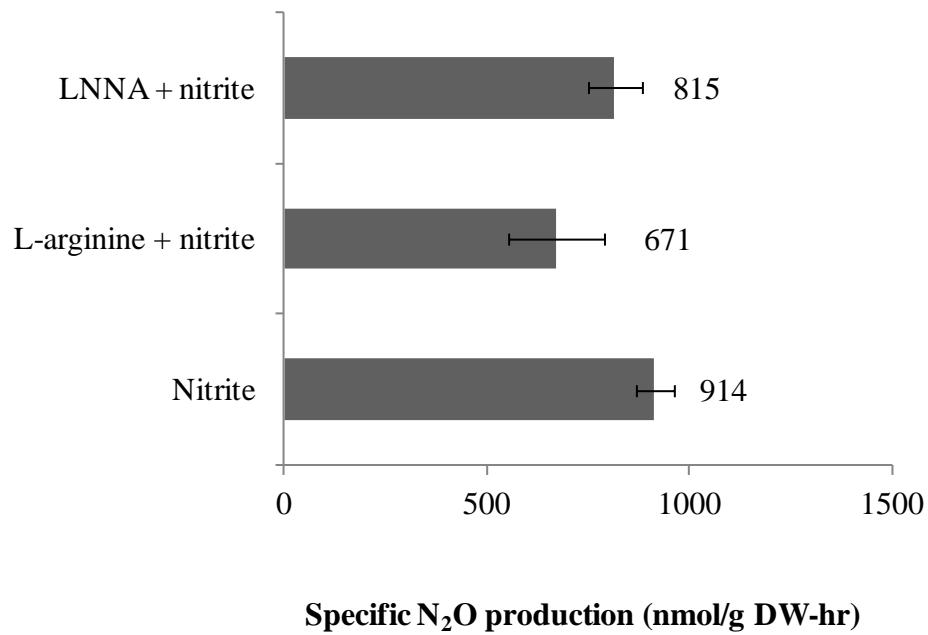


Figure S4-2: Specific rate of N₂O production from 2 - 4 hours after nitrite addition in closed serum flasks supplied with *C. vulgaris* (0.15 g DW L⁻¹), nitrite (10 mM), LNNA (10 mM) and L-arginine (10 mM).

S5 - Impact of cell age on N₂O production from *C. vulgaris* cultures

Phototrophically grown axenic *C. vulgaris* was aseptically inoculated into 250 mL E-flasks containing 125 mL of buffered BG11 and cultivated under continuous illumination and agitation. After 3, 4, 5, 6, or 7 days cultivation, algae were withdrawn from several flasks, mixed, centrifuged, and the biomass pellets were mixed and re-suspended with N-free buffered BG11 to 0.1 or 0.2 g DW L⁻¹. Then, 50 mL of *C. vulgaris* suspension and 2 mL of freshly prepared 12 mM NO₂⁻ were transferred into 120 mL glass flasks and incubated at 25 ± 2°C under continuous agitation (180 rpm) in darkness. Gas samples were withdrawn 4, 7, and 24 h after nitrite addition to quantify N₂O production.

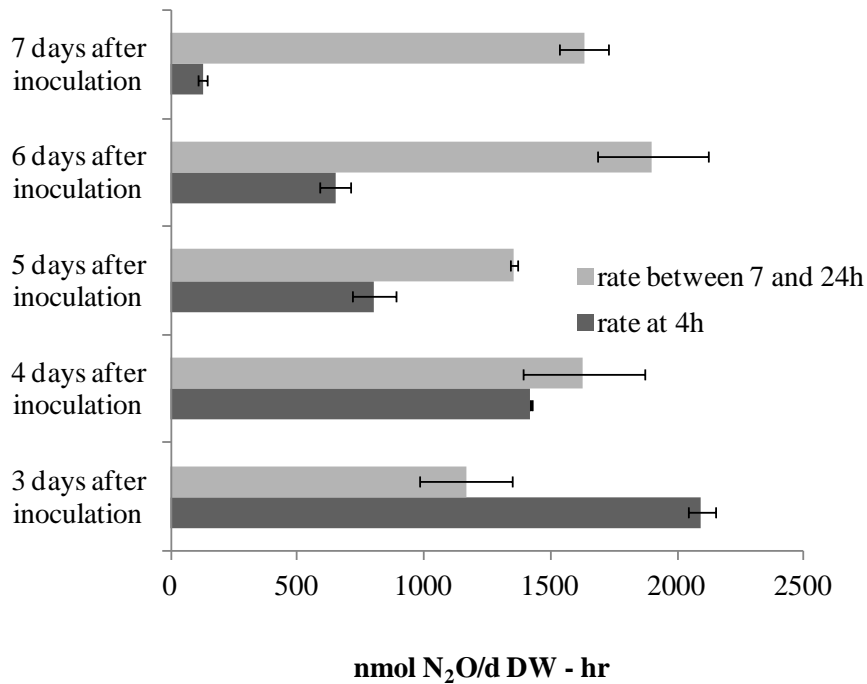


Figure S5-1: Influence of cell age on N₂O production from *C. vulgaris* cultures (12 mM nitrite, darkness, data show the average from experiments performed at 0.2 and 0.1 g algae DW L⁻¹, error bars represents max-min values).

As can be seen in Figure S5-1, the initial rate of N₂O specific emissions was inversely correlated with cell age.

S6 - N₂O emission during outdoor *C. vulgaris* cultivation and its impacts.

The 50 L photobioreactor described in S1 was operated outdoor and supplied with CO₂-enriched air (3% of CO₂) at 1 L min⁻¹. The reactor was operated in a batch mode for 6 days followed by fed-batch mode for 37 days by daily replacing 5 L of algae culture with 5 L of fresh buffered BG11 medium. The algal concentration was 0.7 - 0.8 g L⁻¹. As can be seen in Figure S6-1, N₂O specific production was found to range from 4.4 – 32.3 nmol g DW⁻¹ h⁻¹.

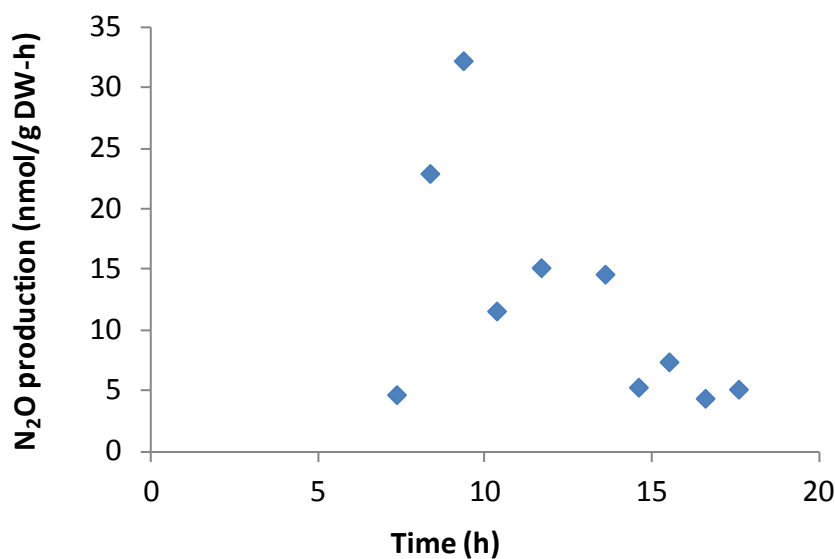


Figure S6-1: N₂O production during *C. vulgaris* cultivation in a 50 L closed photobioreactor operated outdoors (Day 44 of cultivation, May 12/2011; Palmerston North, New Zealand).

To estimate the potential impact of N₂O from ‘realistic’ algae cultivation systems we used data from Guieysse et al. (2013) who simulated algae cultivation in open ponds under various climate, design and operational regimes. As a representative scenario, we selected the case when *C. vulgaris* is cultivated in a 0.25 m deep open pond located near Merced, California (representative of a Mediterranean climate, yearly solar irradiance of 6.59 GJ m⁻² yr⁻¹) and operated at an average hydraulic retention of time of 7 days. Assuming *C. vulgaris* grows at an average net efficiency of 2.5% and has an average heat value of 24.7 kJ g DW⁻¹

(corresponding to a lipid content of 25%) yields a yearly productivity of $0.165 \text{ GJ m}^{-2} \text{ yr}^{-1}$ ($18.3 \text{ g m}^{-2} \text{ d}^{-1}$) and an average algae concentration of 512 g m^{-3} (see Guieysse et al. 2013 for references, validation and further discussion). Based on the specific production rates reported above, N_2O emission ranged from $1.38 - 10.1 \text{ kg N}_2\text{O-N ha}^{-1} \text{ yr}^{-1}$. If we then assume that 80% of the energy found in the biomass-lipids is recovered as biofuel (e.g. 20% of the total biochemical energy photosynthesized), the GHG equivalent of N_2O accounts for $1.96 - 14.4 \text{ g CO}_2\text{equivalent MJ}^{-1} \text{ fuel}$.

Reference:

Guieysse, B.; Béchet, Q.; Shilton, A. Variability and uncertainty in water demand and water footprint assessments of fresh algae cultivation based on case studies from five climatic regions. *Bioresour. Technol.* **2013**, 128, 317–323.