

Interactive
Comment

Interactive comment on “⁹⁰Sr and ⁸⁹Sr in seawater off Japan as a consequence of the Fukushima Dai-ichi nuclear accident” by N. Casacuberta et al.

N. Casacuberta et al.

nuria.casacuberta@uab.cat

Received and published: 25 April 2013

Reviewer comment 1: In order to avoid misunderstanding in the sentences like: ⁹⁰Sr ranges from ... to ... and ⁸⁹Sr ranges from ... to ... please, explain in Abstract and Results sections that ⁹⁰Sr and ⁸⁹Sr values cannot be compared because they are not measured in the same samples (57 for ⁹⁰Sr and only 19 for ⁸⁹Sr and usually in those that present the highest ⁹⁰Sr values).

Author response: This has now been clarified in the Abstract and now reads as follow: “Here we evaluate the distribution of Fukushima-derived ⁹⁰Sr (n=57) and ⁸⁹Sr (n=19) throughout waters 30-600 km offshore in June 2011.” Also in the Results section: “Concentrations of ⁹⁰Sr (n=57) and ⁸⁹Sr (n=19) in seawater samples collected. . . “.

Full Screen / Esc

Printer-friendly Version

Interactive Discussion

Discussion Paper



Reviewer comment 2: Please, explain clearly in the text if the provided ^{89}Sr values are referred to measurement date or to sampling date.

Author response: This has been included both in the text and in Table 1 caption. “All activities are referred to sampling date”.

Reviewer comment 3: I do not understand the meaning or usefulness of section “ $^{89}\text{Sr}/^{90}\text{Sr}$ ratio”. Why the “time delay between sampling and accident” is calculated if this value is known with an approximation better than 98 ± 18 , which is the value that authors obtain? Even in section 4.2, authors assume that ^{90}Sr peak has been released to the Pacific Ocean on 6 April, and sampling dates are also known. If the objective is to demonstrate that ^{89}Sr comes from Fukushima accident, in my opinion it is clear that with a half-life of 50 days, this radionuclide cannot have another origin.

Author response: We agree with the reviewer on stating that this section is not providing with new information, as the accident date is already well known. However, by calculating the time delay between sampling and accident we are providing with another way of using the $^{89}\text{Sr}/^{90}\text{Sr}$ ratio, other than the one used in Povinec et al (2012) in which they calculate the ratio at reactor. Thus we thought it was interesting to use our ^{89}Sr numbers, together with the results obtained in Povinec, to prove that ^{89}Sr was indeed coming from Fukushima, by matching the calculated delay time with the already known value. To make this clear, section 4.2 has been changed accordingly: “The $^{89}\text{Sr}/^{90}\text{Sr}$ net ratio (subtracting ^{90}Sr background concentrations) can be used to estimate the time delay between sampling and the Fukushima accident (time of nuclear reactor cease). Although the nuclear accident was well known, the ratio was used to corroborate it and thus prove the ^{89}Sr source being Fukushima NPP. Time delay calculated for each sample (Table 2) was estimated by using the following Eq (1):”

Reviewer comment 4: Table 1 and Fig 3 has very small source size, it is quite difficult to read it.

Author response: Figure 3 has been changed according to the reviewer’s suggestion

[Full Screen / Esc](#)[Printer-friendly Version](#)[Interactive Discussion](#)[Discussion Paper](#)

(see below). Regarding Table 1 we prefer having it in a single page. However, if the final edition looks too small we will ask the editors to split it in two pages.

Reviewer comment 5: The same for Figures 2 and 4 (right hand plots). It is almost impossible to read them.

Author response: Figures 2 and 4 have been changed according to the reviewer's suggestion (see below).

Reviewer comment 6: In Fig 1, Fig 2 and Fig 3 it is supposed that the grey contour corresponds to Japanese coast and the red star in Fig 1, Fukushima NPP. Please if this is true, explain it in the text.

Author response: Explanation on what the grey contour and red star stand for, has been included in Figures 1 and 2.

Interactive comment on Biogeosciences Discuss., 10, 2039, 2013.

BGD

10, C1250–C1255, 2013

Interactive
Comment

Full Screen / Esc

Printer-friendly Version

Interactive Discussion

Discussion Paper



Interactive
Comment

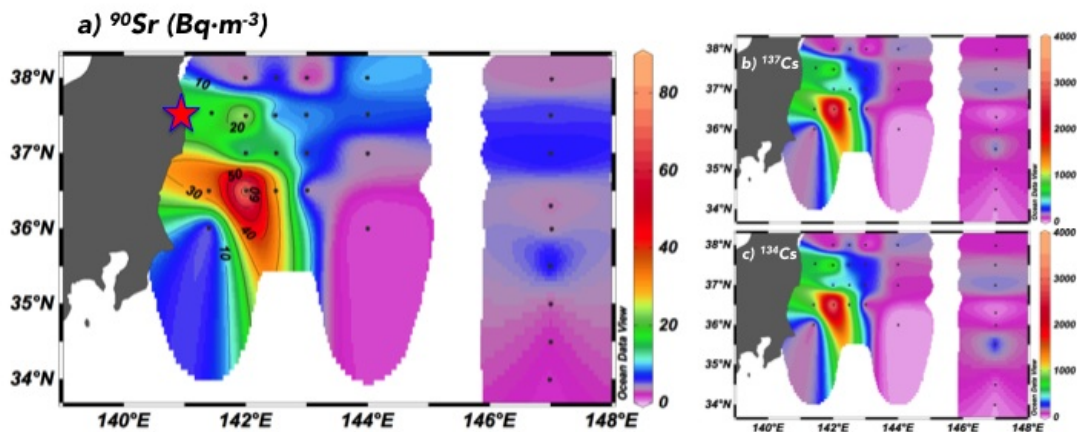


Fig. 1. Figure 2

Full Screen / Esc

Printer-friendly Version

Interactive Discussion

Discussion Paper



Interactive
Comment

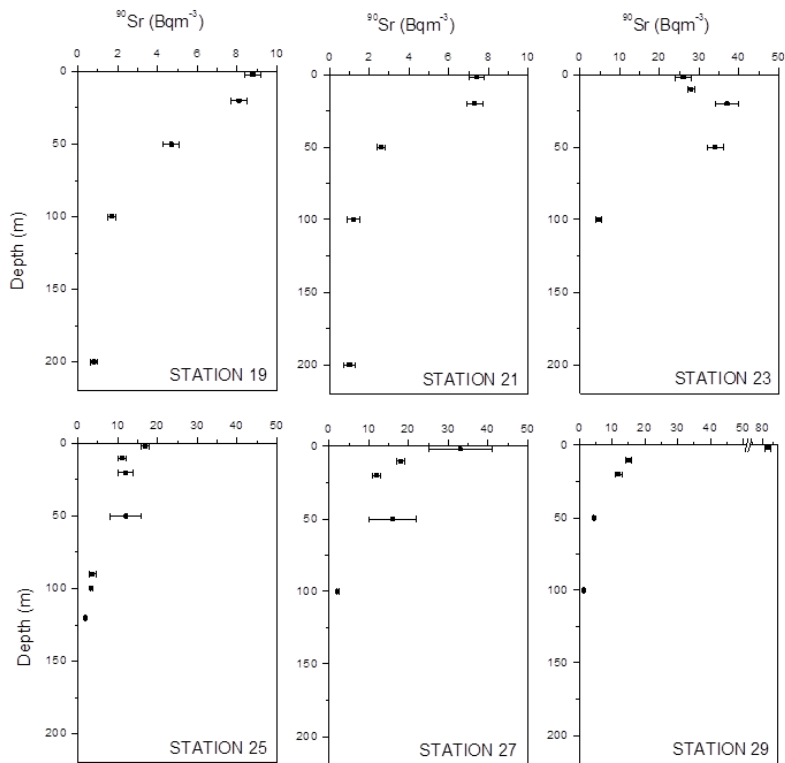


Fig. 2. Figure 3

Full Screen / Esc

Printer-friendly Version

Interactive Discussion

Discussion Paper

Interactive
Comment

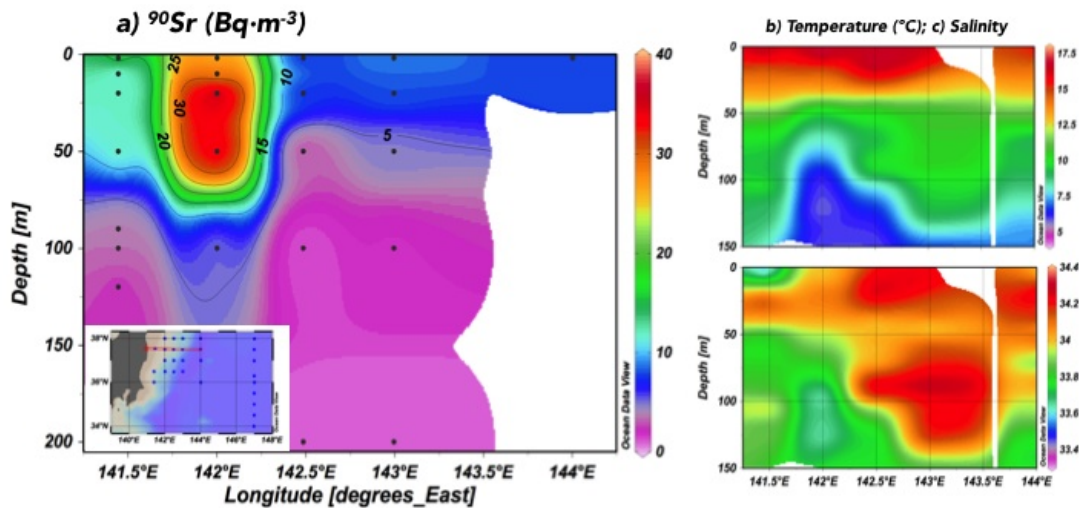


Fig. 3. Figure 4

Full Screen / Esc

Printer-friendly Version

Interactive Discussion

Discussion Paper

