

Supplementary Materials

Enhancement of photosynthetic carbon assimilation efficiency of phytoplankton assemblage in the future coastal ocean

J.-H. Kim^a, K. Y. Kim^{a*}, E. J. Kang^a, K. Lee^b, J.-M. Kim^b, K. Park^b, K. Shin^c, B. Hyun^c,
H. J. Jeong^d

^a Department of Oceanography, Faculty of Earth System & Environmental Science, Chonnam National University, Gwangju, 500-757, Korea

^b Pohang University of Science and Technology, School of Environmental Science and Engineering, Pohang, 790-784, Republic of Korea

^c Korea Ocean Research and Development Institute/South Sea Institute, Jangmok, 656-830, Republic of Korea

^d School of Earth and Environmental Sciences, College of Natural Sciences, Seoul National University, Seoul, 151-747, Korea

*Corresponding author: kykim@chonnam.ac.kr

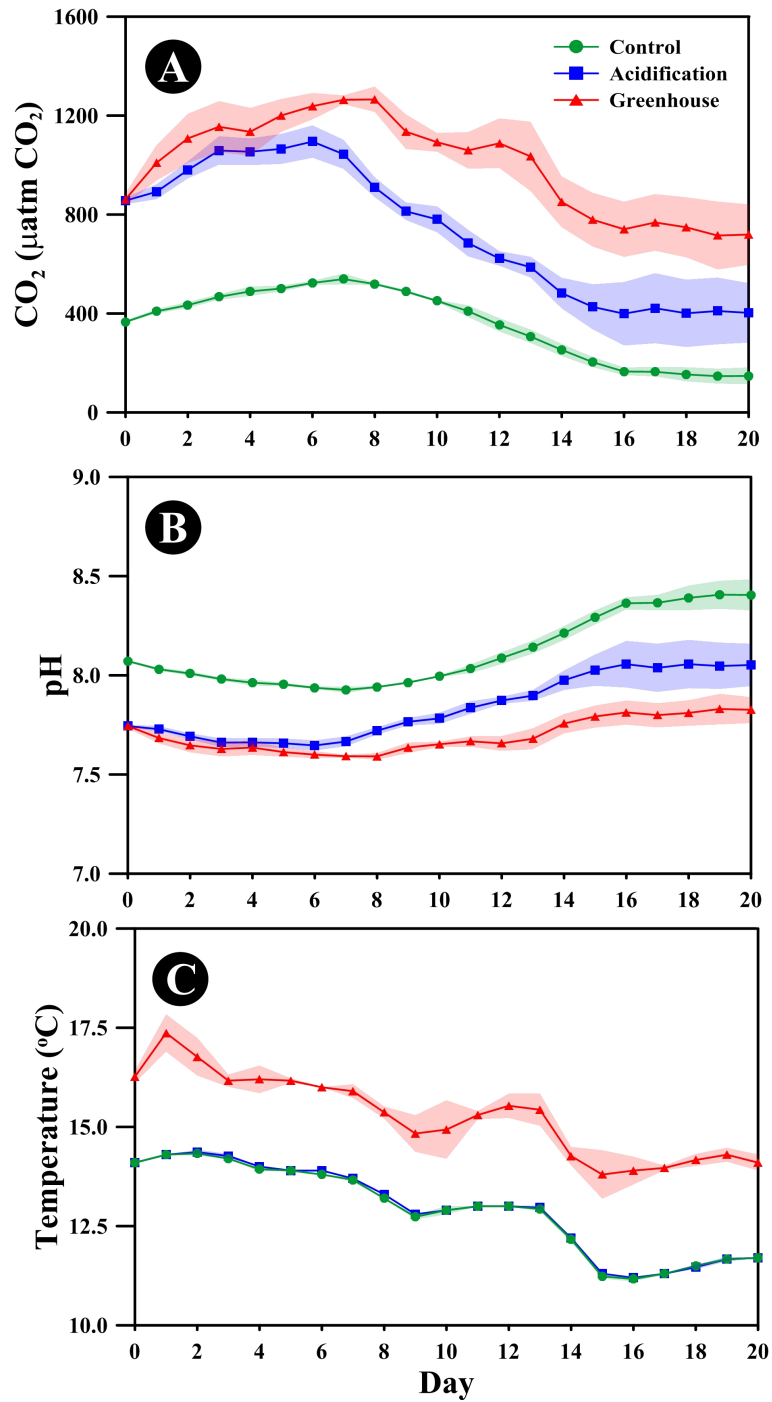


Fig. S1. Experimental conditions of seawater $p\text{CO}_2$ (A), pH (B) and temperature (C) during the experiment period under the present (green), acidification (blue), and greenhouse (red) conditions. Error bars represent the standard deviation from the mean of replicate enclosures ($n=3$) (source: Kim *et al.*, 2010).

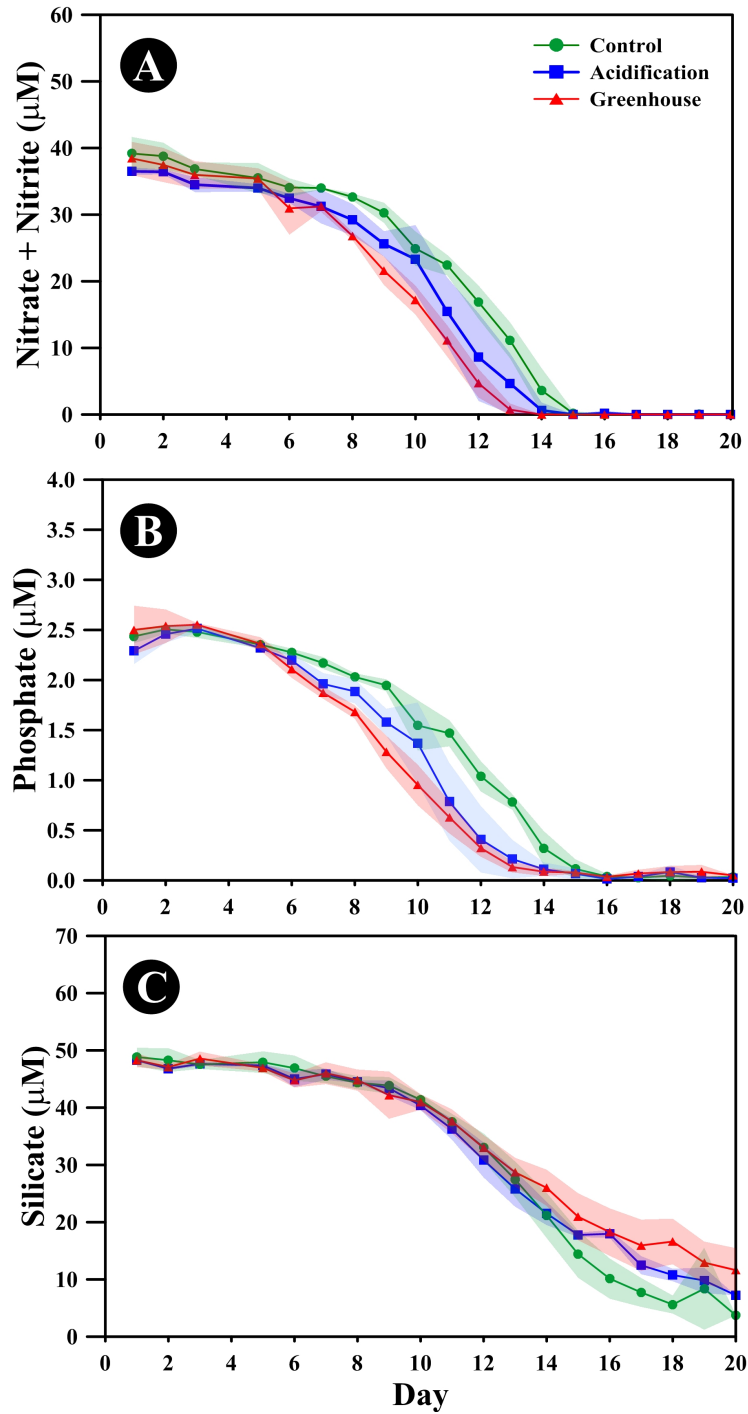


Fig. S2. Nutrients concentration (nitrate + nitrite, A; phosphate, B; and silicate, C) during the experiment period under the present (green), acidification (blue), and greenhouse (red) conditions. Error bars represent the standard deviation from the mean of replicate enclosures (n=3) (source: Kim *et al.*, 2011).

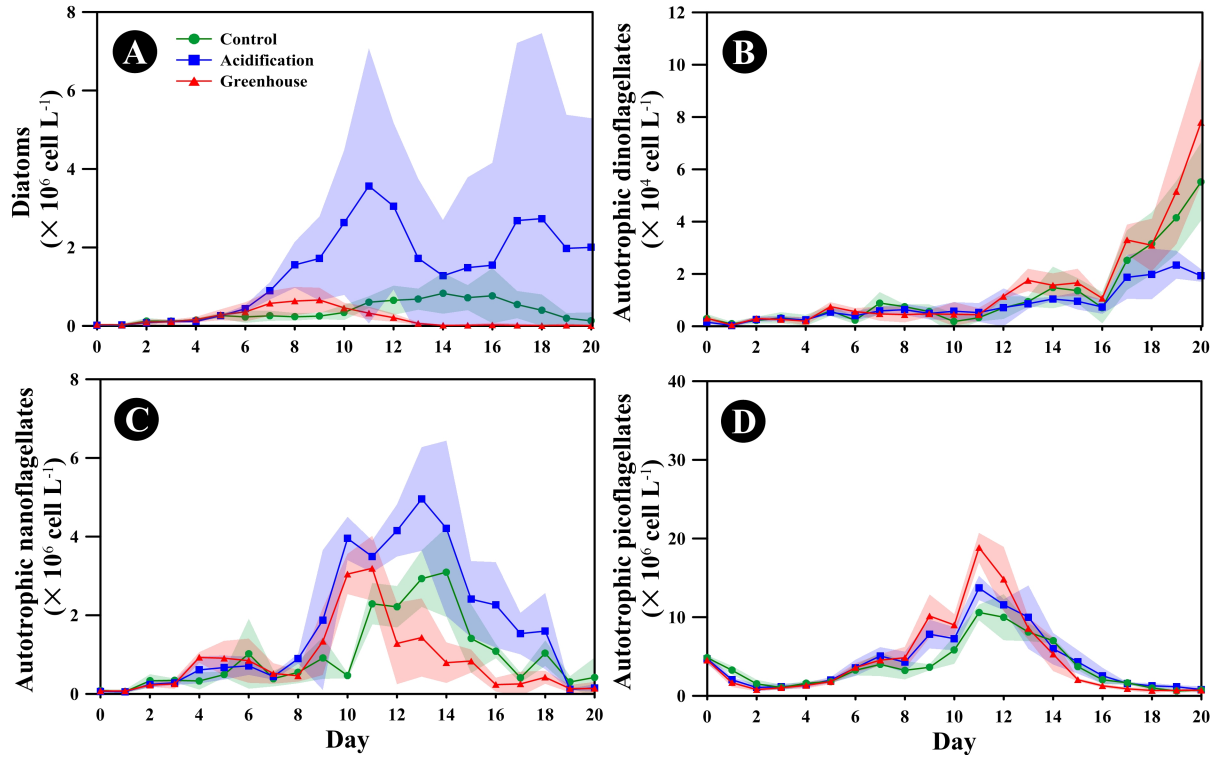


Fig. S3. The autotrophic phytoplankton taxonomic composition during the experiment period under the present (green), acidification (blue), and greenhouse (red) conditions. Error bars represent the standard deviation from the mean of replicate enclosures (n=3) (source: Kim *et al.*, 2010).

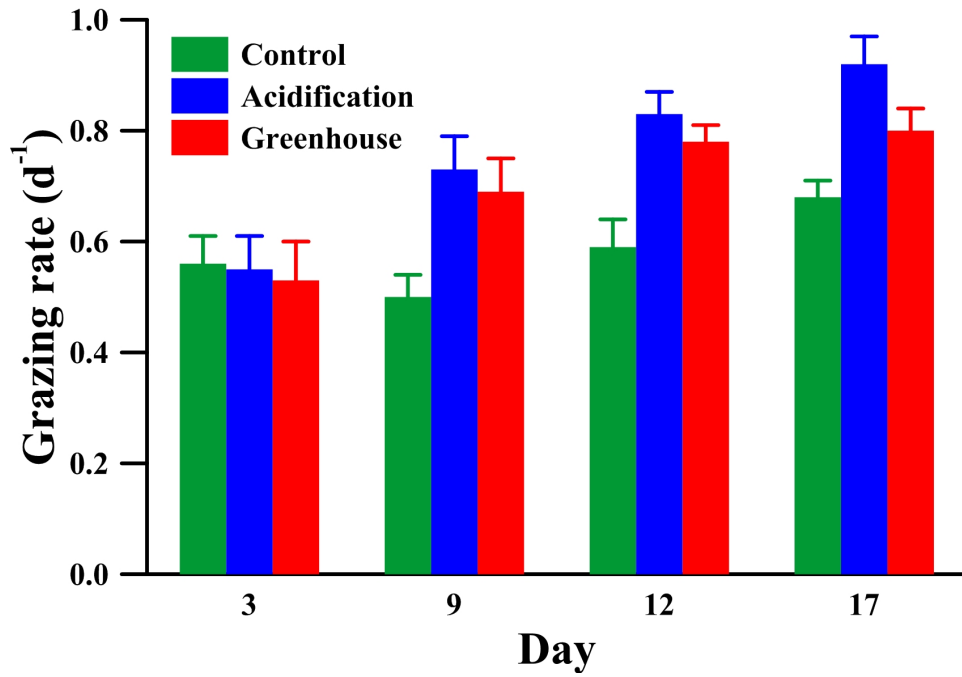


Fig. S4. The grazing rate during the experiment period under the present (green), acidification (blue), and greenhouse (red) conditions. Error bars represent the standard deviation from the mean of replicate enclosures (n=3) (source: Kim et al. 2010).

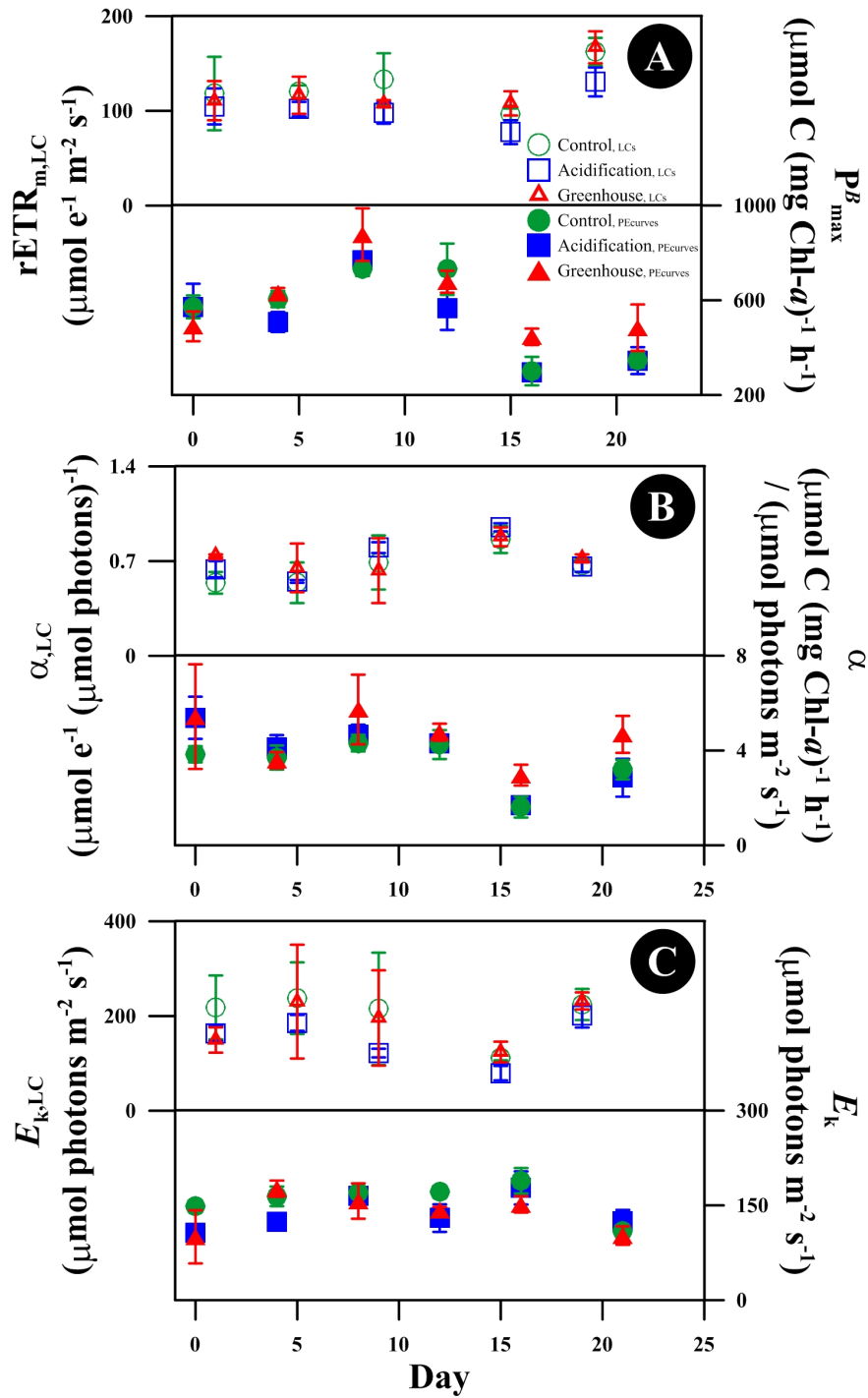


Fig. S5. Photosynthetic parameters from LCs (top and opened) and P-I curves (bottom and closed) of phytoplankton community during the experimental period in the present (green), acidification (blue), and greenhouse (red) conditions (data from Tables 1, 2). Error bars represent the standard deviation from the mean of replicate enclosures.

References

Kim, J.-M., Lee, K., Yang, E.J., Shin, K., Noh, J.H., Park, K.T., Hyun, B., Jeong, H.-J., Kim, J.-H., Kim, K.Y., Kim, M., Kim, H.-C., Jang, P.G., and Jang, M.C.: Enhanced production of oceanic dimethylsulfide resulting from CO₂-induced grazing activity in a high CO₂ world, *Environ. Sci. Technol.*, 44(21), 8140-8143, 2010.

Kim, J.-M., Lee, K., Shin, K., Yang, E.J., Engel, A., Karl, D.M., and Kim, H.-C.: Shift in biogenic carbon from particulate to dissolved forms under high carbon dioxide and warm ocean conditions, *Geophys. Res. Lett.*, 38, L08612, doi:10.1029/2011GL047346, 2011b.