

***Interactive comment on “Effects of anomalous high temperatures on carbon dioxide, methane, dissolved organic carbon and trace element concentrations in thaw lakes in Western Siberia in 2012” by O. S. Pokrovsky et al.***

**O. S. Pokrovsky et al.**

oleg@get.obs-mip.fr

Received and published: 1 July 2013

New Figure 1 B

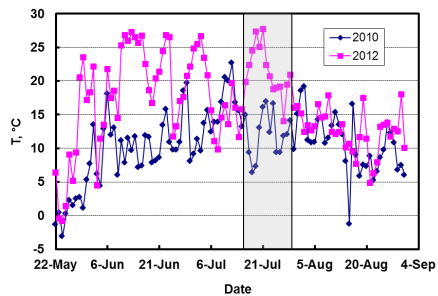
Interactive comment on Biogeosciences Discuss., 10, 7257, 2013.

Full Screen / Esc

Printer-friendly Version

Interactive Discussion

Discussion Paper



**Figure 1 B.** Mean daily temperatures of Tarko-Sale meteorostation (the closest to Khanymey study area). The period of 2010 can be considered as normal year for the region. The sampling period of 2010 and 2012 is shown by grey field.

Fig. 1.

Full Screen / Esc

Printer-friendly Version

Interactive Discussion

Discussion Paper

