

# **Nitrogen deposition: How important is it for global terrestrial carbon uptake?**

G. Bala<sup>1\*</sup>, N. Devaraju<sup>1</sup>, R. K. Chaturvedi<sup>2</sup>, K. Caldeira<sup>3</sup>, R. Nemani<sup>4</sup>

*<sup>1</sup>Divecha Center for Climate Change & Center for Atmospheric and Oceanic Sciences  
Indian Institute of Science, Bangalore -560012, India*

*<sup>2</sup>Center for Sustainable Technologies, Indian Institute of Science, Bangalore -560012, India*

*<sup>3</sup>Department of Global Ecology, Carnegie Institution, 260 Panama Street, Stanford, CA 94305,  
USA*

*<sup>4</sup>NASA Ames Research Center, Moffett Field, CA 94035, USA*

\*Corresponding Author: [gbala@caos.iisc.ernet.in](mailto:gbala@caos.iisc.ernet.in)

## **Abstract:**

Global carbon budget studies indicate that the terrestrial ecosystems have remained a large sink for carbon despite widespread deforestation activities. CO<sub>2</sub>- fertilization, N deposition and re-growth of mid-latitude forests are believed to be key drivers for land carbon uptake. In this study, we assess the importance of N deposition by performing idealized near-equilibrium simulations using the Community Land Model 4.0 (CLM4). In our equilibrium simulations, only 12-17% of the deposited Nitrogen is assimilated into the ecosystem and the corresponding carbon uptake can be inferred from a C:N ratio of 20:1. We calculate the sensitivity of the terrestrial biosphere for CO<sub>2</sub>-fertilization, climate warming and N deposition as changes in total ecosystem carbon for unit changes in global mean atmospheric CO<sub>2</sub> concentration, global mean temperature and Tera grams of Nitrogen deposition per year, respectively. Based on these sensitivities, it is estimated that about 242 PgC could have been taken up by land due to the CO<sub>2</sub> fertilization effect and an additional 175 PgC taken up as a result of the increased N deposition since the pre-industrial period. Because of climate warming, terrestrial ecosystem could have lost about 152 PgC during the same period. Therefore, since preindustrial times terrestrial carbon losses due to warming may have been approximately compensated by effects of increased N deposition, whereas the effect of CO<sub>2</sub>-fertilization is approximately indicative of the current increase in terrestrial carbon stock. Our simulations also suggest that the sensitivity of carbon storage to increased N deposition decreases beyond current levels, indicating climate warming effects on carbon storage may overwhelm N deposition effects in the future.

## **1. Introduction**

Though nitrogen is the most abundant element in the atmosphere, most organisms including plants and animals cannot use it in its most common form (N<sub>2</sub>). It can be used only in reactive forms of NO<sub>y</sub> and NH<sub>x</sub>, which when deposited on the surface through various processes is generally referred to as the “nitrogen deposition”. Since the pre-historic time, nitrogen has been converted to bioavailable forms through ‘lightening’, bacteria, algae, legumes and plants with associative N<sub>2</sub> fixers. The rate of nitrogen fixation (and thus deposition) has significantly increased due to systematic cultivation of rice and leguminous plants. The rate is estimated to be ~10.8 TgN/yr (Tera grams of Nitrogen per year) around 1765 (*Galloway et al.*, 2004; *Jain et al.*,

2009) and around 17.4 TgN/yr by 1865 (*Galloway et al.*, 2004).

In the industrial era, nitrogen deposition has increased many times due to nitrogenous emissions from fossil fuel combustion and due to industrial production of various reactive nitrogen compounds from Haber-Bosch process. As a result, N deposition increased to about 60 TgN/yr in the 1990s (*Galloway et al.*, 2004; *Jain et al.*, 2009) and is projected to increase to about 125 TgN/yr by 2050 (*Galloway et al.*, 2004). Estimates of N deposition based on NO<sub>y</sub> emissions alone are between 25 and 40 TgN/yr for the year 2000 and 60-100 TgN/yr by 2100 (*Lamarque et al.*, 2005).

Global carbon budget studies suggest that the global terrestrial ecosystem remains a large sink of carbon in recent decades despite a widespread deforestation related flux of carbon to the atmosphere (*Friedlingstein et al.*, 2010; *Le Quere et al.*, 2009; *Pan et al.*, 2011; *Schimel*, 1995). Regrowth of mid-latitude forests, CO<sub>2</sub>-fertilization and nitrogen deposition are believed to be key drivers for land carbon uptake (*Canadell et al.*, 2007; *Friedlingstein et al.*, 2010; *IPCC*, 2007). There have been many observational studies on CO<sub>2</sub> fertilization which yield a range of results (*Korner*, 2006). For example, free-air CO<sub>2</sub> enrichment experiments in forest stands (*Norby et al.*, 2005) indicate a 23% median increase in net primary production (NPP) in response to a CO<sub>2</sub> concentration increase from 376 to 550ppm (parts per million) but some studies (*Newingham et al.*, 2013) show no significant effect. It appears that the effect strongly depends on the availability of nutrients and soil water, the plant species and state (young vs. mature) of the ecosystems (*Korner*, 2006). Warming in contrast is known to diminish the land carbon sink by enhancing respiration (*Cox et al.*, 2000; *Cramer et al.*, 2001; *Friedlingstein et al.*, 2001; *Govindasamy et al.*, 2005; *Joos et al.*, 1991; *Lloyd and Taylor*, 1994; *Matthews et al.*, 2005; *Thompson et al.*, 2004; *Zeng et al.*, 2004). Global mean temperature is estimated to have increased by about 0.74°C in the period 1906 to 2005 (*IPCC*, 2007).

A number of observational studies from different geographical areas have shown that N deposition increases carbon stocks in different plant species (see Table S1 for a brief list of studies and their results). While the amount of additional carbon stock increase depends on the plant functional type, location, type of ecosystem (N limited or not) and other environmental conditions, the upper bound can be estimated from the C:N ratio of the ecosystems: an estimate of upper bound for present day would be 1-2 PgC per year for a C:N ratio of 20-40:1 and 50 TgN/yr increase in N deposition relative to pre-industrial period. Beyond certain N deposition

levels additional N deposition has reduced impact on biomass yield and productivity (*Lemus et al.*, 2008; *Rasmussen*, 1998). While modeling studies show that N deposition increases NPP and carbon stocks (*Jain et al.*, 2009; *Magnani et al.*, 2007; *Thornton et al.*, 2009; *Yang et al.*, 2009), the importance of N deposition relative to CO<sub>2</sub> fertilization effect and temperature increases has not been adequately explored on a global scale. A recent coupled modeling study shows N deposition and elevated CO<sub>2</sub> could have synergistic effect which could explain 47% of terrestrial carbon uptake in the 1990s (*Churkina et al.*, 2009). Estimates of global terrestrial carbon uptake due to current N deposition range from 0.15-0.35 PgC/yr (10-20 % of terrestrial uptake) (*de Vries*, 2009; *de Vries et al.*, 2008; *Zaehle and Dalmonch*, 2011) to 1.0-2.0 PgC/yr (100 % of terrestrial uptake) (*de Vries*, 2009; *de Vries et al.*, 2008; *Holland et al.*, 1997; *Magnani et al.*, 2007; *Zaehle and Dalmonch*, 2011) or 0.31 PgC/yr in tree carbon storage (*Thomas et al.*, 2010). However, there are indications that N-induced increase in land carbon uptake is unlikely to keep pace with future CO<sub>2</sub> increases (*Reay et al.*, 2008).

Terrestrial carbon accumulation could be constrained by the availability of nitrogen (*Hungate et al.*, 2003; *Nadelhoffer et al.*, 1999) and because of this constraint it has been found (*Bonan and Levis*, 2010; *Jain et al.*, 2009; *Thornton et al.*, 2009; *Yang et al.*, 2009) that nitrogen cycle dynamics attenuates the magnitude of global terrestrial carbon sinks and sources driven by CO<sub>2</sub> fertilization and changes in climate. However, it is not clear how the sensitivity of terrestrial carbon uptake to N deposition will change under climate warming and changing atmospheric CO<sub>2</sub> concentration. In this study, we address the following three questions:

- 1) How much carbon could be sequestered into terrestrial ecosystem per TgN/yr increase in N deposition?
- 2) How does the sensitivity to N deposition respond to the changing temperature and CO<sub>2</sub> concentration?
- 3) What is the importance of N deposition relative to CO<sub>2</sub>-fertilization and global warming in determining total ecosystem carbon storage? (Total ecosystem carbon (TEC) is the sum of all terrestrial carbon pools in vegetation, soil and litter.)

To address these issues, we use a global land model coupled to carbon and nitrogen cycles. Our simulations are highly idealized since our main goal here is to get an order of magnitude estimate for the sensitivity of terrestrial ecosystem to N deposition, climate warming and CO<sub>2</sub>-fertilization. Further, we design near-equilibrium simulations as opposed to transient

simulations since there could be substantial lags in terrestrial ecosystem response (*Jones et al.*, 2009) and equilibrium simulations allow us to capture long term consequences. However, it should be cautioned that the sensitivity parameters estimated from equilibrium simulations have much larger magnitudes when compared in transient simulations as shown in one of our recent studies (*Bala et al.*, 2012). Though our simulations are highly idealized the results may have important implications for the terrestrial carbon dynamics for the historical and future periods.

## 2. Model description

To investigate the relative influence of N deposition, CO<sub>2</sub> fertilization and climate warming on ecosystem carbon productivity, we use the Community Land Model CLM4 (*Lawrence et al.*, 2011). CLM4 merges the biophysical framework of the CLM 3.5 (*Oleson et al.*, 2010; *Oleson et al.*, 2008; *Stockli et al.*, 2008) with the terrestrial biogeochemistry model Biome BGC (version 4.1.2) (*Thornton and Rosenbloom*, 2005; *Thornton et al.*, 2002). CLM4 includes revised hydrology and snow models, organic soils, and a 50m deep ground column when compared to CLM3.5. Additionally in CLM4 the distribution of plant functional types (PFTs) is modified to reduce a high grass bias in forested regions. It includes carbon-nitrogen biogeochemistry with prognostic carbon and nitrogen in vegetation, litter, and soil organic matter (*Thornton and Zimmermann*, 2007; *Thornton et al.*, 2009). A prognostic fire model simulates wild fires (*Kloster et al.*, 2010). In CLM4, Nitrogen input to the ecosystem is biological fixation and N deposition. Within the ecosystem, Nitrogen is released from organic matter (gross mineralization) in forms that can then be taken up by plants (plant uptake or assimilation) and remaining is immobilized (Immobilization). N losses from ecosystem are through fire loss, denitrification and leaching.

The offline simulations of CLM4 need atmospheric forcing (or climate) data which is also provided along with the source code distribution of CLM4. The forcing data is a 57year (1948–2004) observationally constrained atmospheric dataset at a three-hourly intervals for surface air temperature, precipitation, surface pressure, boundary layer wind and surface solar radiation at a horizontal resolution of 1.9° latitude and 2.5° longitude (*Qian et al.*, 2006). Inputs to the model such as, the initial conditions, the surface parameters and the plant functional type physiological constants were all set from the input dataset associated with distribution of CLM4 source code. The 15 PFTs that are prescribed in the model corresponds to present-day vegetation

cover and land cover and land use change is not considered. Prescribed constant level of atmospheric CO<sub>2</sub> concentration forcing is used for each simulation.

### 3. Experiments

CLM4 simulations in this study are started from a well spun up state (restart files supplied along with source code by NCAR) corresponding to pre-industrial levels of atmospheric CO<sub>2</sub> concentration (285 ppm) and N deposition (20.3TgN/yr). When we continue this case for 1000 years (the control experiment 1N as discussed below) the drift in global total ecosystem carbon is only 0.015 PgC per year, suggesting that the control simulation is in near-equilibrium state. From this well spun-up preindustrial state provided by NCAR, we initiate twelve 1000-year simulations with the same climate forcing but varying N- deposition, CO<sub>2</sub> concentrations and climate warming over the globe to isolate the effects of these factors on global ecosystem productivity and carbon storage. The twelve experiments are grouped into 3 sets as follows: (1-4) 1N (Control), 2N, 4N and 8N where atmospheric CO<sub>2</sub> concentration is fixed at the pre-industrial (285ppm; year 1850) levels and N deposition is 1x, 2x, 4xand 8x the pre-industrial levels, respectively, (5-8) 1N2xCO<sub>2</sub>, 2N2xCO<sub>2</sub>, 4N2xCO<sub>2</sub> and 8N2xCO<sub>2</sub> are same as (1-4) but the CO<sub>2</sub> level is doubled, (9-12) 1N2K, 2N2K, 4N2K and 8N2K are same as (1-4) but a uniform increase of 2K in atmospheric temperature forcing is imposed.

In the above simulations, changes in N deposition, CO<sub>2</sub> and climate warming are imposed as step-function changes at the start of the simulations. It should be noted that we refer to 1N as pre-industrial control though we use vegetation types corresponding to present day and use a 57-year forcing dataset that corresponds to 1948-2005. During the last 100-year period, net ecosystem exchange (NEE) has a magnitude between 0.01 and 0.1 PgC/yr in all the simulations and hence the simulations are considered to be in near-steady state. The 57-year atmospheric forcing dataset is repeatedly used in all twelve 1000-yr experiments. The influence of the 57-year cycle or short term trend in our simulations is removed by either applying a 57-year running average or by showing differences between the experiments (subtraction one experiment from another removes the 57-year trends cycles) in our analysis.

The prescription of nitrogen deposition in our simulations is designed so as to capture the pre-industrial, current and projected future nitrogen deposition levels on the global land system: N deposition in 1N (preindustrial period) and 2N are prescribed at 20.3 TgN/yr (*Bonan and*

Levis, 2010) and 40.6 TgN/yr, respectively, over land whereas the present day N deposition is 65.2 TgN/yr in CLM4 dataset. The N deposition used in CLM4 (Fig. 1) were generated by the three-dimensional chemistry transport MOZART-2 (Model for Ozone and Related Tracers, version 2 (Horowitz *et al.*, 2003). These N deposition levels are close to the values reported in literature i.e 17.4 TgN/yr in 1860 and 62 TgN/yr in the year 2000 (Galloway *et al.*, 2004; Jain *et al.*, 2009). The prescribed N deposition over land in the experiment 8N is 162.4 TgN/yr while the projected N deposition in 2050 is 135 TgN/yr (Galloway *et al.*, 2004).

While the first set of experiments (1-4) is designed to estimate the response of the model to N deposition, the second set of experiments (5 to 8) is designed to estimate the sensitivity of the model to CO<sub>2</sub>-fertilization and the interaction between CO<sub>2</sub>-fertilization with N deposition. The third set of experiments (9 to 12) is designed to calculate the sensitivity to climate warming and its interaction with N deposition.

#### **4. Results and Discussion**

The spatial pattern of N deposition used in our experiments based on pre-industrial N deposition is similar to present day deposition with a correlation coefficient of 0.87 for deposition over land (Fig. 1). South and Southeast Asia, Europe, Eastern North America and Central Africa have larger N deposition. The pattern of deposition is primarily determined by sources of reactive nitrogen inputs to the atmosphere, atmospheric transport and wet and dry deposition processes in the atmosphere (Horowitz *et al.*, 2003).

The changes in key terrestrial carbon cycle variables (Net Primary Productivity (NPP), vegetation carbon, soil carbon and total ecosystem carbon) for elevated N deposition are shown in Fig.2 which shows that the simulations have reached near-equilibrium conditions after 900 years and hence we use the last 100 years in our analysis. During the last 100-year period, net ecosystem exchange (NEE) has a magnitude between 0.01 and 0.1 PgC/yr in all the simulations. Figure 2 suggests that as the N deposition increases, NPP, vegetation carbon, soil carbon and TEC also increase. It demonstrates that the model adequately represents the N limitation in the terrestrial ecosystems (Vitousek and Howarth, 1991) as addition of N deposition results in increase in simulated NPP. It also suggests that at lower N deposition levels the terrestrial ecosystem is more sensitive to addition of nitrogen and is less sensitive at higher N deposition levels. Further, we find that climate warming leads to a decrease in TEC and the decrease is

larger when N deposition levels are larger. The causes for the dependence of sensitivity on N deposition levels are discussed in the following paragraphs.

Fig. 3 and Table 1 show that the simulated TEC averaged over the near-equilibrium period (900-1000 years) increases substantially as N deposition rate is increased. The increases are 69 PgC (3.6%), 183.5 PgC (9.4%), and 352 PgC (18.1%) for doubling, quadrupling and eight times N deposition, respectively. TEC increases per TgN/yr are 3.41, 3.01, and 2.48 PgC/(TgN/yr) for these three cases, respectively. That is, TEC increase per unit N deposition becomes smaller for large N deposition, and eventually the system would reach steady state and thus the land biosphere will eventually stop being a carbon sink (*Rasmussen, 1998*). The sensitivity for N deposition decreases at higher N deposition levels in real world because other factors such as water or availability of other nutrients especially phosphorous would eventually limit ecosystem productivity. These limitations are represented in the model by parameterizing biological nitrogen fixation (BNF; an input of N to terrestrial ecosystem) as a function of NPP (*Oleson et al., 2010*):

$$\text{BNF} = 1.8(1 - \exp[-0.003\text{NPP}])$$

This formulation captures the observed broad-scale dependency of BNF on ecosystem productivity (*Oleson et al., 2010*).

An exponential fit with 2 time constants shows that major changes in TEC occur on decadal and centennial time scales for step function changes in N deposition, temperature and CO<sub>2</sub> (Table S2). Therefore, on centennial time scales, the order of magnitude TEC increase for N deposition can be inferred from accumulation of total ecosystem nitrogen (TEN; Table 1) due to N deposition. Carbon and nitrogen flow in parallel between vegetation, litter and soil organic matter respecting the stoichiometry of the various organic matter pools. In CLM4, the C:N ratio for leaf, wood, root and soil pools are 30:1, 130:1, 55:1 and 10:1, respectively. When carbon stocks are weighted with the fraction of carbon and nitrogen in these pools in the 1N case, we find an average C:N ratio of about 20:1 which is consistent with the approximate ratio of TEC to TEN in Table 1. Therefore, when N deposition is increased by 20.3 TgN/yr (2N-1N), we find an increase in TEN of 3.4 PgN and an associated TEC increase of 69 PgC.

Our model-based estimate is conservative when compared to observations in European sites which find a carbon sequestration range of 5-75 KgC/KgN for forests and heartlands and a most common range of 20-40 kg C/kg N (*de Vries et al., 2009*) or US sites which find above-



ground biomass increment of 61 kg of carbon per kg of nitrogen deposited (*Thomas et al.*, 2010). Our model calculations presented here are for the global mean case, that is average from all 15 pfts, but the measurement results cited are only for the forest pfts. Therefore, it is not surprising that the N deposition effect for the forests is higher than modeled global mean case, because forests have large C-storage capacity. Defining an overall N-accumulation fraction as the ratio of ecosystem N-accumulation to N deposition for the entire period (1000 yrs), we get an N-accumulation fraction in the range of 12-17% (12% for 8N-1N and 17 % for 2N-1N) and the remaining N is lost to atmosphere through denitrification, fire loss and leaching (Fig.5). Therefore, for our equilibrium simulations only 12-17% of the deposited Nitrogen is assimilated into the ecosystem and the corresponding carbon uptake can be inferred from a C:N ratio of 20:1.

Fig. 3 also shows that under the warming scenario, the simulated TEC averaged over the year's 900-1000 declines for all N deposition levels. Under the warming scenario, the simulated TEC declines for all N deposition levels except 8N2K. This suggests that the magnitude of the effect of 2K warming is the same as 8N. Thus, in this model, the TEC decline due to the 2K warming overwhelms the TEC increase associated with N deposition until N deposition reaches 8 times preindustrial levels. Warming is expected to cause increased decomposition, increased nitrogen mineralization, and hence increased primary production - thereby offsetting some of the increased carbon release from soils that could otherwise provide a positive feedback to global warming. The model does simulate larger soil mineral nitrogen per unit soil carbon for 2K warming (Fig. S1). However, we find that the total amount of mineral nitrogen declines in the warming cases (Fig. S1) because the amount of soil carbon is smaller due to decline in ecosystem productivity (Fig. 2) in the 2K warming cases. This is consistent with declines in TEC in these cases (Fig. 3)

The TEC decreases for a 2K warming by 303.4 (15.6%), 315.8 (15.7%), 335.5 (15.8%) and 365.1 (15.9%) PgC, respectively, at preindustrial level N deposition (1N2K –1N), 2 times (2N2K-2N), 4 times (4N2K-4N) and 8 times (8N2K-8N) the preindustrial N deposition levels. While the absolute magnitudes of these changes show an increase with the background N deposition levels, the similar percentage changes suggest that the sensitivity of TEC to warming remains almost a constant for the levels of N deposition considered in this study. This indicates a “pool size” effect: at higher N deposition levels, the carbon stocks are higher and hence the change per unit warming is larger though the percentage change is constant.

The CO<sub>2</sub>-fertilization leads to an increase in TEC at all levels of N deposition (Fig.3). The simulated TEC averaged over the years 900-1000 increases for a doubling of CO<sub>2</sub> by 627.7 (32.3%), 649.5 (32.2%), 689.9 (32.4%) and 758.4 (33%) PgC respectively, at preindustrial level N deposition (1N<sub>2</sub>xCO<sub>2</sub> –1N), 2 times (2N<sub>2</sub>xCO<sub>2</sub>-2N), 4 times (4N<sub>2</sub>xCO<sub>2</sub>-4N) and 8 times (8N<sub>2</sub>xCO<sub>2</sub>-8N) the preindustrial N deposition levels. The percentage changes suggest that the sensitivity of TEC to CO<sub>2</sub> fertilization also remains almost a constant for the levels of N deposition considered in this study. However, the absolute magnitudes show an increase with the background N deposition levels as was the case with warming, indicating the “pool size” effect identified above.

Spatial pattern of changes in TEC under different N deposition levels and under warming and CO<sub>2</sub> fertilization levels for the last 100 years of simulations are shown in Fig.4. Overall, N deposition leads to enhanced TEC (Fig. 4) as increased N deposition leads to increase in BNF and N- fixation (Fig.5). Most of the increase in TEC is located in regions where tree are the dominant plant functional types (*Lawrence et al.*, 2011). We also find that climate warming leads to a decline in TEC except in northern high latitudes (Fig. 4) where warming results in increased growing season and increased TEC. CO<sub>2</sub>-fertilization causes an increase in TEC everywhere with centers of maxima seen in the Amazon, central Africa and Southeast Asia (Fig. 4). Climate warming and CO<sub>2</sub>-fertilization lead to decrease and increase, respectively, in total ecosystem nitrogen which are primarily driven by changes in denitrification, BNF and fire loss nitrogen (Fig. 6).

The feedbacks of terrestrial biosphere to increasing CO<sub>2</sub> concentration and warming have been well quantified (*Bala et al.*, 2012; *Boer and Arora*, 2009; *Friedlingstein et al.*, 2003; *Friedlingstein et al.*, 2006; *Zickfeld et al.*, 2011) using two parameters that determine the land carbon uptake: the carbon storage sensitivity over land to CO<sub>2</sub> ( $\beta_L$ ; beta) and to temperature change ( $\gamma_L$ ; gamma). In this study we introduce a new sensitivity parameter i.e. carbon storage sensitivity over land to N deposition ( $\delta_L$ ; delta) to quantify the response for N deposition.  $\beta_L$  is defined (*Bala et al.*, 2012; *Friedlingstein et al.*, 2003; *Friedlingstein et al.*, 2006) as the change in TEC associated with unit change in atmospheric CO<sub>2</sub> ( $C_a$ ),  $\gamma_L$  as the change in TEC associated with unit change in temperature and  $\delta_L$  as the change in TEC associated with unit change in atmospheric N deposition:

$$\beta_L = \frac{\Delta TEC}{\Delta C_a} \quad (1)$$

$$\gamma_L = \frac{\Delta TEC}{\Delta T} \quad (2)$$

$$\delta_L = \frac{\Delta TEC}{\Delta N} \quad (3)$$

$C_a$ ,  $T$  and  $N$  refer to atmospheric  $CO_2$  concentrations, global-mean surface temperature and atmospheric N deposition to soil mineral Nitrogen.

Table 2 shows the values of  $\beta_L$ ,  $\gamma_L$  and  $\delta_L$  and the time evolution of these parameters are shown in Fig. 7. We find that  $CO_2$  fertilization ( $\beta_L$ ) and N deposition ( $\delta_L$ ) lead to increases in TEC. TEC increases  $\sim 2.21$  PgC/ppm (computed from 1N2x $CO_2$  and 1N) in response to increased atmospheric  $CO_2$  concentration, and by  $\sim 3.41$  PgC/(TgN/yr) (computed from 2N and 1N) in response to increased N deposition. However warming causes TEC to decrease by  $\sim 152$  PgC/K (computed from 1N2K and 1N). Table 2 also suggests that with the increasing terrestrial N deposition, the magnitude of TEC sensitivity to  $CO_2$  fertilization increases as does the negative TEC sensitivity to warming due to the “pool size” effect discussed earlier. Further, we find that TEC sensitivity to N deposition decreases with increasing N deposition levels and it increases (decreases) in the presence of  $CO_2$ -fertilization (climate warming). The equilibrium values of  $\beta_L$  and  $\gamma_L$  in our simulations also are larger (Bala *et al.*, 2012) when compared with previous transient CCSM simulations and stand-alone-land model simulations (Bonan and Levis, 2010; Thornton *et al.*, 2009). For a doubling of  $CO_2$ , the TEC increases by 32.3% after 900 years of stabilization which is close to the 28% increase found by a recent study (Bala *et al.*, 2012) for a doubling  $CO_2$  in a coupled climate model.

Our value of  $\delta_L$  is consistent with a previous study (Nadelhoffer *et al.*, 1999) which suggests a carbon sequestration of 0.25 PgC/yr from increase in N deposition: our value of 3.41 PgC/(TgN/yr) over 1000 years translates to 0.17 PgC/yr for an increase in N deposition of about 50 TgN/yr since the pre-industrial period.

Fig.8 shows that  $\beta_L$  is positive at all land points and  $\beta_L$  shows a slight increase as N deposition levels increase (Table 2).  $\gamma_L$  decreases in most regions (Fig. 8) because climate warming results in reduced NPP and the consequent declines in vegetation and soil carbon.

However, in the northern high latitudes warming leads to higher ecosystem productivity and hence positive  $\gamma_L$  values. At higher levels of N deposition concentrations, unit increase in temperature results in larger ecosystem carbon losses (Table 2). At lower levels of N deposition concentration, an increase in N deposition results in larger ecosystem carbon increase -tropical and temperature regions show relatively large increases in TEC as N deposition increases from 1N to 2N (Fig.8). However at higher levels of N deposition, increases are moderate. Also TEC sensitivity to N deposition decreases for present day deposition when compared to pre-industrial N deposition levels (Fig.S2). This shows that the magnitude of TEC sensitivity to N deposition is likely to decrease beyond current N deposition levels.

We perform an additional simulation (1NPREC2K) to investigate effects of hydrological cycle changes, because in our climate warming simulations we have imposed only temperature changes but not the associated changes in other important variables such as precipitation, water vapor and clouds. In 1NPREC2K, we imposed a uniform increase in precipitation of 6% and specific humidity increase of 13% in association with the 2 K warming as global mean precipitation and specific humidity are constrained to increase by  $\sim 3\%$  and  $6.5\%$  per unit warming, respectively (*Allen and Ingram, 2002; Held and Soden, 2006*). A comparison of spatial pattern of changes in TEC in 1NPREC2K and 1N2K indicates that the experiment 1N2K without the climate change related precipitation and water vapor changes is able to simulate the TEC changes associated with a 2K global mean warming very well (Fig. S3) as regional differences in TEC between 1NPREC2K and 1N2K are at most only  $\sim 10\text{-}15\%$ . Further, increased N deposition could potentially affect the hydrological cycle by increasing the leaf area index and canopy transpiration. However, we find that the simulated effect of N deposition on land hydrological cycle is much smaller when compared to effects from  $\text{CO}_2$ -fertilization and climate warming (Fig. S4).

Finally, we assess if there is any nonlinearity (or two-way interaction) in our simulations (Table S3). We find that the combined effect for warming and N deposition is approximately close to the sum of individual effects at smaller N deposition levels indicating the near-absence of two-way interactions. However, larger deviations from linearity appear at larger N deposition. For instance, at eight times the pre-industrial N deposition levels the difference between combined effect and sum of effects is about 62 PgC which is about 10% of the sum of the magnitudes of the individual effects. The interaction between climate change and N deposition

imply a loss of TEC and the sign of net TEC change is altered by the interaction (Table S3). Similar near-linearity at small N deposition and significant nonlinearity at higher N deposition can be seen for the combination of CO<sub>2</sub>-fertilization and N deposition effects (Table S3). In this case, the interaction implies a gain of TEC for ecosystems and again the nonlinearity is about 10%. The negative sign of the two-way interaction for climate change and positive sign for CO<sub>2</sub>-fertilization are merely a reflection of the fact that the TEC sensitivity to N deposition ( $\delta_L$ ) is larger under CO<sub>2</sub>-fertilization and smaller under climate change (Table 2). These nonlinear interactions would suggest that the role of N deposition will vary in the future depending on climate change and the CO<sub>2</sub> levels. For instance, the interaction term may be more important under a higher emission scenario such as RCP8.5 (Representative Concentration Pathway 8.5) than under RCP2.6.

## 5. Conclusions

What are the key drivers of the terrestrial carbon uptake in the recent decades? While the role of carbon fertilization and climate warming is well studied, the role of nitrogen deposition remains under explored. N deposition has increased from 10.8 TgN in 1765 to 62.2 TgN in 2000 (*Galloway et al.*, 2004; *Jain et al.*, 2009). During the same period, the atmospheric CO<sub>2</sub> has increased by about 110 ppm and the global mean temperature has increased by about 1 K (*IPCC*, 2007). Our analysis of the TEC sensitivity to CO<sub>2</sub> fertilization ( $\beta_L$ ) and N deposition ( $\delta_L$ ) suggests that about 242 PgC (110 ppm x 2.2PgC/ppm) could have been taken up by land due to the CO<sub>2</sub> fertilization effect and an additional 175 PgC ( $51.4\text{TgNyr}^{-1} \times 3.4\text{PgC}/(\text{TgNyr}^{-1})$ ) taken up as a result of the increased N deposition since the pre-industrial period. Because of climate warming ( $\gamma_L$ ), terrestrial ecosystem could have lost about 152 PgC during the same period, assuming a warming of about 1K. The zonal mean percentage changes in TEC due to these three factors show similar orders of magnitude (Fig. 9, right panels). We caution that our estimates provide only an order of magnitude of the three effects considered in this study since our simulations are idealized near-equilibrium simulations. We are justified in using near-equilibrium sensitivity values for the transient historical period since major TEC changes occur on decadal and centennial time scales (Table S2).

These estimates indicate that TEC losses due to increased warming are likely more than compensated by the additional N deposition since the pre-industrial period (Fig. 9). The land

biosphere has been a sink for carbon because N deposition and warming impacts approximately cancel each other while CO<sub>2</sub>-fertilization effect is feeding the current increase in ecosystem productivity. While the contribution of CO<sub>2</sub>-fertilization and warming to TEC are well known, our study suggests N deposition to be an equally important factor controlling the terrestrial carbon cycle. There have been indeed suggestions that terrestrial carbon loss due to deforestation and agriculture may have been more or less balanced by nitrogen-stimulated carbon uptake (*Schindler and Bayley, 1993*). The N deposition is projected to increase by about 8 times by 2050s relative to preindustrial levels (*Galloway et al., 2004*). Our analysis suggests that as N deposition increases the sensitivity of TEC to N deposition decreases (Fig.7) due to two factors. First, for a constant N-deposition rate the annual increase in TEC decreases with time (see the exponential fit for TEC changes in Table S2). Second, for a specified amount of increase in N deposition the increase in TEC decreases with the amount of pre-existing N deposition. Both of these factors would lead to a decrease in the magnitude of TEC increase over time. Therefore, it is likely that increasing N deposition may not be able to compensate the loss in TEC caused by warming in the future.

Our findings should be viewed in the light of the limitations and uncertainties involved in this study. One of the key limitations is that we have used an offline version of CLM4 and hence the feedbacks with other components of the climate system (e.g. atmosphere and ocean) are missing in our simulations. However, our results should not differ substantively from those obtained with more comprehensive models, and use of a simpler model permits isolation of effects of different causal factors (i.e., CO<sub>2</sub> level, temperature, and amount of N deposition). For instance, our present analysis suggests that TEC could increase by 628 PgC (32.3%) for a doubling of CO<sub>2</sub> which is in close agreement with a recent study (*Bala et al., 2012*) which found 28% increase for doubled CO<sub>2</sub> in a coupled model that had CLM4 as its land model component.

In our climate change experiments, we have not considered land use and land cover change. The radiative effect of N<sub>2</sub>O emissions associated with N deposition is also not included in this study. There are indications that the C-sink benefit offered N deposition could be significantly offset by the warming potential of associated N<sub>2</sub>O emissions (*Dolman et al., 2010; Reay et al., 2008; Xu et al., 2012*). Recent studies (*Tian et al., 2012*) do indicate that the warming effect associated with N<sub>2</sub>O emissions in “over fertilized” regions has completely counteracted the carbon sink effect in some regions of the world. Our model has neither the representation for

Ozone (produced by elevated NO<sub>x</sub>) damage to plants (*Krupa et al.*, 2001) nor the NPP and ecosystem carbon decline due to soil acidification from sustained Nitrogen deposition (*Rasmussen*, 1998).

Since the main focus of the paper is on global scale, we have not studied the pft wise carbon sequestration in detail here. We have not also performed regional analysis of carbon uptake due to N deposition. Further, we have quantified the main individual effects and interaction of N deposition effect with climate warming and CO<sub>2</sub> fertilization (Table S3) without the use of factorial analysis of variance (ANOVA) in the present study. A comprehensive investigation of all possible interactions among N deposition effect, climate warming and CO<sub>2</sub> fertilization using ANOVA is beyond the scope of this paper. We intend to use ANOVA for making a detailed quantification of interactions among multiple factors including land cover change in our future investigations.

Our study is an idealized modeling study which investigates the near- equilibrium changes and does not quantify the changes from transient forcing. Therefore, it is likely that the magnitudes of the sensitivity parameters estimated in this study are larger than would be obtained in transient simulations (*Bala et al.*, 2012). This study is based on a single model CLM4 which is one of a few models with representations for both carbon and nitrogen cycles. Our understanding of nitrogen cycle and carbon-nitrogen interaction is weak and has major uncertainties (*Dolman et al.*, 2010; *Reay et al.*, 2008; *Zaehle and Dalmonech*, 2011) and more hence observational and modeling studies especially multi-model intercomparisons will be required to provide more confidence.

Increased atmospheric CO<sub>2</sub> and increased N deposition both increase carbon storage in terrestrial ecosystems. In contrast, increased temperatures decrease terrestrial carbon storage. Our model results suggest that over past and future decades, human-induced changes in N deposition are of the same magnitude but opposite in sign to effects of human-induced temperature changes on terrestrial carbon storage. Thus, the increase in terrestrial carbon stock is likely to be the same magnitude as the effect of CO<sub>2</sub> fertilization on this stock. However, our results indicate that the effectiveness of N deposition in increasing terrestrial carbon storage is likely to decrease as time goes on, and thus temperature effects are likely to ultimately overwhelm effects of increased N deposition. Nevertheless, effects of increased atmospheric CO<sub>2</sub> concentrations are likely to dominate the overall response leading to increased total ecosystem

carbon storage.

### **Acknowledgement**

We thank the funding from Department of Science and Technology under the grant DST0948. Dr. Devaraju is supported by the Divecha Center for Climate Change. Dr. Rajiv K Chaturvedi is supported by the Ministry of Environment and Forests through National Environmental Sciences Fellowship.



## References

- Allen, M. R., and W. J. Ingram: Constraints on future changes in climate and the hydrologic cycle, *Nature*, 419(6903), 224-232, 2002.
- Bala, G., S. Kirshna, N. Devaraju, L. Cao, K. Caldeira, and R. Nemani: An estimate of equilibrium sensitivity of global terrestrial carbon cycle using NCAR CCSM4, *Clim Dynam*, DOI 10.1007/s00382-012-1495-9, 2012.
- Boer, G. J., and V. Arora: Temperature and concentration feedbacks in the carbon cycle, *Geophys Res Lett*, 36, 2009.
- Bonan, G. B., and S. Levis: Quantifying carbon-nitrogen feedbacks in the Community Land Model (CLM4), *Geophys Res Lett*, 37, 2010.
- Canadell, J. G., C. Le Quere, M. R. Raupach, C. B. Field, E. T. Buitenhuis, P. Ciais, T. J. Conway, N. P. Gillett, R. A. Houghton, and G. Marland: Contributions to accelerating atmospheric CO<sub>2</sub> growth from economic activity, carbon intensity, and efficiency of natural sinks, *Proceedings of the National Academy of Sciences of the United States of America*, 104(47), 18866-18870, 2007.
- Churkina, G., V. Brovkin, W. von Bloh, K. Trusilova, M. Jung, and F. Dentener: Synergy of rising nitrogen depositions and atmospheric CO<sub>2</sub> on land carbon uptake moderately offsets global warming, *Global Biogeochem Cy*, 23, 2009.
- Cox, P. M., R. A. Betts, C. D. Jones, S. A. Spall, and I. J. Totterdell: Acceleration of global warming due to carbon-cycle feedbacks in a coupled climate model, *Nature*, 408(6809), 184-187, 2000.
- Cramer, W., et al.: Global response of terrestrial ecosystem structure and function to CO<sub>2</sub> and climate change: results from six dynamic global vegetation models, *Glob Change Biol*, 7(4), 357-373, 2001.
- de Vries, W.: Assessment of the relative importance of nitrogen deposition and climate change on the sequestration of carbon by forests in Europe: an overview Introduction, *Forest Ecology and Management*, 258(8), VII-X, 2009.
- de Vries, W., S. Solberg, M. Dobbertin, H. Sterba, D. Laubhahn, G. J. Reinds, G. J. Nabuurs, P. Gundersen, and M. A. Sutton: Ecologically implausible carbon response?, *Nature*, 451(7180), E1-E3, 2008.
- de Vries, W., et al.: The impact of nitrogen deposition on carbon sequestration by European forests and heathlands, *Forest Ecology and Management*, 258(8), 1814-1823, 2009.
- Dolman, A. J., G. R. van der Werf, M. K. van der Molen, G. Ganssen, J. W. Erisman, and B. Strengers: A Carbon Cycle Science Update Since IPCC AR-4, *Ambio*, 39(5-6), 402-412, 2010.
- Friedlingstein, P., J. L. Dufresne, P. M. Cox, and P. Rayner: How positive is the feedback between climate change and the carbon cycle?, *Tellus B*, 55(2), 692-700, 2003.
- Friedlingstein, P., L. Bopp, P. Ciais, J. L. Dufresne, L. Fairhead, H. LeTreut, P. Monfray, and J. Orr: Positive feedback between future climate change and the carbon cycle, *Geophys Res Lett*, 28(8), 1543-1546, 2001.
- Friedlingstein, P., R. A. Houghton, G. Marland, J. Hackler, T. A. Boden, T. J. Conway, J. G. Canadell, M. R. Raupach, P. Ciais, and C. Le Quere: Update on CO<sub>2</sub> emissions, *Nature Geoscience*, 3(12), 811-812, 2010.
- Friedlingstein, P., et al.: Climate-carbon cycle feedback analysis: Results from the (CMIP)-M-4 model intercomparison, *J Climate*, 19(14), 3337-3353, 2006.

- Galloway, J. N., et al.: Nitrogen cycles: past, present, and future, *Biogeochemistry*, 70(2), 153-226, 2004.
- Govindasamy, B., S. Thompson, A. Mirin, M. Wickett, K. Caldeira, and C. Delire: Increase of carbon cycle feedback with climate sensitivity: results from a coupled climate and carbon cycle model, *Tellus B*, 57(2), 153-163, 2005.
- Held, I. M., and B. J. Soden: Robust responses of the hydrological cycle to global warming, *J Climate*, 19(21), 5686-5699, 2006.
- Holland, E. A., et al.: Variations in the predicted spatial distribution of atmospheric nitrogen deposition and their impact on carbon uptake by terrestrial ecosystems, *J Geophys Res-Atmos*, 102(D13), 15849-15866, 1997.
- Horowitz, L. W., et al.: A global simulation of tropospheric ozone and related tracers: Description and evaluation of MOZART, version 2, *J Geophys Res-Atmos*, 108(D24), 2003.
- Hungate, B. A., J. S. Dukes, M. R. Shaw, Y. Q. Luo, and C. B. Field: Nitrogen and climate change, *Science*, 302(5650), 1512-1513, 2003.
- IPCC: *Climate Change 2007: The physical science basis*, Cambridge University Press, Cambridge, UK and New York, NY, USA, 2007.
- Jain, A., X. J. Yang, H. Kheshgi, A. D. McGuire, W. Post, and D. Kicklighter: Nitrogen attenuation of terrestrial carbon cycle response to global environmental factors, *Global Biogeochem Cy*, 23, 2009.
- Jones, C., J. Lowe, S. Liddicoat, and R. Betts: Committed terrestrial ecosystem changes due to climate change, *Nature Geoscience*, 2(7), 484-487, 2009.
- Joos, F., J. L. Sarmiento, and U. Siegenthaler: Estimates of the Effect of Southern-Ocean Iron Fertilization on Atmospheric CO<sub>2</sub> Concentrations, *Nature*, 349(6312), 772-775, 1991.
- Kloster, S., N. M. Mahowald, J. T. Randerson, P. E. Thornton, F. M. Hoffman, S. Levis, P. J. Lawrence, J. J. Feddema, K. W. Oleson, and D. M. Lawrence: Fire dynamics during the 20th century simulated by the Community Land Model, *Biogeosciences*, 7(6), 1877-1902, 2010.
- Korner, C.: Plant CO<sub>2</sub> responses: an issue of definition, time and resource supply, *New Phytol*, 172(3), 393-411, 2006.
- Krupa, S., M. T. McGrath, C. P. Andersen, F. L. Booker, K. O. Burkey, A. H. Chappelka, B. I. Chevone, E. J. Pell, and B. A. Zilinskas: Ambient ozone and plant health, *Plant Disease*, 85(1), 4-12, 2001.
- Lamarque, J. F., et al.: Assessing future nitrogen deposition and carbon cycle feedback using a multimodel approach: Analysis of nitrogen deposition, *J Geophys Res-Atmos*, 110(D19), 2005.
- Lawrence, D. M., et al.: Parameterization Improvements and Functional and Structural Advances in Version 4 of the Community Land Model, *Journal of Advances in Modeling Earth Systems*, 3, 2011.
- Le Quere, C., et al.: Trends in the sources and sinks of carbon dioxide, *Nature Geoscience*, 2(12), 831-836, 2009.
- Lemus, R., E. C. Brummer, C. L. Burras, K. J. Moore, M. F. Barker, and N. E. Molstad: Effects of nitrogen fertilization on biomass yield and quality in large fields of established switchgrass in southern Iowa, USA, *Biomass & Bioenergy*, 32(12), 1187-1194, 2008.
- Lloyd, J., and J. A. Taylor: On the Temperature-Dependence of Soil Respiration, *Funct Ecol*, 8(3), 315-323, 1994.

- Magnani, F., et al.: The human footprint in the carbon cycle of temperate and boreal forests, *Nature*, 447(7146), 848-850, 2007.
- Matthews, H. D., A. J. Weaver, and K. J. Meissner: Terrestrial carbon cycle dynamics under recent and future climate change, *J Climate*, 18(10), 1609-1628, 2005.
- Nadelhoffer, K. J., B. A. Emmett, P. Gundersen, O. J. Kjonaas, C. J. Koopmans, P. Schleppi, A. Tietema, and R. F. Wright: Nitrogen deposition makes a minor contribution to carbon sequestration in temperate forests, *Nature*, 398(6723), 145-148, 1999.
- Newingham, B. A., C. H. Vanier, T. N. Charlet, K. Ogle, S. D. Smith, and R. S. Nowak: No cumulative effect of 10 years of elevated [CO<sub>2</sub>] on perennial plant biomass components in the Mojave Desert, *Glob Change Biol*, 19(7), 2168-2181, 2013.
- Norby, R. J., et al.: Forest response to elevated CO<sub>2</sub> is conserved across a broad range of productivity, *Proceedings of the National Academy of Sciences of the United States of America*, 102(50), 18052-18056, 2005.
- Oleson, K. W., D. M. Lawrence, G. B. Bonan, M. G. Flanner, E. Kluzek, P. J. Lawrence, S. Levis, S. C. Swenson, P. Thornton, and Others: Technical Description of version 4.0 of the Community Land Model (CLM) *Rep.*, 266 pp, National Center for Atmospheric Research, Boulder, Colorado, USA, 2010.
- Oleson, K. W., et al.: Improvements to the Community Land Model and their impact on the hydrological cycle, *J Geophys Res-Biogeophys*, 113(G1), -, 2008.
- Pan, Y. D., et al.: A Large and Persistent Carbon Sink in the World's Forests, *Science*, 333(6045), 988-993, 2011.
- Qian, T. T., A. Dai, K. E. Trenberth, and K. W. Oleson: Simulation of global land surface conditions from 1948 to 2004. Part I: Forcing data and evaluations, *Journal of Hydrometeorology*, 7(5), 953-975, 2006.
- Rasmussen, L.: Effects of afforestation and deforestation on the deposition, cycling and leaching of elements, *Agriculture Ecosystems & Environment*, 67(2-3), 153-159, 1998.
- Reay, D. S., F. Dentener, P. Smith, J. Grace, and R. A. Feely: Global nitrogen deposition and carbon sinks, *Nature Geoscience*, 1(7), 430-437, 2008.
- Schimel, D. S.: TERRESTRIAL ECOSYSTEMS AND THE CARBON-CYCLE, *Glob Change Biol*, 1(1), 77-91, 1995.
- Schindler, D. W., and S. E. Bayley: THE BIOSPHERE AS AN INCREASING SINK FOR ATMOSPHERIC CARBON - ESTIMATES FROM INCREASED NITROGEN DEPOSITION, *Global Biogeochem Cy*, 7(4), 717-733, 1993.
- Stockli, R., D. M. Lawrence, G. Y. Niu, K. W. Oleson, P. E. Thornton, Z. L. Yang, G. B. Bonan, A. S. Denning, and S. W. Running: Use of FLUXNET in the community land model development, *J Geophys Res-Biogeophys*, 113(G1), -, 2008.
- Thomas, R. Q., C. D. Canham, K. C. Weathers, and C. L. Goodale: Increased tree carbon storage in response to nitrogen deposition in the US, *Nature Geoscience*, 3(1), 13-17, 2010.
- Thompson, S. L., B. Govindasamy, A. Mirin, K. Caldeira, C. Delire, J. Milovich, M. Wickert, and D. Erickson: Quantifying the effects of CO<sub>2</sub>-fertilized vegetation on future global climate and carbon dynamics, *Geophys Res Lett*, 31(23), L23211, doi:10.1029/2004GL021239, 2004.
- Thornton, P. E., and N. A. Rosenbloom: Ecosystem model spin-up: Estimating steady state conditions in a coupled terrestrial carbon and nitrogen cycle model, *Ecological Modelling*, 189(1-2), 25-48, 2005.
- Thornton, P. E., and N. E. Zimmermann: An improved canopy integration scheme for a land

- surface model with prognostic canopy structure, *J Climate*, 20(15), 3902-3923, 2007.
- Thornton, P. E., S. C. Doney, K. Lindsay, J. K. Moore, N. Mahowald, J. T. Randerson, I. Fung, J. F. Lamarque, J. J. Feddema, and Y. H. Lee: Carbon-nitrogen interactions regulate climate-carbon cycle feedbacks: results from an atmosphere-ocean general circulation model, *Biogeosciences*, 6(10), 2099-2120, 2009.
- Thornton, P. E., et al.: Modeling and measuring the effects of disturbance history and climate on carbon and water budgets in evergreen needleleaf forests, *Agricultural and Forest Meteorology*, 113(1-4), 185-222, 2002.
- Tian, H., et al.: Food benefit and climate warming potential of nitrogen fertilizer uses in China, *Environmental Research Letters*, 7, doi:10.1088/1748-9326/1087/1084/044020, 2012.
- Vitousek, P. M., and R. W. Howarth: NITROGEN LIMITATION ON LAND AND IN THE SEA - HOW CAN IT OCCUR, *Biogeochemistry*, 13(2), 87-115, 1991.
- Xu, R., I. C. Prentice, R. Spahni, and H. S. Niu: Modelling terrestrial nitrous oxide emissions and implications for climate feedback, *New Phytol*, 196(2), 472-488, 2012.
- Yang, X. J., V. Wittig, A. K. Jain, and W. Post: Integration of nitrogen cycle dynamics into the Integrated Science Assessment Model for the study of terrestrial ecosystem responses to global change, *Global Biogeochem Cy*, 23, 2009.
- Zaehle, S., and D. Dalmonch: Carbon-nitrogen interactions on land at global scales: current understanding in modelling climate biosphere feedbacks, *Current Opinion in Environmental Sustainability*, 3(5), 311-320, 2011.
- Zeng, N., H. F. Qian, E. Munoz, and R. Iacono: How strong is carbon cycle-climate feedback under global warming?, *Geophys Res Lett*, 31(20), 2004.
- Zickfeld, K., M. Eby, H. D. Matthews, A. Schmittner, and A. J. Weaver: Nonlinearity of Carbon Cycle Feedbacks, *J Climate*, 24(16), 4255-4275, 2011.

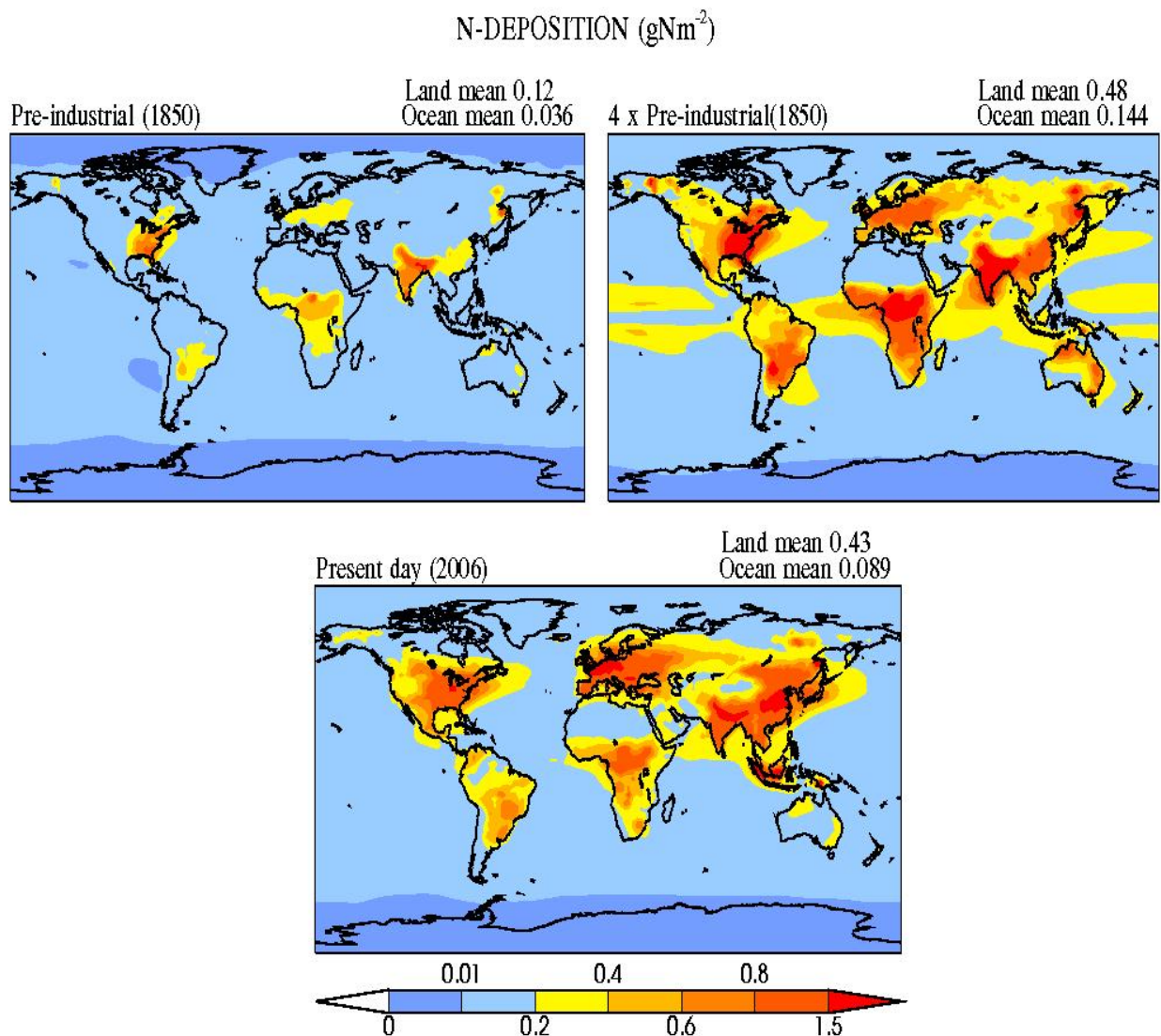
**Table1:** Global mean changes in key ecosystem variables in the last 100 years of 1000-year simulations. Values in parenthesis are % changes.

Key Terrestrial Variables	1N	Set 1 Experiments: Increasing N deposition alone			Set 2 Experiments: Increasing N deposition with 2K warming				Set 3 Experiments: Increasing N deposition with doubled CO <sub>2</sub> concentration			
		2N-1N	4N-1N	8N-1N	1N2K-1N	2N2K-2N	4N2K-4N	8N2K-8N	1N2xCO2-1N	2N2xCO2-2N	4N2xC-O2-4N	8N2xC-O2-8N
GPP (PgC/yr)	184.4	6.2 (3.4)	16.4 (8.9)	30.8 (16.7)	-17.4 (-9.4)	-18.4 (-9.7)	-20.0 (-10.0)	-22.2 (-10.3)	53.8 (29.2)	56.0 (29.4)	60.0 (29.9)	66.8 (31.0)
NPP(PgC/yr)	63.8	2.6 (4.0)	6.8 (10.6)	12.8 (20.1)	-8.0 (-12.6)	-8.4 (-12.7)	-9.1 (-12.9)	-10.1 (-13.2)	18.0 (28.2)	18.8 (28.3)	20.3 (28.7)	22.8 (29.7)
Vegetation Carbon (PgC)	1066.8	28.0 (3.0)	45.6 (4.7)	65.4 (6.45)	-179.0 (-19.0)	-185.7 (-19.2)	-195.8 (-19.3)	-210.5 (-19.5)	432.8 (40.6)	445.3 (40.5)	468.9 (40.8)	508.3 (41.5)
Vegetation Nitrogen (PgN)	4.9	0.2 (3.5)	0.5 (9.1)	0.9 (17.3)	-0.7 (-14.8)	-0.8 (-14.9)	-0.8 (-15.0)	-0.9 (-15.3)	1.6 (31.9)	1.6 (32.0)	1.7 (32.4)	1.9 (33.3)
Soil Carbon (PgC)	743.8	32.2 (4.3)	86.5 (11.6)	168.1 (22.6)	-81.5 (-11.0)	-85.6 (-11.0)	-92.5 (-11.1)	-103.6 (-11.4)	151.1 (20.3)	158.8 (20.5)	172.7 (20.8)	196.9 (21.6)
Soil Nitrogen (PgN)	74.2	3.2 (4.3)	8.6 (11.6)	16.8 (22.6)	-8.1 (-11.0)	-8.5 (-11.0)	-9.2 (-11.1)	-10.3 (-11.4)	15.1 (20.3)	15.8 (20.5)	17.2 (20.8)	19.7 (21.6)
Total Ecosystem Carbon (PgC)	1946.1	69.0 (3.6)	183.5 (9.4)	351.9 (18.1)	-303.4 (-15.6)	-315.8 (-15.7)	-335.5 (-15.8)	-365.1 (-15.9)	627.7 (32.3)	649.5 (32.2)	689.9 (32.4)	758.4 (33.0)
Total Ecosystem Nitrogen (PgN)	79.6	3.4 (4.3)	9.1 (11.5)	17.7 (22.2)	-8.9 (-11.2)	-9.4 (-11.3)	-10.1 (-11.4)	-11.3 (-11.6)	16.8 (21.1)	17.6 (21.2)	19.1 (21.5)	21.7 (22.3)

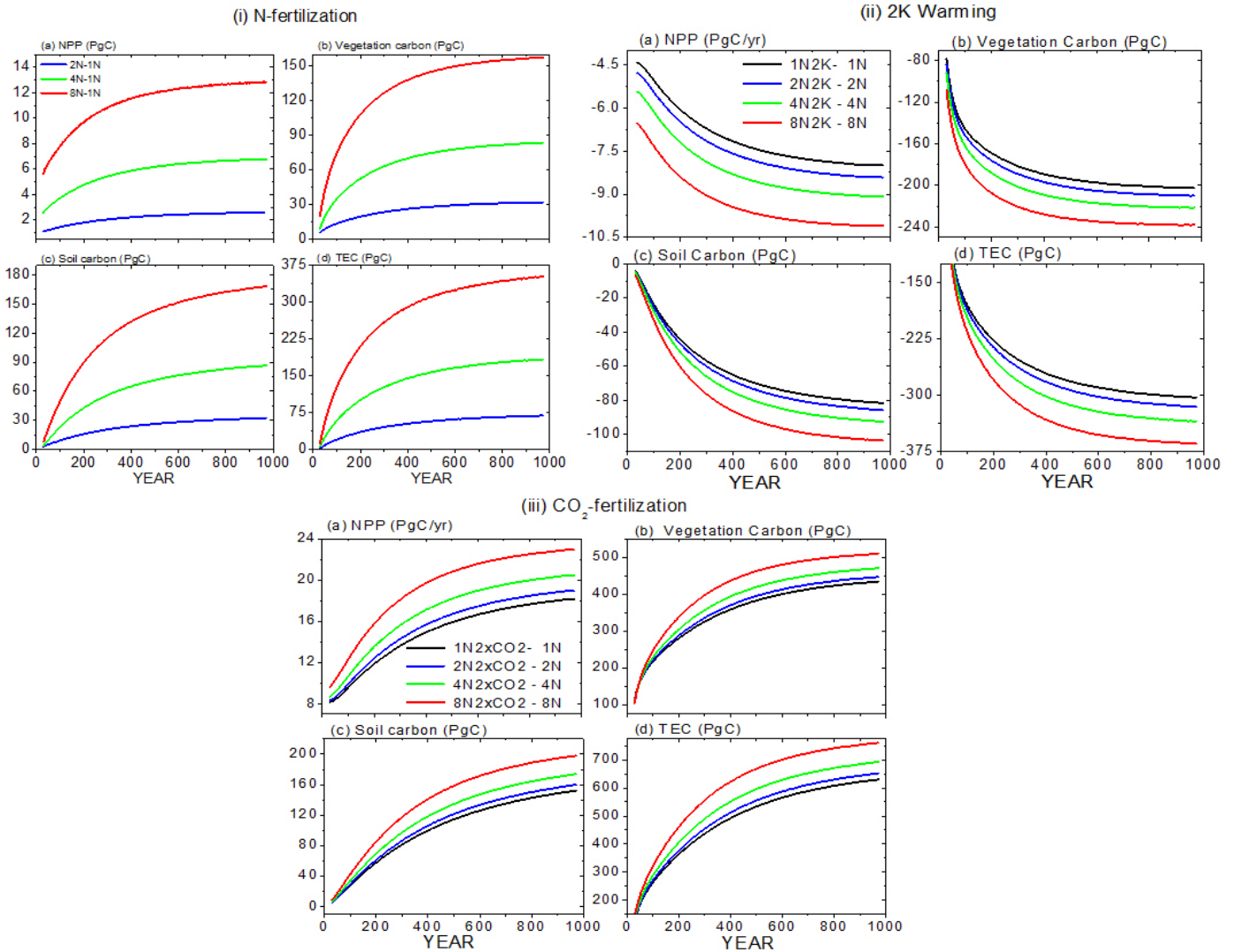
**Table 2:** Terrestrial Ecosystem Carbon (TEC) sensitivity to CO<sub>2</sub> fertilization ( $\beta_L$ ) and its changes under increasing N deposition, TEC sensitivity to warming ( $\gamma_L$ ) and its changes under increasing N deposition and TEC sensitivity to nitrogen deposition ( $\delta_L$ ) and its changes under increasing CO<sub>2</sub> concentration and warming. The pairs of experiments used to calculate the sensitivities are shown in Fig. 7

	$\beta_L$ (PgC/ppm)	$\gamma_L$ (PgC/K)	$\delta_L$ (PgC/(TgN/yr))		
			N deposition	With 2xCO <sub>2</sub>	With 2K
1N	2.21	-152			
2N	2.30	-158	3.41	4.48	2.79
4N	2.43	-167.7	3.01	4.03	2.48
8N	2.67	-182	2.47	3.39	2.04

**Fig. 1** Spatial distribution of N deposition in pre-industrial (1850; top left panel) period, four times the pre-industrial N deposition case (4N; top right panel) and present day (2006; bottom panel) in the input datasets of CLM4. The global mean pre-industrial N deposition over land is  $0.12 \text{ gN/m}^2$  (a total land deposition of  $20.3 \text{ TgNyr}^{-1}$ ). The deposition in the experiment 4N ( $80.6 \text{ TgNyr}^{-1}$ ) is approximately close to the present day deposition of  $0.43 \text{ gN/m}^2$  ( $\sim 73.1 \text{ TgNyr}^{-1}$ ). We infer from this figure that the spatial pattern of N deposition used in our experiments is similar to present day deposition.

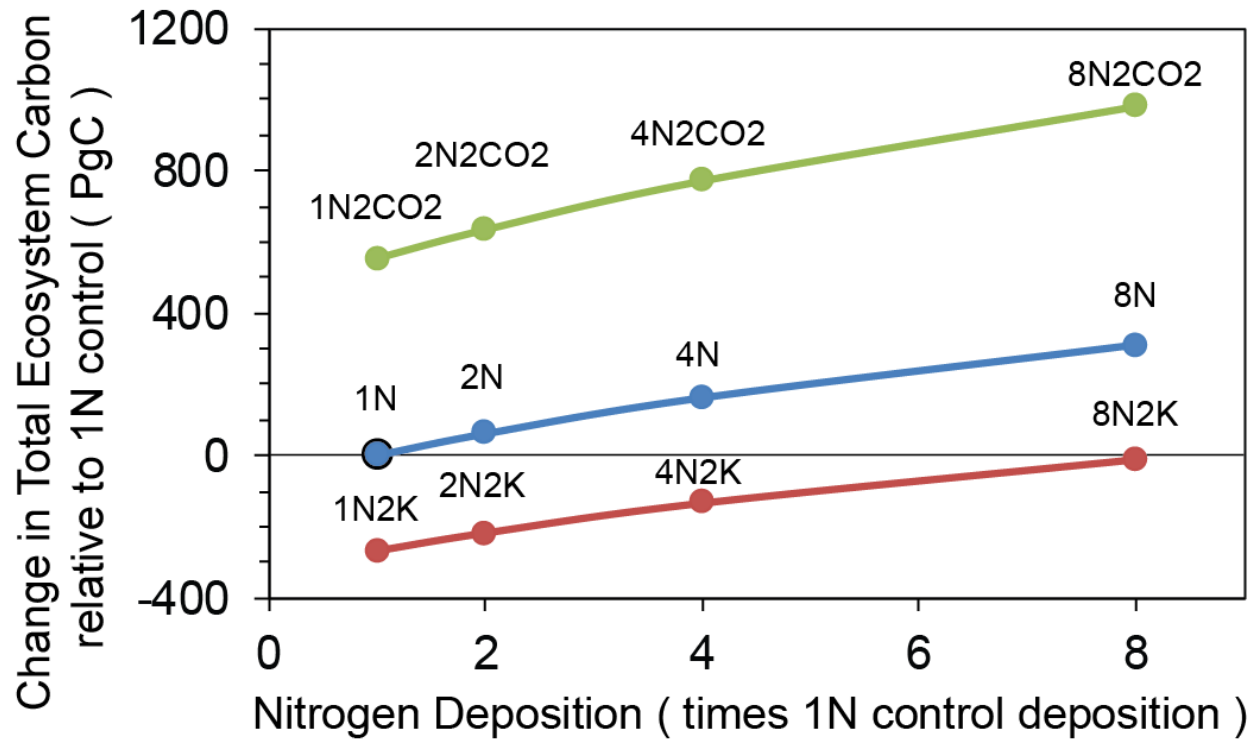


**Fig. 2** CLM4 simulated global and annual mean changes in NPP, vegetation carbon, soil carbon and total ecosystem carbon for (i) N deposition, (ii) climate warming and (iii) CO<sub>2</sub>-fertilization at various levels of N deposition. A 57-year running average is applied to original annual mean data.

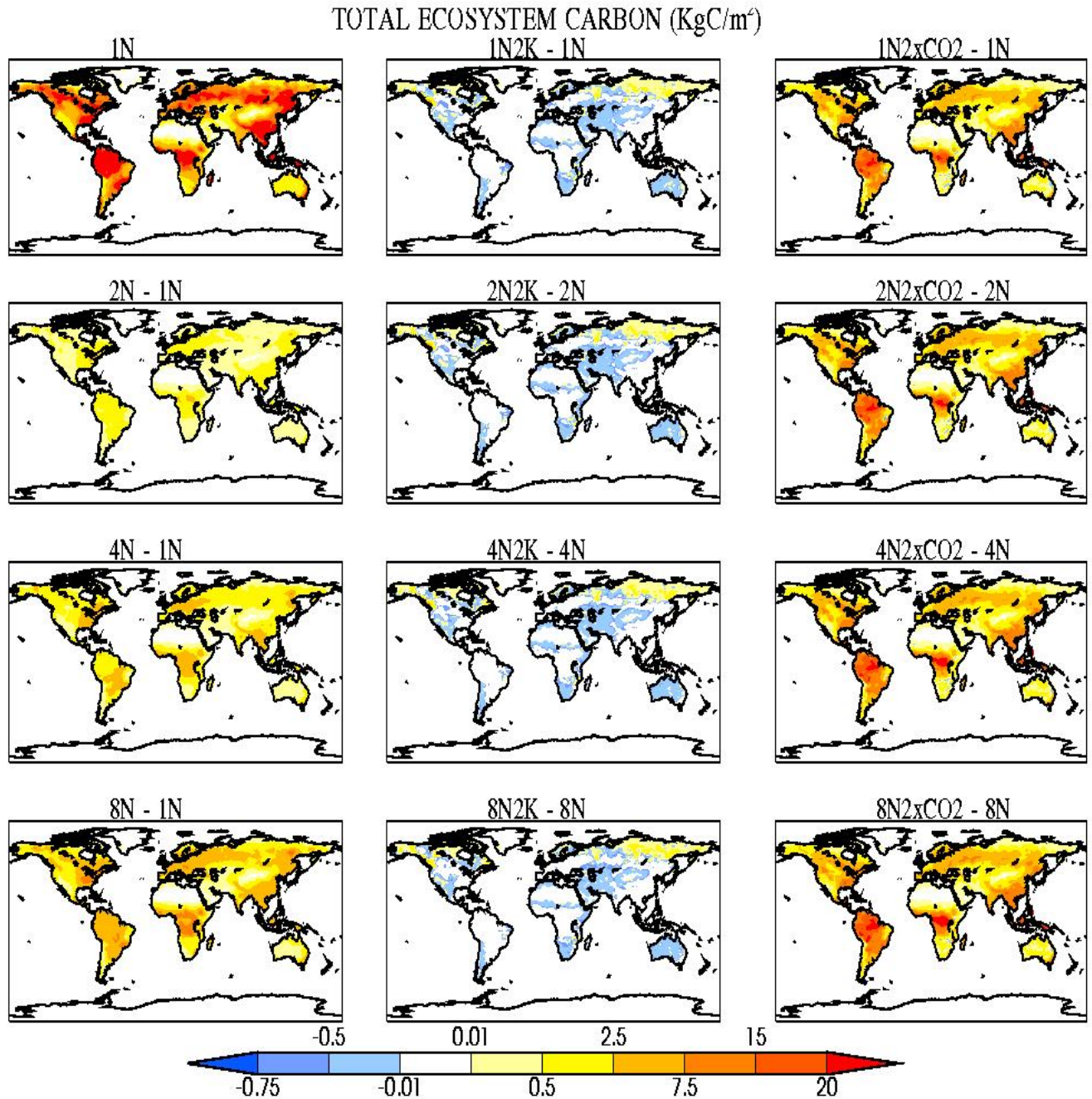




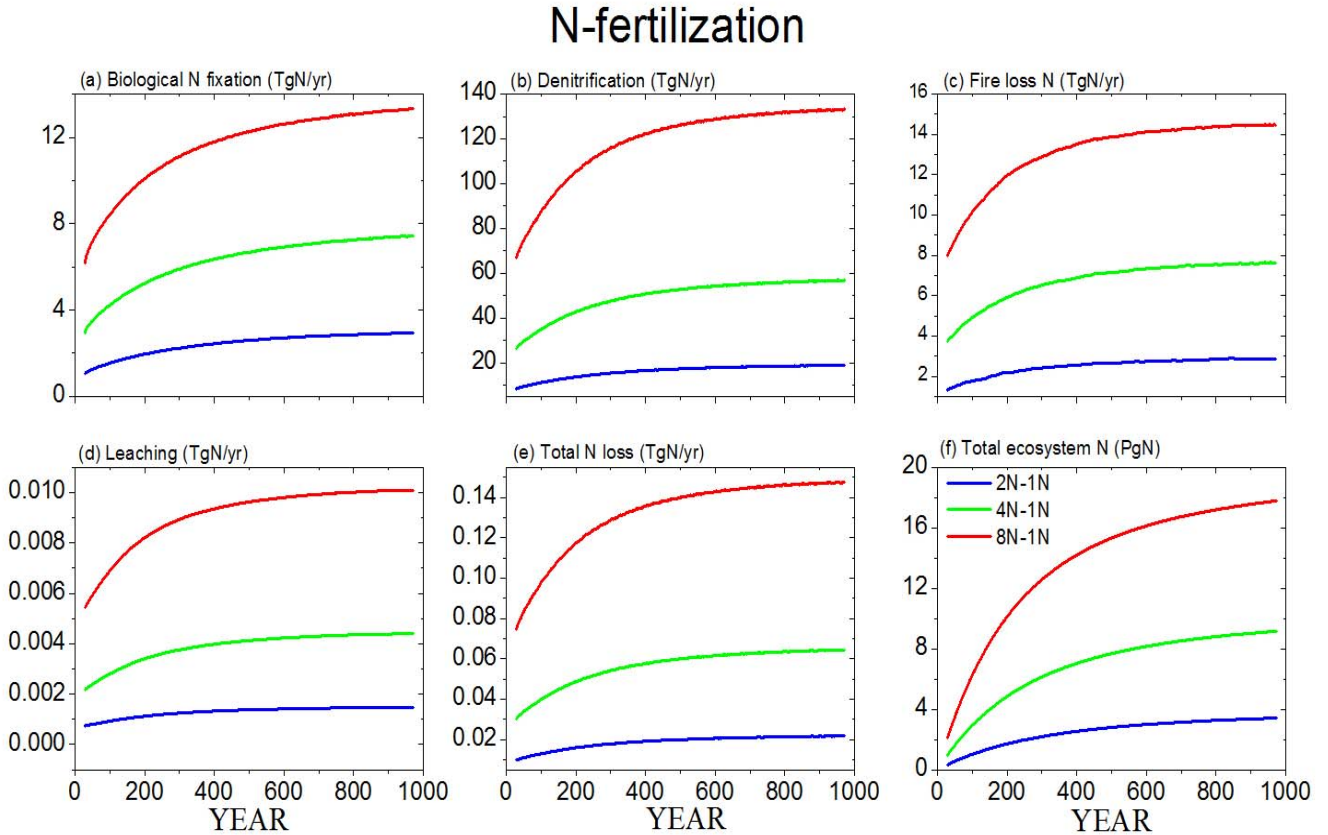
**Fig. 3** Total Ecosystem Carbon (TEC) changes relative to the control simulation (1N) in the three sets of simulations. Blue line shows effect of increased N deposition. Green line shows effect of both doubled atmospheric CO<sub>2</sub> content and added N deposition. Brown line shows effect of both 2K warming and added N deposition. The effect of an eight-fold increase in N deposition is approximately the same magnitude but opposite in sign to that of a 2K warming.



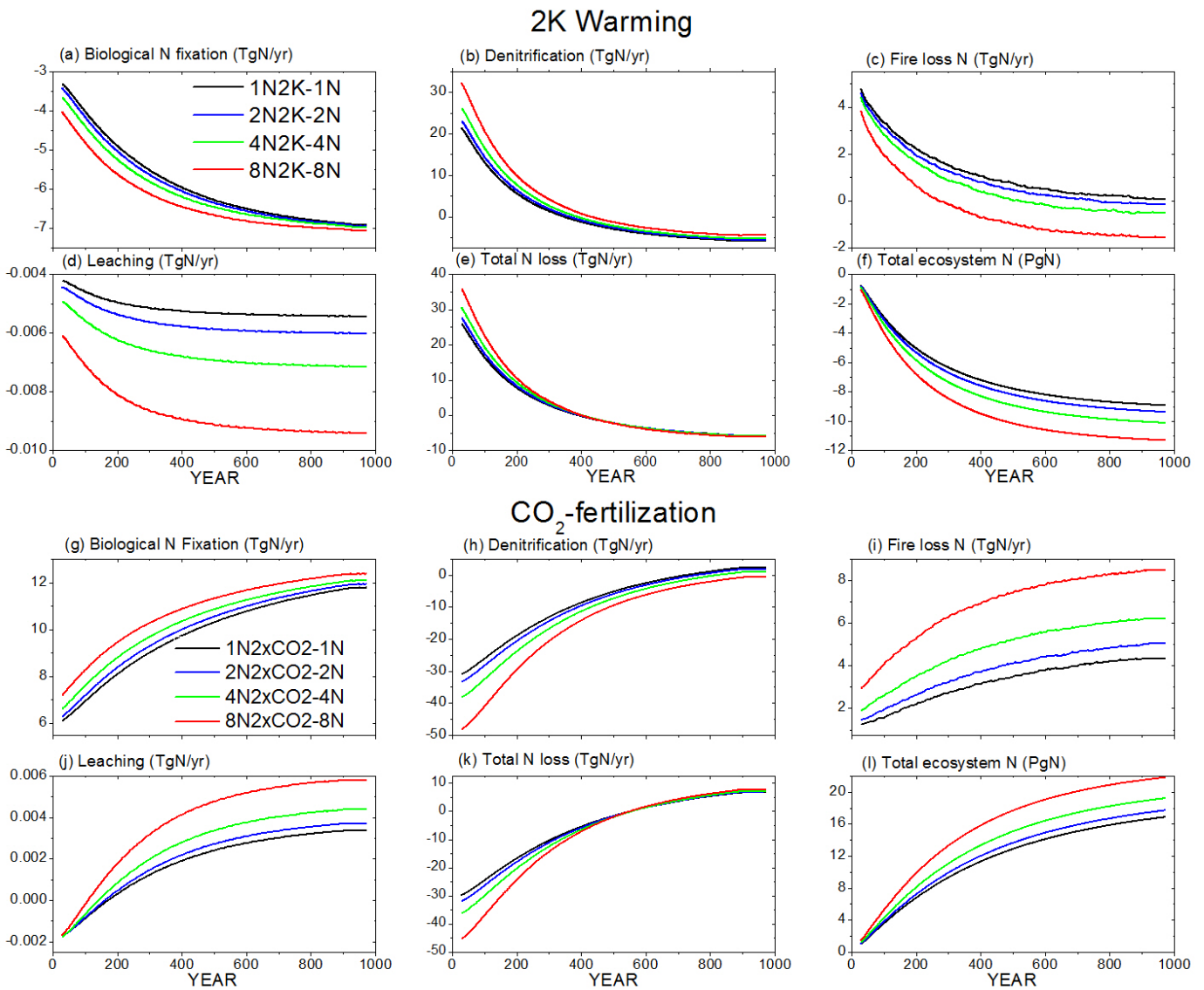
**Fig. 4** Total Ecosystem Carbon (TEC) changes in the three sets of simulations. Left panels show TEC changes for N deposition and middle and right panels show TEC changes for climate warming and CO<sub>2</sub>-fertilization under different background N deposition, respectively



**Fig. 5:** Changes in N-budget for the terrestrial ecosystem in 2N (blue line), 4N (green line) and 8N (red line) simulations relative to 1N: Changes in annual mean (a) biological N fixation (BNF), (b) denitrification, (c) fire loss N, (d) leaching, and (e) the total N loss from ecosystem (sum of denitrification, fire loss N and leaching). Total ecosystem N (f) is the cumulative sum of BNF and N deposition (constant in time for all simulations) minus cumulative sum of total N loss from ecosystem. A 57-year running average is applied to original annual mean data.

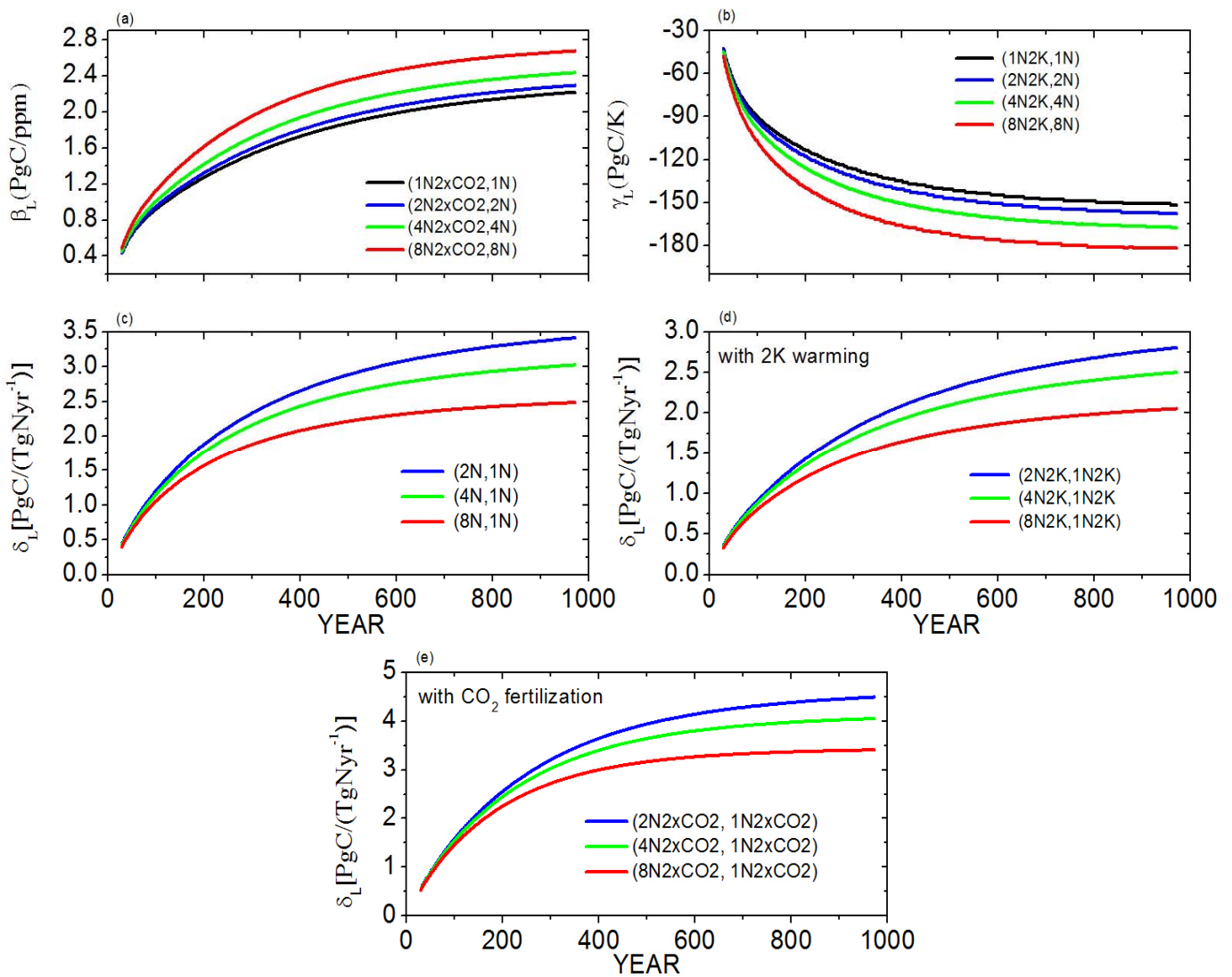


**Fig.6** Changes in N-variables for the terrestrial ecosystem in the 1000-year simulations 1N (black line), 2N (blue line), 4N (green line) and 8N (red line) in presence of 2K warming (a-f) and CO<sub>2</sub> fertilization (g-l): The global- and annual-mean changes of (a,g) biological N fixation (BNF), (b, h) denitrification, (c, i) fire loss N, (d, j) leaching, (e, k) total N loss from ecosystem (sum of denitrification, fire loss N and leaching) and (f,l) total ecosystem N (TEN). The order of magnitude of N-fluxes indicates that denitrification flux is the dominant process controlling N-stock changes. We find that the TEN losses in (e) are higher in presence of 2K warming at higher N deposition levels due to larger decline in biological N fixation (a) and increase in denitrification (b). In the case of CO<sub>2</sub> fertilization, TEN gains are larger at higher N deposition levels because of larger increase in BNF and decline in denitrification.

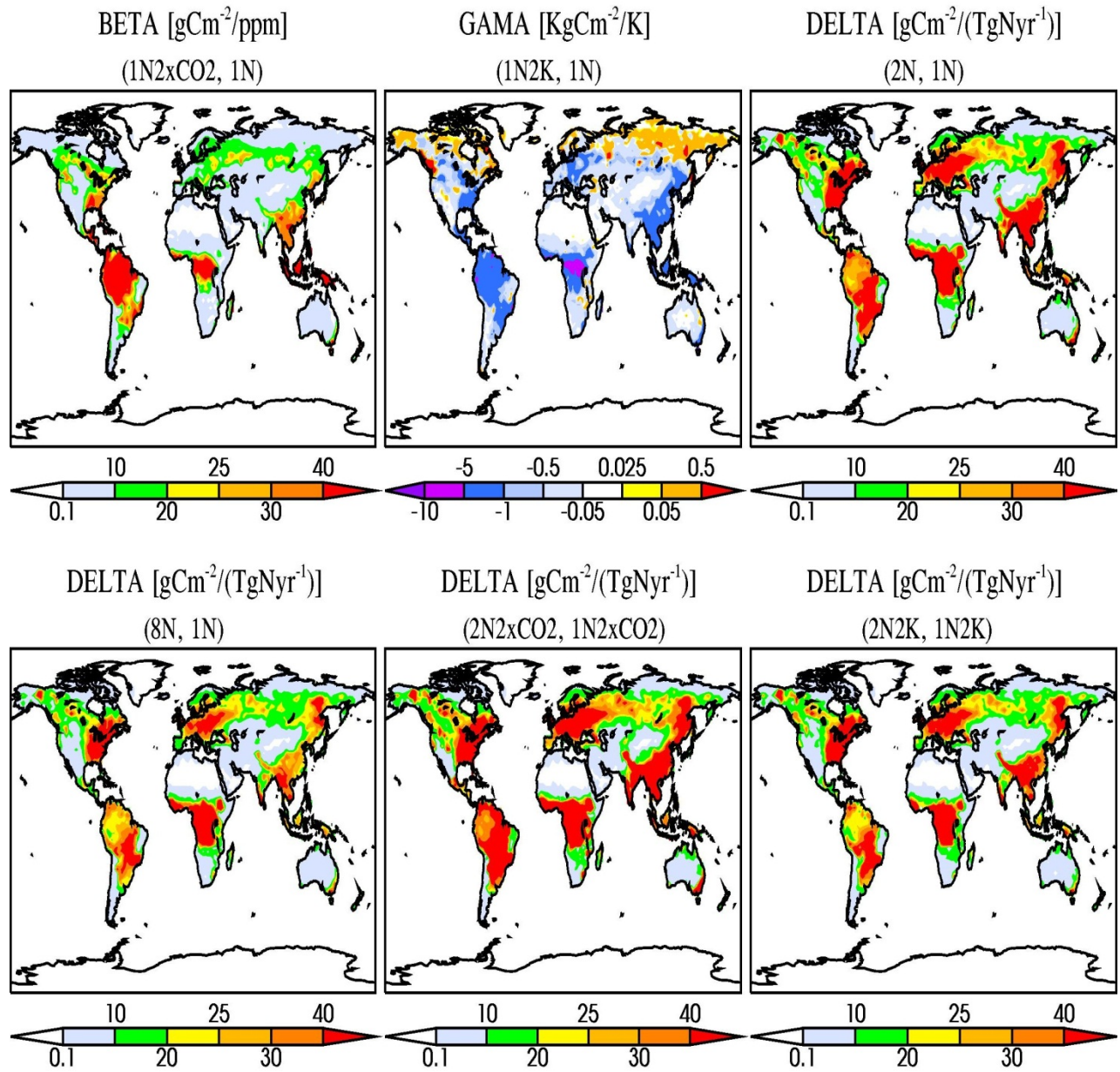


**Fig.7** Evolution of terrestrial ecosystem carbon (TEC) storage sensitivity to CO<sub>2</sub>, climate warming and increased N deposition in our 1000-year simulations. TEC sensitivity to (a) atmospheric CO<sub>2</sub> ( $\beta_L$ ) at different levels of N deposition, (b) temperature ( $\gamma_L$ ) at different levels of N deposition, (c) N deposition ( $\delta_L$ ), (d) N deposition ( $\delta_L$ ) in presence of 2Kwarming and (e) N deposition ( $\delta_L$ ) in presence of doubled CO<sub>2</sub>. A 57-year running average is applied to original annual mean TEC data. The pairs of experiments indicated in the legend are the experiments that are used to calculate the respective sensitivities (Eqn. 1-3).

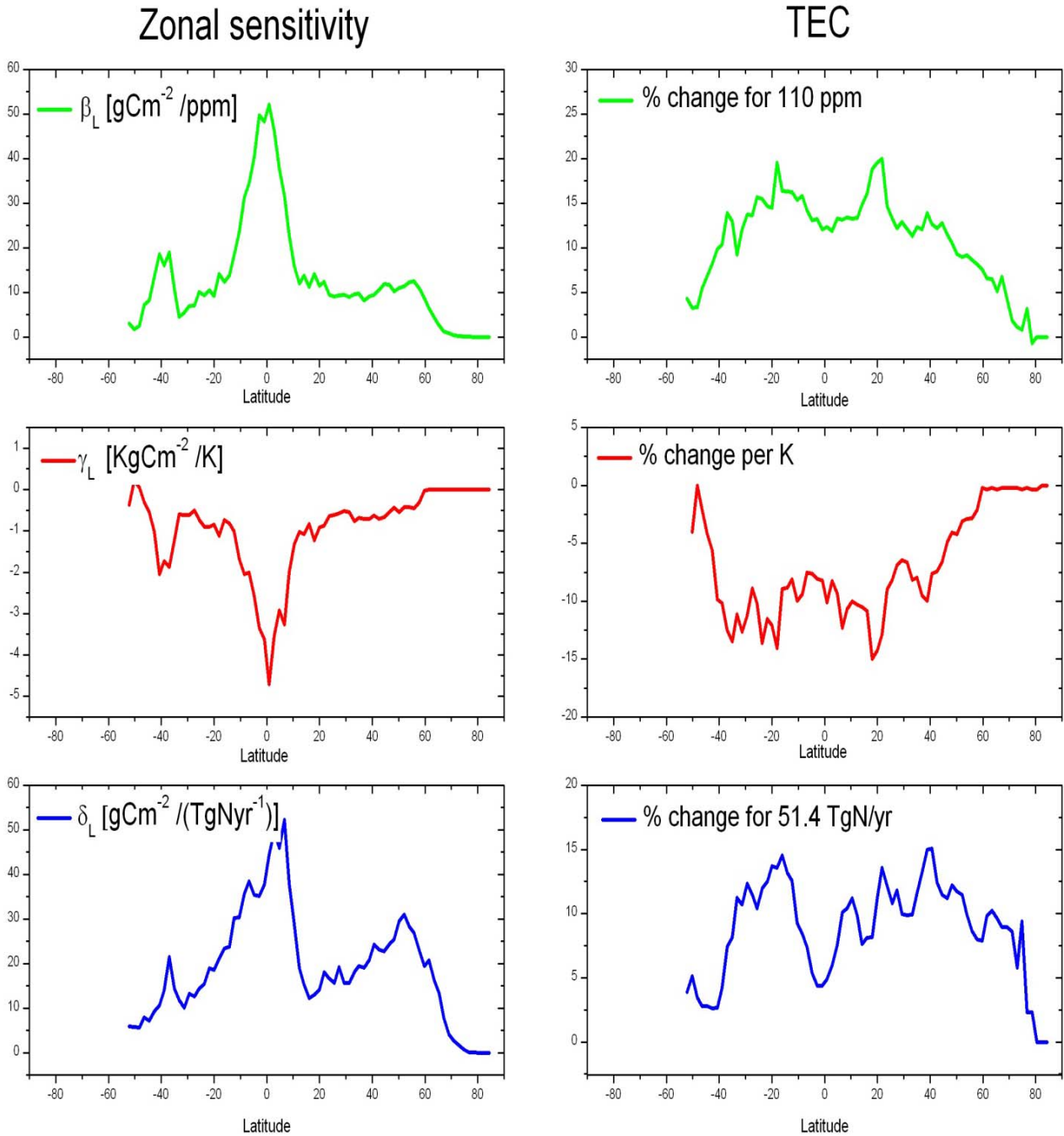
### Sensitivity of TEC



**Fig. 8** Spatial pattern of total ecosystem carbon (TEC) sensitivity for CO<sub>2</sub> change ( $\beta_L$ ), climate change ( $\gamma_L$ ) and N deposition ( $\delta_L$ ; top panels). The experiments used in the calculation of sensitivity are shown in the parenthesis. The bottom panels illustrate the changes in delta for larger changes in N deposition (general decline), and in the presence of CO<sub>2</sub>-fertilization (increase) and climate change (decline).



**Fig. 9** Zonal mean pattern total ecosystem carbon (TEC) sensitivity for CO<sub>2</sub> change ( $\beta_L$ ), climate change ( $\gamma_L$ ) and N deposition ( $\delta_L$ ; left panels). The right panels show the percentage changes in TEC during the historical period due to CO<sub>2</sub> change (110 ppm), climate warming (~ 1K) and N deposition (51.4 TgN/yr).



## **Supplemental Material**

### **Nitrogen deposition: How important is it for global terrestrial carbon uptake?**

G. Bala<sup>1\*</sup>, N. Devaraju<sup>1</sup>, R. K. Chaturvedi<sup>2</sup>, K. Caldeira<sup>3</sup>, R. Nemani<sup>4</sup>

<sup>1</sup>*Divecha Center for Climate Change & Center for Atmospheric and Oceanic Sciences  
Indian Institute of Science, Bangalore -560012, India*

<sup>2</sup>*Center for Sustainable Technologies, Indian Institute of Science, Bangalore -560012, India*

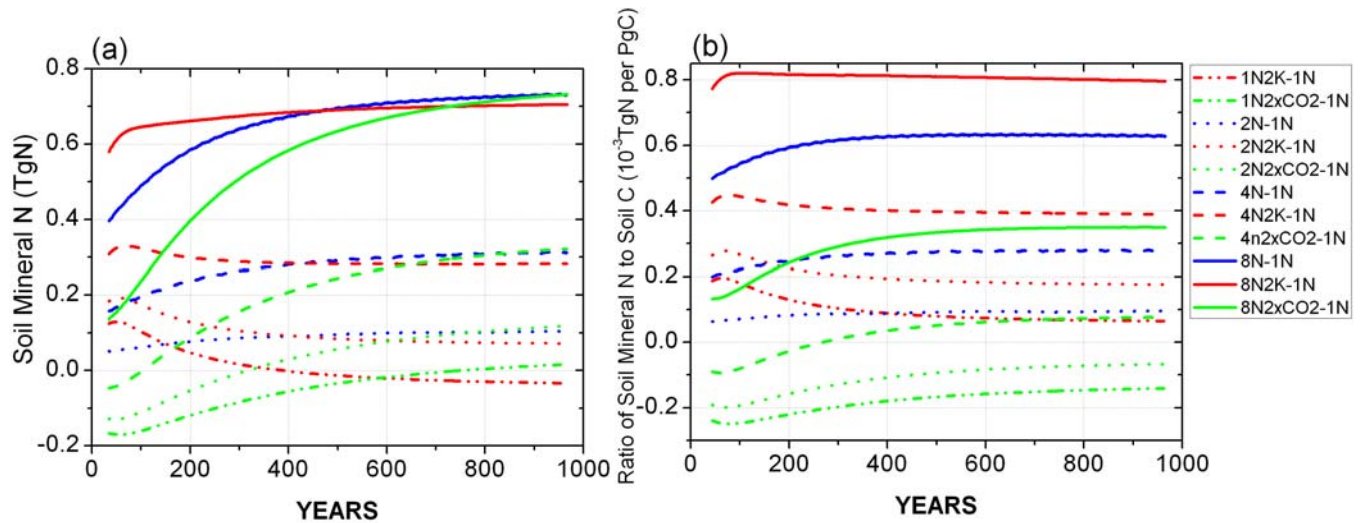
<sup>3</sup>*Department of Global Ecology, Carnegie Institution, 260 Panama Street, Stanford, CA 94305,  
USA*

<sup>4</sup>*NASA Ames Research Center, Moffett Field, CA 94035, USA*

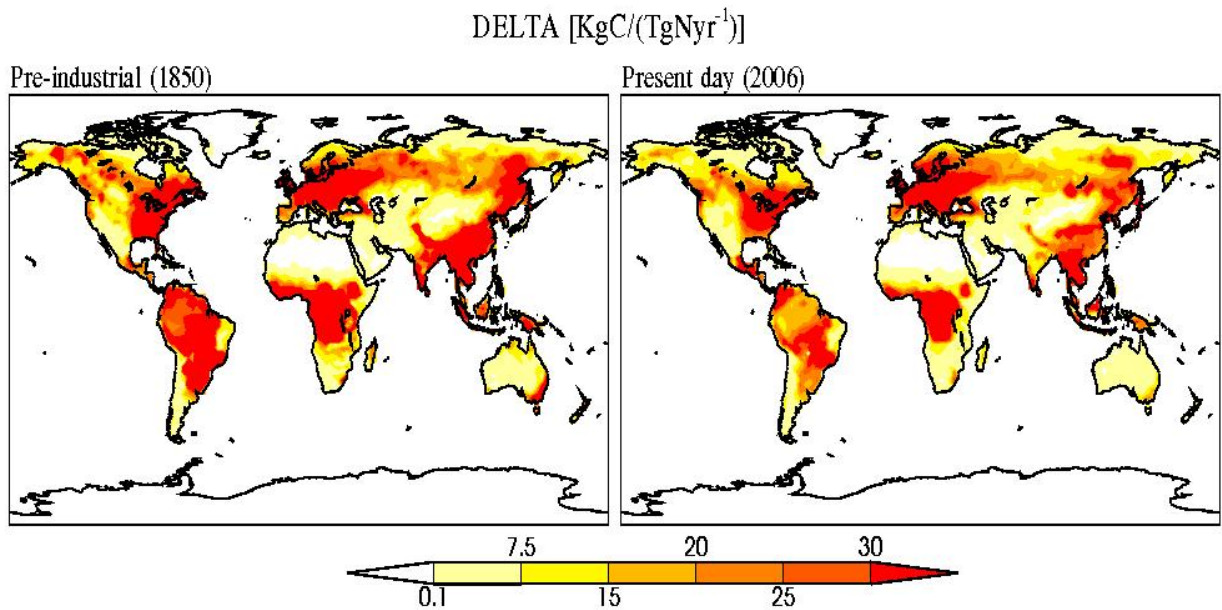
\*Corresponding Author: [gbala@caos.iisc.ernet.in](mailto:gbala@caos.iisc.ernet.in)



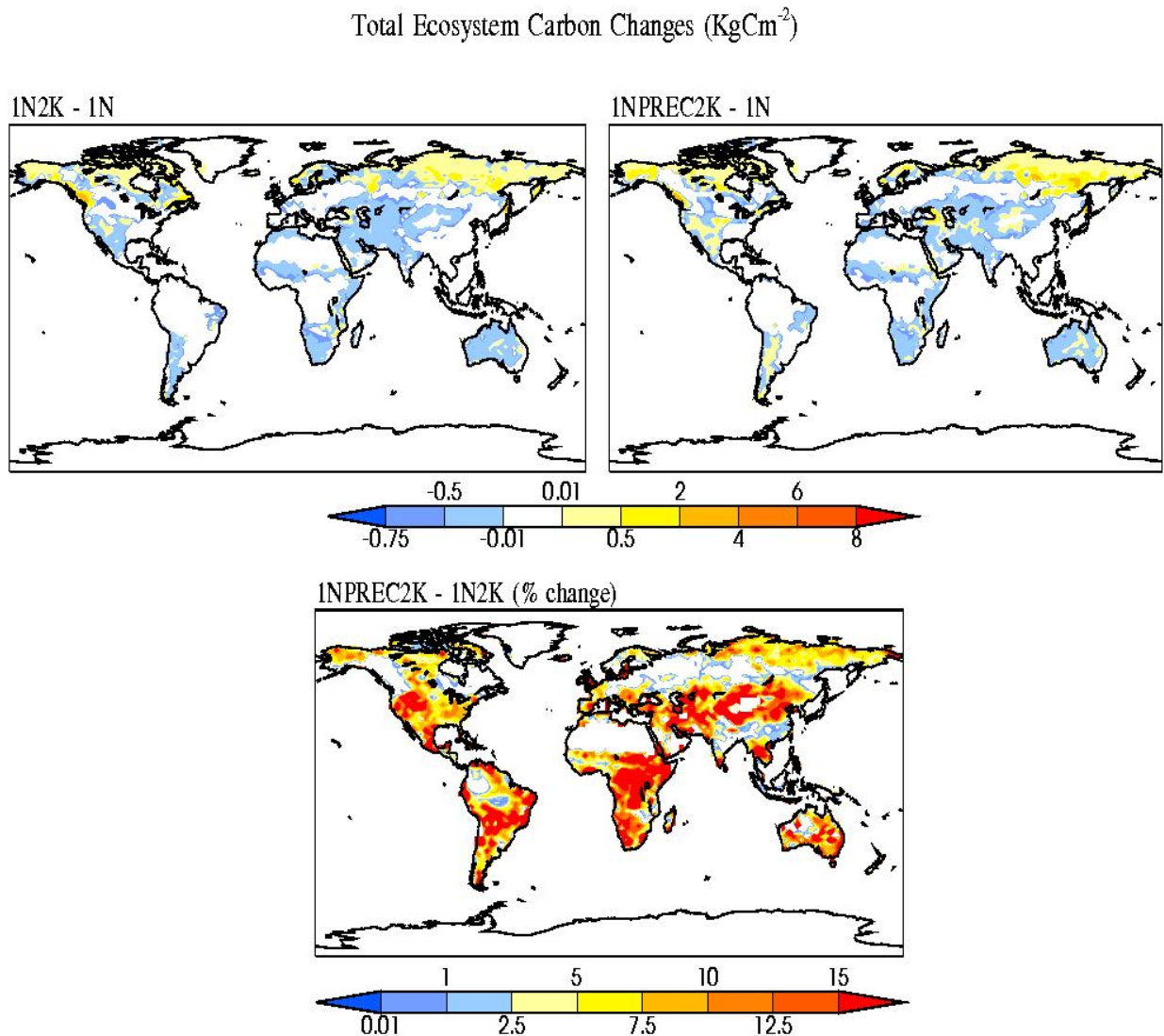
**Figure S1:** CLM4 simulated global and annual mean changes of (a) soil mineral N and (b) soil mineral N per unit soil carbon relative to control (1N). Panel (a) shows the total amount of mineral nitrogen declines in the 2K warming cases, because the amount of soil organic matter (carbon) is smaller due to decline in ecosystem productivity. In 2xCO<sub>2</sub> cases, the overall increase in soil mineral N is due to CO<sub>2</sub> fertilization induced increase in ecosystem productivity but in the initial stages there is more demand for soil mineral N and hence there is a decline relative to 1N. Soil mineral N increases for N deposition cases 2N, 4N and 8N. Panel (b) shows that the soil mineral N per unit of soil carbon increases for 2K warming (red lines) and increased N deposition cases (blue lines) and also increases for 2xCO<sub>2</sub> (green line) cases. 2K warming causes increased decomposition and hence increased nitrogen mineralization per unit of soil carbon. In some 2xCO<sub>2</sub> cases (1N2xCO<sub>2</sub> and 2N2xCO<sub>2</sub>), this quantity declines because of more N demand and larger soil carbon pools. A 57-year running average is applied to original annual mean data.



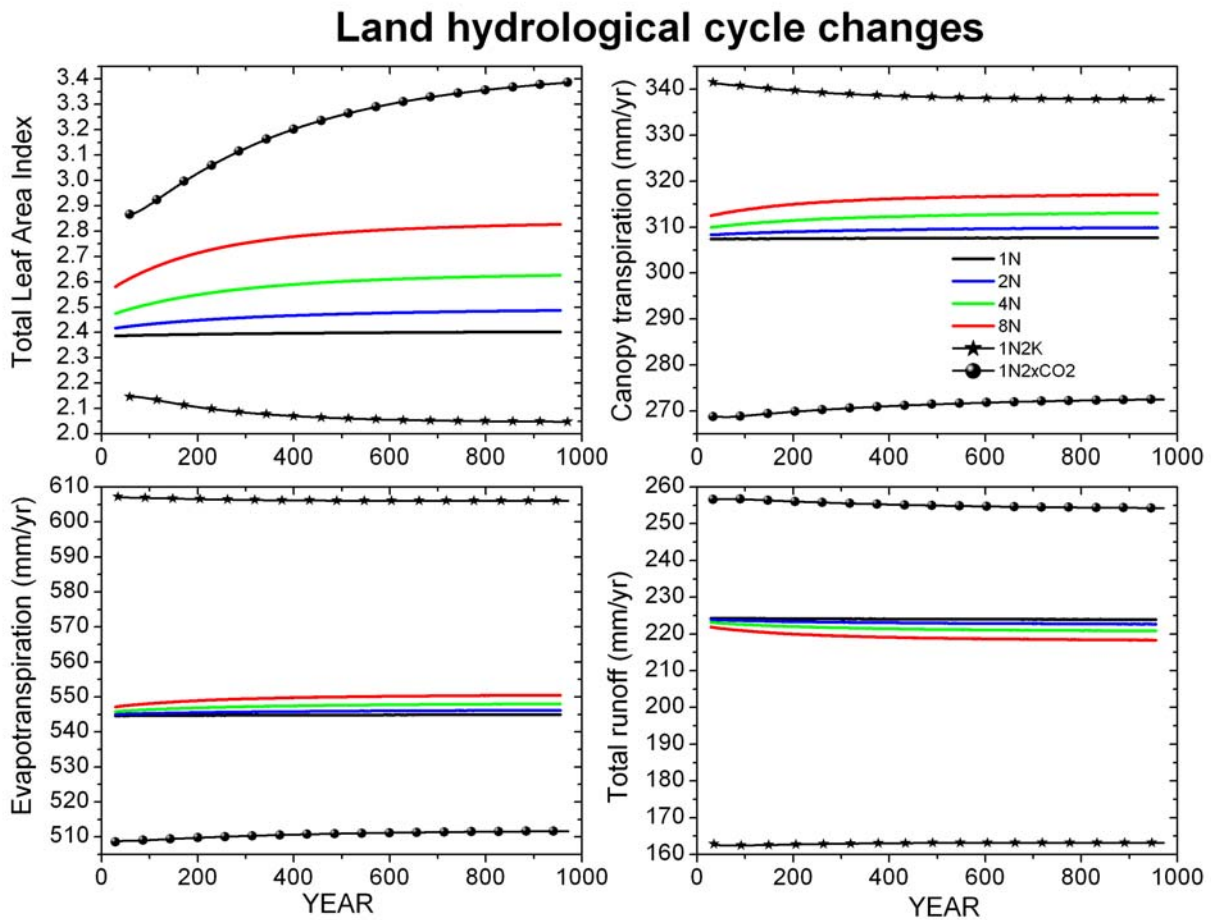
**Figure S2:** Terrestrial ecosystem carbon storage sensitivity to N deposition ( $\delta_L$ ) when N deposition is doubled from the pre-industrial (1850; left panel) and present day (2006; right panel) N deposition levels. Averages from last 100 years of 1000-year simulations are used for the calculation. These simulations show that the TEC sensitivity to N deposition at present day N deposition levels is slightly lower than the sensitivity at pre-industrial N deposition levels but the spatial distribution of sensitivity is similar.



**Figure S3:** Spatial distribution of total ecosystem carbon (TEC) changes between the simulation with 2K warming (1N2K) and 1N (top left panel) and the simulation with 2K warming and an associated 6% increase in precipitation and 13% change in specific humidity (1NPREC2K) and 1N (top right panel). The spatial pattern in the top two panels is similar indicating that the experiment 1N2K without the climate change related precipitation and water vapor changes is able to simulate the TEC changes associated with a 2K global mean warming very well. Bottom panel shows the percentage change in TEC between 1NPREC2K and 1N2K. It is seen that regional changes are at most only ~10-15%. Averages from last 100 years of 1000-year simulations are used for the calculation.



**Figure S4.** Simulated land-mean Leaf Area Index (LAI), canopy transpiration, evapotranspiration, total runoff (subsurface drainage + surface runoff) in 1N, 2N, 4N, 8N, 1N2K and 1N2xCO<sub>2</sub> experiments. Increased N deposition leads to increased LAI which in turn causes increased canopy transpiration and land surface evapotranspiration and consequently decreased total runoff. The magnitudes of these land surface hydrological changes are small even for large increases in N deposition: when N deposition is increased eight fold (8N - 1N), we find a 17% increase in LAI, 3.3% increase in transpiration, 1% increase in evapotranspiration and 2.7% decline in runoff. As illustrated in this figure, the hydrological changes from increased N deposition are much smaller than changes from CO<sub>2</sub>-direct effect (net effects of transpiration reduction from closing of stomata and increased transpiration due to CO<sub>2</sub>-fertilization induced LAI increase) (Bala *et al.*, 2012; Betts *et al.*, 1997; Betts *et al.*, 2007; Cao *et al.*, 2010; Gopalakrishnan *et al.*, 2011) or from climate warming (which triggers evaporative demand).



**Table S1:** Literature on the effects of N deposition on terrestrial productivity and carbon storage

<b>Reference</b>	<b>Geography</b>	<b>Species/ Ecosystem</b>	<b>N deposition</b>	<b>Increase in productivity</b>
<i>(Nilsson and Wiklund, 1992)</i>	Sweden, Skogaby experiment	Norway Spruce	100 Kg N/ha/Yr	31% increase in dry matter
<i>(Moller, 1992)</i>	Sweden	Spruce	150 Kg N/ha	10.1 m <sup>3</sup> /ha
<i>(Moller, 1992)</i>	sweden	Pine	150 Kg N/ha	13.5 m <sup>3</sup> /ha
<i>(Pettersson, 1994)</i>	Sweden	Forest ecosystem	140-150 Kg N/ha/yr	20-50% increase in growth
<i>(Lemus et al., 2008)</i>	US	Switch grass	56, 112, 224 Kg N/ha	An average of 3.6 tons/ha increase in biomass yield
<i>(Solberg et al., 2009)</i>	Europe wide -363 monitoring plots over 15 years	5 Species	1 Kg N/ha/yr	>1% increase in volume
<i>(de Vries, 2009)</i>	Europe wide - field and modelling study	Total Ecosystem carbon	1 Kg N	30-70 Kg C
<i>(de Vries et al., 2009)</i>	Europe wide	Forest- above ground biomass	1 Kg N/ha/yr	15-40 KgC/ha/yr
<i>(de Vries et al., 2009)</i>	Europe wide	Forest-soils	1 Kg N/ha/yr	5-35 KgC/ha/yr
<i>(Laubhann et al., 2009)</i>	Europe wide	Forests	1 Kg N/ha/yr	21-26 KgC/ha/yr
<i>(Jacobson and Pettersson, 2010)</i>	Sweden	Scots Pine and Norway Spruce	1 Kg N/ha/yr	17-35 Kg C/ha/Yr
<i>(Thomas et al., 2010)</i>	US	24 most common species	1 Kg N	61 Kg C of above ground biomass
<i>(Lu et al., 2012)</i>	China	Nationwide estimation	1 Kg N	0-21 Kg C

**Table S2:** Coefficients and time constants of exponential fits ( $\Delta\text{TEC} = A_0 - A_1 \text{Exp} [-t/\tau_1] - A_2 \text{Exp} [-t/\tau_2]$ ) with two time constants for changes in TEC in all experiments relative to 1N.  $A_0$  is an estimate of the steady-state change in C storage under each scenario. The fit is constrained to go through  $\Delta\text{TEC} = 0$  at  $t=0$ .

Relative to 1N	$A_0$ (PgC)	$A_1$ (PgC)	$A_2$ (PgC)	$\tau_1$ (years)	$\tau_2$ (years)	RMSE (PgC)
2N	72.6	11.9	60.7	64.0	340.3	0.2
4N	190.3	36.8	153.5	64.0	310.6	0.4
8N	360.5	93.0	267.5	65.2	283.1	0.9
1N2K	-306.8	-134.0	-172.8	35.3	254.8	4.0
2N2K	-247.9	-124.6	-123.3	34.7	216.9	4.2
4N2K	-153.5	-92.1	-61.4	31.8	97.9	4.7
8N2K	-3.2	-87.6	84.4	34.9	440.4	5.2
1N2xCO2	665.4	140.4	525.0	26.7	361.0	3.1
2N2xCO2	756.7	147.0	609.6	27.4	344.1	3.3
4N2xCO2	909.3	162.9	746.4	29.1	315.5	3.6
8N2xCO2	1138.5	204.0	934.4	33.4	276.9	4.4

**Table S3:** Testing the linearity of the effects due to climate warming, CO<sub>2</sub>-fertilization and N deposition in our model simulations. Global and annual mean terrestrial carbon (TEC) changes relative to control simulation for the last 100years of the 1000 year simulations are listed. Unit for TEC change is PgC in all columns.

N deposition levels	<b>Test of linearity for Warming and N deposition effects</b>				
	Warming effect (1N2K-1N) (a)	N deposition effect (xN-1N)* (b)	Combined effect (xN2K-1N)	Sum of the effects (a)+(b)	Interaction term†
2N	-303.4	69.0	-246.8	-234.4	-12.4
4N	-303.4	183.5	-152.0	-120.0	-32.0
8N	-303.4	352.0	-13.2	48.6	-61.8
	<b>Test of linearity for CO<sub>2</sub> fertilization and N deposition effects</b>				
	CO <sub>2</sub> -fertilization effect (1N2xCO2-1N) (a)	N deposition effect (xN-1N) (b)	Combined effect (xN2xCO2-1N)	Sum of the effects (a)+(b)	Interaction term
2N	627.7	68.9	718.5	696.6	19.9
4N	627.7	183.5	873.4	811.2	62.2
8N	627.7	352.0	1110.4	979.7	130.7

\*x takes on the value of 2, 4, 8 for 2N, 4N and 8N respectively.

† Interaction term is difference between combined effect and sum of effects.

## References

- Bala, G., S. Kirshna, N. Devaraju, L. Cao, K. Caldeira, and R. Nemani: An estimate of equilibrium sensitivity of global terrestrial carbon cycle using NCAR CCSM4, *Clim Dynam*, DOI 10.1007/s00382-012-1495-9, 2012.
- Betts, R. A., P. M. Cox, S. E. Lee, and F. I. Woodward: Contrasting physiological and structural vegetation feedbacks in climate change simulations, *Nature*, 387(6635), 796-799, 1997.
- Betts, R. A., et al.: Projected increase in continental runoff due to plant responses to increasing carbon dioxide, *Nature*, 448(7157), 1037-U1035, 2007.
- Cao, L., G. Bala, K. Caldeira, R. Nemani, and G. Ban-Weiss: Importance of carbon dioxide physiological forcing to future climate change, *Proceedings of the National Academy of Sciences of the United States of America*, 107(21), 9513-9518, 2010.
- de Vries, W.: Assessment of the relative importance of nitrogen deposition and climate change on the sequestration of carbon by forests in Europe: an overview Introduction, *Forest Ecology and Management*, 258(8), VII-X, 2009.
- de Vries, W., et al.: The impact of nitrogen deposition on carbon sequestration by European forests and heathlands, *Forest Ecology and Management*, 258(8), 1814-1823, 2009.
- Gopalakrishnan, R., G. Bala, M. Jayaraman, L. Cao, R. Nemani, and N. H. Ravindranath: Sensitivity of terrestrial water and energy budgets to CO<sub>2</sub>-physiological forcing: an investigation using an offline land model, *Environmental Research Letters*, 6(4), 2011.
- Jacobson, S., and F. Pettersson: An Assessment of Different Fertilization Regimes in Three Boreal Coniferous Stands, *Silva Fennica*, 44(5), 815-827, 2010.
- Laubhann, D., H. Sterba, G. J. Reinds, and W. De Vries: The impact of atmospheric deposition and climate on forest growth in European monitoring plots: An individual tree growth model, *Forest Ecology and Management*, 258(8), 1751-1761, 2009.
- Lemus, R., E. C. Brummer, C. L. Burras, K. J. Moore, M. F. Barker, and N. E. Molstad: Effects of nitrogen fertilization on biomass yield and quality in large fields of established switchgrass in southern Iowa, USA, *Biomass & Bioenergy*, 32(12), 1187-1194, 2008.
- Lu, C. Q., H. Q. Tian, M. L. Liu, W. Ren, X. F. Xu, G. S. Chen, and C. Zhang: Effect of nitrogen deposition on China's terrestrial carbon uptake in the context of multifactor environmental changes, *Ecological Applications*, 22(1), 53-75, 2012.
- Moller, G.: The Scandinavian Experience in Forest fertilization Research and Operations, in *Forest Fertilization - sustaining and improving nutrition and growth of western forests* edited by H. N. Chappell, G. F. Weetman and R. E. Miller, University of Washington, Seattle, 1992.
- Nilsson, L. O., and K. Wiklund: INFLUENCE OF NUTRIENT AND WATER-STRESS ON NORWAY SPRUCE PRODUCTION IN SOUTH SWEDEN - THE ROLE OF AIR-POLLUTANTS, *Plant and Soil*, 147(2), 251-265, 1992.
- Pettersson, F.: Predictive functions for impact of nitrogen fertilization on growth over five years. Report No. 3Rep., The Forestry Research Institute of Sweden,, Uppasala, 1994.
- Solberg, S., M. Dobbertin, G. J. Reinds, H. Lange, K. Andreassen, P. G. Fernandez, A. Hildingsson, and W. de Vries: Analyses of the impact of changes in atmospheric deposition and climate on forest growth in European monitoring plots: A stand growth approach, *Forest Ecology and Management*, 258(8), 1735-1750, 2009.
- Thomas, R. Q., C. D. Canham, K. C. Weathers, and C. L. Goodale: Increased tree carbon storage in response to nitrogen deposition in the US, *Nature Geoscience*, 3(1), 13-17, 2010.