

Interactive comment on “Dissolved Fe across the Weddell Sea and Drake Passage: impact of DFe on nutrients uptake in the Weddell Sea” by M. B. Klunder et al.

M. B. Klunder et al.

maartenklunder@hotmail.com

Received and published: 13 October 2013

Dear Referee's, Editor, Public,

Please find included my response to the comments on the manuscript, the revised manuscript and two new Annexes (combined in .zip file). Moreover, please find several of the figures in improved version.

Best regards,

Maarten Klunder (on behalf of all authors).

C5832

Please also note the supplement to this comment:

<http://www.biogeosciences-discuss.net/10/C5832/2013/bgd-10-C5832-2013-supplement.zip>

Interactive comment on Biogeosciences Discuss., 10, 7433, 2013.

C5833

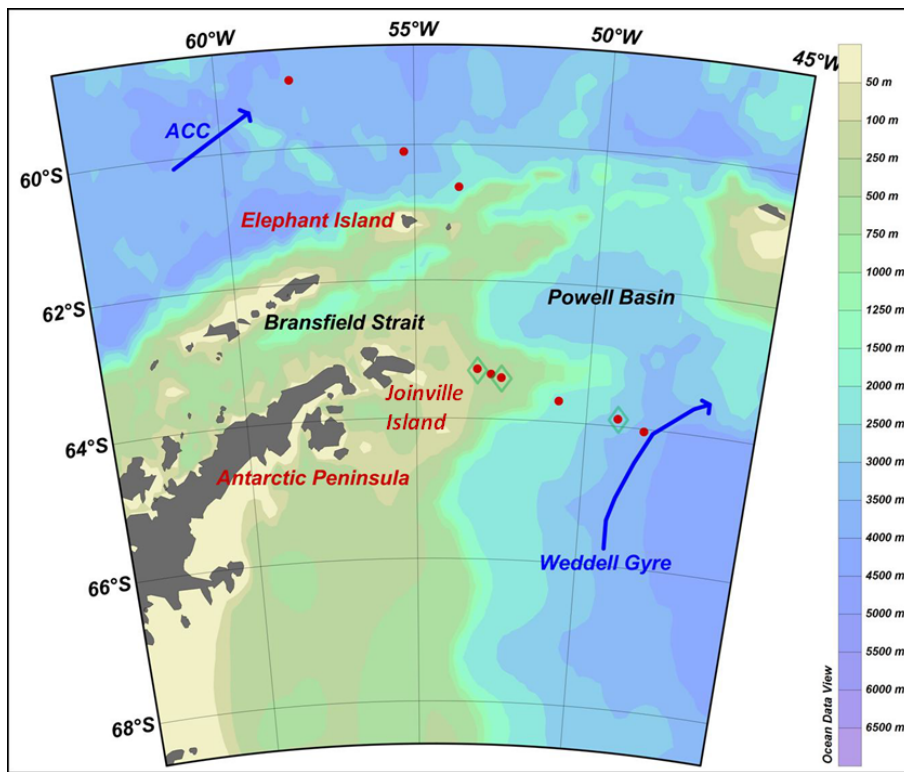


Fig. 1.

C5834

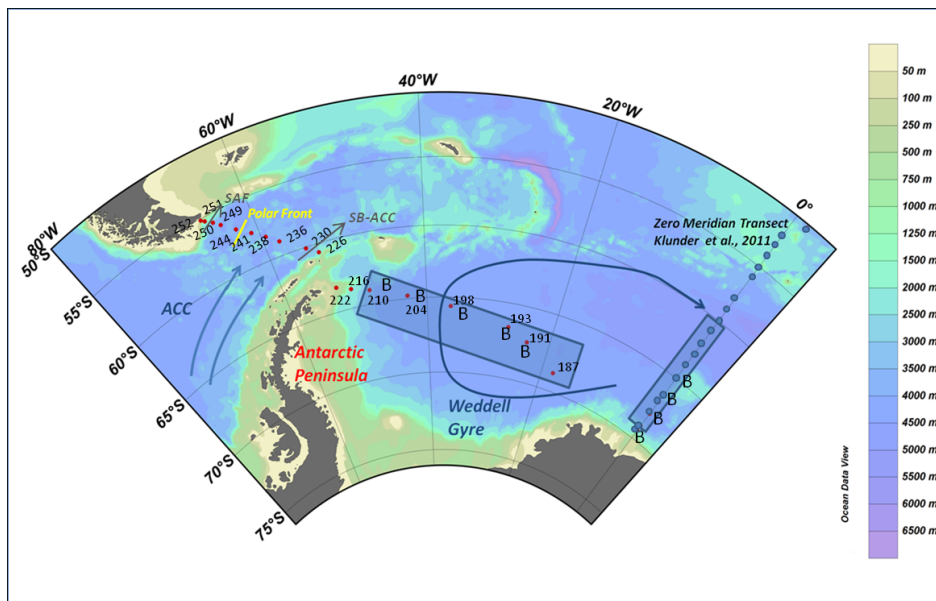


Fig. 2.

C5835

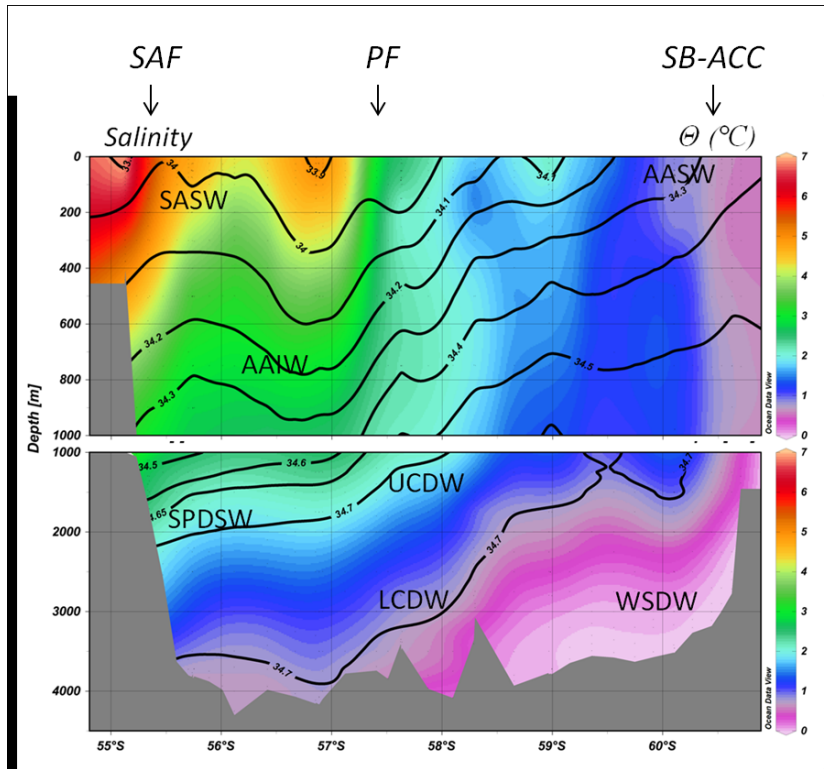


Fig. 3.

C5836

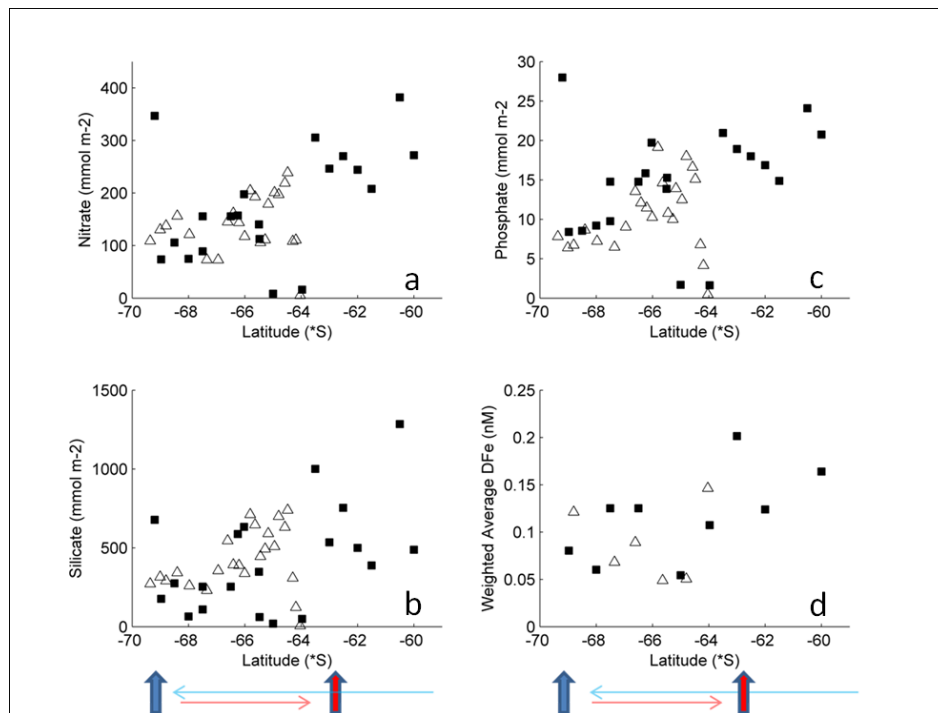


Fig. 4.

C5837

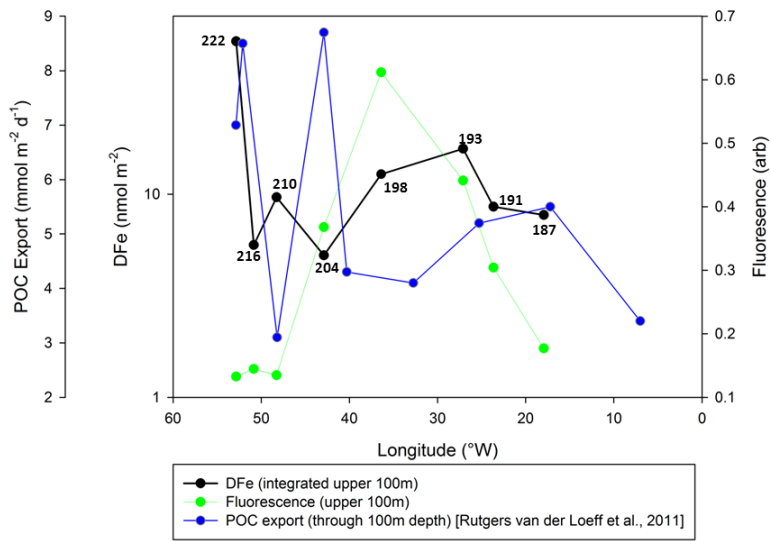


Fig. 5.

C5838

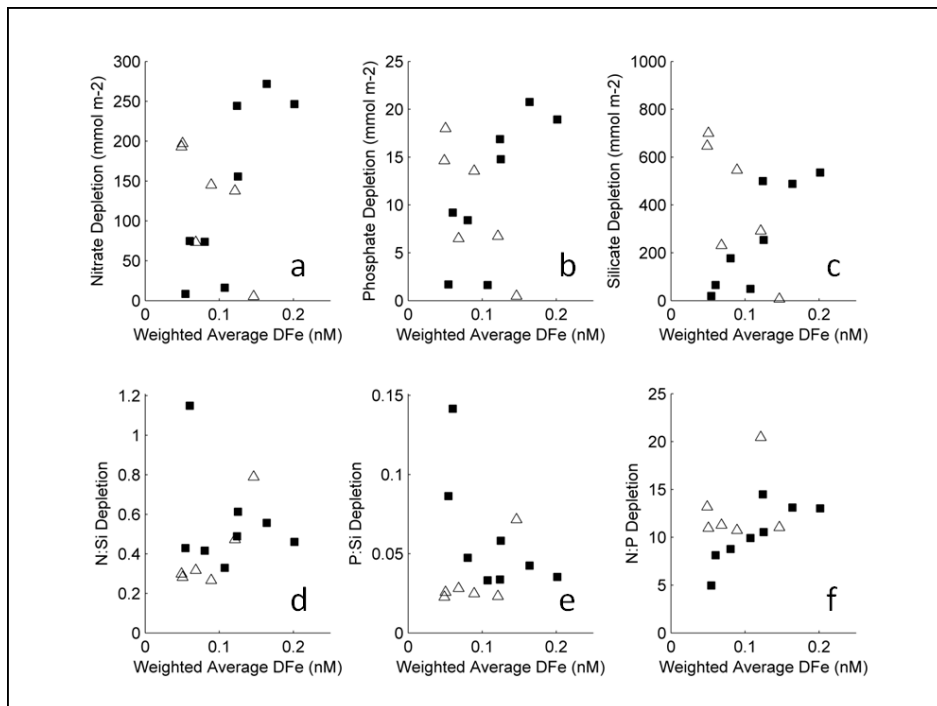


Fig. 6.

C5839

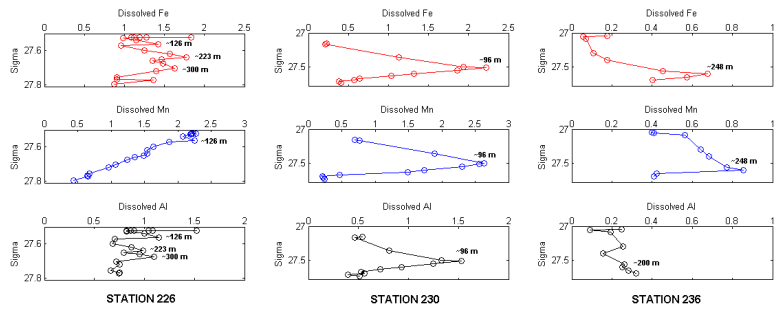


Fig. 7.

C5840