

## ***Interactive comment on “High greenhouse gas fluxes from grassland on histic gleysol along soil carbon and drainage gradients” by K. Leiber-Sauheiti et al.***

**K. Leiber-Sauheiti et al.**

katharina.leiber@ti.bund.de

Received and published: 5 December 2013

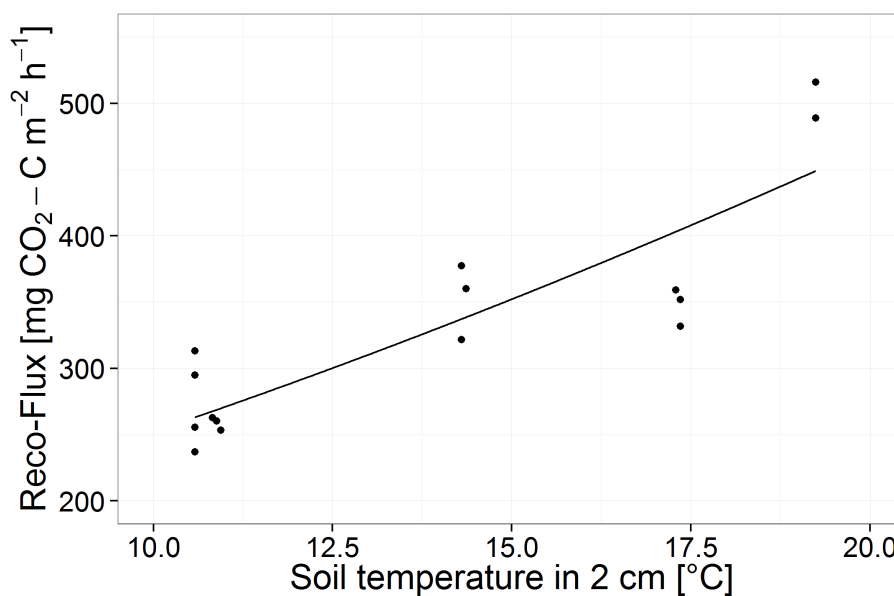
The comment was uploaded in the form of a supplement.

Please also note the supplement to this comment:

<http://www.biogeosciences-discuss.net/10/C7201/2013/bgd-10-C7201-2013-supplement.pdf>

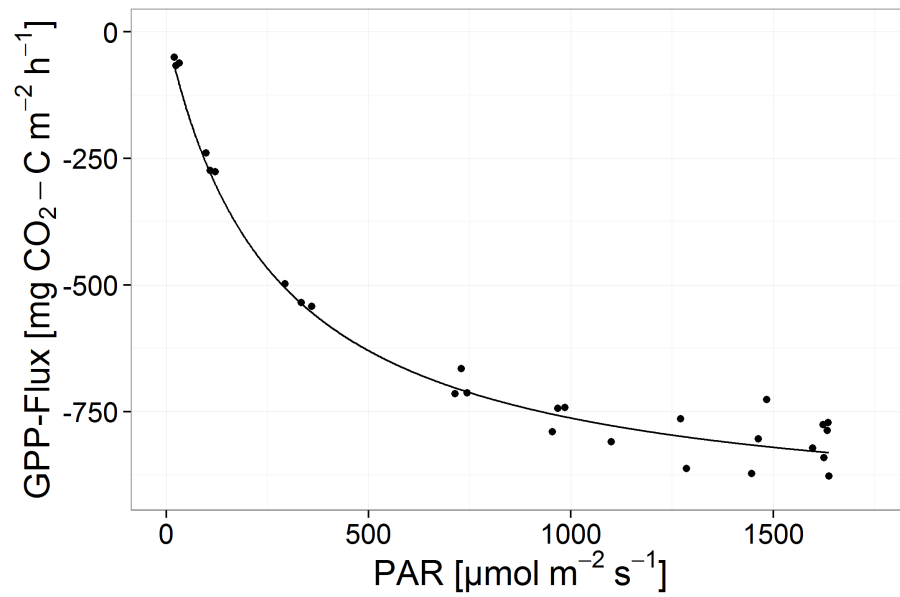
Interactive comment on Biogeosciences Discuss., 10, 11283, 2013.

C7201



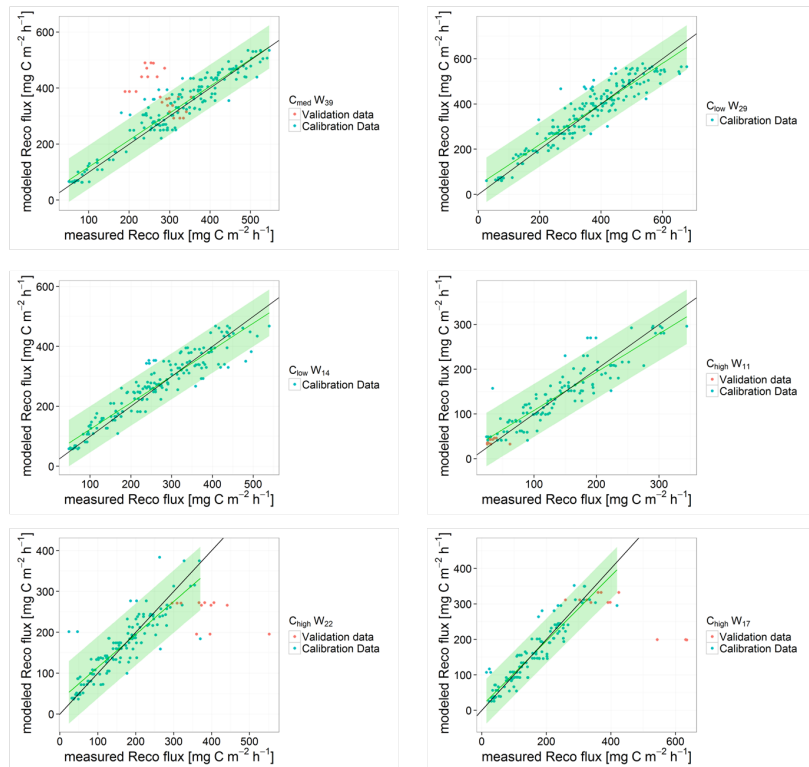
**Fig. 1.** FigS3A: Reco flux model of an exemplary measurement campaign (02 May 2012) showing measured data as dots and fits as lines.

C7202



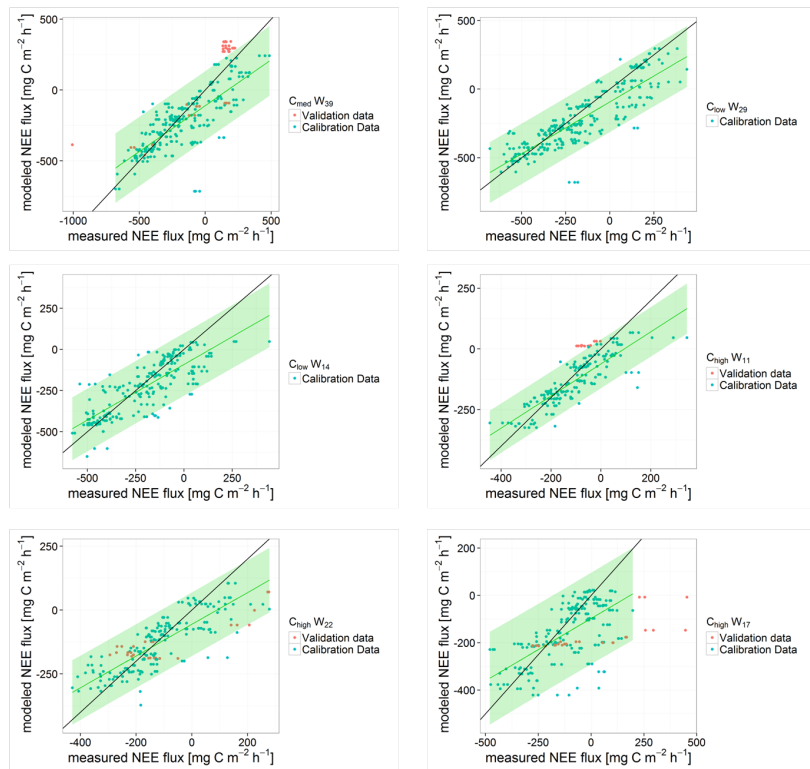
**Fig. 2.** FigS3B: GPP flux model of an exemplary measurement campaign (02 May 2012) showing measured data as dots and fits as lines.

C7203



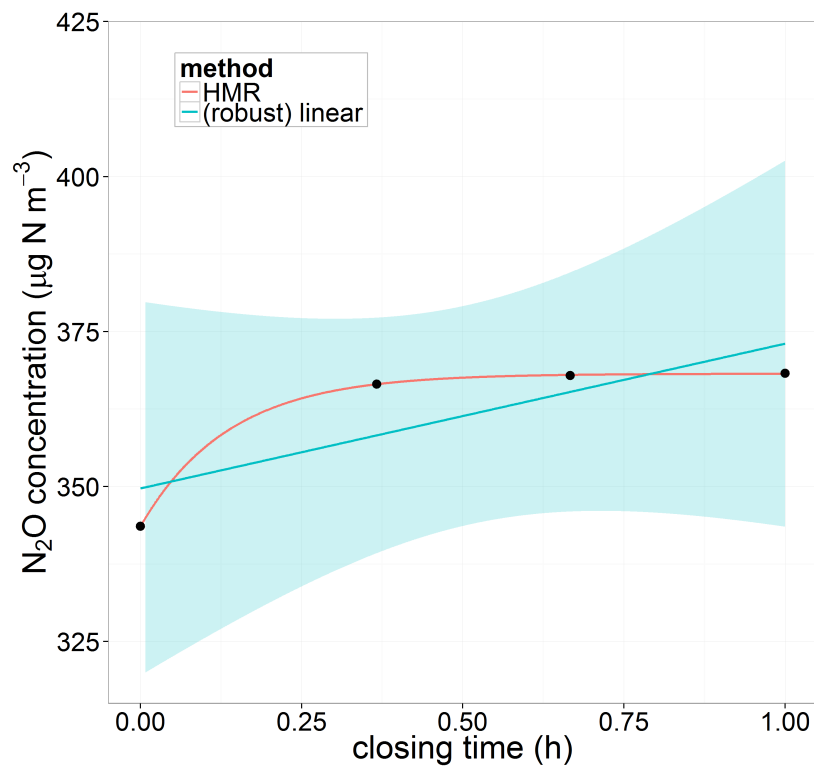
**Fig. 3.** FigS4A: Plots of measured Reco fluxes vs. modeled Reco fluxes of all measurement campaigns separated by site (1 June 2011 to 1 June 2012). Black line: 1:1 line, green line: fitted line.

C7204



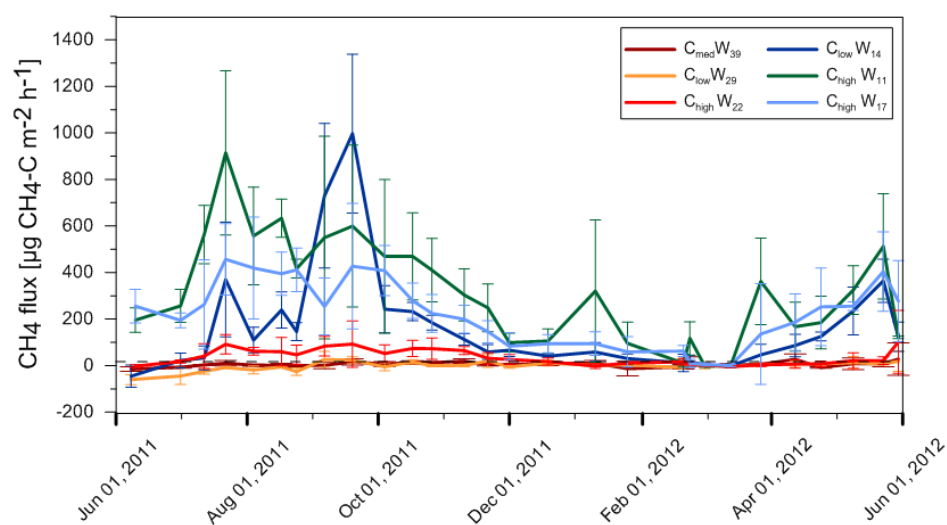
**Fig. 4.** FigS4B: Plots of measured NEE fluxes vs. modeled NEE fluxes of all measurement campaigns separated by site (1 June 2011 to 1 June 2012). Black line: 1:1 line, green line: fitted line.

C7205



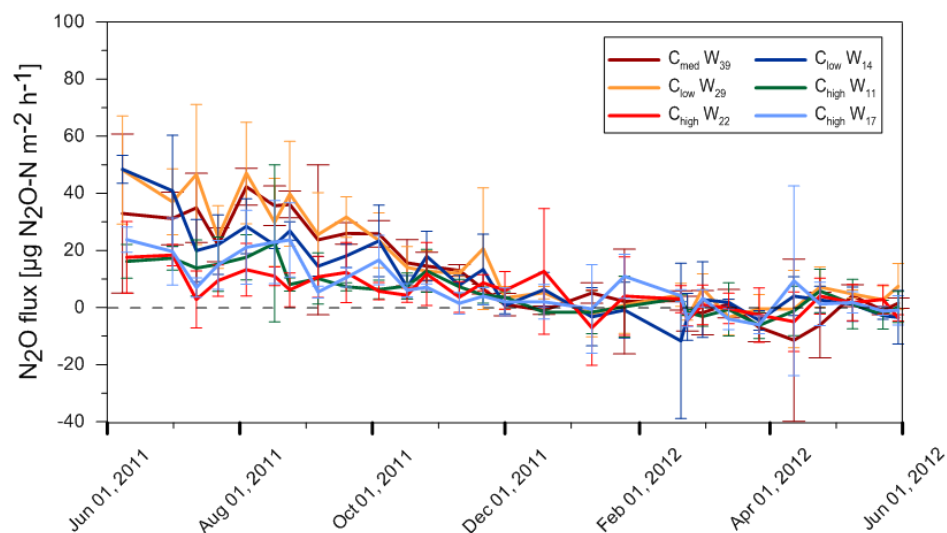
**Fig. 5.** FigS5: : Example of a flux measurement where the non-linear fit severely overestimates the flux.

C7206



**Fig. 6.** FigS6A: Annual time series of CH<sub>4</sub> fluxes at each site (June 1, 2011 - June 1, 2012). Error bars represent the heterogeneity between the three replicates

C7207



**Fig. 7.** FigS6B: Annual time series of N<sub>2</sub>O fluxes at each site (June 1, 2011 - June 1, 2012). Error bars represent the heterogeneity between the three replicates

C7208