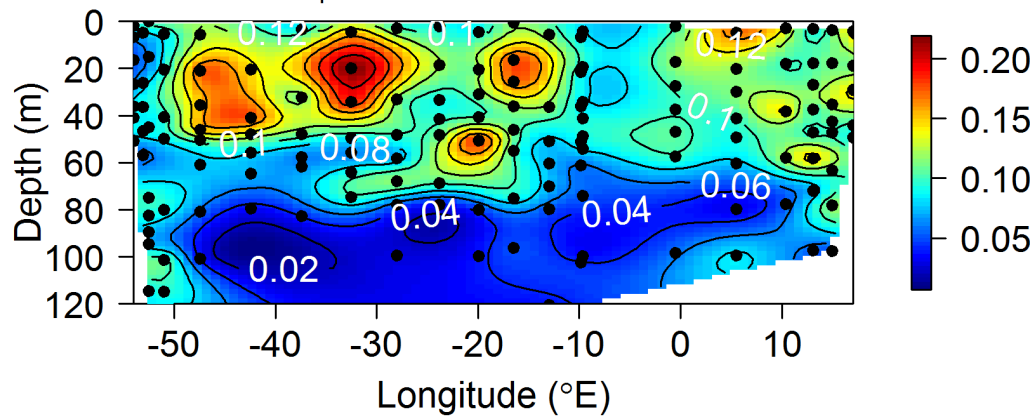
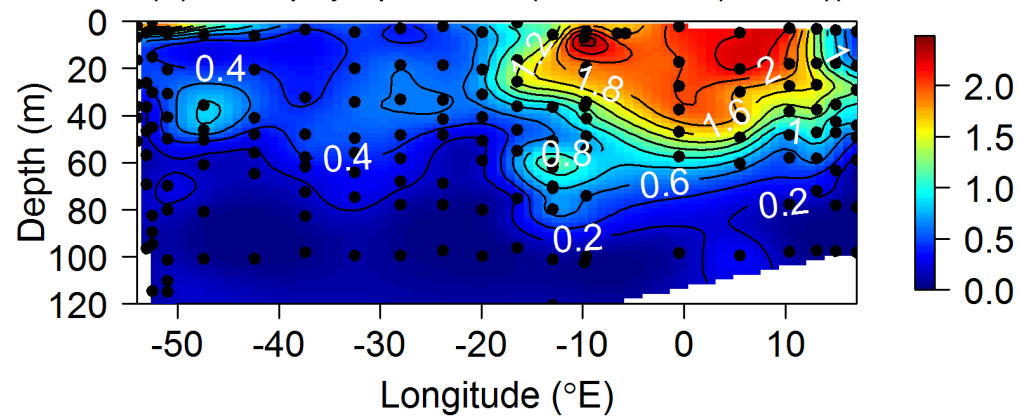


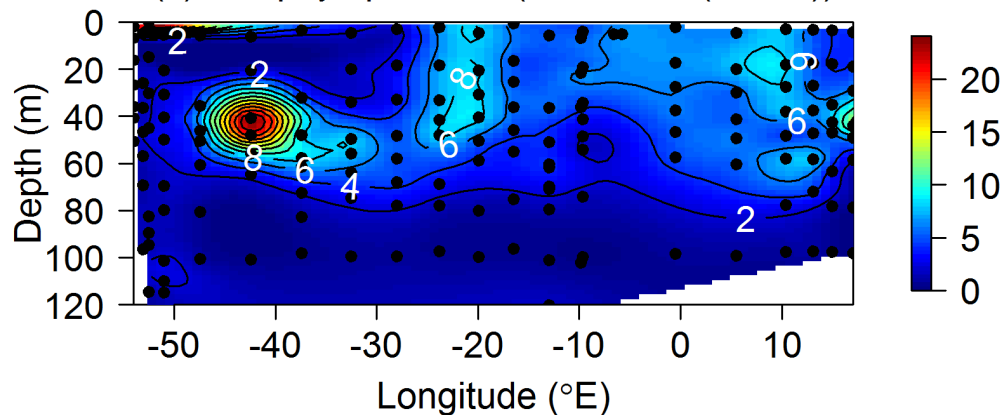
(a) a_{ph}^* (440) ($m^2 (mg \text{ Chl-a})^{-1}$)



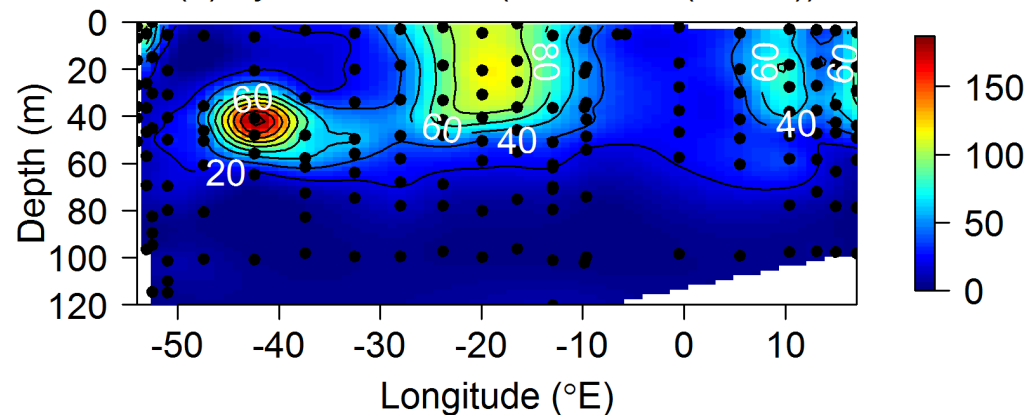
(b) Nanophytoplankton ($cells \text{ mL}^{-1} (x1000)$)



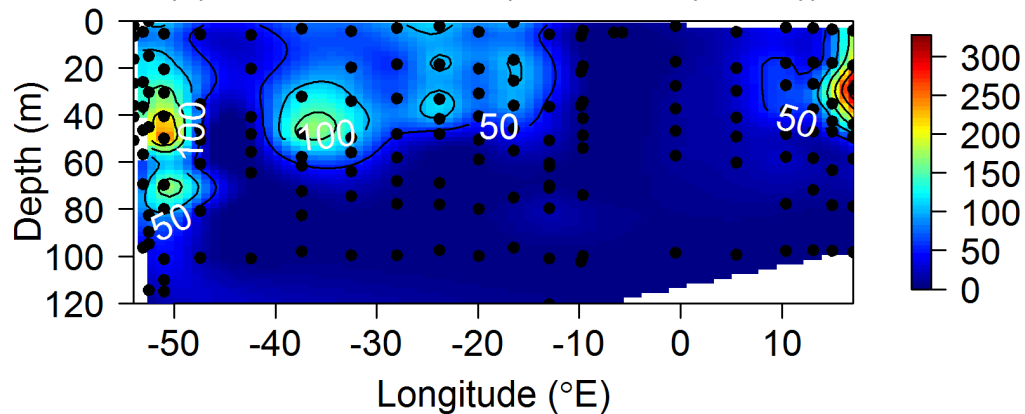
(c) Picophytoplankton ($cells \text{ mL}^{-1} (x1000)$)



(d) *Synechococcus* ($cells \text{ mL}^{-1} (x1000)$)



(e) *Prochlorococcus* ($cells \text{ mL}^{-1} (x1000)$)



(f) Total Bacteria ($cells \text{ mL}^{-1} (x1000)$)

