

Dear Editor Williams,

Thank you for reviewing our revised manuscript. Here are our responses to your recent comments. We include a latexdiff documenting the changes in the MS as supplementary material in the online system (note that latexdiff gets confused in Section 3.5, this section is perhaps easier checked manually). We demarcate our response with >>:

I agree with author 1 that the abstract could be improved. Please revise this text in line with the reviewer's recommendations.

>> We have modified the last sentence of the abstract to elaborate on the soil matric potential parameterization for heterotrophic respiration as follows:

"Our results indicate that representing the effect of soil moisture on heterotrophic respiration in terms of soil matric potential and constraining heterotrophic respiration when absolute soil matric potential is both low (wetter soils) and high (drier soils), with optimum conditions in between, allows to correctly simulate NEP seasonality." <<

2.3. I agree with the reviewer 2 that the term 'seasonal drought' is not appropriate. Please use 'dry season' instead. Please also clarify the timing of dry season at both sites to support your assertion of similar expected NEP dynamics (using figure 2).

>> We have changed 'seasonal drought' to 'dry season'. We have also added in additional clarification of the timing of the dry season initiation at both sites (In the MS, we already define the dry season as consisting of months with precipitation <100 mm/month). <<

2.4. Change "Since" to "Because".

Please make clear here your use and comparison of the two Rhet schemes in the simulations.

>> We have made these changes. <<

Section 3. This would benefit from improved use of topic sentences to open each sub-section and paragraph. E.g. sections 3.1, 3.2, 3.3, 3.4 and 3.5 all have weak opening sentences. Please improve these to make your key point right at the start.

>> All three of our reviewers have explicitly mentioned the paper is well written. We are unsure what is meant by "making key point right at the start". Section 3 is the results section and in each sub-section (3.1, 3.2, 3.3, 3.4 and 3.5) we first introduce the reader to the figure which shows the specific results, we then discuss the figure and finally we make concluding statement(s). It seems we are being suggested to make the main concluding point before discussing the figures in each sub-section. Such a modification, in our humble opinion, will make the main concluding point at the beginning of each section difficult to follow since at this point the reader would not have seen the figures. We have, however, reworded the opening sentences of some of these sub-sections. <<

3.2 Break this section into two – one on C fluxes, another on Energy fluxes – to improve structuring.

>> We have made this change. <<

3.4 I understand the concerns of the reviewer 1 about soil moisture offset between model and observations. The main message of the paper is that soil moisture controls on processes must be included in effective models. So any bias in a key variable must be a concern. I understand that observations and models must be carefully compared, but soil moisture is a relatively straightforward variable. As I said in my response to your initial submission “The mismatch between model and data in fig 7d looks significant to me, and needs careful discussion.” Please revise your text accordingly and add a section on this to the discussion.

>> We are not sure of Editor’s familiarity with land surface schemes (LSSs) but we politely disagree that “soil moisture is a relatively straightforward variable”. Soil moisture is in fact one of the most difficult land surface state variables to simulate. This has been illustrated in the earlier Project for Intercomparison of Land Surface Schemes (PILPS) that was initiated in the 1990s and within the framework of Global Soil Wetness Project (GSWP, Dirmeyer (2011), *J. Hydrometeorol.*, 12, 729–749). As the latter summarizes based on earlier studies, “there are large differences in the mean soil moisture, or preferred ‘operating range’ of soil moisture among models across all locations . . . , but when comparing only anomalies, models behaved much more similarly.” In the context of this study it is the seasonality of soil moisture and the timing of onset of wet and dry states that is more important. Note that the bias in mean soil moisture state can easily be adjusted by tuning the base respiration rates. However, if the seasonality of simulated soil moisture is incorrect it is fairly difficult to simulate the right seasonality for land-atmosphere carbon and energy fluxes. We have further revised the last few sentences of Section 3.4 to make this argument. <<

4. Please add headings to this section to improve the structure and readability. I asked for this structure after your initial submission, so please take this seriously now.

>> As all three of our reviewers have explicitly mentioned the paper is well written, we believed our present structure was sufficient. We have now added these headings. <<

A key issue relates to upscaling. Knowledge of the soil types and their parameterisation across the Amazon is sparse. Please discuss this scaling challenge for modelling. Also please discuss the various alternative matric models, and how they might affect your results. See for instance:

Fisher, RA, M Williams, M de Lourdes Ruivo, A L da Costa & P Meir (2008) Evaluating climatic and edaphic controls on dry season gas exchange at two Amazonian rain forest sites. *Agricultural and Forest Meteorology* 148: 850-861.

In a survey we made of soils around Tapajos we found very significant shifts in soil texture occurring frequently and over short distances. How can a model cope with this challenge?

Williams, M., Y.E. Shimabukuro, D.A. Herbert, S. Pardi Lacruz, C. Renno and E.B. Rastetter (2002) Heterogeneity of soils and vegetation in eastern Amazonian rain forest; implications for scaling up biomass and production. *Ecosystems*, 5: 692-704.

>> It is fairly well known that soils are extremely heterogeneous. While there are global data sets of soil texture and depth they only describe the broad geographical distribution of soils and characterizing heterogeneity of soils at local and regional spatial scales remains a challenge. Related to this is the fact that, if geophysical fields required to run a model are incorrect, so will be the model output. This limitation applies to all models and all locations. No model can cope with the challenge of incorrect input. In addition, the more sensitive the model is to an input geophysical field, the more caution must be taken in specifying that input correctly. We are unsure how else to address your comment other than explicitly noting in the revised manuscript that given the sensitivity to soil texture and depth it is important to specify these geophysical fields as realistically as possible.

The question about the influence of different matric potential formulations was asked previously by the Editor. We include below the previous question and our response (which starts with '=='):

"Fourth - getting matric potentials right for tropical soils is very difficult, as I know from personal experience the data are extremely sparse (see Fisher, RA, M Williams, M de Lourdes Ruivo, A L da Costa & P Meir (2008) Evaluating climatic and edaphic controls on dry season gas exchange at two Amazonian rain forest sites. *Agricultural and Forest Meteorology* 148: 850-861.). We used the van genuchten relationship, which fitted our data best. Please discuss how the calibration of your eqn 7 affects your results

== As already mentioned in manuscript, at several places, none of the model parameters are calibrated at the sites chosen. If we were to perform tuning it may improve our model performance for the two LBA sites we investigate here, but it is not a practical approach for application within an earth system modeling framework.

In regards to the Van Genuchten relationship, as mentioned on page 15 of Chapter 4 of Rainfall Runoff processes (<http://agris.faoswalim.org/resources/NEW Docs/RainfallRunoffProcesses.pdf>), there are no fundamental differences between the three functional forms proposed by Brooks and Corey (1966), Van Genuchten (1980) and Clapp and Hornberger (1978) that describe the highly non-linear relationship between soil moisture and soil matric potential as a function of soil texture. They are simply convenient mathematical expressions that approximately fit the empirical shape of soil characteristic functions. In the context of our manuscript, the effect of using soil matric potential instead of soil moisture in constraining heterotrophic respiration is much bigger than the effect of using a different functional form to describe the soil moisture versus soil matric potential relationship. Nevertheless, we have included a sentence in Section 2.2 stating that, in principle, any of the functional relationships can be used for equation (7). "

<<

Fig. 3. Please make clear which of the Rhet models was used in the simulations (i.e. I think you used the standard scheme here).

>> Done. <<

Manuscript prepared for Biogeosciences Discuss.
with version 2014/07/29 7.12 Copernicus papers of the \LaTeX class copernicus.cls.
Date: 5 January 2015

The influence of soils on heterotrophic respiration exerts a strong control on net ecosystem productivity in seasonally dry Amazonian forests

J. R. Melton, R. K. Shrestha, and V. K. Arora

Canadian Centre for Climate Modelling and Analysis, Environment Canada, Victoria, BC,
V8W 2Y2, Canada

Correspondence to: J. R. Melton (joe.melton.sci@gmail.com)

Abstract

Net ecosystem productivity of carbon (NEP) in seasonally dry forests of the Amazon varies greatly between sites with similar precipitation patterns. Correctly modeling the NEP seasonality with terrestrial ecosystem models has proven difficult. Previous modelling studies have mostly advocated incorporating processes that act to reduce water stress on gross primary productivity (GPP) during the dry season such as including deep soils and roots, plant-mediated hydraulic redistribution of soil moisture, and increased dry season leaf litter generation which reduces leaf age and thus increases photosynthetic capacity. Recent observations, however, indicate that seasonality in heterotrophic respiration also contributes to the observed seasonal cycle of NEP. Here, we use the dynamic vegetation model CLASS-CTEM – without deep soils or roots, hydraulic redistribution of soil moisture or increased dry season litter generation – at two Large-Scale Biosphere–Atmosphere Experiment (LBA) sites (Tapajós km 83 and Jarú Reserve). These LBA sites exhibit opposite seasonal NEP cycles despite reasonably similar meteorological conditions. Our simulations are able to reproduce the observed NEP seasonality at both sites. Simulated GPP, heterotrophic respiration, latent and sensible heat fluxes, litter fall rate, soil moisture and temperature, and basic vegetation state are also compared with available observation-based estimates which provide confidence that the model overall behaves realistically at the two sites. Our results indicate that ~~appropriately representing the influence of soil texture and depth, through soil moisture, on seasonal patterns of GPP and, especially, heterotrophic respiration is important to correctly simulating~~ representing the effect of soil moisture on heterotrophic respiration in terms of soil matric potential and constraining heterotrophic respiration when absolute soil matric potential is both low (wetter soils) and high (drier soils), with optimum conditions in between, allows to correctly simulate NEP seasonality.

1 Introduction

The Amazonian region is a major component of the global terrestrial carbon cycle. Amazon old-growth forests contain about 120 Pg C in their woody biomass (Malhi et al., 2006). The annually varying uptake and release of carbon in the region acts a powerful lever on the global carbon cycle (Bousquet et al., 2000). There has been significant interest in the region's susceptibility to release large amounts of carbon in response to recent droughts and future climate change – primarily the possibility of persistent drought (Malhi et al., 2009b; Cox et al., 2013; Fu et al., 2013; Gatti et al., 2014; Zeri et al., 2014). While northwestern Amazonia experiences high rainfall year-round, areas of the central eastern and southern edge have ~~periods of seasonal drought~~ a dry season lasting up to five months (Sombroek, 2001). These seasonally dry locations are suggested to be models for the future of the Amazon's predominant wet forests (Saleska et al., 2003).

The Large-Scale Biosphere–Atmosphere Experiment (LBA) in Amazonia installed flux towers at several sites within these seasonally dry regions. Their eddy covariance measurements, which are used to estimate the net ecosystem productivity (NEP) of carbon, and energy fluxes, between the land surface and the atmosphere, have served to test and improve our understanding of tropical terrestrial ecosystem processes.

Several terrestrial ecosystem models have been evaluated against observations of NEP from LBA sites including CLM (Lee et al., 2005), SiB3 (Baker et al., 2008), LPJml (Poulter et al., 2009), ISAM (El-Masri et al., 2013), along with 17 others in a model-intercomparison project (de Gonçalves et al., 2013, von Randow et al., 2013), amongst others. Replicating the seasonality of NEP observations at these sites has, however, proven challenging. For example, Saleska et al. (2003) compared NEP estimates for the LBA Tapajós National Forest sites with simulated values from the TEM and IBIS models. The observation-based data showed carbon gain by the land surface in the dry season and loss in the wet; the opposite of which was simulated by the models. Accurately simulating the amplitude and timing of the NEP seasonal cycle at similar field sites continues to be challenging (e.g. Baker et al., 2008, 2013, von Randow et al., 2013). Attempts have been made to correct

the unrealistic simulated NEP seasonal cycle by representing processes deemed important to capture the regional carbon dynamics including: (i) deep roots to allow access to deep soil water reserves (Baker et al., 2008, 2013; Poulter et al., 2009), (ii) hydraulic redistribution (HR) of soil moisture via plant roots (Lee et al., 2005), (iii) deeper soil profiles (Baker et al., 2013), and (iv) adjusting the response of heterotrophic respiration to soil moisture (Baker et al., 2008). The inclusion of these processes is, of course, not based on a modeler's fancy but field observations and measurements such as those of Nepstad et al. (1994) (deep roots), Oliveira et al. (2005) (HR), and Bruno et al. (2006) (soil moisture in a deep soil column).

More recent studies attempt to include yet another physical process in their modelling framework that imposes a decrease in leaf age during the dry season in tropical forests. In models with this parameterization, decreasing leaf age increases photosynthetic capacity and thus primary productivity during the dry season. Kim et al. (2012), who use the ED2 model, increase leaf litter generation during the dry season by parameterizing leaf litter as a function of incoming solar radiation. The basis of this is that the dry season in seasonally dry tropical forests experiences more radiation due to lower cloud cover. For the ORCHIDEE model, De Weirdt et al. (2012) parameterize increased litter generation by continually generating leaf litter when leaf area index (LAI) reaches six. The daily leaf litter amount equals the amount of carbon allocated to leaves, so that the LAI stays at six but the leaf age decreases. Both these parameterizations attempt to generate peak leaf litter production during the early dry season in line with observations (Goulden et al., 2004).

Thus previous modeling studies of seasonally dry forests have placed a greater emphasis on increasing primary productivity during the dry season either through the influence of soil moisture, or through decreasing leaf age. Relatively less emphasis has been placed on the response of heterotrophic respiration which is equally important in determining NEP seasonality.

Recent observation-based estimates from Rowland et al. (2014) at a site in French Guiana indicate that heterotrophic respiration reduces during the dry season in these seasonally dry Amazonian tropical forests. Rowland et al. (2014) attempt to model the seasonal

cycle of gross primary productivity (GPP) and heterotrophic respiration by calibrating their model's parameters separately for the dry and wet seasons at their site. Their calibrated heterotrophic respiration parameters for the litter, coarse woody debris and soil organic matter pools of their model were about 35 % lower during the dry compared to the wet season.

5 Here we test the hypothesis that the seasonality in heterotrophic respiration exerts a strong control on the seasonality of NEP in seasonally dry tropical forests. We aim to evaluate the CLASS-CTEM dynamic vegetation model which does not include deep roots, root-mediated hydraulic redistribution of soil moisture, particularly deep soils or representation of decreased leaf age during the dry season. We assess if appropriately representing
10 the influence of soil texture and depth – through soil moisture – on seasonal patterns of GPP and, more importantly, on heterotrophic respiration yields realistic simulated NEP seasonality at two LBA sites which experience relatively similar climatic conditions yet exhibit opposite NEP seasonality.

We use the CLASS-CTEM dynamic vegetation model which is briefly described in
15 Sect. 2. The response of heterotrophic respiration to soil moisture in this model is based on a parameterization that uses soil matric potential and which assumes that heterotrophic respiration is constrained when soil is both dry and wet, with optimum values in between. We do not calibrate the parameters of the model used, nor do the parameters values depend on the season. We also test an alternative parameterization in which the response
20 of heterotrophic respiration to soil moisture is modelled using a simple linear relationship (similar to Rohr et al., 2013) that progressively constrains heterotrophic respiration as soil moisture reduces from field capacity to wilting point. Both parameterizations are described in Sect. 2. Results are provided in Sect. 3 which show reasonable comparison of simulated GPP, latent and sensible heat fluxes, litter fall rate and soil moisture and temperature with
25 available observation-based estimates and suggest that the model overall behaves realistically at the two chosen sites. The simple parameterization for modelling the response of heterotrophic respiration to soil moisture is, however, unable to realistically model the observed NEP seasonality. The results provide insight as to which features of our standard parameterization, that models the heterotrophic respiration response to soil moisture,

contribute to improved simulated seasonality of NEP. Finally conclusions are provided in Sect. 4. Our results reinforce the importance of accurate site-specific soil information and support our hypothesis that the response of heterotrophic respiration to seasonal reduction in soil moisture exerts a strong control on the seasonality of carbon fluxes between the atmosphere and land surface in seasonally dry tropical forests.

2 Methods

2.1 The CLASS-CTEM model

The CLASS-CTEM model used here is formed by coupling the Canadian Land Surface Scheme (CLASS v. 3.6) (Verseghy, 2012) and the Canadian Terrestrial Ecosystem Model (CTEM v. 1.2) (Melton and Arora, 2014). Earlier versions of these models are currently incorporated into the Canadian Centre for Climate Modelling and Analysis Earth System Model (CanESM2) (Arora et al., 2011). When coupled together both models simulate fluxes of energy, water and CO₂ at the land–atmosphere boundary. In the simulations presented here, CLASS-CTEM is driven with observation-based meteorological forcing including: precipitation, specific humidity, air pressure, wind speed, air temperature, and downwelling longwave and shortwave radiation.

CLASS calculates the energy and water balance of the vegetation canopy, soil, and snow components on a 30 min time step. It simulates the temperature and liquid and frozen moisture contents for up to three soil layers that are 0.10 m, 0.25 m, and up to 3.75 m deep. The maximum soil depth is thus 4.1 m. Energy and water balance calculations are performed for up to four plant functional types (PFTs) (needleleaf trees, broadleaf trees, crops, and grasses) using prescribed structural attributes for each PFT (including rooting depth, plant height which determines the surface roughness length, canopy mass, and leaf area index (LAI)). When coupled to CTEM, as done in this study, these variables are dynamically simulated by CTEM and passed to CLASS.

CTEM simulates terrestrial ecosystem processes for nine PFTs that are directly related to the four CLASS PFTs. Needleleaf trees are separated into evergreen and deciduous; broadleaf trees into evergreen, cold deciduous, and drought/dry deciduous; and crops and grasses are separated into C_3 and C_4 . Photosynthesis and canopy conductance in CTEM are simulated at the same time step as CLASS (i.e., 30 min). Other terrestrial ecosystem processes are simulated at a daily time step including: autotrophic and heterotrophic respiration (Arora, 2003); allocation; phenology and turnover (Arora and Boer, 2005); and conversion of biomass to structural attributes (including dynamic roots (Arora and Boer, 2003)). The model consists of three living vegetation components (leaves, stem and root) and two dead carbon pools (litter and soil organic matter).

The NEP of carbon, also termed the net ecosystem exchange (NEE), in CTEM is modeled as the difference of GPP and the autotrophic (R_a) and heterotrophic (R_h) respiratory fluxes as

$$\text{NEP} = (\text{GPP} - R_a) - R_h \quad (1)$$

$$\text{NEP} = \text{NPP} - R_h \quad (2)$$

where NPP is net primary productivity, obtained by subtracting R_a from GPP. Positive values of NEP indicate that land gains carbon from the atmosphere. Autotrophic respiration is calculated as the sum of growth and maintenance respiration for the plant tissues.

2.2 Heterotrophic respiration and its response to soil moisture

Heterotrophic respiration in CLASS-CTEM is modelled following Arora (2003) with some minor differences. Heterotrophic respiration (R_h) is the sum of respiration from the model's litter (R_{hL}) and soil carbon pools (R_{hS}):

$$R_h = R_{hL} + R_{hS} \quad (3)$$

Respiration in these pools is influenced by the amount of carbon (C_L and C_S ; kg C m^{-2}) and a specified PFT-dependent respiration rate at 15°C (ζ_L and ζ_S ; $\text{kg C (kg C)}^{-1} \text{ day}^{-1}$) that is

modulated by a temperature-dependent Q_{10} function, $f(Q_{10})$, and a soil matric potential dependence, $(f(\psi))$, that models the effect of soil moisture, as:

$$R_{HL} = \varsigma_L C_L f(Q_{10L}) f_L(\psi) \quad (4)$$

$$R_{HS} = \varsigma_S C_S f(Q_{10S}) f_S(\psi) \quad (5)$$

The values of ς_S and ς_L for broadleaved evergreen trees, the PFT specified at the two LBA sites studied here, are $0.0208 \text{ kg C (kgC)}^{-1} \text{ day}^{-1}$ and $0.6339 \text{ kg C (kgC)}^{-1} \text{ day}^{-1}$, respectively. The temperature-dependent Q_{10} function, $f(Q_{10})$, is given by $Q_{10}^{\frac{T-15}{10}}$, where T ($^{\circ}\text{C}$) is the litter (T_L) or soil temperature (T_S). The litter pool contains litter from the stem, leaf and root components. The litter temperature is then a weighted average of the soil temperature of the top layer (as a surrogate for a litter layer temperature) and the mean soil temperature in the rooting zone. The soil carbon in each layer is not explicitly tracked but assumed to adopt an exponential distribution (similar to roots; see Fig. 4 of Jobbágy and Jackson, 2000). T_S is the temperature of the soil carbon pool calculated from the temperature of the individual soil layers weighted by the fraction of soil carbon in each layer. The litter and soil moisture respiration parameters are meant to yield average turnover times of around 1–2 years for litter and 10–40 years for soil carbon, depending on the climate and consistent with observation-based estimates from litter bag experiments (Zhang et al., 2008) and similar experiments for soil carbon. In addition, the model parameters are fine tuned on a global scale to account for differences in litter chemistry of different PFTs, e.g. litter from needleleaf trees generally has lower decomposability compared to the litter from broadleaf trees, and to obtain reasonable global scale geographic distribution of litter and soil carbon when the model is driven with observation-based climate.

CTEM v. 1.2 (Melton and Arora, 2014) used here implements a slightly different Q_{10} parameterization than CTEM v. 1.0 (Arora, 2003). The $f(Q_{10})$ function uses a temperature dependent Q_{10} through a unique formulation in the form of a hyperbolic tan function:

$$Q_{10} = 1.44 + 0.56 \tanh[0.075(46.0 - T)] \quad (6)$$

This formulation is a tradeoff between the common temperature-independent Q_{10} of many terrestrial ecosystem models (e.g., Cox, 2001) and the temperature dependent Q_{10} of Kirschbaum (1995). The use of a constant Q_{10} implies that respiration rate will increase indefinitely as temperature increases. Conversely, the Kirschbaum (1995) formulation yields a continuously increasing Q_{10} as temperature decreases, leading to unreasonably high litter and soil carbon stores at high latitudes in CLASS-CTEM. The CLASS-CTEM formulation Eq. (6) gives a Q_{10} value of around 2. below 20 °C, while for higher temperatures the respiration rate does not continuously increase.

The response of heterotrophic respiration to soil moisture is modelled using the soil moisture scalar ($f(\psi)$) which uses soil matric potential (ψ) instead of soil moisture (θ). Typically, soil matric potential is at, or near, zero when the soil is saturated becoming increasingly negative as the soil dries. Davidson et al. (2000) and Orchard and Cook (1983) show that soil respiration rates are linearly correlated with the logarithm of soil matric potential. Soil matric potential, of course, depends on soil moisture (θ) but is also a function of soil texture. The soil matric potential ($\psi(\theta)$) is defined following Clapp and Hornberger (1978) as:

$$\psi(\theta) = \psi_{\text{sat}} \left(\frac{\theta}{\theta_{\text{sat}}} \right)^{-B} \quad (7)$$

where Ψ_{sat} is the saturated matric potential, θ_{sat} is the saturated soil moisture content (equivalently the soil porosity) and B is the empirical Clapp–Hornberger parameter. Ψ_{sat} , θ_{sat} , and B are calculated as a function of percentage sand (P_{sand}) and clay (P_{clay}) in the soil, following Verseghy (1991, 2012), as

$$\psi_{\text{sat}} = \frac{10^{-0.0131P_{\text{sand}}+1.88}}{100} \quad (8a)$$

$$\theta_{\text{sat}} = \frac{-0.126P_{\text{sand}} + 48.9}{100} \quad (8b)$$

$$B = 0.159P_{\text{clay}} + 2.91 \quad (8c)$$

In principle, other functional forms such as that of Brooks and Corey (1966) and Van Genuchten (1980) may also be used.

The primary premise of soil moisture control on heterotrophic respiration ($f_{S,L}(\psi)$) is that heterotrophic respiration is constrained both when the soils are dry and when they are wet, and optimum conditions lie in between. In very dry soils (absolute soil matric potential > 100 MPa), the soil moisture scalar for both litter and soil carbon is small, limiting microbial respiration. As soils wet and absolute matric potential decreases, heterotrophic respiration increases to a peak when the absolute matric potential is between 0.04 and 0.06 MPa. Griffin (1981) suggests that the microbial activity is optimal at absolute soil matric potential of 0.05 MPa and decreases as the soil becomes waterlogged near 0.00 MPa or too dry near 1.5 MPa. Decreasing the absolute matric potential further to the saturated matric potential reduces the soil moisture scalar reflecting impeded oxygen supply to microbes. The litter microbial respiration is influenced by the matric potential of the top soil layer except it is unimpeded by low absolute matric potentials as it is assumed to be continually exposed to air. While soil matric potential values are usually negative, the absolute value is used here to ensure log math can be performed. Higher absolute values of soil matric potential are associated with drier soils. As such then, litter and soil carbon differ only for $0.04 > \Psi \geq \Psi_{\text{sat}}$ where litter respiration is assumed to not be constrained by high soil moisture content. The resulting soil moisture scalars for heterotrophic respiration from litter and soil carbon pools are shown in Fig. 1a and vary with matric potential as:

$0.04 > \Psi \geq \Psi_{\text{sat}}$:

$$f_S(\psi) = 1 - 0.5 \frac{\log(0.04) - \log \psi}{\log(0.04) - \log \psi_{\text{sat}}} \quad (9)$$

$$f_L(\psi) = 1 \quad (10)$$

$0.06 \geq \Psi \geq 0.04$:

$$f_{S,L}(\psi) = 1 \quad (11)$$

$100.0 \geq \Psi > 0.06$:

$$f_{S,L}(\psi) = 1 - 0.8 \frac{\log \psi - \log(0.06)}{\log(100) - \log(0.06)} \quad (12)$$

$\Psi > 100.0$:

$$f_{S,L}(\psi) = 0.2 \quad (13)$$

An alternative simple linear parameterization

5 We also use an alternative simple linear parameterization for modelling heterotrophic respiration's response to soil moisture (similar to Rohr et al., 2013). In this simple parameterization the soil moisture scalar for heterotrophic respiration is expressed as a function of soil moisture. As soil moisture (θ) decreases from field capacity (θ_f) to wilting point (θ_w) the scalar reduces from one to zero, and this reduces heterotrophic respiration as soils dry.

10 The field capacity soil moisture corresponds to hydraulic conductivity of 0.10 mm day^{-1} and wilting point soil moisture corresponds to matric potential of 150 m water head equivalent (i.e 1.47 MPa). This simple soil moisture scalar is thus expressed as

$$\begin{aligned} f_{S,L}(\theta) &= 1; & \theta > \theta_f \\ f_{S,L}(\theta) &= \frac{\theta - \theta_w}{\theta_f - \theta_w}; & \theta_w < \theta < \theta_f \\ 15 \quad f_{S,L}(\theta) &= 0; & \theta < \theta_w \end{aligned} \quad (14)$$

and shown in Fig. 1b.

Finally, a weighted value of the soil moisture scalar for respiration from the soil carbon pool ($f_S(\psi)$ or $f_S(\theta)$) is found based on fraction of soil carbon in each soil layer that is

20 assumed to follow an exponential distribution.

2.3 Description of LBA sites

CLASS-CTEM simulations were performed for two LBA sites in the Amazonia: (1) Tapajós National Forest near kilometer 83 of the Santarém-Cuiabá highway (hereafter K83, $54^{\circ}56' \text{ W}$, $3^{\circ}3' \text{ S}$) and (2) Jarú Reserve (hereafter RJA, $61^{\circ}56' \text{ W}$, $10^{\circ}5' \text{ S}$) (Fig. 2a). Both

25 sites have been extensively documented (Goulden et al., 2004; da Rocha et al., 2004; Miller

et al., 2004; Keller et al., 2004; da Rocha et al., 2009; Restrepo-Coupe et al., 2013). Field data for these sites cover the periods: 2001–2003 for K83 and 2000–2002 for RJA. These sites were chosen due to their opposing seasonal pattern of NEP; both sites have a distinct dry season, but the land surface at RJA loses carbon to the atmosphere during the dry season while K83 does so during the wet season.

We view K83 and RJA as having ‘functionally’ similar climates with regards to their timing, intensity, and duration of ~~seasonal-drought~~the dry season. While these two sites do differ somewhat in their climates, they do share enough commonalities in climate to suggest that they would have similar NEP seasonal dynamics, rather than the out-of-phase behaviour that is observed and discussed in the Introduction.

K83 is a moist, closed canopy tropical evergreen forest with a five month dry season starting in July (defined by < 100 mm of precipitation in a month) (Fig. 2b). Temperatures vary little year-round with a mean surface air temperature of 26°C (Fig. 2c) and mean annual precipitation over the study period of ca. 1650 mm. The site was selectively logged starting in 2001 (Miller et al., 2007), coincident with the time period investigated. This selective logging at K83 is reported to not significantly influence the energy and carbon fluxes when compared to a nearby undisturbed site (Tapajós National Forest site 67 km) (Miller et al., 2007, 2011). Soil depth at K83 is > 12 m (Oliveira et al., 2005). The soil is a clay-texture Oxisol with patches of sandy-loam textured Ultisol (Silver et al., 2000; Keller et al., 2005).

RJA is a tropical wet and dry, closed canopy evergreen forest. RJA has a higher mean annual precipitation (ca. 2350 mm) than K83, but a drier and shorter dry season (ca. four months) starting in May (Fig. 2b). Surface air temperature is generally slightly higher at K83 (Fig. 2c) with both showing little seasonal variation in surface temperature (ca. $2\text{--}3^{\circ}\text{C}$). RJA has higher mean annual downwelling solar radiation than K83 (Fig. 2d) while both K83 and RJA have small peaks in solar radiation corresponding to the reduced cloud cover of the dry season. Soil depth at RJA is reported to be 1 m (Restrepo-Coupe et al., 2013) and between 0.2 and 4 m (Andreae et al., 2002). The RJA soils have a high sand content (Andreae et al., 2002; de Gonçalves et al., 2013).

Most observation-based estimates we use here for model evaluation are ground-based observations at the RJA and K83 field sites (see Table 1 and Section 3), however we also compare to remotely-sensed GPP provided via the MODIS dataset. We used the Numerical Terradynamic Simulation Group's (NTSG) improved MOD17A2 data set which contains an 8-day summation of GPP. These data are freely available from the NTSG (<http://www.ntsg.umd.edu>) and are corrected for cloud contamination and spatial smoothing of meteorological forcing data. Data gaps in the 8-day MODIS fractional photosynthetically active radiation (FPAR)/LAI that are labeled as cloud-contaminations are filled with linearly interpolated data based on reliable FPAR/LAI. More details can be found in Zhao et al. (2005), Zhao et al. (2005), and Heinsch et al. (2003).

2.4 CLASS-CTEM simulations

~~Since~~ Because the CLASS and CTEM models are designed for application at large spatial scales in an Earth system model (ESM), they are not tuned for any specific location but are expected to behave reasonably realistically at all locations. This is the general expectation from similar land surface parameterization schemes and terrestrial ecosystem models implemented in other ESMs. Melton and Arora (2014) show that the CLASS-CTEM modelling framework reproduces reasonable spatial patterns of gross and net primary productivity, heterotrophic respiration, and terrestrial vegetation and soil carbon pools at the global scale when driven with observation-based climate forcing. Site specific testing of models, such as the one presented in this study, allows to further evaluate if model parameterizations of physical and biogeochemical processes hold at point scales. This site specific testing, of models designed for implementation at large spatial scales, is arguably a more stringent test of their abilities.

For the two LBA sites investigated here, we used the “off-the-shelf” version of the CLASS-CTEM model (as reported in Melton and Arora, 2014), i.e. model parameters were not changed or tuned to improve model performance. Such model parameters include maximum photosynthesis rates, base respiration rates for autotrophic and heterotrophic respiration, and allocation parameters that determine allocation of carbon from leaves to stem

and root components, amongst several others parameters, for CTEM. As described in Section 2.2, we tested the model performance using two different parameterizations of heterotrophic respiration, with both model versions independently spun-up to equilibrium as described below.

5 Simulations were performed for the broadleaf evergreen tree PFT with 100 % fractional cover. The soil depth was set to the full soil column at K83 (4.1 m) and one meter at RJA. Both sites have three soil layers, but the thickness of the third soil layer for RJA is 0.65 m rather than 3.75 m as at K83. Soil textural information was adopted following Table 2 in de Gonçalves et al. (2013). The specification of soil texture is done through percentage of
10 sand and clay in the soil. At RJA percent sand in the first, second and third soil layers are specified at 80 %, 70 % and 60 %, respectively, and percent clay at 10 %, 20 % and 30 % respectively. At K83 % sand in the first, second and third soil layers are specified at 18 %, 20 % and 15 %, respectively, and percent clay at 80 %, 75 % and 80 % respectively. In the full Earth system modelling framework, specification of geophysical fields of soil depth and
15 soil texture is based on global data sets such as that of Zobler (1986), itself based on the FAO soil data. Other soil information besides texture and depth, for e.g. pH, cation exchange capacity, etc. are not presently considered.

All simulations were forced with gap-filled meteorological data from the LBA Data Model Intercomparison Project (de Gonçalves et al., 2013). The data are available at an hourly
20 time step but were changed to half-hourly resolution via linear interpolation, except for solar radiation and precipitation for which an hourly value was assumed to stay the same over two half hourly intervals. Atmospheric CO₂ concentration was set at a constant 375.0 ppm.

Since our focus is on the seasonality of simulated NEP, the model pools were spun up by repeatedly using the three years of observed climate for each site until they reached equilib-
25 rium and the annually averaged NEP was close to zero. Land use change and disturbance (fire) modules were not used in these simulations.

3 Results

3.1 Basic vegetation state

The basic vegetation state simulated by CLASS-CTEM ~~is compared to~~ compares well to the available observation-based estimates ~~in Table 1.~~ (Table 1). CLASS-CTEM simulates reasonable LAIs with a slight overestimate at RJA but matching observations at K83. The total vegetation biomass simulated by CLASS-CTEM at K83 is somewhat lower than observed. Our underestimation could be due to a lower carbon use efficiency (CUE; ratio of NPP/GPP) simulated at this site than in reality. CUE is affected by several factors including stand age and the ratio of leaf mass to total mass (DeLucia et al., 2007). Our K83 CUE estimate (ca. 0.31) is in-line with measurements by Malhi et al. (2009a) for LBA sites with shorter dry seasons (Manaus K34: 0.34 ± 0.10 and Caxiuanã: 0.32 ± 0.07), but lower than a nearby site (Tapajós 67K: 0.49 ± 0.16) with similar dry season length to K83. Our underestimate likely reflects our use of a single PFT, without site-level calibration of model parameters, to characterize the diversity of tropical broadleaf evergreen trees. As a result, the total biomass simulated is somewhat lower than observed for both the aboveground and belowground biomass pools. The modeled soil carbon pool compares well with estimates, while the litter pool is larger than observed as the simulated litter pool includes contributions from not only leaves, but stems and roots as well. Overall, CLASS-CTEM reasonably simulates the forest structure at K83, although there is much less data available for model evaluation at RJA.

3.2 Carbon and energy fluxes

The NEP estimates derived from eddy covariance measurements at K83 and RJA are shown in Fig. 3a along with the simulated CLASS-CTEM values. The annual mean is subtracted from the monthly observation-based values so that they are directly comparable to simulated values with a net zero annual NEP. Simulated NEP at both sites shows good agreement with observation-based estimates for both timing and amplitude (at K83

$R^2 = 0.81$, root mean standard error (RMSE) = $11.99 \text{ g C m}^{-2} \text{ month}^{-1}$; at RJA $R^2 = 0.51$, RMSE = $15.34 \text{ g C m}^{-2} \text{ month}^{-1}$). CLASS-CTEM successfully captures carbon uptake by land at K83 and loss at RJA during the dry season. To better understand how CLASS-CTEM is able to realistically capture the seasonal NEP dynamics, we look at its constituent components – GPP, NPP, R_a and R_h – as a realistic NEP estimate is dependent upon realistic seasonal cycles of GPP, R_a and R_h .

The simulated GPP at RJA is shown in Fig. 3b together with the MODIS estimated GPP (Zhao et al., 2005). While the simulated GPP averages about 10% higher than the MODIS estimate, they both exhibit a significant drop in GPP as the dry season progresses (of similar magnitude, ca. 22% for MODIS and ca. 24% for CLASS-CTEM, and bottoming out in August) $R^2 = 0.50$, RMSE = $36.6 \text{ g C m}^{-2} \text{ month}^{-1}$. At K83, CLASS-CTEM simulates no seasonal drop in GPP (Fig. 3c). The flux tower-based GPP estimate from Miller et al. (2009) shows a small decrease with the lowest values in July while the MODIS estimate increases over the same period (Fig. 3c). It is not readily apparent which of the two estimates is correct. The behavior of CLASS-CTEM simulated GPP falls between the two observation-based estimates (CTEM-MODIS $R^2 = 0.14$, RMSE = $55.96 \text{ g C m}^{-2} \text{ month}^{-1}$ and CTEM-Flux tower $R^2 = 0.26$, RMSE = $24.62 \text{ g C m}^{-2} \text{ month}^{-1}$). Both K83 and RJA experience increases in downwelling solar radiation during the dry season due to less cloud cover (Fig. 2d) however, the influence on NEP seasonality is relatively weak due to the already high insolation levels (not shown). This lack of light limitation in these regions has also been reported by a recent remote sensing study (Morton et al., 2014). The difference in the GPP seasonal cycle at K83 vs. RJA is interesting. The dry season decrease in simulated GPP at RJA is due to both the shallow soil column and the sandy soil texture. In our simulations, the soil column extends to a maximum of 4.1 m (as is the case for K83) while the soil column at RJA was set to one meter (Sects. 2.2 and 2.3). The shallow soil column, together with a sandy soil texture, causes the RJA vegetation to experience more dry-season water stress than at K83. The deep soil column and lower hydraulic conductivity (associated with higher clay content) at K83 gives lower drainage rates leading to higher soil moisture levels and plant available water during the dry season (as shown later in Fig. 7) compared to RJA.

How is CLASS-CTEM able to accurately simulate GPP during the dry season without explicit simulation of deep roots, HR, or particularly deep soils? The answer appears to be due to a combination of factors, the most important of which is the site specification of the geophysical fields of soil depth and soil texture. The soil depth at RJA is shallow. Simulations with the standard CLASS-CTEM soil depth for this grid cell (4.1 m; based upon values in Zobler, 1986) result in little water stress (and thereby little GPP suppression), while incorporating the observed shallow soil depth greatly improved the simulation result. Rooting depth in CLASS-CTEM also influenced the K83 GPP as CLASS-CTEM has a dynamic root distribution (Arora and Boer, 2003). While not an explicit representation of deep roots, conditions such as seasonal drought regions with extended dry seasons cause the plants to allocate more carbon to roots, allowing access to moisture by roots in the model's lowest soil layer. The water loss from transpiration in CLASS-CTEM is proportional to fraction of roots present in each soil layer. The same fraction of roots in each soil layer is also used to calculate water stress on photosynthesis. Shallower soil depth implies, that the fraction of roots in deeper soil layers is reduced, which increases water stress on photosynthesis and also reduces transpiration during the dry season.

The CLASS-CTEM simulated autotrophic respiration values for RJA and K83 show relatively little variation throughout the year with similar mean annual values of around $2.2 \text{ kg C m}^{-2} \text{ year}^{-1}$ (Fig. 3d). RJA has a slightly higher R_a value than K83 reflecting its higher simulated total biomass (Table 1). The constancy of R_a indicates the seasonal cycle of NPP at these sites (Fig. 3e) is primarily driven by changes in GPP (Fig. 3b and c). This constancy in autotrophic respiration is consistent with observation-based estimates of Rowland et al. (2014) from a seasonally dry Amazonian forest in French Guiana.

The simulated heterotrophic respiration (R_h) seasonal cycles at RJA and K83 are, like GPP, very different between the sites (Fig. 3f). Simulated R_h at K83 shows a large seasonal cycle (amplitude ca. $80 \text{ g C m}^{-2} \text{ month}^{-1}$) with a peak in the wet season and a low at the end of the dry season. RJA, conversely, has a small seasonal cycle (amplitude $< 30 \text{ g C m}^{-2} \text{ month}^{-1}$) but a similar annual total to K83 ($1042 \text{ g C m}^{-2} \text{ yr}^{-1}$ and $969 \text{ g C m}^{-2} \text{ yr}^{-1}$ at RJA and K83, respectively) and a peak in October as the precipitation

starts increasing after the dry season ends. The simulated difference in seasonal cycle of R_h between the sites corresponds to how soil moisture and texture influence R_h . Figure 3f also compares the CTEM simulated seasonal cycle of heterotrophic respiration at K83 with a quasi-observation-based estimate ($R^2 = 0.81$, $RMSE = 17.82 \text{ g C m}^{-2} \text{ month}^{-1}$). Miller et al. (2009) provide an observation-based estimate of ecosystem respiration ($R_a + R_h$) for the K83 site. There are no similar observations available for RJA. The quasi-observation-based estimate of heterotrophic respiration is obtained by assuming that the autotrophic respiration is constant over the year (equal to the annual mean simulated by CLASS-CTEM, $180 \text{ g C m}^{-2} \text{ month}^{-1}$) and by subtracting it from the observation-based ecosystem respiration. In the absence of separate observation-based estimates of R_a and R_h , this is a reasonable assumption since both the air temperature and simulated autotrophic respiration show very little seasonality. A similar assumption is made by Rowland et al. (2014) who estimate root respiration by assuming that it is constant and that the seasonal changes in soil respiration are caused by heterotrophic processes. Derived in this way, the seasonality and amplitude of the annual cycle of the quasi-observation-based estimate of heterotrophic respiration compares well with the values simulated by CLASS-CTEM.

The seasonality in simulated heterotrophic respiration at K83 and RJA, respectively, is primarily the result of the seasonality in soil matric potential at these sites since air temperature (Fig. 2c) shows relatively small seasonality. Simulated daily average soil moisture scalars for heterotrophic respiration from litter and soil carbon pools at the two sites are shown in Fig. 4 and explain the seasonality of simulated heterotrophic respiration at the two sites. These soil moisture scalars are based on Equations 9–13. RJA soils have a high sand content while K83 soils have a high clay content (Sect. 2.3). For the same soil moisture, the absolute matric potential is higher for clay-rich soils compared to sandy ones. The influence of these differences in soil texture on the R_h soil moisture scalar for litter and soil carbon is visible in Fig. 4. The high sand content at RJA results in a relatively stable soil matric potential, and the resulting stable soil moisture scalar for R_h , throughout the year. This relatively steady matric potential, along with stable temperatures at RJA (Fig. 2c), gives low seasonal variability in R_h (Fig. 3f). Conversely, during the rainy season, when soils are wet, K83's ab-

solute matric potential is lower than at RJA; while as the dry season progresses its absolute matric potential becomes higher due to clay tightly binding the steadily decreasing soil water which limits R_h . Combined with realistic simulated GPP seasonality CLASS-CTEM yields seasonality of NEP that compares well with observation-based NEP at both locations.

3.3 Energy fluxes

Figure 5 shows the simulated seasonality of energy fluxes and Bowen ratio at the two sites, compared to available eddy covariance based estimates. Both simulated net radiation (Fig. 5a), and simulated and eddy covariance based estimates of latent (Fig. 5b) and sensible (Fig. 5c) heat fluxes, as well as the Bowen ratio (Fig. 5d), do not show any significant seasonality. CTEM simulated net radiation compares well to observations at both K83 ($R^2 = 0.67$, $RMSE = 9.78 \text{ W m}^{-2} \text{ month}^{-1}$) and RJA ($R^2 = 0.89$, $RMSE = 3.97 \text{ W m}^{-2} \text{ month}^{-1}$). Simulated latent heat flux is higher than observations at both sites. Simulated sensible heat flux at K83 has a poor correlation with observations, while at RJA simulated sensible heat flux compares reasonably well with observations ($R^2 = 0.48$, $RMSE = 8.03 \text{ W m}^{-2} \text{ month}^{-1}$). The simulated Bowen ratio compares reasonably with the eddy covariance based estimate at RJA ($R^2 = 0.32$, $RMSE = 0.054$) but poorly at K83 ($R^2 = 0.12$, $RMSE = 0.200$) with lower simulated values than observations. We note that the observations from K83 have energy balance closure but those from RJA do not. This implies that CTEM does not partition the sensible and latent heat fluxes correctly at K83, which is a deficiency in the model. However, the simulated seasonality of latent heat fluxes (K83 $R^2 = 0.59$, $RMSE = 20.02 \text{ W m}^{-2} \text{ month}^{-1}$; RJA $R^2 = 0.34$, $RMSE = 25.50 \text{ W m}^{-2} \text{ month}^{-1}$) compares well with the eddy covariance based estimates. Both the simulated and eddy covariance based latent heat fluxes peak in same months of October and August/September at the RJA and K83 sites, respectively. The simulated sensible heat fluxes, however, peak a month (August) earlier at the RJA site than the eddy covariance based estimate (September).

3.4 Litter fall rate and litter and soil carbon pools

Figure 6 shows the seasonality in litter fall rate, and the litter and soil carbon pools. In Fig. 6a, the simulated litter fall rate at the K83 site is compared with the observation-based estimate. The observation-based estimate includes leaf litter, fallen wood and flowers and reproductive organs (http://daac.ornl.gov/LBA/guides/CD04_Leaf_Litter.html, Goulden et al., 2004) but covers only one year (2002). The simulated litter fall rate includes litter from the leaves and the stem components of the model and shows the model average and range over the three years (2001–2003) from which climate data are used repeatedly. Observation-based litter fall peaks during the beginning of dry season while the simulated litter fall, which primarily responds to soil moisture, peaks in October when the soil is driest (Fig. 7d; $R^2 = 0.11$, $RMSE = 27.85 \text{ g C m}^{-2} \text{ month}^{-1}$). The simulated annual litter fall rate is also about 30 % lower than the observation-based estimate. Since there is only one year of observed litter fall data, it is uncertain how representative this year is, but assumed here to be reasonably typical. This discrepancy in the total amount and the seasonality of litter fall rate simulated by terrestrial ecosystem models has been noted by De Weirdt et al. (2012) and Kim et al. (2012), both of which attempt to parameterize increased litter fall during the dry season using different methods. To influence the timing of litter fall, Kim et al. (2012) make leaf litter fall rate a function of 10 day averaged radiation in the Ecosystem Demography (ED2) model and test the parameterization at the Tapajós 67 km site. Since seasonally dry tropical forests experience higher radiation during the drier, relatively cloud-less, season, the parameterization results in increased leaf litter generation during the dry season. As photosynthetic capacity in ED2 is inversely proportional to leaf longevity, increased dry season litter generation leads to a reduction in mean leaf age and thereby increased photosynthetic capacity. De Weirdt et al. (2012) use an entirely different approach to generate increased leaf litter during the dry season. They use the ORCHIDEE model, which is the terrestrial carbon cycle component of the Institut Pierre Simon Laplace (IPSL) ESM (Dufresne et al., 2013) so, similar to CTEM, site specific parameterizations and coefficients cannot be used. Assuming leaf turnover as a strategy for leaf renewal to increase light use, De Weirdt

et al. (2012) parameterize leaf litter generation such that when LAI is greater than 6, the carbon lost through litter generation by the oldest leaves is equal to the carbon allocated to making new leaves. The ORCHIDEE model tracks leaf age in four age classes and maximum photosynthetic rate is a function of leaf age. Thus, similar to the ED2 model, increased leaf litter generation decreases leaf age and increases primary productivity. CTEM does not represent this process of enforced increased dry season leaf litter generation and reduced leaf age. In CTEM leaf litter generation is based on a base leaf loss rate that increases due to drought and cold stress.

Figure 6b shows the simulated litter fall rate from the leaves and the stem components of CTEM at the RJA site which peaks during August when the soil is the most dry (Fig. 7b). In Fig. 6c the simulated litter pools at the K83 and RJA sites show some seasonality while the simulated soil carbon pools (Fig. 6d) do not.

3.5 Soil moisture and temperature

~~Figure 7 shows the The simulated soil temperature and soil moisture at the two sites and compares them compares reasonably with available observation-based estimates at K83 . Simulated soil moisture and temperature are not directly comparable to observations since observations correspond to a specific depth while the model simulated soil moisture and temperature correspond to averages over its respective three soil layers. The simulated values reported in Fig.(Figure 7at depths corresponding to observations are obtained by assuming that the modelled soil moisture and temperature correspond to the center of its three soils layers and linearly interpolating between them. The modelled soil moisture and temperature compare reasonably with available observation-based estimates at K83)~~ (10 cm depth: $R^2 = 0.77$, $RMSE = 1.26^\circ\text{C}$, 20 cm depth: $R^2 = 0.80$, $RMSE = 1.18^\circ\text{C}$, and 50 cm depth: $R^2 = 0.77$, $RMSE = 1.04^\circ\text{C}$), although the simulated seasonality in modelled values is higher and simulated soil moisture is lower than observed at 20 cm and 40 cm depths (Fig. 7d)(10 cm depth: $R^2 = 0.87$, $RMSE = 0.05\text{ m}^3\text{ m}^{-3}$, 20 cm depth: $R^2 = 0.82$, $RMSE = 0.14\text{ m}^3\text{ m}^{-3}$, and 40 cm depth: $R^2 = 0.88$, $RMSE = 0.14\text{ m}^3\text{ m}^{-3}$). Simulated soil moisture and temperature are not directly comparable to observations since observations

correspond to a specific depth while the model simulated soil moisture and temperature correspond to averages over its respective three soil layers. The simulated values reported in Fig. 7 at depths corresponding to observations are obtained by assuming that the modelled soil moisture and temperature correspond to the center of its three soil layers and linearly interpolating between them.

Land surface schemes are known to simulate different soil moisture states when driven with the same meteorological forcing; each with its own mean state and a preferred “operating range” of soil moisture (e.g. see Dirmeyer, 2011). So the bias in simulated soil moisture at 20 cm and 40 cm is not of particular concern given that CLASS-CTEM reasonably simulates the timing of the onset of dry and wet states. Note that while the bias in mean soil moisture can be accounted for by adjusting the base heterotrophic respiration rates for litter and soil carbon, it is difficult to account for incorrect seasonality in simulated soil moisture.

3.6 Alternative parameterization

The results from the use of the alternative simple linear parameterization for modelling the response of heterotrophic respiration to soil moisture (Eq. 14) are shown in Fig. 8. This alternative parameterization yields an increased amplitude of the simulated seasonal cycle of heterotrophic respiration for both sites (Fig. 8a), compared to the results from the standard parameterization shown earlier (Fig. 3f). The result of this increased seasonality is that the simulated annual cycle of NEP at RJA is reversed and the amplitude of simulated seasonal NEP cycle is larger at K83 (Fig. 8b). The RMSE and R^2 values when using the alternative parameterization (K83 $R^2 = 0.10$, RMSE = 35.70 g C m⁻² month⁻¹; RJA $R^2 = 0.20$, RMSE = 28.75 g C m⁻² month⁻¹) are also poorer at both sites compared to the standard parameterization (K83 $R^2 = 0.81$, RMSE = 11.99 g C m⁻² month⁻¹; RJA $R^2 = 0.51$, RMSE = 15.34 g C m⁻² month⁻¹). At RJA, GPP decreases during the dry season (Fig. 3b). The use of the alternate parameterization, for modelling the response of heterotrophic respiration to soil moisture, decreases heterotrophic respiration during the dry season to a larger extent than the decrease in GPP and as a result the carbon uptake by land occurs during the dry season, contrary to observations. When using the CLASS-

CTEM standard parameterization, the decrease in heterotrophic respiration is much smaller than the decrease in GPP and the land loses carbon during the dry season, consistent with observations. At K83, since the simulated GPP does not exhibit any significant seasonality (Fig. 3c), the seasonality in NEP is the result of seasonality in heterotrophic respiration. As a result, an increased amplitude of the simulated seasonal cycle of heterotrophic respiration with the alternative parameterization gives an increased amplitude of the simulated annual cycle of NEP, which does not compare well with observation-based estimates.

4 Discussion and conclusions

Accurate simulation of NEP in seasonally dry Amazonian forests has proven challenging for many terrestrial ecosystem models. Earlier studies have mostly suggested including processes such as deep roots, plant-mediated hydraulic redistribution of soil moisture, and deep soils that help increase dry season GPP. Baker et al. (2008) also adjusted the response of heterotrophic respiration to soil moisture in their model to correctly simulate the seasonality of carbon fluxes. More recent studies of Kim et al. (2012) and De Weirdt et al. (2012) include yet another physical process that aims to reduce leaf age, and thus increase primary production, by generating more leaf litter during the dry season as the observations suggest. Both these studies use different parameterizations to achieve this effect with varying success. In particular, the parameterization used by De Weirdt et al. (2012) improves and increases the simulated GPP at the Guyaflux site during the dry season (their Fig. 8a), but the increase in dry season GPP at the Tapajos km 67 site makes the comparison with observations worse than their standard model version (their Fig. 8b). Additionally, Poulter et al. (2009) used a phenology parameterization based on radiation (similar to Kim et al., 2012) and found, at least in the LPJml model, that the influence of seasonality in LAI was unimportant compared to deep roots and soil in contributing to NEP seasonality.

Recent observation-based estimates from Rowland et al. (2014) for a seasonally dry tropical forest site in French Guiana show that heterotrophic respiration reduces during the dry season, while autotrophic respiration does not. Since air temperature does not exhibit

any significant seasonality in these forests, the seasonality of NEP is primarily controlled by the seasonality in precipitation and soil moisture. As a result then, the simulated response of both GPP and heterotrophic respiration to soil moisture must be correctly captured to realistically model NEP in seasonally dry tropical forests.

5 4.1 Simulation of NEP

We use observed net ecosystem productivity fluxes from two sites in the LBA network (K83 and RJA) to test the hypothesis that seasonality in heterotrophic respiration exerts a strong control on the seasonality of NEP by using the CLASS-CTEM model that is designed for implementation at large spatial scales in the Canadian Earth system model. These sites have similar climate but yield opposing patterns of seasonal NEP. CLASS-CTEM is used “off-the-shelf” without inclusion of deep roots and soils, without hydraulic redistribution of soil moisture and without any processes that enforce decreased leaf age during the dry season.

The CLASS-CTEM model realistically simulates the timing and magnitude of the NEP seasonal cycle at both K83 and RJA as well as the relatively small seasonality in the energy fluxes at both sites. Our simulations suggest that CLASS-CTEM performs well due to two main factors: site specific geophysical information about soil texture and depth; and an appropriate heterotrophic respiration response to soil moisture expressed in terms of soil matric potential. These results support our hypothesis that heterotrophic respiration exerts a strong control on the seasonality of NEP in seasonally dry tropical forests. The defining characteristic of these two LBA sites, as expressed in our simulations, is their differing soils, given they have similar vegetation and climate.

4.2 Heterotrophic respiration response to soil moisture

While the decrease in heterotrophic respiration during the dry season is essential to simulating the correct seasonality in NEP, how much reduction in heterotrophic respiration occurs is also important. The simple alternative linear parameterization that progressively reduces

heterotrophic respiration as soils get drier is unable to correctly reproduce the seasonality of NEP at both sites. There are two main differences between the standard parameterization used in CTEM and the simple alternative parameterization that we have used to model the response of heterotrophic respiration to soil moisture. First, the response of heterotrophic respiration to soil moisture is parameterized in terms of soil matric potential in the standard CLASS-CTEM parameterization while it is parameterized in terms of soil moisture itself in the simple alternative parameterization. Second, the standard CLASS-CTEM parameterization assumes that soil moisture conditions for heterotrophic respiration are optimum when the soil is neither too dry nor too wet, while the alternative parameterization assumes that heterotrophic respiration is not constrained at high soil moistures and it reduces progressively to zero as soils get drier. Both of these differences contribute to improve simulated NEP seasonality at the two sites in the standard CLASS-CTEM parameterization. Additional simulations performed with a variant of the alternative parameterization (not shown) suggest that the factor most influencing these two sites is that heterotrophic respiration does not shut down completely when the soil moisture is below the wilting point.

4.3 Litter fall

In the end a realistic simulation of NEP at both sites is the result of overall reasonable performance of the various components of the model as confirmed by comparing simulated basic vegetation state; GPP; heterotrophic respiration; latent and sensible heat fluxes; net radiation; and soil moisture and temperature against available observation-based estimates. The simulated litter fall rate, however, shows some limitations. As with most terrestrial ecosystem models, the litter fall rate in CTEM is based on leaf life span and responds to soil moisture and temperature. The simulated litter fall rate peaks at the end of the dry season at both K83 and RJA sites in response to driest soil moisture conditions, while observations suggest that litter fall rates peak during the beginning of dry season, at least at the K83 site. This limitation in simulated litter fall is, however, not expected to substantially affect the seasonality of simulated heterotrophic respiration. This is confirmed by comparing Figs. 3f and 6c. The simulated heterotrophic respiration at K83 is lowest in October while

the litter pool is at its lowest in July. Improved seasonality in litter fall rate would somewhat change the seasonality of the litter pool, but as long as litter is available the seasonality of heterotrophic respiration at these sites is primarily determined by the soil moisture and temperature scalars in Eq. (4). Our results then suggest that: (1) it is possible to realistically simulate the opposite NEP seasonality at the two sites considered here, without including processes that aim to increase dry season GPP, (2) the response of heterotrophic respiration to soil moisture appears to play an important role in simulating the NEP seasonality, and (3) the NEP seasonality is simulated more realistically when the response of heterotrophic respiration to soil moisture includes consideration of soil matrix potential and an optimum soil moisture when the soil is neither too dry nor too wet. Given the sensitivity of simulated heterotrophic respiration to soil texture and soil depth, the results indicate that these geophysical fields must be specified as realistically as possible.

4.4 Final comments

The results of this study are also relevant for application of the Canadian and other ESMs to study the effect of climate change on the global carbon cycle. Arora and Boer (2014), for example, investigate the effect of the climate change and increasing atmospheric CO₂ on the global land carbon budget with a focus on the Amazonian region using results from the second generation Canadian ESM (CanESM2). The evaluation of simulated atmosphere–land energy and CO₂ fluxes by CLASS-CTEM against site-specific observation-based data provides excellent opportunities to assess its performance, compared to the usual evaluation exercises where the broad geographical distribution of simulated primary carbon fluxes and pools is compared with observation-based estimates (e.g. Melton and Arora, 2014). Indeed, the evaluation of models designed for implementation at large spatial scales against observation-based energy and CO₂ fluxes at a point location is a more stringent test of their abilities.

Greater understanding of the Amazonian region provided by observations has been used to improve models, but at the same time models have provided new insights themselves. Models remain, however, only a representation of reality. For a given ecosystem under con-

sideration, different models often yield different results providing, sometimes widely, different perspectives on the behavior of an ecosystem. In the end the confluence of the modeling and observation efforts are a consensus-building exercise to determine how an ecosystem responds to biotic and abiotic drivers. The current consensus about seasonally dry tropical forests is that deep roots and soils, and hydraulic redistribution of soil moisture play an important role in the seasonality of energy and CO₂ fluxes. As a result these processes have been incorporated into models as part of attempts to correctly simulate NEP seasonality. However, any new processes incorporated into a model bring with them a raft of imperfect parameterizations and ‘tunable’ parameters that can easily result in problems with equifinality (Tang and Zhuang, 2008), where any model response can be achieved by simply tuning parameters. ~~Thus we are interested in capturing the broad scale behaviour of the system in a parsimonious manner, with as few poorly constrained processes as possible.~~

While recognized in the existing literature, the role of an appropriate heterotrophic respiration response to soil conditions has been relatively under-appreciated. This is perhaps not surprising because GPP estimates reproduced from a typical set of eddy covariance measurements are much more widely reported and reliable than the heterotrophic respiration measurements which exhibit significant spatial heterogeneity. Recent, observation-based estimates from Rowland et al. (2014), however, indicate the important role of heterotrophic respiration. As NEP is the balance between heterotrophic respiration and net primary productivity, accurate simulation of heterotrophic respiration is equally vital to estimates of NEP. Together with an understanding of the response of heterotrophic respiration to seasonally varying soil moisture as seen in observation-based estimates from Rowland et al. (2014), the results provided in this study suggest that the under-appreciated role of soil moisture in controlling heterotrophic respiration deserves attention as well.

Author contribution. V. A. initiated the study, J. M. and V. A. designed experiments. R. S. ran simulations, performed statistics, and created figures. J. M. and V. A. analyzed the results and wrote the manuscript.

Acknowledgements. J. R. Melton was supported by a National Scientific and Engineering Research Council of Canada (NSERC) Visiting Postdoctoral Fellowship. R. K. Shrestha was supported by

Canadian Network for Regional Climate and Weather Processes (CNRCWP) that is funded by the Climate Change and Atmospheric Research initiative of NSERC. We thank the LBA project for making their data available, in particular Celso Von Randow for sharing RJA NEP data. We thank Maosheng Zhao for helping us access the MODIS GPP data. All data generated by CLASS-CTEM is available from CCCma upon completion of a licensing agreement. We also thank Ian Baker and Mathew Williams for their helpful comments on the discussion version of this paper.

References

Andrae, M. O., Artaxo, P., Brandão, C., Carswell, F. E., Ciccioli, P., da Costa, A. L., Culf, A. D., Esteves, J. L., Gash, J. H. C., Grace, J., Kabat, P., Lelieveld, J., Malhi, Y., Manzi, A. O., Meixner, F. X., Nobre, A. D., Nobre, C., Ruivo, M. d. L. P., Silva-Dias, M. A., Stefani, P., Valentini, R., von Jouanne, J., and Waterloo, M. J.: Biogeochemical cycling of carbon, water, energy, trace gases, and aerosols in Amazonia: the LBA-EUSTACH experiments, *J. Geophys. Res.-Atmos.*, 107, LBA33-1–LBA33-25, 2002.

Arora, V. K.: Simulating energy and carbon fluxes over winter wheat using coupled land surface and terrestrial ecosystem models, *Agr. Forest Meteorol.*, 118, 21–47, 2003.

Arora, V. K. and Boer, G. J.: A representation of variable root distribution in dynamic vegetation models, *Earth Interact.*, 7, 1–19, 2003.

Arora, V. K. and Boer, G. J.: A parameterization of leaf phenology for the terrestrial ecosystem component of climate models, *Glob. Change Biol.*, 11, 39–59, 2005.

Arora, V. K. and Boer, G. J.: Terrestrial ecosystems response to future changes in climate and atmospheric CO₂ concentration, *Biogeosciences*, 11, 4157–4171, doi:10.5194/bg-11-4157-2014, 2014.

Arora, V. K., Scinocca, J. F., Boer, G. J., Christian, J. R., Denman, K. L., Flato, G. M., Kharin, V. V., Lee, W. G., and Merryfield, W. J.: Carbon emission limits required to satisfy future representative concentration pathways of greenhouse gases, *Geophys. Res. Lett.*, 38, L05805, doi:10.1029/2010GL046270, 2011.

Baker, I. T., Prihodko, L., Denning, A. S., Goulden, M., Miller, S., and da Rocha, H. R.: Seasonal drought stress in the Amazon: reconciling models and observations, *J. Geophys. Res.-Biogeo.*, 113, G00B01, doi:10.1029/2007JG000644, 2008.

Baker, I., Harper, A., da Rocha, H., Denning, A., Araújo, A., Borma, L., Freitas, H., Goulden, M., Manzi, A., Miller, S., Nobre, A., Restrepo-Coupe, N., Saleska, S., Stöckli, R., von Randow, C.,

- and Wofsy, S.: Surface ecophysiological behavior across vegetation and moisture gradients in tropical South America, *Agr. Forest Meteorol.*, 182, 177–188, 2013.
- Bousquet, P., Peylin, P., Ciais, P., Le Quééré, C., Friedlingstein, P., and Tans, P. P.: Regional changes in carbon dioxide fluxes of land and oceans since 1980, *Science*, 290, 1342–1347, 2000.
- 5 Brooks, R. H. and Corey, A. T.: Properties of porous media affecting fluid flow, *J. Irrig. Drain. E.-ASCE*, 92, 61–88, 1966.
- Bruno, R. D., da Rocha, H. R., de Freitas, H. C., Goulden, M. L., and Miller, S. D.: Soil moisture dynamics in an eastern Amazonian tropical forest, *Hydrol. Process.*, 20, 2477–2489, 2006.
- Clapp, R. B. and Hornberger, G. M.: Empirical equations for some soil hydraulic properties, *Water Resour. Res.*, 14, 601–604, 1978.
- 10 Cox, P.: Description of the TRIFFID dynamic global vegetation model, [metoffice.gov.uk](http://www.metoffice.gov.uk/media/pdf/9/h/HCTN_24.pdf), available at: http://www.metoffice.gov.uk/media/pdf/9/h/HCTN_24.pdf, 2001.
- Cox, P. M., Betts, R. A., Jones, C. D., Spall, S. A., and Totterdell, I. J.: Acceleration of global warming due to carbon-cycle feedbacks in a coupled climate model, *Nature*, 408, 184–187, 2000.
- 15 Cox, P. M., Pearson, D., Booth, B. B., Friedlingstein, P., Huntingford, C., Jones, C. D., and Luke, C. M.: Sensitivity of tropical carbon to climate change constrained by carbon dioxide variability, *Nature*, 494, 341–344, 2013.
- Da Rocha, H. R., Goulden, M. L., Miller, S. D., Menton, M. C., Pinto, L. D. V. O., de Freitas, H. C., and e Silva Figueira, A. M.: Seasonality of water and heat fluxes over a tropical forest in eastern Amazonia, *Ecol. Appl.*, 14, 22–32, 2004.
- 20 Da Rocha, H. R., Manzi, A. O., Cabral, O. M., Miller, S. D., Goulden, M. L., Saleska, S. R., Coupe, R.-N., Wofsy, S. C., Borma, L. S., Artaxo, P., Vourlitis, G., Nogueira, J. S., Cardoso, F. L., Nobre, A. D., Kruijt, B., Freitas, H. C., von Randow, C., Aguiar, R. G., and Maia, J. F.: Patterns of water and heat flux across a biome gradient from tropical forest to savanna in Brazil, *J. Geophys. Res.-Biogeo.*, 114, G00B12, doi:10.1029/2007JG000640, 2009.
- 25 Davidson, E. A., Verchot, L. V., Cattanio, J. H., Ackerman, I. L., Carvalho, J. E. M.: Effects of soil water content on soil respiration in forests and cattle pastures of eastern Amazonia, *Biogeochemistry*, 48, 53–69, 2000.
- Telles, E. C. C., Camargo, P. B., Martinelli, L. A., Trumbore, S. E., Costa, E. S., Santos, J., Higuchi, N., and Oliveira Jr., R. C.: Influence of soil texture on carbon dynamics and storage potential in tropical forest soils of Amazonia, *Global Biogeochem. Cy.*, 17, 1040, doi:10.1029/2002GB001953, 2003.
- 30

- De Gonçalves, L. G. G., Borak, J. S., Costa, M. H., Saleska, S. R., Baker, I., Restrepo-Coupe, N., Muza, M. N., Poulter, B., Verbeeck, H., Fisher, J. B., Arain, M. A., Arkin, P., Cestaro, B. P., Christoffersen, B., Galbraith, D., Guan, X., van den Hurk, B. J. j. m., Ichii, K., Imbuzeiro, H. M. A., Jain, A. K., Levine, N., Lu, C., Miguez-Macho, G., Roberti, D. R., Sahoo, A., Sakaguchi, K., Schaefer, K., Shi, M., Shuttleworth, W. J., Tian, H., Yang, Z.-L., and Zeng, X.: Overview of the Large-Scale Biosphere–Atmosphere Experiment in Amazonia Data Model Intercomparison Project (LBA-DMIP), *Agr. Forest Meteorol.*, 182, 111–127, 2013.
- DeLucia, E. H., Drake, J. E., Thomas, R. B., and Gonzalez-Meler, M.: Forest carbon use efficiency: is respiration a constant fraction of gross primary production?, *Glob. Change Biol.*, 13, 1157–1167, 2007.
- De Weirdt, M., Verbeeck, H., Maignan, F., Peylin, P., Poulter, B., Bonal, D., Ciais, P., and Steppe, K.: Seasonal leaf dynamics for tropical evergreen forests in a process-based global ecosystem model, *Geosci. Model Dev.*, 5, 1091–1108, doi:10.5194/gmd-5-1091-2012, 2012.
- Dirmeyer, P. A.: A history and review of the Global Soil Wetness Project (GSWP), *J. Hydrometeorol.*, 12, 729–749, 2011.
- Doughty, C. and Goulden, M.: Seasonal patterns of tropical forest leaf area index and CO₂ exchange, *J. Geophys. Res.*, 113, G00B06, doi:10.1029/2007JG000590, 2008.
- Dufresne, J.-L., Foujols, M.-A., Denvil, S., Caubel, A., Marti, O., Aumont, O., Balkanski, Y., Bekki, S., Bellenger, H., Benshila, R., Bony, S., Bopp, L., Braconnot, P., Brockmann, P., Cadule, P., Cheruy, F., Codron, F., Cozic, A., Cugnet, D., de Noblet, N., Duvel, J.-P., Ethé, C., Fairhead, L., Fichefet, T., Flavoni, S., Friedlingstein, P., Grandpeix, J.-Y., Guez, L., Guilyardi, E., Hauglustaine, D., Hourdin, F., Idelkadi, A., Ghattas, J., Jousaume, S., Kageyama, M., Krinner, G., Labetoulle, S., Lahellec, A., Lefebvre, M.-P., Lefevre, F., Levy, C., Li, Z. X., Lloyd, J., Lott, F., Madec, G., Mancip, M., Marchand, M., Masson, S., Meurdesoif, Y., Mignot, J., Musat, I., Parouty, S., Polcher, J., Rio, C., Schulz, M., Swingedouw, D., Szopa, S., Talandier, C., Terray, P., Viovy, N., and Vuichard, N.: Climate change projections using the IPSL-CM5 Earth System Model: from CMIP3 to CMIP5, *Clim. Dynam.*, 40, 2123–2165, 2013.
- El-Masri, B., Barman, R., Meiyappan, P., Song, Y., Liang, M., and Jain, A. K.: Carbon dynamics in the Amazonian Basin: integration of eddy covariance and ecophysiological data with a land surface model, *Agr. Forest Meteorol.*, 182, 156–167, 2013.
- Fu, R., Yin, L., Li, W., Arias, P. A., Dickinson, R. E., Huang, L., Chakraborty, S., Fernandes, K., Liebmann, B., Fisher, R., and Myneni, R. B.: Increased dry-season length over southern Amazonia

- in recent decades and its implication for future climate projection, *P. Natl. Acad. Sci. USA*, 110, 18110–18115, doi:10.1073/pnas.1302584110, 2013.
- 5 Gatti, L. V., Gloor, M., Miller, J. B., Doughty, C. E., Malhi, Y., Domingues, L. G., Basso, L. S., Martinewski, A., Correia, C. S. C., Borges, V. F., Freitas, S., Braz, R., Anderson, L. O., Rocha, H., Grace, J., Phillips, O. L., and Lloyd, J.: Drought sensitivity of Amazonian carbon balance revealed by atmospheric measurements, *Nature*, 506, 76–80, 2014.
- Goulden, M. L., Miller, S. D., da Rocha, H. R., Menton, M. C., de Freitas, H. C., e Silva Figueira, A. M., and de Sousa, C. A. D.: Diel and seasonal patterns of tropical forest CO₂ exchange, *Ecol. Appl.*, 14, 42–54, 2004.
- 10 Griffin, D. M.: Water potential as a selective factor in the microbial ecology of soils, in: *Water Potential Relations in Soil Microbiology*, edited by: Parr, J., Gardner, W., and Elliott, L., *Soil Sci. Soc. Am.*, 141–151, 1981.
- Heinsch, F. A., Reeves, M., Votava, P., Kang, S., Milesi, C., Zhao, M., Glassy, J., Jolly, W. M., Loehman, R., Bowker, C. F., Kimball, J. S., Nemani, R. R., Running, S. W.: User's Guide: GPP and NPP (MOD17A2/A3) Products, NASA MODIS Land Algorithm, version 2.0, 1-57, 2003.
- 15 Hirsch, A. I., Little, W. S., Houghton, R. A., Scott, N. A., and White, J. D.: The net carbon flux due to deforestation and forest re-growth in the Brazilian Amazon: analysis using a process-based model, *Glob. Change Biol.*, 10, 908–924, 2004.
- Jobbágy, E. G. and Jackson, R. B.: The vertical distribution of soil organic carbon and its relation to climate and vegetation, *Ecol. Appl.*, 10, 423–436, 2000.
- Keller, M., Palace, M., and Hurtt, G.: Biomass estimation in the Tapajos National Forest, Brazil: examination of sampling and allometric uncertainties – new directions in tropical forest research, *For. Ecol. Manage.*, 154, 371–382, 2001.
- 25 Keller, M., Alencar, A., Asner, G. P., Braswell, B., Bustamante, M., Davidson, E., Feldpausch, T., Fernandes, E., Goulden, M., Kabat, P., Kruijt, B., Luizão, F., Miller, S., Markewitz, D., Nobre, A. D., Nobre, C. A., Priante Filho, N., da Rocha, H., Silva Dias, P., von Randow, C., and Vourlitis, G. L.: Ecology research in the Large-Scale Biosphere–Atmosphere Experiment in Amazonia: early results, *Ecol. Appl.*, 14, 3–16, 2004.
- 30 Keller, M., Varner, R., Dias, J. D., Silva, H., Crill, P., de Oliveira, R. C., and Asner, G. P.: Soil–atmosphere exchange of nitrous oxide, nitric oxide, methane, and carbon dioxide in logged and undisturbed forest in the Tapajos National Forest, Brazil, *Earth Interact.*, 9, 1–28, doi:10.1175/ei125.1, 2005.

Kim, Y., Knox, R. G., Longo, M., Medvigy, D., Hutyrá, L. R., Pyle, E. H., Wofsy, S. C., Bras, R. L., and Moorcroft, P. R.: Seasonal carbon dynamics and water fluxes in an Amazon rainforest, *Glob. Change Biol.*, 18, 1322–1334, 2012.

Kirschbaum, M. U. F.: The temperature dependence of soil organic matter decomposition, and the effect of global warming on soil organic C storage, *Soil Biol. Biochem.*, 27, 753–760, 1995.

Lee, J.-E., Oliveira, R. S., Dawson, T. E., and Fung, I.: Root functioning modifies seasonal climate, *P. Natl. Acad. Sci. USA*, 102, 17576–17581, 2005.

Malhi, Y., Wood, D., Baker, T. R., Wright, J., Phillips, O. L., Cochrane, T., Meir, P., Chave, J., Almeida, S., Arroyo, L., Higuchi, N., Killeen, T. J., Laurance, S. G., Laurance, W. F., Lewis, S. L., Monteagudo, A., Neill, D. A., Vargas, P. N., Pitman, N. C. A., Quesada, C. A., Salomao, R., Silva, J. N. M., Lezama, A. T., Terborgh, J., Martinez, R. V., and Vinceti, B.: The regional variation of aboveground live biomass in old-growth Amazonian forests, *Glob. Change Biol.*, 12, 1107–1138, 2006.

Malhi, Y., Aragão, L. E. O. C., Metcalfe, D. B., Paiva, R., Quesada, C. A., Almeida, S., Anderson, L., Brando, P., Chambers, J. Q., Da Costa, A. C. L., Hutyrá, L. R., Oliveira, P., PATIÑO, S., Pyle, E. H., Robertson, A. L., and Teixeira, L. M.: Comprehensive assessment of carbon productivity, allocation and storage in three Amazonian forests, *Glob. Change Biol.*, 15, 1255–1274, 2009a.

Malhi, Y., Aragão, L. E. O. C., Galbraith, D., Huntingford, C., Fisher, R., Zelazowski, P., Sitch, S., McSweeney, C., and Meir, P.: Exploring the likelihood and mechanism of a climate-change-induced dieback of the Amazon rainforest, *P. Natl. Acad. Sci. USA*, 106, 20610–20615, 2009b.

Melton, J. R. and Arora, V. K.: Sub-grid scale representation of vegetation in global land surface schemes: implications for estimation of the terrestrial carbon sink, *Biogeosciences*, 11, 1021–1036, doi:10.5194/bg-11-1021-2014, 2014.

Miller, S. D., Goulden, M. L., Menton, M. C., da Rocha, H. R., de Freitas, H. C., Figueira, A. M. e S., and Dias de Sousa, C. A.: Biometric and micrometeorological measurements of tropical forest carbon balance, *Ecol. Appl.*, 14, 114–126, 2004.

Miller, S. D., Goulden, M. L., and da Rocha, H. R.: The effect of canopy gaps on subcanopy ventilation and scalar fluxes in a tropical forest, *Agr. Forest Meteorol.*, 142, 25–34, 2007.

Miller, S., Goulden, M., and da Rocha, H. R.: LBA-ECO CD-04 Meteorological and Flux Data, km 83 Tower Site, Tapajos National Forest, Data Set, available at: <http://daac.ornl.gov>, Oak Ridge National Laboratory Distributed Active Archive Center, Oak Ridge, Tennessee, USA, doi:10.3334/ORNLDAAC/946, 2009.

- Miller, S. D., Goulden, M. L., Hutrya, L. R., Keller, M., Saleska, S. R., Wofsy, S. C., Figueira, A. M. S., da Rocha, H. R., and de Camargo, P. B.: Reduced impact logging minimally alters tropical rainforest carbon and energy exchange, *P. Natl. Acad. Sci. USA*, 108, 19431–19435, 2011.
- 5 Morton, D. C., Nagol, J., Carabajal, C. C., Rosette, J., Palace, M., Cook, B. D., Vermote, E. F., Harding, D. J., and North, P. R. J.: Amazon forests maintain consistent canopy structure and greenness during the dry season, *Nature*, 506, 221–224, doi:10.1038/nature13006, 2014.
- Nepstad, D. C., de Carvalho, C. R., Davidson, E. A., Jipp, P. H., Lefebvre, P. A., Negreiros, G. H., da Silva, E. D., Stone, T. A., Trumbore, S. E., and Vieira, S.: The role of deep roots in the hydrological and carbon cycles of Amazonian forests and pastures, *Nature*, 372, 666–669, 1994.
- 10 Oliveira, R. S., Dawson, T. E., Burgess, S. S. O., and Nepstad, D. C.: Hydraulic redistribution in three Amazonian trees, *Oecologia*, 145, 354–363, 2005.
- Orchard, V. A. and Cook, F.: Relationship between soil respiration and soil moisture, *Soil Biol. Biochem.*, 15, 447–453, 1983.
- Poulter, B., Heyder, U., and Cramer, W.: Modeling the sensitivity of the seasonal cycle of GPP to dynamic LAI and soil depths in tropical rainforests, *Ecosystems*, 12, 517–533, 2009.
- 15 Restrepo-Coupe, N., da Rocha, H. R., Hutrya, L. R., da Araujo, A. C., Borma, L. S., Christoffersen, B., Cabral, O. M. r., de Camargo, P. B., Cardoso, F. L., da Costa, A. C. L., Fitzjarrald, D. R., Goulden, M. L., Kruijt, B., Maia, J. M. f., Malhi, Y. S., Manzi, A. O., Miller, S. D., Nobre, A. D., von Randow, C., Sá, L. D. A., Sakai, R. K., Tota, J., Wofsy, S. C., Zanchi, F. B., and Saleska, S. R.: What drives the seasonality of photosynthesis across the Amazon basin?, A cross-site analysis of eddy flux tower measurements from the Brasil flux network, *Agr. Forest Meteorol.*, 182, 128–144, 2013.
- 20 Rohr, T., Manzoni, S., Feng, X., Menezes, R. S. C., and Porporato, A.: Effect of rainfall seasonality on carbon storage in tropical dry ecosystems, *J. Geophys. Res.-Biogeo.*, 118, 1–12, doi:10.1002/jgrg.20091, 2013.
- Rowland, L., Hill, T. C., Stahl, C., Siebicke, L., Burban, B., Zaragoza-Castells, J., Ponton, S., Bonal, D., Meir, P., and Williams, M.: Evidence for strong seasonality in the carbon storage and carbon use efficiency of an Amazonian forest, *Glob. Change Biol.*, 20, 979–991, 2014.
- 25 Saleska, S. R., Miller, S. D., Matross, D. M., Goulden, M. L., Wofsy, S. C., da Rocha, H. R., de Camargo, P. B., Crill, P., Daube, B. C., de Freitas, H. C., Hutrya, L., Keller, M., Kirchhoff, V., Menton, M., Munger, J. W., Pyle, E. H., Rice, A. H., and Silva, H.: Carbon in Amazon forests: unexpected seasonal fluxes and disturbance-induced losses, *Science*, 302, 1554–1557, 2003.

- Silver, W. L., Neff, J., McGroddy, M., Veldkamp, E., Keller, M., and Cosme, R.: Effects of soil texture on belowground carbon and nutrient storage in a lowland Amazonian Forest ecosystem, *Ecosystems*, 3, 193–209, 2000.
- Sombroek, W.: Spatial and temporal patterns of Amazon rainfall, *Ambio*, 30, 388–396, 2001.
- 5 Tang, J. and Zhuang, Q.: Equifinality in parameterization of process-based biogeochemistry models: A significant uncertainty source to the estimation of regional carbon dynamics, *Journal of Geophysical Research: Biogeosciences*, 113(G4), doi:10.1029/2008JG000757, 2008.
- Van Genuchten, M. T.: A closed form equation for predicting the hydraulic conductivity of unsaturated soils, *Soil Sci. Soc. Am. J.*, 44, 892–898, 1980.
- 10 Versegny, D. L.: CLASS – a Canadian land surface scheme for GCMs, I. Soil model, *Int. J. Climatol.*, 11, 111–133, 1991.
- Versegny, D.: CLASS – the Canadian Land Surface Scheme (Version 3.6), Technical Documentation, Tech. rep., Science and Technology Branch, Environment Canada, 2012.
- Von Randow, C., Zeri, M., Restrepo-Coupe, N., Muza, M. N., de Gonçalves, L. G. G., Costa, M. H.,
15 Araujo, A. C., Manzi, A. O., da Rocha, H. R., Saleska, S. R., Arain, M. A., Baker, I. T., Cesarato, B. P., Christoffersen, B., Ciais, P., Fisher, J. B., Galbraith, D., Guan, X., van den Hurk, B., Ichii, K., Imbuzeiro, H., Jain, A., Levine, N., Miguez-Macho, G., Poulter, B., Roberti, D. R., Sahoo, A., Schaefer, K., Shi, M., Tian, H., Verbeeck, H., and Yang, Z.-L.: Inter-annual variability of carbon and water fluxes in Amazonian forest, Cerrado and pasture sites, as simulated by terrestrial biosphere models, *Agr. Forest Meteorol.*, 182, 145–155, 2013.
- 20 Zeri, M., Sá, L. D. A., Manzi, A. O., Araújo, A. C., Aguiar, R. G., von Randow, C., Sampaio, G., Cardoso, F. L., and Nobre, C. A.: Variability of carbon and water fluxes following climate extremes over a tropical forest in southwestern Amazonia, *PLoS One*, 9, e88130, doi:0.1371/journal.pone.0088130, 2014.
- 25 Zhang, D., Hui, D., Luo, Y. and Zhou, G.: Rates of litter decomposition in terrestrial ecosystems: global patterns and controlling factors, *Journal of Plant Ecology*, 1(2), 85–93, 2008.
- Zhao, M., Heinsch, F. A., Nemani, R. R., and Running, S. W.: Improvements of the MODIS terrestrial gross and net primary production global data set, *Remote Sens. Environ.*, 95, 164–176, 2005.
- Zhao, M. and Running, S. W.: Sensitivity of Moderate Resolution Imaging Spectroradiometer (MODIS) terrestrial primary production to the accuracy of meteorological reanalyses, *J. Geophys. Res.*, 111, G01002, doi:10.1029/2004JG000004, 2006.
- 30 Zobler, L.: A World Soil File for Global Climate Modelling, NASA Technical Memorandum 87802, NASA Goddard Institute for Space Studies, New York, USA, 1986.

Table 1. Simulated primary carbon pools and vegetation state from CLASS-CTEM compared to site-level observations for the Tapajós River National Forest site (K83) and Jarú Reserve (RJA). LAI is leaf area index.

Variable	Site	CLASS-CTEM	Observed
LAI ($\text{m}^2 \text{m}^{-2}$)	K83	5.0	4.9 (Doughty and Goulden, 2008)
	RJA	6.1	5.5 (Andreae et al., 2002)
Total vegetation biomass (kg C m^{-2})	K83	14.5	18.6 ± 10.3 ^a (Keller et al., 2001)
	RJA	17.3	–
Aboveground vegetation biomass (kg C m^{-2})	K83	12.5	$13.2^b \pm 6.8$ (Miller et al., 2004; Keller et al., 2001), 15.6 (Saleska et al., 2003)
	RJA	14.9	–
Belowground vegetation biomass (kg C m^{-2})	K83	2.0	3.2 ± 2.3 (Keller et al., 2001), 3.6 (Silver et al., 2000)
	RJA	2.4	–
Soil carbon (kg C m^{-2})	K83	13.0	10.1 ± 0.4 – 14.2 ± 0.7 ^c (de Carvalho et al., 2003)
	RJA	11.5	–
Litter (kg C m^{-2})	K83	0.8	0.3^d (Hirsch et al., 2004)
	RJA	0.6	–

^a Value includes trees, vines, and epiphytes.

^b Calculated from Table 4 of Keller et al. (2001). Value does not include vines and epiphytes. Converted from organic matter to carbon assuming 50 % carbon by mass in dry organic matter.

^c Measurements of carbon in the mineral-organic matter down to a depth of 2.1 m. The lower value is from the more common clay oxisols. The CLASS-CTEM model was run assuming a soil texture of the clay oxisols following de Gonçalves et al. (2013).

^d Litterfall estimate includes only leaves. Value is from A.M.S. Figueira (unpublished data) as reported in Hirsch et al. (2004).

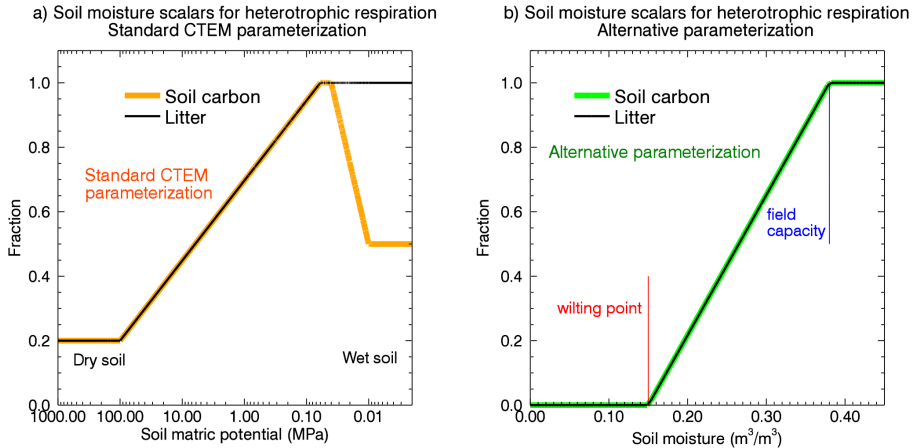


Figure 1. Soil moisture scalars for modelling the effect of soil moisture on heterotrophic respiration from litter and soil carbon pools. **(a)** The standard parameterization used in CLASS-CTEM. **(b)** The alternative parameterization as discussed in Sect. 2.2.

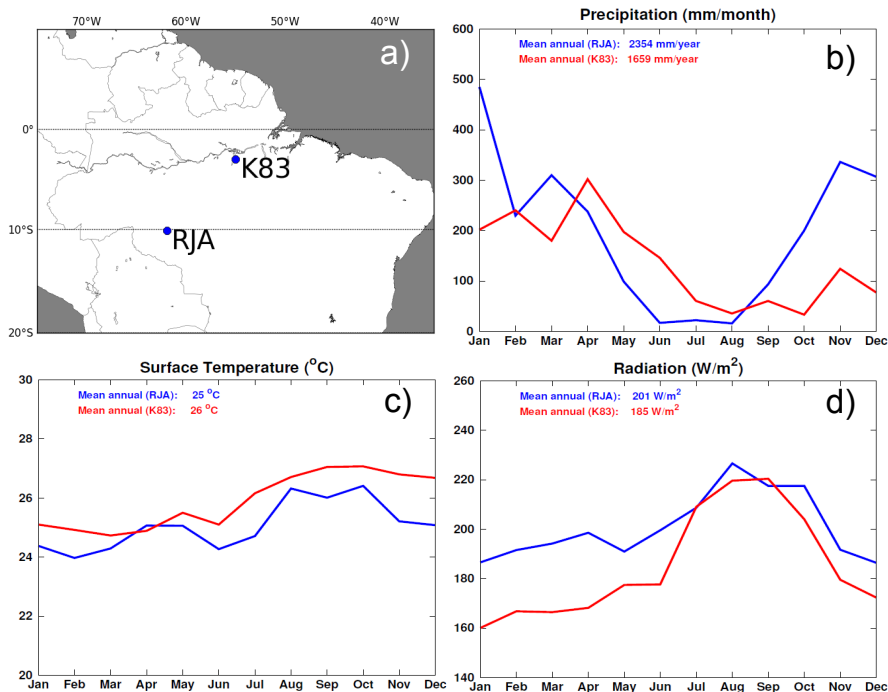


Figure 2. (a) Location of the K83 (Tapajós River National Forest site 83 km) and RJA (Jarú Reserve) sites. Observed climate used for forcing CLASS-CTEM over the 2001–2003 period for K83 and the 2000–2002 period for RJA including mean monthly (b) precipitation, (c) surface air temperature, and (d) downward flux of solar radiation.

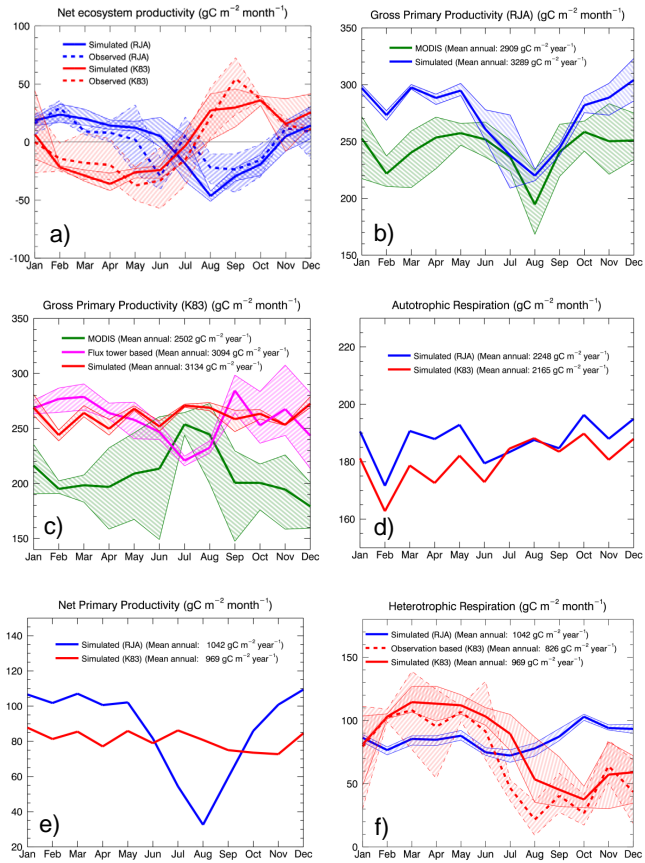


Figure 3. Caption on next page.

Figure 3. (a) Observed and CLASS-CTEM simulated mean monthly NEP at RJA (Jarú Reserve) and K83 (Tapajós River National Forest site 83 km). All simulations used the standard CLASS-CTEM heterotrophic respiration parameterization (see Section 2.2). Positive NEP values indicate carbon uptake by the land surface from the atmosphere; negative values the opposite. All values are presented as anomalies to allow easier comparison of the seasonal patterns. (b) RJA mean monthly GPP as simulated by CLASS-CTEM and estimated by MODIS (Zhao et al., 2005). (c) K83 mean monthly GPP from MODIS, CLASS-CTEM, and a flux-tower based estimate from Miller et al. (2009). CLASS-CTEM simulated mean monthly (d) autotrophic respiration, (e) net primary productivity, and (f) heterotrophic respiration for RJA and K83. Panel (f) also shows an observation-based estimate for heterotrophic respiration at the K83 site that is derived by subtracting a constant annual mean simulated autotrophic respiration of $180 \text{ g C m}^{-2} \text{ month}^{-1}$ from an observation-based estimate of ecosystem respiration (Miller et al., 2009) as explained in Sect. 3.2. Shaded regions in panels (a) through (c) denote the range over a given month of the three years of climate data used.

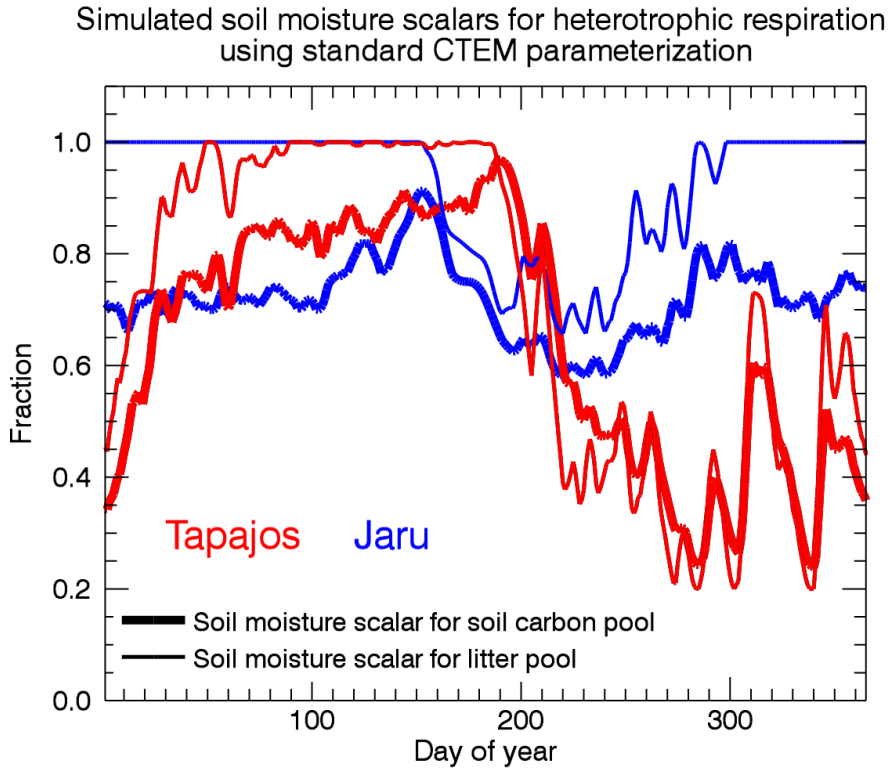


Figure 4. Daily mean simulated heterotrophic respiration soil moisture scalar for K83 (Tapajós 83 km) and RJA (Jarú Reserve) for litter ($f_L(\psi)$) and soil carbon ($f_S(\psi)$) averaged across three years (2001–2003 for K83 and 2000–2002 for RJA).

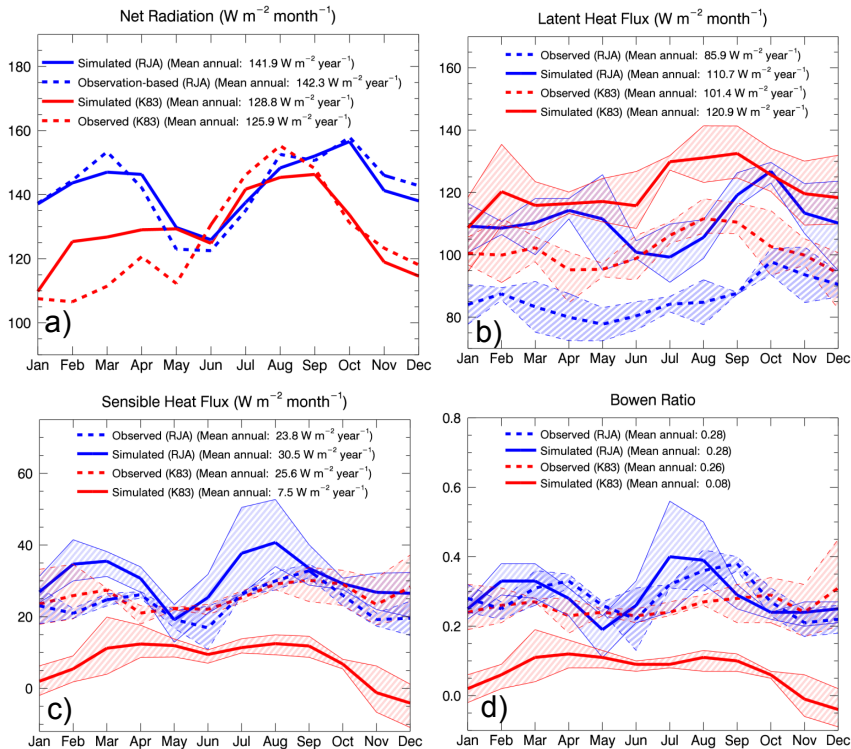


Figure 5. Simulated and eddy covariance based estimates of energy fluxes and the Bowen ratio at the K83 (Tapajós 83 km) and RJA (Jarú Reserve) sites. **(a)** Net radiation, **(b)** latent heat fluxes, **(c)** sensible heat fluxes, **(d)** Bowen ratio. Shaded regions in panels **(b)** through **(d)** denote the range over a given month of the three years of climate data used.

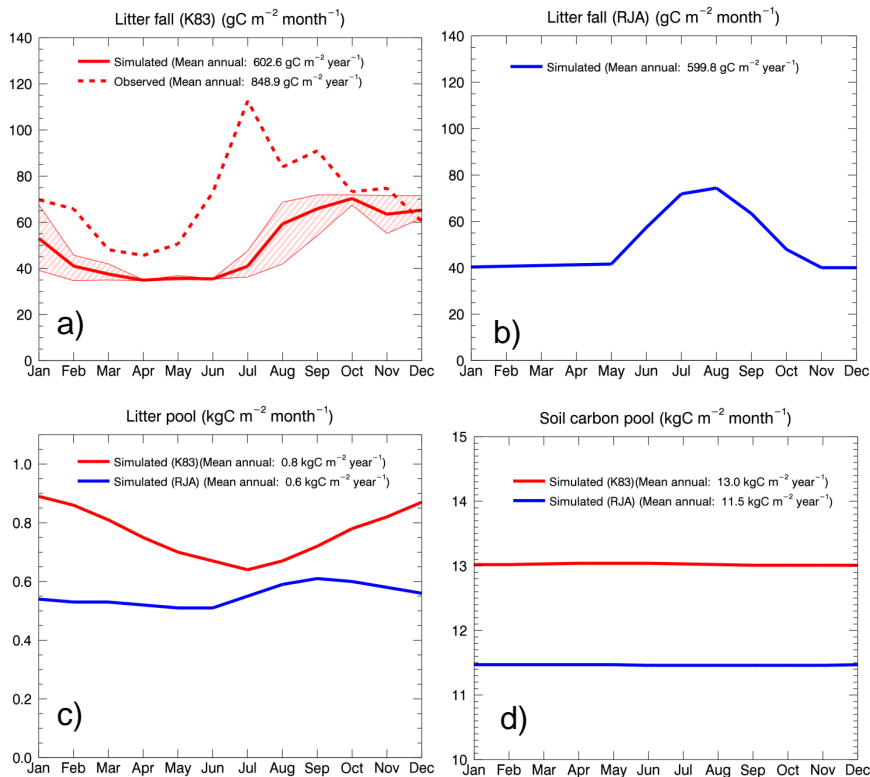


Figure 6. Comparison of simulated and observation-based litter fall rates (**a** and **b**) at K83 (Tapajós 83 km) and RJA (Jarú Reserve) sites. (**c**) and (**d**) show simulated litter and soil carbon pool sizes at the two sites. The shaded region in (**a**) denotes the range over a given month of the three years of climate data used. The observation-based estimate (Goulden et al., 2004) at K83 covers only one year (2002).

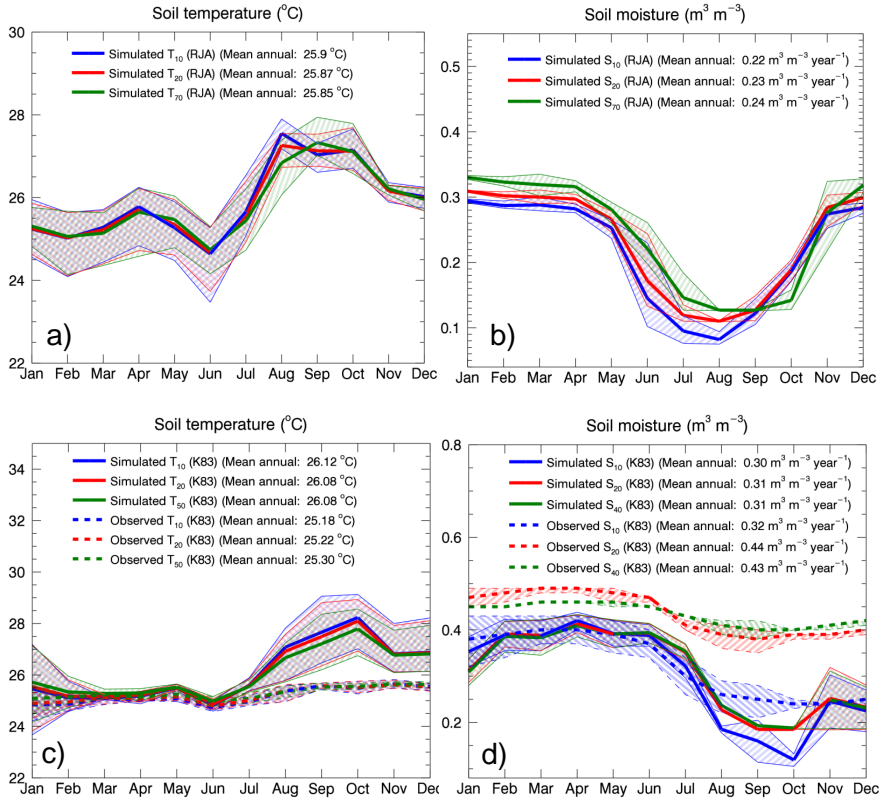


Figure 7. Simulated soil temperature (**a**, **c**) and soil moisture (**b**, **d**) at the RJA (Jarú Reserve) and K83 (Tapajós 83 km) sites. Observation-based soil temperature and moisture at K83 are also shown in (**c**) and (**d**) for soil depths given in cm.

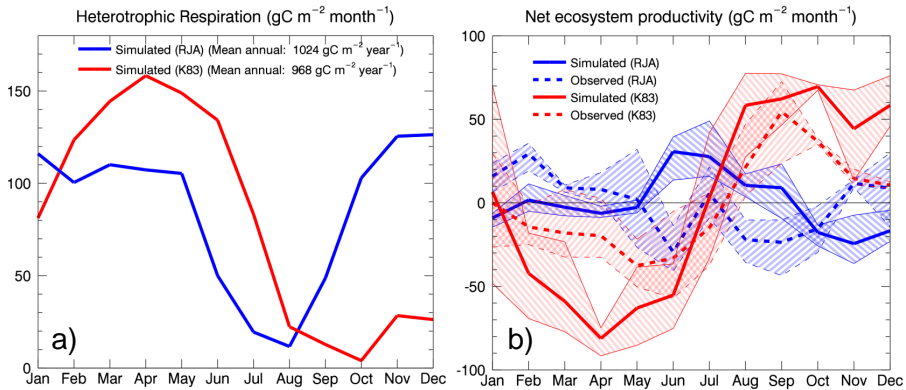


Figure 8. (a) Simulated heterotrophic respiration at the RJA and K83 sites when using the alternative parameterization to model the response of heterotrophic respiration to soil moisture (Sect. 2.2). (b) The resulting simulated NEP at the two sites is compared with observation-based estimates. The shaded range in (b) corresponds to the range over the three years.