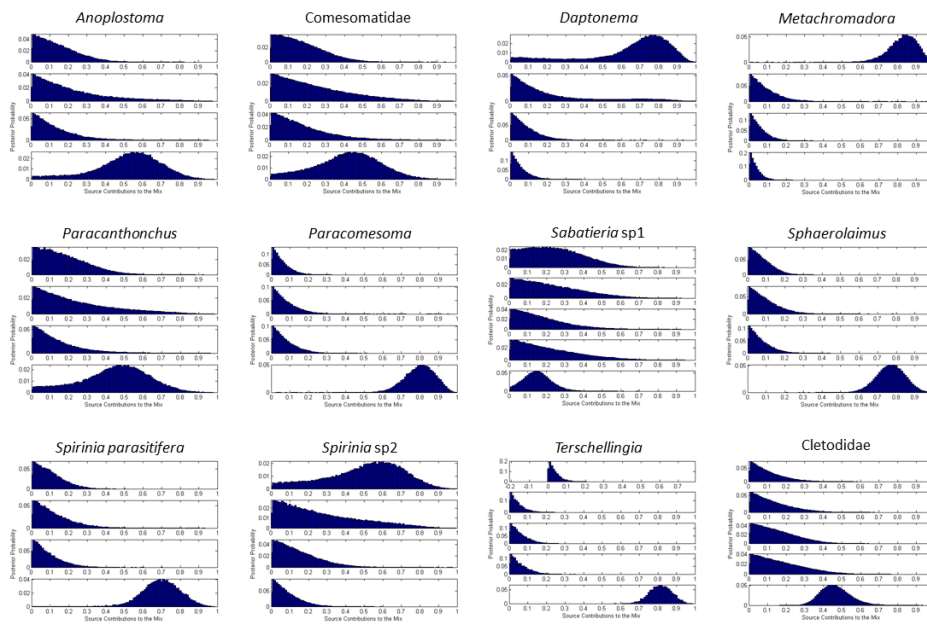


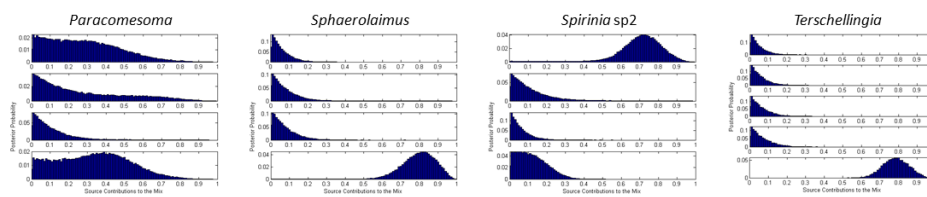
1 **ESM.** Probability histograms of the proportional contribution of each resource to the carbon requirements of  
2 meiofauna taxa in seagrass beds and their adjacent bare sediments, as computed by the isotope mixing  
3 model MixSIR. The resources used are in order: seagrass detritus, epiphytes, *MPB* and *SPOM*, from above  
4 to below, when four resources are presented, and when five, chemoautotrophic bacteria is the fifth.

## Proportional contribution of resources

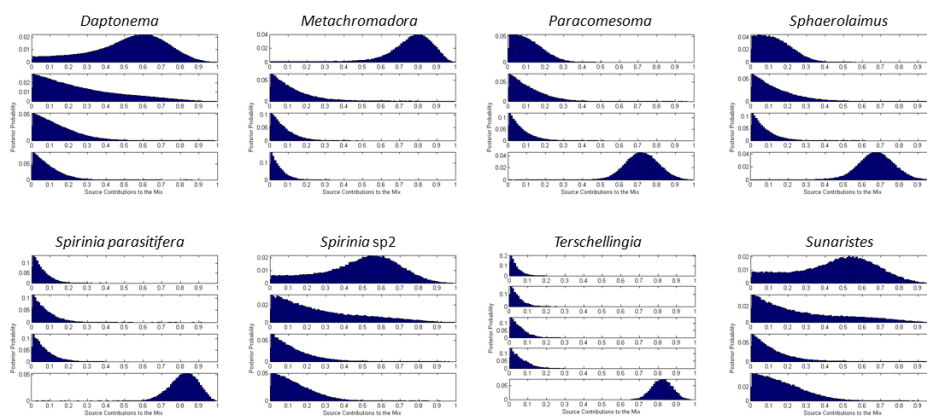
### Seagrass beds (upper 2 cm)



### Seagrass beds (deeper sediments: 4-6 cm)



### Bare sediment (upper 2 cm)



### Bare sediment (deeper sediments: 4-6 cm)

