

BGD

11, 1355–1382, 2014

Seasonal contribution of organic matter to the Baltic Sea

H. E. Reader et al.

Seasonal contribution of terrestrial organic matter and biological oxygen demand to the Baltic Sea from three contrasting river catchments

H. E. Reader¹, C. A. Stedmon², and E. S. Kritzberg¹

¹Department of Biology/Aquatic Ecology, Lund University, Sölvegatan 37, 223 62 Lund, Sweden

²National Institute for Aquatic Resources, Technical University of Denmark, Kavalergården 6, 2920 Charlottenlund, Denmark

Received: 21 December 2013 – Accepted: 8 January 2014 – Published: 22 January 2014

Correspondence to: H. E. Reader (heather.reader@biol.lu.se)

Published by Copernicus Publications on behalf of the European Geosciences Union.

Title Page

Abstract

Introduction

Conclusions

References

Tables

Figures



Back

Close

Full Screen / Esc

Printer-friendly Version

Interactive Discussion

Abstract

To examine the potential influence of terrestrially derived DOM on the Baltic Sea, a year-long study of dissolved organic matter (DOM) was performed in three river catchments in Sweden. One catchment drains into the Bothnian Sea, while two southern catchments drain into the Baltic Proper. Dissolved organic carbon (DOC) concentrations were positively correlated with discharge from forested catchments over the year and while the overall concentrations of DOC were several times higher in the southern two catchments, annual loading of DOC was on the same order for all three catchments, due to differences in discharge. Biological oxygen demand (BOD) was used as a proxy for the lability of carbon in the system. The range of BOD values was similar for all three catchments, however, the ratio of BOD to DOC (an indication of the labile fraction) in Ume älv was four times higher than in the southern two catchments. Total annual BOD loading to the Baltic Sea was twice as high in the northern catchment. Lower winter temperatures and preservation of organic matter in the northern catchment combined with an intense spring flood help to explain the higher concentrations of labile carbon in the northern catchment. Lower lability of DOM as well as higher colour in the southern catchments suggest that wetlands (i.e. peat bogs) may be the dominant source of DOM in these catchments, particularly in periods of low flow. With climate change expected to increase precipitation events and temperatures across the region, the supply and quality of DOM delivered to the Baltic Sea can also be expected to change. Our results indicate that DOM supply will be more stable throughout the year, and potentially have a lower bioavailability.

1 Introduction

In the boreal regions freshwater dissolved organic matter (DOM) concentrations are increasing. This widespread phenomenon of increasing dissolved organic carbon (DOC) and as well water colour, or chromophoric dissolved organic matter (CDOM), is at

BGD

11, 1355–1382, 2014

Seasonal contribution of organic matter to the Baltic Sea

H. E. Reader et al.

Title Page

Abstract

Introduction

Conclusions

References

Tables

Figures

⏪

⏩

◀

▶

Back

Close

Full Screen / Esc

Printer-friendly Version

Interactive Discussion



where increasing freshwater input has already been shown to be driving an ecosystem shift from net autotrophy to net heterotrophy (Wikner and Andersson, 2012).

The reactivity of DOM is controlled by its chemical characteristics, or “quality”. The quality of DOM is not readily defined but there are several indicators that are often used to describe DOM. The slope of the chromophoric DOM (i.e. CDOM) absorption spectrum can be used as an indicator of carbon quality, specifically, the slope of the spectrum in the ultraviolet (i.e. 275–295 nm) has been shown to be an indicator of the molecular size of DOM (Helms et al., 2008). This can be a useful indicator of DOM quality as larger molecules are often thought to be more biologically reactive (Amon and Benner, 1996, 1994). In addition, the carbon specific ultraviolet absorption ($SUVA_{254}$) is an indicator of the aromatic character of the DOM, with a higher $SUVA_{254}$ value indicating that the DOM has a higher aromatic content (Weishaar et al., 2003), and is likely to be less biologically available (Perdue, 1998). The drawback of these quality indicators is that they characterise only a fraction of the DOM pool. To assess the actual effect of DOM on oxygen conditions, microbial assays such as simple biological oxygen demand (BOD) incubations can be used to determine the bulk reactivity of the DOM with respect to the microbial community. While there is a range of efficiencies with which the microbial community can access DOM (i.e. respiratory quotient RQ, Berggren et al., 2012), for the most part these boreal freshwater RQs fall within a relatively small range (0.5–2) and as such BOD can be used as an effective proxy for the biological reactivity or lability of the DOM (Miller et al., 2002; Asmala et al., 2013).

An extensive system of water quality and water flow monitoring exists in Sweden, making it possible to observe how flow (Erlandsson et al., 2008) and organic matter quality indicators (Kritzberg and Ekstrom, 2012) have changed over time. However, dynamics of biological reactivity require different assessments, such as BOD, which are more time consuming and therefore rarely incorporated into long-term monitoring programs. In this paper we present a year-long study of the DOM in three Swedish rivers flowing into the Baltic Sea. The Baltic Sea is a semi-enclosed basin which is heavily influenced by runoff from the surrounding terrestrial regions. In addition to hav-

BGD

11, 1355–1382, 2014

Seasonal contribution of organic matter to the Baltic Sea

H. E. Reader et al.

[Title Page](#)

[Abstract](#)

[Introduction](#)

[Conclusions](#)

[References](#)

[Tables](#)

[Figures](#)

[⏪](#)

[⏩](#)

[◀](#)

[▶](#)

[Back](#)

[Close](#)

[Full Screen / Esc](#)

[Printer-friendly Version](#)

[Interactive Discussion](#)



Seasonal contribution of organic matter to the Baltic Sea

H. E. Reader et al.

Title Page

Abstract

Introduction

Conclusions

References

Tables

Figures

⏪

⏩

◀

▶

Back

Close

Full Screen / Esc

Printer-friendly Version

Interactive Discussion

ing a freshening effect on the Baltic, the many rivers flowing into the Baltic Sea input a large amount of nutrients, making the Baltic Sea the world's largest hypoxic basin, with permanent anoxia in deep bottom waters, as well as periodic hypoxia shallower coastal regions (Conley et al., 2011). The rivers flowing into the Baltic also supply organic matter and as a consequence up to 86 % of the DOM in the Baltic Sea is thought to be terrestrially derived (Alling et al., 2008; Deutsch et al., 2012). The reactivity of this terrestrial DOM is poorly understood and as a result little is known about its contribution to hypoxic conditions in the Baltic Sea. In this study we assess the reactivity of terrestrial DOM supplied by three contrasting Swedish rivers, occupying distinct climatic zones. The aim is to identify variables that influence the delivery of reactive DOM to the Baltic Sea and can contribute to coastal hypoxia.

2 Methods

2.1 Sampling and measurements

A year-long study of riverine organic matter was undertaken at 3 catchments in Sweden (Fig. 1, Table 1). The Ume river catchment is covered by 7 % peatlands and 42 % forest, and occupies a subarctic zone, with winter temperatures below freezing. Ume catchment can be roughly divided into subcatchments, Upper Ume and Vindeln. The sampling site for Ume (Fig. 1, Table 1) is downstream of the confluence of the two major subcatchments. Upper Ume is highly regulated with several hydro dams along its length, while Vindeln is unregulated and more forested. Ume river is the most northern catchment and flows into the Bothnian Sea. The Emån and Lyckeby rivers occupy a more temperate climate zone with mean winter temperatures around 0 °C, and 69 % and 72 % forest cover, respectively, as well as lower peatland cover, 1 % and 2 % respectively. Both Emån and Lyckeby rivers drain into the Baltic Proper.

Monthly samples of river water were collected in 2 L polycarbonate bottles (Nalgene) and were stored on ice in the dark until return to the laboratory (< 8 h). Upon return

Seasonal contribution of organic matter to the Baltic Sea

H. E. Reader et al.

Title Page

Abstract

Introduction

Conclusions

References

Tables

Figures

⏪

⏩

◀

▶

Back

Close

Full Screen / Esc

Printer-friendly Version

Interactive Discussion

to the laboratory, samples for DOC and CDOM measurements were pre-filtered using
ashed (450 °C, 4 h) GF/F filters (Whatman), and then filtered through 0.2 µm polycar-
bonate filters (Millipore). DOC was measured on a Shimadzu TOC V-CPN in TC mode.
The instrument was calibrated daily with a Na₂CO₃ for IC analysis and potassium hy-
drogen phthalate for TC analysis. CDOM absorbance was measured in a 1 cm quartz
cell on a Beckman Coulter D800 from 200 nm to 800 nm.

Biodegradable dissolved organic carbon was assessed as two-week biological oxy-
gen demand measurements (BOD). Samples were filtered through ashed GF/F filters
directly into 60 mL Winkler bottles which were sealed without headspace. Three bot-
tles were fixed immediately with Winkler reagents, and three more were incubated in
the dark at 20.5 °C for two weeks. Samples were then titrated using a Mettler–Toledo
titrator according to the Winkler method.

Flow data for the sampling period was obtained from the Swedish Meteorological and
Hydrological Institute's Vattenweb (SMHI, www.smhi.se/vattenweb), who operate flow
meters at the points of sampling. Flow data for Krycklan catchment (a low altitude sub-
catchment of Vindeln catchment) was obtained from The Krycklan Catchment Study
(Laudon et al., 2013). Catchment areas and land cover data were obtained from the
Swedish Statistical Board (http://www.scb.se). Climate data was obtained from SMHI
(http://www.smhi.se/klimatdata).

2.2 Calculations

CDOM was measured on a Beckman Coulter DU-800 spectrophotometer in a 1 cm
quartz cuvette using milli-Q water as a reference and a blank. The absorption co-
efficient was calculated according to the equation $a(\lambda) = A \cdot 2.303 / l$, where A is the
measured absorbance, l is the pathlength of the cell in meters and 2.303 converts
from decadal units to Napierian units. Spectral slope was estimated using a non-linear
regression routine in MATLAB, across 275–295 nm (i.e., $S_{275-295}$), according to the cal-
culations of Helms et al. (2008) and was used as an indicator of the relative molecular
size of the DOM. Specific ultraviolet absorbance (SUVA, m² g⁻¹ C), was calculated

as the ratio between decadal absorbance at 254 nm (m^{-1}) and total organic carbon (mgL^{-1} ; Weishaar et al., 2003). It is used as an indicator of the aromatic content of the DOC.

Monthly loadings were calculated by summing the total flow for the month and multiplying by the monthly measurements of DOC, CDOM, and BOD. Annual loadings are the sums of the 12 monthly loadings. To account for months where there is missing data, a linear extrapolation between the two bordering months was used to obtain a DOM value, and a monthly loading was obtained from that. This data was used solely for the calculation of the yearly loading and not the assessment of yearly patterns. Pearson correlations were used to determine co-variance of different organic matter characteristics and flow. All calculations were performed in Matlab.

3 Results

3.1 Hydrographs

Ume catchment is the largest of the three study sites, and the flow was an order of magnitude higher than in either of the two southern catchments. The hydrograph (grey bars, Figs. 2 and 3) has two distinct peaks, one in June during the spring flood, and the other in October. In Emån catchment, the hydrograph also shows two peaks. The first was in January during the winter peak precipitation season and the second in July during an anomalous precipitation event, which caused widespread flooding throughout the catchment. In Lyckeby, flow peaked in the winter months, during the normal period of high precipitation. The summer months in Lyckeby were characterised by low precipitation and consequently low flow.

Seasonal contribution of organic matter to the Baltic Sea

H. E. Reader et al.

[Title Page](#)

[Abstract](#)

[Introduction](#)

[Conclusions](#)

[References](#)

[Tables](#)

[Figures](#)

[⏪](#)

[⏩](#)

[◀](#)

[▶](#)

[Back](#)

[Close](#)

[Full Screen / Esc](#)

[Printer-friendly Version](#)

[Interactive Discussion](#)



3.2 DOC and CDOM

Dissolved organic carbon (DOC) was similar in the two southern rivers (Table 2), while the mean concentration of DOC in Ume river was lower. CDOM (measured as a_{375}) correlated strongly with DOC in all three rivers (Table 3). Monthly variability of DOC and CDOM showed two distinct peaks in Ume river, one the month before the spring flood, and another during autumn peak flow in October. While the first peak in carbon appeared before the spring flood, it coincided with the spring flood in the lower forested parts of the catchment. DOC was correlated not with flow on Ume river after the confluence of the two subcatchments, but rather with flow in the forested lower catchment (Table 3). In Emån river, carbon characteristics (i.e. DOC and CDOM) were driven by flow in the spring and summer months, especially during the July flooding event, but concentrations of DOC and CDOM were steady throughout the winter peak flow (December–February, Fig. 2). However, overall DOC was strongly correlated with flow in this river (Table 3). In Lyckeby river, flow was extremely low over the summer months, but both DOC and CDOM decreased slowly over the low flow period, reaching their minimum in October and November, before rising again over the winter months (Fig. 2). Because of this, while DOC was still correlated with flow in Lyckeby catchment, it was less significant than in the other two catchments (Table 3).

3.3 DOM quality indicators

Quality characteristics of the organic matter (spectral slope, $SUVA_{254}$) can be found in Table 2. Neither spectral slope nor $SUVA_{254}$ held any explanatory value when considering DOC or BOD variability. The total range of BOD was similar across the three catchments (Table 2, Fig. 3a) with values ranging between 10 and $70 \mu\text{molL}^{-1} \text{O}_2$. In Lyckeby, BOD was significantly correlated to flow, while in the other two catchments it was not (Table 3). However, BOD was clearly higher during the spring flood in Ume (Fig. 3a). BOD was not correlated to DOC in either Ume or Emån, but was weakly correlated in Lyckeby (Table 3). Despite the fact that the absolute values of BOD were

BGD

11, 1355–1382, 2014

Seasonal contribution of organic matter to the Baltic Sea

H. E. Reader et al.

Title Page

Abstract

Introduction

Conclusions

References

Tables

Figures

◀

▶

◀

▶

Back

Close

Full Screen / Esc

Printer-friendly Version

Interactive Discussion



4 Discussion

The Baltic Sea is a strongly terrestrially influenced system and the riverine delivery of reactive DOM has the potential to exacerbate already oxygen stressed conditions through the consumption of oxygen by microbial DOM degradation. While the delivery of DOM to the Baltic from surrounding landmasses has been investigated in the past (Deutsch et al., 2012; Weyhenmeyer et al., 2012), the loadings of reactive material have not been explicitly studied before. Swedish rivers deliver DOM year round to the Baltic, however the reactivity of that DOM is not necessarily the same through the year and it is the delivery of reactive material that has the primary impact on the marine environment. Thus, investigating the loadings of reactive material to the Baltic Sea is an informative way to understand the impact of riverine DOM on the Baltic Sea ecosystem. The southern two catchments have similar DOC and BOD areal annual loadings to the Baltic Sea, but have different monthly patterns of loadings, due to differing flow hydrographs and precipitation in the catchments, particularly in summer. While Lyckeby catchment experienced little rainfall and low flow in the summer, Emån catchment experienced high summer precipitation leading to flooding throughout the catchment in July resulting in a more even delivery of reactive material throughout the year. The northern catchment, with its colder winters, experiences a strong spring flood, and DOC concentrations correlate with flow in the lower forested parts of the catchment, while BOD concentrations correlate better with flow on the entire catchment. Additionally, the overall areal annual loading of BOD is twice as high in the northern catchment than in the southern catchments. Higher loading of reactive material to the Bothnian Sea suggests that this region is more influenced by the terrestrial system than the more southern Baltic Proper.

4.1 Differences in reactivity between rivers and over seasons

In the southern two rivers, the overall bioavailability, as a fraction of the total DOC, is low, with only $\sim 2\%$ of the DOC being bioavailable on this time scale in any given

BGD

11, 1355–1382, 2014

Seasonal contribution of organic matter to the Baltic Sea

H. E. Reader et al.

Title Page

Abstract

Introduction

Conclusions

References

Tables

Figures

⏪

⏩

◀

▶

Back

Close

Full Screen / Esc

Printer-friendly Version

Interactive Discussion



Seasonal contribution of organic matter to the Baltic Sea

H. E. Reader et al.

[Title Page](#)

[Abstract](#)

[Introduction](#)

[Conclusions](#)

[References](#)

[Tables](#)

[Figures](#)

[⏪](#)

[⏩](#)

[◀](#)

[▶](#)

[Back](#)

[Close](#)

[Full Screen / Esc](#)

[Printer-friendly Version](#)

[Interactive Discussion](#)

month. The moderate annual temperatures in these two catchments can allow for substantial microbial processing along the transit to the river mouth, leading to low bioavailability at the river mouth sampling point. In a similar study of three rivers in Finland, Asmala et al. (2013) also found relatively low bioavailability for a similar forested catchment (mean of 7.91 %), with a lack of seasonality much like in Emån and Lyckeby. During the dry summer months in Lyckeby catchment, high residual DOC and CDOM concentrations in the river despite low flow are suggestive of wetland draining being the major source of water in the river, in those periods rather than overland flow and flow through superficial soil layers that are more likely during precipitation events (Bishop et al., 1993).

The differences between these southern rivers and the northern river, Ume älv, are clear from the annual areal loadings of DOM (Table 3). While DOC areal loadings are similar for all three rivers, the loading of BOD is twice as high in the northern river as in the southern two rivers. This is despite the fact that the DOC concentrations in Ume älv are considerably lower, and reflects the higher range of BOD/DOC; i.e. the bioavailability of the DOC.

The mean annual temperature ($\sim 1^{\circ}\text{C}$, Table 1), and significantly, the mean winter temperature (-10°C) in Ume älv are lower than in the southern two catchments ($\sim 7^{\circ}\text{C}$ annual and $\sim 0^{\circ}\text{C}$ winter, Table 1). The low winter temperatures can be a driver for winter preservation of organic matter in the catchment, through lowering of metabolic rates during cold winter months and lower flow rates on rivers and through soils. Additionally, Haei et al. (2012) showed that bioavailability of DOM increased with increasing soil frost conditions in winter (i.e. lower winter temperatures lead to more labile DOM release from soils); this was attributed not directly to lowered metabolism during the winter but rather frost-induced destruction of fine root structures and cell lysis releasing labile organic matter upon thawing. These processes combined effectively store reactive DOM in the catchment until the spring melt (June in Ume älv), when warmer temperatures cause snow melt and large increases in soil water and consequently discharge in the catchment.

4.2 Loadings of total organic carbon vs. labile organic carbon

Loadings of DOC are often used to assess the impact of terrestrial DOM on marine systems (Asmala et al., 2012; Stedmon et al., 2011; Algesten et al., 2006): however, the bioavailability of DOM varies by orders of magnitude (del Giorgio and Davis, 2003), making it hard to predict how terrestrial DOM affects the receiving system. For the Baltic Sea, bacterial degradation of terrestrial DOM is estimated to consume in excess of one million tonnes of dissolved O₂ annually (Helcom, 2004). Yet, little is known about the environmental and seasonal controls of DOM reactivity, which makes it hard to predict how DOM-driven O₂ consumption and CO₂ release will respond to environmental change. Generally, loadings of DOC in the studied rivers are driven by flow on the rivers, with the exception of May and June in Ume älv, where the lower forested areas experience a spring flood with high DOC the month before the highest flow on the entire river, leading to higher loadings a month earlier than peak flow. While BOD loadings are influenced by flow, the general pattern followed by DOC is not seen in the BOD loadings, except in Lyckeby catchment, where the flow regime was extremely low in the summer months. In the other two rivers, the BOD loading regime was more complicated than DOC. In Ume älv the difference between DOC and BOD is most striking in how the vast majority of BOD loading occurs in June, and while there is an increase in DOC loading in the fall, the BOD does not experience the same increase. The difference in absolute reactivity especially in the northern catchment means that reactivity loadings can differ considerably from the DOC loadings. Thus it is important to consider the reactivity loadings when examining the present and future impact of DOM on coastal systems.

In Ume älv, the winter storage and flushing of reactive DOM during the spring flood is further supported by the loadings of BOD over the year. Looking at the loadings for the two spring flood months (May and June for the lower and upper parts of Ume älv catchment respectively), it can be seen that almost 40 % of the annual DOC loading and roughly 50 % of the total BOD loading to the northern Baltic occurs at that time,

BGD

11, 1355–1382, 2014

Seasonal contribution of organic matter to the Baltic Sea

H. E. Reader et al.

[Title Page](#)

[Abstract](#)

[Introduction](#)

[Conclusions](#)

[References](#)

[Tables](#)

[Figures](#)

[⏪](#)

[⏩](#)

[◀](#)

[▶](#)

[Back](#)

[Close](#)

[Full Screen / Esc](#)

[Printer-friendly Version](#)

[Interactive Discussion](#)



Seasonal contribution of organic matter to the Baltic Sea

H. E. Reader et al.

Title Page

Abstract

Introduction

Conclusions

References

Tables

Figures

⏪

⏩

◀

▶

Back

Close

Full Screen / Esc

Printer-friendly Version

Interactive Discussion

while the rest of the months are relatively insignificant. This striking pattern is driven by the large spring flood on the river, but also by increasing DOC and bioavailability at that time, i.e. synchronicity of these two organic matter characteristics and flow. This large pulse of organic matter into the northern Baltic (i.e. Bothnian Sea) occurs at a time when the coastal waters are also beginning to warm, meaning that the microbial community in the coastal Bothnian Sea is able to take advantage of this, potentially shifting to a heterotrophic system. Indeed, the increasing freshwater input to the northern Baltic Sea has been shown to shift the ecosystem to net heterotrophy (Wikner and Andersson, 2012). Many coastal systems and estuaries are heterotrophic in nature, on a seasonal level (Cai, 2011), and this appears to be the case in the Bothnian Sea as well (Algesten et al., 2004), likely due to such a large pulse of labile material in a short period of time.

Loadings of DOM (both DOC and BOD) are driven largely by flow in Lyckeby river, which experienced a dry summer and moderate precipitation in the winter. Similarly, but less extreme than in Ume älv, Lyckeby river experiences nearly 40 % of BOD loading to the Baltic Proper during the high flow month of January, with no other month providing more than 20 % of the year's loading. While the mean annual temperature here is above 0 °C, January remains one of the coldest months of the year (mean winter temperature 0.17 °C), and as such, microbial activity in the coastal ocean is likely to be slower, leading to slow processing of the labile fraction of organic matter when it does reach the Baltic Proper and consequently export of labile organic matter further out from the coastal zone. If labile organic matter is microbially processed at a slower rate during the large pulse in January, then it is less likely for this DOM to change the tendency of the Baltic Proper from autotrophy, than it is in the more northern Bothnian Sea.

The Emån catchment, which experienced an anomalous flooding event in July, shows less variability in the loadings over the year than either of the two other rivers, and while the loadings of DOC are driven by flow, the loadings of BOD are more evenly distributed across the months. In fact, no one month delivers more than 25 % of the total DOC and no month delivers more than 20 % of the total BOD for the year.

4.3 Climate and future loadings

In the future, northern Europe and especially Scandinavia is expected to see warmer and wetter weather. Sweden is predicted to see a large increase in rainfall (on the order of 21 % year round) and warmer winters (Meier, 2006). While all three catchments are expected to experience increase precipitation year round, the seasonal pattern of this precipitation is expected to differ between the northern catchment and the southern catchments. In Ume älv, the increase in precipitation is expected to be similar year round, while in the southern two catchments, the increase in precipitation is expected to be twice as high in the winter and spring months as during the rest of the year (Swedish Meteorological and Hydrological Institute Climate Predictions, <http://www.smhi.se/klimatdata/klimatscenarioer/Framtidens-klimat>). In Emån catchment, the anomalous precipitation event in July, which led to widespread flooding in the catchment and an increase in flow on the river for that month effectively “flattened” the hydrograph for that year. This was in stark contrast to the other southern river system, Lyckeby, which experienced very little precipitation in the summer months and a more typical hydrograph dominated by winter precipitation. Future scenarios in this region suggest that the typical hydrograph will retain the general shape of the Lyckeby hydrograph, but with more extreme flow in winter and spring rather than just winter. The strong increase in flow will span a longer seasonal extent than currently seen and this could lead to a more “flattened” hydrographic shape in general. There are also indications that extreme flooding events will become more common in the future, and that the total excursion from mean flow will be greater. If increased precipitation and extreme events are to be expected in this region, it is likely that the delivery of both DOC and especially BOD will also become more constant throughout the year, as seen in the relatively steady loadings of BOD from Emån catchment over this year. Additionally, Weyhenmeyer et al. (2012), found that increased precipitation leads to lower water residence times in the catchment, and lowered the decay of organic carbon on its transit

Seasonal contribution of organic matter to the Baltic Sea

H. E. Reader et al.

[Title Page](#)

[Abstract](#)

[Introduction](#)

[Conclusions](#)

[References](#)

[Tables](#)

[Figures](#)



[Back](#)

[Close](#)

[Full Screen / Esc](#)

[Printer-friendly Version](#)

[Interactive Discussion](#)



to the sea. If so, there is potential for the net delivery of DOC and BOD to be higher at river mouths in the future, in addition to more steady loadings year-round.

In the north, where the preservation of organic matter through the winter months helps to create a large springtime pulse of BOD to the Bothnian Sea, warming winters and increased precipitation across all seasons are likely to have a more drastic effect on catchment dynamics than in the south. Warmer mean winter temperatures, and reduced frost depth and duration (Haei et al., 2012) will lessen the preservation effect that is currently seen in the north. As the mean annual temperatures rise and become more like the southern catchments, it is likely that the overall reactivity of organic matter from the catchment will be lowered as well. More constant input of labile organic matter may increase heterotrophy in the system year-round, compounding the freshwater discharge driven shift to heterotrophy already seen in this region (Wikner and Andersson, 2012).

5 Conclusions

Examining the biological reactivity of DOM and loadings of this reactive material from rivers offers insight into how seasonal and geographical characteristics of the terrestrial system can affect the marine ecosystem. The southern two catchments, while delivering similar amounts of DOC and BOD annually to the Baltic Sea, show drastically different patterns of loadings throughout the year, illustrating the importance of local hydrography and episodic precipitation events on the DOM dynamics in catchments. The northern catchment, with its colder winters, shows the influence of organic matter preservation and a strong spring flood on the DOC in northern rivers. The two-part spring flood due to melt in lower and higher altitudes of the catchment shows that peaks in DOC loading and BOD loading do not necessarily occur at the same time, underlining the importance of examining the reactivity of DOC to truly understand the influence of the terrestrial system on marine environments. The higher delivery of reactive material to the Bothnian Sea suggests that this region is highly influenced by the

BGD

11, 1355–1382, 2014

Seasonal contribution of organic matter to the Baltic Sea

H. E. Reader et al.

Title Page

Abstract

Introduction

Conclusions

References

Tables

Figures

⏪

⏩

◀

▶

Back

Close

Full Screen / Esc

Printer-friendly Version

Interactive Discussion

terrestrial system. With climate change leading to increased precipitation and warmer winter conditions in the north, the dominance of the strong spring peak of DOM delivery in Ume may give way to less intense seasonal patterns and lower overall reactivity delivery to the Bothnian Sea. Similarly, the seasonal changes in precipitation patterns expected in the southern catchments suggest that the dominance of winter delivery of reactive DOM to the Baltic Proper from rivers like Lyckeby is likely to shift towards more even patterns of DOM loading to the Baltic such as seen in Emån catchment. In the future an understanding of both the reactivity of organic matter as well as flow patterns will be necessary to understand the effect of terrestrial organic matter inputs on marine systems.

References

- Algesten, G., Wikner, J., Sobek, S., Tranvik, L. J., and Jansson, M.: Seasonal variation of CO₂ saturation in the Gulf of Bothnia: indications of marine net heterotrophy, *Global Biogeochem. Cy.*, 18, GB4021, doi:10.1029/2004GB002232, 2004.
- Algesten, G., Brydsten, L., Jonsson, P., Kortelainen, P., Löfgren, S., Rahm, L., Räike, A., Sobek, S., Tranvik, L., and Wikner, J.: Organic carbon budget for the Gulf of Bothnia, *J. Marine Syst.*, 63, 155–161, 2006.
- Alling, V., Humborg, C., Morth, C. M., Rahm, L., and Pollehne, F.: Tracing terrestrial organic matter by $\delta^{34}\text{S}$ and $\delta^{13}\text{C}$ signatures in a subarctic estuary, *Limnology and Oceanography*, 53, 2594–2602, doi:10.4319/Lo.2008.53.6.2594, 2008.
- Amon, R. M. W. and Benner, R.: Rapid-cycling of high-molecular-weight dissolved organic-matter in the ocean, *Nature*, 369, 549–552, doi:10.1038/369549a0, 1994.
- Amon, R. M. W. and Benner, R.: Bacterial utilization of different size classes of dissolved organic matter, *Limnol. Oceanogr.*, 41, 41–51, 1996.
- Asmala, E., Stedmon, C. A., and Thomas, D. N.: Linking CDOM spectral absorption to dissolved organic carbon concentrations and loadings in boreal estuaries, *Estuar. Coast. Shelf S.*, 111, 107–117, doi:10.1016/J.Ecss.2012.06.015, 2012.
- Asmala, E., Autio, R., Kaartokallio, H., Pitkänen, L., Stedmon, C. A., and Thomas, D. N.: Bioavailability of riverine dissolved organic matter in three Baltic Sea estuaries and the ef-

BGD

11, 1355–1382, 2014

Seasonal contribution of organic matter to the Baltic Sea

H. E. Reader et al.

Title Page

Abstract

Introduction

Conclusions

References

Tables

Figures

⏪

⏩

◀

▶

Back

Close

Full Screen / Esc

Printer-friendly Version

Interactive Discussion



fect of catchment land use, *Biogeosciences*, 10, 6969–6986, doi:10.5194/bg-10-6969-2013, 2013.

Battin, T. J., Luysaert, S., Kaplan, L. A., Aufdenkampe, A. K., Richter, A., and Tranvik, L. J.: The boundless carbon cycle, *Nat. Geosci.*, 2, 598–600, doi:10.1038/Ngeo618, 2009.

5 Berggren, M., Lapiere, J. F., and del Giorgio, P. A.: Magnitude and regulation of bacterioplankton respiratory quotient across freshwater environmental gradients, *ISME J.*, 6, 984–993, doi:10.1038/ismej.2011.157, 2012.

Bishop, K. H., Lundström, U. S., and Giesler, R.: Transfer of organic C from forest soils to surface waters: example from northern Sweden, *Appl. Geochem.*, 8, 11–15, doi:10.1016/S0883-2927(09)80003-6, 1993.

10 Cai, W. J.: Estuarine and coastal ocean carbon paradox: CO₂ sinks or sites of terrestrial carbon incineration?, *Annu. Rev. Mar. Sci.*, 3, 123–145, doi:10.1146/annurev-marine-120709-142723, 2011.

15 Cole, J. J., Prairie, Y. T., Caraco, N. F., McDowell, W. H., Tranvik, L. J., Striegl, R. G., Duarte, C. M., Kortelainen, P., Downing, J. A., Middelburg, J. J., and Melack, J.: Plumbing the global carbon cycle: integrating inland waters into the terrestrial carbon budget, *Ecosystems*, 10, 171–184, doi:10.1007/S10021-006-9013-8, 2007.

20 Conley, D. J., Carstensen, J., Aigars, J., Axe, P., Bonsdorff, E., Eremina, T., Haahti, B. M., Humborg, C., Jonsson, P., Kotta, J., Lannegren, C., Larsson, U., Maximov, A., Medina, M. R., Lysiak-Pastuszak, E., Remeikaite-Nikiene, N., Walve, J., Wilhelms, S., and Zillen, L.: Hypoxia is increasing in the coastal zone of the Baltic Sea, *Environ. Sci. Technol.*, 45, 6777–6783, doi:10.1021/Es201212r, 2011.

25 Dagg, M., Sato, R., Liu, H. B., Bianchi, T. S., Green, R., and Powell, R.: Microbial food web contributions to bottom water hypoxia in the northern Gulf of Mexico, *Cont. Shelf. Res.*, 28, 1127–1137, doi:10.1016/J.Csr.2008.02.013, 2008.

De Wit, H. A., Mulder, J., Hindar, A., and Hole, L.: Long-term increase in dissolved organic carbon in streamwaters in Norway is response to reduced acid deposition, *Environ. Sci. Technol.*, 41, 7706–7713, doi:10.1021/Es070557f, 2007.

30 del Giorgio, P. A. and Davis, J.: Patterns in dissolved organic matter lability and consumption across aquatic ecosystems, in: *Aquatic Ecosystems: Interactivity of Dissolved Organic Matter*, edited by: Findlay, S. and Sinsabaugh, R. L., Academic Press, San Diego, CA, 399–425, 2003.

BGD

11, 1355–1382, 2014

Seasonal contribution of organic matter to the Baltic Sea

H. E. Reader et al.

Title Page

Abstract

Introduction

Conclusions

References

Tables

Figures

⏪

⏩

◀

▶

Back

Close

Full Screen / Esc

Printer-friendly Version

Interactive Discussion

Seasonal contribution of organic matter to the Baltic Sea

H. E. Reader et al.

Title Page

Abstract

Introduction

Conclusions

References

Tables

Figures

⏪

⏩

◀

▶

Back

Close

Full Screen / Esc

Printer-friendly Version

Interactive Discussion

Deutsch, B., Alling, V., Humborg, C., Korth, F., and Mörtz, C. M.: Tracing inputs of terrestrial high molecular weight dissolved organic matter within the Baltic Sea ecosystem, *Biogeosciences*, 9, 4465–4475, doi:10.5194/bg-9-4465-2012, 2012.

Erlandsson, M., Buffam, I., Folster, J., Laudon, H., Temnerud, J., Weyhenmeyer, G. A., and Bishop, K.: Thirty-five years of synchrony in the organic matter concentrations of Swedish rivers explained by variation in flow and sulphate, *Glob. Change Biol.*, 14, 1191–1198, doi:10.1111/J.1365-2486.2008.01551.X, 2008.

Evans, C. D.: Modelling the effects of climate change on an acidic upland stream, *Biogeochemistry*, 74, 21–46, doi:10.1007/S10533-004-0154-6, 2005.

Evans, C. D., Jones, T. G., Burden, A., Ostle, N., Zielinski, P., Cooper, M. D. A., Peacock, M., Clark, J. M., Oulehle, F., Cooper, D., and Freeman, C.: Acidity controls on dissolved organic carbon mobility in organic soils, *Glob. Change Biol.*, 18, 3317–3331, doi:10.1111/J.1365-2486.2012.02794.X, 2012.

Garnett, M. H., Ineson, P., and Stevenson, A. C.: Effects of burning and grazing on carbon sequestration in a Pennine blanket bog, UK, *The Holocene*, 10, 729–736, doi:10.1191/09596830094971, 2000.

Haei, M., Öquist, M. G., Ilstedt, U., and Laudon, H.: The influence of soil frost on the quality of dissolved organic carbon in a boreal forest soil: combining field and laboratory experiments, *Biogeochemistry*, 107, 95–106, 2012.

Helcom: The fourth Baltic Sea pollution load compilation (PLC-4), Helsinki Commission, Helsinki, Finland, 2004.

Helms, J. R., Stubbins, A., Ritchie, J. D., Minor, E. C., Kieber, D. J., and Mopper, K.: Absorption spectral slopes and slope ratios as indicators of molecular weight, source, and photobleaching of chromophoric dissolved organic matter, *Limnol. Oceanogr.*, 53, 955–969, 2008.

Hruska, J., Kram, P., Mcdowell, W. H., and Oulehle, F.: Increased Dissolved Organic Carbon (DOC) in Central European streams is driven by reductions in ionic strength rather than climate change or decreasing acidity, *Environ. Sci. Technol.*, 43, 4320–4326, doi:10.1021/Es803645w, 2009.

Koehler, B., von Wachenfeldt, E., Kothawala, D., and Tranvik, L. J.: Reactivity continuum of dissolved organic carbon decomposition in lake water, *J. Geophys. Res.-Biogeo.*, 117, G01024, doi:10.1029/2011jg001793, 2012.

Kritzberg, E. S. and Ekström, S. M.: Increasing iron concentrations in surface waters – a factor behind brownification?, *Biogeosciences*, 9, 1465–1478, doi:10.5194/bg-9-1465-2012, 2012.

Seasonal contribution of organic matter to the Baltic Sea

H. E. Reader et al.

[Title Page](#)

[Abstract](#)

[Introduction](#)

[Conclusions](#)

[References](#)

[Tables](#)

[Figures](#)

[⏪](#)

[⏩](#)

[◀](#)

[▶](#)

[Back](#)

[Close](#)

[Full Screen / Esc](#)

[Printer-friendly Version](#)

[Interactive Discussion](#)



Laudon, H., Taberman, I., Ågren, A., Futter, M., Ottosson-Löfvenius, M., and Bishop, K.: The Krycklan catchment study – a flagship infrastructure for hydrology, biogeochemistry, and climate Research in the boreal landscape, *Water Resour. Res.*, 47, 7154–7158, doi:10.1002/wrcr.20520, 2013.

5 Meier, H. E. M.: Baltic Sea climate in the late twenty-first century: a dynamical downscaling approach using two global models and two emission scenarios, *Clim. Dynam.*, 27, 39–68, doi:10.1007/s00382-006-0124-x, 2006.

10 Miller, W. L., Moran, M. A., Sheldon, W. M., Zepp, R. G., and Opsahl, S.: Determination of apparent quantum yield spectra for the formation of biologically labile photoproducts, *Limnol. Oceanogr.*, 47, 343–352, 2002.

15 Monteith, D. T., Stoddard, J. L., Evans, C. D., de Wit, H. A., Forsius, M., Hogasen, T., Wilander, A., Skjelkvale, B. L., Jeffries, D. S., Vuorenmaa, J., Keller, B., Kopacek, J., and Vesely, J.: Dissolved organic carbon trends resulting from changes in atmospheric deposition chemistry, *Nature*, 450, 537–539, doi:10.1038/Nature06316, 2007.

20 Nagata, T.: Organic matter-bacteria interactions in seawater, in: *Microbial Ecology of the Oceans*, 2nd edn., edited by: Kirchman, D. L., John Wiley and Sons, 207–241, 2008.

25 Oni, S. K., Futter, M. N., Bishop, K., Köhler, S. J., Ottosson-Löfvenius, M., and Laudon, H.: Long-term patterns in dissolved organic carbon, major elements and trace metals in boreal headwater catchments: trends, mechanisms and heterogeneity, *Biogeosciences*, 10, 2315–2330, doi:10.5194/bg-10-2315-2013, 2013.

Pomeroy, L. R.: Oceans food web, a changing paradigm, *Bioscience*, 24, 499–504, 1974.

Rolf, C. and Elmgren, R.: Use of riverine organic matter in plankton food webs of the Baltic Sea, *Mar. Ecol.-Prog. Ser.*, 197, 81–101, doi:10.3354/Meps197081, 2000.

30 Stedmon, C. A., Amon, R. M. W., Rinehart, A. J., and Walker, S. A.: The supply and characteristics of colored dissolved organic matter (CDOM) in the Arctic Ocean: pan Arctic trends and differences, *Mar. Chem.*, 124, 108–118, doi:10.1016/J.Marchem.2010.12.007, 2011.

Tranvik, L. J., Downing, J. A., Cotner, J. B., Loiselle, S. A., Striegl, R. G., Ballatore, T. J., Dillon, P., Finlay, K., Fortino, K., Knoll, L. B., Kortelainen, P. L., Kutser, T., Larsen, S., Laurion, I., Leech, D. M., McCallister, S. L., McKnight, D. M., Melack, J. M., Overholt, E., Porter, J. A., Prairie, Y., Renwick, W. H., Roland, F., Sherman, B. S., Schindler, D. W., Sobek, S., Tremblay, A., Vanni, M. J., Verschoor, A. M., von Wachenfeldt, E., and Weyhenmeyer, G. A.: Lakes and reservoirs as regulators of carbon cycling and climate, *Limnol. Oceanogr.*, 54, 2298–2314, doi:10.4319/Lo.2009.54.6_Part_2.2298, 2009.

BGD

11, 1355–1382, 2014

**Seasonal
contribution of
organic matter to the
Baltic Sea**

H. E. Reader et al.

[Title Page](#)[Abstract](#)[Introduction](#)[Conclusions](#)[References](#)[Tables](#)[Figures](#)[Back](#)[Close](#)[Full Screen / Esc](#)[Printer-friendly Version](#)[Interactive Discussion](#)

- Weishaar, J. L., Aiken, G. R., Bergamaschi, B. A., Fram, M. S., Fujii, R., and Mopper, K.: Evaluation of specific ultraviolet absorbance as an indicator of the chemical composition and reactivity of dissolved organic carbon, *Environ. Sci. Technol.*, 37, 4702–4708, doi:10.1021/es030360x, 2003.
- 5 Weyhenmeyer, G. A., Froberg, M., Karlton, E., Khalili, M., Kothawala, D., Temnerud, J., and Tranvik, L. J.: Selective decay of terrestrial organic carbon during transport from land to sea, *Glob. Change Biol.*, 18, 349–355, doi:10.1111/J.1365-2486.2011.02544.X, 2012.
- 10 Wikner, J. and Andersson, A.: Increased freshwater discharge shifts the trophic balance in the coastal zone of the northern Baltic Sea, *Glob. Change Biol.*, 18, 2509–2519, doi:10.1111/J.1365-2486.2012.02718.X, 2012.

Seasonal contribution of organic matter to the Baltic Sea

H. E. Reader et al.

[Title Page](#)

[Abstract](#)

[Introduction](#)

[Conclusions](#)

[References](#)

[Tables](#)

[Figures](#)

[⏪](#)

[⏩](#)

[◀](#)

[▶](#)

[Back](#)

[Close](#)

[Full Screen / Esc](#)

[Printer-friendly Version](#)

[Interactive Discussion](#)

Table 1. Catchment characteristics. Average annual temperatures are calculated from 200–2010, average annual precipitation is calculated from 1992–2002 for Lyckeby, 1998–2008 for upper Ume, and 2000–2010 for lower Ume and Emån.

River	Latitude	Longitude	Area (km ²)	% forest	% pasture	% crop	% peat	% water	% other	Mean temp (°C)	Winter temp (°C)	Mean ppt (mm)
Ume	63.82	20.26	26 815	42	< 1	< 1	1	8	49	Upper/lower 0.98/1.74	Upper/lower −10.47/−9.80	Upper/lower 843/610
Emån	57.14	16.47	4471	69	5	8	2	6	10	7.07	−1.30	624
Lyckeby	56.08	15.59	810	72	5	3	7	4	9	7.74	0.17	694

Seasonal contribution of organic matter to the Baltic Sea

H. E. Reader et al.

Table 2. Organic matter characteristics for the three catchments.

River	$S_{(275-295)}$ mean (μm^{-1})	$S_{(275-295)}$ range (μm^{-1})	SUVA_{254} mean ($\text{m}^2 \text{g}^{-1} \text{C}$)	SUVA_{254} range ($\text{m}^2 \text{g}^{-1} \text{C}$)	BOD mean ($\mu\text{molL}^{-1} \text{O}_2$)	BOD range ($\mu\text{molL}^{-1} \text{O}_2$)	BOD (% of total DOC) mean	BOD (% of total DOC) range
Ume	14.61	13.35–16.43	3.59	1.72–5.38	31.9	9.7–66.1	8.0	3.0–14.6
Emån	14.48	13.65–16.40	3.58	2.96–4.51	34.5	12.8–60.6	2.5	1.1–4.5
Lyckeby	13.71	12.97–14.26	3.94	3.47–4.31	35.1	10.5–66.5	2.2	0.7–3.9

Title Page

Abstract

Introduction

Conclusions

References

Tables

Figures

⏪

⏩

◀

▶

Back

Close

Full Screen / Esc

Printer-friendly Version

Interactive Discussion



Seasonal contribution of organic matter to the Baltic Sea

H. E. Reader et al.

Table 3. Correlation statistics for various catchment characteristics.

Relationship	Ume		Emån		Lyckeby	
	<i>r</i>	<i>p</i>	<i>r</i>	<i>p</i>	<i>r</i>	<i>p</i>
DOC– <i>a</i> ₃₇₅	0.85	< 0.001	0.84	< 0.001	0.90	< 0.001
DOC–flow	0.31	0.33	0.86	< 0.001	0.62	< 0.05
BOD–flow	0.57	0.07	0.29	0.36	0.88	< 0.001
BOD–DOC	0.46	0.16	0.43	0.16	0.64	< 0.05
DOC–Krycklan flow	0.71	< 0.05	N/A	N/A	N/A	N/A
BOD–Krycklan flow	0.30	0.43	N/A	N/A	N/A	N/A

Title Page

Abstract

Introduction

Conclusions

References

Tables

Figures

⏪

⏩

◀

▶

Back

Close

Full Screen / Esc

Printer-friendly Version

Interactive Discussion

Seasonal contribution of organic matter to the Baltic Sea

H. E. Reader et al.

[Title Page](#)

[Abstract](#)

[Introduction](#)

[Conclusions](#)

[References](#)

[Tables](#)

[Figures](#)



[Back](#)

[Close](#)

[Full Screen / Esc](#)

[Printer-friendly Version](#)

[Interactive Discussion](#)

Table 4. Areal annual loadings of organic matter for the three catchments.

River	DOC ($\text{gC m}^{-2} \text{yr}^{-1}$)	CDOM (a_{375}) (yr^{-1})	BOD ($\text{mmol O}_2 \text{m}^{-2} \text{yr}^{-1}$)
Ume	3.43	4.86	22.79
Emån	5.04	7.08	10.39
Lyckeby	4.08	6.37	10.29

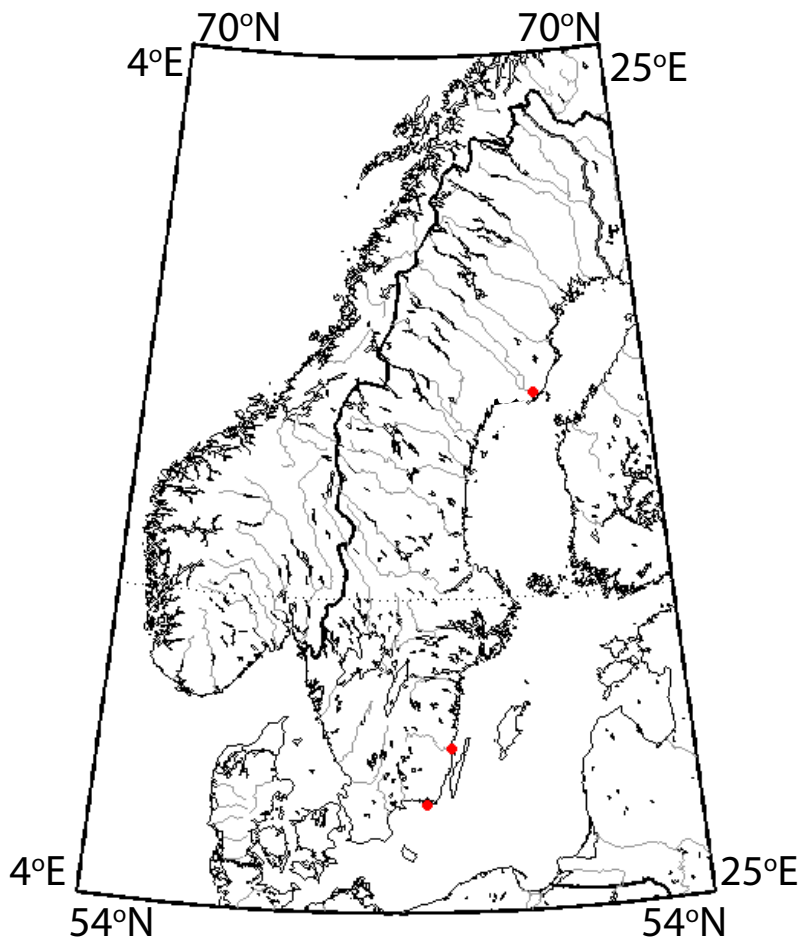


Fig. 1. Map of catchments locations. From north to south: Ume älv, Emån river, Lyckeby river.

Seasonal contribution of organic matter to the Baltic Sea

H. E. Reader et al.

Title Page

Abstract

Introduction

Conclusions

References

Tables

Figures

◀

▶

◀

▶

Back

Close

Full Screen / Esc

Printer-friendly Version

Interactive Discussion

Seasonal contribution of organic matter to the Baltic Sea

H. E. Reader et al.

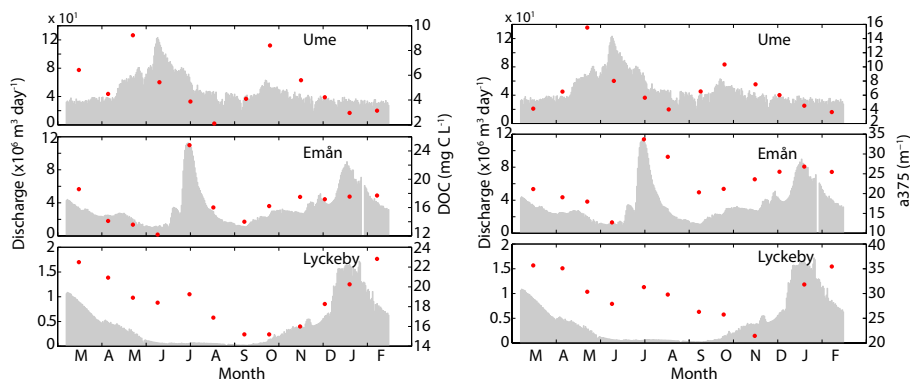


Fig. 2. Dissolved organic carbon (left) and CDOM (a_{375} , right) for the three catchments. Red dots are organic matter characteristics, grey bars represent the daily flow on each river at the point of sampling.

Title Page

Abstract

Introduction

Conclusions

References

Tables

Figures

◀

▶

◀

▶

Back

Close

Full Screen / Esc

Printer-friendly Version

Interactive Discussion

Seasonal contribution of organic matter to the Baltic Sea

H. E. Reader et al.

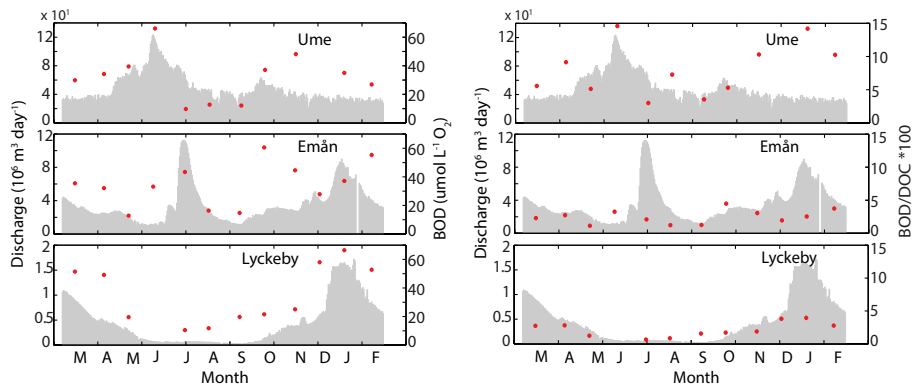


Fig. 3. Biological oxygen demand (left) and percent of total dissolved organic carbon that is biologically reactive (i.e. BOD/DOC ratio $\cdot 100$, assuming an respiratory quotient of one) for the three rivers. Red dots are organic matter characteristics, grey bars represent the daily flow on each river at the point of sampling.

Title Page

Abstract

Introduction

Conclusions

References

Tables

Figures

⏪

⏩

◀

▶

Back

Close

Full Screen / Esc

Printer-friendly Version

Interactive Discussion

Seasonal contribution of organic matter to the Baltic Sea

H. E. Reader et al.

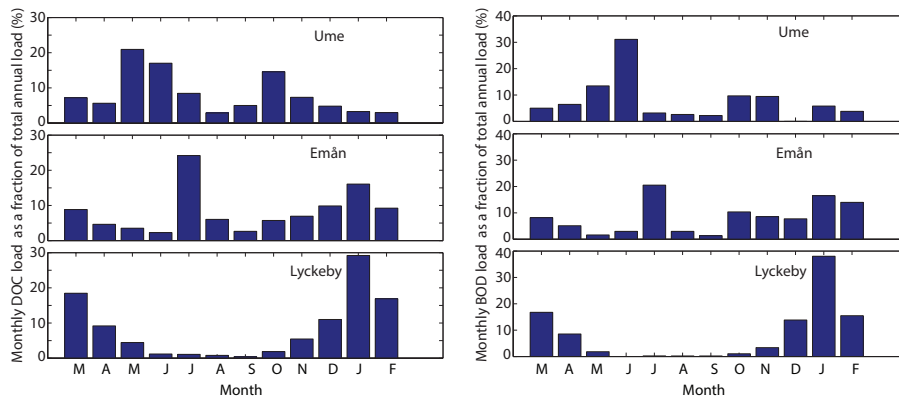


Fig. 4. Mean monthly loadings of dissolved organic carbon and biological oxygen demand, represented as a percent of the total annual loading for each river.

[Title Page](#)

[Abstract](#)

[Introduction](#)

[Conclusions](#)

[References](#)

[Tables](#)

[Figures](#)

⏪

⏩

◀

▶

[Back](#)

[Close](#)

[Full Screen / Esc](#)

[Printer-friendly Version](#)

[Interactive Discussion](#)