

BGD

11, 16105–16134, 2014

The contribution of
zooplankton faecal
pellets

C. Manno et al.

The contribution of zooplankton faecal pellets to deep carbon transport in the Scotia Sea (Southern Ocean)

C. Manno, G. Stowasser, P. Enderlein, S. Fielding, and G. A. Tarling

British Antarctic Survey, natural Environmental Research Council, High Cross, Madingley Road, Cambridge, CB3 0ET, UK

Received: 17 September 2014 – Accepted: 22 September 2014 – Published: 26 November 2014

Correspondence to: C. Manno (clanno@bas.ac.uk)

Published by Copernicus Publications on behalf of the European Geosciences Union.

[Title Page](#)

[Abstract](#)

[Introduction](#)

[Conclusions](#)

[References](#)

[Tables](#)

[Figures](#)



[Back](#)

[Close](#)

[Full Screen / Esc](#)

[Printer-friendly Version](#)

[Interactive Discussion](#)



Abstract

The northern Scotia Sea contains the largest seasonal uptake of atmospheric carbon dioxide yet measured in the Southern Ocean. This study examines one of the main routes by which this carbon fluxes to the deep ocean, through the production of faecal pellets (FPs) by the zooplankton community. Deep sediment traps were deployed in two sites with contrasting ocean productivity regimes (P3, naturally iron-fertilized and P2, iron-limited), within the same water mass. The magnitude and seasonal pattern of particulate organic carbon (POC) and FPs in the traps was markedly different between the two sites. Maximum fluxes at P3 ($22.91 \text{ mg C m}^{-2} \text{ d}^{-1}$; $2534 \times 10 \text{ FP m}^{-2} \text{ d}^{-1}$) were an order of magnitude higher than at P2 ($4.01 \text{ mg C m}^{-2} \text{ d}^{-1}$; $915 \times 10 \text{ FP m}^{-2} \text{ d}^{-1}$), with flux at P3 exhibiting a double seasonal peak, compared to a single flatter peak at P2. The maximum contribution of FP carbon to the total amount of POC was twice as high at P3 (91 %) compared to P2 (40 %). The dominant FP category at P3 varied between round, ovoidal, cylindrical and tabular over the course of the year while, at P2, ovoidal FPs were consistently dominant, always making up more than 60 % of the FP assemblage. There was also a difference in the FP state between the two sites, with FPs being relatively intact at P3, while FPs were often fragmented with broken peritrophic membranes at P2. The exception was ovoidal FPs, which were relatively intact at both sites. Our observations suggest that there was community shift from an herbivorous to an omnivorous diet from spring through to autumn at P3 while detritivores had a higher relative importance over the year at P2. Furthermore, the flux was mainly a product of the vertically migrating zooplankton community at P3 while the FP flux was more likely to be generated by deeper-dwelling zooplankton feeding on recycled material at P2. The results demonstrate that the feeding behavior and vertical distribution of the zooplankton community plays a critical role in controlling the magnitude of carbon export to the deep ocean in this region.

The contribution of zooplankton faecal pellets

C. Manno et al.

Title Page

Abstract

Introduction

Conclusions

References

Tables

Figures



Back

Close

Full Screen / Esc

Printer-friendly Version

Interactive Discussion



1 Introduction

The largest export by the biological carbon pump is via passive sinking of particulate organic carbon (POC), which is comprised of phytoplankton aggregates, detritus, living and dead cells, molts, and zooplankton faecal products (Fowler and Knauer, 1986).

5 The importance of faecal pellets (FPs) for the export of organic material from the euphotic zone into deeper waters has been widely recognised (Bathmann and Liebezeit, 1986; Fowler et al., 1991; Wexels Riser et al., 2002). Zooplankton FPs are a ubiquitous component of the oceanic particle flux and are an important nutrient source for deep water ecosystems (Turner, 2002). Small pellets generated by microzooplankton and small copepods have slow sinking rates and are likely to be remineralised by degradation and recycling processes during sinking (Dagg et al., 2003). By contrast, large zooplankton produce larger FPs that sink more rapidly, and are less likely to be remineralised (Lampitt et al., 1990; Wassmann, 1998). They therefore provide a major conduit for the transfer of organic matter to the deep ocean (Komar et al., 1981; Bruland and Silver, 1981). Alongside passive sinking, the transport of POC is facilitated through active transport by mesopelagic zooplankton that vertically migrate to the surface at night to feed, then egest FPs in the deeper ocean during the day (Atkinson et al., 1996; Kobari et al., 2008)

20 The Southern Ocean accounts for almost 20% of the global ocean CO₂ uptake, principally due to CO₂ fixation by phytoplankton and successive downward particle flux of biogenic carbon (Toggweiler et al., 2003). The faeces of zooplankton represent an important component of biogenic flux in this region, with respect to both organic and siliceous materials (Fischer et al., 1988; Wefer et al., 1988) and can contribute up to 100% of the organic carbon flux (Accornero et al., 2003; Smith et al., 2011). Productivity over much of the Southern Ocean is limited by the lack of iron, an essential micronutrient for photosynthesis, resulting in there being an excess of macronutrients but low levels of chlorophyll (Martin et al., 1994). However, hotspots of productivity arise where iron becomes available, of which the region downstream of South Georgia is

BGD

11, 16105–16134, 2014

The contribution of zooplankton faecal pellets

C. Manno et al.

Title Page

Abstract

Introduction

Conclusions

References

Tables

Figures



Back

Close

Full Screen / Esc

Printer-friendly Version

Interactive Discussion



The contribution of zooplankton faecal pellets

C. Manno et al.

Title Page

Abstract

Introduction

Conclusions

References

Tables

Figures



Back

Close

Full Screen / Esc

Printer-friendly Version

Interactive Discussion



a notable case, with an extensive bloom supported until late summer by macronutrients and iron resupplied from the shelf edge, shelf-sediment interactions and vertical mixing of deep waters (Korb et al., 2008). Mesozooplankton biomass in this region can exceed the Southern Ocean average by a factor of 6 (Ward et al., 1995; Atkinson et al., 1996; Pakhomov et al., 1997) and there are large concentrations of Antarctic krill as well as high densities of marine- and land-based predators (Atkinson et al., 2001). This region has been estimated to have the largest seasonal uptake of atmospheric carbon dioxide yet measured in the Southern Ocean (Schlitzer, 2002; Jones et al., 2012). Such Fe-fertilised regions of the Southern Ocean are also known to exhibit enhanced carbon export to the deep ocean (Pollard et al., 2007; Blain et al., 2007). Nevertheless, the magnitude of deep carbon export around the South Georgia, as well as the contribution of zooplankton FPs to the carbon flux, is still unknown.

Here, we describe a 4 year long series of POC and faecal-pellet fluxes, as measured by deep moored sediment traps located in two sites close to South Georgia. These sites were deliberately chosen to have contrasting productivity regimes (Korb et al., 2012) within the same water mass, with one site being naturally iron-fertilised (P3) and, the other, relatively iron-limited (P2). The aim of this work was to investigate the seasonal and regional change in the deep carbon flux with a particular focus on the role of FPs in regulating the magnitude of carbon export in these two regions. We quantify zooplankton FPs fluxes as well as their contribution to the overall POC flux. The relationship between different zooplankton feeding strategies and FP export is also considered.

2 Methods

Bottom tethered moorings were repeatedly deployed at two sites (P2 and P3) for approximately 12 month periods between February 2008 and April 2011. P2 was located in a site that was oceanographically upstream of South Georgia (55°11.99 S 41°07.42 W) while P3 was downstream (52°43.40 S 40°08.83 W) (Fig. 1). Each sed-

iment trap (McLane Parflux sediment traps, 0.5 m² surface area; McLane Labs, Falmouth, MA, USA) carried 21 receiving cups, had a collecting area of 0.6 m² and was fitted with a plastic baffle mounted in the opening, to prevent the entrance of large organisms. Prior to deployment, the receiving cups were filled with NaCl buffered HgCl₂ seawater solution to arrest biological degradation during sample collection. Traps were deployed at a depth of 1500 m (P2, water depth 3200 m) and 2000 m (P3, water depth 3800 m), and the sample carousel programmed to rotate at intervals of 15 days in austral summer and 30 days in austral winter. The sample cup for February 2008 was not present on recovery. The period between December 2008 and February 2009 was missed due to bad weather delaying deployment.

2.1 Trap sample processing and analyses

Once in the laboratory, the supernatant of each cup was removed by pipette and its pH was measured in order to check for possible carbonate dissolution. Prior to splitting, “swimmers”, i.e. zooplanktonic organisms that can enter the receiving cups while alive were carefully removed: samples were first wet-sieved through a 1 mm nylon mesh and the remaining swimmers were hand-picked under a dissecting microscope. Large aggregates, fragments of moults and empty tests, retained by the mesh were returned to the sample. Each sample was then divided into a series of replicate fractions for subsequent analysis using a McLane rotary sample splitter (McLane Labs, Falmouth, MA, USA). Replicate fractions were vacuum filtered through preweighed and precombusted (450 °C for 4 h) Whatman GF/F filters for organic carbon (POC) analyses. Filters were then desalted by short washing with distilled water and dried at 60 °C. POC was measured by combustion in an Elemental Analyzer (CHN); for POC determination, filters were previously treated with 2N H₃PO₄ and 1N HCl. POC flux was expressed in mg m⁻² d⁻¹, estimated by dividing the total mass per sample by the time interval and the trap collection area.

BGD

11, 16105–16134, 2014

The contribution of zooplankton faecal pellets

C. Manno et al.

Title Page

Abstract

Introduction

Conclusions

References

Tables

Figures

◀

▶

◀

▶

Back

Close

Full Screen / Esc

Printer-friendly Version

Interactive Discussion



The contribution of zooplankton faecal pellets

C. Manno et al.

Title Page

Abstract

Introduction

Conclusions

References

Tables

Figures



Back

Close

Full Screen / Esc

Printer-friendly Version

Interactive Discussion



FPs were counted and classified with respect to their morphology, using a combination of light microscopy and Scanning Electron Microscopy (SEM). Pellets were visually categorized by shape into 5 categories (ovoid, round, cylindrical, tabular and ellipsoidal, Fig. 2a–e) from which we inferred the zooplankton producer using information from FP production experiments by Gonzalez (1992); Yoon et al. (2001); Madin et al., (2006); Manno et al., (2010): copepods and pteropod (ovoid), amphipod (round), krill (cylindrical), salp (tabular), larvaceans (ellipsoidal). The dimensions of the first 60–100 pellets of each morphological type observed for each sample were measured (length and width) using an ocular micrometer, from which pellet volume was calculated by the geometrical formulas associated to the FP shapes (i.e sphere, cylinder, ovoid) (Gonzales et al., 2000). Note that, due to the fragile nature of salp FP, this FP category was removed from the entire samples before splitting. Further identification of the content of FP types was carried out on sub-samples using SEM. To semi-quantify the variability in FP contents and state of preservation, a total of 60 FPs for each location were classified in term of intact diatoms, fragmented diatoms and reworked material contents.

FP carbon content of each FP category was estimated using an elemental (CHN) analyser, for which between 100 and 200 FPs from each category type were prepared. The exception was for the tabular type, for which only around 50 were prepared due to their rarity in samples. These categories were further subdivided into 2 periods: late spring–early autumn (October to April) and late autumn to the end of winter (May to September). The combination of these measurements with the FP volume estimates (detailed above) allowed us to determine a season-specific FP carbon (FPC) content expressed as mgCmm^{-3} for each FP type. Note that fecal “fluff” (partially degraded FPs) was difficult to quantify, so our estimate of the importance of FPC to total flux is likely to be an underestimate.

Attempts were made to fit regressions to the relationship between total POC and either the total number of FPs (FPn) or the percentage of the total POC flux made up of FPC (%FPC) for each station. Least-squares regression fitting was carried out using SIGMAPLOT 12.5 (SYSTAT Software 2011) where a range of functions were used

(linear, quadratic, power) to derive the best fit for the minimum number of parameters. A regression was only considered further if it achieved a significance value of $P < 0.05$.

1-way ANOVA tests were performed to determine if there were any significant differences between seasons and sites with regards the percentage of the total POC flux made up of FPC (%FPC). All the data were checked for normality and variance homogeneity (Levene's test) before a Tukey's honest significant difference test was used to check for differences between groups. Differences were considered significant where $P < 0.05$. Statistical analyses were carried out using Statistica for Windows version 6.0.

3 Results

3.1 Seasonal and inter-annual patterns in POC and FP flux

The interannual variability and magnitude of the deep water POC flux was markedly different between P2 and P3 (Fig. 3a). At P3, there was a double seasonal peak, with a primary higher peak occurring in November–December and a secondary lower peak in March–April each year. POC flux at P3 ranged between a maximum of $22.91 \text{ mgC m}^{-2} \text{ d}^{-1}$ and a minimum of $0.54 \text{ mgC m}^{-2} \text{ d}^{-1}$. At P2, seasonal oscillations in POC flux were less evident and the maximum POC flux was one order of magnitude lower than that observed at P3. Maximum and minimum fluxes at P2 were 4.01 and $0.43 \text{ mgC m}^{-2} \text{ d}^{-1}$ respectively.

The differences between the two sites were also reflected in the FP flux (Fig. 3b). While the seasonal range in FP flux varied between 56 to $2534 \text{ FP} \times 10 \text{ m}^{-2} \text{ d}^{-1}$ at P3, the range was almost 3 times smaller at P2, with minimum and maximum values of 36 and $915 \times 10 \text{ FP m}^{-2} \text{ d}^{-1}$ respectively. At P3, the seasonal trajectory in FP flux matched that of the POC flux, with a high peak in late spring-summer, a lower peak in late summer–early autumn and a minimum FP flux during the winter period (May to August). Like total POC, such seasonal peaks and troughs were less evident at P2.

BGD

11, 16105–16134, 2014

The contribution of zooplankton faecal pellets

C. Manno et al.

Title Page

Abstract

Introduction

Conclusions

References

Tables

Figures



Back

Close

Full Screen / Esc

Printer-friendly Version

Interactive Discussion



The dominance of the different FP categories also showed notable differences between the two stations (Fig. 4). The relative dominance of different FP types varied over the course of the year at P3, with ovoidal and cylindrical FPs making up around 70 % of the assemblage. Tabular FPs became most prominent during the autumn–winter season, when they made up 12 % of the total number of FPs. The FP assemblage at P2 was comparatively more homogeneous, with ovoidal FPs making up more than 60 % of the FP assemblage across all years and seasons. Round, cylindrical and ellipsoidal FPs contributed a maximum of 33, 19 and 5 % respectively of all FPs at P2. In general, at P3, all the FP types were consistently present all year round, while were absent at different times at P2.

3.2 FP characteristics

The characteristics of the FP types themselves also varied between sites and seasons. At P3, ovoidal FPs were relatively large and often dark brown in appearance. Ovoidal FPs at P2, by contrast, were often smaller in size and a lighter, yellow-brown colour. SEM investigations found that FPs in P3 were always well compacted and intact with only a small proportion with evident signs of degradation (< 35 %). In P2, except for ovoidal FPs (< 10 %), up to 70 % of each pellet category was degraded, with the peritrophic membrane broken in some places and FPs often fragmented (Fig. 5a). The amount of “fluff” (significantly degraded and therefore unrecognizable remnants of FPs) was higher in P2 than in P3.

During late spring and early summer at P3, 91 % of FP contained well-preserved centric and pennate diatoms. Diatoms were also present in FPs collected in late summer–autumn, although in the majority of FPs (70 %), they were present as small fragments (Fig. 5b). Throughout the year at P2, FPs (> 54 %) mainly contained reworked biogenic detritus (most likely, the remains of diatoms and organic material). At both locations, autumn FPs also contained silicoflagellates mixed within an organic matrix.

BGD

11, 16105–16134, 2014

The contribution of zooplankton faecal pellets

C. Manno et al.

Title Page

Abstract

Introduction

Conclusions

References

Tables

Figures



Back

Close

Full Screen / Esc

Printer-friendly Version

Interactive Discussion



3.3 FPC contribution to POC flux

FPC content varied between the seasons and category (Table 1). In general, FPC values were at their lowest during the autumn–winter period at both sites.

At P3, significant relationships were found between total POC flux and either FPn or %FPC, with the best fit between POC flux and FPn being a positive linear relationship ($F = 6.21$, $Df = 34$, $P = 0.018$), and between POC and %FPC, a negative linear relationship ($F = 48.85$, $Df = 34$, $P < 0.0001$, Fig. 6 upper). No significant relationships were found between POC and either FPn or %FPC at P2 (Fig. 6 lower).

%FPC was significantly higher at P3 than at P2 throughout the year (ANOVA, $F = 13.32$, $Df = 29.2$, Tukey HSD $p < 0.001$). Over the course of the year at P3, %FPC was significantly lower during spring than in summer and autumn–winter (ANOVA, $Df = 4.21$, $F = 7.03$, Tukey HSD $p < 0.005$, Fig. 7a). %FPC did not vary significantly over the course of the year at P2 ($p = 0.321$, Fig. 7b).

At P3, the ovoidal and cylindrical categories made the largest contribution to %FPC amongst all FP categories. The exception was during spring, when the relative contributions were more evenly split between FP categories. It was also notable that tabular FPs contributed around 20 % to %FPC during autumn–winter, but were only minor contributors in spring and summer. At P2, the majority of %FPC was made up by ovoidal FPs throughout the year.

4 Discussion

4.1 C export downstream and upstream of South Georgia

The phytoplankton bloom downstream of South Georgia is a relatively consistent feature that is most likely a result of the continual resupply of nutrients and iron from shelf-influenced waters, akin to the situations found in the Kerguelen and Crozet regions (Pollard et al., 2009). This study found that POC export at the site downstream

BGD

11, 16105–16134, 2014

The contribution of zooplankton faecal pellets

C. Manno et al.

Title Page

Abstract

Introduction

Conclusions

References

Tables

Figures



Back

Close

Full Screen / Esc

Printer-friendly Version

Interactive Discussion



The contribution of zooplankton faecal pellets

C. Manno et al.

Title Page

Abstract

Introduction

Conclusions

References

Tables

Figures



Back

Close

Full Screen / Esc

Printer-friendly Version

Interactive Discussion



of South Georgia (P3) was at least an order of magnitude greater than the flux at the less productive upstream site (P2). Conversely, the relatively low POC flux at P2, which is upstream of South Georgia and does not receive shelf-influenced nutrient-enhanced waters, reflects the low levels of productivity found there (Korb et al., 2008; Borrione and Schlitzer, 2013). The comparison of these 2 contrasting sites illustrates that enhanced productivity augments levels of carbon export to the deep ocean. By contrast, (Buessler, 1998) compared production in the surface layers to export to depth in a wide range of ocean settings and seasons and contended that much of the ocean is characterized by low POC export relative to primary production. Our present results agree with (Pollard et al., 2007) and (Blain et al., 2007) who proposed that POC flux in sites naturally fertilized by iron can be substantial compared to the larger part of the Southern Ocean where iron remains limited. These iron-fertilized sites, although relatively small in area, make a substantial contribution to biological carbon pump in the Southern Ocean (Blain et al., 2007).

A notable pattern in the present study was the double seasonal peak in POC and FP at P3 (Fig. 8), which is the first to be reported in the Southern Ocean. Recently, (Borrione and Schlitzer, 2013), on the basis of 12 years of sea-surface satellite data, resolved two recurrent annual blooms in the region downstream of South Georgia (a first peak in the spring followed by a second peak during late austral summer or early autumn). The authors attributed the second peak to a renewed supply of silicate, which reaches limiting concentrations in January and terminates the first bloom. It follows that the secondary peak is more likely to be dominated by less siliceous microplankton such as flagellates and forams. This agrees with our findings of greater levels of silicoflagellates in FPs during autumn (see below). Korb et al. (2012) found microplankton to succeed diatoms across transects the Scotia Sea carried out in spring and then summer.

4.2 Variability in the assemblage and contents of FPs

The two seasonal peaks in FP flux at P3 differed not only in their magnitude but also in the assemblage of FPs they contained. In the spring, intact diatoms were densely packed in the FPs while, in the late summer, FPs were less dense and characterized by more highly fractured diatoms, organic matrix and silico- and dinoflagellates. This suggests that FP producers shifted from a herbivorous to an omnivorous diet over the course of the season. By autumn–winter, the FPs became smaller and whiter in color. Urban-Rich et al. (1998) considered similar looking FPs to characterize a detritivorous diet combined with a greater consumption of flagellates.

The differences in FP content and flux intensity between the primary and secondary FP seasonal peaks at P3 reflect the likely composition of the phytoplankton community between these two periods. Korb et al. (2012) reported early summer blooms in this region to be dominated by heavily silicified diatoms, such as *Chaetoceros penatum*, while more weakly silicified diatoms such as *Thalassionema nitzschoides* predominated in the late summer, to be succeeded by heterotrophic dinoflagellates in the autumn. The consumption of these different food types will in turn influence the sinking speed of the resulting FPs. In early summer, the FPs are likely to sink faster since they contain heavy diatoms, while, later in the year, sinking speeds will be slower as the FPs will more likely contain less-silicified diatoms and heterotrophs.

At P2, by contrast, there is an absence of FPs containing well packed and intact diatoms with the majority containing a mix of degraded diatoms, organic matrix and detritus. Compared to P3, where there is a clear shift in FP type and content with season, the nature of FPs at P2 reflect a stable zooplankton community with a consistent diet throughout the year. The P2 site is characterized by short blooms of *T. nitzschoides* and *Pseudonitzschia lineola* followed by microbial food webs (Korb et al., 2008) that favor remineralisation processes such as coprophagy and coprohexy, similar to that reported by (Gonzales et al., 2004) in unproductive areas of the south-east Pacific. Evidence for coprophagy and coprohexy is reflected in the increasing of number of fragmented FPs

The contribution of zooplankton faecal pellets

C. Manno et al.

Title Page

Abstract

Introduction

Conclusions

References

Tables

Figures



Back

Close

Full Screen / Esc

Printer-friendly Version

Interactive Discussion



collected at P2. In agreement with this finding, abundances of *Oithona* and cyclopoid nauplii, which commonly recycle material, were greater in P2 than in P3 (Ward et al., 2012). Thus, characterizing the assemblages and contents of FPs at the P3 and P2 sites has proved to be an effective means of defining their respective resident zooplankton communities and dominant feeding modes (i.e. an ephemeral phytoplankton-grazing community in the former, a more stable, coprophagous community in the latter). This in turn has allowed certain inferences to be made with regards the potential for FP export at the two sites. Early season FPs at P3 contain tightly-packed, heavily-silicified diatoms with rapid sinking speeds and a high likelihood of export. By contrast, even when FPs are produced at P2, their lower densities increases their residence time in the upper layers, resulting in greater likelihood of interception and being broken up.

An interesting further feature at P3 was the recurrence of salp FPs each autumn and winter. Although salps may not be a dominant contributor to biomass in the Scotia Sea region (Ward et al., 2012), they may make a disproportionate contribution to FP flux due to their large, fast sinking pellets (Anderson, 1998). The fact that the FPs became a major contributor outside of the summer productive period indicates that they must be effective at processing and repackaging heterotrophs and suspended organic matter during the autumn and winter months. Furthermore, it is known that the main salp species, *S. thompsoni*, enters a solitary phase during the winter months where it descends to depths of around 1000 m (Loeb and Santora, 2012). Therefore, the FPs found at this time of year are most likely to have been generated deep in the water column from material suspended in the mesopelagic layers.

4.3 Role of vertical migration and bathypelagic zooplankton in FP export

A particular difference between P3 and P2 was in the comparative degradation state of the FPs. At P3, we found that FPs in both the primary and secondary peak fluxes were in a relatively intact state. This contrasts with the P2 site, where FPs were less intact, with peritrophic membranes broken and cylindrical FPs often fragmented. We highlighted (see previous paragraph) that due to their content, FPs at P3 can sink

BGD

11, 16105–16134, 2014

The contribution of zooplankton faecal pellets

C. Manno et al.

Title Page

Abstract

Introduction

Conclusions

References

Tables

Figures



Back

Close

Full Screen / Esc

Printer-friendly Version

Interactive Discussion



faster than at P2 (reducing the exposition time to degradation process). Nevertheless we believe that the sinking speed alone may not to explain the high number of well preserved FPs observed at P3 at 2000 m. We propose that a major factor causing this difference in FPs degradation state between the two sites was the extent of diel vertical migration (DVM) in the respective zooplankton communities. Zooplankton DVM can influence mesopelagic carbon flux substantially by increasing the depth at which FPs are released into the system (Buesseler and Boyd, 2009; Wallace et al., 2013). Mineralization processes, further up the water column, are bypassed and FPs can sink relatively intact to the deep ocean. Indeed, such an active movement of FPs to deeper ocean layers can occur even in the absence of synchronized DVM, as occurs during periods of midnight sun (Wallace et al., 2013). We propose that DVM and/or unsynchronised VM is a more prominent feature of the zooplankton community residing at the P3 site.

At the P2 site, ovoidal FPs dominated and contained large amounts of reworked material. These FPs were less dense than ovoidal FPs at the P3 site, and so were unlikely to have had a rapid transit to depth. A more likely scenario is that the organisms (most likely copepods) that generated the FPs resided well below the mixed layer, where they consumed detrital matter and repackaged it into FPs. Generation of FPs by detritivores fits with the further observation of this FP type being present at a relatively constant level year round at the P2 site. Release of the FPs in the deeper layers can explain why they were in a much more intact state compared to other FP types, probably generated closer to the surface. It is known that zooplankton residing within the deeper layers of the ocean consume FPs, break them apart, and repackage them several times over the course of their descent (Conte et al., 2001). The important role of deep-dwelling zooplankton in the recycling and reprocessing of FPs at the P2 site is in line with a number of others studies that have considered the role of the bathypelagic zooplankton community in the downward flux of material (PilskaIn and Honjo, 1987; Gonzalez et al., 2000; Wilson et al., 2013).

BGD

11, 16105–16134, 2014

The contribution of zooplankton faecal pellets

C. Manno et al.

Title Page

Abstract

Introduction

Conclusions

References

Tables

Figures



Back

Close

Full Screen / Esc

Printer-friendly Version

Interactive Discussion



4.4 FP contribution to the deep carbon transfer

The present study made direct measurements of FPC for each FP category. Many FP flux studies have considered this value to be constant over time, but our results indicated that its variability may be considerable between seasons, with FPC being up to 40 % lower in the autumn–winter season compared to spring-summer. This is in agreement with FP production experiments by (Urban-Rich et al., 1998) and (Atkinson et al., 2012) who found this ratio to vary with food availability. Our results highlight the importance of directly measuring of FPC content when estimating parameters such as %FPC and its relationship to POC flux over annual cycles.

We found maximum %FPC values at P3 to be 91 % and at P2, 42 %. Both of these values are in the upper range of those reported for other sites at similar depths (Table 2). Similar values of %FPC presented in this study were observed only in the highly productive upwelling regions off the west coasts of South America (Gonzales et al., 2004) and California (Wilson et al., 2013). Our results highlight that, in the Scotia Sea region, zooplankton and their FPs have an important role in determining the level of C export. This is in line with several studies that found extremely high levels of zooplankton biomass in the Scotia Sea compared to the rest of the Southern Ocean (Ward et al., 1995; Atkinson et al., 1996; Pakhomov et al., 1997).

We found there to be a significant negative relationship between %FPC and POC at the P3 site. In effect, this relationship demonstrates that FPs make a proportionally greater contribution to total carbon flux when POC levels are comparatively low. Conversely the positive relationship between FPn and POC flux we observed does not take account of FP size and content and may reflect the presence of a large contribution from smaller, early developmental zooplankton stages that are only minor contributors to FPC. Wilson al., (2013) also found a negative relationship between %FPC and POC and went on to suggest that this may be a common feature of deep-sea fluxes. The negative relationship between %FPC and POC flux at P3 could be a consequence of several processes. Firstly, primary production has exceeded zooplankton consumption

BGD

11, 16105–16134, 2014

The contribution of zooplankton faecal pellets

C. Manno et al.

Title Page

Abstract

Introduction

Conclusions

References

Tables

Figures



Back

Close

Full Screen / Esc

Printer-friendly Version

Interactive Discussion



The contribution of zooplankton faecal pellets

C. Manno et al.

[Title Page](#)

[Abstract](#)

[Introduction](#)

[Conclusions](#)

[References](#)

[Tables](#)

[Figures](#)



[Back](#)

[Close](#)

[Full Screen / Esc](#)

[Printer-friendly Version](#)

[Interactive Discussion](#)



during the bloom phase, leading to the mass sinking of the ungrazed fraction at the point of bloom collapse. Observations in our sediment trap samples of a considerable quantity of phytodetritus during this period support this finding. Secondly, in this period, we also observed increased levels of zooplankton molts and carcasses in the traps which contributed to POC flux and in turn increase the inverse relationship between %FPC and POC. Thirdly, production and consumption were not in phase at that time, meaning that there was a temporal decoupling between the bloom period and the establishment of a grazer community. Finally, the difference in relative sinking speeds of FPs and slow sinking phytodetritus ($< 150 \text{ m d}^{-1}$, Billet et al., 1983) and the relatively low resolution of the sediment traps (15 days-30 days) may contribute to obscure more complex temporal relationship between %FPC and POC.

There was no relationship between POC flux and either %FPC or FPN at P2. This highlights that, in areas of relative low productivity, FPs are reworked by the zooplankton community, through processes such as coprophagy and coprohexy. FPC flux is therefore altered through the partial loss and degradation of some FPs.

More broadly, our results highlight that the zooplankton community type and its feeding mode can have the controlling influence on the quantity and quality of carbon exported to the ocean interior. In the two contrasting sites, that typify wider-scale situations within the Southern Ocean, the magnitude of carbon export to the deep ocean altered according to the different zooplankton communities and their generation and reworking of FPs. Imbalances between organic carbon sources and sinks is a common issue within models of global carbon export (Lutz et al., 2007; Dunne et al., 2007; Schlitzer, 2004; Henson et al., 2011). This imbalance indicates either the existence of unaccounted sources of organic carbon or that metabolic activity in the deep ocean is being over-estimated (Burd et al., 2010). In this study, we demonstrate that plankton community structure (and zooplankton behaviour) can significantly influence the level of C flux and must be included with global C export models.

Acknowledgements. We thank D. Pond and the captains and crew of the RRS *James Clark Ross* for their support in the deployment and recovery of sediment traps. E. Murphy, J. Watkins,

R. Korb and M. Whitehouse helped in the initial strategic design of the moorings and their locations. P. Ward and S. Thorpe provided invaluable advice in the interpretation of our results. P. Geissler carried out the CHN analysis. A. Belcher provided the Fig. 1. This work was carried out as part of the Ecosystems programme at the British Antarctic Survey.

5 References

- Accornero, A., Manno, C., Esposito, F., and Gambi, C.: The vertical flux of particulate matter in the polynya of Terra Nova Bay: results from moored sediment traps (1995–1997). Part II: Biological components, *Antarct. Sci.*, 15, 175–188, 2003.
- Anderson, V. and Nival, P.: A pelagic ecosystem model stimulating production and sedimentation of biogenic particles: role of salps and copepods, *Mar. Ecol.-Prog. Ser.*, 44, 35–50, 1988.
- Atkinson, A.: Subantarctic copepods in an oceanic, low chlorophyll environment: ciliate predation, food selectivity and impact on prey populations, *Mar. Ecol.-Prog. Ser.*, 130, 85–96, 1996.
- 15 Atkinson, A., Whitehouse, M. J., Priddle, J., Cripps, G. C., Ward, P., and Brandon, M. A.: South Georgia, Antarctica: a productive, cold water, pelagic ecosystem, *Mar. Ecol.-Prog. Ser.*, 216, 279–308, 2001.
- Atkinson, A., Schmidt, K., Fielding, S., Kawaguchi, S., and Geissler, P.: Variable food absorption by Antarctic krill: relationships between diet, egestion rate and the composition and sinking rates of their fecal pellets, *Deep-Sea Res. Pt. II*, 59–60, 147–158, 2012.
- 20 Bathmann, U. and Liebezeit, G.: Chlorophyll in copepod faecal pellets: changes in pellet numbers and pigment content during a declining Baltic spring bloom, *Pubbl. Staz. Zool. Napoli (I: Mar. Ecol.)*, 7, 59–73, 1986.
- Baer Jones, K. N.: Characterising the biological uptake of CO₂ across the Subtropical Frontal Zone (Thesis, Doctor of Philosophy), University of Otago, available at: <http://hdl.handle.net/10523/2355>, 2012.
- 25 Blain, S., Quéguiner, B., Armand, L., Belviso, S., Bombled, B., Bopp, L., Bowie, A., Brunet, C., Brussaard, K., Carlotti, F., Christaki, U., Corbière, A., Durand, I., Ebersbach, F., Fuda, J. L., Garcia, N., Gerringa, L. J. A., Griffiths, F. B., Guigue, C., Guillerm, C., Jacquet, S., Jeandel, C., Laan, P., Lefèvre, D., Lomonaco, C., Malits, A., Mosseri, J., Obernosterer, I., Park, Y. H.,
- 30

The contribution of zooplankton faecal pellets

C. Manno et al.

Title Page

Abstract

Introduction

Conclusions

References

Tables

Figures



Back

Close

Full Screen / Esc

Printer-friendly Version

Interactive Discussion



The contribution of zooplankton faecal pellets

C. Manno et al.

[Title Page](#)

[Abstract](#)

[Introduction](#)

[Conclusions](#)

[References](#)

[Tables](#)

[Figures](#)



[Back](#)

[Close](#)

[Full Screen / Esc](#)

[Printer-friendly Version](#)

[Interactive Discussion](#)



- Picheral, M., Pondaven, P., Remenyi, T., Sandroni, V., Sarthou, G., Savoye, N., Scouarnec, L., Souhault, M., Thuillers, D., Timmermans, K. R., Trull, T., Uitz, J., Van-Beek, P., Veldhuis, M. J. W., Vincent, D., Viollier, E., Vong, L., and Wagener, T.: Effect of natural iron fertilization on carbon sequestration in the Southern Ocean, *Nature*, 446, 1070–1075, 2007.
- 5 Borrione, I. and Schlitzer, R.: Distribution and recurrence of phytoplankton blooms around South Georgia, *Southern Ocean, Biogeosciences*, 10, 217–231, doi:10.5194/bg-10-217-2013, 2013.
- Bruland, K. W. and Silver, M. W.: Sinking rates of faecal pellets from gelatinous zooplankton (salps, pteropods, doliolids), *Mar. Biol.*, 63, 295–300, 1981.
- 10 Buesseler, K. O.: The decoupling of production and particulate export in the surface ocean, *Global Biogeochem. Cy.*, 12, 297–310, doi:10.1029/97GB03366, 1998
- Buesseler, K. O., Pike, S., Maiti, K., Lamborg, C. H., Siegel, D. A., and Trull, T. W.: Thorium-234 as a tracer of spatial, temporal and vertical variability in particle flux in the North Pacific, *Deep-Sea Res. Pt. I*, 56, 1143–1167, doi:10.1016/j.dsr.2009.04.001, 2009.
- 15 Burd, A. B., Hansell, D. A., Steinberg, D. K., Anderson T. R., Arístegui, J., Baltar, F., Beupré, S. R., Buesseler, K. O., DeHairs, F., Jackson, G. A., Kadko, D. C., Koppelman, R., Lampitt, R. S., Nagata, T., Reinthaler, T., Robinson, C., Robison, B. H., Tamburini, C., and Tanaka, T.: Assessing the apparent imbalance between geochemical and biochemical indicators of meso- and bathypelagic biological activity: what the @\$#! is wrong with present calculations of carbon budgets?, *Deep-Sea Res. Pt. II*, 57, 1557–1571, 2010.
- Conte, M., Ralph, N., and Ross, E.: Seasonal and interannual variability in deep ocean particle fluxes at the Oceanic Flux Program (OFP)/Bermuda Atlantic Time Series (BATS) site in the western Sargasso Sea near Bermuda, *Deep-Sea Res. Pt. II*, 48, 1471–1505, doi:10.1016/S0967-0645(00)00150-8, 2001.
- 25 Dagg, M. J., Urban-Rich, J., and Peterson, J. O.: The potential contribution of faecal pellets from large copepods to the flux of biogenic silica and particulate organic carbon in the Antarctic Polar Front region near 1701W, *Deep-Sea Res. Pt. II*, 50, 675–691, 2003.
- Dunne, J. P., Sarmiento, J. L., and Gnanadesikanm, A.: A synthesis of global particle export from the surface ocean and cycling through the ocean interior and on the seafloor, *Global Biogeochem. Cy.*, 21, GB4006, doi:10.1029/2006GB002907, 2007.
- 30 Fischer, G., Futterer, D., Gersonde, R., Honjo, S., Ostermann, D., and Wefer, G.: Seasonal variability of particle flux in the Weddell Sea and its relation to ice cover, *Nature*, 335, 426–428, 1988.

The contribution of zooplankton faecal pellets

C. Manno et al.

[Title Page](#)

[Abstract](#)

[Introduction](#)

[Conclusions](#)

[References](#)

[Tables](#)

[Figures](#)



[Back](#)

[Close](#)

[Full Screen / Esc](#)

[Printer-friendly Version](#)

[Interactive Discussion](#)



- Fowler, S. W. and Kanuer, G. A.: Role of large particles in the transport of elements and organic compounds through the oceanic water column, *Prog. Oceanogr.*, 16, 147–194, doi:10.1016/0079-6611(86)90032-7, 1986.
- Fowler, S. W., Small, L. F., and LaRosa, J.: Seasonal particulate carbon flux in the coastal northwestern Mediterranean Sea, and the role of zooplankton faecal matter, *Oceanol. Acta*, 14, 77–86, 1991.
- Gonzalez, H. E.: The distribution and abundance of krill faecal material and oval pellets in the Scotia and Weddell seas (Antarctica) and their role in particle flux, *Polar Biol.*, 12, 81–91, 1992.
- Gonzalez, H. E., Ortiz, V. C., and Sobrazo, M.: The role of the faecal material in the particulate organic matter flux in the northern Humbolt Current, Chile (230 S), before and during the 1997–1998 El Nino, *J. Plankton Res.*, 22, 499–529, 2000.
- Gonzalez, H. E., Hebbeln, D., Iriarte, J. L., and Marchant, M.: Downward fluxes of faecal material and microplankton at 2300 m depth in the oceanic area off Coquimbo (30 degrees S), Chile, during 1993–1995, *Deep-Sea Res. Pt. II*, 51, 2457–2474, 2004.
- Henson, S. A., Sanders, R., Madsen, E., Morris, P. J., Le Moigne, F., and Quartly, G. D.: A reduced estimate of the strength of the ocean's biological carbon pump, *Geophys. Res. Lett.*, 38, L04606, doi:10.1029/2011GL046735, 2011.
- Kobari, T., Steinberg, D. K., Ueda, A., Tsuda, A., Silver, M. W., and Kitamura, M.: Impacts of ontogenetically migrating copepods on downward carbon flux in the western subarctic Pacific Ocean, *Deep-Sea Res. Pt. II*, 55, 1648–1660, 2008.
- Komar, P. D., Morse, A. P., Small, L. E., and Fowler, D.: An analysis of sinking rates of natural copepods and euphausiid faecal pellets, *Limnol. Oceanogr.*, 26, 172–180, 1981.
- Korb, R. E., Whitehouse, M. J., Atkinson, A., and Thorpe, S. E.: Magnitude and maintenance of the phytoplankton bloom at South Georgia: a naturally iron-replete environment, *Mar. Ecol.-Prog. Ser.*, 368, 75–91, doi:10.3354/meps07525, 2008.
- Korb, R. E., Whitehouse, M. J., Ward, P., Gordon, M., Venables, H. J., and Poulton, A. J.: Regional and seasonal differences in microplankton biomass, productivity, and structure across the Scotia Sea: implications for the export of biogenic carbon, *Deep-Sea Res. Pt. II*, 59/60, 67–77, 2012.
- Lampitt, R. S., Noji, T. T., and Von Bodungen, B.: What happens to zooplankton faecal pellets? Implications for material flux, *Mar. Biol.*, 104, 15–23, doi:10.1007/BF01313152, 1990.

The contribution of zooplankton faecal pellets

C. Manno et al.

Title Page

Abstract

Introduction

Conclusions

References

Tables

Figures



Back

Close

Full Screen / Esc

Printer-friendly Version

Interactive Discussion



- Loeb, V. J. and Santora, J.: Population dynamics of *Salpa thompsoni* near the antarctic Peninsula: growth rates and interannual variations in reproductive activity (1993–2009), *Prog Oceanogr.*, 96, 93–107, 2012.
- Lutz, M. J., Caldeira, K., Dunbar, R. B., and Behrenfeld, M. J.: Seasonal rhythms of net primary production and particulate organic carbon flux to depth describe the efficiency of biological pump in the global ocean, *J. Geophys. Res.*, 112, C10011, doi:10.1029/2006JC003706, 2007.
- Madin, L., Kremer, P. P., Wiebe, P. H., Purcell, J. E., Horgan, E. H., and Nemazie, D. A.: Periodic swarms of the salp *Salpa aspera* in the slope water off the NE United States: biovolume, vertical migration, grazing, and vertical flux, *Deep-Sea Res. Pt. I*, 53, 804–819, doi:10.1016/j.dsr.2005.12.018, 2006.
- Manno, C., Tirelli, V., Accornero, A., and Fonda Umani, S.: Importance of the contribution of *Limacina helicina* faecal pellets to the carbon pump in Terra Nova Bay (Antarctica), *J. Plankton Res.*, 34, 145–152, 2010.
- Martin, J. H., Coale, K. H., and Johnson, K. S.: Testing the iron hypothesis in ecosystems of the equatorial Pacific Ocean, *Nature*, 371, 123–129, 1994.
- Pakhomov, E. A., Verheye, H. M., Atkinson, A., Laubscher, R. K., and Taunton-Clark, J.: Structure and grazing impact of the mesozooplankton community during late summer 1994 near South Georgia, Antarctica, *Polar Biol.*, 18, 180–192, 1997.
- Pilskaln, C. H. and Honjo, S.: The fecal pellet fraction of biogeochemical particle fluxes to the deep sea, *Global Biogeochem. Cy.*, 1, 31–43, doi:10.1029/GB001i001p00031, 1987.
- Pollard, R. T., Salter, I., and Sanders, R. J.: Southern Ocean deep-water carbon export enhanced by natural iron fertilization, *Nature*, 457, 577–580, doi:10.1038/nature07716, 2009.
- Schlitzer, R.: Carbon export fluxes in the Southern Ocean: results from inverse modeling and comparison with satellite-based estimates, *Deep-Sea Res. Pt. II*, 49, 1623–1644, 2002.
- Schlitzer, R.: Export production in the equatorial and North Pacific derived from dissolved oxygen, nutrient and carbon data, *J. Oceanogr.*, 60, 53–62, doi:10.1023/B:JOCE.0000038318.38916.e6, 2004.
- Schmidt, K., Atkinson, A., Steigeneberger, S., Fielding, S., Lindsay, M. C. M., Pond, D. W., Tarling, G. A., Klevjer, T. A., Allen, C. S., Nicol, S., and Achterberg, E. P.: Seabed foraging by Antarctic krill: implications for stock assessment, benthic-pelagic coupling, and the vertical transfer of iron, *Limnol. Oceanogr.*, 56, 1411–1428, 2011.

The contribution of zooplankton faecal pellets

C. Manno et al.

Title Page

Abstract

Introduction

Conclusions

References

Tables

Figures



Back

Close

Full Screen / Esc

Printer-friendly Version

Interactive Discussion



Toggweiler, J. R., Gnanadesikan, A., Carson, S., Murnane, R., and Sarmiento, J. L.: Representation of the carbon cycle in box models and GCMs: 1. Solubility pump, *Global Biogeochem. Cy.*, 17, 1026, doi:10.1029/2001GB001401, 2003.

Turner, J. T.: Zooplankton fecal pellets, marine snow and sinking phyto-plankton blooms, *Mar. Ecol.-Prog. Ser.*, 27, 57–102, 2002.

Urban-Rich, J., Hansell, D. A., and Roman, M. R.: Analysis of copepod fecal pellet carbon using a high temperature combustion method, *Mar. Ecol.-Prog. Ser.*, 171, 199–208, doi:10.3354/meps171199, 1998.

Wallace, M. I., Cottier, F. R., Brierley, A. S., and Tarling, G. A.: Modelling the influence of copepod behaviour on faecal pellet export at high latitudes, *Pol. Biol.*, 3, 579–592, 2013.

Ward, P. and Shreeve, R. S.: Egg production in three species of Antarctic copepod during an austral summer, *Deep-Sea Res. Pt. I*, 42, 721–735, 1995.

Ward, P., Atkinson, A., Venables, H., Tarling, G., Whitehouse, M., Fielding, S., Collins, M., Korb, R., Black, A., Stowasser, G., Schmidt, K., Thorpe, S., and Enderlein, P.: Food web structure and bioregions in the Scotia Sea: a seasonal synthesis, *Deep-Sea Res. Pt. II*, 59–60, 253–266, 2012.

Wassmann, P.: Retention versus export food chains: processes controlling sinking loss from marine pelagic systems, *Hydrobiologia*, 363, 29–57, 1998.

Wefer, G., Fisher, G., and Futterer, D.: Seasonal particle flux in the Bransfield Strait, Antarctica, *Deep-Sea Res.*, 35, 891–898, 1998.

Wexels Riser, C., Wassmann, P., Olli, K., Pasternak, A., and Arashkevich, E.: Seasonal variation in production, retention and export of zooplankton faecal pellets in the marginal ice zone and central Barents Sea, *J. Mar. Res.*, 38, 175–188, 2002.

Wilson, S. E., Ruhl, H. A., and Smith, K. L.: Zooplankton faecal pellet flux in the abyssal north-east Pacific: a 15 year time-series study, *Limnol. Oceanogr.*, 58, 2013, 881–892, 2013.

Yoon, W. D., Kim, S. K., and Han, K. N.: Morphology and sinking velocities of fecal pellets of copepod, molluscan, euphausiid, and salp taxa in the northeastern tropical Atlantic, *Mar. Biol.*, 139, 923–928, doi:10.1007/s002270100630, 2001.

The contribution of zooplankton faecal pellets

C. Manno et al.

Title Page

Abstract

Introduction

Conclusions

References

Tables

Figures



Back

Close

Full Screen / Esc

Printer-friendly Version

Interactive Discussion



Table 1. Average FPC (\pm SD, mgCmm^{-3}) of each FP category in spring–early autumn and autumn–winter.

	Ovoid/Ellips.	Round	Cylind.	Tabular
Spring–early autumn	0.052 ± 0.005	0.035 ± 0.004	0.030 ± 0.006	0.045 ± 0.015
Autumn–winter	0.034 ± 0.006	0.027 ± 0.008	0.018 ± 0.006	0.028 ± 0.012

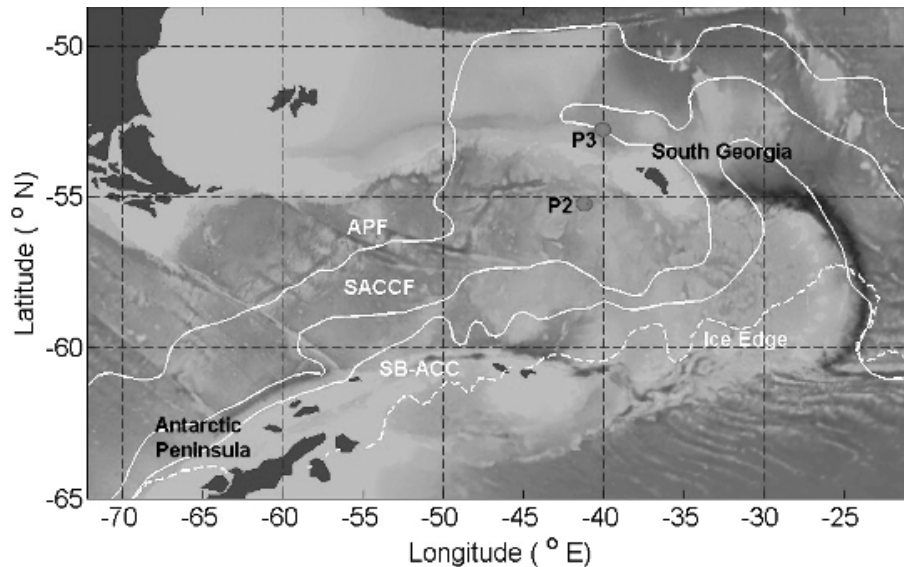


Figure 1. Map of study area in the Southern Ocean showing the locations of P2 and P3.

The contribution of zooplankton faecal pellets

C. Manno et al.

[Title Page](#)

[Abstract](#) | [Introduction](#)

[Conclusions](#) | [References](#)

[Tables](#) | [Figures](#)

[◀](#) | [▶](#)

[◀](#) | [▶](#)

[Back](#) | [Close](#)

[Full Screen / Esc](#)

[Printer-friendly Version](#)

[Interactive Discussion](#)



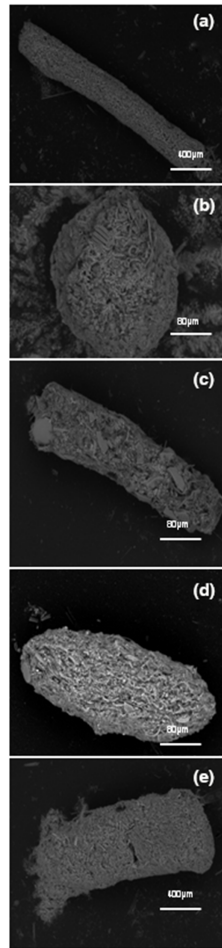


Figure 2. Scanning electron micrographs of the different FP types collected in the sediment traps **(a)** cylindrical, **(b)** round, **(c)** ellipsoidal, **(d)** ovoid, **(e)** tabular.

16128

BGD

11, 16105–16134, 2014

The contribution of zooplankton faecal pellets

C. Manno et al.

Title Page

Abstract

Introduction

Conclusions

References

Tables

Figures



Back

Close

Full Screen / Esc

Printer-friendly Version

Interactive Discussion



The contribution of zooplankton faecal pellets

C. Manno et al.

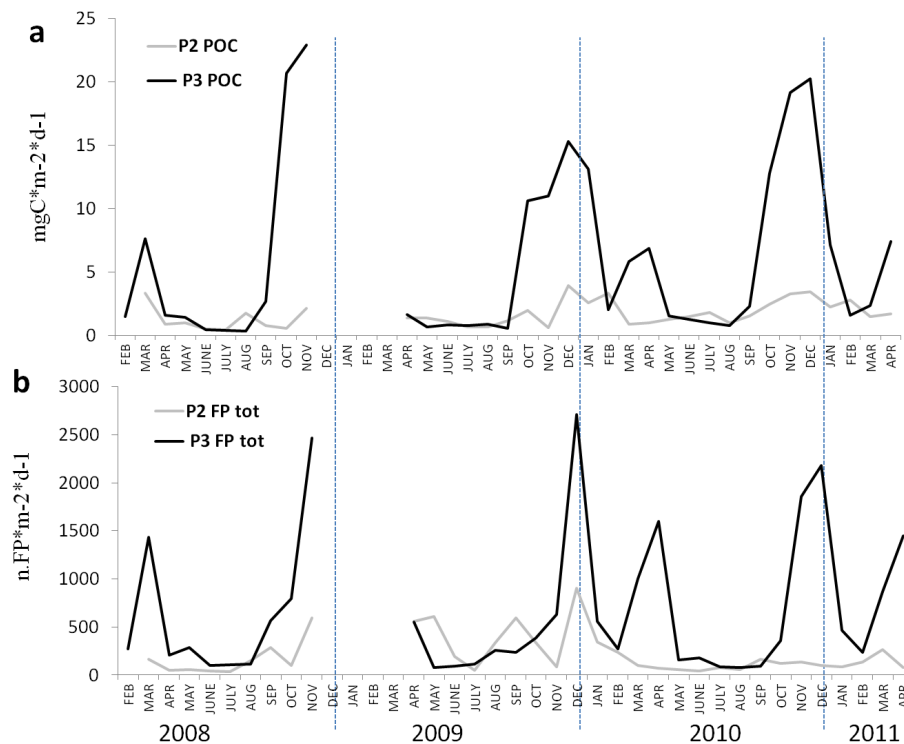


Figure 3. Interannual variability (2008–2011) of **(a)** POC ($\text{mgC m}^{-2} \text{d}^{-1}$) and **(b)** FP ($\text{n.FP} \times 10 \text{ m}^{-2} \text{d}^{-1}$) at P3 (black line) and P2 (grey line).

The contribution of zooplankton faecal pellets

C. Manno et al.

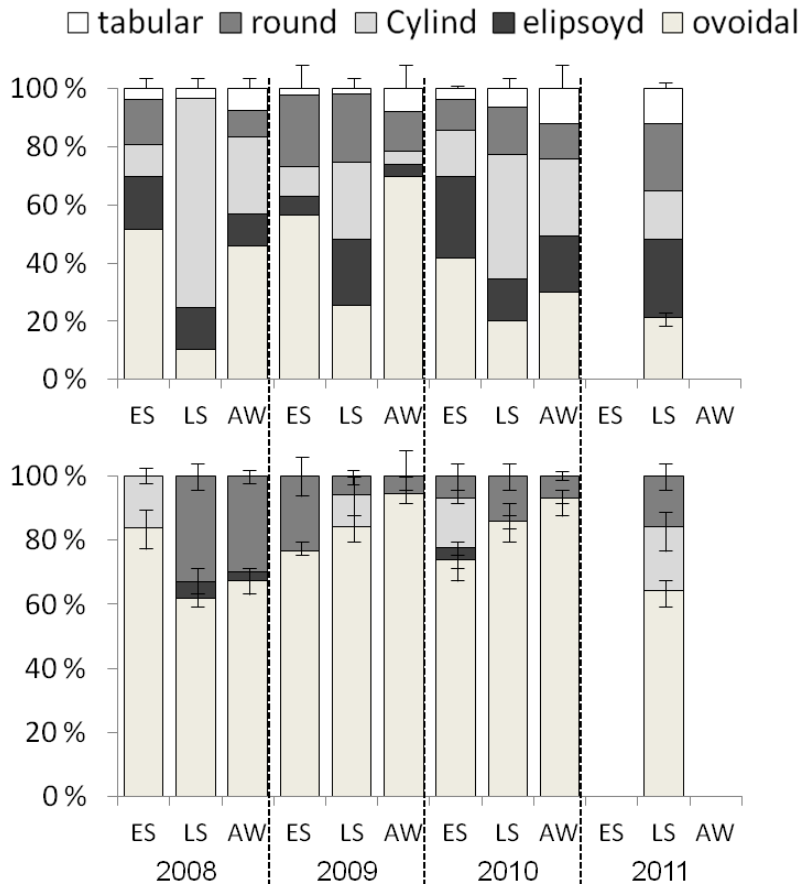


Figure 4. % contribution of different FP types to total FP community between 2008 and 2011 at P2 (*upper*) and P3 (*lower*). Data is grouped according to season: ES = Early Season, LS = Late Season, AW = Autumn–Winter. Error bars indicate the standard error of the mean.

[Title Page](#)
[Abstract](#)
[Introduction](#)
[Conclusions](#)
[References](#)
[Tables](#)
[Figures](#)

[Back](#)
[Close](#)
[Full Screen / Esc](#)
[Printer-friendly Version](#)
[Interactive Discussion](#)

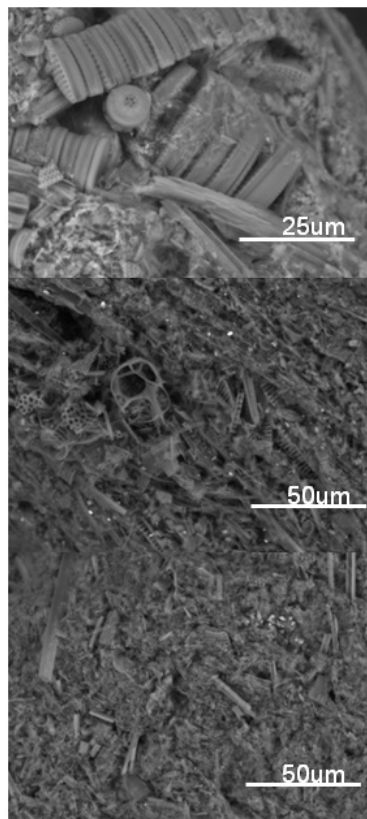
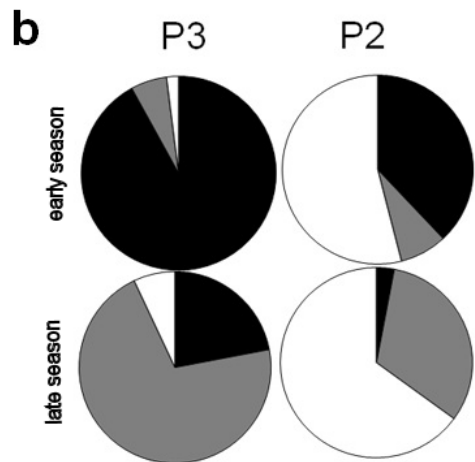
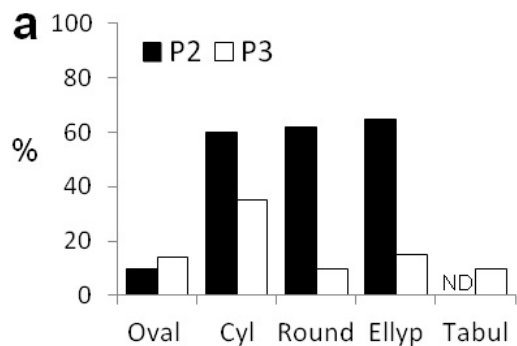



Figure 5. *Left (a)* % of FP with evidence of degradation (i.e fragmented and/or with the peritrophic membrane partially broken) at P3 and P2 *(b)* % of FP, within sediment trap samples from Early Season (upper) and Late Season (lower) at P3 and P2, presenting mainly a content of: intact diatoms – grey, fragmented diatoms – black and reworked material – white. *Right* Scanning electron micrographs showing the diversity of FPs within sediment trap material.

The contribution of zooplankton faecal pellets

C. Manno et al.

Title Page

Abstract

Introduction

Conclusions

References

Tables

Figures



Back

Close

Full Screen / Esc

Printer-friendly Version

Interactive Discussion

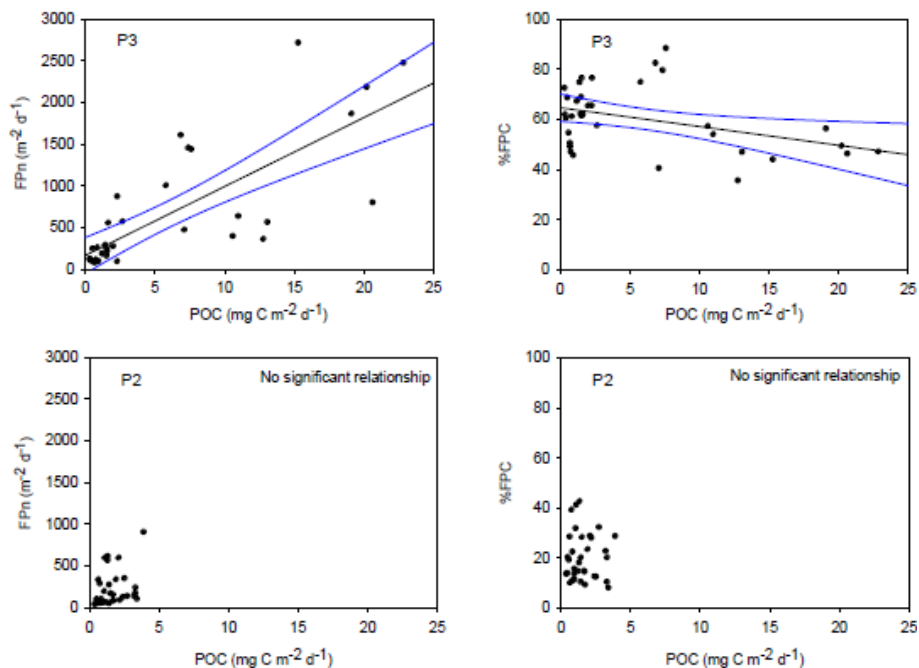


Figure 6. Relationship between POC (mg C m⁻² d⁻¹) and FPN (m⁻² d⁻¹, left) and %FPC (right) for P2 and P3. Solid lines show fitted regressions with 95 % confidence intervals.

The contribution of zooplankton faecal pellets

C. Manno et al.

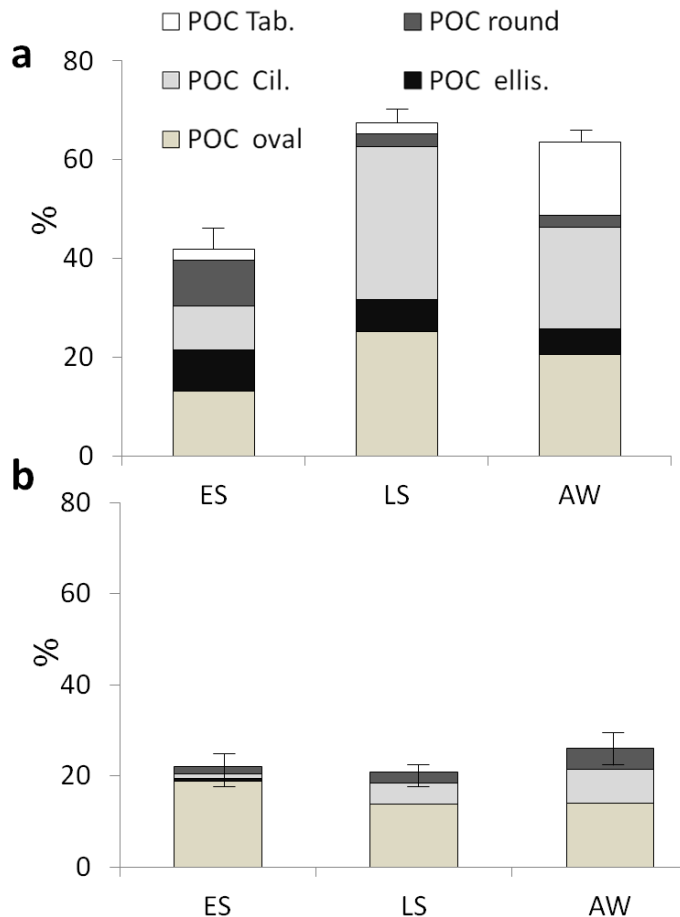


Figure 7. %FPC to total POC of each FP category during Early Season (ES), Late Season (LS) and Autumn–Winter (AW) at P2 (*upper*) and P3 (*lower*). Values were averaged over the period 2008–2011. Error bars indicate the standard error of the mean.

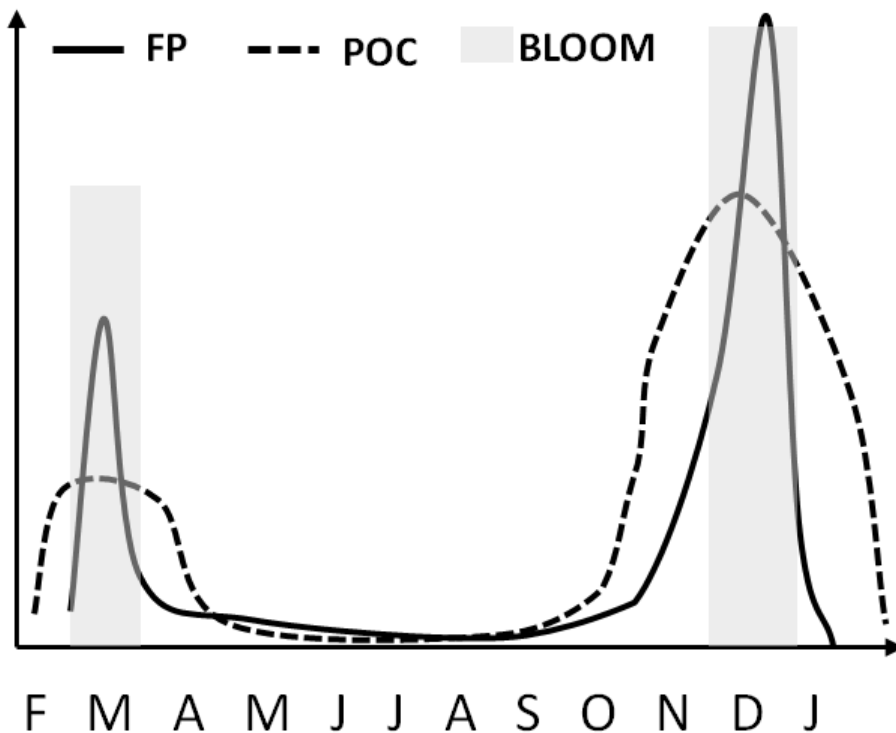


Figure 8. Schematic diagram of the relationship between POC, FP flux and the bloom periods at the P3 site.

The contribution of zooplankton faecal pellets

C. Manno et al.

Title Page

Abstract Introduction

Conclusions References

Tables Figures

◀ ▶

◀ ▶

Back Close

Full Screen / Esc

Printer-friendly Version

Interactive Discussion

